



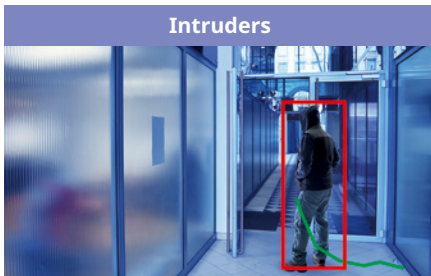
## Install Various types of applications to keep your i-PRO network camera on the cutting edge.

There are many types of AI applications that can be installed on network cameras at no additional cost. Although i-PRO network cameras are edge devices, they are in charge of various detection processes. As a result, the camera is responsible for the advanced processing and the server does not require expensive hardware.

### i-PRO AI applications

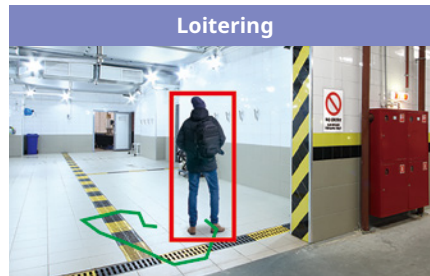
#### AI Video Motion Detection (AI-VMD)

- AI differentiates between vehicles, motorcycles, bicycles, people, and objects detected by AI on-site learning. It further detects and sends warning notifications when they enter a specified area. It can also count the number of times the target object crosses line.



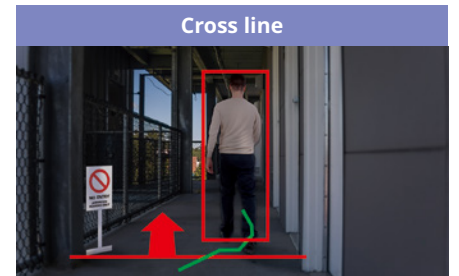
**Intruders**

- Issue an alarm when a moving object enters a specified area.



**Loitering**

- Issue an alarm when a moving object enters a specified area and stays there for a specified amount of time.



**Cross line**

- Issue an alarm when an object moving in the specified direction crosses a specified threshold. (Counting is also available)
- Tailgating alarm configurable by time-based multi-line detection.



**Direction**

- Issue an alarm when a moving object enters a specified area and moves in the specified direction.



**Speeding**

- Issue an alarm when a moving object exceeds a specified speed.

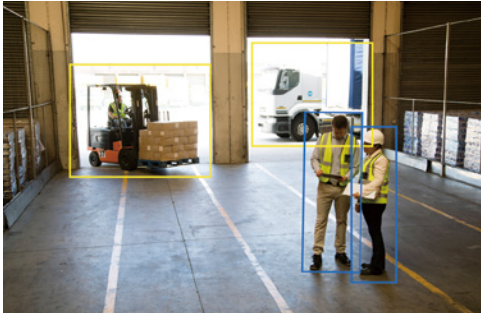


**People Counting**

- Count human, vehicles (four-wheel /two-wheel vehicles) etc. crossing a line, and provide statistics on the count data.
- Visual & statistical traffic analytics (Heat Map)

## AI On-site Learning

- AI On-site Learning allows to enhance AI analysis by adding target object and improving accuracy. You can add customized objects to detect using on-site camera footage through simple learning process. In addition, it contributes to reduce missed/false alarms by training based on the past footage.



<b>Supported camera</b>	WV-X15xxx, WV-X22xxx, WV-X25xxx (New X series Camera), WV-X4xxxx (New X series Fisheye Camera) Note: To be used with AI-VMD
<b>SD card</b>	Not required
<b>No. of learning images required</b>	10 - 200 images
<b>No. of target to be added</b>	Up to 5 targets Note: Additional targets can be detected simultaneously

\*For learning process, collecting images and manual operations to teach the correct target are required. Also, detection performance depends on the learning results and the environments you use. Be sure to check the operation at the installation site.  
\*For configuration (detection area etc.), please use the latest version of i-PRO configuration tool (ICT).

## AI Privacy Guard

- To protect privacy and portrait rights, it is possible to automatically apply a mosaic the entire face and figure of a person captured by the camera.



<b>Privacy Guard target</b>	Face, Human, Except face, Except human, All * "Except face, Except human, All" are available with the firmware released in February 2024 or later
<b>Stream</b>	Stream(1), Stream(2), Stream(3), Stream(4), Stream(2)&(4)
<b>Masking method</b>	Blurring, Filling

## AI Sound Classification

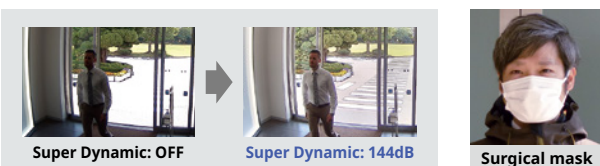
- AI detects and identifies (gunshot / yell / vehicle horn / glass break) sound. It then sends a warning notification according to the sound identified.



<b>Classification target</b>	1.Gunshot 2.Yell 3.Vehicle horn 4.Glass break
<b>Classification condition</b>	Target sound is 6 dB louder than crowd. Target sound continues more than a second. (except for gunshot)

## AI Face Detection

- The i-PRO network camera utilizing an AI engine and i-PRO Active Guard realize real-time face recognition without an expensive face recognition server. AI detection enables highly accurate face detection, and is also effective for detection in low lighting, backlit environments, or for detecting faces obscured by masks.

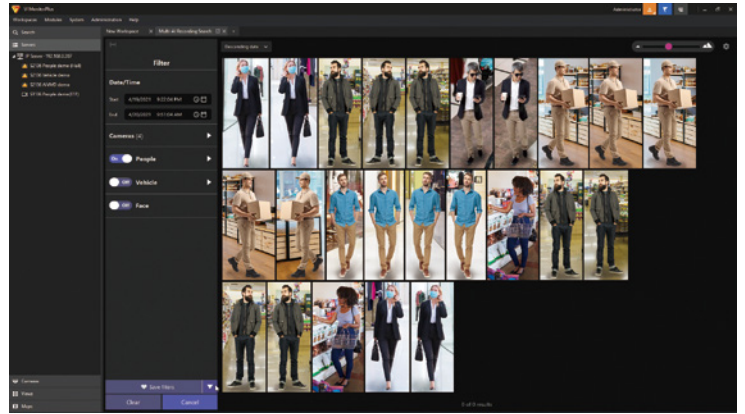


<b>Range of angle</b>	Horizontal: 0° - 45°, Vertical: 0° - 30°
<b>Detection number at the same time</b>	Max. 8 faces
<b>Size of face image</b>	Min. size: width 30 pixel Recommend: 60 pixel
<b>Min. illumination level</b>	100 lux
<b>Max. number of cameras</b>	20 when installed with VMS server PC 100 when installed in dedicated server PC
<b>Max. number of watchlist</b>	30,000 faces
<b>Recommended model</b>	WV-S1136, WV-S1536LTN, WV-S2536LTN

## AI People Detection

- Characteristics of the human face and clothing are extracted and classified into useful categories such as gender, age, and clothing color. This abundant attribute information can then be searched to easily find the target person.

Attributes	Values
<b>Gender</b>	Male / Female
<b>Age</b>	Child (0-10) / Young Adult (11-20) / Adult (21-60) / Senior (61+)
<b>Mask</b>	Mask / No Mask
<b>Hair type</b>	Long hair / Short hair
<b>Hair color</b>	Black / Brown / White / Gray / Gold
<b>Hat</b>	Hat / No Hat
<b>Sunglasses</b>	Sunglasses / No Sunglasses
<b>Beard</b>	Beard / No Beard
<b>Top type</b>	Long sleeves / Short sleeves
<b>Top color</b>	Black / Brown / White / Gray / Green / Red / Blue / Yellow / Orange / Purple / Pink
<b>Bottom type</b>	Long / Short
<b>Bottom color</b>	Black / Brown / White / Gray / Green / Red / Blue / Yellow / Orange / Purple / Pink
<b>Bag</b>	Bag / No Bag
<b>Bag color</b>	Black / Brown / White / Green / Red / Blue / Yellow / Orange / Purple / Pink
<b>Shoes color</b>	Black / Brown / White / Green / Red / Blue / Yellow



<b>Conditions</b>	<b>Range of angle</b>	Vertical: 0° to 45°
	<b>Detection number at the same time</b>	Max. 20 people
	<b>Size of people image</b>	Min. size: width 60 pixel Recommended size : width 100 pixel
	<b>Min. illumination level</b>	Min. illumination level : 10 lux Recommended illumination level : 50 lux
<b>Mask Area (non-detection area)</b>		Max. 8 areas (polygonal) can be set



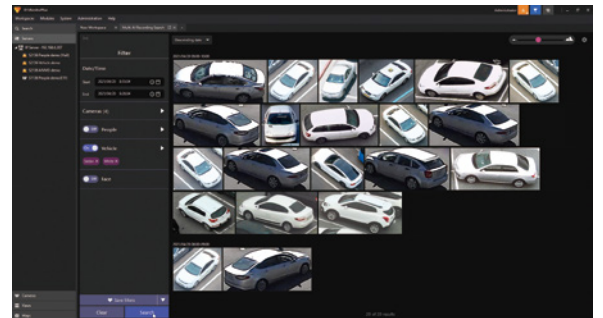
## AI Vehicle Detection

- Vehicle characteristics are extracted and classified into useful categories such as type and color. This abundant attribute information can then be searched to easily find the target vehicle.

### Vehicle Type



### Vehicle Color

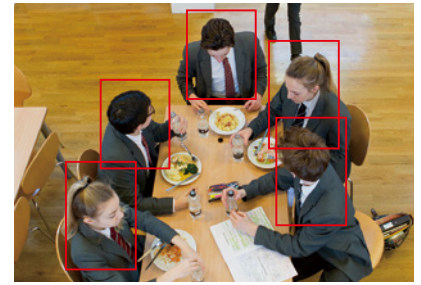


<b>Conditions</b>	<b>Range of angle</b>	Vertical: 0° to 90°
	<b>Detection number at the same time</b>	Max. 20 vehicles
	<b>Size of vehicle image</b>	Min. size: 70 pixel for the shorter axis (about 15-20 m ahead) Recommended size: 112 pixel for the shorter axis
	<b>Min. illumination level</b>	5 lux
<b>Mask Area (non-detection area)</b>		Max. 8 areas (polygonal) can be set

## AI Occupancy Detection

- It counts the number of objects in a specified area and issues an alarm when the number exceeds a specified threshold. Information of the number of objects in the area can be output externally via HTTP or MQTT.

<b>Size of people image</b>	Min. size: width 64 pixel (in case of S series 2MP model)
<b>Detectable angle of view</b>	Vertical: 0° to 45°
<b>Detection object</b>	People / Vehicles / Bicycles / Objects detected by AI on-site learning
<b>Max. number to detect at the same time</b>	People / Vehicles / Bicycles: Max. 40 objects Objects detected by AI on-site learning: Max. 20 objects
<b>Detection Area</b>	Max. 4 areas (polygonal)
<b>Number of objects to detect</b>	1 to 40 objects/area
<b>Detection time</b>	0.1 to 3,600 sec/area
<b>Recommended location to install</b>	People: Indoor Vehicles / Bicycles / Objects detected by AI on-site learning: Indoor/ Outdoor
<b>Min. illuminance</b>	50 lux



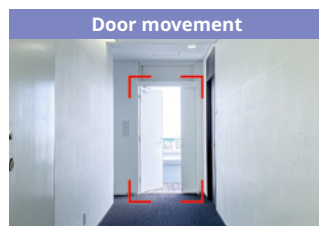
\*Example image of detection processing.

## AI Scene Change Detection

- It can define/learn the normal scene for each camera and output an alarm when it is determined to be abnormal.



If the normal status is an empty area, the application will notify you when a stationary object is left behind.



If the normal status is a closed door, the application will notify you when the door is left open for a defined period of time.



If the normal status for a spot is set to "occupied", the application will notify you when the spot is vacant.



If the normal status is set to "full shelf", the application will notify you when the shelf is empty or low, as defined.

<b>Scene Change judgment method</b>	The user trains the app with multiple images of normal scenes, and the app monitors the amount of pixel change from the trained images. It issues an alarm when the amount of pixel change exceeds a threshold for a specified time period.
<b>Recommended location to install</b>	Indoor
<b>SD Memory Card</b>	Required Not Required (WV-X15xxx, WV-X22xxx, WV-X25xxx(New X series Camera), WV-X4xxxx (New X series Fisheye Camera))
<b>Detection size</b>	5% or more of the width of the angle of view
<b>Detection Area</b>	Max. 16 areas (polygonal)
<b>Detection time</b>	2 to 3600 sec/area

## AI Free Text Detection

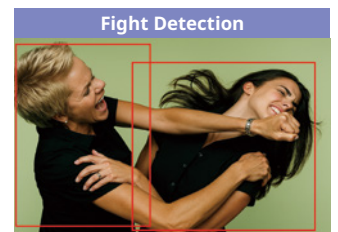
- It allows you to set detection conditions using free text, and can send an alarm notification when a target is detected. Also, it can generate feature data for free text search, allowing users to use Free Text Search in i-PRO Active Guard with no camera count limitation.



- Not wearing a helmet



- A truck with the DPT company logo



<b>Supported Camera</b>	WV-X4xxxx (New X series Fisheye Camera)
<b>Detection Type</b>	Free Text Detection, Fall Detection, Fight Detection*1
<b>Analysis Target</b>	Human, Vehicle, Bicycle, Other moving object, Specified area
<b>Detection Condition</b>	Max. 5 conditions (up to 5 types of detection conditions can be set)
<b>Number of simultaneous detections</b>	Up to 20 pcs/s
<b>Free Text Languages</b>	English only

\*1 Recommended image capture modes for Fall Detection and Fight Detection : including the following modes

- Fall Detection : Panorama, Double Panorama, Single PTZ

- Fight Detection : Panorama, Single PTZ

## AI Processing Relay

- It can be used when you want to add an AI function to an already installed camera. This software receives MJPEG data from other cameras, performs AI processing with AI Extension Software, and performs alarm reception and image search with i-PRO Active Guard.

	WV-S71300-F3 (i-PRO Mini) Note : Camera function on install camera is not available.	WV-X15xxx, WV-X22xxx, WV-X25xxx (New X series Camera), WV-X4xxxx (New X series Fisheye Camera) Note : Camera function is available.
<b>Input</b>	Up to 1 ch	Up to 3ch
<b>No. of apps to be installed *1</b>	Up to 2 apps	Up to 3 apps
<b>Supported camera</b>	i-PRO camera Other Company Camera *2	
<b>Received video format</b>	<b>Video format</b>	H.265, H.264, JPEG *3
	<b>Resolution</b>	Recommended resolution : 2MP(1920x1080) or 1MP(1280x720) Max. resolution : 1920x1080 Min. resolution : 640x360
<b>Available AI app *4</b>	AI-VMD / AI People Detection / AI Vehicle Detection / AI Occupancy Detection / AI Scene Change Detection / AI-VMD / AI People Counting for 360-degree fisheye camera	
<b>Supported System *5</b>	Video Insight / Genetec / Milestone / ASM300 / Luxriot with i-PRO Active Guard / Network Optix with i-PRO Advanced Object Search Plugin	

\*1 For more details, refer AI apps compatibility in Accessory Selector( <https://i-pro.com/selector/accessory/> ) or the Technical Information [C0103]( [https://i-pro.com/products\\_and\\_solutions/en/surveillance/learning-and-support/knowledge-base/technical-information](https://i-pro.com/products_and_solutions/en/surveillance/learning-and-support/knowledge-base/technical-information) )

\*2 The camera must be able to output "Received video format". And you need to know JPEG stream CGI or RTSP stream URL.

\*3 [H.265]

- Only 1 non-AI camera can be connected.
- The frame rate of the connected non-AI cameras must be 3-10 fps. (Recommended 5 fps)
- The frame rate of non-AI cameras must be within 10 fps and the bit rate must be within 1 Mbps.

[H.264]

- The frame rate of the connected non-AI cameras must be 3-15 fps. (Recommended 5 fps)
- The total frame rate of the connected non-AI cameras should be kept within 15 fps, and the total bitrate should be kept within 3 Mbps.

Example:

- When connecting 3 non-AI cameras with X-series camera: within 5 fps and 1 Mbps per channel
- When connecting 2 non-AI cameras with X-series camera: within 7.5 fps and 1.5 Mbps per channel
- When connecting 1 non-AI camera with X-series camera: within 15 fps and 3 Mbps per channel.

[JPEG]

- The frame rate of the connected non-AI cameras must be 3-15 fps. (Recommended 5 fps)

\*4 The AI analysis performance depends on the image quality, so it will be a best effort. Please check it with cameras you use on site.

\*5 "ASM300 with i-PRO Active Guard" supports only i-PRO cameras.

"Video Insight with i-PRO Active Guard", AI Occupancy Detection alarms are not supported because they do not go through i-PRO Active Guard.

## Supported functions with AI Processing Relay for each VMS

### Video Insight with i-PRO Active Guard

	AI-VMD	AI People Detection	AI Vehicle Detection	AI Occupancy Detection	AI Scene Change Detection
<b>Alarm Management</b>	✓	✓	✓	N / A	✓
<b>Similarity Search</b>	-	✓	✓	-	-
<b>Statistics Dashboard</b>	✓	✓	✓	✓	-

### Genetec / Milestone / Luxriot with i-PRO Active Guard

	AI-VMD	AI People Detection	AI Vehicle Detection	AI Occupancy Detection	AI Scene Change Detection
<b>Alarm Management</b>	✓*	✓	✓	✓*	✓*
<b>Similarity Search</b>	-	✓	✓	-	-
<b>Statistics Dashboard</b>	✓	✓	✓	✓	-

\*Luxriot supports only Past event search

### ASM300 with i-PRO Active Guard supports only cameras which can connect i-PRO NVR

	AI-VMD	AI People Detection	AI Vehicle Detection	AI Occupancy Detection	AI Scene Change Detection
<b>Alarm Management</b>	✓	✓	✓	✓	✓
<b>Similarity Search</b>	-	✓	✓	-	-
<b>Statistics Dashboard</b>	✓	✓	✓	✓	-

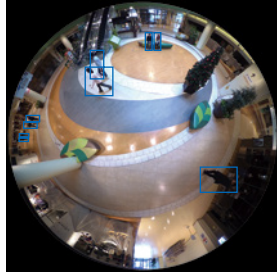
### Network Optix with i-PRO Advanced Object Search Plugin

	AI-VMD	AI People Detection	AI Vehicle Detection	AI Occupancy Detection	AI Scene Change Detection
<b>Alarm Management</b>	✓	✓	✓	-	-
<b>Similarity Search</b>	-	✓	✓	-	-
<b>Statistics Dashboard</b>	-	-	-	-	-

## AI-VMD/AI People Counting for 360-degree fisheye camera

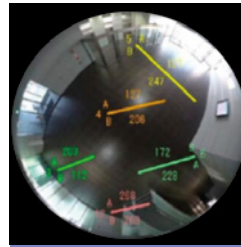
### AI Video Motion Detection

- AI differentiates between vehicles and people, detecting and sending warning notifications when an intruder enters a specified area.
- **Intruder detection:**  
Issues an alarm when a moving object enters a specified area.
- **Cross Line detection:**  
Issues an alarm when an object moving in the specified direction crosses a specified threshold.
- **Loitering detection:**  
Issues an alarm when a moving object enters a specified area and stays there for a specified amount of time.

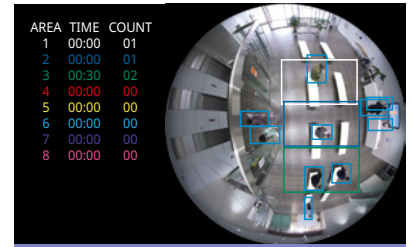


### People Counting

- **Cross Line Counting:**  
Counts the number of people moving in a specified direction and cross a specified threshold.
- **Area Counting (Queue Management):**  
Counts the number of people in the set area.  
Detection number at the same time is Max. 100 people.



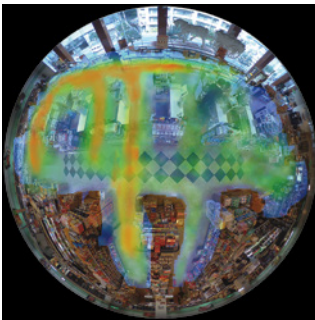
Cross Line Counting



Area Counting

### Heat map

- Heat mapping provides statistical information about traffic flow and keeps counts for people passing through and loitering in the area.



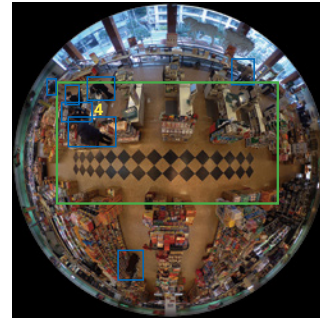
Passing



Loitering

### Occupancy detection

- The network camera uses its AI engine to detect congestion, providing data that can be used to direct visitor traffic flow in advance or help staff work more efficiently.



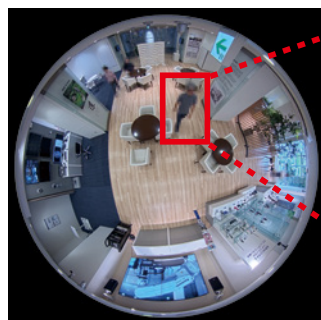
## AI Privacy Guard for 360-degree fisheye camera

### AI Privacy Guard

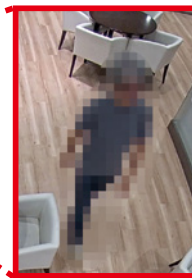
- AI can automatically mosaic faces and figures of people who are photographed to safeguard privacy and portrait rights.



Original image



Processed image

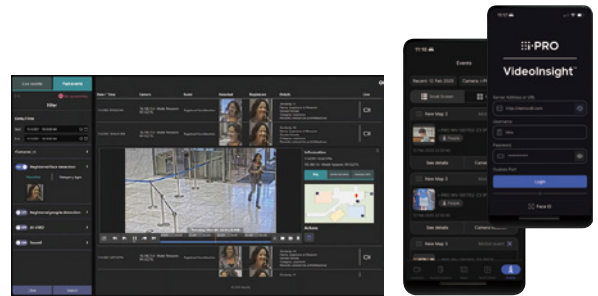


# UNLOCK THE POWER OF EDGE AI INSIDE YOUR VMS - AI-POWERED FORENSIC SEARCH, REAL-TIME ALERTS, AND OPERATIONAL INSIGHTS

i-PRO Active Guard is an AI-powered search, alerting, and visualization platform that transforms video metadata from edge AI cameras into actionable intelligence. It enables real-time alerts and rapid forensic search for people, vehicles, faces, and events, supporting proactive security and efficient investigations.

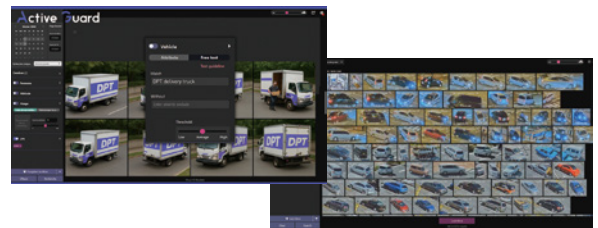
## Immediate response to or prevention of incidents

- Detect various events such as intruder, on-site learning object, scene change, occupancy, gunshot sound, and watchlist alarm for specific faces, people, vehicle and license plate group, Container code and OCR code. Rule-based action on VMS enables automation of system behavior when an event occurs.
- A mobile application\* frees you from work in a monitoring room. Also, by linking the PC software and mobile application, the necessary information can be transmitted from a person in the monitoring room to the security guards outside. \*Video Insight only.



## Significant reduction in post investigation time

- Searching by face, license plate, people and vehicle attributes, region of interest, and free text enables fast investigations in a matter of seconds instead of hours.
- Free Text Search allows you to search using natural language descriptions, such as appearance, clothing, or carried objects, even when predefined filters are not available.
- This advantage is maximized by many supported attributes with high precision based on i-PRO deep learning technology and by the high image quality of the i-PRO camera.



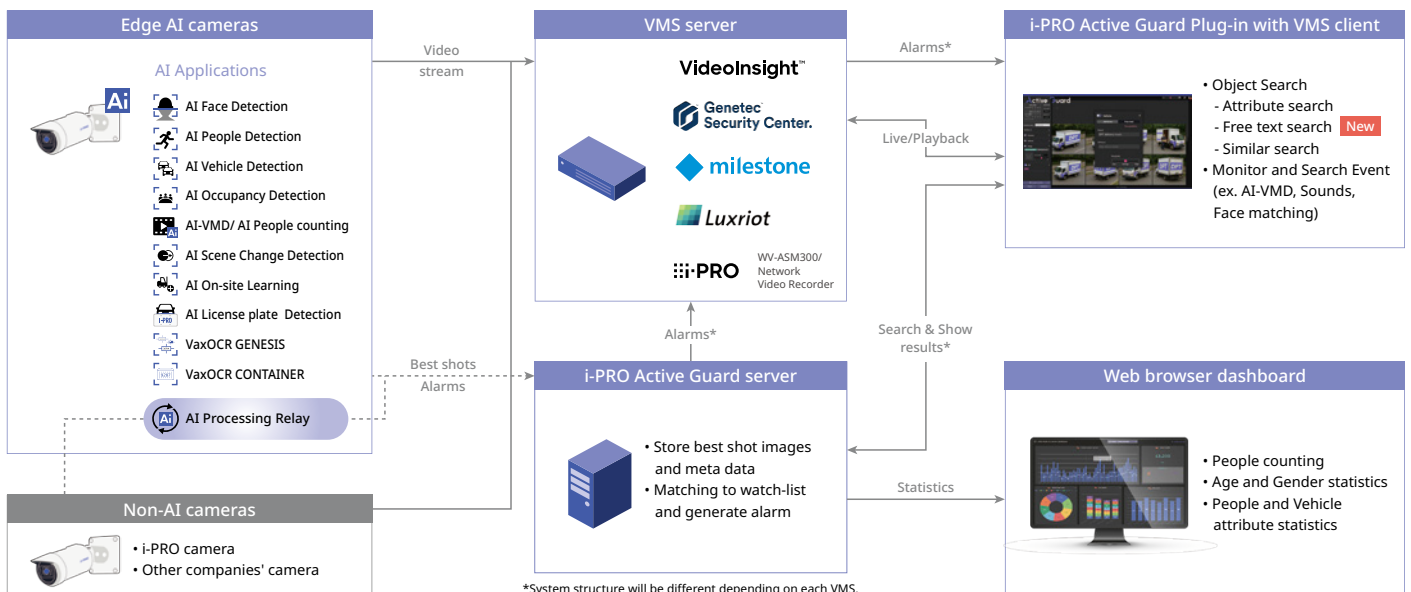
## Customizable dashboard display for business intelligence

- The dashboard on the web browser shows people counting, license plate counting, face and gender statistics, and people and vehicle attribute statistics. This can be used not only for security monitoring but also for operational analysis and business intelligence.
- Users can customize the content, size, location, data display period, etc. shown according to their needs.



## Flexible system architecture

- Fully integrated into devices from Genetec, Milestone, and Luxriot, as well as Video Insight.
- No need for expensive analysis server thanks to edge-based AI processing.
- By installing the required AI Edge Applications on each camera, AI performance can be utilized efficiently without unnecessary system load or infrastructure.



# Specification

		Video Insight system	Genetec system	Milestone system	Luxriot	WV-ASM300W	
Scale	Supported camera	i-PRO network camera with AI engine					
	Number of camera	1 to 100 CH when installed with VMS server (AI Face Detection is up to 20) 1 to 300CH when installed in dedicated server (AI Face Detection is up to 100)  *For Free text search, the i-PRO Active Guard server has an upper limit on the number of images it can process per second. Please calculate the appropriate number of cameras accordingly. For details, refer to "3.3. Bitrate and storage calculator" in the manual.	1 to 300CH when installed in dedicated server (AI Face Detection is up to 100)		1 to 4CH when installed with WV-ASM300W (AI Face Detection is up to 4) 1 to 300CH when installed in dedicated server (AI Face Detection is up to 100)		
	Number of client	No limitation (depending on limitation of VMS)					
	Number of Recording server	12 VI IP servers	- (only main server should be registered) - *Only main server should be registered, Federated architecture is not supported	- (Management server should be registered) - *Management server should be registered, Federated architecture is not supported	Luxriot Evo Server should be registered.		12 Network disk recorders
Number of i-PRO Active Guard server per a client	No limitation (depending on capability of whole system)					300	
Supported AI applications	For plugin	AI-VMD / AI Sound Classification / AI Face Detection / AI People Detection / AI Vehicle Detection / AI Scene Change Detection / AI On-site Learning / AI Processing Relay / Vaxtor ALPR, ALPR MMC, OCR Genesis, OCR Container					
	For dashboard	AI Face Detection, AI People Detection, AI Vehicle Detection, AI-VMD/AI People Counting for 360-degree fisheye camera, AI-VMD, AI Occupancy detection, AI On-site Learning, Vaxtor ALPR, Vaxtor ALPR MMC		AI Face Detection, AI People Detection, AI Vehicle Detection, AI-VMD/AI People Counting for 360-degree fisheye camera, AI-VMD, AI Occupancy detection / AI On-site Learning / Vaxtor ALPR, Vaxtor ALPR MMC			
Store	Retention period	Max. 31 days limitation for face, people or vehicle data / Max. 92 days limitation for people counting data * Max. 397 days (Image, Alarm) and 732 days (Counting data) by upgrading SQL Server Standard edition or higher					
Post Search	Filter	People, Vehicle (attribute, region of interest, date & time, camera, moving direction) Face (similar face, region of interest, date & time and camera) LPR (License plate number, country, vehicle type, color, brand, model, moving direction, date & time, camera) OCR (OCR code, date & time and camera) Container (container code, size code, owner country / city / company), date & time and camera					
	Similar search	People and vehicle (by same attribute information as detected ones), Face (search for similar faces or region of interest), LPR (license plate number) and OCR (OCR code and container code)  People (search for similar person image or region of interest) People and vehicle (Free text search with Generative AI)					The information is as indicated on the left. (Video Insight / Genetec / Milestone)
	Sort	Descending, Ascending, Relevance (Face, People, Vehicle, LPR, OCR and free text search), and Timeline view					
Alarm	Watch list alarm	Up to 30,000 faces, Up to 12 people attributes, Up to 12 vehicle attributes Up to 12 License plate groups or attributes, Up to 12 OCR groups					
	Detection alarm	AI Sound Classification (Gunshot / Yell / Vehicle horn / Glass break) AI-VMD (Intruder / Loitering / Direction / Line cross / On-site learning)/ LPR, OCR (OCR code, container code) VCA, Access Control / AI Scene change detection	AI Sound Classification (Gunshot / Yell / Vehicle horn / Glass break) AI-VMD (Intruder / Loitering / Direction / Line cross / On-site learning) AI Scene change detection AI Occupancy detection LPR OCR (OCR code, container code)				
	Related function	Show alarm on real-time, Alarm search, VMS's Rules configuration, Map overlay, Notification to mobile app, Manage alarm status				Alarm destination (plugin, camera, IO Unit or Custom HTTP) and alarm trigger can be configured.	
Playback/ Export	Playback	Playback video around the time of the best shot on full and multi-view	Playback video around the time of the best shot on full screen				
	Export video	Save best shot image, Export video from Recording server					
	Export Search result	HTML and CSV	HTML	HTML	HTML	HTML and CSV	
Dashboard	Supported browser	Microsoft Edge, Google Chrome and Firefox					
	Chart	People counting, occupancy statistics and heatmap when using AI-VMD/AI People Counting for 360-degree fisheye camera. People counting, vehicle counting, object counting (enabled by on-site learning) and heatmap when using AI-VMD on fixed camera. People counting and occupancy statistics when using AI Occupancy Detection. Chart can be plotted by the combination of each line or area of each camera for People, vehicle and on-site learning object counting. Data update interval is minimum 5 seconds for people/vehicle on-site learning object counting and 1 min for heat map. Age and gender statistics when using AI Face Detection. Data update interval is minimum 1 min. People attribute statistics when using AI People Detection. Data update interval is minimum 1 min. Vehicle attribute statistics when using AI Vehicle Detection. Data update interval is minimum 1 min. LPR counting when using LPR application. Data update interval is minimum 1 min.					
	Customize	Contents, display size, location for each chart. 10 Layouts per user can be saved and 24 user can be registered. (Up to 4 user can be log-in at the same time) Basic display color theme (dark or light) Line chart type (Straight line / Smoothed line), line/area name for counting					

## System requirement

		VMS	WV-ASM300
i-PRO Active Guard server installed in dedicated server  *Not support to install with Milestone XProtect	Up to 100 cameras  *Camera with AI Face Detection is up to 20.	<ul style="list-style-type: none"> <li>Intel® Core™ i7-9700 (4.9 GHz, 8 core 8 thread) or better</li> <li>32 GB of RAM or more</li> <li>64 bit operating system               <ul style="list-style-type: none"> <li>Microsoft® Windows 10 Pro</li> <li>Microsoft® Windows 10 Enterprise</li> <li>Microsoft® Windows 10 Education</li> <li>Microsoft® Windows 10 Pro Education</li> <li>Microsoft® Windows 10 IoT Enterprise</li> <li>*version 2004 or later</li> </ul> </li> <li>Microsoft® Windows 11 Pro</li> <li>Microsoft® Windows 11 Enterprise</li> <li>Microsoft® Windows 11 Education</li> <li>Microsoft® Windows 11 Pro Education</li> <li>Microsoft® Windows 11 IoT Enterprise</li> <li>Microsoft® Windows Server 2016 Standard</li> <li>Microsoft® Windows Server 2019 Standard</li> <li>Microsoft® Windows Server 2022 Standard</li> <li>Microsoft® Windows Server 2025 Standard</li> <li>Microsoft® Windows Server 2016 Datacenter</li> <li>Microsoft® Windows Server 2019 Datacenter</li> <li>Microsoft® Windows Server 2022 Datacenter</li> <li>Microsoft® Windows Server 2025 Datacenter</li> <li>GbE network interface card</li> </ul>	
	Up to 300 cameras  *Camera with AI Face Detection is up to 100.	<ul style="list-style-type: none"> <li>Intel® Xeon® Silver 4208 2.1 GHz (8 core 16 thread) or better</li> <li>32 GB of RAM or more</li> <li>64 bit operating system               <ul style="list-style-type: none"> <li>Microsoft® Windows Server 2016 Standard</li> <li>Microsoft® Windows Server 2019 Standard</li> <li>Microsoft® Windows Server 2022 Standard</li> <li>Microsoft® Windows Server 2025 Standard</li> </ul> </li> <li>Microsoft® Windows Server 2016 Datacenter</li> <li>Microsoft® Windows Server 2019 Datacenter</li> <li>Microsoft® Windows Server 2022 Datacenter</li> <li>Microsoft® Windows Server 2025 Datacenter</li> <li>GbE network interface card</li> </ul>	
i-PRO Active Guard server installed with VMS server	Up to 100 cameras *Camera with AI Face Detection is up to 20	<ul style="list-style-type: none"> <li>Intel® Xeon® Silver 4208 2.1 GHz (8 core 16 thread) or better</li> <li>32 GB of RAM or more</li> <li>64 bit operating system               <ul style="list-style-type: none"> <li>Microsoft® Windows Server 2016 Standard</li> <li>Microsoft® Windows Server 2019 Standard</li> <li>Microsoft® Windows Server 2022 Standard</li> <li>Microsoft® Windows Server 2025 Standard</li> </ul> </li> <li>Microsoft® Windows Server 2016 Datacenter</li> <li>Microsoft® Windows Server 2019 Datacenter</li> <li>Microsoft® Windows Server 2022 Datacenter</li> <li>Microsoft® Windows Server 2025 Datacenter</li> <li>GbE network interface card</li> </ul>	
i-PRO Active Guard server installed with ASM300	Up to 4 cameras *Camera with AI Face Detection is up to 4		<ul style="list-style-type: none"> <li>Intel® Core™ i7-10700 (4.8 GHz, 8 core 16 thread) or better</li> <li>16 GB of RAM or more</li> <li>64 bit operating system               <ul style="list-style-type: none"> <li>Microsoft® Windows 10 Pro version 20H2 or later,</li> <li>Microsoft® Windows 11 (64 bit)</li> </ul> </li> <li>GbE network interface card</li> <li>Graphic: NVIDIA Quadro P1000, NVIDIA T1000</li> </ul>

Note : i-PRO Active Guard server can be run on Microsoft® Hyper-V with Windows Server 2022 and VMware® ESXi 7.0 Update 3 and VMware® ESXi 8.0 Update 3e.  
 When using virtual platform, CPU, memory, network adapters, and storage may become bottlenecks.  
 Please consider in advance the allocation of sufficient CPU, memory, and network settings to meet the above hardware requirements.

### Trademarks and registered trademarks

– All other trademarks identified herein are the property of their respective owners.

### Important

- Safety Precautions : Carefully read the Basic Information, Installation Guide and Operating Instructions before using this product.
- i-PRO Co., Ltd. cannot be held responsible for the performance of the network and/or other manufacturers' products used on the network.
- When monitoring remotely, please pay attention to the network design.  
 For details, please contact your local i-PRO sales representatives.

• All images are for illustrative purposes only. • Specifications are subject to change without notice.



i-PRO Co., Ltd.

[https://i-pro.com/products\\_and\\_solutions/surveillance](https://i-pro.com/products_and_solutions/surveillance)

(2A-286PA)