



Web Guide

Extension software (AI Video Motion Detection)

Contents

1	Introduction	1
	1.1 Product Overview	1
	1.2 Features	2
	1.2.1 Cross Line Counting function	2
	1.2.2 AI-VMD	2
	1.3 Before using this product	3
2	Preparation	6
	2.1 Check compatible models and software versions	6
	2.2 Install the product	6
3	Basic settings	8
	3.1 Open the setting menu	8
	3.2 Select the operation	10
	3.3 AI motion detection setting	11
	3.3.1 Alarm notification area	11
	3.3.2 Drawing area (for setting the detection areas)	12
	3.3.3 Detection condition setting	14
	3.3.4 Area setting procedure	16
	3.4 Set the count function	16
	3.4.1 Line setting	18
	3.4.2 HTTP transmission	19
	3.4.3 MQTT transmission	20
	3.4.4 Heat map setting	21
	3.4.5 Others	23
	3.5 Detailed setting (if necessary)	24
	3.5.1 Image quality setting	25
	3.5.2 AI-VMD alarm notification operation setting	25
	3.5.3 Threshold setting	25
	3.5.4 Time setting	26

3.5.5	Speed setting	27
3.5.6	Depth	32
3.5.7	Position selection (for PTZ cameras only)	34
3.5.8	Movement amount judgment	35
3.5.9	Advanced setting	36
3.6	Schedule setting	44
3.7	Alarm setting	44
4	Demo screen	47
4.1	AI motion detection	47
4.2	Count function	50
5	Linking with AI On-site Learning applications	52
5.1	Add a new Detection object	52
5.2	Improve misdetection and omission of human, cars and motorcycles	54
5.3	Demo screen	55
6	Operation	56
7	Others	58
7.1	Specifications	58
7.1.1	PC environment required	58
7.1.2	Compatible cameras	58
7.2	For trademarks and registered trademarks	58
7.3	External interface specifications	58
7.4	Open Source Software	59
7.5	Copyright	78
7.6	Disclaimer	78

1 Introduction

This manual explains how to register extension software AI video motion detection application WV-XAE200WUX (hereinafter referred to as this product) with AI network cameras (sold separately, hereinafter referred to as camera), the settings required prior to starting operation, and how to operate AI network cameras. The camera must be registered before use. Be sure to read the camera's instruction manual when using the camera. The settings shown in this manual may differ depending on the camera model used and the i-PRO Setting Tool version (hereinafter referred to as iCT).

1.1 Product Overview

This product is software for more convenient use of the camera. You can use the following functions by installing the product on the camera.

- Count with the [Cross Line Counting function] that counts the number of human, cars (four-wheel vehicles), motorcycles and bicycles (two-wheel vehicles) that cross a line.
- Activate an alarm with the "AI-VMD function (hereinafter, AI-VMD)" that automatically identifies the detected moving bodies.



- This product is required for each camera.
- Refer to the following URL for information on the compatible models and software versions of this product.
→ [Equipment compatibility](#) <C0103>
- ※ <Control number: Cxxxx> The number used when searching for the appropriate information on our support website.

1.2 Features

1.2.1 Cross Line Counting function

It counts human, vehicles (four-wheel vehicles), motorcycles and bicycles (two-wheel vehicles) crossing a line, and can provide statistics on the count data.

1.2.2 AI-VMD

- With AI technology, AI-VMD determines whether the detected moving body is a vehicle (four-wheel), a motorcycle or a bicycle (two-wheel), or a human.
- AI-VMD can detect moving bodies in the four modes below and then alarms occur.
 - INTRUDER: Detects if moving bodies intrude into the predetermined area
 - LOITERING: Detects if moving bodies loiter in the predetermined area beyond the fixed time.
 - DIRECTION: Detects if moving bodies move in the direction you specified within the predetermined area.
 - CROSS LINE: Detects if moving bodies cross the predetermined line in the direction you specified.

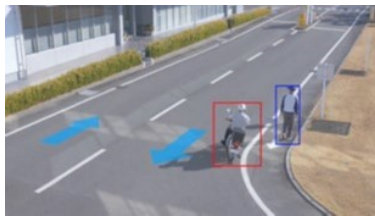
Below are examples of each detection. The example of DIRECTION is a case where bicycles are set as the detection objects.



INTRUDER: An alarm occurs when moving bodies are detected intruding into the predetermined area

1 Introduction

1.3 Before using this product



DIRECTION: An alarm is generated when the movement of a moving object in the specified direction is detected in the specified area.



LOITERING: An alarm occurs when moving bodies are detected intruding into the predetermined area.



CROSS LINE: Alarm is generated by detecting that the set line has exceeded the specified line.

1.3 Before using this product

The following cases may cause difficulty in detecting a subject or motion, or cause lost or false alarms or reduce measurement accuracy.

- There is no difference in brightness between the background and moving subject.
- Image brightness is low, such as at night.
- The subject moves too fast or too slowly.
- The subject is too small or too large.
- Light conditions, such as outdoors and windows, are easily changed.
- External light such as sunlight and car headlights enters.
- Fluorescent light flickers.
- The dome of the camera is stained with water droplets.
- The subject moves straight toward the camera.
- Too many moving objects.
- The camera is swinging.
- The weather is extremely bad.

- Multiple people intersect.
- Shadows fall into the Detection area.
- The subject is out of focus.
- The subject is blurred.
- The subject is moving toward or away from the camera at the periphery of the image.
- Only a part of the subject is hidden in the privacy zone or other subject. (Reference: Less than two-thirds of vehicles are visible.)
- Too many subjects. (Guideline: Accuracy may deteriorate if the number exceeds 40 (units).)
- Multiple subjects intersect.
- Strong external light is inserted to create a subject and other shadows.
- Illumination fluctuates when the lamp is turned on or off.
- Vehicle signs and posters are displayed.
- Vehicles come into the glass.
- If the vehicle is equipped with XX, such as a tow truck. (e.g. vehicle towing, boat etc.)
- The human lies or falls.
- The human is short. (Reference: 120cm or less)
- The human has a big baggage. (e.g., pushing carts, baby strollers, wheelchairs)
- The human is not walking independently. (e.g. an infant)
- Light conditions, such as near windows, are subject to change.
- Animals and insects are seen.
- A human's poster and mannequin are shown.

Other cautions are explained below.

- If the camera [Data Encryption] is on, the camera image may not be displayed on the camera image screen or demonstration screen.
- If there are false detection factors in the screen, such as trees shaking, roadway (passing by automobile), or water surface (reflected light), you can reduce false detection by setting the mask area.

Refer to the following page for the mask area settings.

→[3.3 AI motion detection setting](#)

- When setting the AI-VMD, check the operation during daytime and nighttime after setting the area according to the installation status of the cameras and the expected movement of the subject.

Refer to the following pages for area settings.

→[3.3 AI motion detection setting](#)

- If the camera's image angle changes after turning on the power, after changing the camera

settings, the camera may detect incorrectly for approximately 1 minute.

- The alarm is repeatedly activated every specified time while the target is on the screen. Thus, e-mails and proprietary alarms are also notified at intervals (see [Alarm deactivation time] on the [Alarm] tabs in the Camera Settings window).
- The message ID (Decimal number) of TCP alarm notification is "50" for Intruder alarm, "51" for Loitering alarm, "52" for Direction alarm, "56" for Croee line alarm, "61" for Intruder alarm stop, "62" for Loitering alarm stop.
- Based on the camera which is used, the transmission frame rate is limited when using AI-VMD. Refer to the following URL for details.
→[Equipment compatibility<C0103>](#)
- i-PRO Co., Ltd. shall not be responsible for any inconveniences, losses, or damages caused by the settings of AI-VMD or as a result thereof.
- AI-VMD is not for preventing theft, disaster, etc. i-PRO Co., Ltd. shall not bear any liabilities whatsoever for any accidents or losses.

2 Preparation

The flow to operation is as follows. This chapter describes ①, ②, ③, and ④.

- ① Check compatible models and software versions
→[2.1 Check compatible models and software versions](#)
- ② Install the product
→[2.2 Install the product](#)
- ③ Configure the required settings.
→[3 Basic settings](#)
- ④ Start of operation
→[6 Operation](#)



When using a camera with this product pre-installed, refer to the following pages.

→[AI Video Motion Detection](#)

2.1 Check compatible models and software versions

Check the compatible model and software version in the following URL.

→[Equipment compatibility<C0103>](#)

2.2 Install the product

Download the product and install it on your camera according to the following procedures.

1. Access the download site of the product, download the [AI Video Motion Detection], and save it to a PC.



Refer to the following for the download site of this product.

→[Click here for downloads](#)

2 Preparation

2.2 Install the product



Do not use spaces or double-byte characters in the name of the destination directory.

The screenshot displays the camera's web interface. On the left, the 'Setup' menu is visible, with '-Ext. software' highlighted. The main area shows the 'Software mng.' tab. Under 'Unique information', there are fields for MPR ID, Remaining ROM (102400 kbytes), Remaining RAM (102400 kbytes), SDK version (2.10), and Firmware version. Below this is a 'Set' button and a warning message about RAM capacity expansion mode. A file selection field is highlighted with a red box and a yellow circle '3', showing 'ファイルの選択' and 'ファイルが選択されていません'. Below it, the 'Install new Ext. software' radio button is selected, and the 'Execute' button is highlighted with a red box and a yellow circle '4'.

2. Go to the [Setup] menu > [Ext. software] page > [Software mng.] tab.



Check the [Remaining ROM] [Remaining RAM]. If you are running out of space, uninstall another installed extension software. For the uninstallation procedure, refer to the operation manual and settings of the camera.

3. Click [Browse...] to specify the [AI Video Motion Detection] that was downloaded.
4. Make sure that [Install new Ext. software] is selected and press [Execute].
 - Installation of the software starts. Upon completion of the installation, [AI-VMD] will be added to the extended software list and the [Software mng.] screen.



- Do not turn off the camera during installation.
- Do not perform any operation during installation until the installation is completed.

3 Basic settings

The procedure for configuring Basic settings is as follows.

- ① Open the setting menu
→[3.1 Open the setting menu](#)
- ② Select the operation
→[3.2 Select the operation](#)
- ③ Set the AI-VMD
→[3.3 AI motion detection setting](#)
- ④ Set the count function
→[3.4 Set the count function](#)
- ⑤ If you want to set the AI-VMD detection sensitivity, detection duration, and size of the human you want to detect:
Make detailed settings
→[3.5 Detailed setting \(if necessary\)](#)
- ⑥ Set a schedule
→[3.6 Schedule setting](#)
- ⑦ Set an alarm
→[3.7 Alarm setting](#)



For settings on cameras that support Internet Explorer, the display plug-in software [Network Camera View 4S (ActiveX)] must be installed on the PC in advance.

For details, refer to the Operation and Settings section of the camera's operation manual.

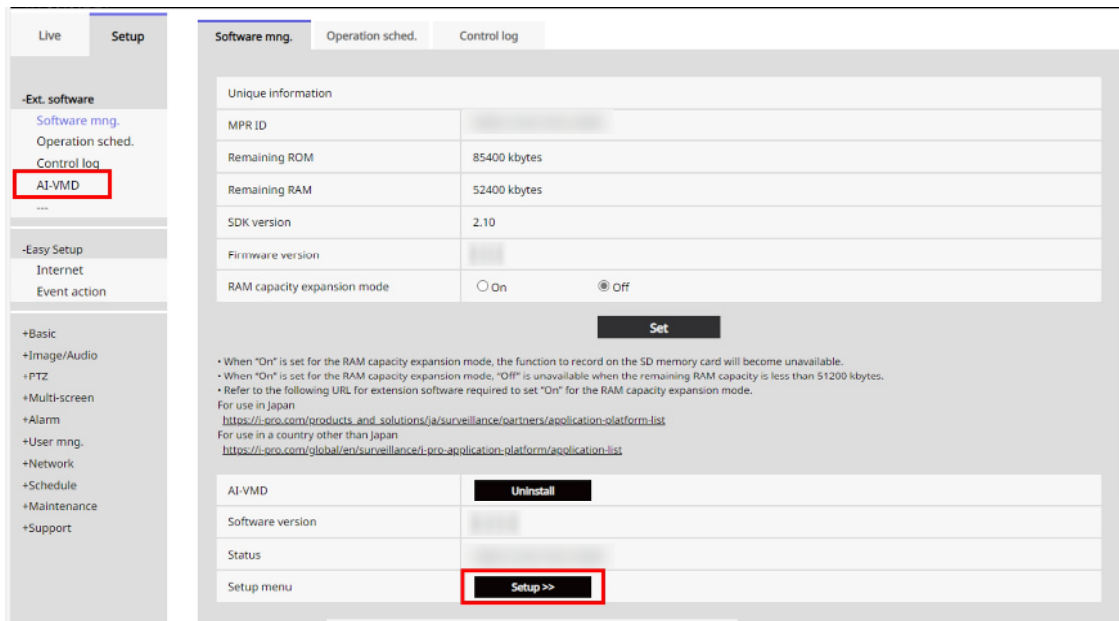
3.1 Open the setting menu

When the AI motion detection application is installed, the AI-VMD menu is added to the Cameras [Setup] menu > [Ext. software] page > [Software mng.] tab.

Clicking the [AI-VMD] tab or the [Setup >>] button moves the tab to the [AI-VMD Settings] tab.

3 Basic settings

3.1 Open the setting menu



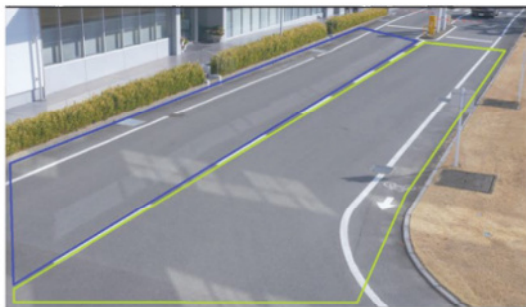
The [AI-VMD Settings] window has six setup windows: Select [① Operation selection], [② AI motion detection Setting], [③ [Count function Setting], [④ Detailed setting], [⑤ Schedule setting], and [⑥ Alarm setting].



If you do not select [① Operation selection], the settings after [② AI motion detection Setting] cannot be made.

3.2 Select the operation

AI-VMD setup menu | [1. Operation selection](#) > [2.AI motion detection setting](#) > [3. Count function setting](#) > [4.Detailed setting](#) > [5.Schedule setting](#) > [6.Alarm setting](#)



Status	Enable
Mode selection	<input checked="" type="radio"/> Normal angle mode <input type="radio"/> Perpendicular angle mode

* Available functions in each mode are as follows.
Normal angle mode: AI motion detection, count function (Detection object: Human, vehicles, two-wheel vehicles)
Perpendicular angle mode: AI motion detection, count function (Detection object: Human)

* The recommended angle of depression for each mode is shown below.
Normal angle mode: 0° to 45°
Perpendicular angle mode: 60° to 90°
If you want to count people accurately, it is recommended to use perpendicular angle mode.

* When using other extension software than this product together in the perpendicular angle mode, carefully read the terms and conditions of use of the extension software to use together.

* Use the latest camera firmware, when selecting perpendicular angle mode.

Set

Stop AI-VMD

Status

The status of the AI motion detection application is displayed.

When it is running, the status is displayed as [Enable], when it is stopped, the status is displayed as [Disable].

Operation is started by setting [Mode Selection], and can be stopped by clicking [Stop AI-VMD] button.

Mode selection

Select the image angle mode of the camera to be used.

There are two modes, Normal angle mode and Perpendicular angle mode, and the following functions are available for each mode.

- Normal angle mode: AI motion detection, count function (Detection object: Human, vehicles, two-wheel vehicles)
- Perpendicular angle mode: AI motion detection, count function (Detection object: Human)

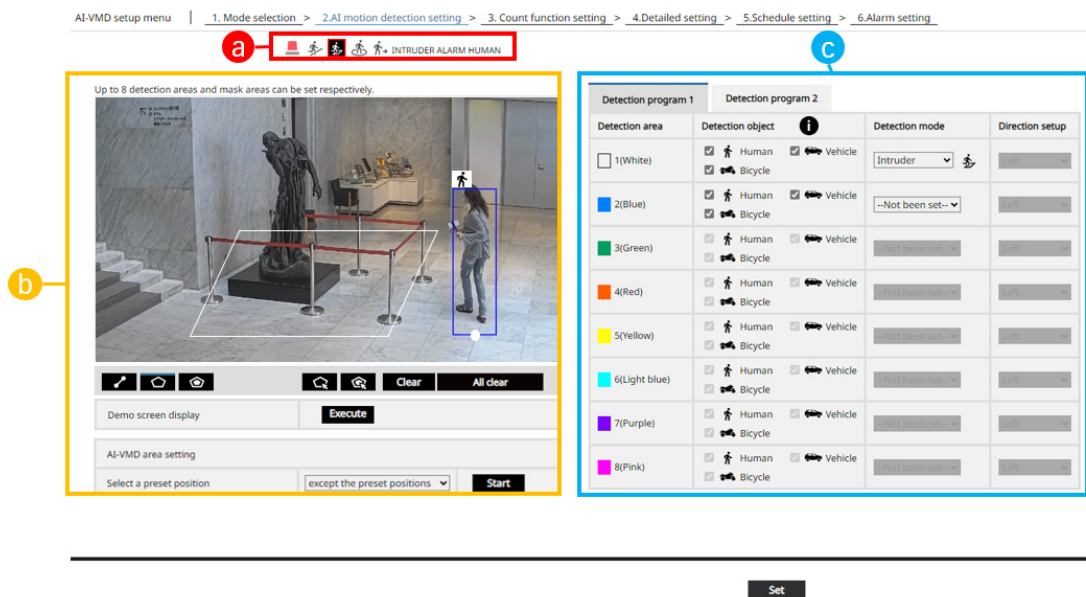


- If you want to count people more accurately, we recommend Perpendicular angle mode. However, the camera must be positioned directly downward.
- When using the Perpendicular angle mode at the same time as a extension software other than this product, pay attention to the condition of use of the extension software that is used at the same time.

3.3 AI motion detection setting

Set the area for detecting moving object by AI-VMD and the detection condition.

Select the Detection object of the Detection area from the human, car, and motorcycle. Select INTRUDER, LOITERING, DIRECTION, or CROSS LINE as the Detection mode. You can set up to 8 Detection area and 8 mask areas for each setting. You can set up to two combinations of areas and detection conditions and save them as [Detection program 1] and [Detection program 2].



a: alarm occurrence notification area, b: drawing area, and c: detection condition setting

3.3.1 Alarm notification area

When AI-VMD detects moving bodies, the alarm icon and the icons for the four detection modes turn on. Click the alarm icon to clear the alarm state and turn off all the icons.

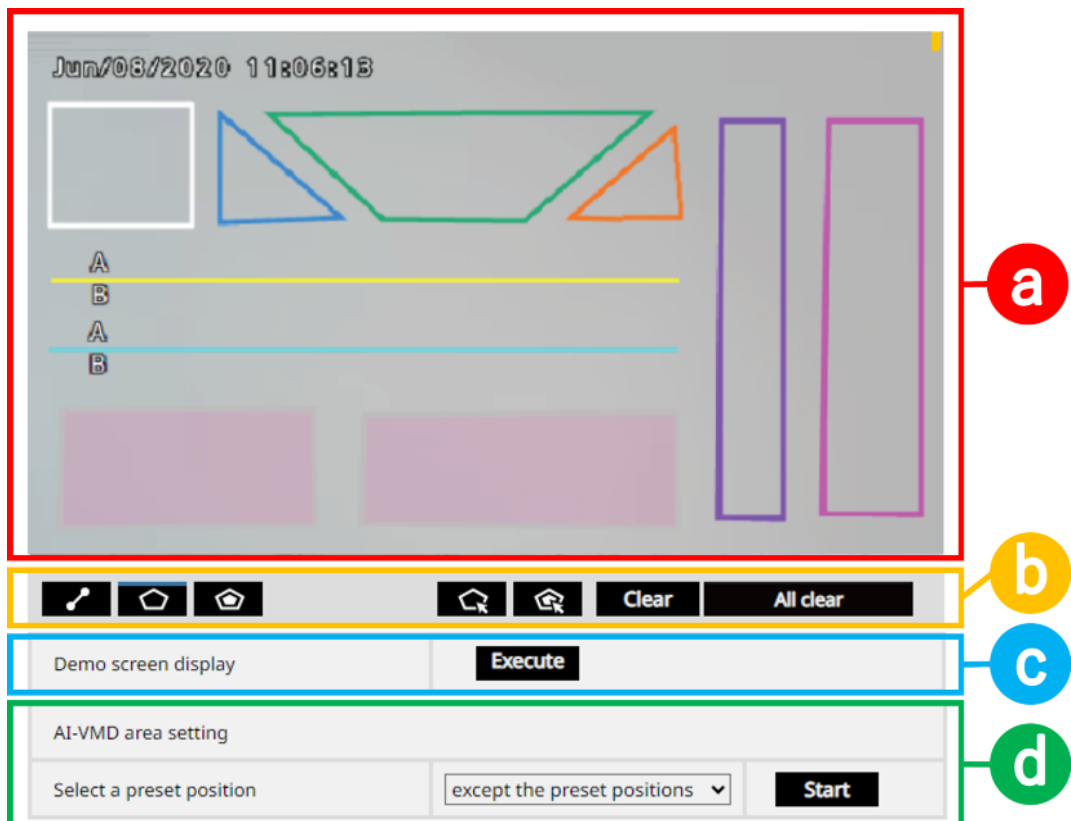
3 Basic settings

3.3 AI motion detection setting



- ① Alarm ICON
- ② CROSS LINE
- ③ INTRUDER
- ④ LOITERING
- ⑤ DIRECTION

3.3.2 Drawing area (for setting the detection areas)



a: camera image screen, b: Paint type, c: Demo screen display, d: Position selection

Camera video screen

This window draws the detection area or detection lines.

To draw, select the [Detection area (polygon)] or [CROSS LINE] icons you want to draw from the [Paint type] and drag them to the [Camera video screen].

An alarm is generated when the actuator is identified within the Detection area set by drawing.

An alarm is generated when the movement traverses the set detection line.

Paint type

Click the icon to select the drawing format.



- ① CROSS LINE: Draws detection lines for CROSS LINE.
- ② Detection area: Draws Detection area as a polygon (up to 16 sides).
- ③ Mask Area (polygon): Draws the mask area as a polygon (up to 16 sides).
- ④ Detection area: Select the drawn Detection area.
- ⑤ Mask Area (Select): Select the drawn mask area.
- ⑥ Delete: Deletes the selected Detection area and mask areas.
- ⑦ All Delete: Deletes all drawn Detection area and mask areas.



- When you draw a Detection area (polygon) or mask area (polygon), you complete the area setting by selecting the start point at the end.
- The Detection area, detection line, and mask area selected in the Detection area, Mask Area (Select) can be changed in size, length, and shape by dragging the corners and end points of the frames. You can also move by dragging the inside of the frame or the line.
- To delete a Detection area or detection line, when several Detection area or detection lines overlap, left-click the mouse in the overlapping area to switch the selected frames in turn.
- The center under the detection frame is the position of the detection frame. Set Detection area so that the position of this detection frame is Detection area. Refer to the following pages for the detection frame.
→6 Operation
- Multiple Detection area, detection lines, and mask areas cannot be selected at the same time.
- By default, the entire drawing area is set to Detection area.

- If you change the [Image capture mode] [Image rotation] in the [Setup] menu of the camera, the Detection area and mask area settings return to the default settings.
- The mask area is the same in [detection program 1] and [detection program 2], and the count function setting.

Demo screen display

Click to display the demo screen.

Select a preset position (for PTZ cameras only)

For PTZ cameras, set the Detection area and mask area for each preset position.

Select the preset position to be set as follows.

Preset positions 1 to 16: Preset positions 1 to 16

Out of preset position: Preset positions 17 to 256 and out of preset position (common)

Start (PTZ camera only)

Click to move to the selected preset position.



No alarm is notified during camera PTZ operation.

3.3.3 Detection condition setting

Detection program 1 and Detection program 2

Select the [Detection program 1] and [Detection program 2] tabs to set one or two detection criteria.

The two conditions can be executed simultaneously or separately, depending on the scheduling.

See the following pages for schedule settings.

→ [3.6 Schedule setting](#)



- In the initial setting of the schedule, Detection program 1 and Detection program 2 are always valid
- When using i-PRO Active Guard, only alarms generated by Detection program 1 will be notified as events.

Detection area

Up to eight Detection area and detection lines are distinguished by line colors.

The colors of drawing lines are set in order from [1 (White)].

Detection object

For each Detection area, check the objects (moving objects) you want to detect.

Three types of Detection object are available:

- Human
- Vehicle (ordinary car, bus, truck)
- Bicycle (Motorcycle, bicycle)

Default setting: Human, Bicycle, and Vehicle are checked



- The three Detection object can also be used in combination.
- If you want to detect all motion, check all three.
- If more than one Detection object is selected, the result is output in the order of precedence of the vehicles, bicycles, and humans. Unchecking for unnecessary Detection object may result in better results. For example, if a human stands in front of a car, the human may be output as a vehicle. Unchecking the vehicle may result in output as a human.

Detection mode

Select the detection modes for the set Detection area and detection lines.

INTRUDER: Detects that moving bodies have intruded the detection area.

LOITERING: Detects that moving bodies have loitered in the detection area for the fixed time.

DIRECTION: Detects that moving bodies have moved in the direction you specified within the detection area.

CROSS LINE: Detects that moving bodies have crossed the detection line in the direction you specified.

Default setting: INTRUDER

Direction setup

If Detection mode is [DIRECTION] or [CROSS LINE], set the detection orientation.

For [DIRECTION], you can choose from the following eight directions:

Upper: Detected when moving upward.

Upper right: Detected when moving in the upper right direction.

Right: Detected when moving in the right direction.

Lower right: Detected when moving in the lower right direction.

Lower: Detected when moving downward.

Lower left: Detected when moving in the lower left direction.

Left: Detected when moving to the left.

Upper left: Detected when moving in the upper left direction.

Default setting: Left

For [CROSS LINE], select from the following three directions.

A→B: Detected when moving from A to B.

B→A: Detected when moving from B to A.

A↔B: Detected when moving from A to B or from B to A.

Default setting: B→A

[Set] buttons

Click to save the contents of the currently displayed area settings tab.

3.3.4 Area setting procedure

1. Confirm that the [AI motion detection Settings] window is selected.
2. Ensure that the [Detection program 1] tabs are selected.
3. Draw an area for detection (hereinafter referred to as "Detection area") in the drawing area.
Draw a location (hereinafter referred to as the mask area) that you do not want to detect in the Detection area.
Eight Detection area and eight mask armatures can be set respectively.
4. Configure four Detection mode for each Detection area: INTRUDER, LOITERING, DIRECTION and CROSS LINE, respectively.
5. If Detection mode is [DIRECTION] or [CROSS LINE], configure [Direction setup].
6. Save the [Detection program 1] detection condition by clicking [Setup].
7. Select the [Detection program 2] tabs and save the [Detection program 2] detection criteria in steps (3) to (6).

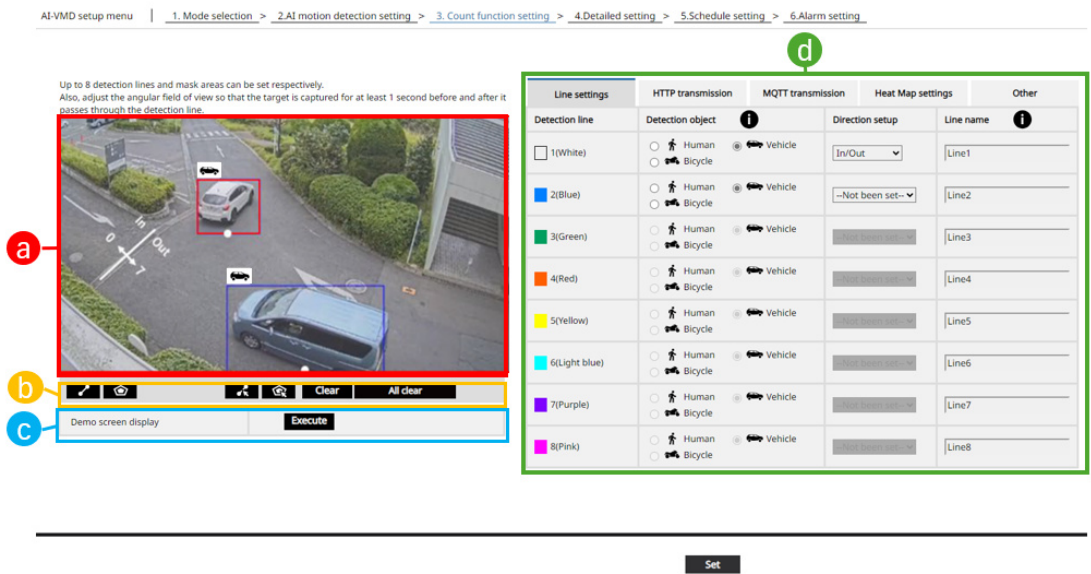
3.4 Set the count function

Configures the count function.

Select a Detection object of humans, vehicles, and bicycles as the lines. You can set up to 8 lines

3 Basic settings
 3.4 Set the count function

and up to 8 mask areas for each setting.



a: Camera video screen, b: Paint type, c: Demo screen display, d: Line setting

Camera video screen

This screen draws the detection line.

To draw, select the [Detection line] icon from the [Paint type] and drag the icon to the [Camera video screen].

When the set detection line is crossed, the number of movement is counted.

Paint type

Click the icon to select the drawing format.



- ① Detection Line: Draws a detection line for count function.
- ② Mask Area (polygon): Draws the mask area as a polygon (up to 16 sides).
- ③ Detection line (Select): Select the drawn detection line.
- ④ Mask Area (Select): Select the drawn mask area.
- ⑤ Delete: Deletes the selected Detection area and mask areas.
- ⑥ All Delete: Deletes all drawn Detection area and mask areas.

Demo screen display

Click to display the demo screen.

3.4.1 Line setting

Detection object

For each Detection area, select the object (moving object) that you want to detect.

Three types of Detection object are available:

- Human
- Bicycle (Motorcycle, bicycle)
- Vehicle (standard car, bus, truck)

Default setting:

When Perpendicular angle mode is selected: Human

When Normal angle mode is selected: Vehicle



Detectable objects differ depending on the selected mode.

Perpendicular angle mode: Human

Normal angle mode: Human, vehicles, two-wheel vehicles

Direction setup

Specifies the direction in which to count.

- Inward
- Outward
- In/Outward

Default setting: In/Outward

Detection line name

The name of each line is set to 20 characters or less. The configured Detection line name is displayed on the i-PRO Active

Guard dashboard.

Default setting: Line 1 to 8

Inputtable Characters: One-byte symbol [~][&]

[Set] button

Click to save the contents of the currently displayed Line Settings tab.

3.4.2 HTTP transmission

Line settings	HTTP transmission	MQTT transmission	Heat Map settings	Other
Count information can be transmitted to an external server via HTTP. Refer to the external interface specification document for HTTP transmission information.				
Transmission destination 1	<input type="checkbox"/> Transmission			
Destination address	<input type="text"/>			Delete
Destination path name	<input type="text" value="/AIPeopleCounting"/>			Delete
SSL	<input checked="" type="radio"/> On <input type="radio"/> Off			
Destination port number	<input type="text" value="443"/> (1-65535)			
User name	<input type="text"/>			
Password	<input type="password"/>			
Transmission interval	<input type="text" value="5 min"/>			

Set the Transmission destination (1 to 4) and notification intervals for HTTP to send counts.

Transmission destination 1, Transmission destination 2, Transmission destination 3, Transmission destination 4

You can notify the count data individually to up to four locations. The settings of the four notification destinations are the same.

Transmission

When the check box is checked, the message is sent.

Default setting: Unchecked

Destination addresses

Enter the IP address or host name of the notification destination. Enter up to 128 half-pitch alphanumeric characters and symbols.

Default setting: blank

Destination pathname

Enter the path name of the notification destination. Enter up to 128 half-pitch alphanumeric characters and symbols.

SSL

Select whether to use SSL for notification.

Default setting: On

Destination port number

Set the port number of the notification destination.

1 ~ 65535

User name

Enter the user name for authentication with the notification destination. Enter up to 128 half-pitch alphanumeric characters and symbols.

Transmission Password

Enter the password for authentication with the notification destination. Enter up to 63 half-pitch alphanumeric characters and symbols.

Transmission interval

Select the time interval to send.

5 s, 10 s, 15 s, 1 min, 5 min, 10 min, 15 min, 30 min, 60 min

Default setting: 5 min

3.4.3 MQTT transmission

Line settings	HTTP transmission	MQTT transmission	Heat Map settings	Other
Count information can be transmitted to an external server via MQTT. Refer to the external interface specification document for MQTT payload.				
Transmission destination	<input type="checkbox"/> Transmission To MQTT transmission setting			
Topic	I-PRO/NetworkCamera/App/AIVMD			
QoS	1 ▾ <input type="checkbox"/> Retain			
Transmission interval	5 min ▾			

- * Perform the settings of the following items on the MQTT setup menu of the camera.
- Camera's MQTT transmission On/Off
- Server setting (Address, port, protocol, user name, password)
- Root CA certificate (Install, enable/disable server certificate verification)

Set the notification content and notification interval for MQTT to send count data.

Transmission

When the check box is checked, the message is sent.

Default setting: Unchecked

To the MQTT transmission setting

Click this button to display the MQTT setting screen of the camera.

Topic

Enter the name of the MQTT topic to be sent. Enter up to 128 half-pitch alphanumeric characters and symbols.

QoS

Select the level of QoS from 0, 1 and 2. Communication quality is high with $0 < 1 < 2$.

0:QoS0 delivers up to one message. Messages are not guaranteed to reach the server.

1:In QoS1, messages are delivered at least once. Messages are guaranteed to reach the Transmission destination, but may be duplicated.

2:QoS2 delivers the message exactly once. Messages are guaranteed to arrive only once without excess or deficiency.

Default setting: 1

Retain

Check this box to have the last notified message saved on the MQTT server.

Default setting: Unchecked

Transmission interval

Select the time interval to send.

5 s, 10 s, 15 s, 1 min, 5 min, 10 min, 15 min, 30 min, 60 min

Default setting: 5 min

3.4.4 Heat map setting

Set the heat map function to aggregate the count data of the human and visualize the passage and retention as a heat map.

Line settings	HTTP transmission	MQTT transmission	Heat Map settings	Other
Heat Map Function		<input type="radio"/> On <input checked="" type="radio"/> Off		
Display a confirmation screen		Execute		

Heat Map Function

Select whether to use the heat map function or not.

Default setting: Off

Display a confirmation screen

When [Execute] is clicked, a confirmation window is displayed in another window.

The confirmation screen displays the latest heat map.

2024/07/17 14:00 - 2024/07/17 15:00



Type of heat map	<input checked="" type="radio"/> Passing Map <input type="radio"/> Loitering Map
Upper limit	<input type="text" value="50"/> <input type="button" value="Reset"/>



Update

Close

Confirmation window for heat map setting

Displaying map information

Displays the latest pass map or residence map. Immediately after opening the confirmation screen, the pass map is displayed.

Date and time of the displayed heat map information

The date and time when the heat map information displayed on the confirmation screen was measured is displayed.

Type of heat map

Displays the type of heat map information displayed on the confirmation screen.

Passage map and Loitering map

Upper limit

Displays the area where a value exceeding the value set was counted in red.

This value represents "The number of people passing through [person]" in the case of a passing

map, and "The average

loitering time [sec] of the loitering people" in the case of a loitering map.

(Passing Map) 3-65535, and (Loitering Map) 1-655

Default setting: 50 (Passing map), 5 (Loitering map)

[Update] buttons


Update the heat map information displayed on the confirmation screen to the latest map information.



The heat map data is saved for each [Count data storage interval] based on the UTC time of 00:00:30 ± time zone after 5 minutes have passed since the [Heat Map Function] was changed to [On].

3.4.5 Others

Others

Line settings	HTTP transmission	MQTT transmission	Heat Map settings	Other
Count data storage interval 	1 hour ▼			
Target to store of count data	<input checked="" type="radio"/> Cross Line Counting <input type="radio"/> Cross Line Counting + Heat Map			
The interval for the transmission of ONVIF® <small>*ONVIF is a trademark of Onvif, Inc.</small>	Cross Line Counting		5 sec ▼	
	Heat Map		1min ▼	

Count data storage interval

Sets the measurement interval of the count data. Creates a file for each measurement interval.

15 minutes, 1 hour, 12 hours, 24 hours

Default setting: 1 hour

Target to store of count data

Set the function to save the count data.

- Cross Line Counting
- Cross Line Counting + Heat Map

Default: Cross Line Counting



The storage period of the count data is as follows.

- When [Cross Line Counting] is selected: 732 days
- When [Cross Line Counting + Heat Map] is selected:
Cross Line Counting: 732 days

3 Basic settings

3.5 Detailed setting (if necessary)

Heat map: 3 days (1 day if [Count data storage interval] is set to [15 min])

※In fact, the data will be stored for a longer period than the above storage period.

The extra storage period depends on the camera time zone setting (up to 23 hours).

Example: Time zone +9.00

•When [Cross Line Counting] is selected: 732 days + 9 hours

•When [Cross Line Counting + Heat Map] is selected:

Cross Line Counting: 732 days + 9 hours

Heat map: 3 days + 9 hours (1 day + 9 hours when [Count data storage interval] is set to [15 min])

The interval for the transmission of ONVIF®

Set the ONVIF Metadata transmission interval.

(CROSS LINE count) 5 s, 10 s, 15 s, 1 min

(heat map) 1 min, 5 min, 15 min

Default setting:(CROSS LINE count) 5 s,

(heat map) 1 min

3.5 Detailed setting (if necessary)

Set the detection sensitivity and duration of the AI-VMD and the size of the human to be detected.

Click [④ Detailed setting] at the top of the window to open the [Detailed setting] window.

AI-VMD setup menu | 1. Operation selection > 2.AI motion detection setting > 3.Count function setting > 4.Detailed setting > 5.Schedule setting > 6.Alarm setting

⓪ ⓫ ⓬ ⓭ ⓮ ⓯ ⓰ ⓱ ⓲ ⓳ ⓴ ⓵ ⓶ ⓷ ⓸ ⓹ ⓺ ⓻ ⓼ ⓽ ⓾ ⓿

Detailed setting

AI VMD alarm

An alarm is issued only when a motion is detected for the first time
 An alarm is issued every time a motion is detected

Threshold setting

Human identification threshold: 20 [Setup]

Vehicle identification threshold: 70 [Setup]

Bicycle identification threshold: 55 [Setup]

Time setting

Intruder detection time: 1s

Loitering detection time: 10s

Direction detection time: 1s

Tailgating detection time: ④ OFF

Speed setting: [Setup >>]

Depth: [Setup >>]

Judgement of movement distance: ④ Middle

Advanced setting: ④

Batch change to the appropriate setting [Execute]

[Set] [Setting data initialization]

[Set] button

Click to save the contents of the advanced tab currently displayed.

[Setting data initialization] button

Clicking this button initializes all AI-VMD settings.

3.5.1 Image quality setting

[Batch change to the appropriate setting]

Click [Execute] to automatically set the appropriate image quality for AI-VMD in a batch. The items changed in the batch setting are the following.

- Super Dynamic: Off
- Light control speed : 8
- White balance adjustment speed: 8
- Digital noise reduction: 128
- Intelligent Auto : Off
- Automatic contrast adjust : Off



- If you select values larger than "Max. 1/30s" on [Image adjust] - [Light control mode] - [Maximum shutter], there may be loss of recognizability.
- If [Batch change to the appropriate setting] fails, update to the latest firmware and the latest version of WV-XAE200WUX before executing the process.

3.5.2 AI-VMD alarm notification operation setting

Sets notification behavior for when alarm notification conditions are met.

An alarm is issued only when a motion is detected for the first time:

Notification the first time the alarm conditions are met only.

An alarm is issued every time a motion is detected:

Notification continuously as long as alarm conditions are met.

Default setting: An alarm is issued every time a motion is detected

3.5.3 Threshold setting

Sets AI-VMD thresholds. This setting is common to all detection conditions.

[Human identification threshold]

Set the detection threshold for detecting as a human.

The smaller the value, the easier it is to detect as a human, but it is easier to detect incorrectly.

1~99

[Vehicle identification threshold]

Set the detection threshold for detecting as a vehicle.

The smaller the value, the easier it is to detect as a vehicle, but it is easier to detect incorrectly.

1~99

[Bicycle identification threshold]

Set the detection threshold for detecting as a bicycle.

The smaller the value, the easier it is to detect it as a bicycle, but it is easier to detect it incorrectly.

1~99

3.5.4 Time setting

Sets the time from detection to alarm generation.

[Intruder detection time]

Sets the time from the detection of intrusion to the alarm generation.

0.2s, 0.4s, 1s, 2s, 3s, 4s, 5s, 10s

Default setting: 1s

[Loitering detection time]

Sets the time from the detection of stagnation until the alarm is generated.

10s, 20s, 30s, 1min, 2min, 5min, 10min, 15min, 20min, 30min, 40min, 50min, 60min

Default setting: 10s



Make sure that the detection frame continues to be displayed stably within the set time.

[Direction detection time]

Sets the time until the object continues to move in the specified direction and the alarm is generated.

1s, 2s, 3s, 4s, 5s, 10s

Default setting: 1s



Depending on the movement of the object, the time until the alarm is generated may be longer than the setting.

[Tailgating detection time]

This sets the time until tailgating detection is triggered. This setting is valid when cross line detection is set. An alarm is triggered when multiple objects are crossings line within a set time period. To detect with high accuracy, adjust the angle of view as follows.

1s, 2s, 3s, 4s, 5s, 6s, 7s, 8s, 9s, 10s

Default setting: Off



- Objects do not overlap each other.
- Objects are visible for more than 1 second before and after crossing the line.

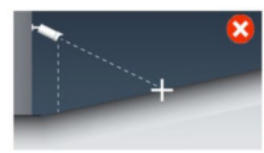
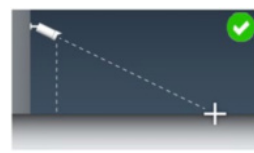
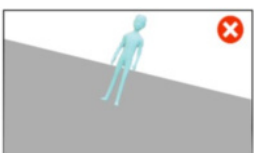
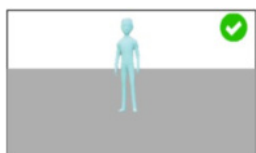
3.5.5 Speed setting

Set the alarm threshold for the speed to be detected. This is only valid for Detection area or detection lines where INTRUDER, DIRECTION or CROSS LINE is selected for Detection mode. Click [Setup >>] to display the [Speed setting] screen.



- The camera used for this function must satisfy the following installation conditions.
- The camera is not tilted to the right or left.
- Flatten around the Detection area

- When this function is used, the Detection object must be displayed for 3 seconds or longer in the field of view.



The camera is not tilted to the right or left.

Flatten around the Detection area



- The speed detection accuracy depends on the viewing method of the subject and the environment. Be sure to check the operation at the installation site.
- This function is not compatible with the [Perpendicular angle mode]. To use this function, select [Normal angle mode] on the [Operation selection] screen.

On/Off the Speed setting

On or Off the Speed setting threshold.

On: Set the alarm threshold for the speed to be detected.

Off: No Speed setting is set.

Default setting: Off

[Use "inches", "feet", and "miles" as unit]

When checked, the km display changes to mile display, m display changes to ft display and cm display changes to inch display.


Default setting: Unchecked

3.5.5.1 When [Speed setting] is [On]

Speed setting ● On ○ Off □ Use "inches", "feet", and "miles" as unit	
Basic settings	
Detection speed	Detection object ● <input type="checkbox"/> Human <input type="checkbox"/> Vehicle <input type="checkbox"/> Bicycle
	Can be set in the range of 0-160 3 <input type="text" value="0"/> km/h or higher <input type="text" value="0"/> km/h or higher <input type="text" value="0"/> km/h or higher
	<input type="checkbox"/> Detect below specified speed <input type="text" value="0"/> km/h or below <input type="text" value="0"/> km/h or below <input type="text" value="0"/> km/h or below
Camera height	<input type="text" value="3.5"/> m *Settings can be made in increments of 0.1.
Marker setting Reflects markers in Depth Setting	Photographic subject size <input type="checkbox"/> <input type="text" value="160"/> cm Clear
	Photographic subject size <input checked="" type="checkbox"/> <input type="text" value="160"/> cm Clear
	Photographic subject size <input checked="" type="checkbox"/> <input type="text" value="160"/> cm Clear
	Photographic subject size <input checked="" type="checkbox"/> <input type="text" value="160"/> cm Clear
Detailed setting ●	Use automatically calculated values v
(1) Camera tilt angle	<input type="text" value=""/> ° *Recommended range is 10°~45°.
(2) Distance from directly under the camera to the center of the angle of view ●	<input type="text" value=""/> m *Settings can be made in increments of 0.1.

For PTZ cameras, [Marker Setting] and [Detailed Setting] will not be displayed. [Camera

Installation Info] will be displayed. For PTZ cameras, [Marker Setting] and [Detailed Setting] are not necessary. Instead, please configure [Camera Installation Info].

Camera Installation Info 	Camera Latitude	<input type="text" value="0"/> (-90.0000000 - 90.0000000)
	Camera longitude	<input type="text" value="0"/> (-180.0000000 - 180.0000000)
	Latitude of center of angle of view	<input type="text" value="0"/> (-90.0000000 - 90.0000000)
	Longitude of center of angle of view	<input type="text" value="0"/> (-180.0000000 - 180.0000000)

Basic settings

[Detection speed]

Set the detection speed as an alarm condition for the detected object. An alarm is triggered only when the moving speed of the detected object exceeds the detection speed.

(1) Check the detection object in the [Detection speed].

Human

Set alarm threshold for the speed of a human.

Vehicle

Set alarm threshold for the speed of a vehicle.

Bicycle

Set alarm threshold for the speed of a bicycle.

AI On-site Learning [X]: [Label1]

Set alarm threshold for the speed of new objects in AI On-site Learning [X].

This item is displayed only when registering new objects for AI On-site Learning. [X] will show a number from 1 to 5, and [Label1] will display the label name of the new object.

(2) Set the detection threshold in the range of 0–160.

(3) If you want to detect at a speed lower than a certain speed, check [Detect below specified speed] and enter the detection threshold value.



- The speed correspondence range depends on the viewing method of the subject and the environment. Estimated speeds are displayed on the demonstration screen.

[Camera height]

Set the height at which the camera is installed.

Default setting: 3.5 m

[Marker setting]

■ **Setting procedure**

Draw markers in at least two locations in the drawing area. Up to four markers can be drawn.

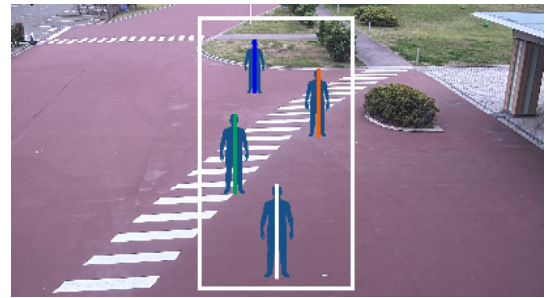
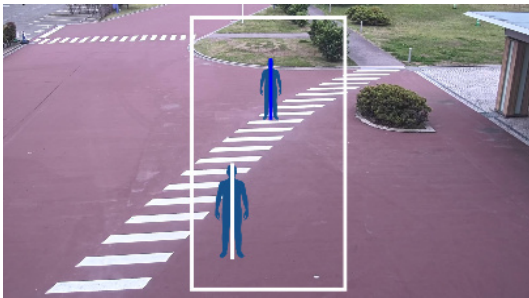
Next, enter a [Photographic subject size] for the drawn markers.

Clicking [Clear] clears the drawn markers.

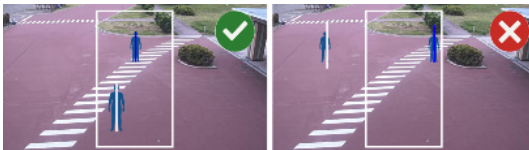
When [Reflects markers in Depth Setting] is clicked, the markers set in the depth setting window are drawn.

[Marker setting] is not required for PTZ cameras.

Example of Marker Setting



For two markers



For four markers




To achieve higher-precision detection, please set the markers as follows:

- All markers should be set according to the actual height of the person.
- Place markers at a minimum of two locations within the white frame: one near and one far from the camera.

(Setting three or more markers may improve accuracy.)

- Enter the exact height of the person in [Photographic subject size].

Detailed setting

Detailed setting 	Use automatically calculated values 
(1) Camera tilt angle	<input type="text"/> °
(2) Distance from directly under the camera to the center of the angle of view 	<input type="text"/> m *Settings can be made in increments of 0.1.

The value to be set here can be calculated automatically by the product. However, direct input may improve the calculation accuracy of the speed. If you want to enter the data directly, select [Use the value directly entered in ①] or [Use the value directly entered in ②] on the [Detailed setting].

[① Camera tilt corner]

Enter the tilt angle at which the camera is located.

Recommended range is 10° to 45°

[② Distance from directly under the camera to the center of the angle of view]

Enter the distance from the bottom where the camera is located to the center of the angle of view.

The center of the field angle is displayed as + in the live image.

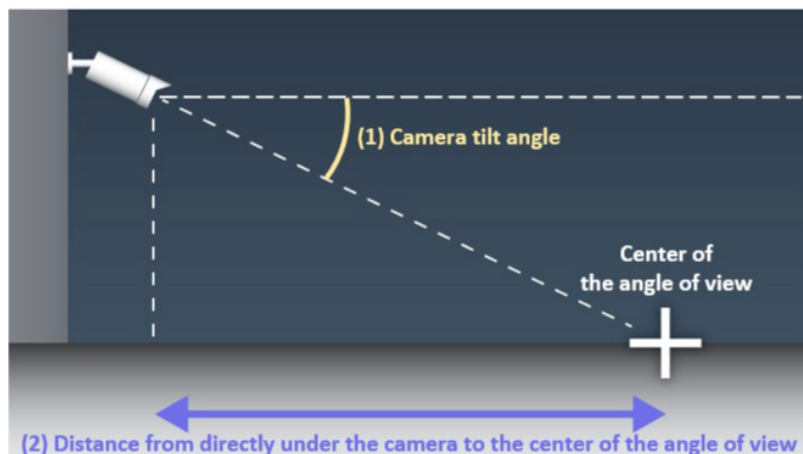


Image of detailed setting

[Camera Installation Info]

For PTZ cameras, please configure [Camera Installation Info].

[Camera Latitude]

Set the latitude of the camera's installation position.

-90.0000000 ~ 90.0000000

Default setting: 0

[Camera Longitude]

Set the longitude of the camera's installation position.

-180.0000000 ~ 180.0000000

Default setting: 0

[Latitude of center of angle of view]

Sets the latitude of the center of the angle of view. The "+" on the image screen is the center

of the angle of view.

-90.0000000 ~ 90.0000000

Default setting: 0

[Longitude of center of angle of view]

Sets the longitude of the center of the angle of view. The “+” on the image screen is the center of the angle of view.

-180.0000000 ~ 180.0000000

Default setting: 0



- The latitude and longitude information of the camera installation location should be obtained from the map information such as the Google map.
- The latitude and longitude information for the center of the angle of view should be entered as the latitude and longitude of the ground level.

3.5.6 Depth

Set the depth. The depth setting is common to both Detection program 1 and Detection program 2.

By setting the depth, objects detected as [humans] that are clearly not of the [humans] size are excluded from the target of alarm generation.

Click [Setup >>] to display [Depth setting] screen.

Depth setting method

Select the depth setting method.

On: Set the depth to the camera manually.

Off: The depth is not set.

Default setting: Off







- Use Normal angle mode.
- When it is often impossible to detect a human by setting it to [On], you may be able to detect it by selecting [Off].

[Use “inch” as unit]

When checked, the cm display changes to the inch display.

Default setting: Unchecked

3.5.6.1 When [Depth setting] is [On]

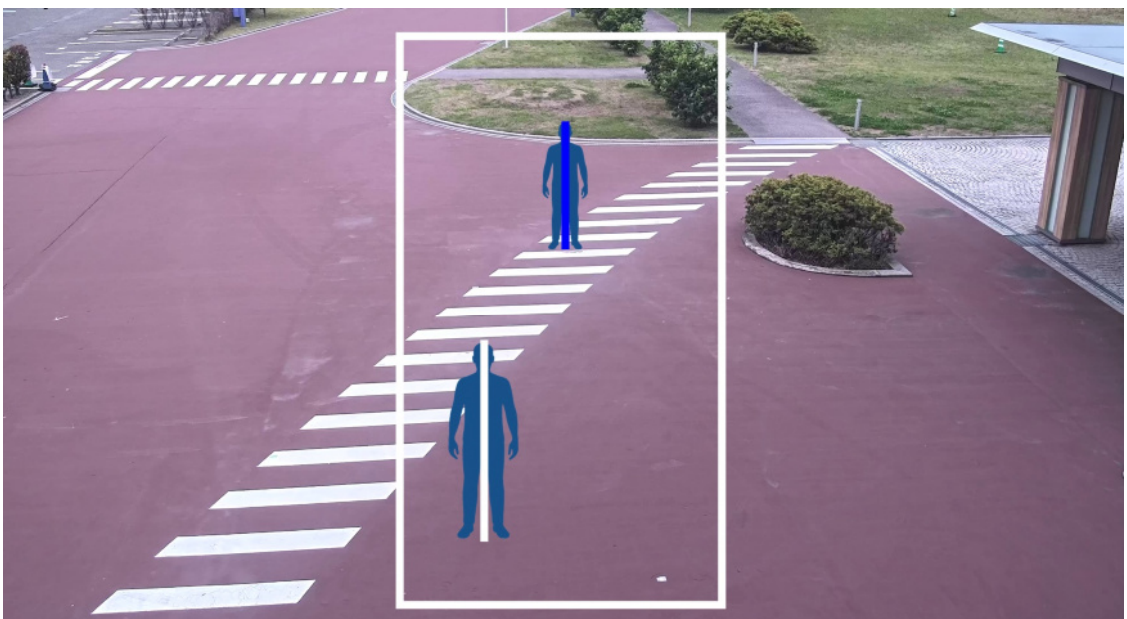
Depth setting		<input type="button" value="On"/> <input type="checkbox"/> Use "inch" as unit
Marker 1 	Photographic subject size	<input type="text" value="160"/> cm(100-200cm) *160cm = 63inch
	<input type="button" value="Clear"/>	
Marker 2 	Photographic subject size	<input type="text" value="160"/> cm(100-200cm) *160cm = 63inch
	<input type="button" value="Clear"/>	
Size setting		
Max. size		<input type="text" value="300"/> %
Min. size		<input type="text" value="50"/> %

■ Setting procedure

Draw marker 1 and marker 2 at two points in the drawing area.

Next, enter each [Photographic subject size] for Marker 1 and Marker 2.

Clicking [Clear] clears the drawn markers.



Example of Depth Setting



To achieve higher-precision detection, please set the markers as follows:

- All markers should be set according to the actual height of the person.
- Place markers at two locations within the white frame: one near and one far from the camera.
- Enter the exact height of the person in [Photographic subject size].

Size setting

When the depth setting is enabled, only the humans detected with sizes between the maximum and the minimum sizes trigger alarms.

Set the maximum size and the minimum size as the reference sizes (100%) for people 160 centimeters (63 inches) in height.

Max. size

Set the maximum size of the human to be detected.

100%, 150%, 200%, 250%, 300%, no limit

Default setting: 300%

Min. size

Set the minimum size of the human to be detected.

10%, 20%, 30%, 40%, 50%, 60%, 70%, 80%, 90%

Default setting: 50%

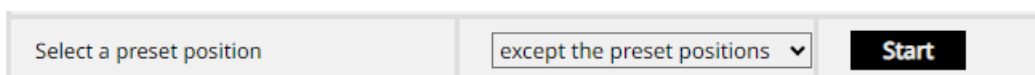


The following is an example of the setting.

e.g. Max. size: 150%, Min. size: 30%

An alarm is generated for a human between 48 cm ($160 \times 30\%$) and 240 cm ($160 \times 150\%$).

3.5.7 Position selection (for PTZ cameras only)



For PTZ cameras, depth setting and Size setting are performed for each preset position.

Select the preset position to be set as follows.

Preset positions 1 to 16:Preset positions 1 to 16

Out of preset position:

Preset positions 17 to 256 and out-of-preset positions (common)

3.5.8 Movement amount judgment

The alarm threshold for the movement to be detected can be set.

- Off: This alarm sounds even if the movement of the object is very small.
- Low: This alarm sounds even if the movement of the object is small.
- Middle: Default setting
- High: This alarm sounds when a large movement of an object is detected.

[Off] and [Low] may be useful for scenes where objects move forward from the rear when the camera is at a small angle. [High] may help reduce false alarms due to minor movements.



Movement amount judgment is valid only for Detection object who have selected INTRUDER for Detection mode.

3.5.9 Advanced setting



Advanced setting the AI-VMD. Clicking + on the left side of the Advanced setting expands the items and displays the detailed settings.

Clicking the - mark on the left side of the Advanced setting will return to the previous window.

[Motion detection threshold]

Set the detection threshold for the movement of the object to be detected. This setting is reflected in the detection threshold for all objects.

The smaller the value, the easier it is to detect, but it is easier to detect incorrectly.

1~7

[AI-VMD information addition]

You can set whether to add AI-VMD data (detection frame, Detection object type) to video data or to display detection frame and Locus in live video of web browser.

When set to [On (with live display [with blue frame])], a blue frame is displayed when a movement is detected in the screen. When the detected motion enters the Detection area and an alarm is generated, the frame color turns red. The Locus of the detected moving object is indicated by a green line. Displays the Locus for the most recent 3 seconds.

From * V3.20, Locus is hidden.

The setting of adding AI-VMD data does not affect the alarm operation.

Off: AI-VMD does not add data. Also, the detection frame and Locus are not displayed.

On: Adds AI-VMD data, but does not display detection frame or Locus.

On(with live display):

Adds AI-VMD information and displays detection frame and Locus information. The blue frame is not displayed.

On(with live display [with blue frame]):

Adds AI-VMD data and displays detection frame and Locus. In addition to the red frame, the blue frame is also displayed.

Default setting: On (with live image display)

[Additional information type]

Sets the information to be added to the video data and the type of frame to be displayed in the live image of the web browser.

This setting is enabled when the above [AI-VMD Information addition] setting is set to [On (with live display)] or [On (with live display [blue frame])] or [On].

After * V3.20, the AI frame (green frame) will not be displayed.

With detection object information (alarm frame information):

Position information of detected object (human, vehicles, bicycles), the location of alarm frame (red frame), and motion detection frame (blue frame) is added.

With detection object information (AI frame information):

Adds information about the detected object (human, vehicles, bicycles) and the location of AI detected AI frames (green frame).

Without detected object information:

Only the positional information of the location of alarm frame (red frame) and the motion detection frame (blue frame) is added. The detected object information (human, vehicles, bicycles) is not added.

Default setting: With detection object information (alarm frame information)

[Detection Frame Notification]

Configure the notification conditions for detection frame positions in the ONVIF Analytics Stream. The display of detection frames on the demo screen will also be updated according to these settings.

Always notify:

Sends position information for alarm frames (red frame) and motion detection frames (blue frame) of detected objects.

Notify frames in detection area only:

Sends position information for alarm frames (red frame) and motion detection frames (blue

frame) of objects detected within the designated detection area.

Notify frames immediately after alarm in detection area:

Sends position information for alarm frames (red frame) of objects detected within the detection area only at the time of initial detection.

Default setting: Always notify

[Simultaneous detection of detection objects]

When On, an alarm is notified when all of the selected detection objects are detected within the detection area for which Intruder, Loitering or Direction is selected as the detection mode.

Default setting: Off

[Alarm notification at the completion of detection]

Select whether to send an alarm when INTRUDER or LOITERING is finished.

Default setting: Off



When [Alarm notification at the completion of detection] is set to ON, the alarm may be notified regardless of the [Alarm deactivation time] of the camera.

[Target to which the upper limit of the detection size is applied]

Apply the upper limit to the selected Detection object size among humans, vehicles, or bicycles. The selected Detection object excludes detection results with width or height of 1000 pixels or more.

Default setting: humans, vehicles, and bicycles are checked

[Settings related to ONVIF® Metadata]

Set the settings related to ONVIF Metadata.

Give the ClassCandidate to Analytics Stream

Select whether to attach a Class Candidate tag to the Analytics Stream.

Default setting: On

[Latitude / longitude sending settings]

Sets the latitude and longitude to be transmitted. Click [Setup >>] to display [Latitude / longitude sending settings] screen.



- The camera used for this function must satisfy the following installation conditions.
- The camera is not tilted to the right or left.
- Flatten around the Detection area

3 Basic settings

3.5 Detailed setting (if necessary)



The camera is not tilted to the right or left.

Flatten around the Detection area








- The accuracy of detecting latitude and longitude depends on how the subject is viewed and the environment. Be sure to check the operation at the installation site.
- Use Normal angle mode.

Latitude / longitude sending settings

When [Latitude / longitude sendings] is set to [On], the software will send the object detection results as latitude and longitude position information in ONVIF. For cameras other than the PTZ camera, the following setting screen is displayed. For PTZ cameras, the [Marker setting] and [Detailed setting] menus are not displayed. [Marker setting] and [Detailed setting] are not required for PTZ cameras.

3 Basic settings

3.5 Detailed setting (if necessary)

Latitude / longitude sending settings 		<input checked="" type="radio"/> On <input type="radio"/> Off
Basic settings		
Camera Installation Info 	Camera Latitude	<input type="text" value="0"/> (-90.0000000 - 90.0000000)
	Camera longitude	<input type="text" value="0"/> (-180.0000000 - 180.0000000)
	Latitude of center of angle of view	<input type="text" value="0"/> (-90.0000000 - 90.0000000)
	Longitude of center of angle of view	<input type="text" value="0"/> (-180.0000000 - 180.0000000)
	Azimuth 	<input checked="" type="checkbox"/> Automatic azimuth calculation <input type="text" value="0"/> ° (0.0 - 359.9)
Camera height	<input type="text" value="3.5"/> m *Settings can be made in increments of 0.1.	
Marker setting Reflects markers in Depth Setting	Photographic subject size <input type="checkbox"/>	<input type="text" value="160"/> cm <input type="button" value="Clear"/>
	Photographic subject size <input checked="" type="checkbox"/>	<input type="text" value="160"/> cm <input type="button" value="Clear"/>
	Photographic subject size <input type="checkbox"/>	<input type="text" value="160"/> cm <input type="button" value="Clear"/>
	Photographic subject size <input type="checkbox"/>	<input type="text" value="160"/> cm <input type="button" value="Clear"/>
Detailed setting 	<input type="text" value="Use automatically calculated values"/>	
(1) Camera tilt angle	<input type="text" value=""/>	° *Recommended range is 10°~45°.
(2) Distance from directly under the camera to the center of the angle of view 	<input type="text" value=""/>	m *Settings can be made in increments of 0.1.

Basic settings

[Camera Installation Info]

Set the camera position. If [Azimuth] > [Automatic azimuth calculation] is checked, AI-VMD will calculate the azimuth angle from [Camera Latitude/Longitude] and [Latitude/Longitude of center of angle of view] on the map.

[Camera Latitude]

Set the latitude of the camera's installation position.

-90.0000000 ~ 90.0000000

Default setting: 0

[Camera Longitude]

Set the longitude of the camera's installation position.

-180.0000000 ~ 180.0000000

Default setting: 0

[Latitude of center of angle of view]

Sets the latitude of the center of the angle of view. The “+” on the image screen is the center

of the angle of view.

-90.0000000 ~ 90.0000000

Default setting: 0

[Longitude of center of angle of view]

Sets the longitude of the center of the angle of view. The “+” on the image screen is the center of the angle of view.

-180.0000000 ~ 180.0000000

Default setting: 0

[Azimuth]

[Automatic azimuth calculation] is checked.

The azimuth angle is calculated from the latitude and longitude of the camera and the latitude and longitude of the center of the angle of view.

[Automatic azimuth calculation] is unchecked.

Set the azimuth angle of the camera’s installation position. Setting the latitude and longitude of the center of the field of view is not required.

0.0 ~ 359.9

Default setting: 0



- The latitude and longitude information of the camera installation location should be obtained from the map information such as the Google map.
- The latitude and longitude information for the center of the angle of view should be entered as the latitude and longitude of the ground level.

[Automatic azimuth calculation] is checked.

- For PTZ cameras, if the PAN operation is performed before clicking the [Set] button, the azimuth angle will not be automatically calculated after the PAN operation. If a PAN operation is performed between entering the latitude and longitude of the center of the angle of view and clicking the [Set] button, enter the latitude and longitude of the center of the angle of view again.
- For PTZ cameras, once the azimuth angle is set by clicking the [Setup] button, there is no need to re-set the azimuth angle after any PTZ operation; AI-VMD uses the camera’s PTZ information to output latitude and longitude.

[Automatic azimuth calculation] is unchecked.

- The azimuth angle is the angle of the camera’s center clockwise with the north at 0 degrees. Measure using a compass.

The following settings are the same as those of [Speed setting].

[Camera height]

Set the height at which the camera is installed.

Default setting: 3.5 m

[Marker setting]

■ **Setting procedure**

Draw markers in at least two locations in the drawing area. Up to four markers can be drawn.

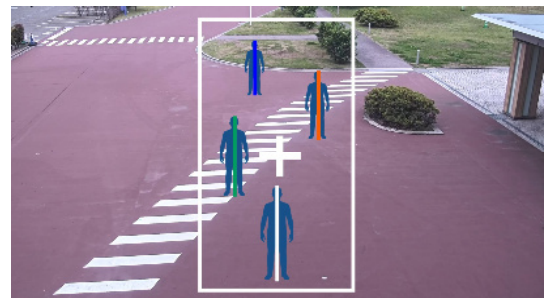
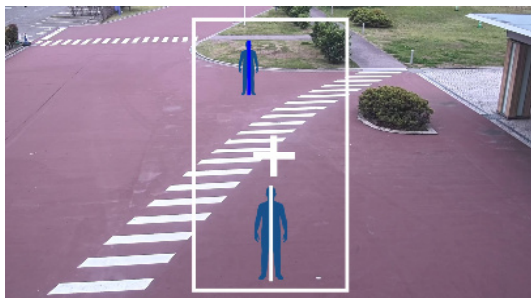
Next, enter a [Photographic subject size] for the drawn markers.

Clicking [Clear] clears the drawn markers.

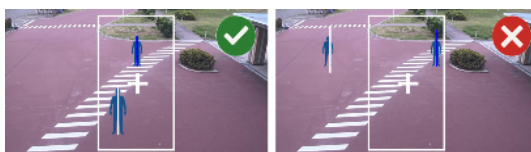
When [Reflects markers in Depth Setting] is clicked, the markers set in the depth setting window are drawn.

[Marker setting] is not required for PTZ cameras.

Example of Marker Setting



For two markers



For four markers




To achieve higher-precision detection, please set the markers as follows:

- All markers should be set according to the actual height of the person.
- Place markers at a minimum of two locations within the white frame: one near and one far from the camera.

(Setting three or more markers may improve accuracy.)

- Enter the exact height of the person in [Photographic subject size].

Detailed setting

Detailed setting 	Use automatically calculated values 
(1) Camera tilt angle	<input type="text"/> °
(2) Distance from directly under the camera to the center of the angle of view 	<input type="text"/> m *Settings can be made in increments of 0.1.

The value to be set here can be calculated automatically by the product. However, direct input may improve the calculation accuracy of latitude and longitude. If you want to enter the data directly, select [Use the value directly entered in ①] or [Use the value directly entered in ②] on the [Detailed setting].

[① Camera tilt angle]

Enter the tilt angle at which the camera is located.

Recommended range is 10° to 45°

[② Distance from directly under the camera to the center of the angle of view]

Enter the distance from the bottom where the camera is located to the center of the angle of view.

The center of the field angle is displayed as + in the live image.

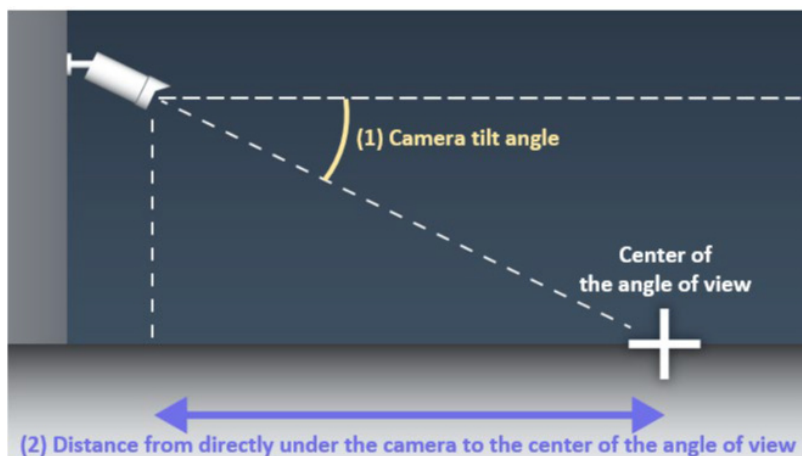


Image of detailed setting



•For PTZ cameras, [Detailed setting] is not required.

[Reference point for detecting objects]

You can select the reference point at which an object is judged to have entered the detection area

or crossed the detection line. The reference point for detecting objects is displayed as a white dot on the configuration and demo screens of this extension software.

Default setting: Center of bottom edge

3.6 Schedule setting

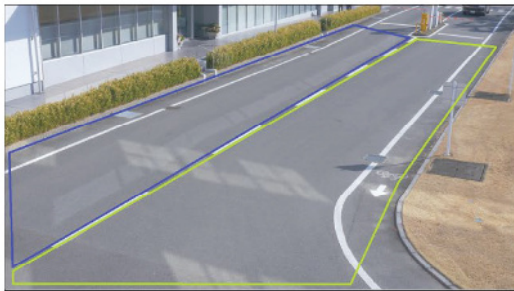
The initialization of AI-VMD schedules is always enabled by the Detection setting 1 and Detection setting 2.

To change the operation schedule, use the setting screen of the camera main unit to make the settings.

Refer to the camera operation manual for details.

AI-VMD setup menu | 1. Mode selection > 2. AI motion detection setting > 3. Count function setting > 4. Detailed setting > 5. Schedule setting > 6. Alarm setting

本 日 未 読



To perform the detailed settings for schedule, perform the settings on the setup menu of the camera.
To enable the schedule of the count function, enable "Detection setting 1" or "Detection setting 2".
At the default, schedules of both "Detection setting 1" and "Detection setting 2" are active for 24 hours.

3.7 Alarm setting

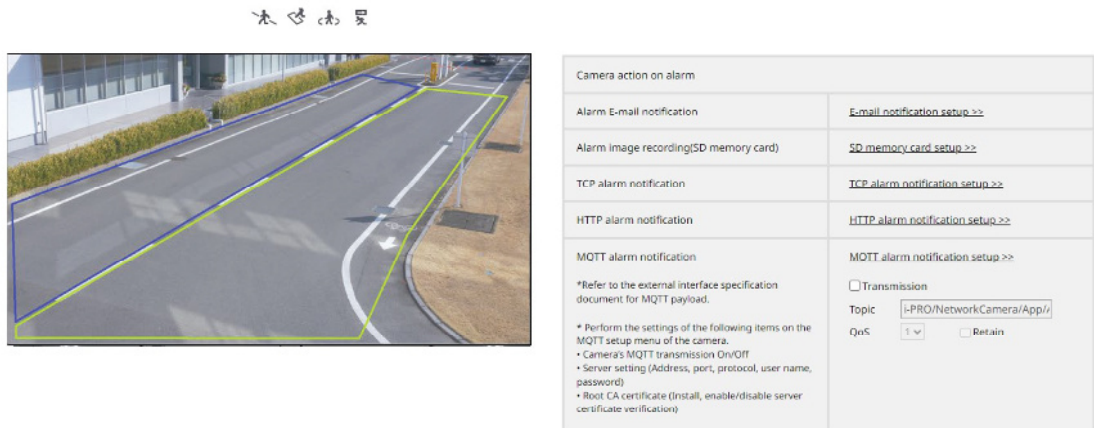
Refer to the operation manual of the camera for the basic TCP alarm notification settings and other alarm settings.

Clicking [⑥ Alarm setting] at the top of the window opens the [Alarm Settings] window.

3 Basic settings

3.7 Alarm setting

AI-VMD setup menu | [1. Mode selection](#) > [2.AI motion detection setting](#) > [3. Count function setting](#) > [4.Detailed setting](#) > [5.Schedule setting](#) > [6.Alarm setting](#)



Alarm E-mail notification

[E-mail notification setup]

Click to display the mail setting screen of the camera.

Alarm image recording(SD memory card)

[SD memory card setup]

Click this button to display the SD Memory Card setting screen on the camera.

TCP alarm notification

[TCP alarm notification setup]

Clicking this button displays the TCP alarm notification settings window for the camera.

HTTP alarm notification

[HTTP alarm notification setup]

Clicking this button displays the HTTP alarm notification settings window for the camera.

MQTT alarm notification

[MQTT alarm notification setup]

Click this button to display the MQTT setting screen of the camera.

[Transmission]

When the check box is checked, the message is sent.

Default setting: Unchecked

[Topic]

Enter the name of the MQTT topic to be sent. Enter up to 128 half-pitch alphanumeric characters and symbols.

[QoS]

Select the level of QoS from 0, 1 and 2. 0<1<Communication quality is high with 2.

0:QoS0 delivers up to one message. Messages are not guaranteed to reach the server.

1:In QoS1, messages are delivered at least once. Messages are guaranteed to reach the Transmission destination, but may be duplicated.

2:QoS2 delivers the message exactly once. Messages are guaranteed to arrive only once without excess or deficiency.

Default setting: 1

[Retain]

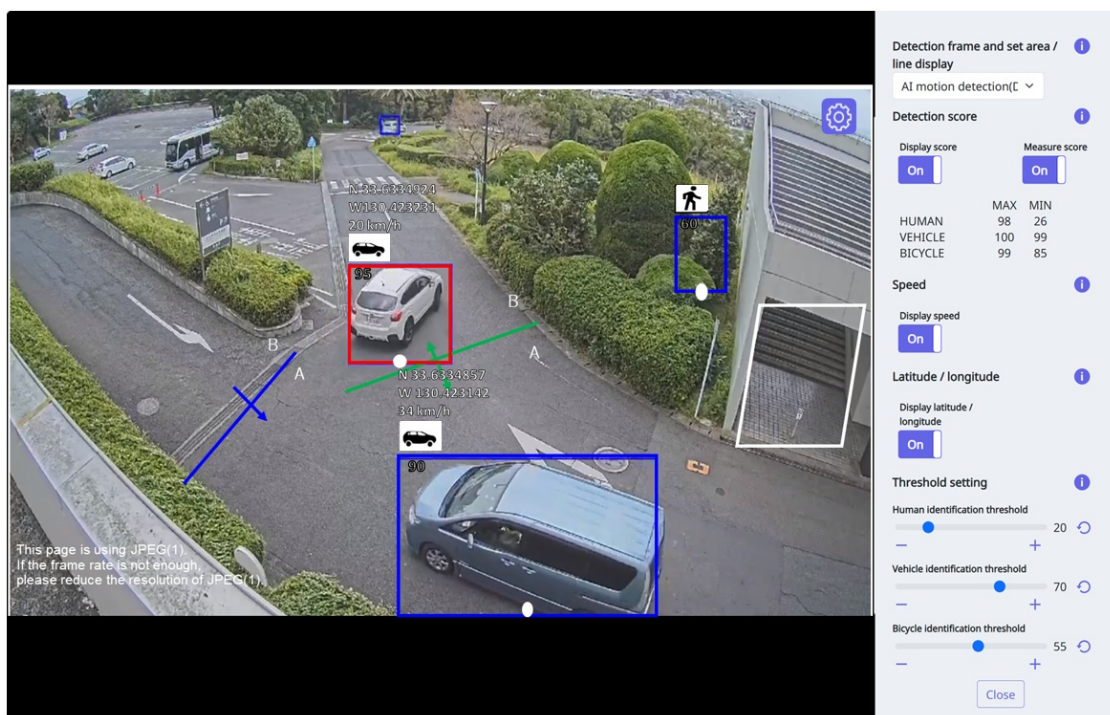
Select to save the last message to the MQTT server.

Default setting: Off

4 Demo screen

The AI motion detection and count function have Demo screen display buttons, respectively, and the demo screen can be displayed by clicking on them.

4.1 AI motion detection



[Setup] button

Click to show/hide configuration items displayed on the demo screen.



Setting button

[Detection frame and set area/line display]

Select the detection results to be displayed on the demo screen.

AI motion detection (Detection setting 1): Displays a demo screen with the detection results set in AI motion detection (Detection setting 1)

AI motion detection (Detection setting 2): Displays a demo screen with the detection results set in AI motion detection (Detection setting 2)

Count function: Displays a demo screen with the detection results set in the Count function.

[Display score]

When the switch is set to [On], the detection score is displayed in the upper left of the detection frame.

[**] may be displayed when the detection score is below the threshold.

[Measure score]

When set to [On], the maximum and minimum values of the detection score are measured and the measurement results (MAX/MIN) are displayed on the demonstration screen. When set to [Off], measurement is stopped.

[Display speed]

This is only displayed when [Detection frame and set area/line display] is set to AI motion detection (Detection setting 1) or AI motion detection (Detection setting 2).

When the switch is set to [On], the estimated speeds of people, vehicles and motorcycles are displayed in the upper left corner of the icon.

If [Speed setting] is set to [Off], it is not displayed. If the estimated speed is too small, it may not be displayed.

[Display latitude / longitude]

This is only displayed when [Detection frame and set area/line display] is set to AI motion detection (Detection setting 1) or AI motion detection (Detection setting 2).

When the switch is set to [On], the estimated speeds of people, vehicles and motorcycles are displayed in the upper left corner of the icon.

If [Latitude / longitude sending settings] is set to [Off], it is not displayed.

[Threshold setting]




Human identification threshold: Detects when the MIN of [Measure score] of a human exceeds this threshold.

Vehicle identification threshold: Detects when the Min of [Measure score] of a vehicle exceeds this threshold.

Bicycle identification threshold: Detects when the Min of [Measure score] of a bicycle exceeds this threshold.

[Icons]

If the score is [On], the Detection object icon is displayed in the upper left corner of the detection frame.

Human:  , Vehicle:  , Two-wheel vehicles: 

[Detection area]

The set Detection area is displayed in color.

Area 1: white, Area 2: blue, Area 3: green,

Area 4: red, Area 5: yellow, Area 6: light blue,

Area 7: purple, Area 8: pink

Solid Line: Areas set to [On]

Dashed line: Areas set to [Off]

[Detection line]

The set detection line is displayed in color.

Line 1: white, Line 2: blue, Line 3: green,

Line 4: red, Line 5: yellow, Line 6: light blue,

Line 7, purple; Line 8, pink

Solid Line: Lines set to [On]

Dashed line: Lines set to [Off]

[Direction label]

Cross line detection displays the orientation (Cross line detection: A, B count function: In, Out) in which the number of people is counted.

[Detection frame]

When the target object is detected, a frame is displayed.

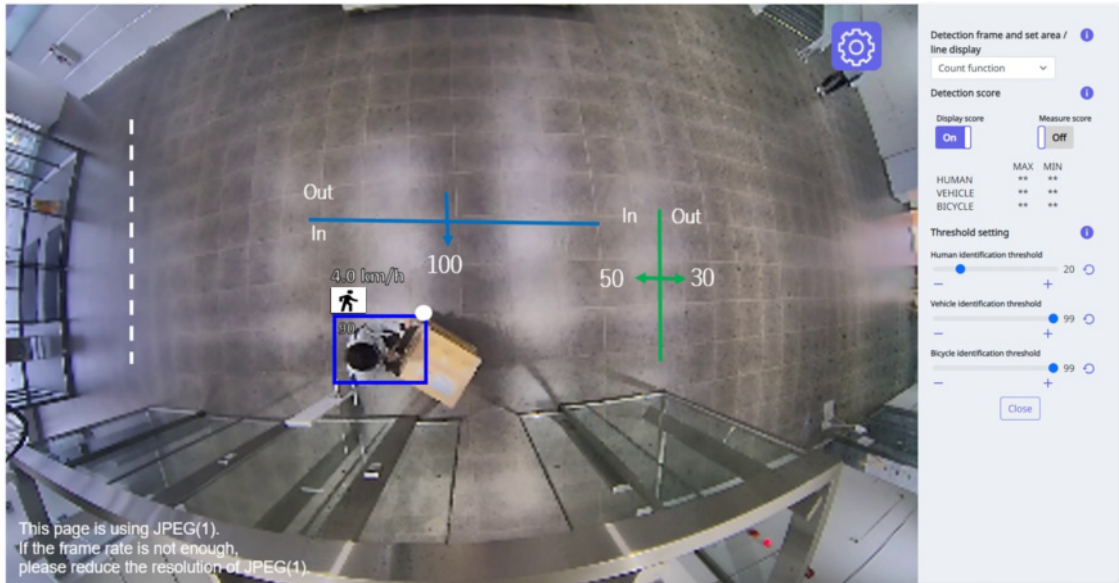
Red frame: Displays the object in the area where the alarm was generated and the object crossing the line in the setting direction.

Blue box: Displays detected objects.

[White dots in detection frame]

Shows the foot position of the human's detection frame.

4.2 Count function



[Number of counts] (count function only)

The number of objects counted in the set direction is displayed in color for each line.

Line 1: white, Line 2: blue, Line 3: green,
Line 4: red, Line 5: yellow, Line 6: light blue,
Line 7, purple; Line 8, pink



The speed and latitude / longitude displayed on the demo screen is the estimated values calculated with this product. This may differ from the actual values.



- Use Mozilla Firefox, Google™ Chrome™, and Microsoft Edge to display the demo screen.

It does not support Internet Explorer.

- Only one browser can display the demo screen. Simultaneous access by multiple browsers is not supported.

Simultaneous display of AI-VMD and count function demo screens is not supported.

- The detection frame cannot be displayed simultaneously on the setting screen/demo screen of AI-VMD/count function.
- If [On] is selected for data encryption, no image is displayed on the demo screen.
- If used at the same time as the other extension software, the position of the

detection frame may be misaligned with the human on the demo screen.

- It is not recommended to use the demonstration screen in actual operation because it is intended for demonstration.
- If the score display is set to [Off], the score measurement cannot be set to [On].

5 Linking with AI On-site Learning applications

This system can be used in conjunction with the AI On-site Learning application to perform the following:

- Add a new Detection object
- Improve misdetection and omission of human, cars and motorcycles

For information about using the AI On-site Learning application, see the following.

→[AI On-site Learning Application Web-Guide](#)



For information on the combinations and constraints of AI On-site Learning applications and cameras, please see the following.

→[Equipment compatibility<C0103>](#)

5.1 Add a new Detection object

(AI motion detection) Detection Condition Setting

Detection program 1		Detection program 2	
Detection area	Detection object	Detection mode	Direction setup
<input type="checkbox"/> 1(White)	<input checked="" type="checkbox"/> Human <input checked="" type="checkbox"/> Vehicle <input checked="" type="checkbox"/> Bicycle AI On-site learning <input type="checkbox"/> 1	Intruder	Left

(Count function) Line-up

Line settings	HTTP transmission	MQTT transmission	Heat Map settings	Other
Detection line	Detection object	Direction setup	Line name	
<input type="checkbox"/> 1(White)	<input type="radio"/> Human <input checked="" type="radio"/> Vehicle <input type="radio"/> Bicycle AI On-site learning <input type="radio"/> 1	--Not been set--	Line1	

List of On-site learning object




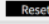


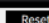
AI On-site learning object 

Object number	Object name	Detection function
1	Label1	Adding a new detection object
2	Unused	Unused
3	Unused	Unused
4	Unused	Unused
5	Unused	Unused

The new Detection object (AI On-site learning object) added in the AI On-site Learning application is added as the Detection object of the product. Up to five additional items can be added.

Only AI On-site learning object for which [Adding a new detection object] is selected as the detection function is added as the Detection object of this product. The AI On-site learning object name and detection function can be checked from the AI On-site learning object list.

Advanced settings

Threshold setting 	Human identification threshold	20  
	Vehicle identification threshold	70  
	Bicycle identification threshold	55  
	Object1(Label1) identification threshold	50  

[Object 1~5 identification threshold]

Only the AI On-site learning object for which [Adding a new detection object] is selected for the detection function is added to the thresholding of the product. The name of AI On-site learning object is displayed in parentheses. The smaller the value, the easier it is to detect objects 1 to 5, but the easier it is to detect incorrectly.


1~99



- Use Normal angle mode.
- The AI On-site learning object name and detection function can only be set in the AI On-site Learning application.
- If you change the AI On-site learning object settings in the AI On-site Learning

application, open the Setup window to update the settings.

5.2 Improve misdetection and omission of human, cars and motorcycles

AI On-site learning object 

Object number	Object name	Detection function
1	Dog	Improving false detection(Human)
2	Bus	Improving missed detection(Vehicle)
3	Unused	Unused
4	Unused	Unused
5	Unused	Unused

If a human, car, or motorcycle is incorrectly detected or missed, the AI On-site Learning application can be used to learn the appropriate scenes to improve accuracy.

The AI On-site learning object after learning can be viewed from the AI On-site learning object list. The Detection object (human, car, motorcycle) selected for improvements is displayed in parentheses of the detection function.



- In the AI On-site learning object that improves incorrect detection or improves detection leakage is selected by the detection function, this product is not added as a Detection object.
- The AI On-site learning object name and detection function can only be set in the AI On-site Learning application.
- If you change the AI On-site learning object settings in the AI On-site Learning application, open the Setup window to update the settings.

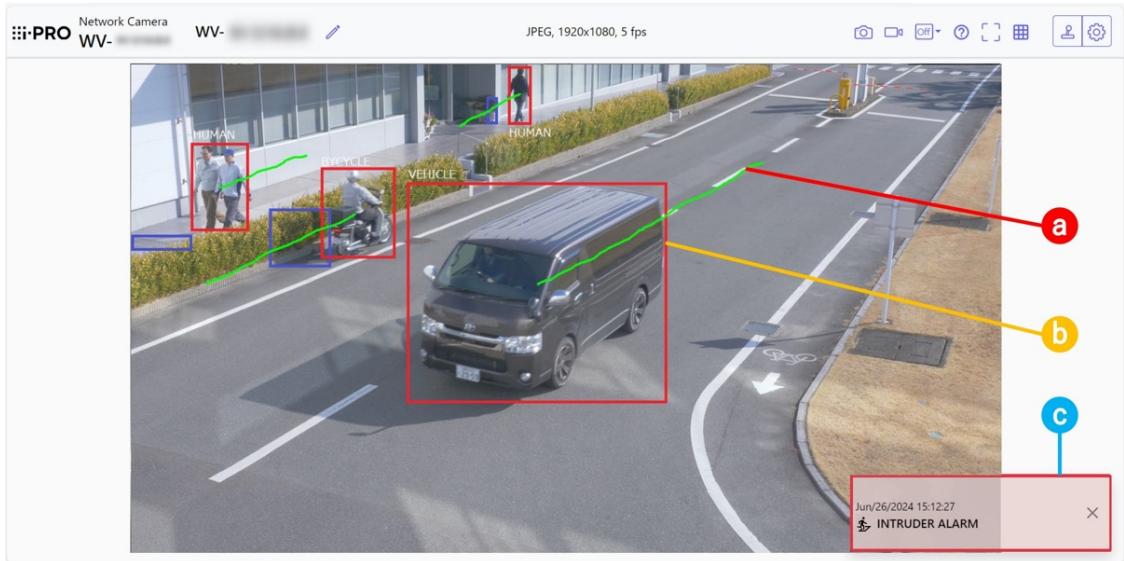
5.3 Demo screen

Please refer to the AI On-site Learning application web guide for details on the demo screen.

→[AI On-site Learning Application Web-Guide](#)

6 Operation

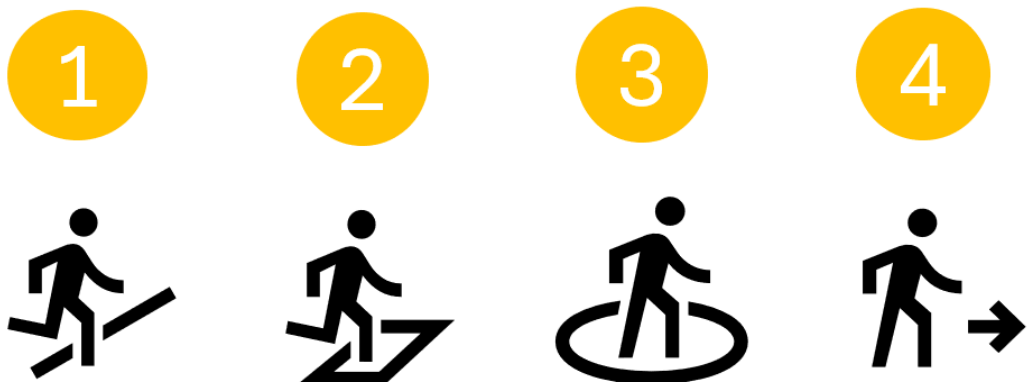
When the required settings are completed, open the camera's web browser to display the image and start operation.



a: Locus, b: detection frame, c: alarm notification

Alarm notification

When the AI-VMD detects an alarm, the alarm message is displayed.



1: CROSS LINE (CROSS LINE), 2: INTRUDER (INTRUDER), 3: LOITERING (LOITERING), 4:

When alarm notification is clicked while alarm is generated, all alarms are reset.



Alarm is also notified when an alarm input is received with a terminal alarm or when a command alarm is received.

“Detection frame (red frame, blue frame)”

When a motion is detected, this motion is displayed in a blue frame. When the detected movement enters the Detection area and an alarm is generated, this movement is displayed in a red frame.

[AI-VMD Information addition] can be set to ON/OFF.

Locus

The Locus where the alarm frame (red frame) moves is displayed in green.

Displays the Locus for the most recent 3 seconds.

Displayed when the alarm frame (red frame) is set to be displayed in the [AI-VMD Information addition] and [Additional information type] settings.



- For cameras that support Internet Explorer, alarm notification may be delayed in some networked environments, even if [Basic]-[Status update mode] is set to [Real time] in the camera setting menu.
- If you configure the AI-VMD Detection area and then change the [Image/Audio]-[Image capture mode] or [Basic]-[Image rotation] in the Camera Settings menu, the Detection area, mask area and depth may be misaligned or initialized. If the [Image capture mode] or [Image rotation] is changed, check the Detection area and mask area settings and the depth settings again.
- If you change the zoom settings after you configure the Detection area for AI-VMD, the Detection area and mask area may be misaligned. If you change the zoom settings, check the Detection area, mask area, and depth settings again.

7 Others

7.1 Specifications

7.1.1 PC environment required

For information about the PC environment, requirements, and supported browsers used for settings, refer to the camera's instruction manual.

7.1.2 Compatible cameras



Refer to the following for the combinations and restrictions of this product and camera.

→[Equipment compatibility](#)<C0103>

7.2 For trademarks and registered trademarks

- Internet Explorer and ActiveX are registered trademarks or trademarks of Microsoft Corporation in the United States and other countries.
- Google Maps are trademarks or registered trademarks of Google LLC.
- Screen photographs are used according to the guidelines of Microsoft Corporation.
- ONVIF is a trademark of ONVIF Inc.

7.3 External interface specifications

- Refer to the [AI Motion Detection I/F Specifications] in the following URLs for the specifications of the external interface.
→[AI motion detection interface specifications](#)<C0323>

7.4 Open Source Software

This product uses the following open source software.

Software name	License Name
OpenCV	Apache-2.0
Cwebsocket	The MIT License
Bjpeg-turbo	The IJG (Independent JPEG Group) License The Modified (3-clause) BSD License The zlib License
Eigen	MPL-2.0

See [Open Source Software] below for the corresponding license text.

Open Source Software

Apache License 2.0

Apache License

Version 2.0, January 2004

<http://www.apache.org/licenses/>

TERMS AND CONDITIONS FOR USE, REPRODUCTION, AND DISTRIBUTION

1. Definitions.

“License” shall mean the terms and conditions for use, reproduction, and distribution as defined by Sections 1 through 9 of this document.

“Licensor” shall mean the copyright owner or entity authorized by the copyright owner that is granting the License.

“Legal Entity” shall mean the union of the acting entity and all other entities that control, are controlled by, or are under common control with that entity. For the purposes of this definition, “control” means (i) the power, direct or indirect, to cause the direction or management of such entity, whether by contract or

otherwise, or (ii) ownership of fifty percent (50%) or more of the outstanding shares, or (iii) beneficial ownership of such entity.

“You” (or “Your”) shall mean an individual or Legal Entity exercising permissions granted by this License.

“Source” form shall mean the preferred form for making modifications, including but not limited to software source code, documentation source, and configuration files.

“Object” form shall mean any form resulting from mechanical transformation or translation of a Source form, including but not limited to compiled object code, generated documentation, and conversions to other media types.

“Work” shall mean the work of authorship, whether in Source or Object form, made available under the License, as indicated by a copyright notice that is included in or attached to the work (an example is provided in the Appendix below).

“Derivative Works” shall mean any work, whether in Source or Object form, that is based on (or derived from) the Work and for which the editorial revisions, annotations, elaborations, or other modifications represent, as a whole, an original work of authorship. For the purposes of this License, Derivative Works shall not include works that remain separable from, or merely link (or bind by name) to the interfaces of, the Work and Derivative Works thereof.

“Contribution” shall mean any work of authorship, including the original version of the Work and any modifications or additions to that Work or Derivative Works thereof, that is intentionally submitted to Licensor for inclusion in the Work by the copyright owner or by an individual or Legal Entity authorized to submit on behalf of the copyright owner. For the purposes of this definition, “submitted” means any form of electronic, verbal, or written communication sent to the Licensor or its representatives, including but not limited to

communication on electronic mailing lists, source code control systems, and issue tracking systems that are managed by, or on behalf of, the Licensor for the purpose of discussing and improving the Work, but excluding communication that is conspicuously marked or otherwise designated in writing by the copyright owner as "Not a Contribution."

"Contributor" shall mean Licensor and any individual or Legal Entity on behalf of whom a Contribution has been received by Licensor and subsequently incorporated within the Work.

2. Grant of Copyright License. Subject to the terms and conditions of this License, each Contributor hereby grants to You a perpetual, worldwide, non-exclusive, no-charge, royalty-free, irrevocable copyright license to reproduce, prepare Derivative Works of, publicly display, publicly perform, sublicense, and distribute the Work and such Derivative Works in Source or Object form.
3. Grant of Patent License. Subject to the terms and conditions of this License, each Contributor hereby grants to You a perpetual, worldwide, non-exclusive, no-charge, royalty-free, irrevocable (except as stated in this section) patent license to make, have made, use, offer to sell, sell, import, and otherwise transfer the Work, where such license applies only to those patent claims licensable by such Contributor that are necessarily infringed by their Contribution(s) alone or by combination of their Contribution(s) with the Work to which such Contribution(s) was submitted. If You institute patent litigation against any entity (including a cross-claim or counterclaim in a lawsuit) alleging that the Work or a Contribution incorporated within the Work constitutes direct or contributory patent infringement, then any patent licenses granted to You under this License for that Work shall terminate as of the date such litigation is filed.
4. Redistribution. You may reproduce and distribute copies of the Work or Derivative Works thereof in any medium, with or without modifications, and in Source or Object form, provided that You

meet the following conditions:

- (a) You must give any other recipients of the Work or Derivative Works a copy of this License; and
- (b) You must cause any modified files to carry prominent notices stating that You changed the files; and
- (c) You must retain, in the Source form of any Derivative Works that You distribute, all copyright, patent, trademark, and attribution notices from the Source form of the Work, excluding those notices that do not pertain to any part of the Derivative Works; and
- (d) If the Work includes a "NOTICE" text file as part of its distribution, then any Derivative Works that You distribute must include a readable copy of the attribution notices contained within such NOTICE file, excluding those notices that do not pertain to any part of the Derivative Works, in at least one of the following places: within a NOTICE text file distributed as part of the Derivative Works; within the Source form or documentation, if provided along with the Derivative Works; or, within a display generated by the Derivative Works, if and wherever such third-party notices normally appear. The contents of the NOTICE file are for informational purposes only and do not modify the License. You may add Your own attribution notices within Derivative Works that You distribute, alongside or as an addendum to the NOTICE text from the Work, provided that such additional attribution notices cannot be construed as modifying the License.

You may add Your own copyright statement to Your modifications and may provide additional or different license terms and conditions for use, reproduction, or distribution of Your modifications, or for any such Derivative Works as a whole, provided Your use, reproduction, and distribution of the Work otherwise complies with

the conditions stated in this License.

5. Submission of Contributions. Unless You explicitly state otherwise, any Contribution intentionally submitted for inclusion in the Work by You to the Licensor shall be under the terms and conditions of this License, without any additional terms or conditions.

Notwithstanding the above, nothing herein shall supersede or modify the terms of any separate license agreement you may have executed with Licensor regarding such Contributions.

6. Trademarks. This License does not grant permission to use the trade names, trademarks, service marks, or product names of the Licensor, except as required for reasonable and customary use in describing the origin of the Work and reproducing the content of the NOTICE file.

7. Disclaimer of Warranty. Unless required by applicable law or agreed to in writing, Licensor provides the Work (and each Contributor provides its Contributions) on an "AS IS" BASIS, WITHOUT WARRANTIES OR CONDITIONS OF ANY KIND, either express or implied, including, without limitation, any warranties or conditions of TITLE, NON-INFRINGEMENT, MERCHANTABILITY, or FITNESS FOR A PARTICULAR PURPOSE. You are solely responsible for determining the appropriateness of using or redistributing the Work and assume any risks associated with Your exercise of permissions under this License.

8. Limitation of Liability. In no event and under no legal theory, whether in tort (including negligence), contract, or otherwise, unless required by applicable law (such as deliberate and grossly negligent acts) or agreed to in writing, shall any Contributor be liable to You for damages, including any direct, indirect, special, incidental, or consequential damages of any character arising as a result of this License or out of the use or inability to use the Work (including but not limited to damages for loss of goodwill, work stoppage, computer failure or malfunction, or any and all other commercial damages or losses), even if such Contributor has been advised of the possibility of such damages.

9. Accepting Warranty or Additional Liability. While redistributing the Work or Derivative Works thereof, You may choose to offer, and charge a fee for, acceptance of support, warranty, indemnity, or other liability obligations and/or rights consistent with this License. However, in accepting such obligations, You may act only on Your own behalf and on Your sole responsibility, not on behalf of any other Contributor, and only if You agree to indemnify, defend, and hold each Contributor harmless for any liability incurred by, or claims asserted against, such Contributor by reason of your accepting any such warranty or additional liability.

END OF TERMS AND CONDITIONS

APPENDIX: How to apply the Apache License to your work.

To apply the Apache License to your work, attach the following boilerplate notice, with the fields enclosed by brackets "[]" replaced with your own identifying information. (Don't include the brackets!) The text should be enclosed in the appropriate comment syntax for the file format. We also recommend that a file or class name and description of purpose be included on the same "printed page" as the copyright notice for easier identification within third-party archives.

Copyright [yyyy] [name of copyright owner]

Licensed under the Apache License, Version 2.0 (the "License");
you may not use this file except in compliance with the License.
You may obtain a copy of the License at

<http://www.apache.org/licenses/LICENSE-2.0>

Unless required by applicable law or agreed to in writing, software distributed under the License is distributed on an "AS IS" BASIS, WITHOUT WARRANTIES OR CONDITIONS OF ANY KIND, either express or implied.

See the License for the specific language governing permissions and limitations under the License.

The MIT License

The MIT License (MIT)

Copyright (c) 2015 Andrew Putilov

Permission is hereby granted, free of charge, to any person obtaining a copy of this software and associated documentation files (the "Software"), to deal in the Software without restriction, including without limitation the rights to use, copy, modify, merge, publish, distribute, sublicense, and/or sell copies of the Software, and to permit persons to whom the Software is furnished to do so, subject to the following conditions:

The above copyright notice and this permission notice shall be included in all copies or substantial portions of the Software.

THE SOFTWARE IS PROVIDED "AS IS", WITHOUT WARRANTY OF ANY KIND, EXPRESS OR IMPLIED, INCLUDING BUT NOT LIMITED TO THE WARRANTIES OF MERCHANTABILITY, FITNESS FOR A PARTICULAR PURPOSE AND NONINFRINGEMENT. IN NO EVENT SHALL THE AUTHORS OR COPYRIGHT HOLDERS BE LIABLE FOR ANY CLAIM, DAMAGES OR OTHER LIABILITY, WHETHER IN AN ACTION OF CONTRACT, TORT OR OTHERWISE, ARISING FROM, OUT OF OR IN CONNECTION WITH THE SOFTWARE OR THE USE OR OTHER DEALINGS IN THE SOFTWARE.

libjpeg-turbo Licenses

libjpeg-turbo is covered by three compatible BSD-style open source licenses:

- The IJG (Independent JPEG Group) License, which is listed in [README.ijg](#)
README.ijg This license applies to the libjpeg API library and associated programs (any code inherited from libjpeg, and any modifications to that code.)
- The Modified (3-clause) BSD License, which is listed below

This license covers the TurboJPEG API library and associated programs, as well as the build system.

- The [zlib License](#)

This license is a subset of the other two, and it covers the libjpeg-turbo SIMD extensions.

Complying with the libjpeg-turbo Licenses

This section provides a roll-up of the libjpeg-turbo licensing terms, to the best of our understanding.

1.If you are distributing a modified version of the libjpeg-turbo source, then:

- i .You cannot alter or remove any existing copyright or license notices from the source.

Origin

- Clause 1 of the IJG License •Clause 1 of the Modified BSD License
- Clauses 1 and 3 of the zlib License

- ii .You must add your own copyright notice to the header of each source file you modified, so others can tell that you modified that file (if there is not an existing copyright header in that file, then you can simply add a notice stating that you modified the file.)

Origin

- Clause 1 of the IJG License •Clause 2 of the zlib License

- iii .You must include the IJG README file, and you must not alter any of the copyright or license text in that file.

Origin

- Clause 1 of the IJG License

2.If you are distributing only libjpeg-turbo binaries without the source, or if you are distributing an application that statically links with libjpeg-turbo, then:

- i .Your product documentation must include a message stating:

This software is based in part on the work of the Independent JPEG Group.

Origin

- Clause 2 of the IJG license

- ii .If your binary distribution includes or uses the TurboJPEG API, then your product documentation must include the text of the Modified BSD License (see below.)

Origin

- Clause 2 of the Modified BSD License

3. You cannot use the name of the IJG or The libjpeg-turbo Project or the contributors thereof in advertising, publicity, etc.

Origin

• IJG License • Clause 3 of the Modified BSD License

4. The IJG and The libjpeg-turbo Project do not warrant libjpeg-turbo to be free of defects, nor do we accept any liability for undesirable consequences resulting from your use of the software.

Origin

• IJG License • Modified BSD License

• zlib License

The Modified (3-clause) BSD License

Copyright (C)2009–2019 D. R. Commander. All Rights Reserved. Copyright (C)2015 Viktor Szathmáry. All Rights Reserved.

Redistribution and use in source and binary forms, with or without modification, are permitted provided that the following conditions are met:

- Redistributions of source code must retain the above copyright notice, this list of conditions and the following disclaimer.
- Redistributions in binary form must reproduce the above copyright notice, this list of conditions and the following disclaimer in the documentation and/or other materials provided with the distribution.
- Neither the name of the libjpeg-turbo Project nor the names of its contributors may be used to endorse or promote products derived from this software without specific prior written permission.

THIS SOFTWARE IS PROVIDED BY THE COPYRIGHT HOLDERS AND CONTRIBUTORS "AS IS", AND ANY EXPRESS OR IMPLIED WARRANTIES, INCLUDING, BUT NOT LIMITED TO, THE IMPLIED WARRANTIES OF MERCHANTABILITY AND FITNESS FOR A PARTICULAR PURPOSE ARE DISCLAIMED. IN NO EVENT SHALL THE COPYRIGHT HOLDERS OR CONTRIBUTORS BE LIABLE FOR ANY DIRECT, INDIRECT, INCIDENTAL, SPECIAL, EXEMPLARY, OR CONSEQUENTIAL DAMAGES (INCLUDING, BUT NOT LIMITED TO, PROCUREMENT OF SUBSTITUTE GOODS OR SERVICES; LOSS OF USE, DATA, OR PROFITS; OR BUSINESS INTERRUPTION) HOWEVER CAUSED AND ON ANY THEORY OF LIABILITY, WHETHER IN CONTRACT, STRICT LIABILITY, OR TORT (INCLUDING NEGLIGENCE OR OTHERWISE) ARISING IN ANY WAY OUT OF THE USE OF THIS

SOFTWARE, EVEN IF ADVISED OF THE POSSIBILITY OF SUCH DAMAGE.

Why Three Licenses?

The zlib License could have been used instead of the Modified (3-clause) BSD License, and since the IJG License effectively subsumes the distribution conditions of the zlib License, this would have effectively placed libjpeg-turbo binary distributions under the IJG License. However, the IJG License specifically refers to the Independent JPEG Group and does not extend attribution and endorsement protections to other entities. Thus, it was desirable to choose a license that granted us the same protections for new code that were granted to the IJG for code derived from their software.

Mozilla Public License Version 2.0

1. Definitions

1.1. "Contributor"

means each individual or legal entity that creates, contributes to the creation of, or owns Covered Software.

1.2. "Contributor Version"

means the combination of the Contributions of others (if any) used by a Contributor and that particular Contributor's Contribution.

1.3. "Contribution"

means Covered Software of a particular Contributor.

1.4. "Covered Software"

means Source Code Form to which the initial Contributor has attached the notice in Exhibit A, the Executable Form of such Source Code Form, and Modifications of such Source Code Form, in each case including portions thereof.

1.5. "Incompatible With Secondary Licenses"

means

(a) that the initial Contributor has attached the notice described in Exhibit B to the Covered Software; or

(b) that the Covered Software was made available under the terms of version 1.1 or earlier of the License, but not also under the terms of a Secondary License.

1.6. "Executable Form"

means any form of the work other than Source Code Form.

1.7. "Larger Work"

means a work that combines Covered Software with other material, in a separate file or files, that is not Covered Software.

1.8. "License"

means this document.

1.9. "Licensable"

means having the right to grant, to the maximum extent possible, whether at the time of the initial grant or subsequently, any and all of the rights conveyed by this License.

1.10. "Modifications"

means any of the following:

(a) any file in Source Code Form that results from an addition to, deletion from, or modification of the contents of Covered Software; or

(b) any new file in Source Code Form that contains any Covered Software.

1.11. "Patent Claims" of a Contributor

means any patent claim(s), including without limitation, method, process, and apparatus claims, in any patent Licensable by such Contributor that would be infringed, but for the grant of the License, by the making, using, selling, offering for sale, having made, import, or transfer of either its Contributions or its Contributor Version.

1.12. "Secondary License"

means either the GNU General Public License, Version 2.0, the GNU Lesser General Public License, Version 2.1, the GNU Affero General Public License, Version 3.0, or any later versions of those licenses.

1.13. "Source Code Form"

means the form of the work preferred for making modifications.

1.14. "You" (or "Your")

means an individual or a legal entity exercising rights under this License. For legal entities, "You" includes any entity that controls, is controlled by, or is under common control with You. For purposes of this definition, "control" means (a) the power, direct or indirect, to cause the direction or management of such entity, whether by contract or otherwise, or (b) ownership of more than fifty percent (50%) of the outstanding shares or beneficial ownership of such entity.

2. License Grants and Conditions

2.1. Grants

Each Contributor hereby grants You a world-wide, royalty-free, non-exclusive license:

- (a) under intellectual property rights (other than patent or trademark) Licensable by such Contributor to use, reproduce, make available, modify, display, perform, distribute, and otherwise exploit its Contributions, either on an unmodified basis, with Modifications, or as part of a Larger Work; and
- (b) under Patent Claims of such Contributor to make, use, sell, offer for sale, have made, import, and otherwise transfer either its Contributions or its Contributor Version.

2.2. Effective Date

The licenses granted in Section 2.1 with respect to any Contribution become effective for each Contribution on the date the Contributor first distributes such Contribution.

2.3. Limitations on Grant Scope

The licenses granted in this Section 2 are the only rights granted under this License. No additional rights or licenses will be implied from the distribution or licensing of Covered Software under this License.

Notwithstanding Section 2.1(b) above, no patent license is granted by a Contributor:

- (a) for any code that a Contributor has removed from Covered Software;
or
- (b) for infringements caused by: (i) Your and any other third party's modifications of Covered Software, or (ii) the combination of its Contributions with other software (except as part of its Contributor Version); or
- (c) under Patent Claims infringed by Covered Software in the absence of its Contributions.

This License does not grant any rights in the trademarks, service marks, or logos of any Contributor (except as may be necessary to comply with the notice requirements in Section 3.4).

2.4. Subsequent Licenses

No Contributor makes additional grants as a result of Your choice to distribute the Covered Software under a subsequent version of this License (see Section 10.2) or under the terms of a Secondary License (if permitted under the terms of Section 3.3).

2.5. Representation

Each Contributor represents that the Contributor believes its Contributions are its original creation(s) or it has sufficient rights to grant the rights to its Contributions conveyed by this License.

2.6. Fair Use

This License is not intended to limit any rights You have under applicable copyright doctrines of fair use, fair dealing, or other equivalents.

2.7. Conditions

Sections 3.1, 3.2, 3.3, and 3.4 are conditions of the licenses granted in Section 2.1.

3. Responsibilities

3.1. Distribution of Source Form

All distribution of Covered Software in Source Code Form, including any Modifications that You create or to which You contribute, must be under the terms of this License. You must inform recipients that the Source Code Form of the Covered Software is governed by the terms of this License, and how they can obtain a copy of this License. You may not attempt to alter or restrict the recipients' rights in the Source Code Form.

3.2. Distribution of Executable Form

If You distribute Covered Software in Executable Form then:

- (a) such Covered Software must also be made available in Source Code

Form, as described in Section 3.1, and You must inform recipients of the Executable Form how they can obtain a copy of such Source Code Form by reasonable means in a timely manner, at a charge no more than the cost of distribution to the recipient; and

- (b) You may distribute such Executable Form under the terms of this License, or sublicense it under different terms, provided that the license for the Executable Form does not attempt to limit or alter the recipients' rights in the Source Code Form under this License.

3.3. Distribution of a Larger Work

You may create and distribute a Larger Work under terms of Your choice, provided that You also comply with the requirements of this License for the Covered Software. If the Larger Work is a combination of Covered Software with a work governed by one or more Secondary Licenses, and the Covered Software is not Incompatible With Secondary Licenses, this License permits You to additionally distribute such Covered Software under the terms of such Secondary License(s), so that the recipient of the Larger Work may, at their option, further distribute the Covered Software under the terms of either this License or such Secondary License(s).

3.4. Notices

You may not remove or alter the substance of any license notices (including copyright notices, patent notices, disclaimers of warranty, or limitations of liability) contained within the Source Code Form of the Covered Software, except that You may alter any license notices to the extent required to remedy known factual inaccuracies.

3.5. Application of Additional Terms

You may choose to offer, and to charge a fee for, warranty, support, indemnity or liability obligations to one or more recipients of Covered Software. However, You may do so only on Your own behalf, and not on behalf of any Contributor. You must make it absolutely clear that any

such warranty, support, indemnity, or liability obligation is offered by You alone, and You hereby agree to indemnify every Contributor for any liability incurred by such Contributor as a result of warranty, support, indemnity or liability terms You offer. You may include additional disclaimers of warranty and limitations of liability specific to any jurisdiction.

4. Inability to Comply Due to Statute or Regulation

If it is impossible for You to comply with any of the terms of this License with respect to some or all of the Covered Software due to statute, judicial order, or regulation then You must: (a) comply with the terms of this License to the maximum extent possible; and (b) describe the limitations and the code they affect. Such description must be placed in a text file included with all distributions of the Covered Software under this License. Except to the extent prohibited by statute or regulation, such description must be sufficiently detailed for a recipient of ordinary skill to be able to understand it.

5. Termination

5.1. The rights granted under this License will terminate automatically if You fail to comply with any of its terms. However, if You become compliant, then the rights granted under this License from a particular Contributor are reinstated (a) provisionally, unless and until such Contributor explicitly and finally terminates Your grants, and (b) on an ongoing basis, if such Contributor fails to notify You of the non-compliance by some reasonable means prior to 60 days after You have come back into compliance. Moreover, Your grants from a particular Contributor are reinstated on an ongoing basis if such Contributor notifies You of the non-compliance by some reasonable means, this is the first time You have received notice of non-compliance with this License from such Contributor, and You become compliant prior to 30 days after Your receipt of the notice.

5.2. If You initiate litigation against any entity by asserting a patent infringement claim (excluding declaratory judgment actions, counter-claims, and cross-claims) alleging that a Contributor Version directly or indirectly infringes any patent, then the rights granted to You by any and all Contributors for the Covered Software under Section 2.1 of this License shall terminate.

5.3. In the event of termination under Sections 5.1 or 5.2 above, all end user license agreements (excluding distributors and resellers) which have been validly granted by You or Your distributors under this License prior to termination shall survive termination.

```
*                                     *
* 6. Disclaimer of Warranty           *
* -----                           *
*                                     *
* Covered Software is provided under this License on an "as is" *
* basis, without warranty of any kind, either expressed, implied, or *
* statutory, including, without limitation, warranties that the *
* Covered Software is free of defects, merchantable, fit for a *
* particular purpose or non-infringing. The entire risk as to the *
* quality and performance of the Covered Software is with You. *
* Should any Covered Software prove defective in any respect, You *
* (not any Contributor) assume the cost of any necessary servicing, *
* repair, or correction. This disclaimer of warranty constitutes an *
* essential part of this License. No use of any Covered Software is *
* authorized under this License except under this disclaimer. *
*                                     *
```

```
*                                     *
* 7. Limitation of Liability         *
* -----                           *
*                                     *
```

* *
* Under no circumstances and under no legal theory, whether tort *
* (including negligence), contract, or otherwise, shall any *
* Contributor, or anyone who distributes Covered Software as *
* permitted above, be liable to You for any direct, indirect, *
* special, incidental, or consequential damages of any character *
* including, without limitation, damages for lost profits, loss of *
* goodwill, work stoppage, computer failure or malfunction, or any *
* and all other commercial damages or losses, even if such party *
* shall have been informed of the possibility of such damages. This *
* limitation of liability shall not apply to liability for death or *
* personal injury resulting from such party's negligence to the *
* extent applicable law prohibits such limitation. Some *
* jurisdictions do not allow the exclusion or limitation of *
* incidental or consequential damages, so this exclusion and *
* limitation may not apply to You. *
* *

8. Litigation

Any litigation relating to this License may be brought only in the courts of a jurisdiction where the defendant maintains its principal place of business and such litigation shall be governed by laws of that jurisdiction, without reference to its conflict-of-law provisions. Nothing in this Section shall prevent a party's ability to bring cross-claims or counter-claims.

9. Miscellaneous

This License represents the complete agreement concerning the subject matter hereof. If any provision of this License is held to be unenforceable, such provision shall be reformed only to the extent necessary to make it enforceable. Any law or regulation which provides

that the language of a contract shall be construed against the drafter shall not be used to construe this License against a Contributor.

10. Versions of the License

10.1. New Versions

Mozilla Foundation is the license steward. Except as provided in Section 10.3, no one other than the license steward has the right to modify or publish new versions of this License. Each version will be given a distinguishing version number.

10.2. Effect of New Versions

You may distribute the Covered Software under the terms of the version of the License under which You originally received the Covered Software, or under the terms of any subsequent version published by the license steward.

10.3. Modified Versions

If you create software not governed by this License, and you want to create a new license for such software, you may create and use a modified version of this License if you rename the license and remove any references to the name of the license steward (except to note that such modified license differs from this License).

10.4. Distributing Source Code Form that is Incompatible With Secondary Licenses

If You choose to distribute Source Code Form that is Incompatible With Secondary Licenses under the terms of this version of the License, the notice described in Exhibit B of this License must be attached.

Exhibit A – Source Code Form License Notice

This Source Code Form is subject to the terms of the Mozilla Public License, v. 2.0. If a copy of the MPL was not distributed with this file, You can obtain one at <http://mozilla.org/MPL/2.0/>.

If it is not possible or desirable to put the notice in a particular file, then You may include the notice in a location (such as a LICENSE file in a relevant directory) where a recipient would be likely to look for such a notice.

You may add additional accurate notices of copyright ownership.

Exhibit B – “Incompatible With Secondary Licenses” Notice

This Source Code Form is “Incompatible With Secondary Licenses”, as defined by the Mozilla Public License, v. 2.0.

7.5 Copyright

Transfer, copying, disassembly, decompilation, and reverse engineering of the software contained in this product are prohibited. In addition, any act of export that violates the export laws and regulations of all software included in this product is prohibited.

7.6 Disclaimer

- The purpose of this product is to obtain images for monitoring specific areas. This product alone is not intended to prevent crimes.
- In no event shall we be liable for the following:
 - ① Any incidental, special or consequential damages or damages arising directly or indirectly in connection with the Goods
 - ② Any inconvenience, damage, or damage incurred due to the inability of an image to be displayed or recorded or the loss of recorded information due to any reason including a

failure or failure of the Product

- ③ Failure or inconvenience, damage, or damage caused by a system combined with a third party device
- ④ Claims or claims for damages caused by infringement of privacy by an individual or organization that has become the subject of a picture as a result of the use of surveillance images and records made public for some reason (including use with the User Authentication Off).
- ⑤ The stored information is lost for some reason (including when the Product is initialized due to forgetting the authentication information such as user name and password)