

WV-X67710-Z3-3

4K AI Rugged PTZ Camera (30x zoom)

4K AI Rugged PTZ Camera (30x zoom)



- 4K 30x Aero PTZ camera
 - Up to 3 Edge AI analytic apps
 - AI Auto tracking
 - AC24V/DC24V Power supply
 - Wind resistance (Up to 270km/h, 167mph)
 - Wide range of ambient temperatures supported (-50 °C to +65 °C {-58 °F to +149 °F})
 - IP66, IP68, IK10 certified
 - Built-in FIPS 140-2 Level 3 Certified SecureElement (EdgeLock® SE050F NXP® Semiconductors)
 - NDAA Compliant
-

SPECIFICATIONS

Camera	
Image Sensor	Approx. 1/2.8 type CMOS image sensor
Scanning Area	5.57 mm (H) × 3.13 mm (V) {7/32 inches (H) × 1/8 inches (V)}
Minimum Illumination	Color : 0.13lx (30IRE, F1.8, 1/30s, AGC:11) Color : 0.19 lx (50IRE, F1.8, 1/30s, AGC:11) BW : 0.10 lx (50IRE, F1.8, 1/30s, AGC:11)
White Balance	ATW1/ ATW2/ AWC
Shutter Speed	[30 fps mode] 1/30 Fix to 1/10000 Fix [25 fps mode] 1/25 Fix to 1/10000 Fix
Maximum Shutter	[30 fps mode] Max. 1/4000 s to Max. 16/30 s [25 fps mode] Max. 1/4000 s to Max. 16/25 s
Intelligent Auto	On/Off
Super Dynamic	On/Off (Range : 0 to 31)
Dynamic Range	Max. 132 dB (Super Dynamic: On, Level: 31)
Adaptive Black Stretch	The level can be set in the range of 0 to 255.
Back Light Compensation/High Light Compensation	BLC (Back light compensation) / HLC (High light compensation) / Off (Range : 0 to 31) *only when Super Dynamic/ Intelligent Auto: Off
Fog Compensation	On/Off (Range : 0 to 8) *only when Intelligent Auto / Auto contrast adjust: Off
Maximum Gain (AGC)	The level can be set in the range of 0 to 11.
Color/BW (ICR)	Off/ On/ Auto1/ Auto2/ Auto3(SCC)
IR LED Light	-
Digital Noise Reduction	The level can be set in the range of 0 to 255.
Video Motion Detection (VMD)	On/ Off 4 areas available
Scene Change Detection (SCD)	On/ Off 1 area available
Audio Detection	On/ Off
AI Sound Classification	Selectable from Gunshot, Yell, Vehicle horn, Glass break
Analytics	AI Video Motion Detection, AI Face Detection, AI Privacy Guard, AI People Detection, AI Vehicle Detection, AI Occupancy Detection For details: https://i-pro.com/products_and_solutions/en/surveillance/products/analytics-software 3rd party applications are also available. https://i-pro.com/products_and_solutions/en/surveillance/solutions/edge-ai-platform/application-list
Max. Number of Applications	3
Privacy Zone	On/Off Up to 32 zones available
VIQS	On/Off Up to 8 zones available
Image Stabilizer	On/Off (Built-in gyro sensor) Available only in the 30/25 fps mode
Camera Title (OSD)	On/Off Up to 40 characters, Up to 2 lines (alphanumeric characters, marks)

Lens	
Optical Zoom	30x
Extra Zoom	-
Digital (electronic) Zoom	30x - 480x
Focal Length	4.5 mm - 135 mm {3/16 inches - 5-5/16 inches}
Angular Field of View	[16:9 mode] Horizontal: 2.5° (TELE) - 62° (WIDE) Vertical: 1.4° (TELE) - 37° (WIDE)
Adjusting Angle	(PAN) angle : 360° turning (TILT) angle : -90° - +90° (YAW) angle : ±0°
Maximum Aperture Ratio	1:1.8 (WIDE) - 1:4.7 (TELE)
Focus Range	3.0 m {118-1/8 inches} - ∞
Aperture Range	F1.8 - Close

DORI	
Detect (25ppm / 8ppf)	3519.7 m {11547.6 ft} (TELE) 127.8 m {419.3 ft} (WIDE)
Observe (62.5ppm / 19ppf)	1407.9 m {4619.0 ft} (TELE) 51.1 m {167.7 ft} (WIDE)
Recognize (125ppm / 38ppf)	703.9 m {2309.5 ft} (TELE) 25.6 m {83.9 ft} (WIDE)
Identify (250ppm / 76ppf)	352.0 m {1154.8 ft} (TELE) 12.8 m {41.9 ft} (WIDE)

System on Chip	
System on Chip (SoC)	Ambarella CV22

Pan/Tilt	
Panning Range	360° Endless panning
Panning Speed	Manual : Approx. 0.065 °/s - 100 °/s * *Except when frozen Preset : Up to approx. 200 °/s * *Except when leaning forward, frozen, or in strong winds
Tilting Range	Operating range: - Upright: -45° to +90° (level - upward) - Leaning forward: -90° to +90° (downward - level - upward) - Hanging: -30° to +90° (level - downward)
Tilting Speed	Manual: Approx. 0.065 °/s - 100 °/s * *Except when frozen Preset: Up to approx. 200°/s *Except when leaning forward, frozen, or in strong winds
Preset Positions	256
Auto Mode	Auto track, Auto pan, Preset sequence, Patrol
Self Return	10 s, 20 s, 30 s, 1 min, 2 min, 3 min, 5 min, 10 min, 20 min, 30 min, 60 min

Browser GUI	
GUI / Setup Menu Language	English, Italian, French, German, Spanish, Portuguese, Russian, Chinese, Japanese
Browser *1	Microsoft Edge Firefox Google Chrome

Network	
Network IF	10BASE-T/100BASE-TX, RJ45 connector

Resolution	[16:9 mode(30 fps mode)][16:9 mode(25 fps mode)] 3840×2160/ 2560×1440/ 1920×1080/ 1280×720/ 640×360/ 320×180 [4:3 mode] -
H.265/H.264 Transmission Mode/Type	[Transmission Mode] Constant bit rate/ VBR/ Frame rate/ Best effort [Transmission Type] Unicast port (AUTO)/ Unicast port (MANUAL)/ Multicast
No. of Stream	4
JPEG (MJPEG) Image Quality	10 steps: 0(SUPER FINE) - 9(LOW)
Smart Coding	[GOP(Group of pictures) control] Off/ Low (Variable GOP 1s-8s)/Mid (Variable GOP 4s-16s)/ Advanced (Fixed GOP 60 seconds with 1 second Key frame)/ Frame rate control (Variable GOP 4s-16s with frame rate control) *Advanced and Frame rate control are only available with H.265. [Smart VIQS] On (High)/ On (Low)/ Off [Smart P-picture control] On/Off
Audio Compression Method *2	G.726 (ADPCM): 16 kbps/ 32 kbps G.711: 64 kbps AAC-LC: 64 kbps/ 96 kbps/ 128 kbps
Audio Transmission Mode	Off / Line input / Audio output / Interactive (Half duplex) / Interactive (Full duplex)
Supported Protocol	IPv6: TCP/IP, UDP/IP, HTTP, HTTPS, SSL/TLS, SMTP, DNS, NTP, SNMPv1/v2/v3, DHCPv6, RTP, MLD, ICMP, ARP, IEEE 802.1X, DiffServ, FTP, SFTP, LLDP, MQTT IPv4: TCP/IP, UDP/IP, HTTP, HTTPS, SSL/TLS, RTSP, RTP, RTP/RTCP, SMTP, DHCP, DNS, DDNS, NTP, SNMPv1/v2/v3, UPnP, IGMP, ICMP, ARP, IEEE 802.1X, DiffServ, SRTP, FTP, SFTP, LLDP, MQTT, NTCIP
No. of Simultaneous Users	Up to 14 users (Depends on network conditions)
Secure	FIPS 140-2 Level 3 (NXP® EdgeLock® SE050F), Device Certificate GlobalSign® pre-installed, HTTPS, User authentication, digest authentication, Host authentication, IEEE802.1X, System log, Image transmission log, brute-force protection, Alteration Detection
SDXC/SDHC/SD Memory Card (Option)	-
Mobile Terminal Compatibility	iPad / iPhone (iOS 8.0 or later), Android™ terminals
ONVIF®Profile	G / S / T / M

Input/Output

Audio Input *3	Pre-stripped wires
Audio Output *3	Output impedance: Approx. 600 Ω (unbalanced) Output level: -20 dBV
External I/O Terminals *3	ALARM IN1 (Alarm input 1/ Black & white input/ Auto time adjustment input) (x1) ALARM IN2 (Alarm input 2/ ALARM OUT) (x1) ALARM IN3 (Alarm input 3/ AUX OUT) (x1) Relay (x1)
Monitor Output	-

General

Safety	UL (UL62368-1), c-UL (CSA C22.2 No.62368-1), CE, IEC62368-1
EMC	FCC (Part15 ClassA), ICES-003 ClassA, EN55032 ClassA, EN55035
Power Source/Power Consumption	[Power Source] 24V AC 50Hz/60Hz 24V DC 90W PoE++ (IEEE802.3bt Type4 Class 8 compliant) 60W PoE++ (IEEE802.3bt Type3 Class 6 compliant) [Power Consumption] Ambient operating temperature -50 to 65°C: 24 V AC 50Hz/60Hz : 3.8 A / Approx. 61 W 24 V DC : 2.5 A / Approx. 60 W 90W PoE++ DC 54 V : 1.0 A / Approx. 54 W (Class 8 device) Ambient operating temperature -30 to 65°C: 60W PoE++ DC 54 V : 930 mA / Approx. 50.2 W (Class 6 device)

Ambient Operating Temperature	-50 °C to +65 °C {-58 °F to +149 °F} * (Power On range: -30 °C to +65 °C {-22°F to +149°F}) (24V AC/DC, PoE++ Class 8) -30 °C to +65 °C {-22 °F to +149°F} * (Power On range: -20 °C to +65 °C {-4 °F to +149°F}) (PoE++ Class 6)
Ambient Operating Humidity	10 % to 100 % (no condensation)
Water and Dust Resistance	IP68/IP66 (IEC 60529), Type 4X (UL50E), Type 6P(UL50E), NEMA 4X compliant, NEMA 6P compliant
Shock Resistance	IK10(IEC 62262) * * Excluding front glass
Wind Resistance	Upright, Hanging: Operable Up to 75 m/s {approx. 167 mph} Non-destructive Up to 90 m/s {approx. 201 mph} Leaning forward: Operable Up to 60 m/s {approx. 134 mph} Non-destructive Up to 90 m/s {approx. 201 mph}
Dimensions	226 mm (W) x 450 mm (H) x 266 mm (D) {8-29/32 inches (W) x 17-23/32 inches (H) x 10-15/32 inches (D)} (excluding the mounting and bump parts)
Mass (approx.)	Approx. 8.1 kg {17.9 lbs} (excluding attachments)
Finish	Body: High-strength salt-resistant resin, die-cast, Gray (Munsell N7 semi-gloss) Clear front cover: Clear glass
Easy Kitting	Yes
Other	Tamper-resistant enclosure*4 NEMA TS2 Compliant Maximum temperature according to NEMA TS 2 (2.2.7): 74 °C (165 °F) Heavy salt damage resistance specifications (ISO 14993 compliant)

NOTES

*1 For information on the operation verification of the web browsers, refer to our support website <Control No.: C0132>.

*2 When recording audio on an SD memory card, only use AAC-LC (Advanced Audio Coding - Low Complexity) .

*3 When using with them, WV-QCA502 cable is required.

*4 Component that has a structure on which the screws that are accessible after installation cannot be screwed or unscrewed using an ordinary screwdriver.

Important

– Safety Precautions : Carefully read the Basic Information, Installation Guide and Operating Instructions before using this product.
– i-PRO Co., Ltd. cannot be held responsible for the performance of the network and/or other manufacturers' products used on the network.

– Masses and dimensions are approximate.

– Specifications are subject to change without notice.

Trademarks and registered trademarks

– iPad and iPhone are trademarks of Apple Inc., registered in the U.S. and other countries. – Android is a trademark of Google LLC.

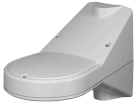
– ONVIF is a trademark of ONVIF, Inc.

– All other trademarks identified herein are the property of their respective owners

OPTIONAL ACCESSORIES

Select a compatible accessory

[Accessory Selector \(i-pro.com\)](http://i-pro.com).



WV-QWL503S-G
Mount Bracket



WV-QWL503-G
Mount Bracket



WV-QCN500S-G
Mount Bracket



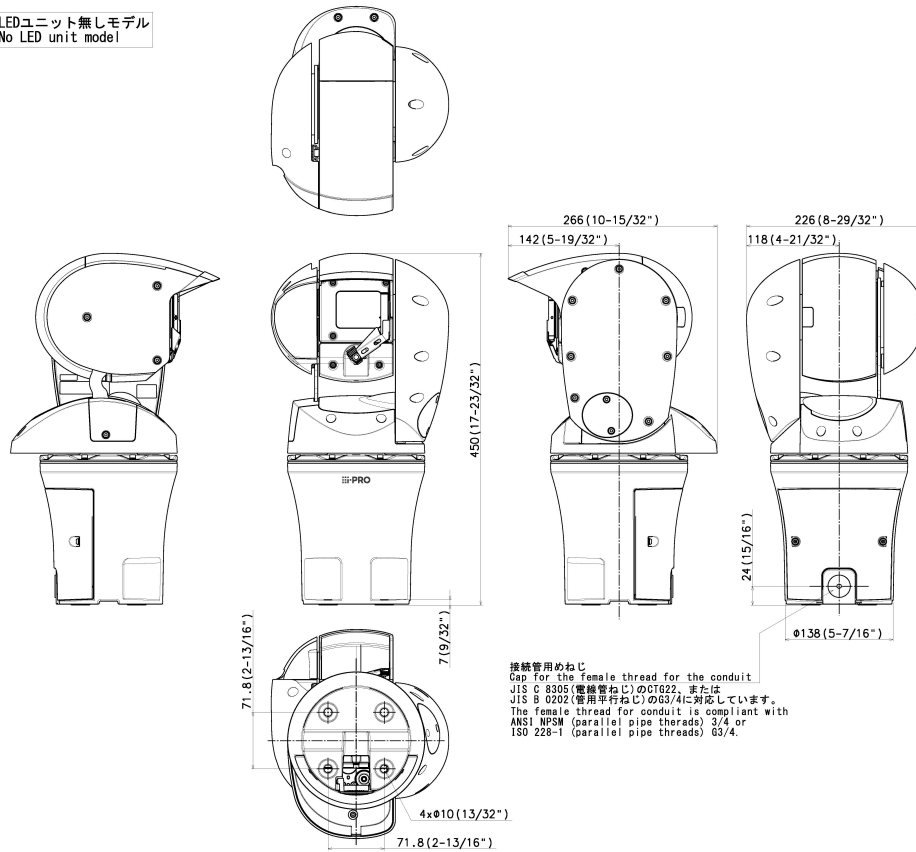
WV-Q189
Mount Bracket



WV-QCA502
I/O Cable for Aero PTZ
camera

APPEARANCE

LEDユニット無しモデル
No LED unit model



	投影面積/Projected area (直立/Upright)
平面図/Top-view	0.074 (m ²)
側面図/Side-view	0.072 (m ²)

Mass : Approx. 8.1 kg [17.88 lbs]

Unit:mm