



# Web Guide

WV-X25580-F2LN2

---

---

# Contents

<b>1.</b>	<b>Set up .....</b>	<b>1</b>
	1.1 Recommended Procedures for Installing this product .....	1
<b>2.</b>	<b>Connect to the camera .....</b>	<b>2</b>
	2.1 i-PRO Configuration Tool (iCT) .....	2
	2.2 IP Setting Software .....	2
	2.3 Access the camera .....	2
	2.4 About Live image pages .....	4
<b>3.</b>	<b>Set the camera .....</b>	<b>6</b>
	3.1 Check whether the object is of the proper size. ....	6
	3.2 Adjust the image quality .....	6
	3.2.1 Set the light intensity control mode depending on the installation location and installation area. ....	6
	3.2.2 Set white balance depending on the lighting environment you install. ....	7
	3.2.3 Sets night time black-and-white switching mode .....	8
	3.3 Recording setting (SD Memory Card) .....	9
	3.3.1 Install the SD Memory Card .....	9
	3.3.2 Record using SD Memory Card .....	9
	3.3.3 Play back images stored on the SD Memory Card .....	9
	3.4 Adjust the zoom .....	10
	3.5 Hide some of the images .....	10
	3.6 Identify sounds with AI .....	11
	3.7 Record sound .....	11
	3.8 Set up events .....	12
	3.8.1 Detect object movements .....	12
	3.8.2 Casing open detection .....	13
	3.8.3 Impact detection .....	13
	3.9 Enhance communication security .....	13
	3.10 Detect data falsification .....	14

---

---

3.11	Set the Image capture size and frame rates .....	14
3.12	Set the overlay image function .....	14
3.13	Set the image stream .....	15
3.13.1	About the Setting of Stream .....	15
3.13.2	About delivery volume control (bit rate) .....	15
3.13.3	Reducing Data Capacity with Smart Coding .....	16
<b>4.</b>	<b>Clean up .....</b>	<b>17</b>
<hr/>		
4.1	Cleaning of lenses .....	17
4.2	Cleaning of Dome covers .....	17
<b>5.</b>	<b>Specifications .....</b>	<b>18</b>
<hr/>		
5.1	PC environment required .....	18
5.2	About Image capture mode and Image capture size .....	19
5.2.1	Image capture size .....	19
5.2.2	Restrictions .....	20
5.3	DORI .....	20
5.4	Streaming performance .....	21
5.5	About Available Extension software .....	21
5.6	Lamp .....	22
5.6.1	Lighting of the lamp .....	22
5.7	Button .....	24
5.8	Cable .....	25
<b>6.</b>	<b>Others .....</b>	<b>26</b>
<hr/>		
6.1	Initialize .....	26
6.2	Check the software version .....	26
6.3	Upgrade software .....	27
6.4	Order of setting when adjusting image quality .....	27
6.5	Adjusting object brightness (bright scenes) .....	28
6.5.1	Adjusting brightness .....	28
6.6	Adjusting object brightness (dark scenes) .....	29
6.6.1	Adjust the maximum gain .....	29
6.6.2	Adjust the maximum shutter .....	29
6.7	Reducing white flickering and blacking on the screen .....	30

---

6.7.1	Set Super Dynamic	30
6.7.2	Set the backlight compensation	30
6.7.3	Set the high light compensation	31
6.7.4	Adjust the adaptive black stretch	32
6.7.5	Adjust the [Pedestal level]	32
6.8	Adjust the object contrast	33
6.8.1	Adjust the contrast	33
6.9	Reduce flicker	33
6.10	Reducing the blur of object (bright scenes)	33
6.10.1	Set intelligent auto (motion priority level)	33
6.10.2	Adjust the maximum shutter	34
6.11	Reducing object blur (dark scenes)	35
6.11.1	Adjust digital noise reduction	35
6.12	Sharpen the outline of the subject	36
6.12.1	Adjust the sharpness level	36
6.13	Adjust the color	36
6.13.1	Adjust color density	36
6.13.2	Adjust the white balance	37
6.14	Reducing object noise (bright scenes)	37
6.14.1	Adjust the sharpness level	37
6.15	Reducing object noise (dark scenes)	38
6.15.1	Adjust digital noise reduction	38
6.16	Troubleshooting	38
6.17	Precautions pertaining to usage	40
6.18	Disclaimer	42
6.19	NETWORK RELATIONSHIP	43

1. Set up
  - 1.1 Recommended Procedures for Installing this product
- 

# 1. Set up



For detailed instructions on installation, refer to the following.

[Installation](#)

## 1.1 Recommended Procedures for Installing this product

The URL of the movie is as follows.

[https://www.youtube.com/playlist?list=PLTQfvT0fJHvDPOqZw\\_D0k1KccLwzXt-7S](https://www.youtube.com/playlist?list=PLTQfvT0fJHvDPOqZw_D0k1KccLwzXt-7S)

2. Connect to the camera
  - 2.3 Access the camera
- 

## 2. Connect to the camera

### 2.1 i-PRO Configuration Tool (iCT)

This is a tool for managing the image monitoring system at a glance.



For more information about i-PRO Configuration Tool (iCT), see the following.

→[Click here for more information about i-PRO Configuration Tool](#)

### 2.2 IP Setting Software

Cameras or recorders on the same network can be automatically detected and set up in the network.



Refer to the following for details on the IP Setting Software.

→[Click here for more information on the IP Setting Software](#)

### 2.3 Access the camera

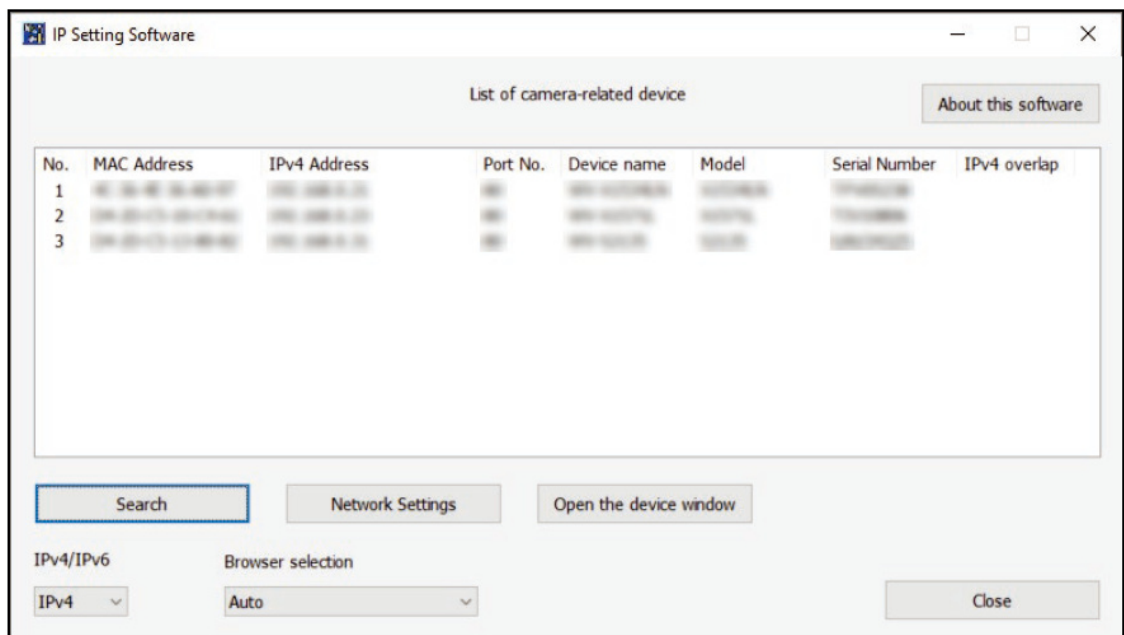
1. Launch a IP Setting Software
  - The model number and MAC address of the detected camera are displayed.
  - The default for [Network Settings] is [DHCP].

2. Connect to the camera
  - 2.3 Access the camera
- 



- If you cannot obtain an IP address from the DHCP server, set the IP address to 192.168.0.10.

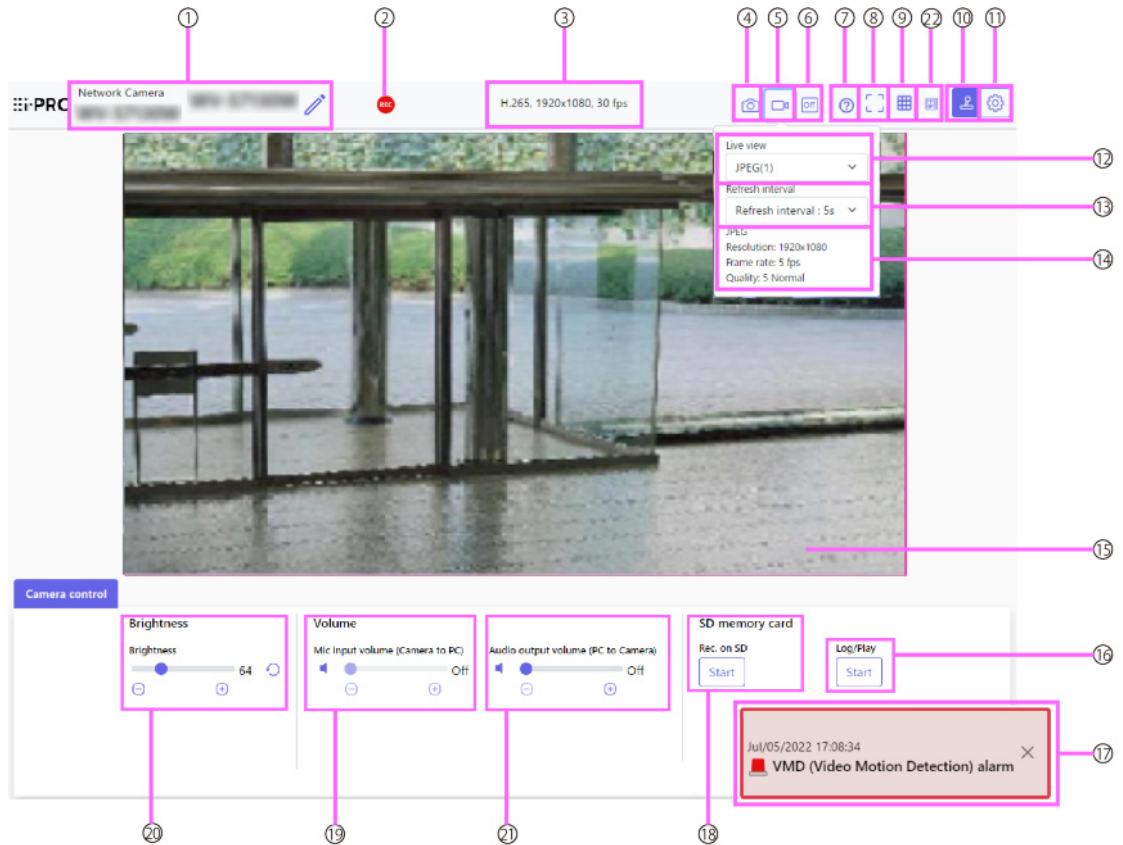
2. Double-click on the camera's IP address
  - The browser starts and the administrator registration screen is displayed.
  - You need to register as an administrator.



3. Enter administrator username and password
  - The screen for setting the language and date and time is displayed.
4. Set the language, date and time, and screen
  - You can set the language and date and time and change the background color of the screen and the layout of the operation panel.
5. Press [Set]
  - Live image pages is displayed.

- 2. Connect to the camera
- 2.4 About Live image pages

## 2.4 About Live image pages



- ① Camera title
- ② SD Storage Status Display
- ③ Stream information display
- ④ Snapshot button
- ⑤ Stream selection display button
- ⑥ Before/after image comparison switching button
- ⑦ Support button
- ⑧ Full Screen View button
- ⑨ Grid view button
- ⑩ Camera control panel display button
- ⑪ [Setup] buttons (Settings panel display button)
- ⑫ Select Streams-[Live only] pull-down menu
- ⑬ Select Streams-[Refresh Rate] pull-down menu
- ⑭ Select Stream-Display Stream Information
- ⑮ Main area



## 2. Connect to the camera

### 2.4 About Live image pages

---

- ⑩ Camera Control Panel-SD Memory Card-[Log/Play]
- ⑪ Alarm notification
- ⑫ Camera Control Panel-SD Memory Card-[Rec. on SD]
- ⑬ Camera Control Panel-[Mic input volume (Camera to PC)]
- ⑭ Camera Control Panel-[Brightness]
- ⑮ Camera control panel - [Audio output volume (PC to Camera)]
- ⑯ Frame rate/bit rate display button

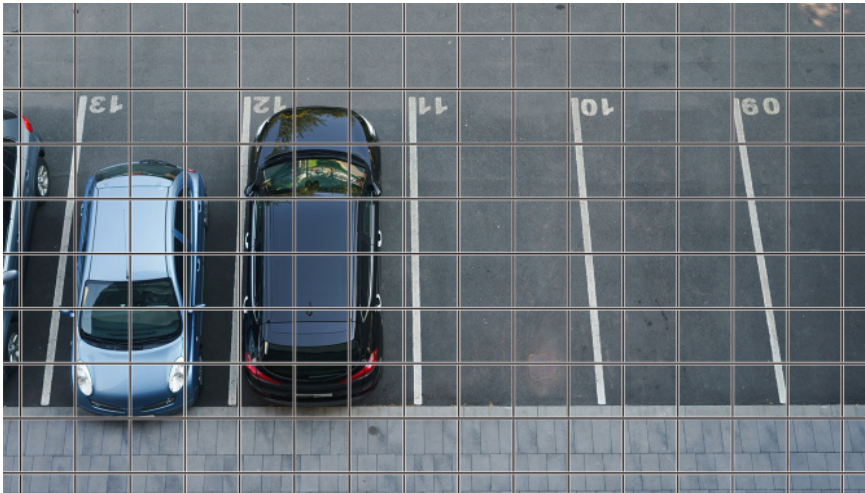
- 3. Set the camera
  - 3.2 Adjust the image quality
- 

## 3. Set the camera

### 3.1 Check whether the object is of the proper size.

When using our Extension software, you can check the number of grids to see if it is the right size to recognize object.

→[For more information about the recommended sizes of Extension software](#)



### 3.2 Adjust the image quality

This section explains how to adjust the image quality when installing the camera.

#### 3.2.1 Set the light intensity control mode depending on the installation location and installation area.

Use [Light control mode] to set the light intensity appropriate for the installation location and area.

- Live image pages configuration panels>Clicking the [Image quality] tabs enables you to set the image quality.

3. Set the camera  
3.2 Adjust the image quality

---

1. Select [Light control mode]
  - To install outdoors: Set [ELC].
  - For indoor installation: Set [Indoor scene(50Hz)] or [Indoor scene(60Hz)].  
50 Hz/60 Hz can be used differently depending on the region.

### 3.2.2 Set white balance depending on the lighting environment you install.

Use [White balance] to set the white balances appropriate for the installation location and area.

- Live image pages configuration panels>[Detailed setting]>[Camera detailed setting]>[Image] or [Image/Audio] of the Advanced menus on the left>[Image adjust] in the [Image quality] tabs>When [Setup] is clicked, the image quality adjustment setting window is displayed.

1. Select [White balance]
  - Select from [ATW1], [ATW2], and [AWC].

#### [ATW1]

Set the automatic color temperature tracking mode. The camera continuously checks the color temperature of the light source and automatically adjusts the white balance.

The operating range is about 2700 K to 6000 K.

#### [ATW2]

Set the automatic color temperature tracking mode. The camera automatically adjusts the white balance under a sodium lamp.

The operating range is from about 2000 K to 6000 K.

#### [AWC]

Set the automatic white balance control mode. Since the light source is fixed, it is suitable for shooting in a place where the lighting environment does not change.

The operating range is from approximately 2000 K to 10000 K.



Colors may not be reproducible faithfully if the following conditions are met: In such cases, set it to [AWC].

- Largely dark object
- Clear blue sky or the sun at dusk
- Object with too low illumination

- 3. Set the camera
  - 3.2 Adjust the image quality
- 

### 3.2.3 Sets night time black-and-white switching mode

You can switch to color or black-and-white images by using [Day & Night(IR)] when shooting at night.

- Live image pages configuration panels>Clicking the [Image quality] tabs enables you to set the image quality.
- 1. Select [Day & Night(IR)]
  - Select [Off], [On(IR Light Off)], [On(IR Light On)], [Auto1(IR Light Off)], [Auto2(IR Light On)], and [Auto3(SCC)].

#### [Off]

This function is used for shooting colored images at night as well.

#### [On(IR Light Off)]

The picture is always taken in black and white.

#### [On(IR Light On)]

The picture is always taken in black and white. This setting is used when near-infrared lighting is used at night.

#### [Auto1(IR Light Off)]

The color image and black-and-white image are automatically switched depending on the brightness (illumination) of the image.

#### [Auto2(IR Light On)]

The color image and black-and-white image are automatically switched depending on the brightness (illumination) of the image. This is set when the near-infrared illumination is used at night.

#### [Auto3(SCC)]

Set this when you want to maintain a color image even when the light source is dark. The Super Chroma Compensation (SCC) function maintains the color image to low illumination.

## 3.3 Recording setting (SD Memory Card)

### 3.3.1 Install the SD Memory Card

1. Remove the enclosure
2. Insert a microSD memory card into the slot



Use the SD Memory Card formatted on this product.



To remove the SD Memory Card, [Basic] the Advanced menu.>On the [SD memory card] tab, select [SD memory card] as [Not use]. Remove the SD Memory Card from this product.

### 3.3.2 Record using SD Memory Card

This section describes the procedures for turning [Save trigger] to [Manual].

- Live image pages configuration panels>[Detailed setting]>[Camera detailed setting]> [Basic] of the Advanced menus on the left>When [SD memory card] tab is clicked, the SD Memory Card setup page is displayed.
  - (1) Select [Recording format] streams
  - (2) Select [Save trigger] and click [Set].
  - (3) Click [Live] in the upper left corner and click the camera control panel display button.
    - The camera control panel is displayed.
  - (4) Clicking [Start] on [Rec. on SD]
    - Start recording to the SD Memory Card manually.
    - You can stop recording by clicking [Stop]. After stopping, you can resume recording by clicking [Start].

### 3.3.3 Play back images stored on the SD Memory Card

You can play back images stored on the SD Memory Card.

3. Set the camera  
3.5 Hide some of the images

---

- Live image pages cameras control panels>Clicking [Log/Play] displays the log list.
- 1. View Live image pages and click the camera control panel display button.
- 2. Press the [Start] on [Log/Play] button
  - The Log List screen is displayed in a separate window.
- 3. Press the shooting date and time displayed below [Time & date]
  - The playback page is displayed and the saved image is played.

## 3.4 Adjust the zoom

Adjust the zoom of the displayed image manually.

- Live image pages configuration panels>Clicking on the [Zoom] tabs displays the settings window.
- 1. Adjust the [Extra optical zoom]

## 3.5 Hide some of the images

If you set the area to be hidden, you can move the camera's field angle while holding the area to be hidden.

- Live image pages configuration panels>[Detailed setting]>[Camera detailed setting]>[Image/Audio] of the Advanced menus on the left>[Privacy zone] in the [Image quality] tabs>When [Setup] is clicked, the Privacy Zone setting window is displayed.



- (1) Drag the desired area with the mouse and press [Set] button.
  - Privacy zones are set in order from Area 1.
- (2) Select [Status] to view privacy zones
  - Set up the privacy zone in [On]/[Off].

## 3.6 Identify sounds with AI

Image monitoring can be enhanced by identifying and detecting human cries, broken glass sounds, horns, guns, and other sounds.

- Live image pages configuration panels>[Detail setting]>[Camera detailed setting]>[Alarm] of the Advanced menus on the left>Clicking on the [Audio detection] tabs displays the configuration pages.



AI Sound Classification See below for more information.

→[WHITE PAPER](#)

1. Set [Audio detection] to [On] to set sound detection.
2. Select Sensitivity of Detection with [Detection sensitivity].
3. Select the sound to be detected by [AI analytics target].
  - Selection of [Other] is not recommended in conjunction with other sounds detected. For example, when a gun sound is detected with the settings for detecting two sounds: [Gunshot] and [Other], it is detected as two sounds.



For validated external microphones, see below.

→[Verification result of external microphones](#)

## 3.7 Record sound

Audio data can be recorded to SD recording when alarm is detected.

1. Select whether to record audio data in the SD Memory Card setup page.
  - [On] saves audio data in a movie (MP4 format).
  - [Off]: Audio data is not saved in movies (MP4 format).

## 3.8 Set up events

You can set the alarm to detect the operation of an area or interference to the camera, or the operation when the alarm is detected.

- Live image pages configuration panels>[Detailed setting]>[Camera detailed setting]>[Easy Setup] of the Advanced menus on the left>Clicking on the [Event action] tabs displays the configuration pages.



- Refer to the User Manual for instructions on configuring events.
- Refer to the User Manual for instructions on how to configure Internet disclosure.

### 3.8.1 Detect object movements

When an alarm is activated, the camera operates as set. There are patterns for the alarms when the specified area moves and when the camera is blocked.

- Live image pages configuration panels>[Detailed setting]>[Camera detailed setting]>[Alarm] of the Advanced menus on the left>Clicking on the [VMD area] tabs displays the configuration pages.



Refer to the user manual for details of all alarms.

#### 3.8.1.1 Set the area for detecting the movement of an object

Set the area for detecting the movement of an object using the motion detection function using video images.





1. Drag through the image to set the area.
  - You can set the areas in order.
2. Adjust the [Detection area] and [Detection sensitivity] using the slider bar and then press [Set].

### 3.8.2 Casing open detection

When the this product casing is opened and an alarm is generated, the camera operates as set.

- Live image pages configuration panels>[Detail setting]>[Camera detailed setting]>[Alarm] of the Advanced menus on the left>Click the [Casing open detection] tab to display the setting page.



Refer to the user manual for details of all alarms.

### 3.8.3 Impact detection

When the this product casing is impacted and an alarm is generated, the camera operates as set.

- Live image pages configuration panels>[Detail setting]>[Camera detailed setting]>[Alarm] of the Advanced menus on the left>Click the [Impact detection] tab to display the setting page.



Refer to the user manual for details of all alarms.

## 3.9 Enhance communication security

Setting up HTTPS encrypts camera access and enhances communication security.

- Refer to the following support videos for the HTTPS setting method (pre-installation).  
→[Support video](#)
- For information about how to configure HTTPS (CA certificate), refer to the following supported videos.

- 3. Set the camera
  - 3.12 Set the overlay image function
- 

→[Support video](#)

## 3.10 Detect data falsification

If you set Falsification Detection, you can detect the falsified data on the SD Memory Card using the dedicated software.

Refer to the following support videos for how to set up tampering detection.

→[Support video](#)

## 3.11 Set the Image capture size and frame rates

- Live image pages configuration panels>[Stream] tabs>Set in [Image capture mode] of [Common].



- Refer to the User Manual for details on settings and frame rates.
- For more information about Image capture size, see the following.  
→[About Image capture mode and Image capture size](#)

## 3.12 Set the overlay image function

You can specify the position to overlay the uploaded image or specify the color to be transmitted. In the model where the SD Memory Card can be recorded, the overlay displayed images are recorded during recording.

Refer to the User Manual for details on how to configure the settings.

- Live image pages configuration panels>[Detail setting]>[Camera detailed setting]>[Basic] of the Advanced menus on the left>Configure in the [Overlay image] tabs.
  1. Select an image with [Overlay] set to [On].
  2. Set [Position], [Permeation], and [Selection of color to be penetrated]
  3. Press [Set]

## 3.13 Set the image stream

### 3.13.1 About the Setting of Stream

You can configure whether to deliver streams, whether to compress streams with H.265 or H.264, Image capture size, image quality, and how to deliver streams.

- Live image pages configuration panels>Use the [Stream] tabs. The streams of H.265 and H.264 images are set in [Stream] on the [Stream] tabs.
  - For the image compression method, refer to the following.
    - [Reducing Data Capacity with Smart Coding](#)
  - Refer to the following for how to distribute.
    - [About delivery volume control \(bit rate\)](#)
  - Refer to the User Manual for details of each setting method.

### 3.13.2 About delivery volume control (bit rate)

The following types of delivery modes are used to control the amount of delivery (bit rate) of the stream, and settings are made accordingly. You can also use smart coding, such as [Smart VIQS], to reduce the amount of data. For information about controlling the amount of stream delivery, see the following. Refer to the User Manual for details.

→[Reducing Data Capacity with Smart Coding](#)

- **Fixed bit rate:**

The H.265 (or H.264) images are delivered at the bit rate set by [Max bit rate (per client) \*].

- **Variable bit rate:**

The H.265 (or H.264) images are delivered at the frame rate set by [Frame rate\*] while maintaining the image quality level set by [Image quality]. At this time, the bit rate is varied within the maximum bit rate set by [Max bit rate (per client) \*]. The recording capacity varies depending on the [Image quality] settings and the object status.

- **Specify Frame Rate:**

H.265 (or H.264) images are delivered at the frame rate set by [Frame rate\*].

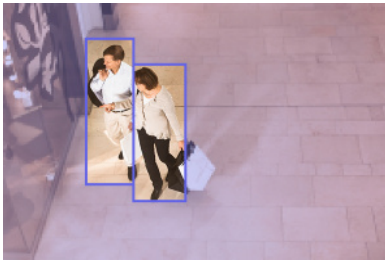
- **Best effort delivery:**

Depending on the bandwidth of the networks, H.265 (or H.264) images are delivered with varying bit rates within the maximum bit rate set by [Max bit rate (per client) \*].

### 3.13.3 Reducing Data Capacity with Smart Coding

Smart coding is a data-compression technique that optimizes the compression ratio by reducing compression and high compression in the background to clearly show the human face, and by object.

- Live image pages configuration panels>[Detail setting]>[Camera detailed setting]>[Image] or [Image/Audio] of the Advanced menus on the left>Clicking [Image] displays the Smart Coding configuration.



This image is an image. This is different from the actual view of the screen.

#### [Smart VIQS]

The image quality of the area where the object (head, people, automobiles, and motorcycles) is displayed is maintained at a high level. Images other than objects are delivered in such a way that low or medium image quality is maintained and the amount of data is reduced.

#### [Smart P-picture control]

In order to reduce the amount of data, data generation (macroblock) is reduced in areas other than where objects (head, people, automobiles, and motorcycles) are displayed.

#### [GOP control]

You can reduce the amount of data.

## 4. Clean up



- Turn off the power before starting operation. Doing so may result in injury.
- Do not apply or use organic solvents such as benzene and thinner. The enclosure may become discolored. Follow the precautionary statement when using chemical foil.
- Do not loosen or remove the screws not specified in the operation manual.

### 4.1 Cleaning of lenses



- Clean with lens cleaning paper (for cleaning cameras and eyeglasses).
- Alcohols should be used when solvents are used. Do not use glass cleaners or thinners.

### 4.2 Cleaning of Dome covers



- To clean the Dome cover, wash out hard sand grains and other adhered materials by pouring fresh water containing no lubricant or silicone substance using a hose or spray. If the stain is not removed, wipe with a soft sponge soaked with the above fresh water.
- Do not wipe dry (e.g., spread oil on the surface or damage the ClearSight Coating).
- Use neutral detergent for dishware and rinse thoroughly after use if dirt does not come off after wiping. If detergents other than neutral (weakly alkaline or slightly acidic) are used, the hydrophilic capacity of the product may deteriorate or the surface coating may peel off.
- Do not use organic solvents such as benzene and thinner.
- If spraying is used, use it after emptying to remove the initial impurities.

## 5. Specifications

### 5.1 PC environment required

CPU:	Intel® Core™ Processor family <When using an image capture size of 1920 x 1080 or lower> -Intel® Core™ i5-6500 or more -Intel® Core™ i7-6700 or higher recommended <When using an image capture size higher than 1920 x 1080> -Intel® Core™ i7-11700 or higher recommended
Memory:	<When using an image capture size of 1920 x 1080 or lower> Recommended at least 4 GB (2 GB x 2, dual channel) <When using an image capture size higher than 1920 x 1080> Recommended at least 16 GB (8 GB x 2, dual channel)
Network function:	10BASE-T/100BASE-TX/1000BASE-T 1 port
Sound function:	Sound Card (for voice function)
Image display function:	Image capture size: 1920 x 1080 pixels or more <When using an image capture size of 3840 x 2160> High Image capture size monitoring: 3840 x 2160 pixels or more Color: 24 bits or more of True Color
Compatible OS:	Microsoft Windows 11 Microsoft Windows 10
Web browser:	Google Chrome™ Firefox Microsoft Edge (after Chromium)
Other:	Adobe® Reader® or Acrobat Reader® (For viewing PDF files)

## 5.2 About Image capture mode and Image capture size



- The bit rate of streams is restricted to [Bandwidth control(bit rate)] on the [Network] tabs of network pages.
- If the refresh interval is short, the bit rate may be exceeded depending on the object.
- Depending on the number of concurrent users or the combination of functions used, the bit rate may be lower than the set value. Confirm the image delivered after setting.

### 5.2.1 Image capture size

It's Image capture size. The initial value is underlined.

Image capture mode	Stream(1)	Stream(2)	Stream(3)	Stream(4)	JPEG(1)*1	JPEG(2)
16:9(30fps)	3072x1728	3072x1728			3072x1728	
16:9(25fps)	2560x1440	2560x1440*2			2560x1440	
		1920x1080			1920x1080	
		1280x720	1280x720	1280x720	1280x720	1280x720
		640x360	640x360	640x360	640x360	640x360
		320x180	320x180	320x180	320x180	
	Max 30(25) fps*3*4	Max 30(25) fps*3*4	Max 30(25) fps*3*4	Max 30(25) fps*3*4	Max 5(4.2) fps*5*6	Max 15(12.5) fps*6
4:3(30fps)	3072x2304	3072x2304			3072x2304	
4:3(25fps)	2560x1920	2560x1920*2			2560x1920	
		1280x960			1280x960	
		800x600			800x600	
		640x480	640x480	640x480	640x480	640x480
		400x300			400x300	
		320x240	320x240	320x240	320x240	
	Max 30(25) fps*3	Max 30(25) fps*3	Max 30(25) fps*3	Max 30(25) fps*3	Max 5(4.2) fps*5*6	Max 15(12.5) fps*6

\*1 Only the same image capture sizes set for "Stream(1)", "Stream(2)", "Stream(3)", "Stream(4)" and "JPEG(2)" are selectable.

- \*2 “2560 x 1440 (2560 x 1920)” of “stream(2)” can be selected in case of “stream(1)” is set to “2560 x 1440 (2560 x 1920)”.
- \*3 When “3072 x 1728 (3072 x 2304)” or “2560 x 1440 (2560 x 1920)” is selected for “Stream(2)”, the frame rate will be limited to max. “15 fps (12.5fps)”.
- \*4 When “1280 x 720” is selected for “Stream(4)”, the frame rate will be limited to max. “15 fps (12.5fps)”.
- \*5 When the image capture size is “3072 x 1728 (3072 x 2304)”, the refresh interval is limited to 1 fps max. and when the image capture size is “2560 x 1440 (2560 x 1920)”, the refresh interval is limited to 2 fps max. (2.1 fps)
- \*6 When [Off] is selected for [Stream transmission], the maximum frame rate is 30 fps (25 fps)

### 5.2.2 Restrictions

Image capture mode	Extension software	Stabilizer	SD recording	Smart coding	Super Dynamic	Intelligent auto	Privacy zone	Auto tracking
16:9(30/25fps)	Yes	–	Yes	Yes	Yes*1	Yes	Yes	–
4:3(30/25fps)	Yes	–	Yes	Yes	Yes*1	Yes	Yes	–

\*1 When [Super Dynamic level] is set to 30 or more, the frame rate will be limited to max. “15 fps (12.5 fps)”

## 5.3 DORI

Detect (25 ppm/8 ppf)	23.3 m {76.6 ft}
Observe (62.5 ppm/19 ppf)	9.3 m {30.6 ft}
Recognize (125 ppm/38 ppf)	4.7 m {15.3 ft}
Identify (250 ppm/76 ppf)	2.3 m {7.7 ft}



## 5.4 Streaming performance

- Up to 14 users are accessible at the same time.
- The maximum bandwidth is 50 Mbps.

## 5.5 About Available Extension software

Maximum number of apps	ROM capacity	RAM capacity
3	150 MB	250 MB

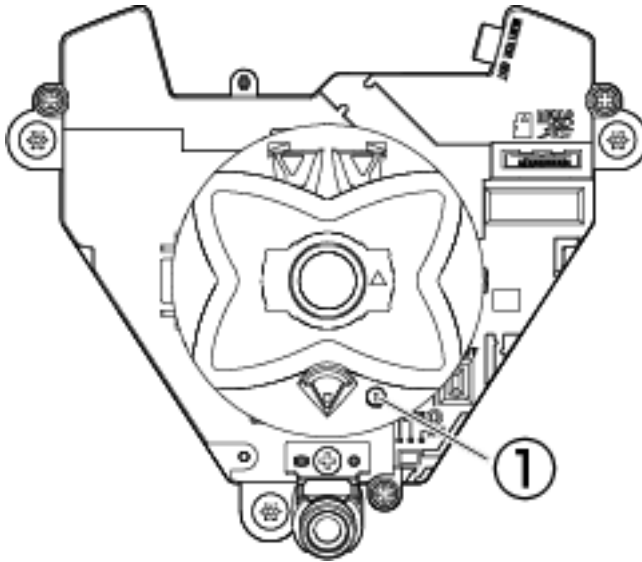


For the latest software (AI application) support status and restrictions, please check the technical information (C0103) on our website.

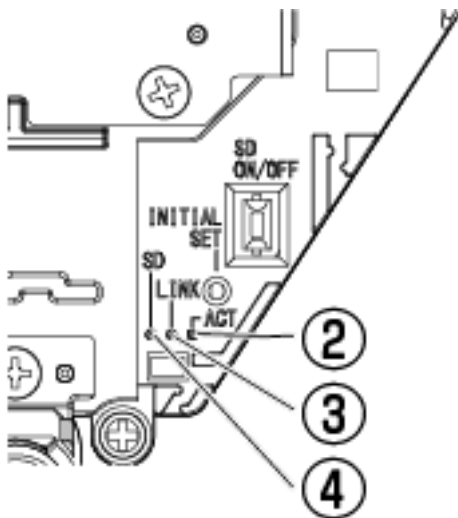
→ [Technical information website](#)

Software (AI apps)	Pre-install	Support status
AI-VMD	Yes	Supported
AI Privacy Guard	Yes	Supported
AI Face Detection	No	Supported
AI People Detection	Yes	Supported
AI Vehicle Detection	No	Supported
AI Non-Mask Detection	No	Supported
AI Occupancy Detection	No	Supported
AI Scene Change Detection	No	Supported
AI On-site Learning	No	Not supported
AI Processing Relay	No	Not supported
Application Release License	Yes	Supported

## 5.6 Lamp



① [FUNCTION] indicator



- ② [ACT] indicator
- ③ [LINK] indicator
- ④ [SD] (MOUNT) indicator

### 5.6.1 Lighting of the lamp

#### [FUNCTION] indicator

- When [REC notification] is set

- Lights red
  - ※Conditions for REC notification: During SD recording or video monitoring
- When [Impact detection notification] is set
  - Blinks red
    - ※Condition for Impact detection notification: When the this product casing is impacted
- When [Casing open detection notification] is set
  - Blinks red
    - ※Condition for Casing open detection notification: When the this product casing is opened

#### [LINK] indicator

When the camera is able to communicate with the connected device

- Lights orange

#### [ACT] indicator

When data is being sent via the network camera

- Blinks green (accessed)

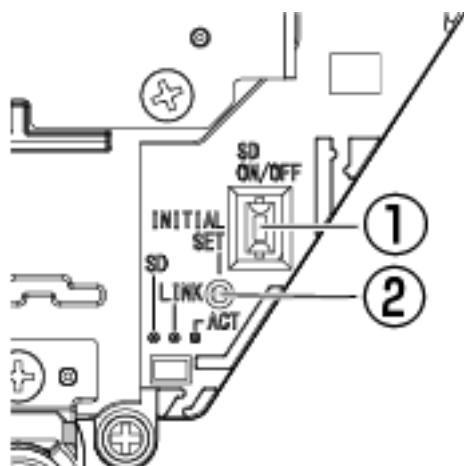
#### [SD] (MOUNT) indicator

- When a microSD memory card is inserted and could be recognized
  - Lights off → Blinks green → Lights green
- When data can be saved after the microSD memory card is inserted and the SD ON/OFF button is pressed (less than 1 second)
  - Lights off → Lights green
- When data can be saved to the microSD memory card
  - Lights green
- When the microSD memory card is removed after holding down the SD ON/OFF button (about 2 seconds)
  - Lights green → Blinks green → Lights off (recording)
  - Lights green → Lights off (waiting for recording)
- When data cannot be saved to the microSD memory card because an abnormality was detected or the microSD memory card is configured not to be used
  - Lights off



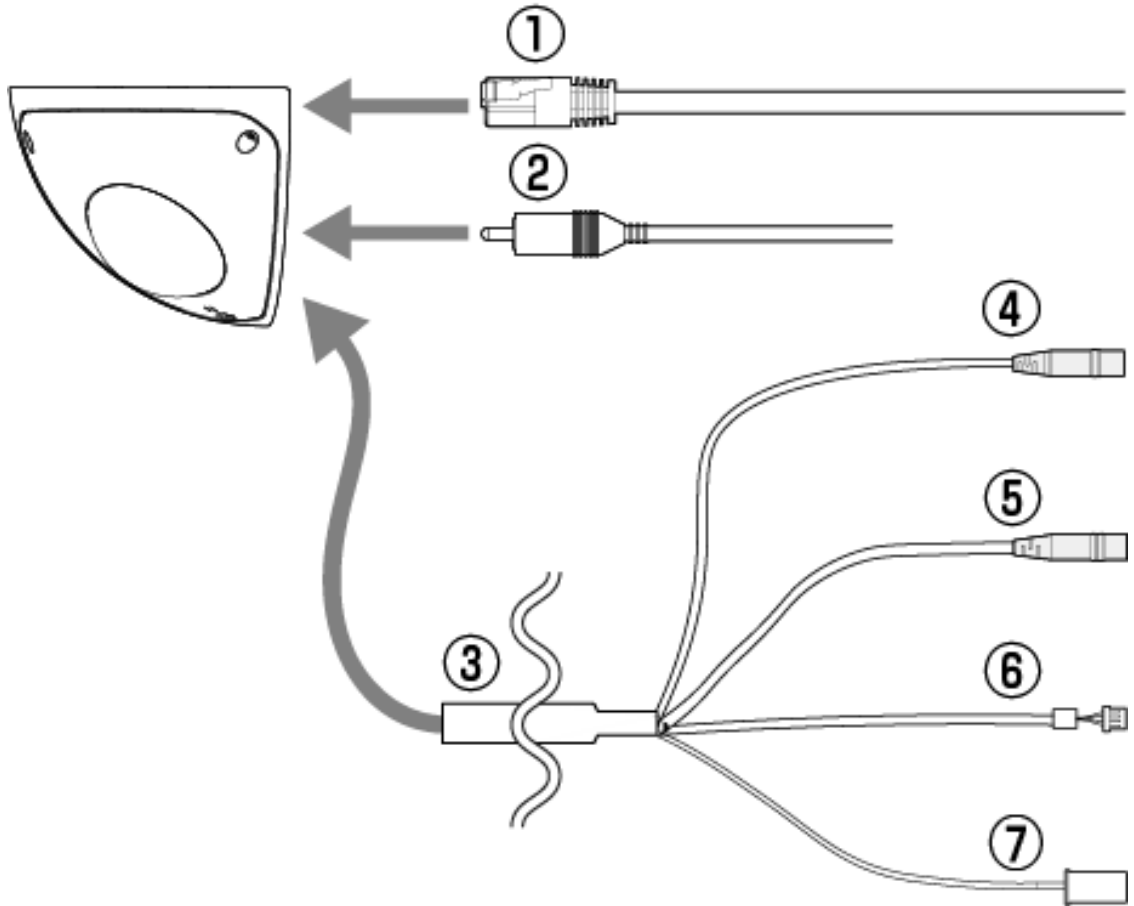
For more information about the indicators, see the User manual.

## 5.7 Button



- ① [SD ON/OFF] button
- ② [INITIAL SET] button

## 5.8 Cable



- ① Ethernet cable with RJ45 plug (category 5e or better, straight, all 4 pairs (8 pins), less than 100m {328 feet}) (locally sourced)
- ② Monitor cable (locally procured)
- ③ I/O Cable (optional)
- ④ Audio input cable (white)
- ⑤ Audio output cable (black)
- ⑥ EXT I/O cable
- ⑦ Power supply cable

## 6. Others

### 6.1 Initialize

You can initialize the main unit by pressing the [INITIAL SET] button. For the position of the [INITIAL SET] button, refer to the following.

→[Button](#)

1. Turn off the power of this product.
2. Turn on the power of this product while pressing the [INITIAL SET] button.
3. Press the [INITIAL SET] button for 15 seconds or longer after the power is turned on.
4. Release the INITIAL SET button
  - Approximately two minutes later, this product is started and the settings containing the network settings are initialized. If it does not start normally, try again.



When the [INITIAL SET] button is pressed (less than 1 second) to switch the output signal of the MONITOR OUT terminal, the MONITOR OUT terminal can be switched for the NTSC monitor or PAL monitor.

### 6.2 Check the software version

The functions of this product are implemented in software. We recommend that you first check the current software version if there is a problem with the operation of this product.

- Live image pages configuration panels>[Detailed setting]>[Camera detailed setting]>[Maintenance] of the Advanced menus on the left>Clicking on the [Upgrade] tabs displays the versioning window.
1. Check software versions with [Firmware version]
    - The current software version can be checked.



Up-to-date versions of software may contain modifications to specific problems.

## 6.3 Upgrade software

➤ Live image pages configuration panels>[Detailed setting]>[Camera detailed setting]>[Maintenance] of the Advanced menus on the left>When the [Upgrade] tabs are clicked, the software-upgradeable window is displayed.

1. Download the latest software to the PC
2. Click Select Files to specify the software you downloaded, and then click [Execute].



- Use a PC on the same subnet as this product to upgrade the version.
- Do not turn off the power of this product during version upgrading. Do not perform any operation until the version upgrade is completed.
- Be sure to check the version after upgrading. Also, delete the temporary Internet file.

## 6.4 Order of setting when adjusting image quality

It is recommended to set the settings for image quality in the following order: Adjustment of visibility → Adjustment of color → Removal of noise.

1. Adjust the visibility
  - [Light control mode], [Intelligent auto], [Super Dynamic], [Contrast level], [High light compensation(HLC)], [Adaptive black stretch], [Adaptive highlight stretch], [Maximum gain], [Maximum shutter], [Pedestal level]
2. Adjust the color
  - [White balance], [Chroma gain level]
3. Remove the noise
  - [Digital noise reduction], [Sharpness level]



Refer to the User Manual for details of each function.



- The image quality adjustment function may affect each other.
- If necessary, adjust the brightness level of the screen.

## 6.5 Adjusting object brightness (bright scenes)

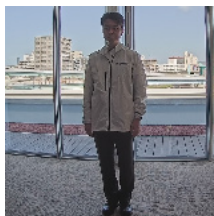
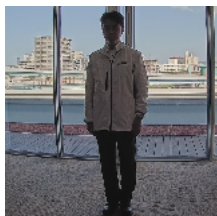
### 6.5.1 Adjusting brightness

Adjust the object brightness.

- Live image pages configuration panels>Clicking the [Image quality] tabs enables you to set the image quality.
1. Adjust the [Brightness] of [Image quality]
    - Moving in the [+] direction brightens the image.
    - Move in the [-] direction to darken the image.

[-]

Produce darker  
images



[+]

Create the  
brighter the  
photos





## 6.6 Adjusting object brightness (dark scenes)

### 6.6.1 Adjust the maximum gain

In dark scenes, the image becomes brighter by increasing the maximum gain.

➤ Live image pages configuration panels>Clicking the [Image quality] tabs enables you to set the image quality.

1. Adjust the [Maximum gain] to [+]



Increasing the maximum gain increases noise.

### 6.6.2 Adjust the maximum shutter

Increasing the maximum shutter makes the images brighter.

➤ Live image pages configuration panels>Clicking the [Image quality] tabs enables you to set the image quality.

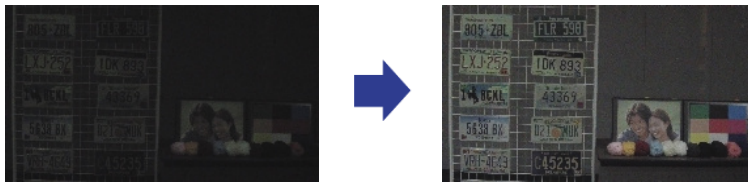
1. Select [Maximum shutter]
  - Selecting [Maximum shutter] longer than [Max 1/30s] brightens the image because the amount of light entered increases.



Increasing the maximum shutter increases the blur.

Maximum shutter : 1/30

Maximum shutter : 4/30



## 6.7 Reducing white flickering and blacking on the screen

### 6.7.1 Set Super Dynamic

When Super Dynamic is set to ON, both bright and dark areas are reproduced faithfully, even when shooting in a place with a large brightness difference.

- Live image pages configuration panels>Clicking the [Image quality] tabs enables you to set the image quality.

1. Set [Super Dynamic] to [On]



Set [Super Dynamic] to [Off] when the following phenomena are observed depending on the lighting condition.

- If flicker or color change occurs
- Noise in the bright area on the screen

Super Dynamic: Off



Super Dynamic: On



### 6.7.2 Set the backlight compensation

By setting [Backlight Corrector], the darkness of the indoor object is suppressed (brighter indoor object).

- Live image pages configuration panels>[Detail setting]>[Camera detailed setting]>[Image] or [Image/Audio] of the Advanced menus on the left>[Image adjust] in the [Image quality] tabs>

6. Others

6.7 Reducing white flickering and blacking on the screen

---

When [Advanced settings] is clicked, the image quality adjustment setting window is displayed.

1. Set to [Back light compensation(BLC)] in the [Super Dynamic] [BLC/ HLC]



If [Super Dynamic] is set to [On] or [Intelligent Auto] is set to [On], [Backlight Compensation] cannot be set.

Back Light Correction: Off



Back light correction: On

Level: 16



### 6.7.3 Set the high light compensation

By setting [High light compensation(HLC)], bright lights such as car headlights suppress the brightness of the object.

- Live image pages configuration panels>[Detailed setting]>[Camera detailed setting]>[Image] or [Image/Audio] of the Advanced menus on the left>[Image adjust] in the [Image quality] tabs>When [Setup] is clicked, the image quality adjustment setting window is displayed.

1. Select [High light compensation(HLC)] in [Super Dynamic] [BLC/ HLC]



If [Super Dynamic] is set to [On] or [Intelligent Auto] is set to [On], it cannot be set to [High light compensation(HLC)].

High light compensation :

Off



High light compensation :

On

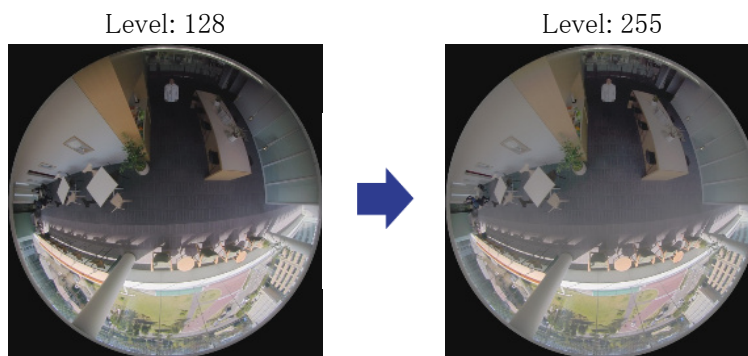


### 6.7.4 Adjust the adaptive black stretch

Adjust the [Adaptive black stretch] to brighten the dark areas of the images.

- Live image pages configuration panels>[Detail setting]>[Camera detailed setting]>[Image] or [Image/Audio] of the Advanced menus on the left>[Image adjust] in the [Image quality] tabs> When [Advanced settings] is clicked, the image quality adjustment setting window is displayed.

1. Adjust [Detail setting] [Adaptive black stretch] levels to [+]



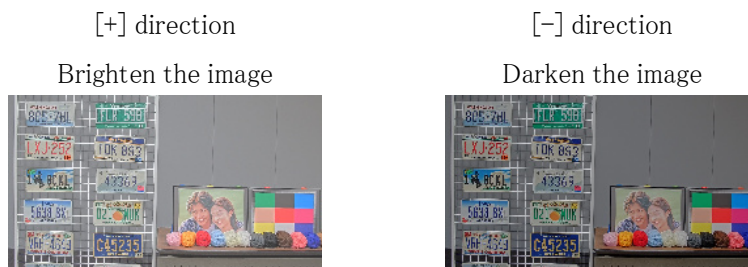
### 6.7.5 Adjust the [Pedestal level]

Adjust the [Pedestal level] to adjust the black level of the image.

- Live image pages configuration panels>[Detailed setting]>[Camera detailed setting]>[Image] or [Image/Audio] of the Advanced menus on the left>[Image adjust] in the [Image quality] tabs>When [Setup] is clicked, the image quality adjustment setting window is displayed.

1. Adjust the pedestal level of the [Detailed setting].

- Moving in the [+] direction brightens the image.
- Move in the [-] direction to darken the image.



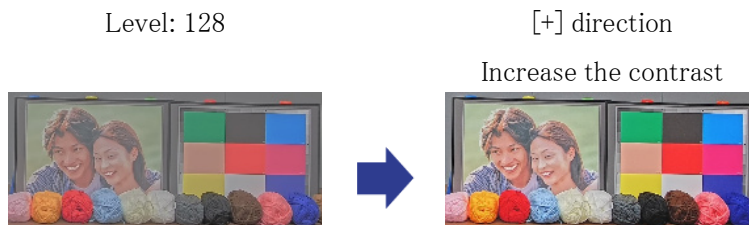
## 6.8 Adjust the object contrast

### 6.8.1 Adjust the contrast

By adjusting the [Contrast level] to increase the contrast between the light and dark images, visibility of the object with less contrast can be improved.

- Live image pages configuration panels>[Detailed setting]>[Camera detailed setting]>[Image] or [Image/Audio] of the Advanced menus on the left>[Image adjust] in the [Image quality] tabs>When [Setup] is clicked, the image quality adjustment setting window is displayed.

1. Adjust [Detailed setting] [Contrast level] levels to [+]



## 6.9 Reduce flicker

Flickers are automatically corrected by using [Light control mode].

- Live image pages configuration panels>Clicking the [Image quality] tabs enables you to set the image quality.

1. Select [Indoor scene (50 Hz)] or [Indoor scene (60 Hz)] for [Light control mode].
  - Use 50 Hz/60 Hz depending on the region.

## 6.10 Reducing the blur of object (bright scenes)

### 6.10.1 Set intelligent auto (motion priority level)

Using [Intelligent Auto], the camera identifies object with scenes (backlights, outdoors, night

## 6. Others

### 6.10 Reducing the blur of object (bright scenes)

---

scenes, etc.) and facial movements of people. The camera automatically adjusts the amount, gain, shutter speed, and contrast of light entering the camera from the camera's lenses to make it easier to see a moving object.

- Live image pages configuration panels>[Detail setting]>[Camera detailed setting]>[Image] or [Image/Audio] of the Advanced menus on the left>[Image adjust] in the [Image quality] tabs> When [Advanced settings] is clicked, the image quality adjustment setting window is displayed.
- 1. Adjust [Face priority level (Brightness)] and [Motion priority level (Shutter)] with [Intelligent Auto] set to [On].
  - By adjusting in the [+] direction, blurring of the object will be reduced.



Increasing the level in a low illumination environment increases noise.

Off (person blurred)



On (less blurring)



#### 6.10.2 Adjust the maximum shutter

Shortening the maximum shutter reduces blur.

- Live image pages configuration panels>Clicking the [Image quality] tabs enables you to set the image quality.
- 1. Selecting a shorter [Maximum shutter] than [Max. 1/30s]
  - If [Maximum shutter] is set to a shorter time than [Max. 1/30s], blur is reduced.

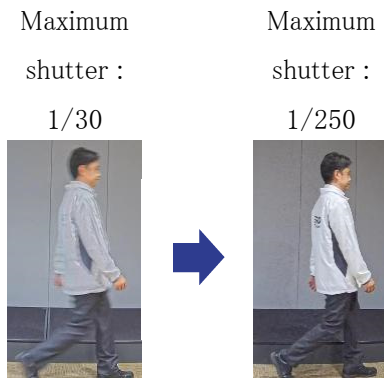


In low illumination environments, shortening the maximum shutter will darken the object and increase the noise.

## 6. Others

### 6.11 Reducing object blur (dark scenes)

---



## 6.11 Reducing object blur (dark scenes)

### 6.11.1 Adjust digital noise reduction

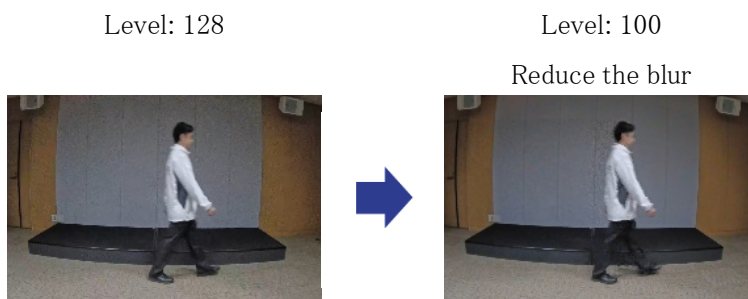
Reducing the effects of noise reduction by adjusting the [Digital noise reduction] reduces the blur.

➤ Live image pages configuration panels>Clicking the [Image quality] tabs enables you to set the image quality.

1. Adjust the [Digital noise reduction] in the [-] direction.



If the effect of noise reduction is reduced, the noise will increase.



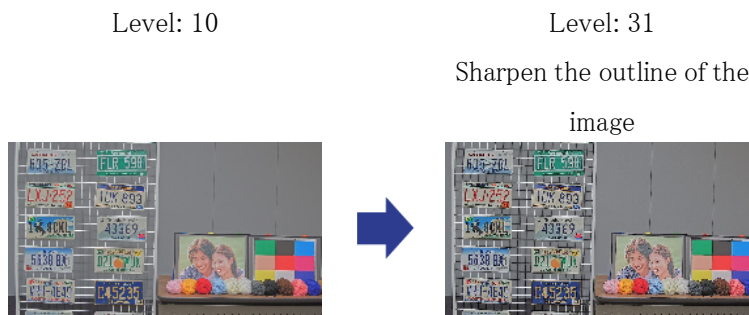
## 6.12 Sharpen the outline of the subject

### 6.12.1 Adjust the sharpness level

Adjust the [Sharpness level] to sharpen the outline of the images.

➤ Live image pages configuration panels>Clicking the [Image quality] tabs enables you to set the image quality.

1. Adjust the [Sharpness level] to [+]



## 6.13 Adjust the color

### 6.13.1 Adjust color density

Adjust the [Chroma gain level] to adjust the darkness.

➤ Live image pages configuration panels>[Detailed setting]>[Camera detailed setting]>[Image] or [Image/Audio] of the Advanced menus on the left>[Image adjust] in the [Image quality] tabs>When [Setup] is clicked, the image quality adjustment setting window is displayed.

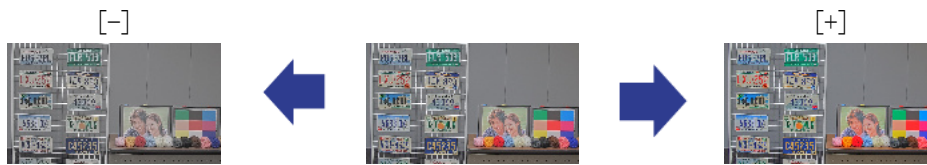
1. Adjust [Chroma gain level] in [Basic Adjustment] or [Detailed setting]
  - If you move the slider in the “+” direction, the colors will become loud and vivid.
  - If you move the slider in the “-” direction, the colors will become subdued.



## 6. Others

### 6.14 Reducing object noise (bright scenes)

---



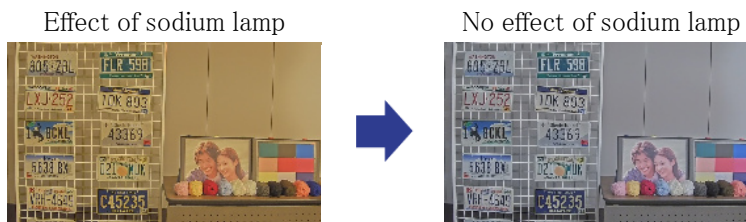
#### 6.13.2 Adjust the white balance

If the color is affected by a sodium lamp, use [White balance] to adjust the color.

- Live image pages configuration panels>[Detailed setting]>[Camera detailed setting]>[Image] or [Image/Audio] of the Advanced menus on the left>[Image adjust] in the [Image quality] tabs>When [Setup] is clicked, the image quality adjustment setting window is displayed.

1. Select [ATW2] in [White balance]

- The camera automatically adjusts the white balance under a sodium lamp.



### 6.14 Reducing object noise (bright scenes)

#### 6.14.1 Adjust the sharpness level

Adjusting the [Sharpness level] to make the images soft reduces the noise around the object.

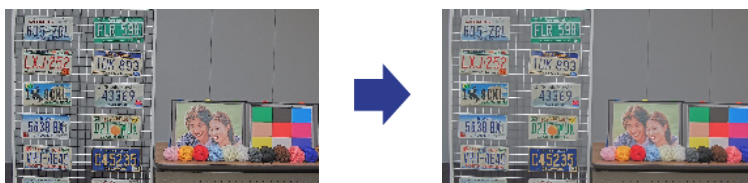
- Live image pages configuration panels>Clicking the [Image quality] tabs enables you to set the image quality.

1. Adjust the [Sharpness level] in the [-] direction.

Level: 31

Level: 5

Soften the outline of the  
image



## 6.15 Reducing object noise (dark scenes)

### 6.15.1 Adjust digital noise reduction

By adjusting the [Digital noise reduction] and increasing the effects of noise reduction, noise is reduced.

➤ Live image pages configuration panels>Clicking the [Image quality] tabs enables you to set the image quality.

1. Adjust the [Digital noise reduction] to [+]



Increasing the effects of noise reduction increases blur.

Level: 90



Level: 255

Reduce noise



## 6.16 Troubleshooting

**Check the symptoms on this table before asking for repair.**

Contact the dealer from whom you purchased the watch if you do not recover from any of these problems or if you have symptoms other than those listed in this table.

6. Others

6.16 Troubleshooting

Phenomenon	Probable Causes	Measures	Reference
Be not powered on	<p>For a PoE power supply</p> <ul style="list-style-type: none"> <li>•Is the Ethernet cable of this product connected to the power supply device for PoE (IEEE 802.3af compliant)?</li> <li>•Some power supply devices that can connect multiple PoE terminal devices will not supply power if the total power supply exceeds the limit.</li> </ul> <p>For DC power supply</p> <ul style="list-style-type: none"> <li>•Is the cable from the DC 12V power supply connected correctly and securely to the camera?</li> <li>•Does the AC adapter meet the this product rating?</li> </ul>	<ul style="list-style-type: none"> <li>•Check if it is connected.</li> <li>•Refer to the instruction manual of the PoE power supply.</li> <li>•Check if it is connected.</li> <li>•Check the AC adapter rating.</li> </ul>	Installation
The LINK indicator does not illuminate orange when the network cable is connected.	<ul style="list-style-type: none"> <li>•Is the Ethernet cable connected correctly to the this product?</li> <li>•Is the hubs or routers to which the this product is connected working correctly?</li> <li>•Is the Ethernet cable connected to the this product broken?</li> </ul>	<ul style="list-style-type: none"> <li>•Connect the Ethernet cable properly.</li> <li>•Check that your hub or router is working correctly.</li> <li>•Replace with another Ethernet cable.</li> </ul>	—
Generate noise in the audio input	The following may be considered.		Installation

6. Others

6.17 Precautions pertaining to usage

---

Phenomenon	Probable Causes	Measures	Reference
	<ul style="list-style-type: none"><li>•The grounding of the camera, switching hub, and peripheral equipment is not grounded.</li><li>•Power lines, etc. are connected nearby.</li><li>•There are equipment that generates strong electric and magnetic fields in the vicinity (such as television and radio transmission antennas, air conditioner motors, power transformers, etc.).</li></ul>	If the peripheral is not improved, use a microphone with an amplifier or connect an audio output with low output impedance.	

## 6.17 Precautions pertaining to usage

- **Impact on image/image quality**

Image quality may deteriorate or the image may be difficult to see under the installation conditions below.

- When raindrops adhere to the Dome covers during rainfall
- When snow adheres to the Dome covers due to wind during snow accumulation (the degree of snow adherence depends on the amount of snow fall and the snow quality)
- Contamination of the Dome covers due to airborne dust or automotive exhaust

- **About the built-in microphone**

- If water adheres to the opening of the built-in microphone, the sound volume may drop. Allow it to dry thoroughly before use.
- When cleaning the opening of the built-in microphone, do not stick it with a sharp object. Failure to heed this warning may result in failure.

- **Do not apply strong shocks to the Dome covers.**

Otherwise damage or flooding can result.

- **Do not touch lenses or Dome covers directly.**

If dirty, image quality may deteriorate.

- **Batteries**

The battery is built into this product. Do not leave the battery in an environment exposed to excessive heat from sunlight or fire.

- **If this product is no longer in use, do not leave it unattended and must be removed.**

- **Open Source Software**

- This product includes open source software licensed under GNU General Public License (GPL), GNU Lesser General Public License (LGPL), and others.
- You may obtain the source code of such software and reproduce, distribute and modify it in accordance with GPL or LGPL.
- For more information on licensing open source software and source code, refer to the [Support] page [Click here for OSS information] on this product's configuration menu to view the information displayed.
- Please note that we shall not respond to any inquiries regarding the contents of the source code.

- **Copyright**

Except for open source software licensed under GPL/LGPL or otherwise, transfers, copying, disassembly, decompilation, and reverse engineering of the software contained in this product are prohibited. In addition, any act of export that violates the export laws and regulations of all software included in this product is prohibited.

- **For trademarks and registered trademarks**

- Microsoft, Windows, Windows Media, Internet Explorer, Microsoft Edge, and ActiveX are registered trademarks or trademarks of Microsoft Corporation in the United States and/or other countries.
- Intel and Intel Core are trademarks of Intel Corporation or its subsidiaries in the United States and/or other countries.
- Adobe, Acrobat, and Reader are either registered trademarks or trademarks of Adobe in the United States and/or other countries.
- microSDXC Logo is a trademark of SD-3C, LLC.
- iPad and iPhone are trademarks of Apple Inc., registered in the United States and other countries.
- Android and Google Chrome are trademarks of Google LLC.
- Firefox is a trademark of the Mozilla Foundation in the United States and other countries.
- QR Code is a registered trademark of DENSO WAVE INCORPORATED in Japan and other

countries.

- Other company names and product names described in this manual are trademarks or registered trademarks of each company.

## 6.18 Disclaimer

IN NO EVENT SHALL i-PRO Co., Ltd. BE LIABLE TO ANY PARTY OR ANY PERSON, EXCEPT FOR REPLACEMENT OR REASONABLE MAINTENANCE OF THE PRODUCT, FOR THE CASES, INCLUDING BUT NOT LIMITED TO BELOW:

1. ANY LOSS OR DAMAGE, INCLUDING WITHOUT LIMITATION, DIRECT OR INDIRECT, SPECIAL, CONSEQUENTIAL OR EXEMPLARY, ARISING OUT OF OR RELATING TO THE PRODUCT;
2. ANY INCONVENIENCE, LOSS, OR DAMAGE CAUSED BY INAPPROPRIATE USE OR NEGLIGENT OPERATION OF THE USER;
3. ALL MALFUNCTIONS OR TROUBLES FROM UNAUTHORIZED DISASSEMBLE, REPAIR OR MODIFICATION OF THE PRODUCT BY THE USER, REGARDLESS OF THE CAUSE OF THE MALFUNCTION OR TROUBLE;
4. INCONVENIENCE OR ANY LOSS ARISING WHEN IMAGES ARE NOT DISPLAYED, DUE TO ANY REASON OR CAUSE INCLUDING ANY FAILURE OR PROBLEM OF THE PRODUCT;
5. ANY PROBLEM, CONSEQUENTIAL INCONVENIENCE, OR LOSS OR DAMAGE, ARISING OUT OF THE SYSTEM COMBINED BY THE DEVICES OF THIRD PARTY;
6. ANY CLAIM OR ACTION FOR DAMAGES BROUGHT BY ANY PERSON OR ORGANIZATION AS A PHOTOGRAPHED SUBJECT DUE TO VIOLATION OF PRIVACY CONCERNING A SURVEILLANCE CAMERA'S PICTURE OR SAVED DATA, FOR SOME REASON (INCLUDING USE WHEN USER AUTHENTICATION ON THE AUTHENTICATION SETTING SCREEN IS SET TO OFF), BECOMING PUBLIC OR BEING USED FOR ANY PURPOSE;
7. LOSS OF REGISTERED DATA CAUSED BY ANY FAILURE (INCLUDING INITIALIZATION OF THE PRODUCT DUE TO FORGOTTEN AUTHENTICATION INFORMATION SUCH AS A USER NAME AND PASSWORD);

### **Limitation of liability**

THIS PUBLICATION IS PROVIDED "AS IS" WITHOUT WARRANTY OF ANY KIND, EITHER

EXPRESS OR IMPLIED, INCLUDING BUT NOT LIMITED TO, THE IMPLIED WARRANTIES OF MERCHANTABILITY, FITNESS FOR ANY PARTICULAR PURPOSE, OR NON-INFRINGEMENT OF THE THIRD PARTY'S RIGHT.

THIS PUBLICATION COULD INCLUDE TECHNICAL INACCURACIES OR TYPOGRAPHICAL ERRORS. CHANGES ARE ADDED TO THE INFORMATION HEREIN, AT ANY TIME, FOR THE IMPROVEMENTS OF THIS PUBLICATION AND/OR THE CORRESPONDING PRODUCT (S).

## 6.19 NETWORK RELATIONSHIP

Since this product is connected to the network, it may be damaged as follows.

- ① Leakage or leakage of information via this product
- ② Malicious operation of this product by a malicious third party
- ③ Interference or stoppage of this product by a malicious third party

In order to prevent such damage, take adequate network security measures including the following measures under the responsibility of the customer.

- Use this product on a secure network using firewalls, etc.
- Confirm that computer viruses and malicious programs are regularly checked and exterminated when the computer is connected to the system.
- Use user authentication, set user names and passwords, and restrict users who can log in to protect against unauthorized attacks.
- To prevent image data, authentication information (user name, password), alarm mail information, FTP server information, DDNS server information, etc., from being leaked on the network, measures such as restricting access by user authentication are implemented.
- All browsers must be closed after administrator access to this product.
- The password of the administrator is changed periodically. In addition, authentication information (user name, password) shall be appropriately stored so that it is not visible to third parties.
- Do not install this product or cables in a place where they are easily destroyed.