

# About IP Setting Software

## Table of Contents

Preface .....	1
Launch the IP Setting Software.....	2
Search for cameras .....	2
Display the “Live” page of camera.....	3
Configure the network settings of camera .....	5

## Preface

Displaying of the “Live” page of a camera and configuration of the network settings of a camera are available using the “IP Setting Software”.

Connect to a camera in the following procedure.

- ① Launch the “IP Setting Software”. (☞ Launch the IP Setting Software)
- ② If necessary, configure the network settings of the camera. (☞ Configure the network settings of camera)
- ③ Connect to the camera. (☞ Display the “Live” page of camera)

## Launch the IP Setting Software

Double-click the downloaded file (EasyIpSetup.exe) to launch this software.

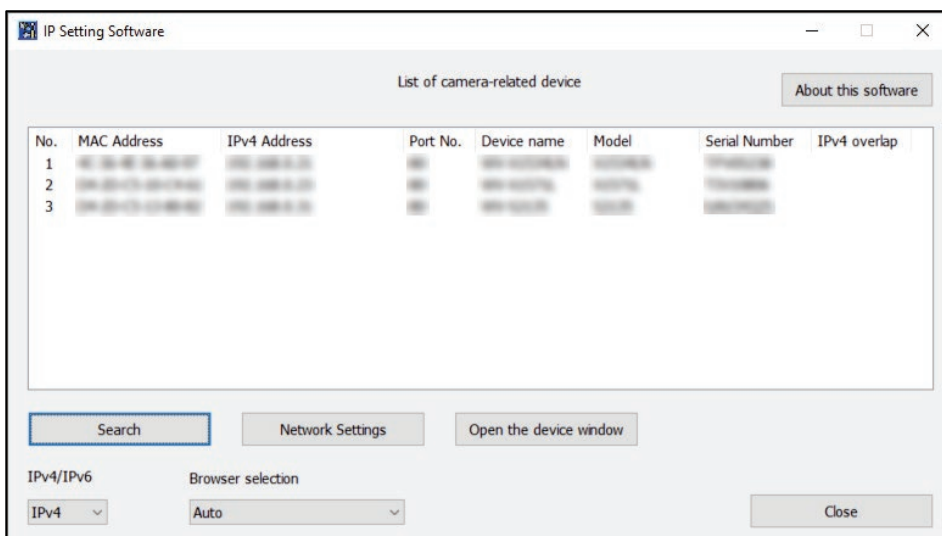
Information of the found cameras including MAC address and IP address will be displayed.

### Note

- When the License Agreement is displayed, read the Agreement and choose “I accept the terms in the license agreement”, and then click [OK].
- When duplicate IP addresses are used, the number of the camera with the duplicate address is displayed in overlap.
- The displayed camera information is not automatically updated. Click the [Search] button to update the information.
- It is possible to change the “List of camera-related device” display between IPv4 addresses and IPv6 addresses in accordance with the protocol in use.
- The information displayed can be sorted by clicking the title of each displayed item.

### IMPORTANT

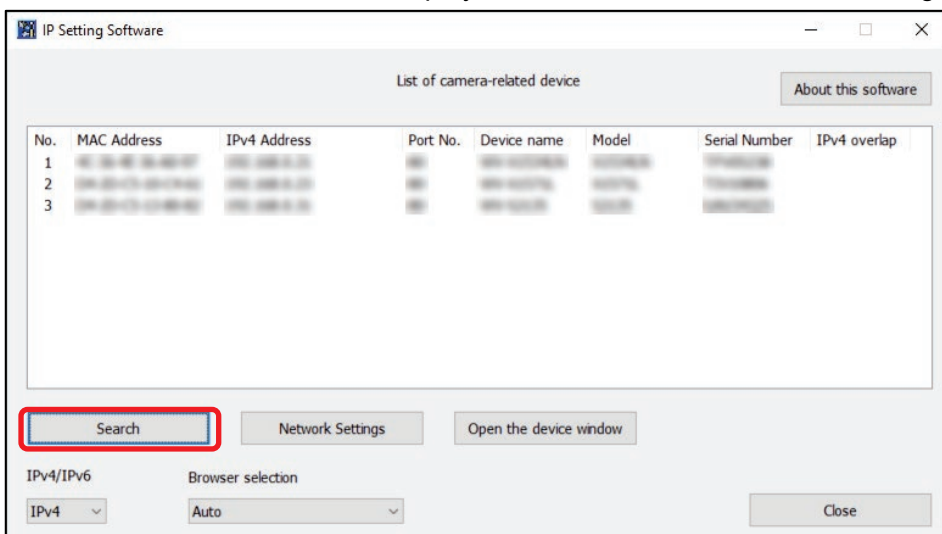
- The “Windows Security Alert” window may be displayed when starting the “IP Setting Software”. In this case, disable “User Account Control” from the control panel.
- “IP Setting Software” is inoperable in other subnets via the same router.



## Search for cameras

Click the [Search] button to search for the connected cameras.

The connected cameras will be displayed with network information including MAC addresses and IP addresses.

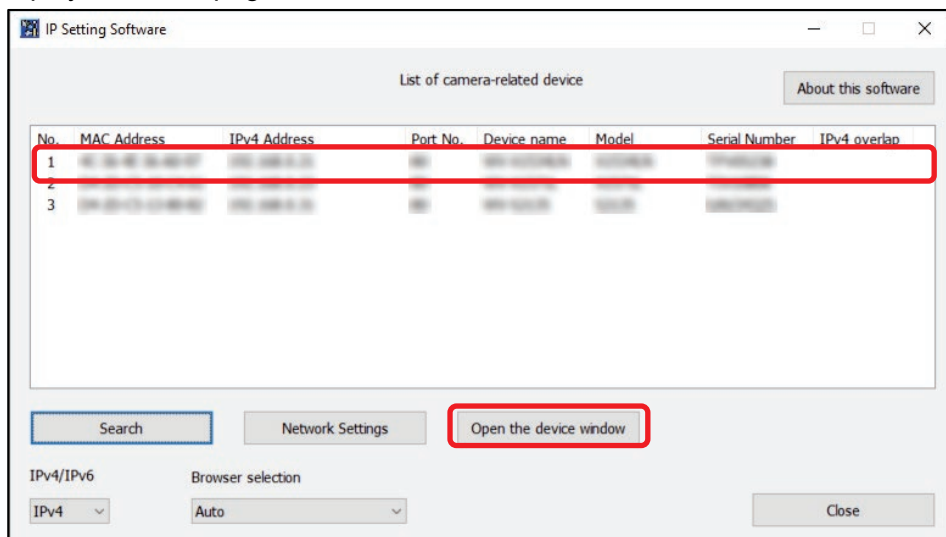


### Note

- When using a DHCP server, the IP address assigned to the camera can be displayed by clicking the [Search] button of the “IP Setting Software”.

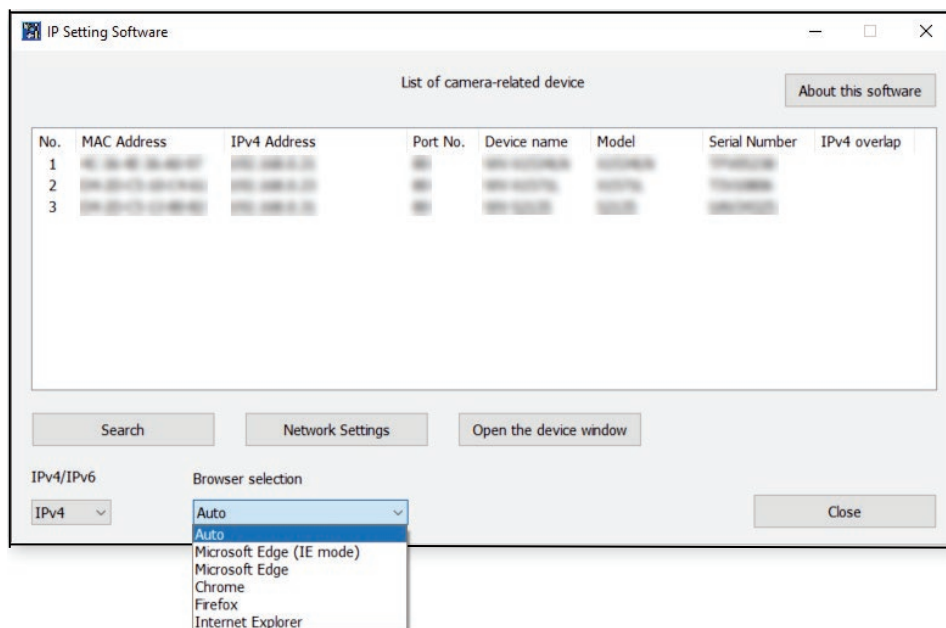
## Display the “Live” page of camera

Click the MAC address/IP address of the desired camera and then click the [Open the device window] button to display the “Live” page of the camera.



### Note

- Click the same MAC address described on the label attached to the desired camera.
- It is possible to select the browser to display the “Live” page of the camera from the [Browser selection] pull-down menu. When “Auto” is selected, the “Live” page of the camera will be displayed with the default web browser on Windows or IE mode of Microsoft Edge. Select “Auto” under normal usage. Only in a case where a specific web browser is needed to be used, select the web browser from the pull-down menu.



The “Live” page of the camera is displayed.

**Note**

- Depending on the environment of your PC, it may take time for images to be displayed.
- When the viewer software installation screen is displayed, follow the on-screen instructions to install the software. (The viewer software is installed from the camera.)
- When the administrator registration window is displayed, enter “User name”, “Password” and “Retype password” by following the instructions displayed on the screen, and then click the [Set] button.

**Administrator registration**  
Enter the user name and password of the administrator.

User name (1 to 32 characters)	<input type="text"/>
Password (8 to 32 characters)	<input type="password"/>
Retype password	<input type="password"/>

**Set**

Note:

- (1) Distinguish between upper- and lower cases.
- (2) Entry of the following is not allowed as a user name: 2-byte characters, and 1-byte symbols " & ; ; \
- (3) Entry of the following is not allowed as a password: 2-byte characters, and 1-byte symbols " & ; ; \
- (4) For the password, use three or more types of characters from upper- and lowercase alphabetic characters, numbers, and symbols.
- (5) Keep the user name and password at hand so as not to lose.
- (6) It is recommended to change the password periodically.
- (7) Set the password which does not include the user name.

Please keep your user name and password in a safe place free from public view to ensure security. After completing the registration, the camera will automatically be re-connected and the authentication window will be displayed. Enter the registered user name and password. The default setting of user authentication is “On”. For further information, refer to the “Preface” section in the Operating Instructions.

**IMPORTANT**

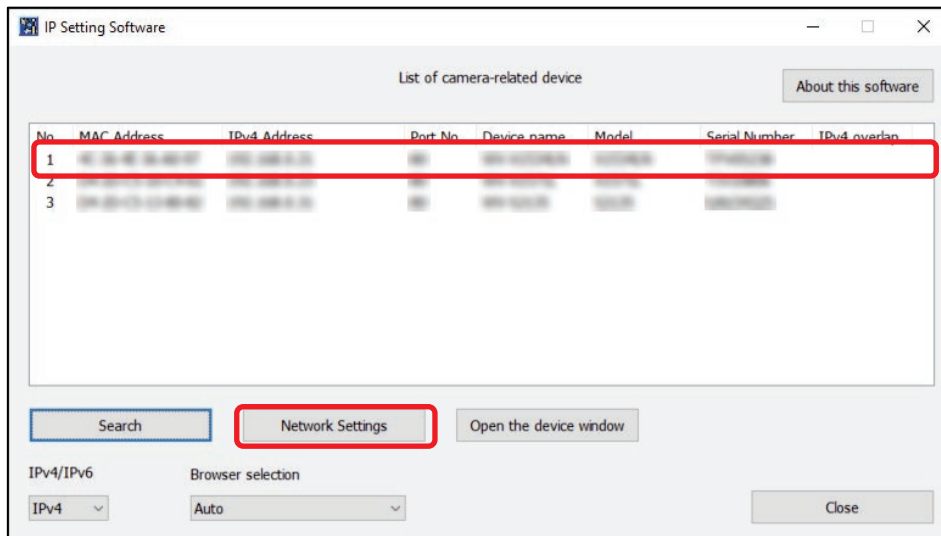
- When the camera is used over the Internet, setting user authentication to “Off” may lead to unintended access by a third party. Please leave user authentication set to “On”.

## Configure the network settings of camera

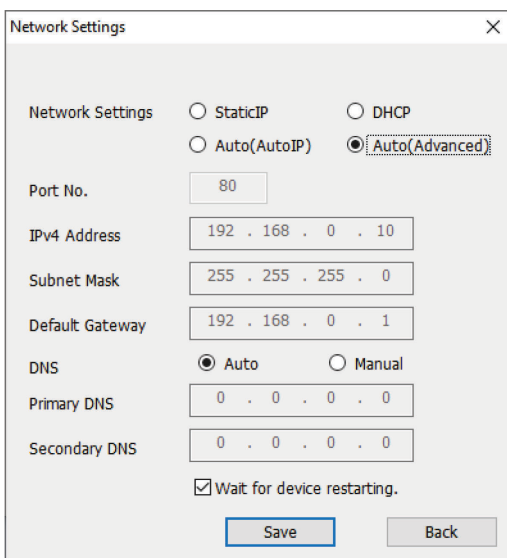
To display the “Network Settings” screen to change the network settings including the connection mode, the IP address, and the subnet mask, click the MAC address/IP address of the desired camera and then click the [Network Settings] button.

### Note

- Click the same MAC address described on the label attached to the camera to be configured.



The “Network Settings” screen is displayed. Enter each item and then click the [Save] button. Contact the network administrator or your Internet service provider for information about configuring the settings of the network.



### Note

- When using multiple cameras, it is necessary to configure the network settings of each camera independently.
- By unchecking the “Wait for device restarting.” checkbox, multiple cameras can be continuously configured.
- If the “IP Setting Software” does not work, access the “Network” page from the setup menu of the camera in the browser and perform settings separately.
- The initial value of [Network Settings] may differ depending on the camera.

### IMPORTANT

- It may take for around 2 minutes to complete to upload the settings to the camera after clicking the [Save] button. The settings may be invalidated when the LAN cable is disconnected before completing the upload. In this case, perform the settings again.
- When using a firewall (including software), allow access to all UDP ports. Once the camera configuration is completed, return to the original state.
- Due to security enhancements in “IP Setting Software”, “Network Settings” of the camera to be configured cannot be changed when around 20 minutes have passed after turning on the power of the camera. (When the effective period is set to “20min” in the “Easy IP Setup accommodate period”.) However, settings can be changed after 20 minutes for cameras in the initial set mode.