

iii-PRO

Operating Instructions

Extension Software

(AI Privacy Guard)

Model No. **WV-XAE201W**



Before attempting to connect or operate this software,
please read these instructions carefully and save this manual for future use.

The model number is abbreviated in some descriptions in this manual.

Contents

Introduction.....	3
Preface.....	3
Features	3
About the Operating Instructions.....	3
System requirements for a PC.....	3
Before using this product	4
Operation flow	5
Install the Software	5
How to obtain and register the Registration Key.....	6
Necessary Setup	8
Setup menu.....	8

Introduction

Preface

The Extension Software WV-XAE201W (hereafter referred to as this software) is software for using more conveniently the AI network camera (option, hereafter referred to as the camera). It is possible to use the "AI Privacy Guard function" for detecting and pixelating faces or persons by installing this product and registering the Registration Key.

Important:

- This product is necessary for each camera.
- See the following URL for information such as the models supported by this software, the software version, etc.
<https://i-pro.com/global/en/surveillance/training-support/support/technical-information>

Features

- Faces or persons in camera images are detected by AI processing, and their regions are pixelated or solid filled to prevent individual identification.

About the Operating Instructions

This document explains the method of registering this product in a camera, settings that need to be made before starting to operate this software, and the method of operation for using this product. Since this product has been designed to be used after registering in a camera, before using this product always be sure to read also the Operating Instructions of the camera with which this product is to be used.

Based on the specific model of a camera which is used, its screen may be different from the screen of a camera shown in this manual.

In this manual, a network disk recorder is referred to merely as a recorder, and a personal computer is referred to as a PC.

In this document, "Pixelating" and "Solid filling" are both expressed as "Pixelating" from the next page onwards.

System requirements for a PC

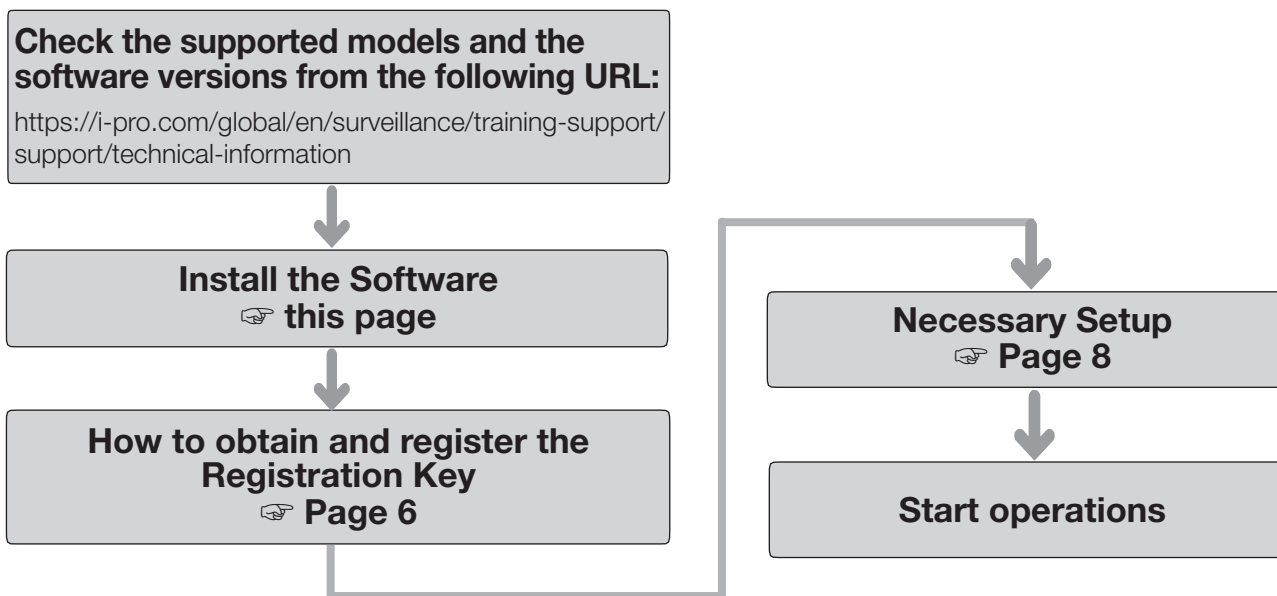
For the requirements of PC, and supported browsers which are used for settings refers to the Operating Instructions of a camera.

Before using this product

- Pixelating may not be possible in the following cases.
 - When the target face or person is not focused.
 - When the target face or person is blurred.
 - When the target face or person is over-exposed or under-exposed.
 - When part of the target face or person is displayed.
 - When the target face or person is not looking up.
 - When part of the target face or person is displayed, the privacy zone set in [Setup] - [Image/Audio] - [Image quality] of the camera is hidden.
 - When the target face is wearing a mask or sunglasses.
 - When the target face or person is too close to the camera.
 - When the target face or person is too small.
- When "Persons" is selected as the "Privacy Guard target" in the "AI Privacy Guard" settings screen, pixelating may not be possible if the face is not present in the image.
- When too many persons (guideline: 100 or more persons) are present in the camera image, it may not be possible to carry out pixelating for each person.
- Pixelating may not be possible for a part of a person's body such as legs, arms, etc.
- Pixelating may not be possible when a person who lies down or collapses over the ground.
- Pixelating may be done even in parts of the image where there are no faces or persons.
- Pixelating can even be done for dolls or posters.
- Pixelating may be done in areas larger than the target faces or persons.
- The entire image may be pixelated if autofocus is carried out when the AI Privacy Guard function is active.
- In a pixelated stream, the video transmission from other streams may be delayed.
- i-RPO Co., Ltd. shall be not responsible for any inconveniences, losses, or damages caused by the different settings of the AI Privacy Guard function or as a result thereof.
- The AI Privacy Guard function is not intended for preventing theft, disaster, etc. i-RPO Co., Ltd. shall not bear any liabilities whatsoever for any accidents or damages that have occurred.

- For Disclaimer, Trademarks and registered trademarks, and Copyright, please refer to the Operating Instructions of the camera.

Operation flow



Note:

- If you are using a camera with the software pre-installed, read "Necessary Setup".

Install the Software

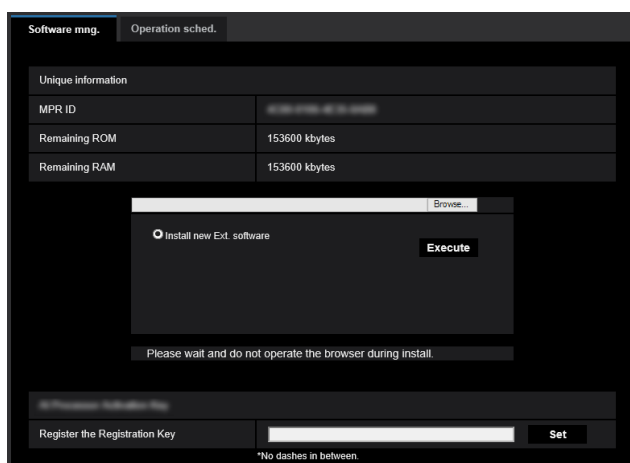
Follow the steps below to download this product and install it on your camera.

- (1) Access the following URL to download "AI Privacy Guard" and save it onto the PC.
<https://i-pro.com/global/en/surveillance/training-support/documentation-database-list>

Important:

- A space cannot be used in the name of the saving directory.

- (2) Select the [Setup] - [Ext. software] - [Software mng.] tab of the camera.



Important:

- Check "Remaining ROM" and "Remaining RAM" of the camera. If disk space is insufficient, uninstall any other extension software already installed. For how to uninstall, refer to the "Operation settings" section in the Operating Instructions of the camera.

- (3) Click the [Browse...] button and designate the downloaded "AI Privacy Guard".
- (4) Make sure that "Install new Ext. software" is selected and click the [Execute] button. Then the software installation will begin. When the installation is completed, "AI Privacy Guard" will be added to the list of extended software and the "Software mng." screen. (The names may be partially omitted.)

Important:

- Do not turn off the power of the camera when installing the software.
- Do not perform any operations until the installation is completed.

How to obtain and register the Registration Key

This product DOES NOT need to be activated by "Registration Key" issued by Key Management System before you start using.

Follow the steps below to obtain the Registration Key.

<If you do not have your User ID and password for the Key Management System>

- * Access the website of the Key Management System and create your User ID and password.
Then start reading from STEP 1 below.

<If you already have your User ID and password for the Key Management System>

- * Access the website of the Key Management System and "Issue Registration Key" with the User ID and password that you have obtained.
Then start reading from STEP 2 below.

Note:

- This product has a trial period, during which you can use this product without registering the Registration Key. If you keep using it after the trial period (90 days), obtain and register the Registration Key.

STEP 1 Sign up

Create your User ID and password, if this is the first time to access the Key Management system.

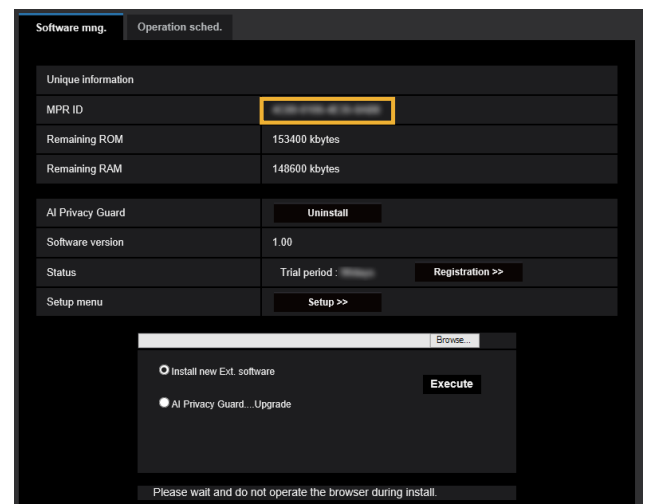
- Access the URL for PC below and sign up.
 - For PC
<https://kms.business.panasonic.net/jpkms/pc/home.htm>
- Login as a temporary user using the User ID and password written on the web page.
- Register required information and create your User ID and password.

Important:

- Keep your User ID and password safe. You do not need to obtain a new User ID from the next time. Use the User ID already issued.
- It is recommended to change the password periodically.

STEP 2 Obtain the Registration Key

- Check the MPR ID, Activation Key No. and Registration ID.
 - For the MPR ID, refer to [MPR ID] on the [Setup] - [Ext. software] - [Software mng.] tab of the camera.



- The Activation Key No. and Registration ID are shown on the Activation Key Card.

Note:

The MPR ID can also be checked on the product package.

How to obtain and register the Registration Key (Continued)

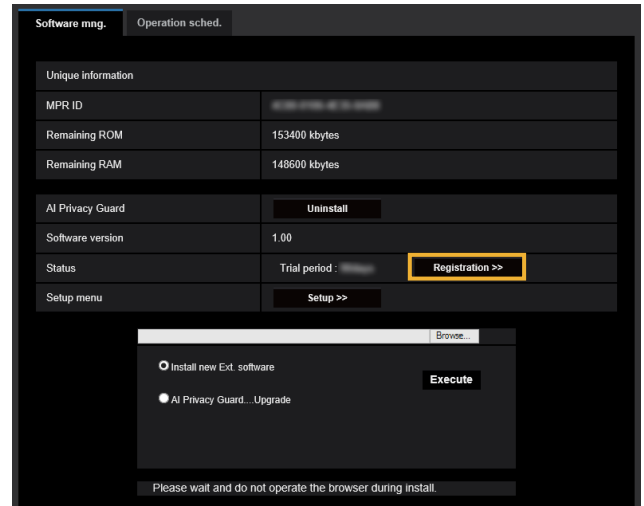
- (2) Access to the following URL "Key Management System" from your PC or Smartphone.
 - For PC:
<https://kms.business.panasonic.net/ipkms/pc/home.htm>
 - For Smartphone:
<https://kms.business.panasonic.net/ipkms/m-key/>
- (3) Login using your User ID and password.
- (4) Click [Issue Registration Key] button.
- (5) Select your product from the menu and click [Next step] button.
- (6) Input your "MPR ID", "Activation Key No." and "Registration ID".
- (7) Click the [Issue] button.
- (8) Then "Registration Key" will be issued on the screen and sent to your e-mail address.
We recommend keeping "Registration Key" together with Activation Key Card for future support.

Important:

- Please make sure the combination between "MPR ID" and "Activation Key No." is correct when issuing "Registration Key". Because once you issued "Registration Key", you cannot issue new one from the same "Activation Key No."
- To issue the Registration Key for another camera, go through (6) and (7) of STEP 2.
- If you register multiple Registration Keys for one camera, you can issue them at the same time by entering multiple Activation IDs and Encryption IDs in STEP 2 (6).

STEP 3 Register the Registration Key

- (1) Select [Setup] - [Ext. software] - [Software mng.] tab of the camera.



- (2) Click the [Registration >>] button to display the "Registration of application" screen.



- (3) Enter the Registration Key obtained in STEP 2 in the "Registration Key" field with no dashes (-) in between, and click the [Set] button. Once you register the Registration Key, the "AI Privacy Guard" function will be activated.

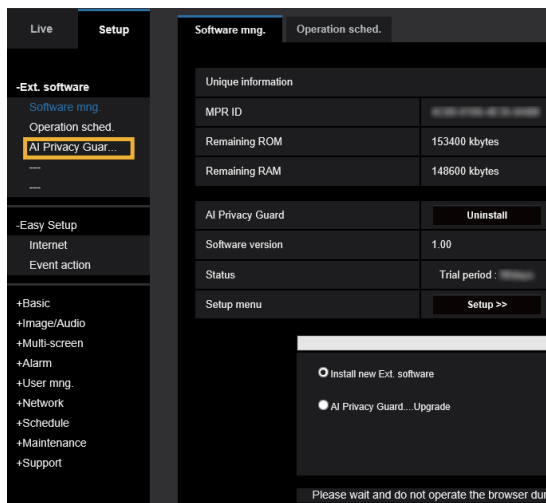
Note:

The registration of the Registration Key is only operable by users whose access level is "1. Administrator". Refer to the operating instructions of the camera for how to configure the access level.

Necessary Setup

Setup menu

When the AI Privacy Guard function is activated, the "AI Privacy ..." menu is added to "Ext. software" in the settings screen of the camera.



[AI Privacy Guard]

Upon selecting this, the "AI Privacy Guard setting" screen is displayed.



[Privacy Guard target]

Select the target for pixelating using the detection result by AI processing.

- Off: No pixelating is carried out.
- Face: Pixelating is carried out when a part of an image is judged by AI processing to be a face.
- Human: Pixelating is carried out on the area of an image which is judged by AI processing to be a human.

Initial value: Off

[Target stream]

Select the target stream for carrying out pixelating.

- Off: No pixelating is carried out for any stream.
- Stream (1): Pixelating is carried out only for Stream (1).
- Stream (2): Pixelating is carried out only for Stream (2).
- Stream (3): Pixelating is carried out only for Stream (3).

Stream (4): Pixelating is carried out only for Stream (4).

Stream (2) & Stream (4): Pixelating is carried out only for Stream (2) or Stream (4).

Initial value: Off

Note:

- When "Stream (2) & Stream (4)" is selected, "Stream (1)" and "Stream (2)" of the camera will have the same resolution. In addition, "Stream (3)" and "Stream (4)" of the camera will have the same resolution.
- Set to "Stream (2) & Stream (4)" when the AI Privacy Guard function is used using a recorder made by our company.
- AI Privacy Guard does not support the transmission of JPEG video.

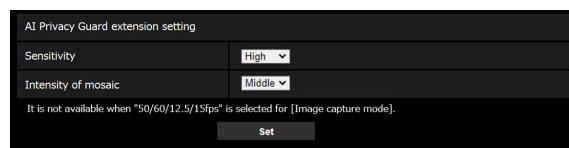
[Masking method]

Select the type of masking.

- Blurring: Blurring is done for the detected target.
 - Block: Block is done for the detected target.
- Initial value: Blurring

[AI Privacy Guard extension setting]

Configure the extension settings for AI Privacy Guard. Access the following URL to display the setting screen.
[http://\[IP address\]/admin/setup_mosaic_extend.html](http://[IP address]/admin/setup_mosaic_extend.html)



[Sensitivity]

Select the sensitivity of AI Privacy Guard. The higher the mosaic, the easier it will be applied.

Low, Medium, High

Default setting: High

Necessary Setup (continued)

[Intensity of mosaic]

Select the intensity of mosaic. The stronger the value, the more difficult it is to see the subject.

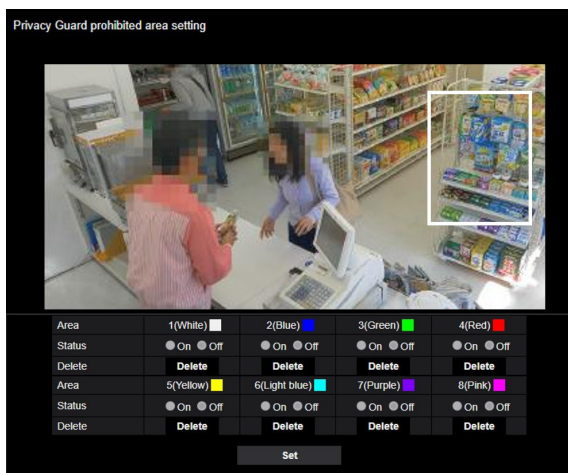
Low, Middle, High

Default setting: Middle

[Privacy Guard prohibited area setting]

Configure the prohibited area settings for AI Privacy Guard. Access the following URL to display the setting screen.

[http://\[IP address\]/admin/setup_mosaic_mask.html](http://[IP address]/admin/setup_mosaic_mask.html)



[Area]

Masking zone (square): Draw the prohibited area as a rectangle. Settings for up to 8 locations are distinguished by the color of the drawing line.

The color of the drawing line is in order starting with "1 (White)".

[Status]

Set whether the prohibited area is enabled or not.

On: Prohibited area is enabled. Frames are displayed in solid lines for areas with occupancy detection enabled.

Off: Prohibited area is disabled. Frames are displayed in dashed lines for areas with occupancy detection disabled.

Default setting: [Area 1]/[Area 2]/[Area 3]/[Area 4]/[Area 5]/[Area 6]/[Area 7]/[Area 8] Off

[Delete]

Delete the selected prohibited area.

Important:

- The JPEG (2) cannot be used if the AI Privacy Guard function is used.
- If the AI Privacy Guard function is used, it is not possible to make the "Maximum exposure time" settings of "2/30 s max", "4/30 s max", "6/30 s max", "10/30 s max", "16/30 s max", "2/25 s max", "4/25 s max", "6/25 s max", "10/25 s max", and "16/25 s max". In addition, "On (Framerate Control)" in "GOP control" of "Smart coding" cannot be used.
- If the setting of the target stream of the AI Privacy Guard function is changed, video transmission of the camera and manual recording in an SD card will be stopped temporarily.
- Based on the camera which is used, the transmission frame rate is limited when using AI Privacy Guard function. Refer to the following URL for details.
<https://i-pro.com/global/en/surveillance/training-support/support/technical-information>
<Control No.: C0103>
- It is possible to schedule the time to operate AI privacy Guard may by setting the "Operation schedule". For the procedure for setting the operation schedule, refer to the Operating Instructions of the camera.

For U.S. and Canada:

i-PRO Americas Inc.

For Europe and other countries:

i-PRO EMEA B.V.

<https://www.i-pro.com/>