



M-NVR-4CH-4POE
M-NVR-8CH-8POE
M-NVR-16CH-8POE

Network Video Recorders
Quick Guide

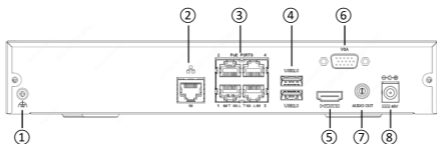
1. Indicators

LED	Status	Description
RUN(Operation)	Steady on	Normal.
	Blinking	Starting up.
NET(Network)	Steady on	Connected to network.
CLOUD *M-NVR-16CH-8POE only	Steady on	Connected to cloud.
HD(Hard disk)	Steady on	No disk; or disk is abnormal.
	Blinking	Reading or writing data.

2. Interfaces

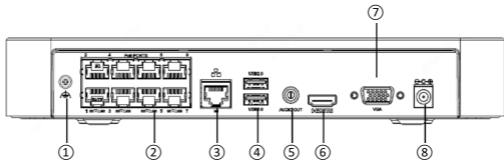
The following part shows the interfaces of two typical models.

Figure 2-1 M-NVR-4CH-4POE



Interface	Description	Interface	Description
①	Grounding	②	Network
③	PoE ports	④	USB
⑤	HDMI output	⑥	VGA output
⑦	Audio output	⑧	DC power input

Figure 2-2 M-NVR-16CH-8POE



Interface	Description	Interface	Description
①	Grounding	②	PoE ports
③	Network	④	USB
⑤	Audio output	⑥	HDMI output
⑦	VGA output	⑧	DC power input

3. Disk Installation

The illustrations are for reference only. The actual device may vary.

3.1 Preparation

- Prepare a 1# or 2# Phillips screwdriver, a pair of antistatic gloves or a wrist strap.
- Disconnect power before installation.

3.2 HDD Installation

1. For M-NVR-4CH-4POE and M-NVR-8CH-8POE, loosen the screws on the rear panel and side panel and remove the upper cover.
For M-NVR-16CH-8POE, Loosen the screws on the bottom and remove the upper cover.

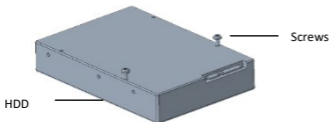
Rear Panel



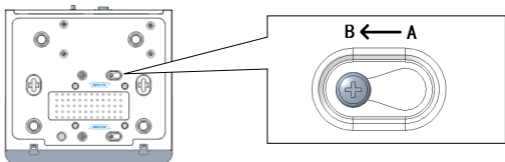
Side Panel



2. Insert 2 screws into the disk and tighten the screws halfway.



3. Slide the disk into place from A to B, and fix the 4 screws to secure the hard disk.



4. Connect the power cables and data cables.
5. Put the cover back in place and tighten the screws.


4. Startup and Shutdown

Make sure the cables are connected correctly and the device is grounded properly. Use a power supply that meets requirements.

4.1 Startup

Connect the device to power and turn on the power switch (if applicable).

4.2 Shutdown

Click  > **Shutdown** on the screen toolbar in live view page.

CAUTION!

Do not disconnect power when the NVR is operating or shutting down.

5. Local Operations

5.1 Login

Use the default username **admin** and password **123456** for your first login.

CAUTION!

The default password is intended only for the first login and must be changed to a strong one containing at least nine characters including letters, digits and special characters after your first login to ensure security.

1. Right-click anywhere in the window and then choose Menu. The login dialog box is displayed.
2. Select the username from the drop-down list, enter your password, and then click Login.

5.2 Add IP Devices


Before you begin, make sure the devices are connected to your NVR via network.

5.2.1 Quick Add


Follow the wizard to the fourth step. Select the devices to add in the discovered device list, and then click **Add**.



NOTE!


After the device is added, if wrong username or password message shows in the preview window, click  in the window toolbar and enter the correct username and password.

5.2.2 Custom Add

1. Right click in the preview page, click **Menu > Camera > Camera**.
2. Click **Custom Add**, enter the IP address and other required information.
3. Check the status of camera.  means the camera gets online successfully. If the status icon is grayed out, place your mouse cursor over the icon to view the cause of error. Click the edit button to modify device information.



NOTE!

- You can also click  to add a device.
- Click **Search Segment** to search for devices in a specified network segment.

5.3 Playback

In the preview page, select the desired window, then right click and select **Playback** to play the recording of the current day.



NOTE!

- A 7*24 recording schedule is enabled by default. To set a recording schedule manually, right click and select **Menu > Storage > Recording** and then set recording type and time based on your needs.
- If you choose **Event** type recording, you need to enable the corresponding alarm function and configure alarm-triggered recording/snapshot first.

6. Web Login

Before you begin, check that your PC is connected to your NVR through network.

1. Open the browser on your PC, enter the IP address(192.168.1.30) in the address bar, then press **Enter**.
2. In the login page, enter the correct username(admin) and password(123456), then click **Login**.



NOTE!

- Install the plugin as required at first login. Close your browser during the installation.
- If you have already changed the IP address and username/password in local operation, please use them after the change.

Disclaimer and Safety Warnings

Copyright Statement

No part of this manual may be copied, reproduced, translated or distributed in any form by any means without prior content in writing from our company (referred to as us hereafter).

The product described in this manual may contain proprietary software owned by our company and its possible licensors. Unless permitted, no one is allowed to copy, distribute, modify, abstract, decompile, disassemble, decrypt, reverse engineer, rent, transfer, or sublicense the software in any form by any means.

Export Compliance Statement

Our company complies with applicable export control laws and regulations worldwide, including that of the People's Republic of China and the United States, and abides by relevant regulations relating to the export, re-export and transfer of hardware, software and technology. Regarding the product described in this manual, our company asks you to fully understand and strictly abide by the applicable export laws and regulations worldwide.

Privacy Protection Reminder

Our company complies with appropriate privacy protection laws and is committed to protecting user privacy. You may want to read our full privacy policy at our website and get to know the ways we process your personal information. Please be aware, using the product described in this manual may involve the collection of personal information such as face, fingerprint, license plate number, email, phone number, GPS. Please abide by your local laws and regulations while using the product.

About This Manual

- This manual is intended for multiple product models, and the photos, illustrations, descriptions, etc. in this manual may be different from the actual appearances, functions, features, etc. of the product.
- This manual is intended for multiple software versions, and the illustrations and descriptions in this manual may be different from the actual GUI and functions of the software.
- Despite our best efforts, technical or typographical errors may exist in this manual. Our company cannot be held responsible for any such errors and reserves the right to change the manual without prior notice.
- Users are fully responsible for the damages and losses that arise due to improper operation.
- Our company reserves the right to change any information in this manual without any prior notice or indication. Due to such reasons as product version upgrade or regulatory requirement of relevant regions, this manual will be periodically updated.

Disclaimer of Liability

- To the extent allowed by applicable law, in no event will our company be liable for any special, incidental, indirect, consequential damages, nor for any loss of profits, data, and documents.
- The product described in this manual is provided on an "as is" basis. Unless required by applicable law, this manual is only for informational purpose, and all statements, information, and recommendations in this manual are presented without warranty of any kind, expressed or implied, including, but not limited to, merchantability, satisfaction with quality, fitness for a particular purpose, and noninfringement.
- Users must assume total responsibility and all risks for connecting the product to the Internet, including, but not limited to, network attack, hacking, and virus. We strongly recommend that users take all necessary measures to enhance the protection of network, device, data and personal information. Our company disclaims any liability related thereto but will readily provide necessary security related support.
- To the extent not prohibited by applicable law, in no event will our company and its employees, licensors, subsidiary, affiliates be liable for results arising out of using or inability to use the product or service, including, not limited to, loss of profits and any other commercial damages or losses, loss of data, procurement of substitute goods or services; property damage, personal injury, business interruption, loss of business information, or any special, direct, indirect, incidental, consequential, pecuniary, coverage, exemplary, subsidiary losses, however caused and on any theory of liability,

whether in contract, strict liability or tort (including negligence or otherwise) in any way out of the use of the product, even if our company has been advised of the possibility of such damages (other than as may be required by applicable law in cases involving personal injury, incidental or subsidiary damage).

- To the extent allowed by applicable law, in no event shall our total liability to you for all damages for the product described in this manual (other than as may be required by applicable law in cases involving personal injury) exceed the amount of money that you have paid for the product.

Network Security

Please take all necessary measures to enhance network security for your device.

The following are necessary measures for the network security of your device:

- **Change default password and set strong password:** You must change the default password after your first login and set a strong password of at least nine characters including all three elements: digits, letters and special characters.
- **Keep firmware up to date:** It is recommended that your device is always upgraded to the latest version for the latest functions and better security. Visit our official website or contact your local dealer for the latest firmware.

The following are recommendations for enhancing network security of your device:

- Change password regularly: Change your device password on a regular basis and keep the password safe. Make sure only the authorized user can log in to the device.
- Enable HTTPS/SSL: Use SSL certificate to encrypt HTTP communications and ensure data security.
- Enable IP address filtering: Allow access only from the specified IP addresses.
- Minimum port mapping: Configure your router or firewall to open a minimum set of ports to the WAN and keep only the necessary port mappings. Never set the device as the DMZ host or configure a full cone NAT.
- Disable the automatic login and save password features: If multiple users have access to your computer, it is recommended that you disable these features to prevent unauthorized access.
- Choose username and password discretely: Avoid using the username and password of your social media, bank, email account, etc, as the username and password of your device, in case your social media, bank and email account information is leaked.
- Restrict user permissions: If more than one user needs access to your system, make sure each user is granted only the necessary permissions.
- Add appropriate email address information in each user configuration. The address is used when you click "Forgot password". To protect the "forgot password" process against misuse, the appropriate address for each user must be added during the initial setup.
- Disable UPnP: When UPnP is enabled, the router will automatically map internal ports, and the system will automatically forward port data, which results in the risks of data leakage. Therefore, it is recommended to disable UPnP if HTTP and TCP port mapping have been enabled manually on your router.
- SNMP: Disable SNMP if you do not use it. If you do use it, then SNMPv3 is recommended.
- Multicast: Multicast is intended to transmit video to multiple devices. If you do not use this function, it is recommended you disable multicast on your network.
- Check logs: Check your device logs regularly to detect unauthorized access or abnormal operations.
- Physical protection: Keep the device in a locked room or cabinet to prevent unauthorized physical access.
- Isolate video surveillance network: Isolating your video surveillance network with other service networks helps prevent unauthorized access to devices in your security system from other service networks.

Safety Warnings

The device must be installed, serviced and maintained by a trained professional with necessary safety knowledge and skills. Before you start using the device, please read through this guide carefully and make sure all applicable requirements are met to avoid danger and loss of property.

Storage, Transportation, and Use

- Store or use the device in a proper environment that meets environmental requirements, including and not limited to, temperature, humidity, dust, corrosive gases, electromagnetic radiation, etc.
- Make sure the device is securely installed or placed on a flat surface to prevent falling.
- Unless otherwise specified, do not stack devices.
- Ensure good ventilation in the operating environment. Do not cover the vents on the device. Allow adequate space for ventilation.
- Protect the device from liquid of any kind.
- Make sure the power supply provides a stable voltage that meets the power requirements of the device. Make sure the power supply's output power exceeds the total maximum power of all the connected devices.
- Verify that the device is properly installed before connecting it to power.
- Do not remove the seal from the device body without consulting our company first. Do not attempt to service the product yourself. Contact a trained professional for maintenance.
- Always disconnect the device from power before attempting to move the device.
- Take proper waterproof measures in accordance with requirements before using the device outdoors.

Power Requirements

- Installation and use of the device must be in strict accordance with your local electrical safety regulations.
- Use the recommended cord set (power cord) in accordance with the specified ratings.
- Only use the power adapter supplied with your device.
- Use a mains socket outlet with a protective earthing (grounding) connection.
- Ground your device properly if the device is intended to be grounded.
- Always connect the power cord to the wiring via the circuit breaker.
- Do not use an extension cord with a movable power plug.

Battery Use Caution

- When battery is used, avoid:
 - High or low extreme temperatures during use, storage and transportation;
 - Extremely low air pressure, or low air pressure at high altitude.
- Battery replacement.
- Use the battery properly. Improper use of the battery such as the following may cause risks of fire, explosion or leakage of flammable liquid or gas.
 - Replace battery with an incorrect type;
 - Dispose of a battery into fire or a hot oven, or mechanically crushing or cutting of a battery;
- Dispose the used battery according to your local regulations or the battery manufacturer's instructions.
- Personal safety warnings:
 - Chemical Burn Hazard. This product contains a coin cell battery. Do not ingest battery. If the coin cell battery is swallowed, it can cause severe internal burns in just 2 hours and can lead to death.
 - Keep new and used batteries away from children.
 - If the battery compartment does not close securely, stop using the product and keep it away from children.
 - If you think batteries might have been swallowed or placed inside any part of the body, seek immediate medical attention.

Regulatory Compliance

LVD/EMC Directive



This product complies with the European Low Voltage Directive 2014/35/EU and EMC Directive 2014/30/EU.

WEEE Directive-2012/19/EU



The product this manual refers to is covered by the Waste Electrical & Electronic Equipment (WEEE) Directive and must be disposed of in a responsible manner.

Battery Directive-2013/56/EC



Battery in the product complies with the European Battery Directive 2013/56/EC. For proper recycling, return the battery to your supplier or to a designated collection point.

Panasonic i-PRO Sensing Solutions Co., Ltd. i-PRO, Viewnetcam.com, FacePRO, Advitia, VideoInsight, Arbitrator, CloUDE, and Unified Digital Evidence are registered trademarks or trademarks of Panasonic i-PRO Sensing Solutions Co., Ltd. or Panasonic i-PRO Sensing Solutions Corporation of America in various jurisdictions. All other trademarks are the property of their respective owners.