

## Microsoft® Windows® 7 System Report with Panasonic IP products

★Symptoms may differ according to the PC environment or update from another OS .

### 1. Common restriction item for each models.

#### ■ PC environment

OS (Microsoft® Windows® 7 Professional)	Browser (Internet Explorer® 8)	
	32bit	64bit
32bit	OK	Not applicable
64bit (*)	OK	Not supported

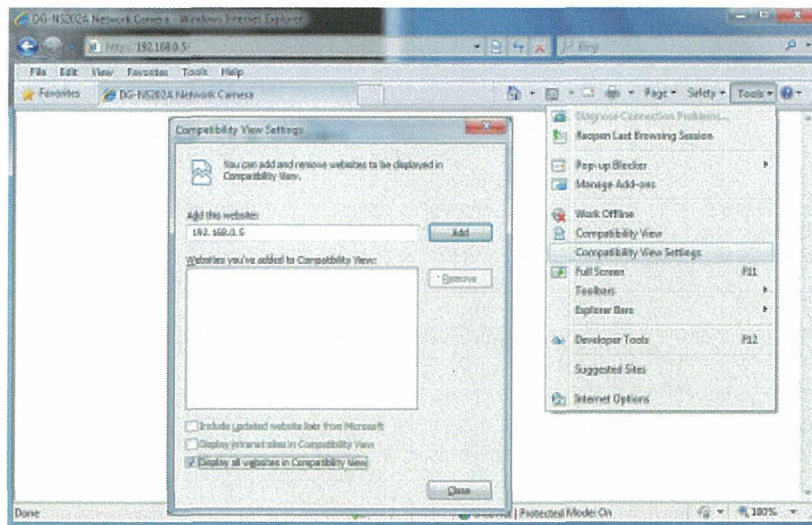
\* Please to use 32 bit version of Internet Explorer® 8 when you use Browser with 64 bit version of Microsoft® Windows® due to differences in architecture between 32 bit version and 64 bit version of IE 8.

#### ■ Restriction item

- ① IP camera will not function properly with computer in Windows® XP compatibility mode.
- ② IP camera will not function properly with 64bit version of Internet Explorer® 8.
- ③ Internet Explorer 8 must be set up for "Display all websites in Compatibility View".  
Screen layout and frame layout may not be accurate if not set for "Display all websites in Compatibility View".

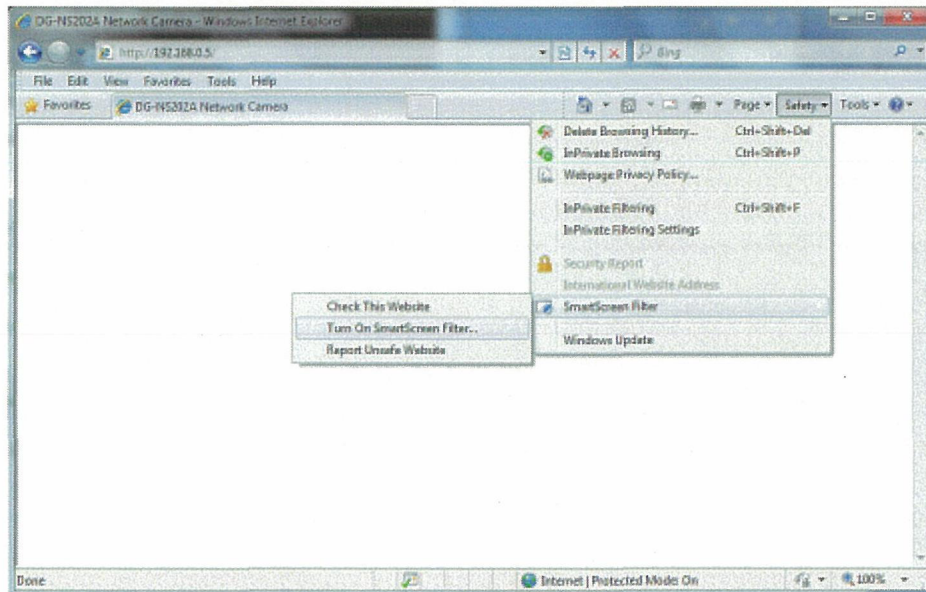
To check or set:

- (1) Click 「Compatibility View Settings」 of 「Tools」 of Internet Explorer®8.
- (2) Check 「Display all websites in Compatibility View」 with Compatibility View Settings.

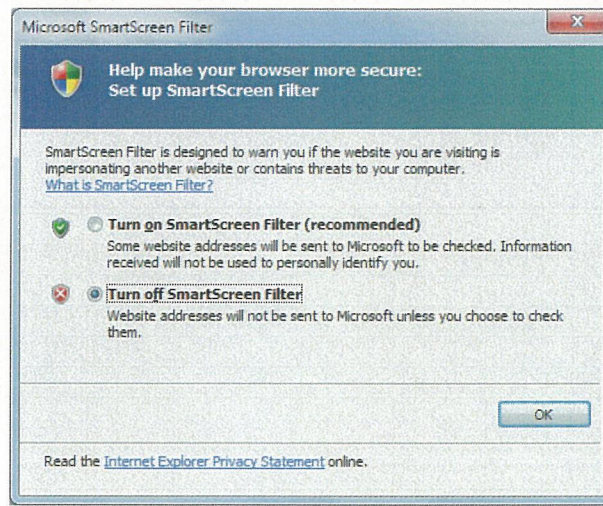


④ Please enable "Smart Screen Filter" of Internet Explorer® 8.  
 If "Smart Screen Filter" is not set, the cameras Active X Plug in may not install correctly.

(1) Select "Smart Screen Filter" and "Turn On Smart Screen Filter" of "Safety" of Internet Explorer 8.



(2) Select "Turn On Smart Screen Filter" with Microsoft Smart Screen then select "OK"



⑤ The network will be suspend when PC becomes sleep condition with Microsoft Windows 7 .  
To reload screen in case of necessity when canceled sleep.



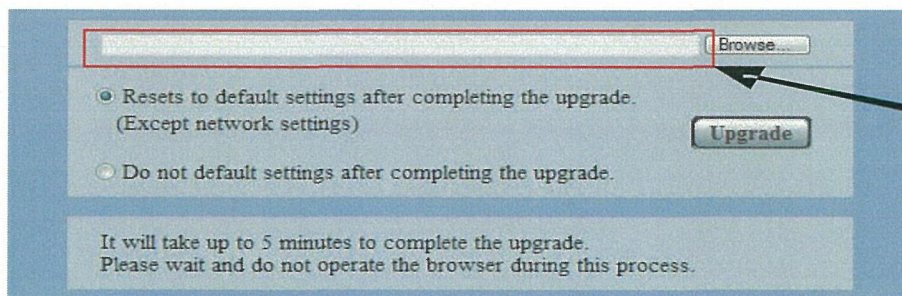
## 2. Characteristics restriction items of camera encoder

### ■ Confirmed Firmware version

NP244	:	Ver. 1.80E4
NF284	:	Ver. 1.60E4
NW484	:	Ver. 1.60E5
NS202A	:	Ver. 2.70P7
NS950/NW960 Series	:	Ver. 1.60E3
NF302/ NP304	:	Ver. 1.60E4
NP502/ NW502	:	Ver. 1.02
NP1000 Series	NTSC	: Ver. 1.25P0
	PAL	: Ver. 1.25E0
NT304 / NT314	NTSC	: Ver.1.32.12
	PAL	: Ver.1.32.12

### ■ Restriction item

- ① Unable to input character directly to the directory column with the upload screen of firmware.
- <Applicable Model> All IP cameras and Encoders.
- <Evasion > Press Refer, button ⇒ Selection file from dialog of the file selection.  
(This issue of specification changes occurred by Internet Explorer ® 8.  
Please understand because it can not correspond in our company)

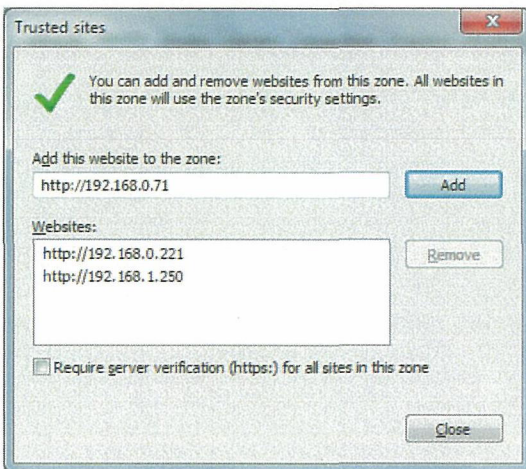
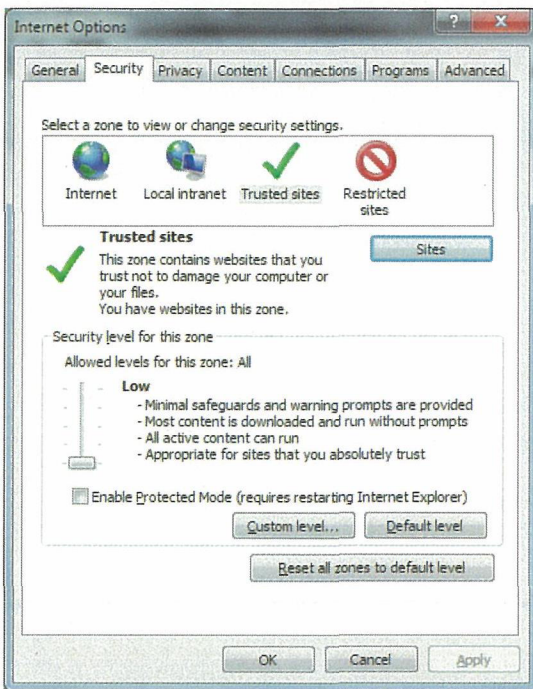


Unable to input character directly.

- ② Sometimes displayed dialog "User Account Control" when I install the plug-in software for the display.
- <Applicable Model> All IP cameras and Encoders.
- <Evasion> Selection "YES" of dialog.
- ③ Sometimes occurs like the following phenomenon.
- Unable to one shot (One still picture) PRINT.
  - Unable to download recorded image from SD memory card.
- <Applicable Model> All IP cameras and Encoder.
- <Evasion> Please add the setting of security to register with the trust completion site.

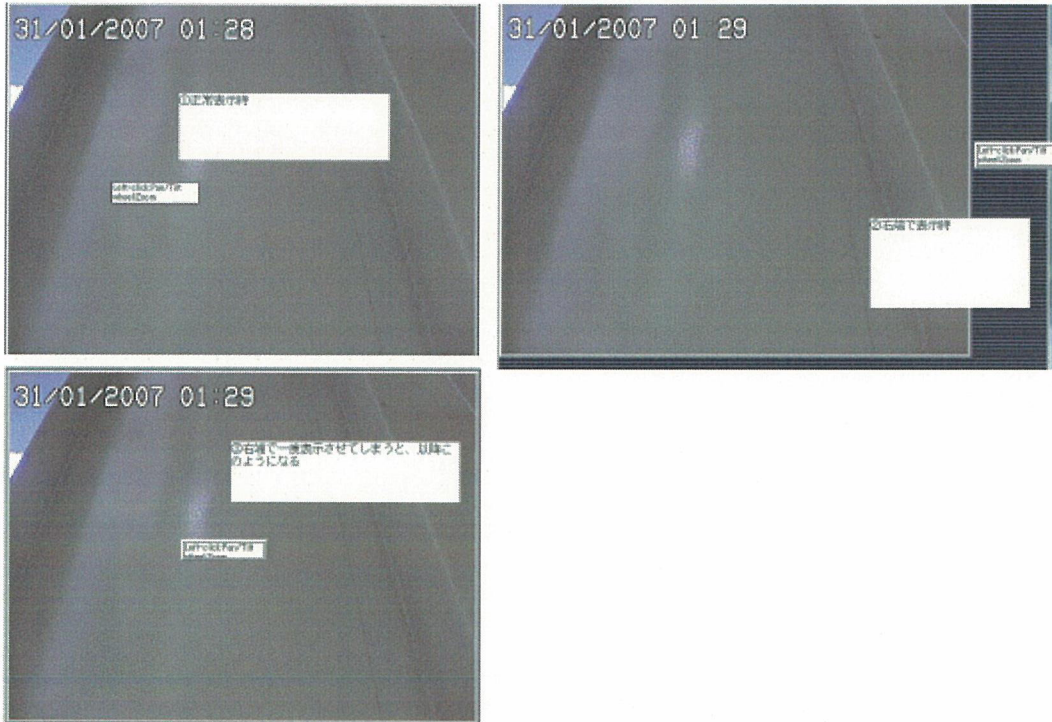
- (1) Triggered Internet Explorer and clicked "Tools"
- (2) Clicked "Internet Options"
- (3) Clicked "Security" and select "Trusted sites" (Refer to following)
- (4) Clicked "Sites" and "Add" URL of camera.

At this time, please confirm that 'Require server verification (https :) for all sites in this zone' of a check is coming off .

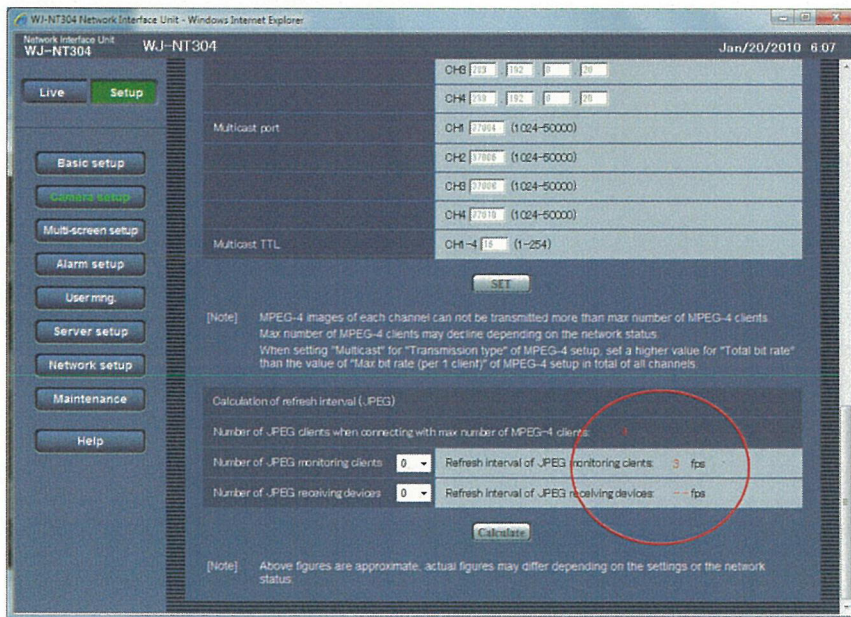




- ④ A part of letter on the live picture sometimes closes chip for the chip help display.  
 <Applicable Model> All IP cameras and Encoder.  
 \* Confirmation of a phenomenon in the Russian, Polish.  
 <Evasion> No change.



- ⑤ There is the item that the display has deviated.  
 <Applicable Model> NT304/NT314  
 <Evasion> No change.



⑥ Unable to version up may be with Internet Explorer® 8.

<Applicable Model> NP1000 Series

<Evasion> It is able to go up the version if you could set up it in accordance with the following procedure.

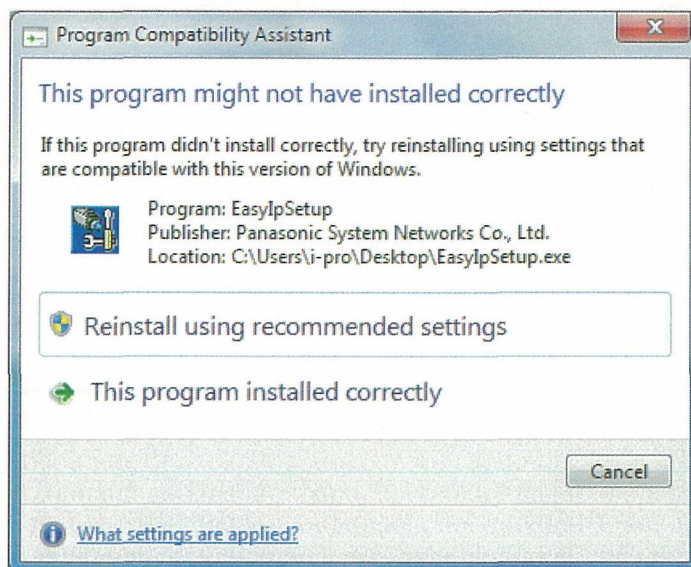
[1] Internet Options→Security→Custom level...→

[2] “Include local directory path when uploading files to a server” effectively it does.

⑦ The following injustice message has been displayed only to the 1st time after this tool completion after installation in the IP easy setting tool.

<Applicable Model> Easy IP Setup tool.

<Evasion> Please select “This program installed correctly” at the time of the following message display.





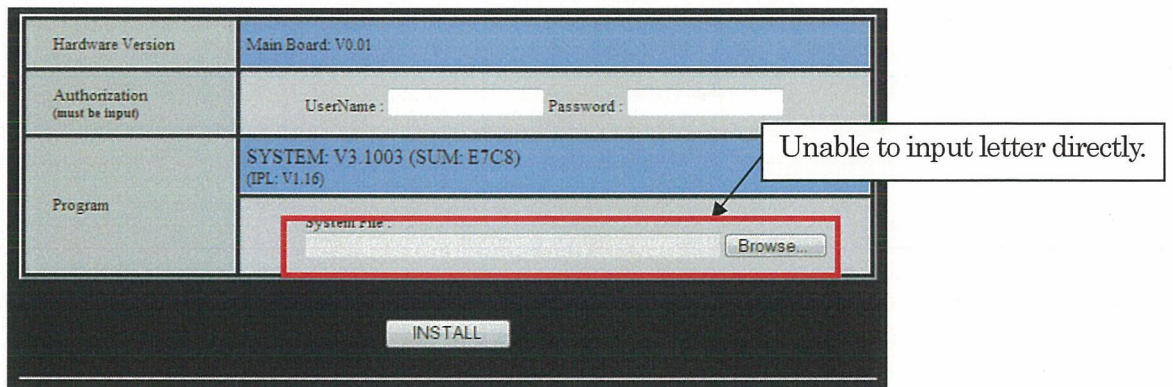
### 3. Characteristics restriction items of Recorder.

■ Confirmed Firmware version

ND200 Series	:	V3.0009
ND300 Series	:	V5.0007
ND400 Series	:	V2.0100
HD220 Series	:	V1.2200
HD300 Series	:	V3.4201
HD616K, HD716K	:	V1.0200
RT208 (HD88) Series	Main Unit	: V1.35.01
	Client	: V1.3.6.0
RT416 Series	Main Unit	: V1.63.10
	Client	: V1.61.10

■ Restriction item

- ① Unable to input direct letter to the directory column with the upload screen of firmware.  
 <Applicable Model> ND200/ND300/ND400/HD300/HD616K/HD716K Series  
 <Evasion> Reference button ⇒ I would appreciate the operation that selects the file from the dialog of the file selection.  
 (This issue of specification changes occurred by Internet Explorer ® 8.  
 Please understand because it can not correspond in our company)



- ② "User Account Control" the dialog sometimes displayed when install the plug-in software for the display .  
 <Applicable Model> All Recorder.  
 <Evasion> Please select "Yes" inside the dialog.
- ③ Two browsers have got able to display it in RT416.  
 \* The second is closed after displayed "Overlay Create Error" when it tries to display it 2 or more pieces in case of Windows XP.  
 <Applicable Model> RT416  
 <Evasion> No change.



④ Transforms a part of letter of the alarm information display (part of the alarm cause display) in WJ-RT208 (WJ-HD88).

\* Confirmed with English OS.

<Applicable Model> WJ-RT208 (WJ-HD88)

<Evasion> No change.

⑤ It becomes a black picture when it returned it to a usual screen after displayed full screen Viewer in RT208 (HD88).

<Applicable Model> WJ-RT208 (WJ-HD88)

<Evasion> Restart Viewer.

#### 4. Characteristics restriction items of Decoder.

##### ■ Confirmed Firmware version

GXD400 :V2.0027

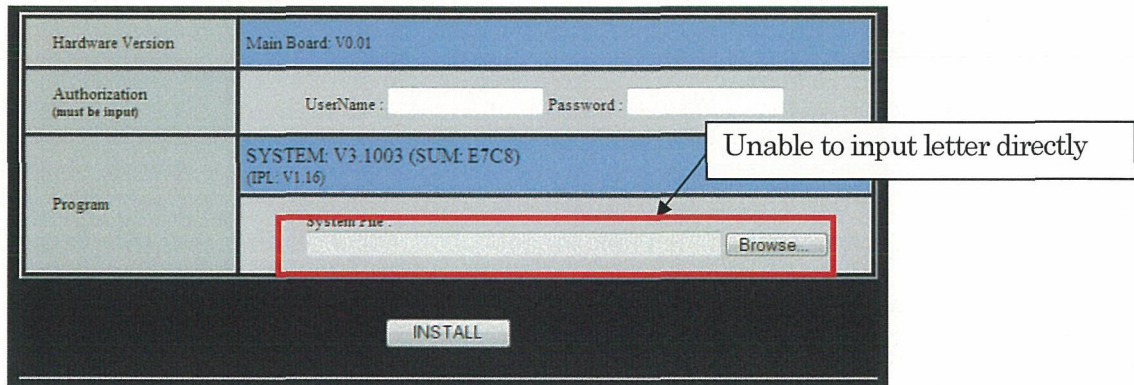
##### ■ Restriction item

① Unable to input letter directly in the directory column with the upload screen of firmware.

<Evasion> Reference button ⇒ Reference button ⇒ I would appreciate the operation that selects the file from the dialog of the file selection.

(This issue of specification changes occurred by Internet Explorer ® 8.

Please understand because it can not correspond in our company)



## 5. Characteristics restriction items of Matrix Switcher(Setup Application)

### ■ Confirmed Firmware version

SX650            Main Unit            : V3.30.01  
                         Setup Application : Ver3.1

### ■ Restriction item

- 1 Nothing other special restrictions except common restriction items of each models.

## 6. Characteristics restriction items of display software.

### ■ Confirmed Firmware version

ASM100                            :V5.00  
ASM10                             :V2.00

### ■ Restriction item

- 1 Nothing other special restrictions except common restriction items of each models.

End of Microsoft® Windows® 7 System Report with Panasonic IP products.

Security and Sound Systems BU  
Panasonic System Networks Co, Ltd.