



i-Pro management software for multi-recorder multi-site system

Key Features: WV-ASM100/WV-ASM100L

- Up to 100 recorders, 64 encoders and 256 directly connected cameras can be registered. Up to 6,400 cameras registered in the recorders and 256 cameras registered in the encoders are automatically registered in the WV-ASM100 (the number of the cameras depends on the recorder and encoder).
- Live images can be received directly from the camera/encoder or via the recorder enabling flexible network design.
- Multi-Monitor option enables simultaneous use of Operation Display (1 / 4 / 9 / 16 split), Live Display (1 / 4 / 9 / 16 split) and Map Display each on a dedicated monitor. Single or two monitor operation is also available. A total of 20 screens can be displayed with the simultaneous use of the Operation Display and the Live Display at a time.*1
- Up to 16x 30 ips/camera images can be displayed in H.264 1.5 Mbps mode (VGA: Normal quality mode) or MPEG-4 2 Mbps mode (VGA: Normal quality mode, QVGA: High quality mode, depending on the camera and camera setup).
- Up to 400 camera groups: Cameras and multiscreen mode for the Operation Display can be programmed and called up by manual or sequence operation.
- Image resolution dynamically changes depending on the screen mode: VGA for Quad screen, QVGA for 16 split screen, enabling optimum network usage (depending on the camera model).
- Panasonic camera control: Pan/Tilt, Zoom, Focus, Brightness, Preset position call and program (up to 256), Auto mode, AUX 1 ~ 3, Click Centering, Wheel Zoom (depending on the camera model)
- A camera, a group or a sequence can be called up on the Operation Display by their ID with the optional system controller WV-CU950.*1 The camera displayed in the active window can be controlled by the system controller. Recorder playback operation can also be made by the system controller with Jog/Shuttle.
- Alarm notification: A pop-up alarm message is displayed.
- Individual alarm reset is possible.
- Operation Display, Live Display, and Map Display reacts correspondingly with the alarm.
- Displays the present alarm log in red.
- When an alarm occurs, the monitor changes into the map automatically showing where the alarm happened.
- Illustrated camera, alarm and recorder icons for intuitive operations
- Up to 64 camera icons can be freely positioned on a map with alarm status indicated by the color of the icons.*1
- Recorded images of up to 64 cameras (in case with WJ-ND400) can be downloaded by one operation. Downloaded images can be viewed by the viewer software (provided).

- Sophisticated user management: User authentication with time limited password, 5 user levels, User-Camera View/Control partitioning in conjunction with recorder's user management function, Up to 32 user registrations
- System logs can be saved in CSV format. Operation logs can automatically be erased when specified time has passed (31 / 92 / 184 / 366 days).
- Audio from a camera can be heard and the operator voice can be transmitted to the camera's audio output through the network (single channel at a time, full/half duplex depending on the camera).
- Recorded audio with the WJ-ND200 or WJ-ND400 can be played back (single channel at a time).
- Video Analytic functions of the WJ-NT314 such as intruder detection and object abandonment/removal detection can be displayed.*1
- When used with WJ-ND400, VMD search can be operated.

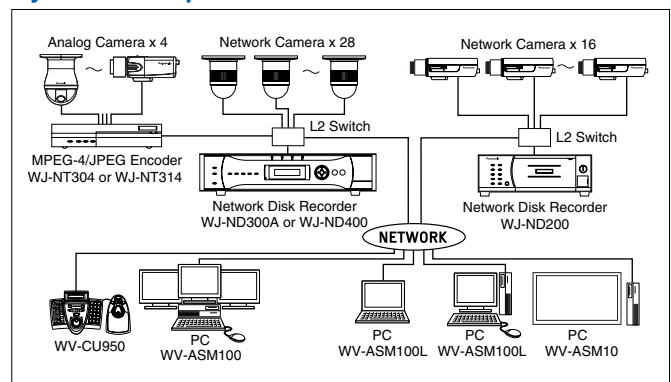
*1 Not available for WV-ASM100L

Optional Accessory

Ethernet System Controller
with 3D-Joystick & Jog/Shuttle
WV-CU950
(For WV-ASM100 only)



System Example

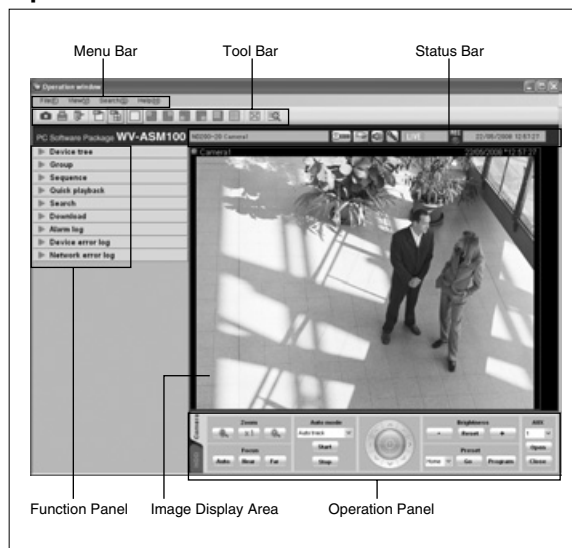


Specifications: WV-ASM100/WV-ASM100L

Supported Equipment	Supported Cameras	Direct: Panasonic i-Pro series Network cameras except WV-NM100 Via Recorder: Panasonic i-Pro series Network cameras, BB series (specific models) and Axis® (specific models)
	Supported Recorders	WJ-ND400 series, WJ-ND300 series, WJ-ND200 series, WJ-HD716/616, WJ-HD300A series, WJ-RT416 series
	Supported Encoders	WJ-NT304, WJ-NT314
	Supported Controller*1	WV-CU950
	Supported Image Format	H.264, MPEG-4 (i-Pro series except WV-NM100), M-JPEG
	Supported Image Resolution	2,048 x 1,536, 1,280 x 960, 960 x 720, 640 x 480, 320 x 240 (depending on the source equipment)
	Max. Recorder Registrations	100, Cameras registered in the recorders are automatically registered in WV-ASM100/WV-ASM100L
	Max. Encoder Registrations	64, Cameras registered in the encoders are automatically registered in WV-ASM100/WV-ASM100L
	Max. Camera Registrations	Camera direct: 256, Via Recorder: 6,400 (in case with WJ-ND400), 3,200 (in case with WJ-ND300A), Via Encoder: 256 (in case with WJ-NT304, WJ-NT314)
	Camera Control (depending on the Camera)	Pan/Tilt, Zoom, Focus, Brightness, Preset position call and program (up to 256), Auto mode (SEQ, SORT, AUTO PAN, PATROL, AUTO TRACK), AUX 1 ~ 3, Click centering, Wheel zoom, Drag and zoom
GUI Function	Recorder Control (depending on the Recorder)	REC, PLAY, Rev PLAY, Pause, Stop, FF (up to 96x), REW (up to 96x), Prev Record, Next Record, Prev Image, Next Image, Skip (up to 60 min.), Rev Skip, (up to 60 min.) Text
	Event Search	Target: Recorder (Camera) / Group / Map*1, Search criteria: Time date, Event type, Text
	VMD Search	In case with WJ-ND400
	Multiscreen Mode	Spot / Quad (A-D) / 9 split / 16 split
	Sequence Display	10 programs, 64 steps/pattern, Spot / Quad / 9 split / 16 split Dwell time: 3s / 5s / 10s / 15s / 20s / 25s / 30s / 35s / 40s / 45s / 50s / 55s / 1min
	Display Performance	30 ips x 16 screens at H.264 1.5 Mbps, 30 ips x 16 screens at MPEG-4 2 Mbps
	Multi-Monitor*1	Up to 3 monitors (Operation / Live / Map), Up to 20 cameras can be displayed (Operation-4, Live-16)
	Camera Group Display	Up to 400 groups with 16 alphanumeric titles
	Number of Maps*1	Up to 100 maps (JPEG or Bit map), Link: 64 cameras and 20 maps / map
	Image Download	Recorded images of up to 64 cameras (in case with WJ-ND400) can be downloaded. Manual download only. Viewer software can be extracted from the main software.
	Camera Title Display	On the GUI, Up to 16 characters
	Clock Display	On the GUI, Time: 12H/24H, Date: 5 formats (When the image comes from the recorder)
	Alarm Source	Panasonic alarm protocol
	Alarm Control	Reset, Auto reset (OFF / 10s / 20s / 30s / 1min / 5min)
	Alarm Action	Up to 16 alarm images can be displayed on the live monitor. Corresponding camera icon on the map lights up. Alarm message on the GUI and buzzer.
	Digital Zoom	Up to 4 times
	Text Attachment	Free comment can be attached for each record and reviewed at later time. Up to 200 characters
	System Log	Operation (100,000), System (1,000), Network error (1,000), Recorder error (1,000), Alarm (30,000)
	Recorder Log Download	Operator access, Network error, Error, Event
	User Management	Registration: Up to 32 users + Administrator, ID: 4-14 digit, PW: 4-8 digit, User level: 5 levels (Programmable), PW time limit: OFF / 31 / 92 / 184 / 366 days, Auto login: ON / OFF, Recorder login user: Up to 16 users
General	Partitioning	User - Camera (View only, View & Control, No Access) in conjunction with recorder's user management
	Security Method	User authentication (ID and Password), Host authentication (IP address), Alteration detection, Hardware key (USB dongle)
	System Setup	Setup page in English, French, Italian, Spanish, German, Russian, Chinese
	GUI Language	English, French, Italian, Spanish, German, Russian, Chinese
	Supported OS	Microsoft® Windows® XP Home SP3, Microsoft® Windows® XP Professional SP3, Microsoft® Windows Vista® Business SP2 32bit/64bit, Microsoft® Windows® 7 Professional 32bit/64bit The language of the OS must be same as selected GUI language.
	Required PC	CPU: Intel® Core™ 2 Duo 2.66 GHz or faster, Intel® Core™ 2 Quad Q9650 or faster, Intel® Core™ i7-920 or faster RAM: 1 GB or more, 3 GB or more (When operating H.264 images) VRAM: 128 MB or more (64 MB min.), Microsoft® DirectX® 9.0c or later
	Network	Proxy HTTP proxy supported (IP address and port No.) FTP Passive/Active
	Viewer	Playback Control Play, Rev Play, Pause, FF, REW, Prev Record, Next Record, Prev Image, Next Image
	Software	Additional Functions Alteration detection, Save as JPEG, Two times zoom, Print

*1 Not available for WV-ASM100L

Operation Window



Software Comparison Chart

Functions		WV-ASM100 (Ver. 6.0) Management Software	WV-ASM100L (Ver. 6.0) Management Software - Light
Main Functions / Description		Live / Playback / Control	
Supported Devices	Camera	Direct i-Pro series*1	
		Via Recorder	i-Pro series*1, Axis*2, BB series*2
	Recorder	NVR WJ-ND400 series, WJ-ND300 series, WJ-ND200 series DVR WJ-HD716/616, WJ-HD300A series, WJ-RT416 series	
	Encoder	WJ-NT314, WJ-NT304	
	Controller	WV-CU950	No
Max. Devices	Camera	Direct 256 Via Recorder 6,400 (with WJ-ND400 series) 3,200 (with WJ-ND300 series) Via Encoder 256 (with WJ-NT314/304)	
	Recorder	100	
	Encoder	64	
	Controller	1	No
	AVMD Display (Frame and Tracking Line)	Yes	No
Multiple Monitors Supported		Yes (Up to 3 monitors: Operation / Live / Map)	No
Map Function		Yes	No
Audio		Yes (Live: 2-way, Playback: 1-way)	
Event Search (T&D, Event type etc.)		Yes	
VMD Search		Yes (with WJ-ND400 series)	No
Image Download		Yes	

*1 Except WV-NM100

*2 Specific Models only. Also, JPEG only is supported and camera control is not supported.

Trademarks and registered trademarks

- Microsoft, and Windows are registered trademarks of Microsoft Corporation in the U.S. and other countries.
- Axis is a registered trademark of Axis Communications AB.
- Intel and Pentium are registered trademarks of Intel Corporation.
- "Super Dynamic", "SDI", "SDII", "SDS", "SDSLink" and "i-Pro" logos are trademarks or registered trademarks of Panasonic Corporation.

Important

- Panasonic recommends a dedicated PC to prevent installation errors and to keep best performance.
- Safety Precaution: carefully read the operating instructions and installation manual before using this product.
- Panasonic can not be responsible for network performance and/or other manufacturer products that reside on the network.
- When remote monitoring, please pay attention to the network design. For details, please contact your local Panasonic sales representatives.

- All TV pictures are simulated.
- Weights and dimensions are approximate.
- Specifications are subject to change without notice.
- These products may be subject to export control regulations.
- All product pictures are NTSC models.

DISTRIBUTED BY:

Panasonic®

<http://panasonic.net/security/>

Printed in Japan (2A-006JL)