

# Precautions when using the WV-ASM100 with the WJ-RT416

## 1. About this PDF manual

This PDF manual contains noteworthy descriptions for an administrator when using the digital disk recorder WJ-RT416 (hereinafter referred to as RT416) with the software package WV-ASM100 Series. This PDF manual contains only the descriptions about model-specific operations when managing the RT416. Refer to the operating instructions (PDF) and the setup instructions (PDF) for basic operations of this software with other compatible devices.

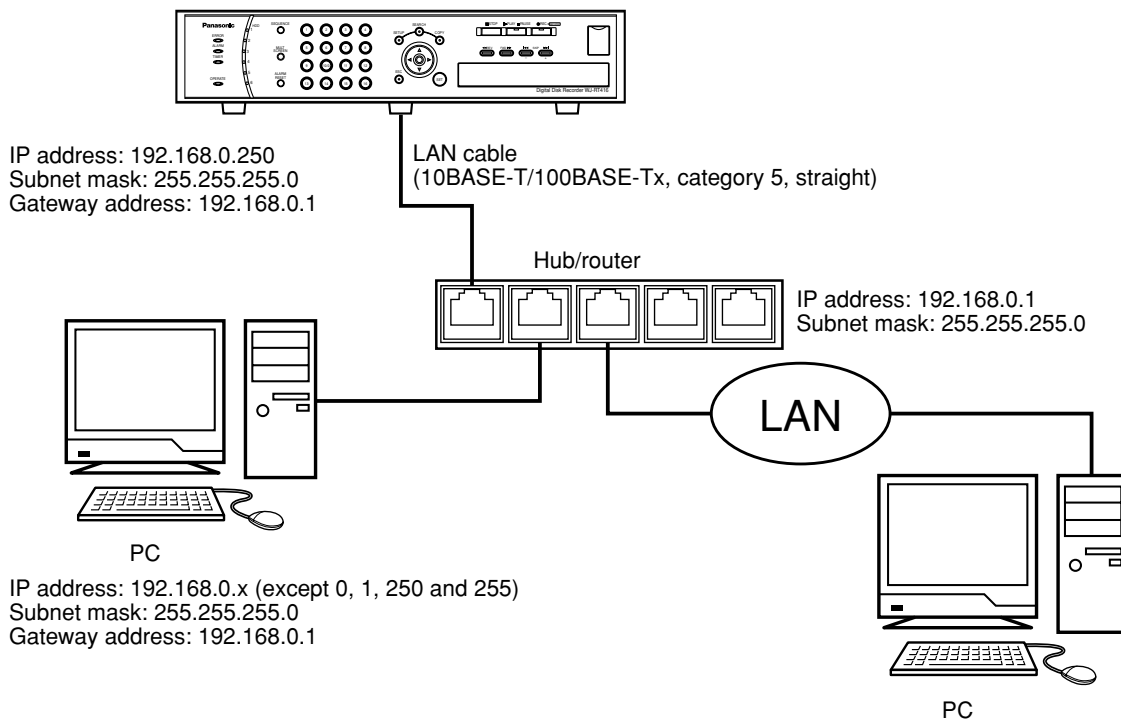
The descriptions in the following pages are based on the assumption that Microsoft® Windows® XP Professional runs on a PC.

Operation windows may not be the same as those appearing on the pages when a different OS is used or different settings are applied.

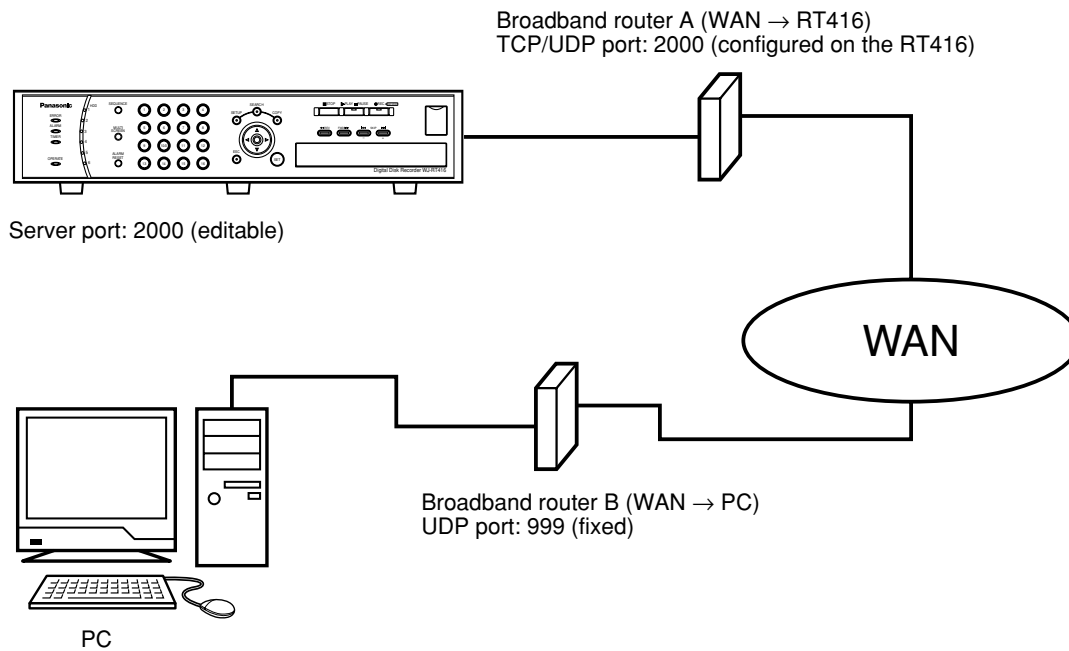
When using other OS, refer to the operating instructions of the respective OS.

## 2. System configurations

### 2.1. System configuration (LAN)



## 2.2. System configuration (WAN)



## 3. About PC environment

### 3.1. About the OS

When using this software on Microsoft® Windows Vista® Business SP2 (64-bit) or Microsoft® Windows® 7 Professional (64-bit), it may take several minutes until pausing playback is canceled.

### 3.1. With a multi-monitor system

When using this software on a PC with a multi-monitor system, black noise may be displayed when displaying live images on a monitor other than the primary monitor.

It is recommended to not use a multi-monitor system with this software.

### 3.2. With a screen saver

When a 3D screen saver is activated during live image display, this software may close unexpectedly due to an error.

It is recommended to not use a 3D screen saver with this software.

## 4. Live image display/Playback

### 4.1. When displaying live images

Live images from up to 16 cameras per RT416 can be displayed.

- \* When displaying live images from 5 cameras or more, live images from all cameras will be refreshed at the refresh interval set for the RT416. Refer to the operating instructions of the RT416 for how to configure the refresh interval.

## 4.2. Graphic performance for live image display

It is impossible to simultaneously display live images from four or more RT416s on a 16-screen.  
When trying to do so, refresh interval of live images may become slow or operation of this software may become heavy.  
To display live images from four or more RT416s, it is recommended to display them on a 9-screen.

## 4.3. When playing images

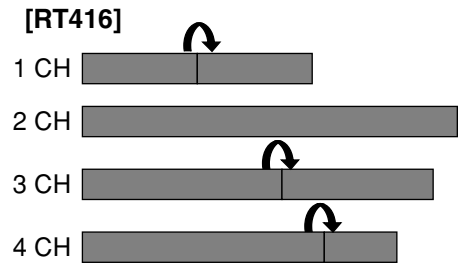
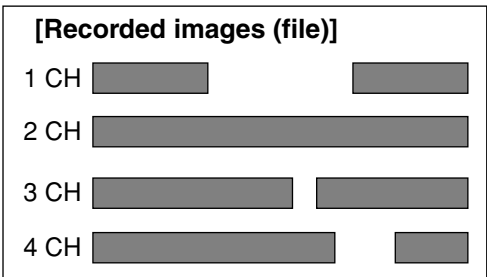
Recorded images of up to 4 cameras per RT416 can be played.  
Playback of recorded images is available by only a single user per RT416.

**Notes:**

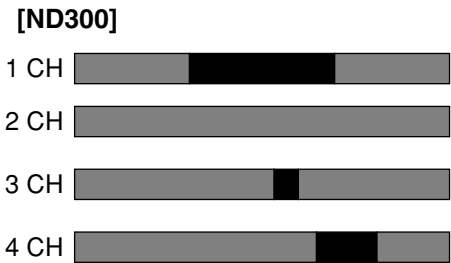
- When starting playback, live images being monitored by other users will be refreshed at the refresh interval set for the RT416.
- When playback of the latest recorded images ended, playback of the oldest recorded images will start.
- When starting playback of the other recorded images, playback speed will automatically set to 1x. (The adjusted playback speed will be reset to x1.)
  - \* Even when recorded images are a series of images, recorded images have been divided into files according to the "Time Per File" setting on the "Advanced Setup" page of "Common Setup" of the RT416.

## 4.4. When displaying images on a multi-screen

Since the RT416 plays recorded images while skipping blank parts of recorded images, playback synchronization on this software may be not exactly performed when using with the other compatible recorders.



Blank parts of recorded images will be skipped.



Blank parts of recorded images will be displayed as a black screen and synchronization will be held.

**Note:**

It is impossible to play recorded images on a 9-screen or a 16-screen.  
When trying to do so, playback on the RT416 will stop and black screen will be displayed.

## 5. Required settings when using the RT416

When using the RT416, configure the required settings as follows.

### Step 1

#### Exceptional settings of Windows Firewall

It is necessary to add the following programs to the exception list of Windows Firewall.

- asm100ope.exe
- asm100live.exe
- asm100set.exe
- asm100srv.exe
- sqlservr.exe
- sqlbrowser.exe

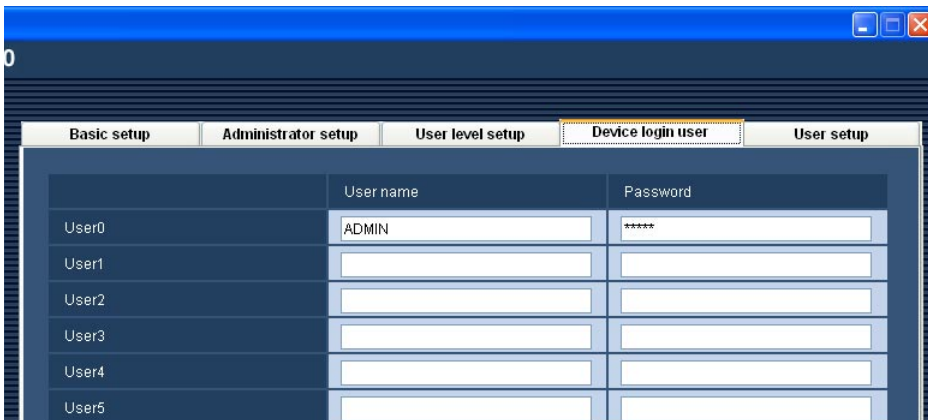
Refer to the setup instructions (PDF) of the WV-ASM100 for further information.

### Step 2

#### Set the password of the device login user

It is necessary to set the password of the device login user using the setup software to log in to the devices.

- ① Click the [User mng.] button, and then click the [Device login user] tab to display the "Device login user" page.



	User name	Password
User0	ADMIN	*****
User1		
User2		
User3		
User4		
User5		

- ② Enter the password.

---

#### Notes:

- The password should be the same as the one set for "Manager" of the RT416.
  - The default password of the "User 0" is different from the default password of "Manager" of the TR416 as follows:
    - "Manager" of TR416: 12345678
    - "User 0": 12345Change a password of either.
  - It is necessary to complete the "User name" field even though the entered user name may not be used.
  - The same user name and password need to be registered with all the devices connected through this software.
- 

- ③ Click the [Set] button.

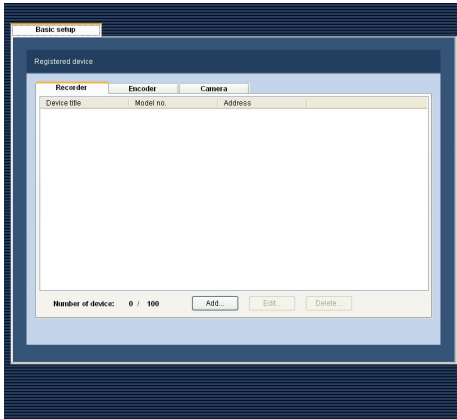
- ④ Restart the setup software.

### Step 3

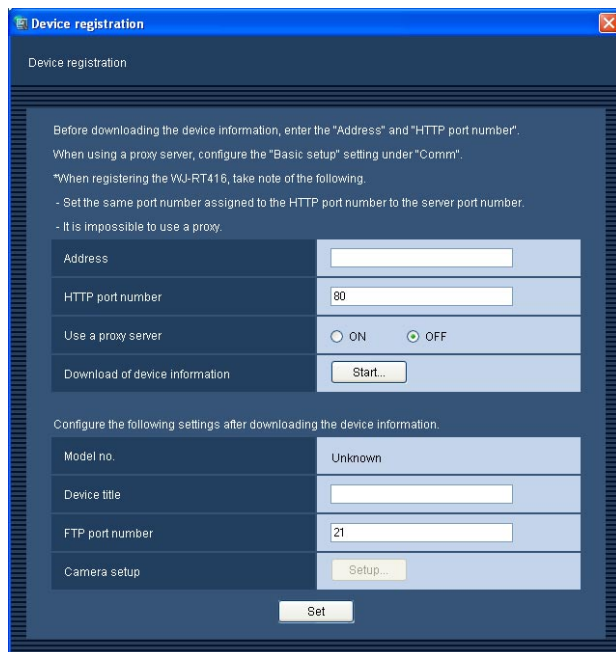
#### Register the RT416

Register the RT416 as follows.

- ① Click the [Device mng.] button, and then click the [Recorder] tab to display the "Registered device" page.



- ② Click the [Add...] button to display the "Device registration" window.



- ③ Complete both fields of "Address" and "HTTP port number", and confirm that "OFF" is selected for "Use a proxy server".

---

#### Notes:

- Enter the number set for "Server Port" on the setup menu of the RT416 (default: 2000) for "HTTP port number".
  - It is impossible to use a proxy server.
- 

- ④ Click the [Start...] button.

---

#### Note:

The camera title cannot be obtained from the RT416.

---

- ⑤ When the registration succeeded, click the [Set] button after completing both fields of "Device title" and "FTP port number".

## 6. Restrictions

When using this software with the RT416, the following operations will be restricted. Read these restrictions before operating this software with the RT416. Refer to the provided "Available function list for each compatible device" (PDF) for availability of each function.

### 6.1. Operation window


#### 6.1.1. Status bar

Function	Restriction
ALM (display/reset)	<ul style="list-style-type: none"><li>Both alarm action and error action will be reset at the same time.</li><li>Depending on the network traffic, statuses may not be the same.</li></ul>
ERR (display/reset)	<ul style="list-style-type: none"><li>Both alarm action and error action will be reset at the same time.</li><li>Depending on the network traffic, statuses may not be the same.</li></ul>
LIVE/PLAY/Step 1-7	<ul style="list-style-type: none"><li>Depending on the network traffic, statuses may not be the same.</li><li>The playback speed will not be displayed.</li></ul>
REC indicator (during recording)	Depending on the network traffic, statuses may not be the same.
Time and date	An asterisk "*" to be displayed with time and date when the daylight saving time is applied will not be displayed even during the summertime.

#### 6.1.2. Information display area

Function	Restriction
REC indicator (during recording)	Depending on the network traffic, statuses may not be the same.
Time and date	An asterisk "*" to be displayed with time and date when the daylight saving time is applied will not be displayed even during the summertime.

#### 6.1.3. Function panel

Function		Restriction
Device tree		When the RT416 is online,  will be displayed. * Even when the RT416 becomes offline, the online icon will not turn to the offline icon.
Sequence		When "Sequence dwell time" is set less than 15 seconds, images may sometimes not be displayed.
Quick playback	Go to last	Images recorded 15 minutes ago from the current time of the PC's clock will be displayed.
Alarm log	Alarm log list	An asterisk "*" to be displayed with time and date when the daylight saving time is applied will not be displayed even during the summertime.
Device error log	Device error log list	An asterisk "*" to be displayed with time and date when the daylight saving time is applied will not be displayed even during the summertime.

#### 6.1.4. Camera operation panel

Function		Restriction
Auto mode	Auto track	Depends on the auto mode settings of the connected analog camera.
	Auto pan	Depends on the auto mode settings of the connected analog camera.
	Preset sequence	Depends on the auto mode settings of the connected analog camera.
	Sort	Depends on the auto mode settings of the connected analog camera.
	Patrol	Depends on the auto mode settings of the connected analog camera.
Pan/tilt		Compatible only with Panasonic cameras.

#### 6.1.5. Playback operation panel

Function	Restriction
Fast playback (FF)	The fast playback speed will be fixed at 4x.
Reverse playback (REV PLAY)/Fast reverse playback (REW)/Reverse frame by frame playback (PREV IMAGE)/Skip (NEXT RECORD)/Reverse skip (PREV RECORD)	Recorded image will be paused.

#### 6.1.6. Search window

Function		Restriction
REC event	Schedule	This function will work as "Timer recording" of the RT416.
Search result list		<ul style="list-style-type: none"><li>• It is impossible to cancel during the search process.</li><li>• The oldest recording event will be the first to be searched.</li></ul>

#### 6.1.7. Alarm notification window

Function	Restriction
[Play] button	<ul style="list-style-type: none"><li>• The [Play] button will not be displayed.</li><li>• It is impossible to play recorded images using a system controller.</li></ul>

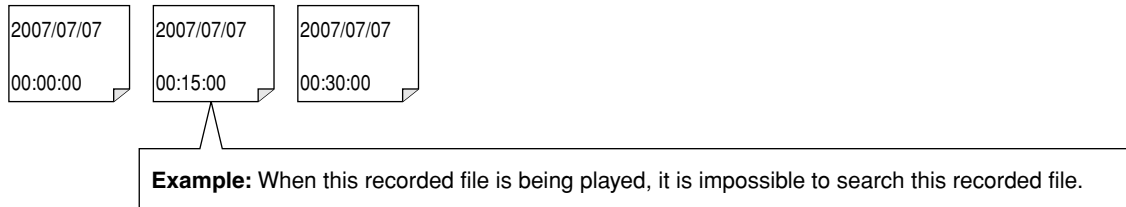
### 6.2. Live window

It is impossible to display live images.

## 7. Other restrictions

### 7.1. Operation relating to recorded files

It is impossible to search/play recorded files simultaneously when they belong to the RT416.



- When searching for files recorded within the specified time range during playback, playback will start from the start point of the next recorded file.
- When playing files recorded within the specified time range to be searched, it will not be displayed in the search result list on the "Search" window.

### 7.2. Wait time of network disconnection

#### ■ Stop live image display/playback

It is impossible to operate this software for some time when stopping live image display or playback at the network disconnection.

### 7.3. When the processing load of the RT416 is heavy

When the RT416 frequently sounds an alarm, the amount of data to be delivered is large, or two or more pieces of this software simultaneously connect to the RT416, the following phenomena may occur.

- A connection error occurs, and login is not allowed. Or, establishment of connection requires considerable time.
- There is a channel with which no live image is displayed.
- There is a channel with which no playback image is displayed.
- Black screen is displayed during playback control.
- The performance of this software becomes lower, which causes difficulty in operating this software.

If any of the phenomena listed above occurs, try the measures described below. The phenomena may be solved.

- Decrease the number of clients that are simultaneously connected to the RT416.
- Change the setting so that the Panasonic alarm protocol notification of the RT416 is not transmitted.