

New functions and addendum

- This document contains descriptions of how to set the new functions and their restrictions. Please refer to the content of this document for information on the new functions. It is recommended to read this document while referring to the Operating Instructions provided with this product together.
- In this document, the Panasonic 360° network camera (WV-SFN480 and WV-SFV481) is described as the WV-SFV481 series.

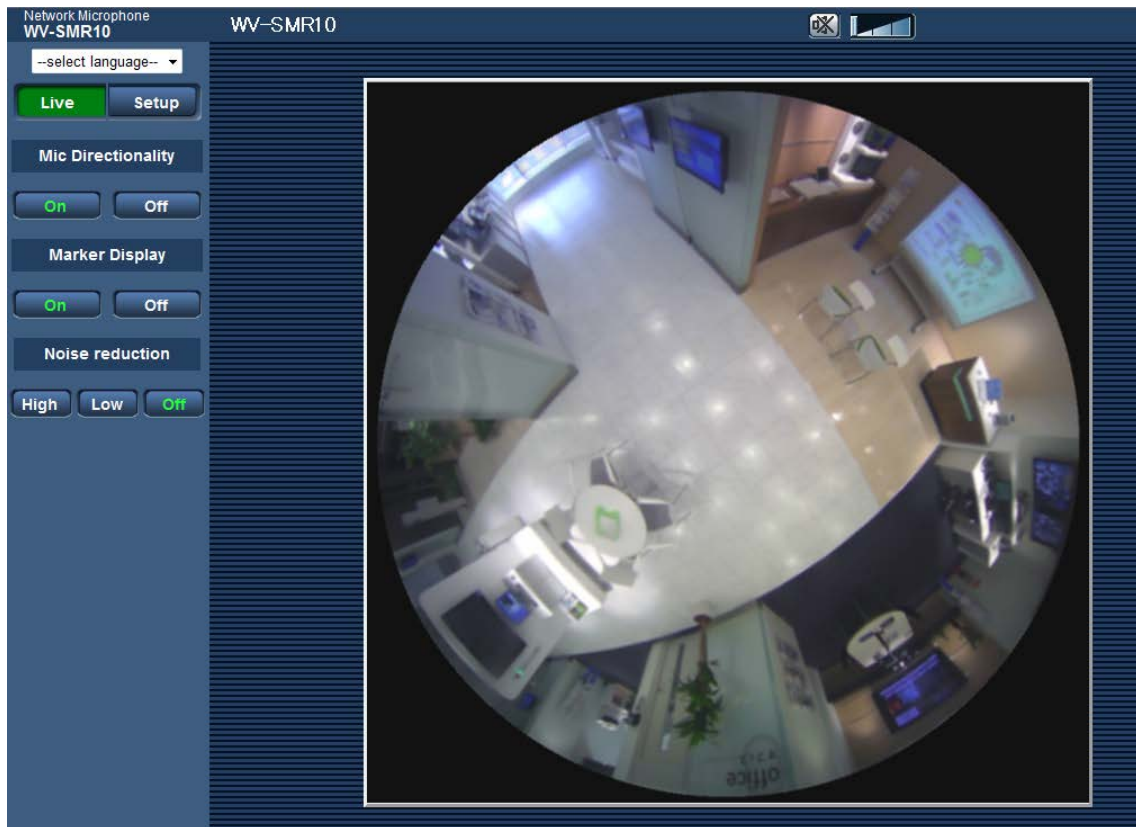
Due to software upgrade, the following functions have been added and changed to this product.

• Firmware Ver.1.10

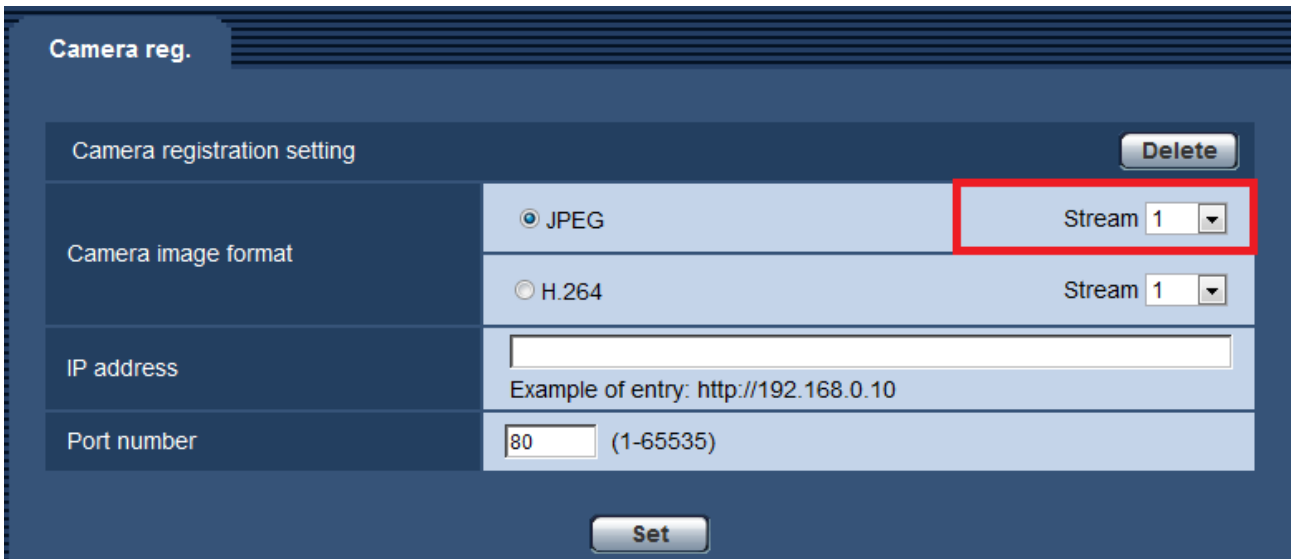
No.	Functions	Applicable screen (Page)	Page
1	Support for WV-SFV481 series ("Live" page)	Live	3
2	Support for WV-SFV481 series ("Camera reg." page)	Camera reg.	4
3	Changes to the "Audio cursor" function	Live	4
4	Addition of the "Noise reduction" function	Live	5
5	Addition of the "Live page (Initial setting)" function	Audio setup	6
6	Addition of a function used to reconnect to the camera after failing to connect to the camera	Live	7
7	Addition of a maximum segment size setting for HTTP	Network settings	8
8	Changes to the "Time zone" function	Basic screen (Basic settings)	9

1. Support for the WV-SFV481 series ("Live" page) (Operating Instructions Monitor sound on a PC - About the "Live" page)

From Ver1.10 onwards the WV-SFV481 series network cameras are supported.
When using the WV-SFV481 series, fisheye images are displayed in an aspect ration of 1:1 on the "Live" page and the directional position of the audio can be specified.



2. Support for the WV-SFV481 series ("Camera registration" page) (Operating Instructions Register a camera for the "Live" page [Camera reg.]



Camera reg.

Camera registration setting Delete

Camera image format JPEG Stream 1
 H.264 Stream 1

IP address
Example of entry: http://192.168.0.10

Port number (1-65535)

Set

JPEG streams (1 or 2) can be selected for the WV-SFV481 series.

Default: 1

Note

- JPEG stream 2 is supported when using camera image display with the WV-SFV481 series.
- The following are the image capture sizes for the "Live" page when JPEG is selected for the camera image.
 - 1280x1280 or 1280x960 (Fisheye images)
 - 1280x960 (Quad PTZ images/Single PTZ images)
 - 1920x1080 (Panorama images)

Please note that if the Image capture mode selected for the camera does not support the above image capture sizes, the size of images displayed will be enlarged or reduced.

3. Changes to the "Audio cursor" function

(Operating Instructions Monitor sound on a PC - About the "Live" page)

The audio cursor's   operations have changed.
(Operations until Ver1.01)

The audio volume can be adjusted in 3 levels: Low/ Middle/ High.

(Operations for Ver1.10 onwards)

The level that audio volume can be adjusted to has been increased by about +14 dB in the conventional ratio. Now there are also more levels that the audio volume can be adjusted to from the previous 3 levels.

4. Addition of the "Noise reduction" function

(Operating Instructions Monitor sound on a PC - About the "Live" page)

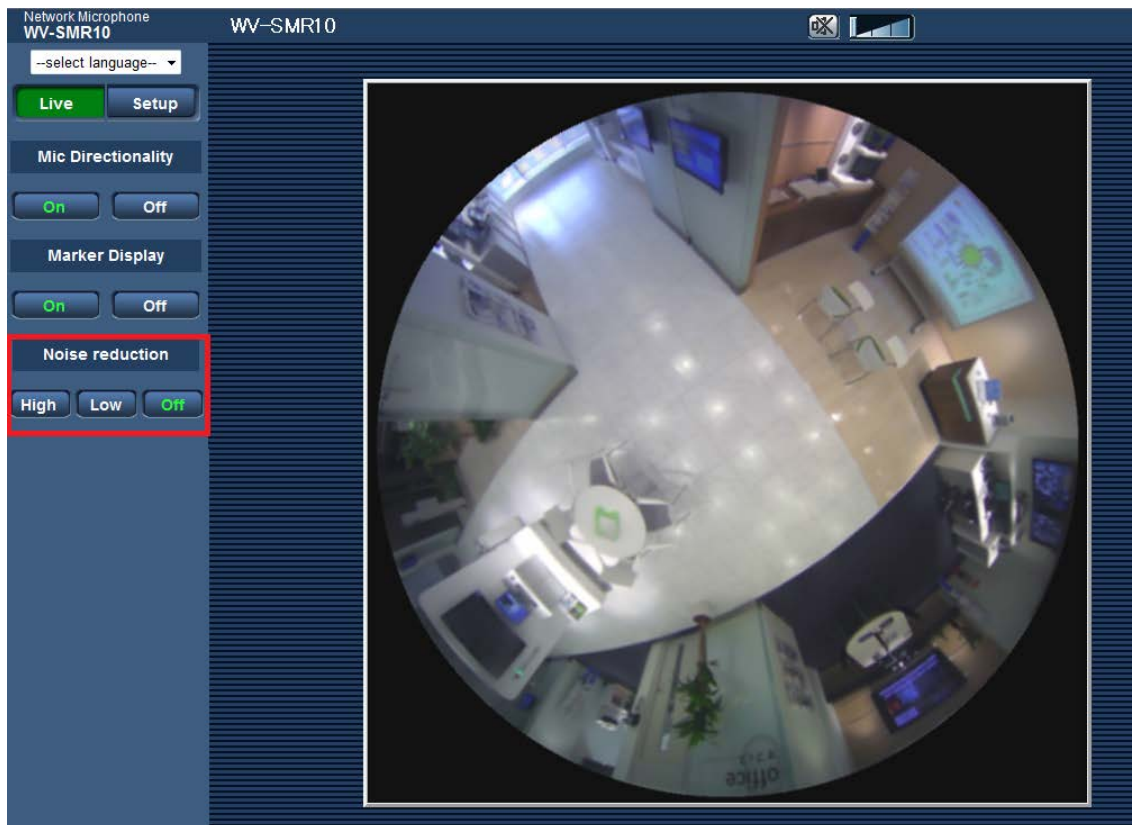
[Noise reduction] button

Configures the noise reduction function.

- [Off] button: The characters on the button will turn green and the noise reduction function will be disabled.
- [Low]/[High] button: The characters on the clicked button will turn green and the noise reduction function can be adjusted in 2 levels (Low and High). When High is used, the noise heard compared to when Low is used is lower. However, because audio may be distorted and difficult to hear, configure the settings so that audio is easy to hear.

Note

- When the "Live" page is displayed, noise reduction operates according to the noise reduction settings configured on the with "Live page (Initial setting)" '(see section 5).



5. Addition of the "Live page (Initial setting)" function (Operating Instructions Configure the settings relating to audio [Audio])

[Noise reduction]

Configure the default noise reduction setting for when the "Live" page is displayed.

Default: Off (noise reduction is disabled)

Noise reduction can be used in 2 levels (High and Low).

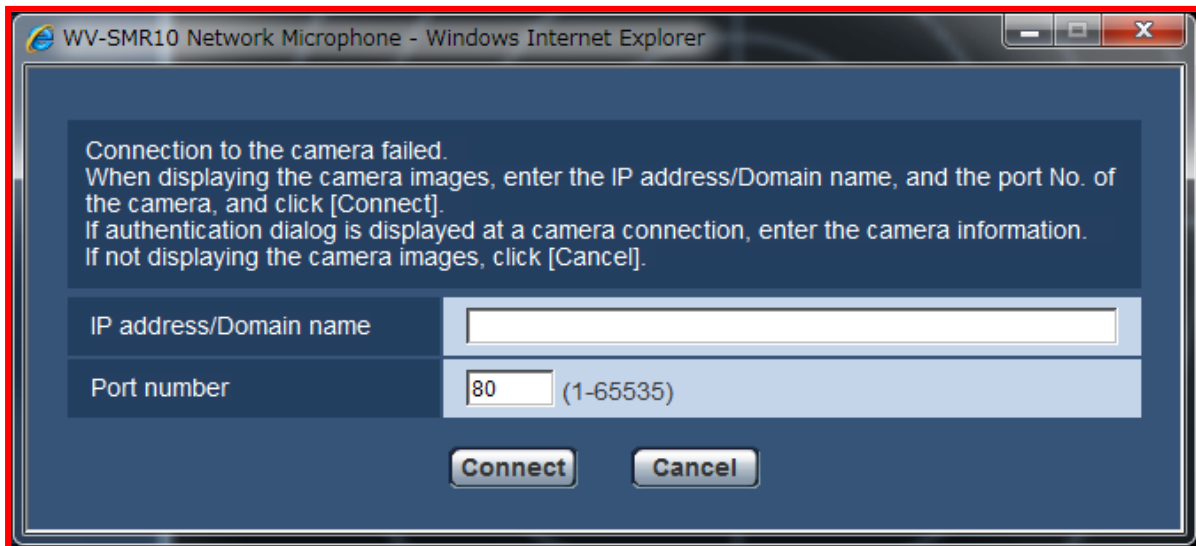
The screenshot displays the 'Audio' configuration page. It is divided into several sections: 'Audio setup', 'Transmission setup', and 'Live page (Initial setting)'. The 'Live page (Initial setting)' section is highlighted with a red border and contains a 'Noise reduction' dropdown menu set to 'Off'. A 'Set' button is located at the bottom of the page.

Audio	
Audio setup	
Microphone sensitivity	3 Default
Transmission setup	
Internet mode (over HTTP)	<input type="radio"/> On <input checked="" type="radio"/> Off
Transmission type	Unicast port (AUTO)
Unicast port	32024 (1024-50000)
Multicast address	239.192.0.20
Multicast port	37004 (1024-50000)
Multicast TTL/HOPLimit	16 (1-254)
Live page (Initial setting)	
Noise reduction	Off

6. Addition of a function used to reconnect to the camera after failing to connect to the camera

(Operating Instructions Monitor sound on a PC - Display the "Live" page)

A function has been added to display a dialog box when the camera that has been specified in [Camera reg.] cannot be connected to. When the following dialog box is displayed, enter the correct camera information and click [Connect] to display the camera's image on the "Live" page. If [Cancel] is clicked when there is no camera registered, the same dialog box will be displayed again.



[IP address/Domain name]

Enter the IP address or host name.

Available number of characters: 1 - 128 characters

Available characters: Alphanumeric characters, the colon (:), the period (.), the underscore (_), and the hyphen (-).

Default: None (blank)

[Port number]

Enter the port number of the camera.

Available port number: 1-65535

Default: 80

IMPORTANT

- This function is mainly used to temporarily display the network microphone's "Live" page when accessing via the Internet. When accessing a microphone or camera over the Internet, audio and image data may be leaked. Therefore, it is necessary to design and enhance security countermeasures, such as controlling access with user authentication. Note that if user authentication is activated, an authentication window may be displayed when accessing the microphone or camera.

7. Addition of a maximum segment size setting for HTTP

(Operating Instructions Configure the network settings [Network])

[HTTP max segment size(MSS)]

Determine whether or not to restrict the maximum segment size (MSS) sent from the camera when using HTTP to view camera images. Under normal circumstances, we recommend using the default setting. When the MSS is restricted in the network line in use, select "Limited(1024byte)" or "Limited(1280byte)". Consult with your network administrator for further information about the maximum packet size (MSS) in the network line.

Default: Unlimited(1460byte)

Note

- Panasonic network cameras have a similar function called "Max RTP packet size".

The "Max RTP packet size" function is not provided for network cameras that have a maximum RTP packet size under 1280 bytes.

The screenshot shows the 'Network' configuration page with the 'Advanced' tab selected. The settings are organized into sections: IPv4 network, IPv6 network, and Common. The 'HTTP max segment size(MSS)' setting is highlighted with a red box and is currently set to 'Unlimited(1460byte)'. Other settings include IP address (192.168.0.10), Subnet mask (255.255.255.0), Default gateway (192.168.0.1), DNS (Auto), Primary server address (0.0.0.0), Secondary server address (0.0.0.0), IPv6 network (Manual: Off, DHCPv6: Off), HTTP port (80), Line speed (Auto), and Easy IP Setup accommodate period (20min).

Section	Setting	Value
IPv4 network	Network Settings	Auto(Advanced)
	IP address(IPv4)	192 . 168 . 0 . 10
	Subnet mask	255 . 255 . 255 . 0
	Default gateway	192 . 168 . 0 . 1
	DNS	<input checked="" type="radio"/> Auto <input type="radio"/> Manual
	Primary server address	0 . 0 . 0 . 0
	Secondary server address	0 . 0 . 0 . 0
IPv6 network	Manual	<input type="radio"/> On <input checked="" type="radio"/> Off
	IP address(IPv6)	
	Default gateway	
	DHCPv6	<input type="radio"/> On <input checked="" type="radio"/> Off
	Primary DNS server address	
	Secondary DNS server address	
Common	HTTP port	80 (1-65535)
	Line speed	Auto
	HTTP max segment size(MSS)	Unlimited(1460byte)
	Easy IP Setup accommodate period	<input checked="" type="radio"/> 20min <input type="radio"/> Unlimited

8. Changes to the "Time zone" function

(Operating Instructions Configure the basic settings of the microphone [Basic] - Configure the basic settings [Basic])

The time zone setting has been reviewed and updated with information current as of October 2014.

City	Before Changes	After Changes
Moscow	GMT +04:00	GMT +03:00
St. Petersburg	GMT +04:00	GMT +03:00
Volgograd	GMT +04:00	GMT +03:00
Ekaterinburg	GMT +06:00	GMT +05:00
Krasnoyarsk	GMT +08:00	GMT +07:00
Irkutsk	GMT +09:00	GMT +08:00
Yakutsk	GMT +10:00	GMT +09:00
Vladivostok	GMT +11:00	GMT +10:00
Magadan	GMT +12:00	GMT +10:00