

# Panasonic®

## Operating Instructions

### Additional Business Intelligence Kit

Model No. **WJ-NVF30, WJ-NVF30W**



Before attempting to connect or operate this product,  
please read these instructions carefully and save this manual for future use.

The model number is abbreviated in some descriptions in this manual.

# Preface

---

Additional Business Intelligence Kit WJ-NVF30, WJ-NVF30W (hereinafter, this product) is a license kit intended to improve the usefulness of Network Disk Recorder WJ-NV300K, WJ-NV300K/G and WJ-NV300K/GJ. By registering the license of this product, the face matching function will become available and it checks if facial features of people in live images are matched with facial features of the registered people, and issues an alarm if a matched face is found. The statistical processing for the results of the face matching will also become available and it displays the result on the main monitor connected with the recorder.

## Features

### Face matching function

By matching registered face images with a face displayed on live images in real time and by notifying the matching result, it will be possible to check guests or discover suspicious people. That can be an aid to crime prevention.

### Statistical processing function

The number of people whose faces are detected can be classified according to each gender and age for a day or a specified time period to create and display a statistical graph. The age distribution is classified by color. In addition, the statistical result can be saved as a CSV file\* in an SDHC/SD memory card or on a PC connected via a network.

\* CSV file: A file that can be edited using a spreadsheet software such as Microsoft® Office Excel®.

## About the user manuals

This document describes how to register the license for this product into a network disk recorder, what to configure before starting the operation and how to operate the product. The product is intended to be used after its license is registered into the network disk recorder. Together with the document, be sure to read the operating instructions provided with the network disk recorder in use.

Depending on descriptions, the model name of WJ-NV300K and WJ-NV300K/G may be omitted as "NV300K". The screens used in these operating instructions show the case that the number of the connected cameras is 16.

Adobe® Reader® is required to read the PDF files on the provided CD-ROM. When Adobe® Reader® is not installed on the PC, download the latest Adobe® Reader® from the Adobe web site and install it.

## System requirements for a PC

When operating this product on a PC, refer to the operating instructions of the network disk recorder in use for further information about system requirements for a PC.

## Trademarks and registered trademarks

- Adobe, Acrobat Reader and Reader are either registered trademarks or trademarks of Adobe Systems Incorporated in the United States and/or other countries.
- Microsoft and Excel are either registered trademarks or trademarks of Microsoft Corporation in the United States and/or other countries.
- Microsoft product screen shot(s) reprinted with permission from Microsoft Corporation.
- All other trademarks identified herein are the property of their respective owners.

---

## **Abbreviations**

The following abbreviations are used in this manual.

SDHC/SD memory card is described as SD card or SD memory card.

Network disk recorders are described as recorder, and network cameras are described as cameras.

# Before using this product

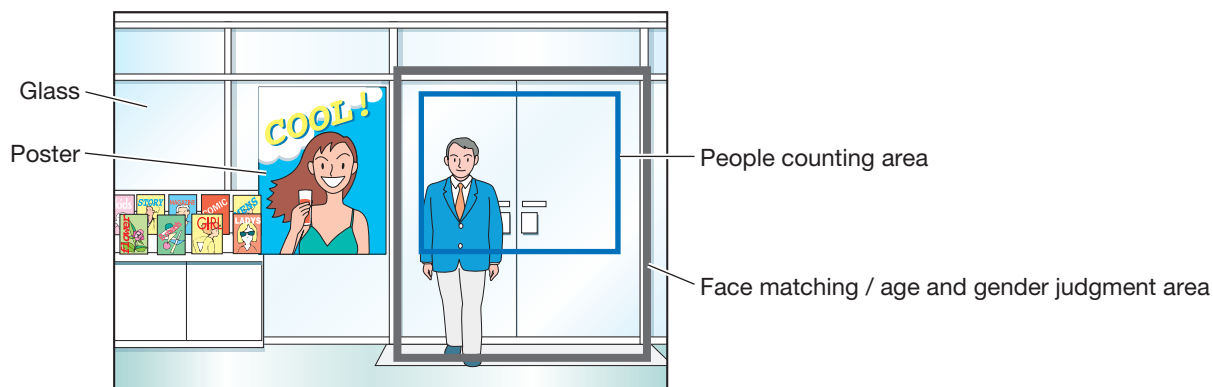
## Face matching and statistical processing

- To use this product, Camera 1 is required to support the face detection function.  
Refer to the "readme.txt" on the CD-ROM provided with NV300K about the supported cameras. The maximum number of faces that can be detected simultaneously depends on the detection performance of the camera.
- The statistical processing function and face matching are available only with Camera 1.
- When using this product, the settings for Camera 1 are automatically changed for face matching.  
Compression: H.264  
Image capture size: SXVGA (1280 x 960)  
Frame rate: 5 ips  
Image quality: SF  
\* Retaining the original values may considerably change the recording time.
- The maximum number of people who can be registered for the face matching function is 100. Up to 100 registrations can be set as the face matching target.
- While the setup screen is being displayed, the face matching function and the statistical processing function are not available.
- Functions that can be used from a web browser on a PC are limited to displaying the statistical processing status and downloading a CSV file of the statistical processing result.
- Up to 4000 data of the statistical processing result can be saved per hour. When too many people appear in images at the same time, some data cannot be accumulated.
- Maximum available period to save the statistical processing result on a hard disk drive is 6 months. After 6 months, data will be deleted from the oldest one.
- The performance of the face matching and statistical processing function depends on the detection performance of the camera and the processing performance of the recorder. When too many people appear in images at the same time, some faces may not be processed.
- During the use of this product, when switching from a multiscreen display to Camera 1, parting lines of the multiscreen or the camera title may be left on the Camera 1 screen for a second.

## To enhance the accuracy of the statistical processing

- Refer adequately to "About the face matching function" in the NV300K Operating Instructions to install the cameras and configure the camera settings.
- Configure the settings of the people counting area and the face matching / age and gender judgement area (☞ page 16, 17) to avoid counting the same person repeatedly and avoid targeting people's faces printed on a poster.
- Configure the setting so that the people counting area is included in the face matching / age and gender judgement area.

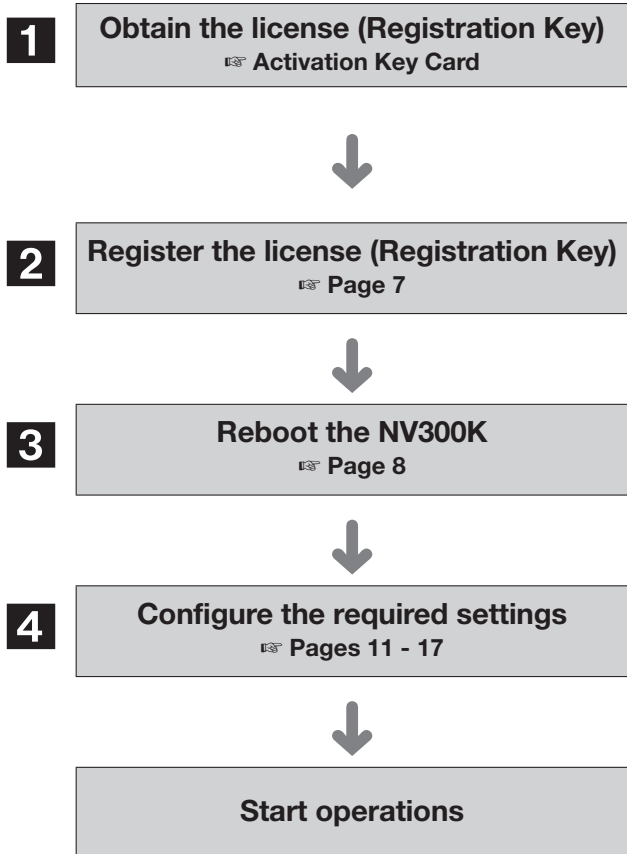
### <Example of the area setting>



# Contents

Preface .....	2
Features.....	2
About the user manuals .....	2
System requirements for a PC .....	2
Trademarks and registered trademarks .....	2
Abbreviations .....	3
Before using this product .....	4
Face matching and statistical processing .....	4
To enhance the accuracy of the statistical processing .....	4
Operations flow .....	6
Register the license (Registration Key).....	7
How to register the license.....	7
About the face matching function .....	9
Face matching alarm actions .....	9
Reset face matching alarm .....	10
Display the face matching thumbnail again .....	10
Save/read the face matching data .....	10
Configure the settings relating to the face matching alarm .....	11
Set up matching area [Setup area].....	14
Configure the settings and save the data [Extra function] .....	15
Configure the settings .....	15
Set up target areas [People counting], [Face matching / Age and gender judgement] .....	16
Save the statistics data on the SD memory card.....	18
Use the statistical processing function .....	19
Display the statistical result.....	19
Operate this product form the web browser .....	21
Check the status of statistical processing .....	21
Save the statistics data on the PC.....	22
About the statistics data .....	23
Troubleshooting.....	24

# Operations flow



- 1** Obtain the "Registration Key" of this product by following the instructions on the Activation Key Card provided with the product.
- 2** Register the "Registration Key" obtained in Step **1** into the NV300K.
- 3** Reboot the NV300K.
- 4** Configure the setting of target areas to enhance the accuracy of the statistical processing.

# Register the license (Registration Key)

To use the face matching function and the statistical processing function, it is required to register the license (Registration Key) of this product in NV300K in use.

Only the administrator and users of an allowed level (see NV300K Operating Instructions) can register the "Registration Key".

## Important:

- Register the "Registration Key" of the NV300K before registering the "Registration Key" of this product.
- After registering the "Registration Key", be sure to click the [Restart] button to reboot the NV300K. Otherwise, the license will not become effective.
- As necessary, perform the settings of the expansion functions since these settings are currently default.

## How to register the license

### Step 1

Obtain the "Registration Key" by following the instructions on the Activation Key Card provided with Additional Business Intelligence Kit (WJ-NVF30, WJ-NVF30W). Refer to the Activation Key Card for further information.

### Step 2

Prepare the extension software. (see About the face matching function)

### Step 3

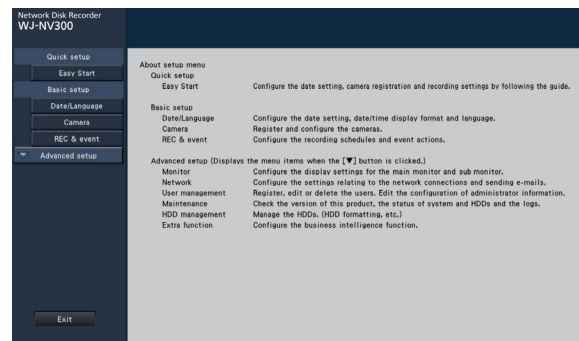
Start the NV300K in use. (see NV300K Operating Instructions)

### Step 4

Click the [Setup] button.



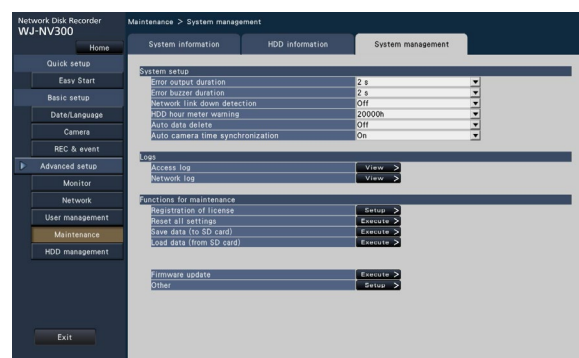
→ The setup menu will be displayed.



### Step 5

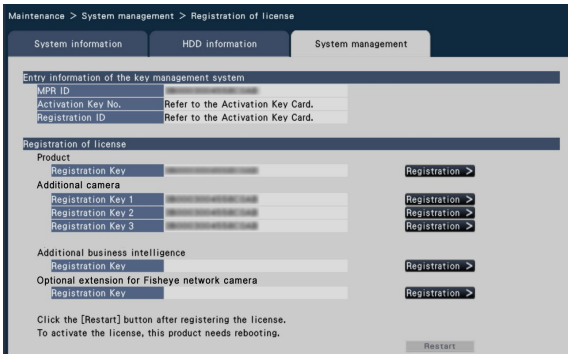
Click "Advanced setup" → [Maintenance] → the [System management] tab on the setup menu.

→ The "System management" page will be displayed.



### Step 6

Click the [Setup >] button of [Registration of license].  
→ The "Registration of license" window will be displayed.



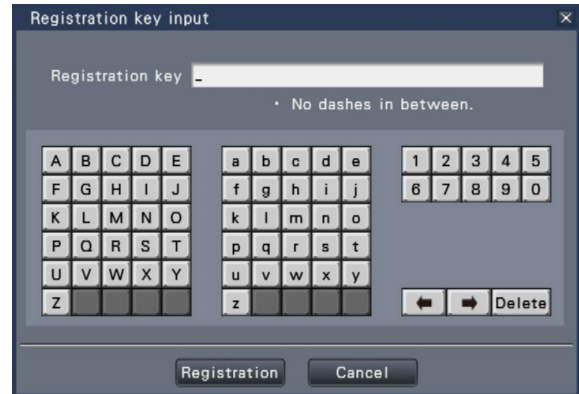
### Step 7

Click the [Registration >] button of "Additional business intelligence" - "Registration Key".  
→ The "Registration key input" window will be displayed.

- "The file was not found."  
→ Click the [Close] button and check if the extension software is saved in the designated directory on the SD memory card.
- "The firmware on the SD card is incorrect."  
→ Click the [Close] button and check if the extension software is the correct one.

### Step 8

Enter the "Registration Key" for this product using the on-screen keyboard, and click the [Registration] button.



→ The "Registration key input" window will return to the registration window.

#### Note:

- When an error message is displayed, enter the effective "Registration Key" again on the entry field.

### Step 9

Click the [Restart] button on the "Registration Key" window to register the license.  
→ The NV300K will reboot, the license will become effective.  
The [Extra function] button will be displayed on the setup menu. Proceed to "Configure the settings" (page 15).



# About the face matching function

When the face matching function is activated, it detects facial features of people in images, matches them against similar facial features recorded earlier or contained in live images, and issues an alarm when a match is found.

---

## Important:

- Face matching does not work while the setup window is displayed.
  - Face matching alarm does not apply event recording.
  - Immediately after startup or after transferring to an operational screen from the setup page, it takes 10 seconds at maximum until the face registration function to be activated.
  - When several people appear in images at the same time, face matching may take time, or it may not be possible to match all facial images.
  - A detected person displayed on the face matching result window may sometimes not be the same as the one who has registered the facial image.
- 

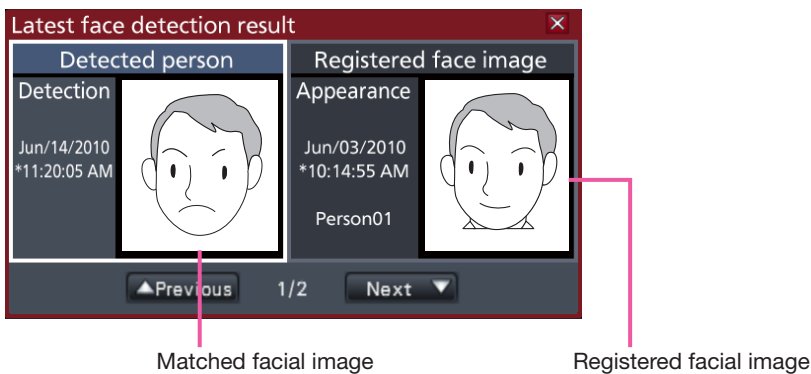
## Face matching alarm actions

When a face matching alarm occurs, the following notifications will be issued:

**An alarm indication and the name of the facial image (name of detected person) will be displayed in the status display area.**



**The latest face matching result will be displayed**



---

## Note:

- When displaying images in wide view, the operation panel will open automatically.
  - When copying or playing back images, the face matching result window will not be displayed.
  - Up to 16 facial images can be memorized. It is possible to switch between facial images by clicking the [Previous]/[Next] buttons.
- 

## Other alarm actions

- The alarm indicator on the front panel of the recorder will blink.
- The buzzer sounds.
- A face matching alarm is output from a terminal on the rear panel (if set up).
- An alarm e-mail is sent (if set up).

# Reset face matching alarm

Proceed as described below to cancel the face matching alarm.

### Step 1

Click the [Alarm] button on the status display panel.  
→ The alarm [Reset] button will be displayed.



### Note:

- To close the face matching result window, click the [x] button.

### Step 2

Click the alarm [Reset] button.  
→ The face matching alarm indication disappears.  
Alarm actions (buzzer/terminal output) will be stopped at the same time.

# Display the face matching thumbnail again

Proceed as described below to display the face matching result window again after having closed it once.

### Step 1

Click the [Alarm] button on the status display panel.  
→ The [Thumbnail] button will be displayed.



### Note:

- The face matching result window display the latest matching facial images found. The face matching results are updated even while the face matching result window is opened.

### Step 2

Click the [Thumbnail] button.  
→ Click this button to display the face matching result window.

# Save/read the face matching data

Save the face matching data on the SD memory card and read it from the SD memory card. Perform operations on the [System management] tab of "Maintenance".

### [Save face data (to SD card)]

Saves the face matching data on the SD memory card. When the [Execute] button is clicked, the confirmation window appears and the face matching data will be saved.

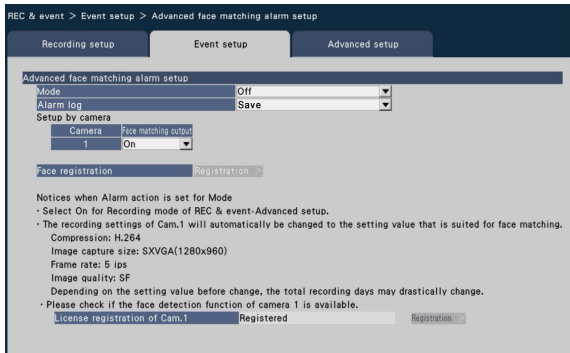
### [Load face data (from SD card)]

Loads the face matching data saved in an SD memory card on the recorder. When the [Execute] button is clicked, the confirmation window appears and the face matching data will be loaded.

# Configure the settings relating to the face matching alarm

## Set up face matching alarm [Advanced face matching alarm setup]

By registering the license of this product in NV300K, configuration of the settings relating to the face matching alarm will become available. Configure the settings relating to the face matching alarm that will be triggered when a previously registered face image is detected among the camera's live images.



### ■ Advanced face matching alarm setup

#### [Mode]

Select the actions to be taken when receiving a face matching alarm input signal.

**Off:** Deactivates the face matching alarm function.

**Alarm action:** Activates a face matching alarm action.

**Alarm action (2CH mode):** Executes the face matching alarm action using two cameras.

**Default:** Off

---

#### Important:

- Face matching alarm does not apply event recording.

---

#### Note:

- When "Alarm action" or "Alarm action (2CH mode)" is selected, the image quality and compression method of Camera 1 will automatically be changed as follows. Retaining the original values may considerably change the recording time.  
Compression: H.264  
Image capture size: SXVGA (1280 x 960)  
Frame rate: 5 ips  
Image quality: SF
- When "Alarm action (2ch mode)" is selected, set the HTTP port number to "80".

---

#### [Alarm log] (See NV300K Operating Instructions)

#### [Setup by camera]

Face matching can be triggered only by Camera 1 (fixed). To use the face matching function, a camera supporting this function needs to be installed as Camera 1.

#### [Face matching output]

Select whether or not to output an alarm signal from the face matching alarm output terminal of the ALARM/CONTROL connector on the recorder's rear panel when a face matching alarm is detected.

**On:** Outputs alarm signals.

**Off:** Does not output alarm signals.

**Default:** On

#### [Usage pattern]

Specifies whether to use the camera only with this recorder or with other devices including the use of PC software (WV-ASF900).

**Non-shared:** Uses the camera exclusively.

**Share:** Uses the camera with other devices.

**Default:** Non-shared

---

#### Note:

- When using the camera only with this product, be sure to use "Non-shared".
- When "Share" is selected, the settings related to face matching will not be set on the camera, so set the camera directly if necessary.
- Some camera cannot be used with other devices.
- The settings are subject to [Usage pattern] of statistical processing function.

---

#### [Registration >] button

Click this button to display the face registration window. Register face images to be used for face matching. (See below.) When "Alarm action" is set for "Mode" of "Advanced face matching alarm setup", it will be possible to register face image.

### [License registration of Cam.1]

It is possible to check if the face detection function is available for camera 1 or not.

When the license is not registered, it is possible to register the license for the face detection function by clicking the [Registration >] button.

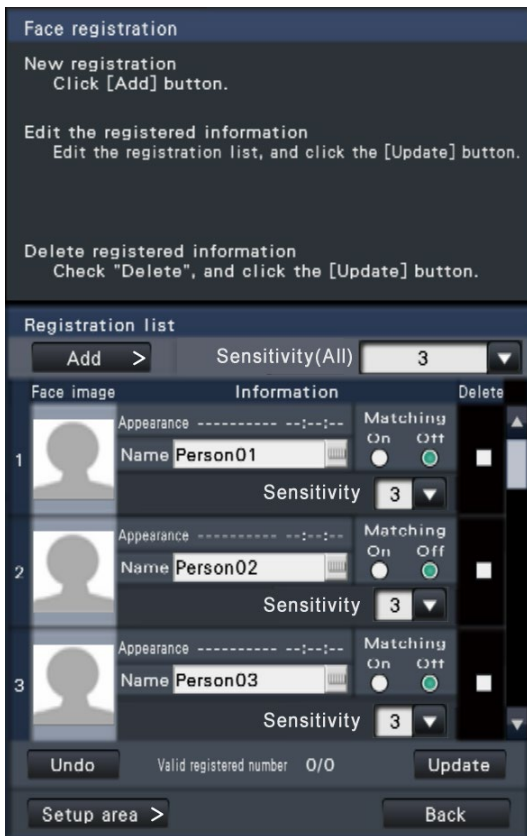
For further information about face detection function of camera, refer to the operating instructions of the cameras in use.

### [Back] button

Click the button after completing the settings. The screen returns to the [Event setup] tab.

## Register face images [Face registration]

Use this page to register new face images, to check already registered face images or to assign names to the face images.



### Note:

- Face images can be registered only on images recorded when "Alarm action" is selected for "Mode" of "Advanced face matching alarm setup" (☞ page 11).

### ● [Add >] button

Register new face images. (☞ page 13)

### ● [Sensitivity (All)]

Set the sensitivity level of the face matching to be applied to all face images.

1(Low)/ 2/ 3/ 4/ 5(High)

Default: 3

### ● [Face image]

This is the area where registered face image is displayed.

### ● [Appearance]

Displays the date & time when a face image appeared.

● [Name]

Enter the name to be assigned to the face image (in up to 12 characters) using the on-screen keyboard (☞ page 8).

● [Matching]

Select whether or not to activate the face matching function.

● **On:** Activates the face matching function.

● **Off:** Does not activate the face matching function.

**Default:** Off

● [Sensitivity]

Set the sensitivity level of the face matching for each face image.

1(Low)/ 2/ 3/ 4/ 5(High)

**Default:** 3

● [Delete]

To delete images, mark their checkboxes.

● [Update] button

Use this button to register or delete the changes made to the image, the assigned name and the setting for face matching actions.

● [Undo] button

Use this button to undo the changes made to the image, the assigned name and the setting for face matching actions, and to return it to the state it was in when last clicking the [Update] button. Once the [Update] button has been clicked, the state before updating cannot be restored. In addition, a face image once deleted cannot be restored.

● [Setup area >] button

The window for setting up the matching area will be displayed. (☞ page 14)

● [Back] button

Return to the "Advanced face matching alarm setup" page.

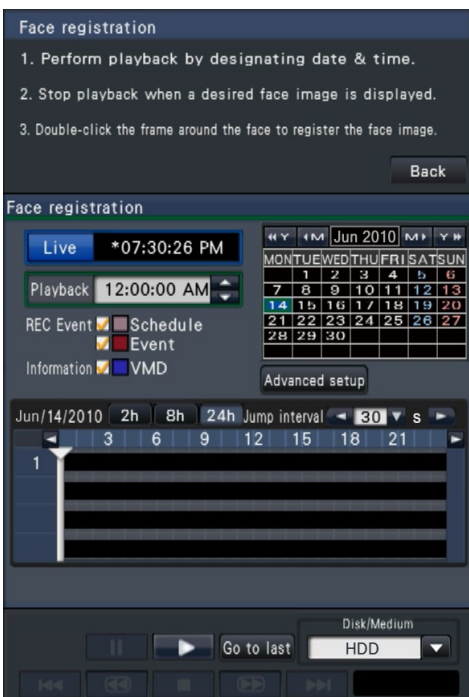
## Register face images [Add]

A maximum of 100 face images can be registered. If 100 face images have already been registered, add new images after having deleted some of the registered images.

### Step 1

Click the [Add >] button in the face image registration window. If the face image automatically searched or changed name has not already been updated, click the [Update] button before adding it.

→ The "Face registration" window will be displayed.



### Step 2

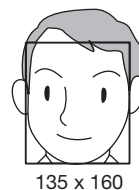
On the playback operation panel, play back the recorded data containing the face image to register for face matching. Refer to the NV300K Operating Instructions for further information about the playback operation.

→ The image is played back in the image display area.

### Step 3

As soon as the face image to register is displayed, pause playback.

→ The facial features detected in the image are displayed inside a frame with the frame size (horizontal x vertical).



### Note:

- Register the face image so that the face width (frame width) is 125 pixels or more.

#### Step 4

If the displayed face image is acceptable for registration, double-click the face frame.

→ The screen returns to the face image registration window, and the selected face image will be displayed in the face image display area.

#### Note:

- When returning to the face image registration window without applying the face image, click the [Back] button.

#### Step 5

If necessary, configure the setting for face matching actions, open the on-screen keyboard (☞ page 8) to assign a name, and click the [Update] button.

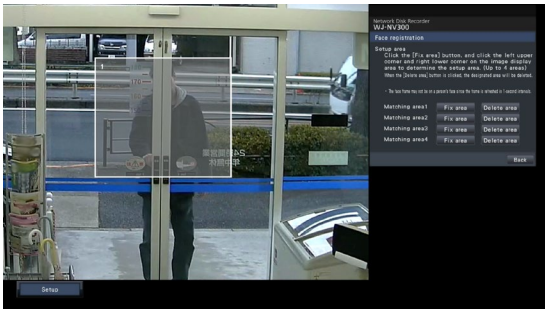
## Set up matching area [Setup area]

Set up to 4 areas for matching face images while displaying live images. At the default, the whole area on the camera images is set to match face images. By designating the matching areas, it is possible to reduce the operation failure.

#### Step 1

Click the [Setup area >] button (☞ page 13) on the face image registration window.

→ The window for setting up the matching area will be displayed. The portion where the camera detected a matching face will be displayed within a green frame in the image display area. (The frame will be updated every second.)



#### Step 2

Click the [Fix area] button next to the respective matching area. A maximum of 4 matching areas can be registered to allow for polygonal shapes.

#### Step 3

On the displayed image, click the top left corner and bottom right corner of the square that will become the area.

→ The designated portion will be displayed in gray and registered as a matching area.

If even part of the green frame is overlapped with the matching area, the portion within a green frame will be targeted for the face matching function.

#### Note:

- As the Matching areas will be set up to match the image display area divided into 16x16 segments, the top left and bottom right detection areas may not be exactly as designated.
- To delete a registered area, click the [Delete area] button for the matching area to delete.

#### Step 4

To complete the settings, click the [Back] button.

→ The screen returns to the face image registration window.

# Configure the settings and save the data [Extra function]

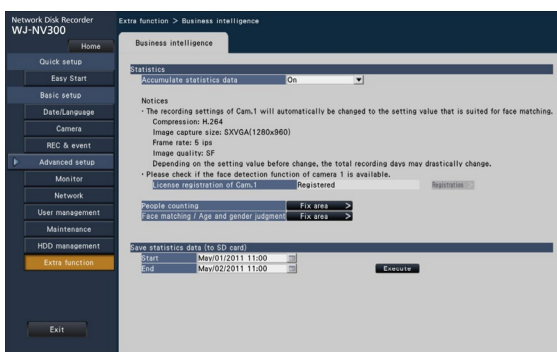
The settings on the NV300K relating to the functions of this product can be configured on [Advanced setup] → [Extra function] → the [Business intelligence] tab on the setup menu. Configure the area settings to enhance the accuracy of the statistical processing and save the statistical processing data on an SDHC/SD memory card. Only the administrator and users of an allowed level can configure the settings. ( NV300K Operating Instructions)

---

## Important:

- The [Extra function] button will be displayed under [Advanced setup] after registering the license for the product.
- 

## Configure the settings



### [Accumulate statistics data]

Select whether or not to execute the statistical processing (data accumulation) of the face detection results. The statistical processing will not be executed in the period that is set to "Off", and the statistics data will not be accumulated or displayed on the graph.

**Off:** Does not execute the statistical processing.

**On:** executes the statistical processing.

**On (2CH mode):** Enables statistical processing with two cameras.

**Default:** Off

---

### Note:

- When "On (2ch mode)" is selected, set the HTTP port number to "80".
- 

### [Setup by camera]

When "On" is selected, statistical processing can be performed only by Cam.1. When "On (2CH mode)" is selected, statistical processing can be performed only by Cam.1 and Cam.2.

### [Accumulate statistics data]

Selects a camera to be used for statistical processing.

### [Usage pattern]

(page 11)

# Set up target areas [People counting], [Face matching / Age and gender judgement]

Configure the setting of target areas to enhance the accuracy of the statistical processing.

While displaying live images, up to 4 people counting areas and up to 4 face matching / age and gender judgement area can be set up. At the default, the whole camera image is targeted for the statistical processing. It is possible to enhance the accuracy of the statistical processing by setting up the areas.

## [People counting]

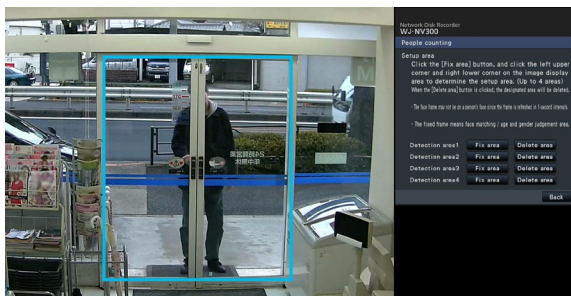
Set up areas to count people. The number of people will be targeted for counting when a person appears in the area. The number will be counted when the person moves outside of the image.

The number will not be counted when a person only moves into the area from outside of the area. Limit the people counting area on the entrance or a reception area in a store to avoid counting the same person repeatedly.

### Step 1

Click the [Fix area >] button of "People counting" on the business intelligence setup page (page 15).

→ The window for setting up the people counting area will be displayed.



The following are displayed on the image display area.

**Green frame:** Face detection (The frame will be updated every second.)

**Aqua frame:** Face matching / age and gender judgement area (page 17)

### Step 2

Click the [Fix area] button next to the respective people counting area. A maximum of 4 areas can be registered to allow for polygonal shapes.

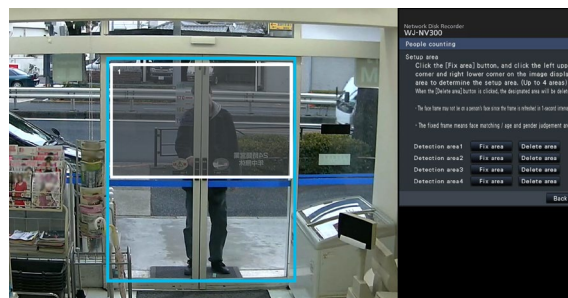
## Note:

- It is recommended to select such places as the entrance or the reception area in a store where the same person does not appear repeatedly in the area.
- Configure the setting so that the people counting area is included in the face matching / age and gender judgement area.

### Step 3

On the displayed image, click the top left corner and bottom right corner of the square that will become the area.

→ The designated area will turn gray and will be registered as a people counting area. If even part of the green frame is overlapped with the people counting area, the portion within a green frame will be set to count the number of people.



### Step 4

To complete the settings, click the [Back] button.

→ The screen returns to the business intelligence setup page.

## Note:

- As each area will be set up to match the image display area divided into 16x16 segments, the top left and bottom right detection areas may not be exactly as designated.
- To delete a registered area, click the [Delete area] button for the area to delete.



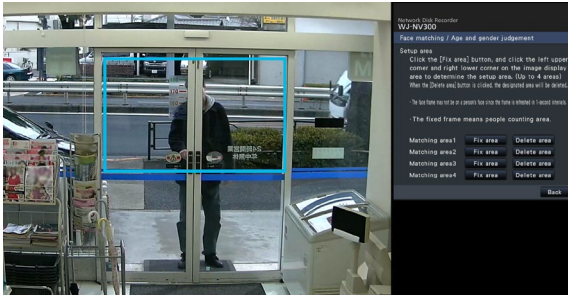
### [Face matching / age and gender judgement area]

Register the areas to perform face matching / age and gender judgement. The result of the face detection that is performed in this area will be targeted for the face matching and the statistical processing according to ages and genders. The settings are the same as the area settings for face matching that is performed on [Face registration] of the [Event setup] tab of the "Basic setup" page - the [REC & event] tab. (NV300K Operating Instructions)

#### Step 1

Click the [Fix area >] button of "Face matching / Age and gender judgement" on the business intelligence setup page (page 15).

→ The window for setting up the face matching / age and gender judgement area will be displayed.



The following are displayed on the image display area.

Green frame: Face detection (The frame will be updated every second.)

Aqua frame: People counting area (page 16)

#### Step 2

Click the [Fix area] button next to the respective face matching / age and gender judgement area. A maximum of 4 areas can be registered to allow for polygonal shapes.

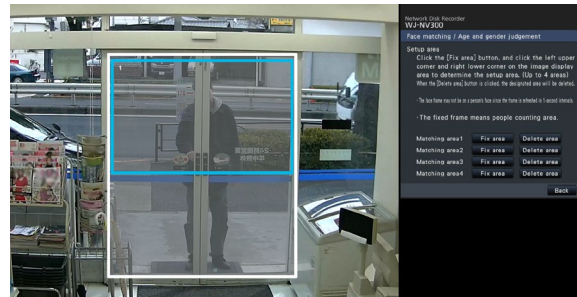
#### Note:

- Configure the setting so that the people counting area is included in the face matching / age and gender judgement area.

#### Step 3

On the displayed image, click the top left corner and bottom right corner of the square that will become the area.

→ The designated area will turn gray and will be registered as a face matching / age and gender judgement area. If even part of the green frame is overlapped with the face matching / age and gender judgement area, the portion within a green frame will be targeted for the statistical processing.



#### Step 4

To complete the settings, click the [Back] button.

→ The screen returns to the business intelligence setup page.

#### Note:

- As each area will be set up to match the image display area divided into 16x16 segments, the top left and bottom right detection areas may not be exactly as designated.
- To delete a registered area, click the [Delete area] button for the area to delete.

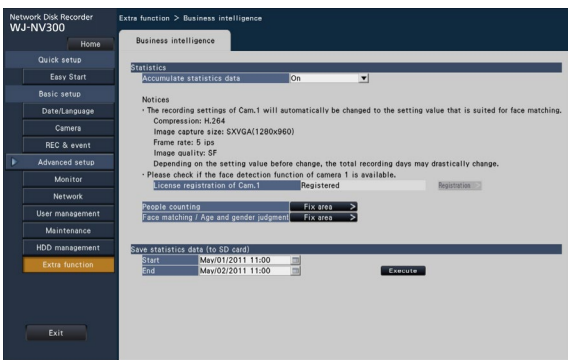
# Save the statistics data on the SD memory card

The statistical processing result can be saved on the SD memory card in the format of a CSV file. It is possible to designate the period to save the data by date & time. Refer to page 23 for further information about the statistics data.

---

## Note:


- Insert an SD memory card into the main unit of NV300K in advance.
  - When using an unformatted SD memory card or an SD memory card formatted with other devices, format the card on the NV300K.
  - Refer to the NV300K Operating Instructions for further information about how to handle the SD memory card.
  - Maximum available period to save the statistical processing result is 6 months. After 6 months, data will be deleted from the oldest one. It is recommended to make back-up copies regularly on an SD memory card.
- 



## [Save statistics data (to SD card)]

Set the start time and the end time of the period to save statistics data on the SD memory card.

### Step 1

Click the  icon of "Start" and "End".

→ A calendar will be displayed. Refer to the NV300K Operating Instructions for further information about how to set the date using the calendar.

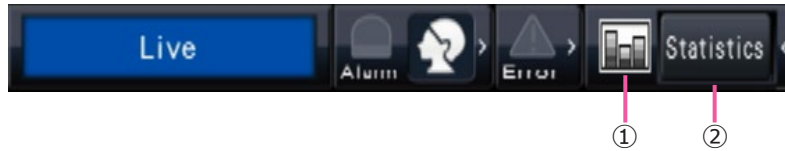
### Step 2

Click the [Execute >] button.

→ The following confirmation window will be displayed to save the statistics data on the SD memory card.


# Use the statistical processing function

If the license for this product is registered, the following buttons will become available on the status display panel of the control screen and that of the wide view screen. Refer to the NV300K Operating Instructions for further information about the control screen or the status display panel.



## ① Statistical status button

Indicates the status of statistical processing. This button turns gray while the statistical processing is being stopped. It is possible to display/hide the statistical result button by clicking this button.

 : The statistical processing is being performed.

 : The statistical processing is being stopped.

## ② Statistical display button

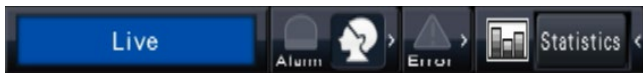
Indicates the statistical result on the operation panel of the control screen.

When this button is clicked, wide view screen will be changed to the control screen.

## Display the statistical result

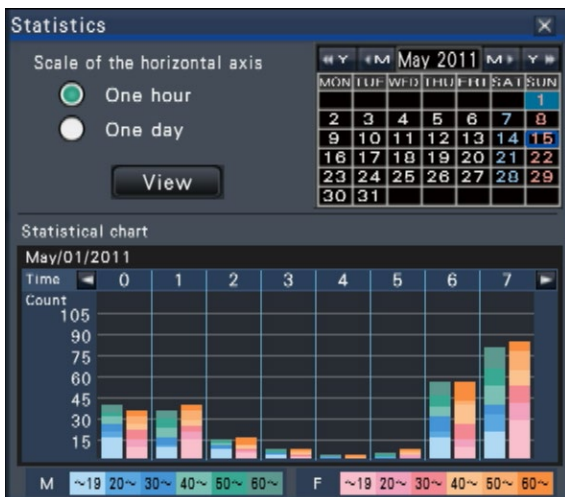
### Step 1

Click the [Statistics] button on the status display panel.

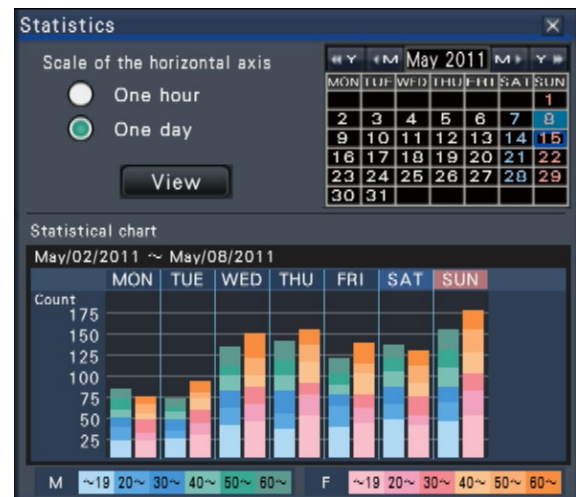


→ The statistical result panel will be displayed on the operation panel (The wide view screen will be changed to the control screen.).

### <Scale of the horizontal axis: One hour>



### <Scale of the horizontal axis: One day>



## Step 2

Select the date to display the statistical result. Select the year, month and day from the calendar.  
(☞ NV300K Operating Instructions)

## Step 3

Select the scale of the horizontal axis.  
When "One hour" is selected, the statistical result per hour in the day (for 24 hours) selected in Step 2 is targeted for display. When "One day" is selected, the statistical result per day in the week from Monday to Sunday including the day selected in Step 2 is targeted for display ("One hour" has been selected for the "Scale of the horizontal axis" when the statistical result panel is displayed).

## Step 4

Click the [View] button.  
→ The statistical graph will be displayed in accordance with the setting. Each time the [View] button is clicked, the statistical result will be refreshed to the newest status.

### Note:

- The graph will not be displayed when designating the period in which the statistical processing has not been performed. Besides, it is impossible to display the statistics data of more than 6 months ago.
- When "One hour" is selected for "Scale of the horizontal axis", it is possible to display the next or previous hour by clicking the [<] or [>] button of the statistical graph.
- (It is impossible to go to the next or previous day.)
- When "One day" is selected for "Scale of the horizontal axis", it is impossible to click the [<] or [>] button.

## Step 5

Click the [x] button to close the statistical result panel.

## <How to view the statistical graph Example: When "One hour" is selected for "Scale of the horizontal axis">



Horizontal axis: When "One hour" is selected for "Scale of the horizontal axis", the statistical graph will be displayed on an hourly basis (up to 24 hours), when "One day" is selected, the statistical graph will be displayed on a weekly basis divided into each day of the week.

Vertical axis: The total number of people accumulated through the face matching function is displayed according to each gender and age. The graph bars are classified into the following colors by age. Therefore, it is possible to grasp at first sight the distribution of people by number and age for a specified time period or a specified day of the week.

19 years old or less/ 20 to 29 years old/ 30 to 39 years old/ 40 to 49 years old/ 50 to 59 years old/ 60 years old or more

The scale of the vertical axis will be displayed in accordance with the maximum value of the number of people to be displayed on the graph.

### Note:

- The same person may sometimes be counted more than one time since people counting is performed each time a face is detected. The number of people should be referred to only as an indication.
- Immediately after startup or after transferring to an operational screen from the setup page, it takes 10 seconds at maximum until the accumulate statistics data function to be activated.
- People whose gender cannot be judged will not be displayed on the graph. However, they will be saved as statistics data. (☞ Page 23)
- To save the statistics data on the SD memory card, click the [Setup] button, and perform the operation on [Advanced setup] → [Extra function] (☞ page 15). (To display the setup menu, the administrator or users of an allowed level should log into the NV300K.)

# Operate this product form the web browser

From the web browser on a PC connected to the NV300K, it is possible to check the status of statistical processing or download the statistics data.

Refer to the NV300K Operating Instructions for further information about the required network settings, the security functions, and the login procedure.

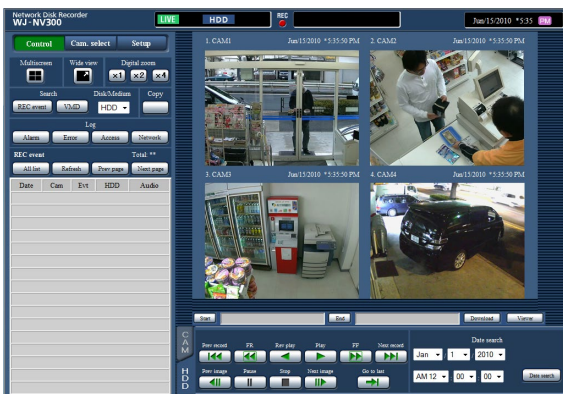
## Check the status of statistical processing

It is possible to check whether the statistical processing is being performed or stopped in the status display area on the top page.

### Step 1

Start the web browser on the PC to log into the NV300K. (☞ NV300K Operating Instructions)

→ The top page will be displayed.



### Step 2

While the statistical processing is being performed, the display in the status display area will be as follows.



**STAT** : Indicates that the statistical processing is being performed.

# Save the statistics data on the PC

From the web browser, it is possible to save the statistics data on the PC.

## Step 1

Click the [Setup] button on the top page (WJ-NV300K Operating Instructions) of the web browser on the PC.

→ The setup menu will be displayed.

## Step 2

Click the [Extra function] button.

The [Extra function] button will be displayed after registering the license for Additional Business Intelligence Kit.

→ The business intelligence setup page will be displayed.



## Step 3

Set the year, month, date and time of the start point and end point for "Download statistics data".

## Step 4

Click the [Download] button.

→ The "Save As" window will be displayed. Save the file in any directory on the PC.

The statistics data will be saved as a CSV file.

Refer to page 23 for further information about the statistics data.

# About the statistics data

The statistics data will be saved in the following format and with the following content as a CSV file.

File name:

(Ex: If the date & time is designated between April 20, 2011 7:00:00 and April 27, 2011 20:00:00 when the data is saved)

01\_110420070000\_110427200000\_rr\_nn.csv

- The camera number will be given automatically to the first 2 digits of the file name.
- Only the last 2 digits of the year will be given to the file name.
- rr: When the same data is saved more than one time, sequential numbers will be given automatically to these files.
- nn: When the number of lines in a file exceeds 65536, the file will be divided in two or more and sequential numbers will be given automatically to these files.

When the statistics data is downloaded from the web browser, it is impossible to divide the file in two or more automatically. In such a case, "00" will be given instead of "rr".

Destination to save: Operation on the NV300K      SD card [Drive]:\PRIVATE\MEIGROUP\PSS\NVR  
Web browser    Any folder on the PC

## <Example of display: When the statistics data is opened with Microsoft® Office Excel®>

#localtime, gmtime, timezone, summertime, gender, age,

#gender, 0:male, 1:female, 255:unknown

2011/04/21 0:24:36 01,	2011/04/20 15:24:36 01,	GMT+9:00,	0,	0,	7
2011/04/21 0:24:36 17,	2011/04/20 15:24:36 17,	GMT+9:00,	0,	0,	42
2011/04/21 0:24:36 17,	2011/04/20 15:24:36 17,	GMT+9:00,	0,	1,	17
2011/04/21 0:24:36 26,	2011/04/20 15:24:36 26,	GMT+9:00,	0,	0,	6
2011/04/21 0:24:36 32,	2011/04/20 15:24:36 32,	GMT+9:00,	0,	0,	60
2011/04/21 0:24:36 34,	2011/04/20 15:24:36 34,	GMT+9:00,	0,	1,	28
⋮	⋮	⋮	⋮	⋮	⋮

Item names of data will be displayed on the 1st line, the description of "gender" will be displayed on the 2nd line, and the data of each person whose face has been matched will be displayed on the 3rd or subsequent lines.

### [localtime]

Displays the time when a person appeared in the form of "year, month, day" + "hour, minute, second" + "two decimal places of second".

### [gmtime]

This is an item for data management. Displays the Greenwich mean time.

### [timezone]

Displays the setting value of the time zone that is set for the NV300K.

### [summertime]

Displays whether the current date & time is in the summertime if "Daylight saving time" is activated for the NV300K.

- 0: Out of the summertime
- 1: In the summertime

### [gender]

Displays the gender judgement result of a person.

- 0: Male
- 1: Female
- 255: Judgement is impossible.

### [age]

Displays the age judgement result.

- 255: Judgement is impossible.

---

### Note:

- If the statistics data is downloaded from the web browser when there is a file whose number of lines exceeds 65536, designate the start point and end point of the data to download so that the file can be divided and saved in two or more. (Page 22)
-

# Troubleshooting

Before asking for repairs, check the symptoms with the following table.

Contact your dealer if a problem cannot be solved even after checking and trying the solution in the table or a problem is not described below.

Symptom	Cause/solution	Ref. pages
The following message is displayed on the statistics result panel. "Buy Additional Business Intelligence Kit to display the statistical graph."	<ul style="list-style-type: none"> <li>The license (Registration Key) of Additional Business Intelligence Kit has not been registered. Register the license.</li> </ul>	-
"Count" (the number of people) to be displayed on the graph becomes 0.	<ul style="list-style-type: none"> <li>Is "Off" selected for the setting for statistical processing? To perform the statistical processing, select "On".</li> </ul>	15
	<ul style="list-style-type: none"> <li>The settings of the people counting area and that of the face matching / age and gender judgement area may be improperly configured. Configure the setting so that the people counting area is included in the face matching / age and gender judgement area.</li> </ul>	16, 17
Even if the face matching alarm is set to "Alarm action (2CH mode)", the face matching alarm is not detected. Statistical processing does not work even if the statistical processing setting is set to "On (2CH mode)".	<ul style="list-style-type: none"> <li>Is the usage pattern setting set to "Share"? If you want to use the camera only with this product, set the usage mode to "Non-shared" and set the face matching alarm and statistical processing.</li> </ul>	11



**For U.S. and Canada:**

**Panasonic i-PRO Sensing Solutions Corporation of America**

800 Gessner Rd, Suite 700 Houston, TX 77024

<https://www.security.us.panasonic.com/>

**Panasonic Canada Inc.**

5770 Ambler Drive, Mississauga, Ontario, L4W 2T3 Canada

1-877-495-0580

<https://www.panasonic.com/ca/>

**For Europe and other countries:**

**Panasonic Corporation**

<http://www.panasonic.com>

Panasonic i-PRO Sensing Solutions Co., Ltd.  
Fukuoka, Japan

Authorised Representative in EU:

Panasonic Testing Centre  
Panasonic Marketing Europe GmbH  
Winsbergring 15, 22525 Hamburg, Germany

