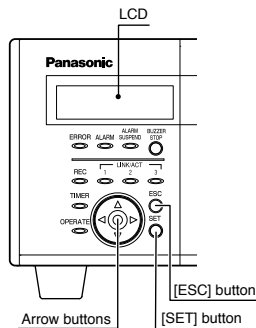


The Quick Reference Guide provides simple explanations of how to operate this recorder.

## ■ Network settings

Configure the network settings such as the IP address, subnet mask, etc. for each port.

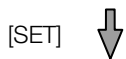


### ● Default network settings

Item	Camera port [PT#1]	Client PC port [PT#2]	Maintenance port [PT#3]
DHCP	–	OFF	–
IP address	192.168.0.250	192.168.1.250	192.168.2.250
Subnet mask	255.255.255.0	255.255.255.0	255.255.255.0
Default gateway	–	192.168.1.1	–
HTTP port	–	80	–

### ● IP address setup display

IP Address Setup  
[SET]



PT#1 IP ADDR  
≥192.168.000.250



PT#1 Subnet Mask  
≥255.255.255.000

### ● How to configure the network settings

Repeat pressing the arrow button (up or down) until the "IP Address Setup" indication is displayed. When the "IP Address Setup" indication is displayed, press the [SET] button.

- The current selected setup item or a value will be indicated by the underscore mark "\_".

→ The setup window will be displayed.

- When the underscore mark "\_" is below the ">" indication, Arrow button (left or right): Select a port number  
Arrow button (up or down): Select a setup item

Press the [SET] button while the underscore mark ( \_ ) is displayed below the ">" indication.

→ The underscore mark "\_" will move below a setting value and the editing of the settings became enabled.

Move the underscore mark below the number to be edited.

- Arrow button (left or right): Move the underscore mark "\_"
- Arrow button (up or down): Enter a value

To determine the edited setting, move the underscore mark below the ">" indication by pressing the [ESC] button.

To display the time and date display (standby display) again, press the [ESC] button again.

## ■ Display the operation window

Display the operation window using a web browser installed on a PC.

Launch a web browser. After the web browser starts, enter the IP address set to this recorder in the address box, and press the enter key.

→ The user authentication window will be displayed.

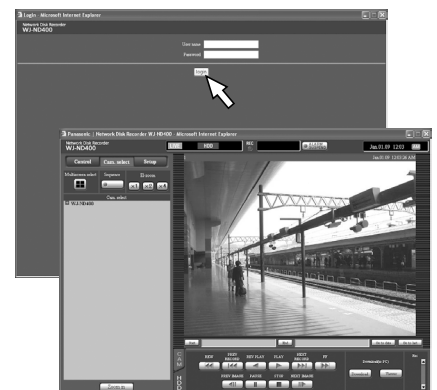
Enter the registered user name and password to log in to the recorder.

- Default  
User name: ADMIN  
Password: 12345

→ The top page of the operation window will be displayed.

- When the top page is displayed for the first time, the install wizard of the ActiveX control will be displayed. Follow the instructions of the wizard.

Click the [login] button.



## ■ User interface on the operation window



- ① **[Control] button:** Search and play recorded images, switch the camera channels, etc.
- ② **[Cam. Select] button:** Select the camera channel from which images are to be displayed.
- ③ **[Setup] button:** Configure the settings of the recorder.
- ④ **Status display area:** The status of the recorder such as the recording status, playback status, etc. will be displayed.
- ⑤ **Current time display area:** The current time will be displayed.
- ⑥ **Image display area:** Live images/recorded images will be displayed.
- ⑦ **Playback point operation area:** Designate a point to be played or play the latest recorded image.
- ⑧ **[HDD] tab:** Control playback operation.
- ⑨ **[CAM] tab:** Control the camera operation (zoom, focus, auto function, etc.).

## ■ Basic settings

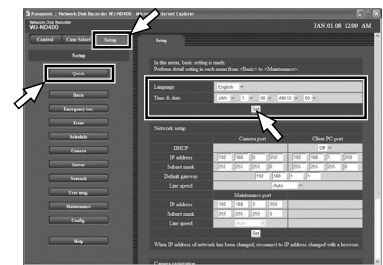
Configure the minimum required settings to operate the recorder.

### 1. Set the current time

Click the [Setup] button, and then click the [Quick] button. → The "Quick" page will be displayed.

Set the current time and date.

Click the [Set] button just below the "Time & date" setting.



### 2. Register cameras

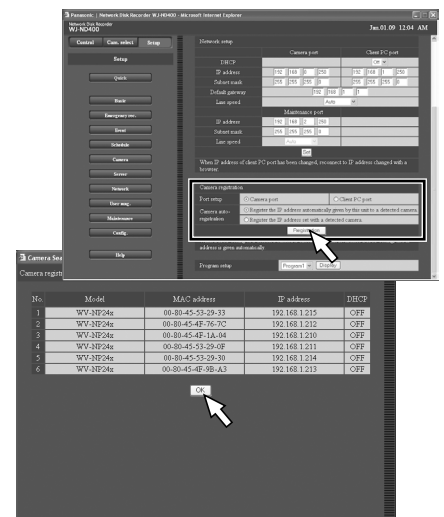
Select a port to which cameras are connected to detect them. → Select the camera port or the client PC port.

Determine how to assign and register an IP address of the detected camera. → Select [Register the IP address automatically given by this unit to a detected camera] or [Register the IP address set with a detected camera].

Click the [Registration] button, and then click the [OK] button. → The "Camera registration result" window will be displayed after the registration is complete.

Check the registration results, and then click the [OK] button. → Up to 64 cameras can be registered.

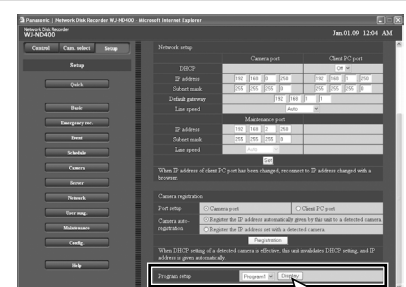
- When the desired camera is not detected or when the settings of a camera are required to be changed, configure the settings on the "NW camera" page.



### 3. Program

When the camera registration is complete, the recording rate for the live image transmission and manual recording on the "Program" page will automatically be set to "1 ips".

Click the [Display] button to check the detailed settings of "Program".



## ■ Monitor live images

Display live images on a 1-screen or on a 4-screen (multiscreen).

Click the [Cam. Select] button.

→ A list of the registered cameras will be displayed in the [Cam. Select] box.

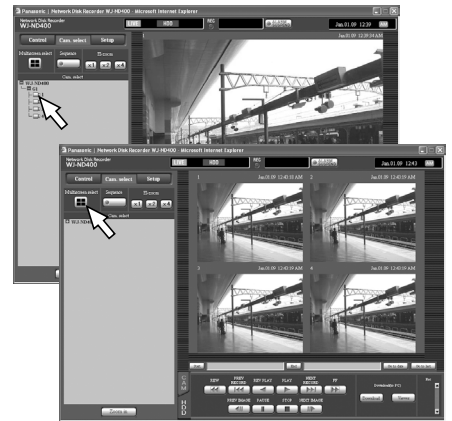
Click the "WJ-ND400" icon, the group title and the camera title in order.

→ Live images from the selected camera channel will be displayed on a 1-screen.

Click the [Multiscreen select] button.

→ Live images from the cameras (registered as a group) will be displayed on a 4-screen.

- Each time the [Multiscreen select] button is clicked, live images from the registered camera groups will be displayed.



Display live images from the cameras sequentially (sequential display).

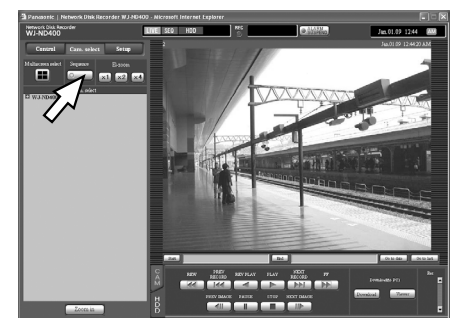
Click the [Cam. Select] button, and then click the [Sequence] button.

→ Live images from the cameras will be displayed sequentially.

- The indicator on the [Sequence] button will light green and the "SEQ" indication will be displayed in the status display area.

Click the [Sequence] button again.

→ The indicator on the [Sequence] button will go off and the sequential display of live images will stop.

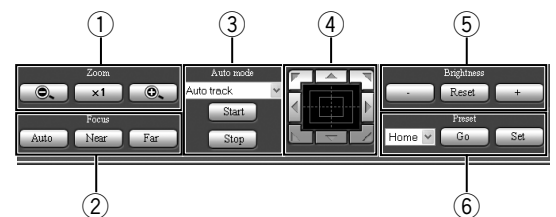


## ■ Control cameras

It is possible to operate cameras with the panning/tilting function on the [CAM] tab.

- ① **[Zoom]:** Zoom in/out the displayed image.
- ② **[Focus]:** Adjust the focus point.
- ③ **[Auto mode]:** Activate the designated auto function of the camera.
- ④ **Control buttons:** Adjust the camera direction.  
**Control pad:** Panning/tilting speed will be faster if a clicked point gets farther from the center point of the control pad.
- ⑤ **[Brightness]:** Adjust the lens iris (brightness).
- ⑥ **[Preset]:** Move the camera to the registered preset position.

[CAM] tab



## ■ Manual recording


It is possible to record images manually.

Click the [▲] button in the [REC] box on the [HDD] tab.

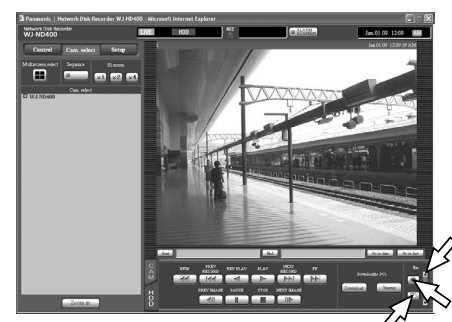
→ Repeat clicking the [▲] button until the [Recording] button and the [Recording stop] button are displayed.

Click the recording button  (red).

→ Recording will start and the [REC] indicator in the status display area will light red.





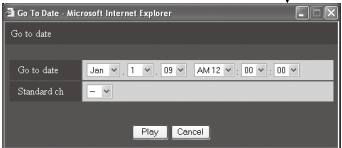
Click the recording stop button  (yellow).

→ Recording will stop and the [REC] indicator in the status display area will disappear.

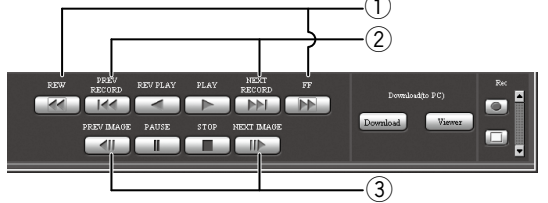


## ■ Play recorded images

It is possible to play recorded images.

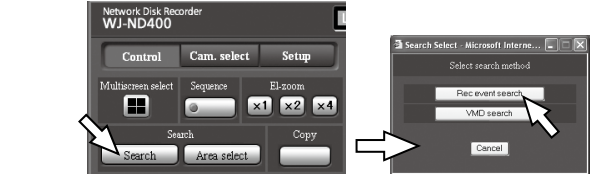
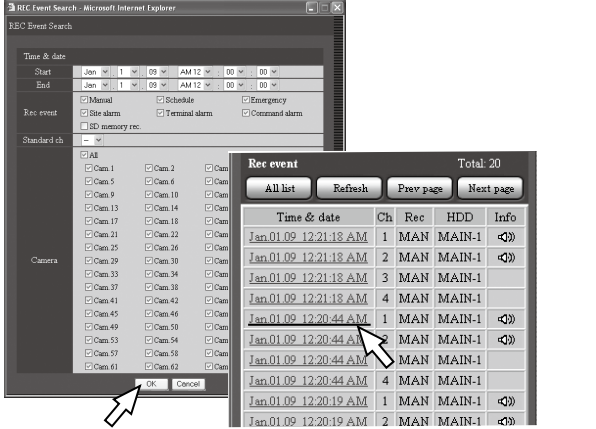
<p>Select the desired camera channel, and then click the [PLAY] button.</p>	<p>→ Playback of recorded images will start. The  indication will be displayed in the status display area.</p> <ul style="list-style-type: none"> <li>• Playback will resume from the end point (time and date) of the last playback.</li> </ul>	
<p>To stop playback, click the [STOP] button.</p>	<p>→ The  indication will disappear and live images from the camera will be displayed.</p>	
<p>Click the [Go to date] button on the playback point operation area.</p>	<p>→ The "Go to date" window will be displayed.</p>	
<p>Select the time and date by clicking the [V] button, and then click the [Play] button.</p>	<p>→ Playback of the corresponding recorded images will start and the  indication will be displayed in the status display area.</p>	

It is possible to perform playback operation on the [HDD] tab.

<ol style="list-style-type: none"> <li>① <b>[FF]/[REW]</b>: Perform fast playback or fast reverse playback. Each time the button is clicked, the playback speed will change as follows. (Approx. 4x → 8x → 16x → 32x → 48x → 96x)</li> <li>② <b>[NEXT RECORD]/[PREV RECORD]</b>: Skip to the next or previous recorded image and play it.</li> <li>③ <b>[NEXT IMAGE]/[PREV IMAGE]</b>: Display the next or previous frame when this button is clicked during playback/pausing.</li> </ol>	<p><b>[HDD] Tab</b></p> 
---	---

## ■ Search and play recorded images

It is possible to search and play recorded events (REC event search).

<p>Click the [Control] button, and then click the [Search] button in the [Search] box.</p> <ul style="list-style-type: none"> <li>• The "Select search method" window will be displayed.</li> </ul>																																																																			
<p>Click the [REC event search] button.</p> <ul style="list-style-type: none"> <li>• The "REC event search" window will be displayed.</li> </ul>																																																																			
<p>Narrow the search by selecting the recording event type. Designate the time range ("Start" and "End" of "Time &amp; date"), "Rec event" and "Camera" to filter the search and then click the [OK] button.</p> <ul style="list-style-type: none"> <li>• The "FILTERING" indication will be displayed in the status display area, and then the search results will be displayed on the list display area.</li> <li>• Click the [All list] button to cancel to start searching.</li> </ul>	 <table border="1" data-bbox="1106 1715 1417 1989"> <thead> <tr> <th colspan="2">Time &amp; date</th> <th>Ch</th> <th>Rec</th> <th>HDD</th> <th>Info</th> </tr> </thead> <tbody> <tr> <td>Jan 01 09</td> <td>12:21:18 AM</td> <td>1</td> <td>MAN</td> <td>MAIN-1</td> <td>⏪</td> </tr> <tr> <td>Jan 01 09</td> <td>12:21:18 AM</td> <td>2</td> <td>MAN</td> <td>MAIN-1</td> <td>⏪</td> </tr> <tr> <td>Jan 01 09</td> <td>12:21:18 AM</td> <td>3</td> <td>MAN</td> <td>MAIN-1</td> <td>⏪</td> </tr> <tr> <td>Jan 01 09</td> <td>12:21:18 AM</td> <td>4</td> <td>MAN</td> <td>MAIN-1</td> <td>⏪</td> </tr> <tr> <td>Jan 01 09</td> <td>12:20:44 AM</td> <td>1</td> <td>MAN</td> <td>MAIN-1</td> <td>⏪</td> </tr> <tr> <td>Jan 01 09</td> <td>12:20:44 AM</td> <td>2</td> <td>MAN</td> <td>MAIN-1</td> <td>⏪</td> </tr> <tr> <td>Jan 01 09</td> <td>12:20:44 AM</td> <td>3</td> <td>MAN</td> <td>MAIN-1</td> <td>⏪</td> </tr> <tr> <td>Jan 01 09</td> <td>12:20:44 AM</td> <td>4</td> <td>MAN</td> <td>MAIN-1</td> <td>⏪</td> </tr> <tr> <td>Jan 01 09</td> <td>12:20:19 AM</td> <td>1</td> <td>MAN</td> <td>MAIN-1</td> <td>⏪</td> </tr> <tr> <td>Jan 01 09</td> <td>12:20:19 AM</td> <td>2</td> <td>MAN</td> <td>MAIN-1</td> <td>⏪</td> </tr> </tbody> </table>	Time & date		Ch	Rec	HDD	Info	Jan 01 09	12:21:18 AM	1	MAN	MAIN-1	⏪	Jan 01 09	12:21:18 AM	2	MAN	MAIN-1	⏪	Jan 01 09	12:21:18 AM	3	MAN	MAIN-1	⏪	Jan 01 09	12:21:18 AM	4	MAN	MAIN-1	⏪	Jan 01 09	12:20:44 AM	1	MAN	MAIN-1	⏪	Jan 01 09	12:20:44 AM	2	MAN	MAIN-1	⏪	Jan 01 09	12:20:44 AM	3	MAN	MAIN-1	⏪	Jan 01 09	12:20:44 AM	4	MAN	MAIN-1	⏪	Jan 01 09	12:20:19 AM	1	MAN	MAIN-1	⏪	Jan 01 09	12:20:19 AM	2	MAN	MAIN-1	⏪
Time & date		Ch	Rec	HDD	Info																																																														
Jan 01 09	12:21:18 AM	1	MAN	MAIN-1	⏪																																																														
Jan 01 09	12:21:18 AM	2	MAN	MAIN-1	⏪																																																														
Jan 01 09	12:21:18 AM	3	MAN	MAIN-1	⏪																																																														
Jan 01 09	12:21:18 AM	4	MAN	MAIN-1	⏪																																																														
Jan 01 09	12:20:44 AM	1	MAN	MAIN-1	⏪																																																														
Jan 01 09	12:20:44 AM	2	MAN	MAIN-1	⏪																																																														
Jan 01 09	12:20:44 AM	3	MAN	MAIN-1	⏪																																																														
Jan 01 09	12:20:44 AM	4	MAN	MAIN-1	⏪																																																														
Jan 01 09	12:20:19 AM	1	MAN	MAIN-1	⏪																																																														
Jan 01 09	12:20:19 AM	2	MAN	MAIN-1	⏪																																																														
<p>To stop playback, click the [STOP] button.</p>																																																																			