

Monitoring Software **WV-ASM100 Series** Introduction of Version 8



26/January/2011

Security & AV Systems Business Unit
Panasonic System Networks Company

- ◆ WJ-NV200 and new i-PRO SmartHD cameras support
- ◆ Internet mode support (for Panasonic DVR/NVR)
 - RTP over HTTP receiving from following Panasonic recorders
 - WJ-HD616, WJ-HD716 (since Ver.2.04)
 - WJ-NV200 (since Ver.1.04, Jan/2011)
- ◆ Camera Capability (Panasonic PTZ camera) support
- ◆ Operational improvements
 - Improvement for terminal alarm handling of NWDR
 - CU950 +/- keys support
 - Error message at camera preset registration

Schedule: End of January 2011 (providing firmware)

February 2011 (production)

Outline

1. NV200 and New Camera Support

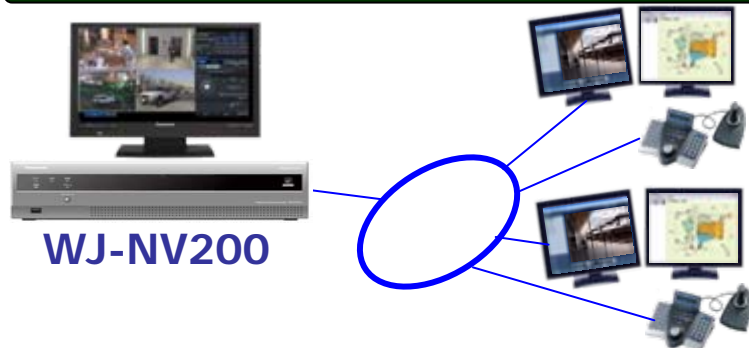
SmartHD NVR WJ-NV200 and new cameras start to be supported.



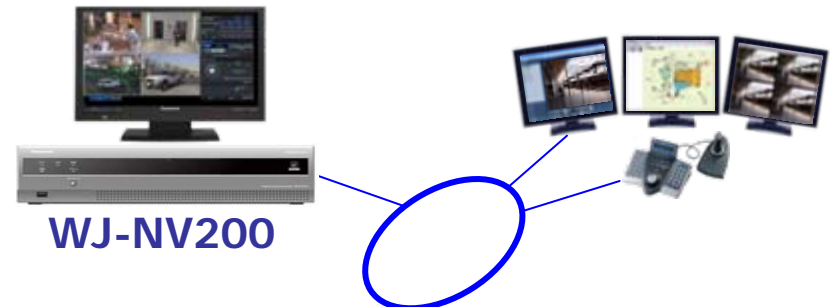
•NV200 has only two UIDs for network client connection.

It means that up to two ASM100 can connect to one NV200 at the same time with only operation window. It also means that only one ASM100 can connect to one NV200 at the same time with monitoring window and operation window.

Two ASM100's **without** monitoring window



One ASM100 with monitoring and operation window

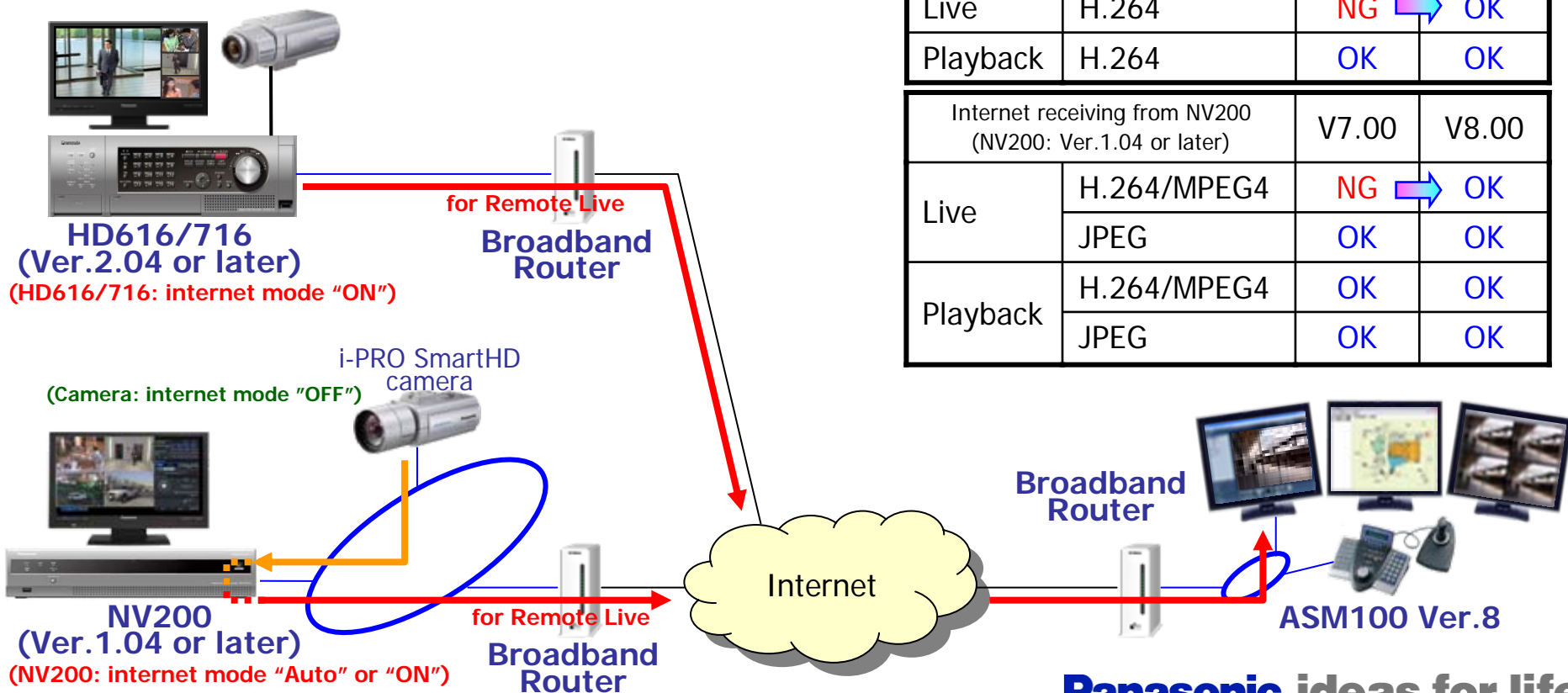


2. Internet mode support

ASM100 Ver.8 supports RTP over HTTP video stream receiving (internet mode) from WJ-HD616, WJ-HD716 and WJ-NV200.

- Live image receiving via internet is to be possible. (HD616/716)
- Live H.264/MPEG4 image receiving via internet is to be possible. (NV200)

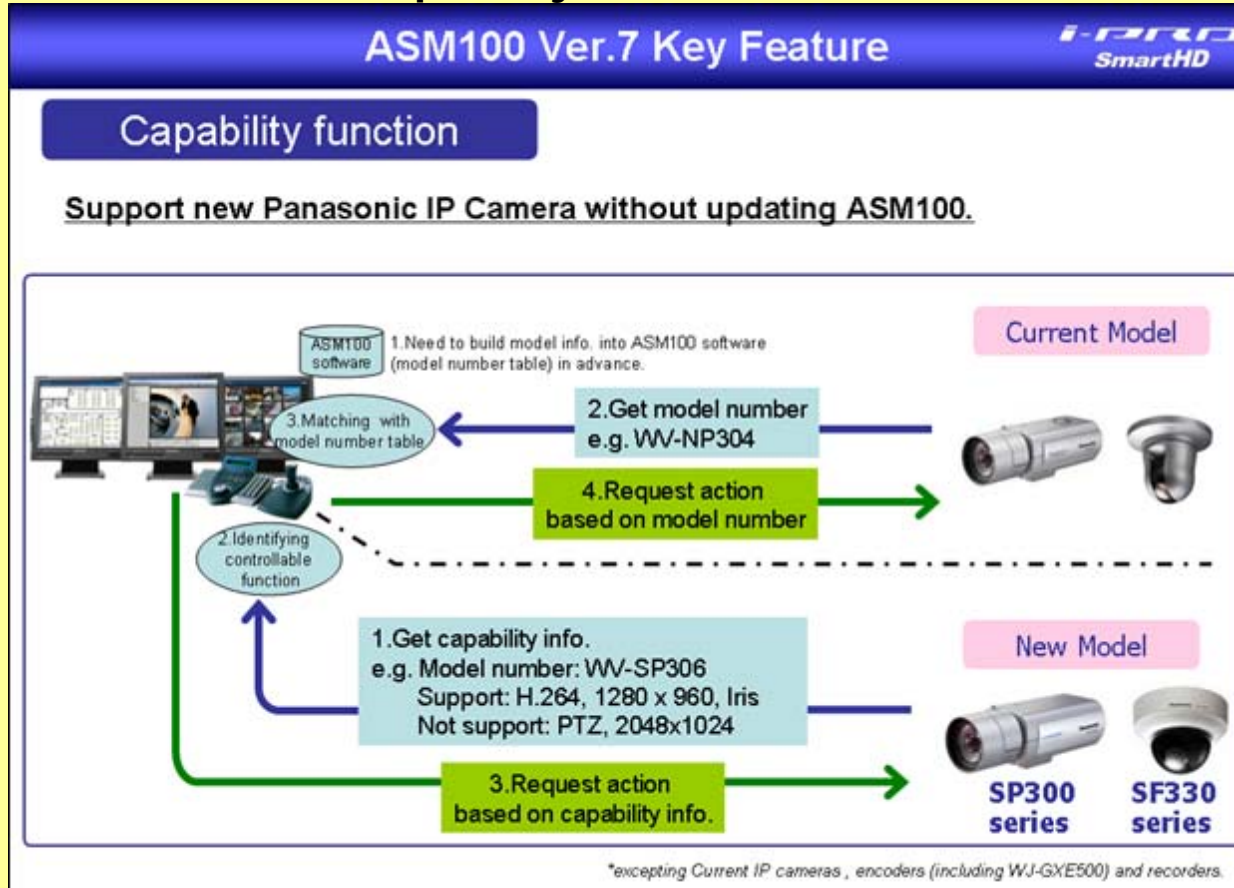
		ASM100 ver.	
Internet receiving from HD616/716 (HD616/716: Ver.2.04 or later)		V7.00	V8.00
Live	H.264	NG → OK	
Playback	H.264	OK	OK
Internet receiving from NV200 (NV200: Ver.1.04 or later)		V7.00	V8.00
Live	H.264/MPEG4	NG → OK	
	JPEG	OK	OK
Playback	H.264/MPEG4	OK	OK
	JPEG	OK	OK



3. Camera Capability Support

Since ASM100 Ver.7, capability for fixed cameras had been supported.
Since ASM100 Ver.8, capability for PTZ cameras starts to be supported.

[About "camera capability" information]



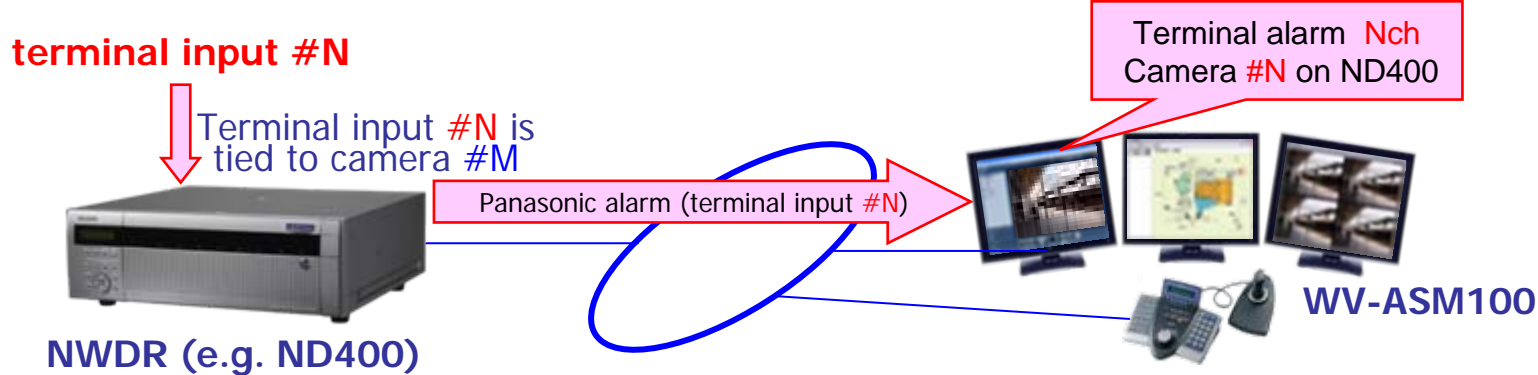
Supporting this function, future Panasonic cameras can be registered into ASM100 without any more upgrade.

4. Operational Improvements

(1) Improvement for terminal alarm handling of NVR

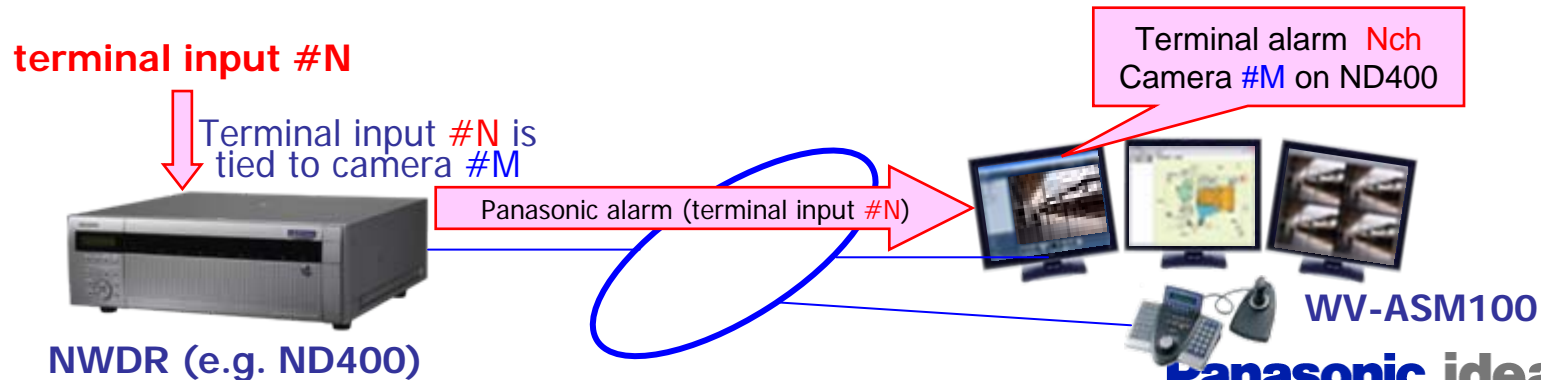
Until ASM100 Version 7,

terminal input "N" always calls the alarm of camera number "N" at ASM100 side, even if terminal input "N" is tied to camera number "M" at NWDR side.



Since ASM100 Version 8,

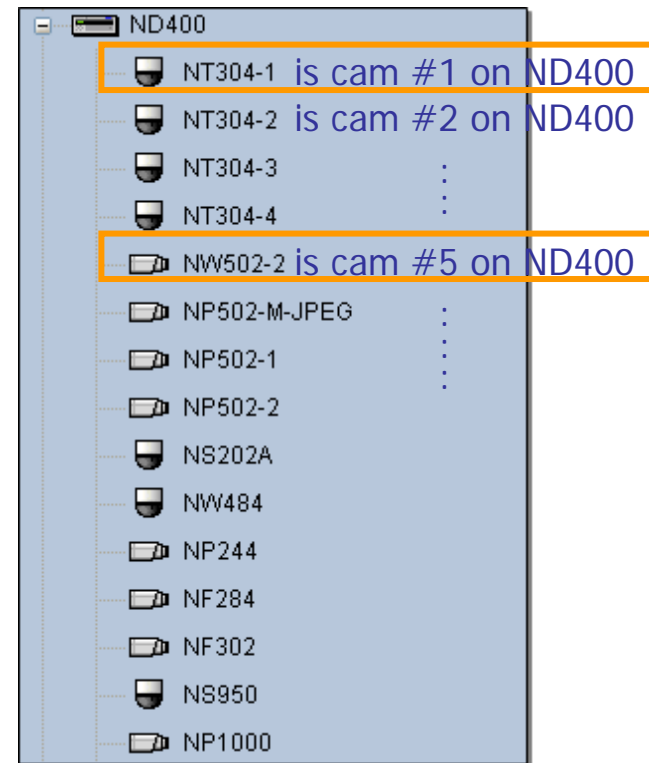
terminal input "N" can call the alarm of camera number "M" at ASM100 side, if terminal input "N" is tied to camera number "M" at NWDR side.



4. Operational Improvements

(1) Improvement for terminal alarm handling of NVR (continued) – case study

Terminal	Rec. cam.	Preset position	Output terminal
1	Cam.5		On
2	Cam.2		On
3	Cam.3		On
4	Cam.4		On
5	Cam.1		On
6	Cam.6		On
7	Cam.7		On
8	Cam.8		On
9	Cam.9		On
10	Cam.10		On
11	Cam.11		On
12	Cam.12		On
13	Cam.13		On
14	Cam.14		On
15	Cam.15		On
16	Cam.16		On



and

terminal input #1

Terminal input #1 is tied to camera #5

Panasonic alarm (terminal input #1)



NWDR (e.g. ND400)



WV-ASM100

4. Operational Improvements

(1) Improvement for terminal alarm handling of NVR (continued) – case study

Terminal input #1 is tied to cam #5 on ND400

NT304-1 is cam #1 on ND400

NW502-2 is cam #5 on ND400

WV-ASM100 Ver.7 **DOESN'T** know terminal input #1 is tied to camera #5 on ND400.

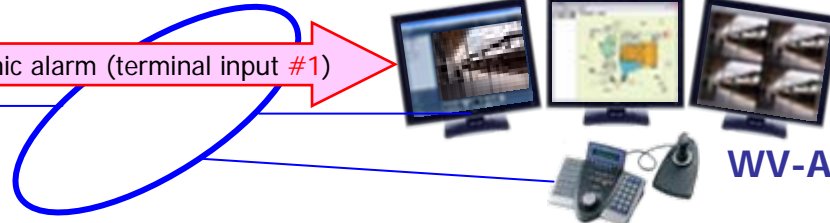
terminal input #1

↓
Terminal input #1 is tied to camera #5



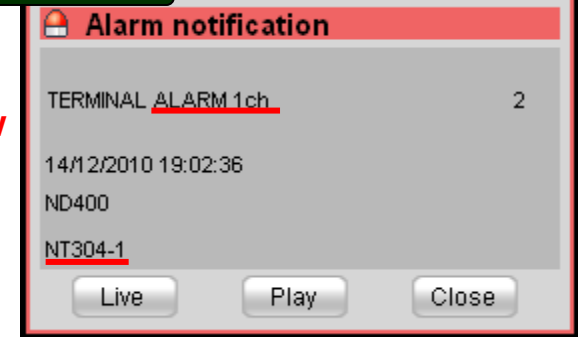
NWDR (e.g. ND400)

Panasonic alarm (terminal input #1)



WV-ASM100

-Ver.7



WV-ASM100 Ver.8 knows terminal input #1 is tied to camera #5 on ND400.

Ver.8-



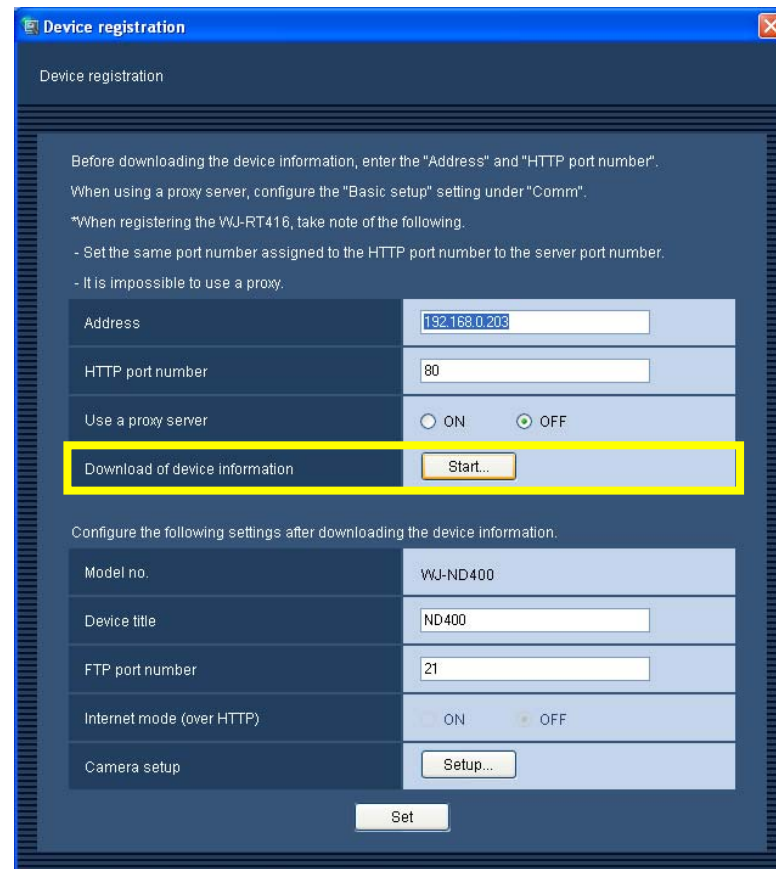
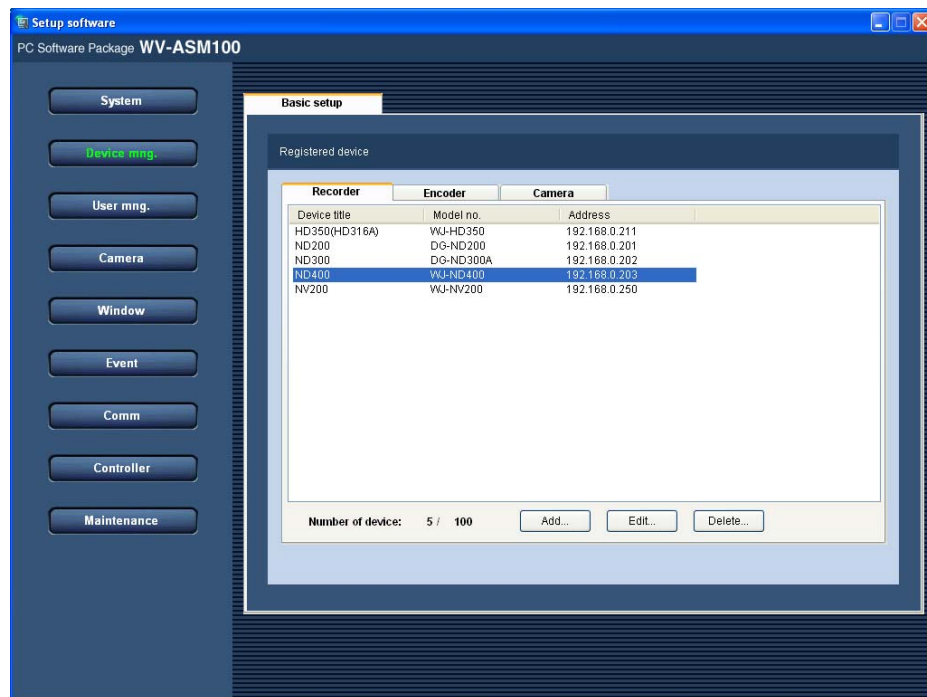
4. Operational Improvements

(1) Improvement for terminal alarm handling of NVR (continued)

Important notification

If software is updated into Ver.8 from previous version, **re-download of device (NVR's) information** on setup software is needed.

ASM100 becomes to know NVR's terminal settings by this operation.

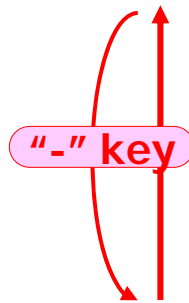


4. Operational Improvements

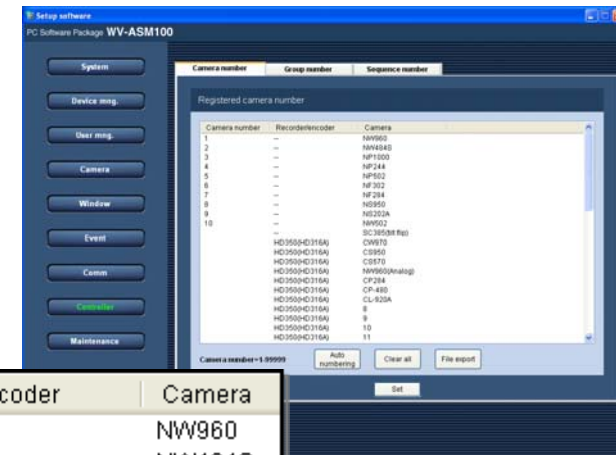
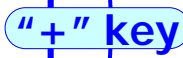
(2) CU950 +/- keys support

+/- keys on WV-CU950 controller can be used for camera channel switching of live image on an operation window.

Camera channel increments (with + key) / decrements (with - key) along camera number setting in setup tool. [Controller – Camera number menu]



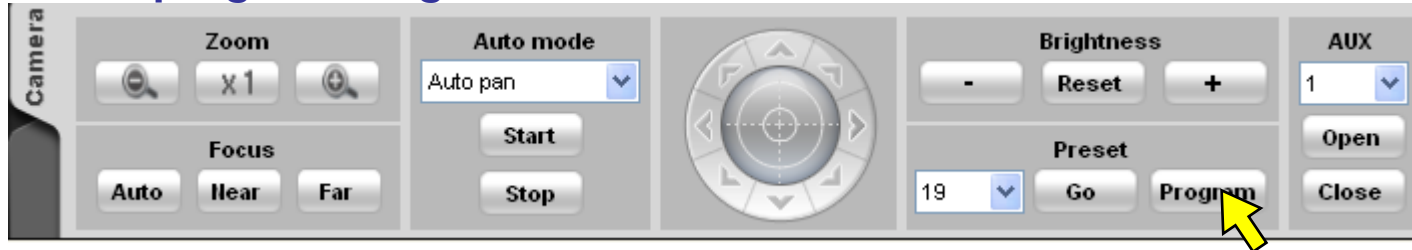
Camera number	Recorder/encoder	Camera
1	--	NW960
2	--	NW484S
3	--	NP1000
4	--	NP244
5	--	NP502
6	--	NF302
7	--	NF284
8	--	NS950
9	--	NS202A
10	--	NW502



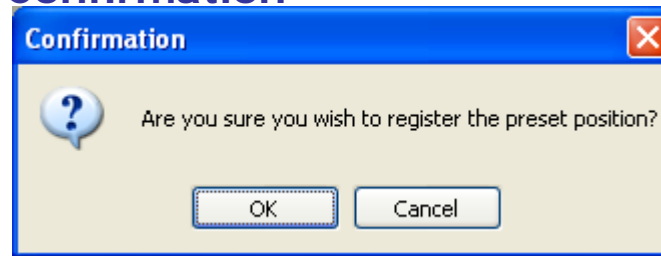
4. Operational Improvements

(3) Error message at camera preset registration

Preset programming



Confirmation



User authentication error happens!

e.g.) In case of
ASM100: ADMIN/12345
Camera: admin/12345

-Ver.7

No error message was displayed.
So an operator could not understand
whether the preset programming succeeded
or not.

Ver.8-

