

Facial Recognition Server Software WV-ASF950 Series Instructions how to upgrade from V1.0x, V2.xx to V3.xx

[Case of upgrade from V1.0x]

When using unregistered face detection function, upgrading with this tool is not possible.

In this case, uninstall WV-ASF950 and PostgreSQL from "Programs and Features" of the control panel, delete the C:\ASF900 folder and C:\PostgreSQL folder, and install V2.xx as new installation.

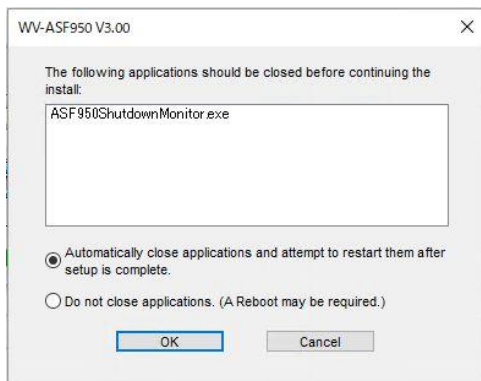
This tool can upgrade in registered face detection mode only.

[Case of upgrade from V2.0x]

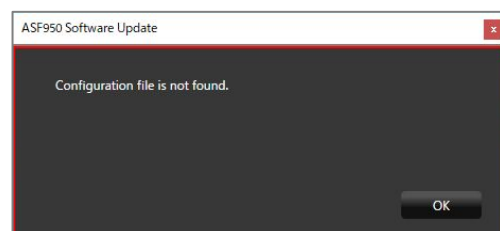
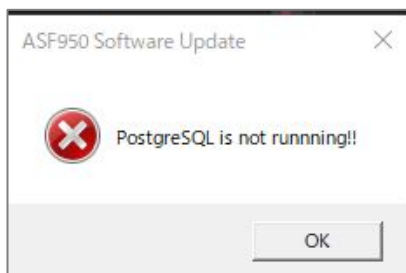
This tool can upgrade in both function (registered face detection or registered face/unregistered face detection)

[Case of upgrade from V1.0x or V2.xx]

After uninstalling the previous version of WV-ASF950, a message to restart PC may be displayed, but please proceed according to the display of the UpdateTool without restarting.



Contact the system administrator or your dealer for further information when the following message is shown "PostgreSQL is not running" or "MDDB backup error" or "Configuration file is not found".



Outline

The upgrade uses the tools as follow;

- ConfigTool : WV-ASF950 ConfigurationTool (Shortcut on desktop)
- Update tool: UpdateTool_for_ASF950_V1_V2_to_V3.xx
 - * Check version file by using notepad, etc. ("C:\ASF900\version")
 - * Do not execute each tool directly from USB memory, etc. Please execute after copying to a local disk such as the Desktop.

Procedure outline:

No	Procedure	Contents	Tool for use
1	Stop the system	Stop the system, and confirm the server type is master or slave server	Config tool
2	Update the system	Copy new files and update system information	Update tool
3	Start the system	Confirm system version and start the system	Config tool
4	Update camera information	Updates the camera information to detect face mask	Config tool

Also, install the Error Notification Tool on any PC to check the server operation status.

* If the version is less than 2.00, start from installation. In the case of version 2.10 or later, it is necessary to uninstall the existing Error Notification Tool. The registered server information will remain after uninstallation, so not need to register the server again after installing the latest version.

Procedure outline:

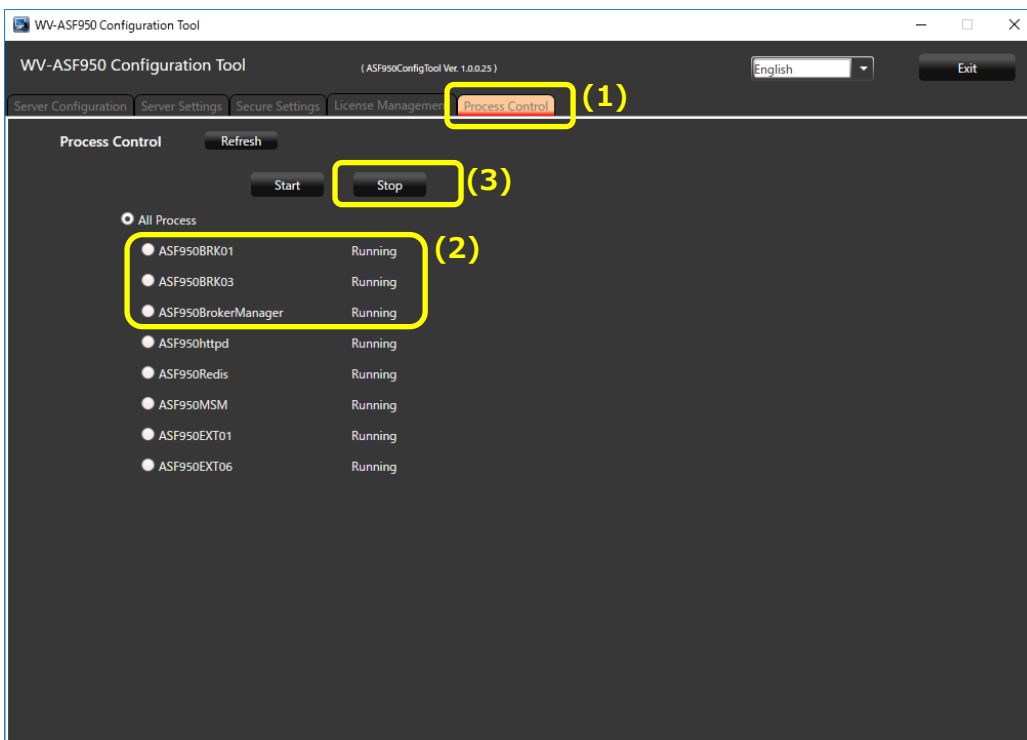
No	Procedure	Contents	Target version
1	Uninstall	Uninstall the previous version of the Error Notification Tool.	2.10 or later
2	Install	Install the Error Notification Tool on any PC.	All version
3	Register server	Register the server in the Error Notification Tool.	Less than 2.00

Update server software on each server PC.



1. Stop the system

- (1) Run “WV-ASF950 Configuration Tool” and click “Process Control” tab.
- (2) Check whether the server type is master server or slave server.
“Not Installed” is shown in the rectangle (2) of following figure, this is slave server.
Otherwise this is master server.
(The following figure is a sample of master server)
- (3) Make sure “All Process” is selected, then click “Stop” button.



- (4) Make sure all processes are “Stopped”, then click “Exit” button.

1

2

3

4

2. Update the system

Contig is a defragmentation tool provided by Microsoft. Confirm that Contig is already installed in the following folder "C:\Contig\Contig64.exe"

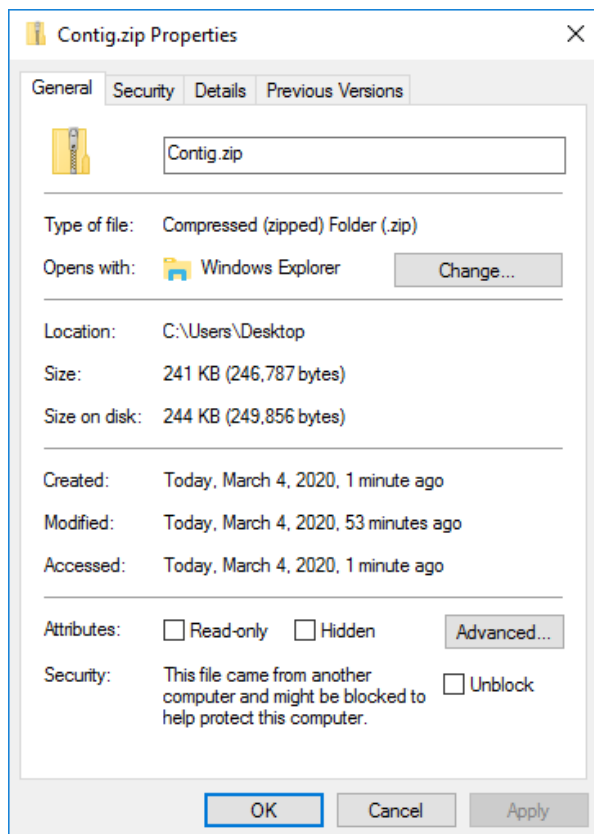
If Contig is already installed, execute the procedure (1).

If not, download Contig from the following URL on the PC that can connect to the Internet.

Note) Use Contig version 1.8.0.0 or later.

URL : <https://docs.microsoft.com/en-us/sysinternals/downloads/contig>

Note) If the following screen appears when you right-click Contig.zip and open the properties screen, check "Unblock" and click "OK" to unzip it.



Download and unzip the Contig.zip to "C:\Contig\Contig64.exe" on the server.

Note) There is no need to run Contig64.exe. After updating by the update tool, it will be executed automatically every Monday at 4:00. This tool is required for optimal defragmentation, and WV-ASF950 cannot be updated without Contig.

Execute Copy new files and update system information by update tool.

(1) Run "ASF950UpdateTool.exe" in the folders of "UpdateTool_for_ASF950_V1_V2_to_V3.xx\04_Tools" folder.

* Please execute after copying to a local disk such as the Desktop

Contact the system administrator or your dealer for further information when the following message is shown "PostgreSQL is not running" or "MDDB backup error" or "Configuration file is not found".

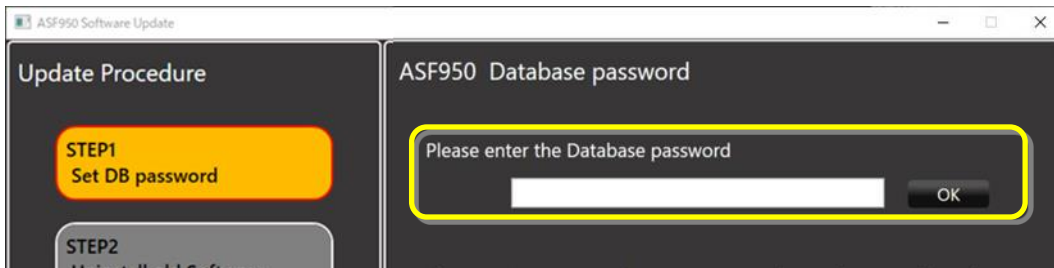


(2) Enter / confirm the database password

[Case of upgrade from V1.0x]

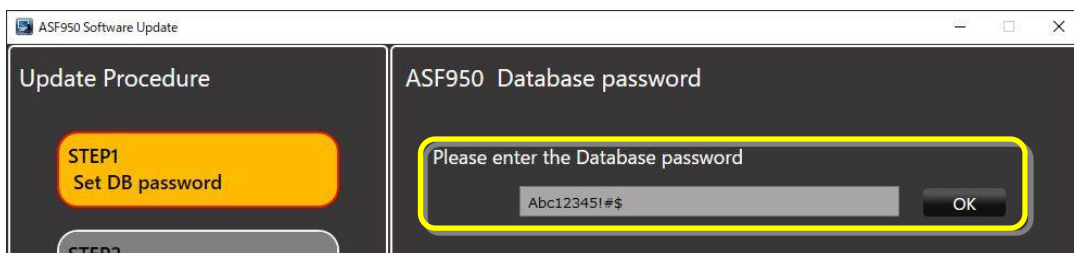
Set a new database password in "ASF950 Database password".

- Enter 8 - 32 characters
- Three or more types of characters from uppercase alphabetic characters, lowercase alphabetic characters, numbers, and symbols.
- Input capital letters and lower case letters separately.

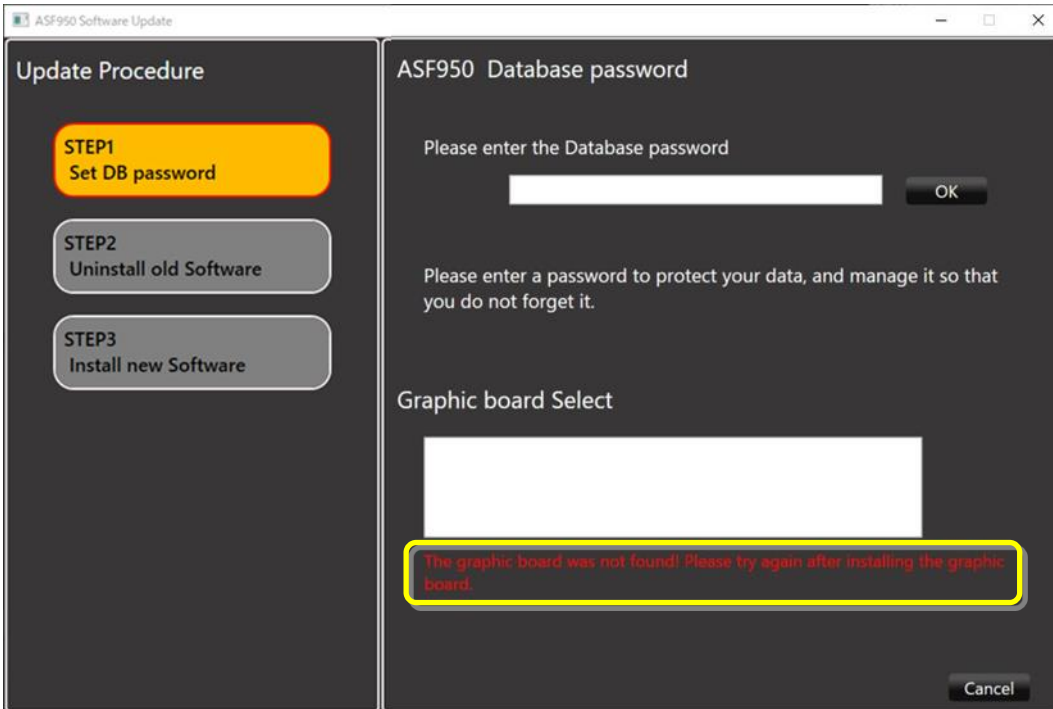


[Case of upgrade from V2.xx]

The password for the database that has already been set will be displayed. Confirm that the password is correct.

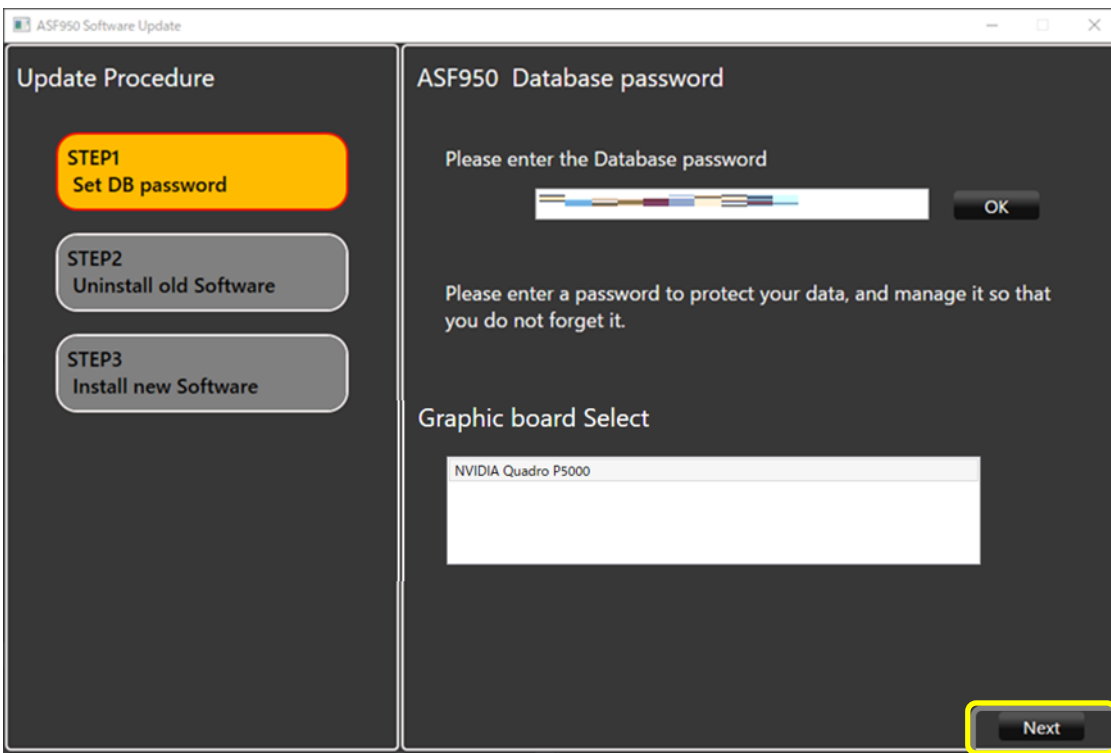


- (3) Graphic board Select displays a list of GPUs used by the server.
If the driver is not supported, a [Cancel] button with a warning will be displayed.

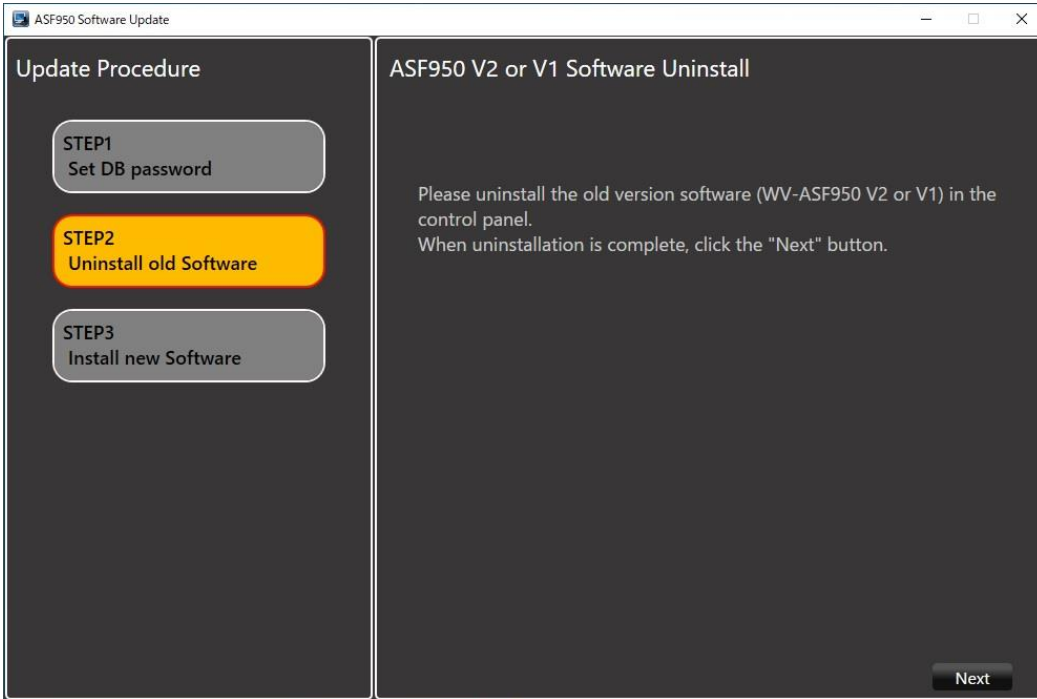


After updating the driver version to 425.31 or higher, start the advanced tool again.

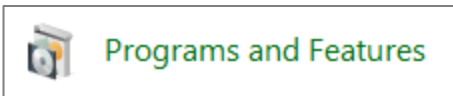
- (4) Click "Next" button



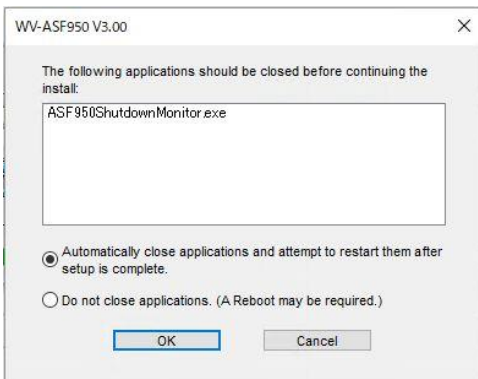
(5) The uninstall window is displayed.



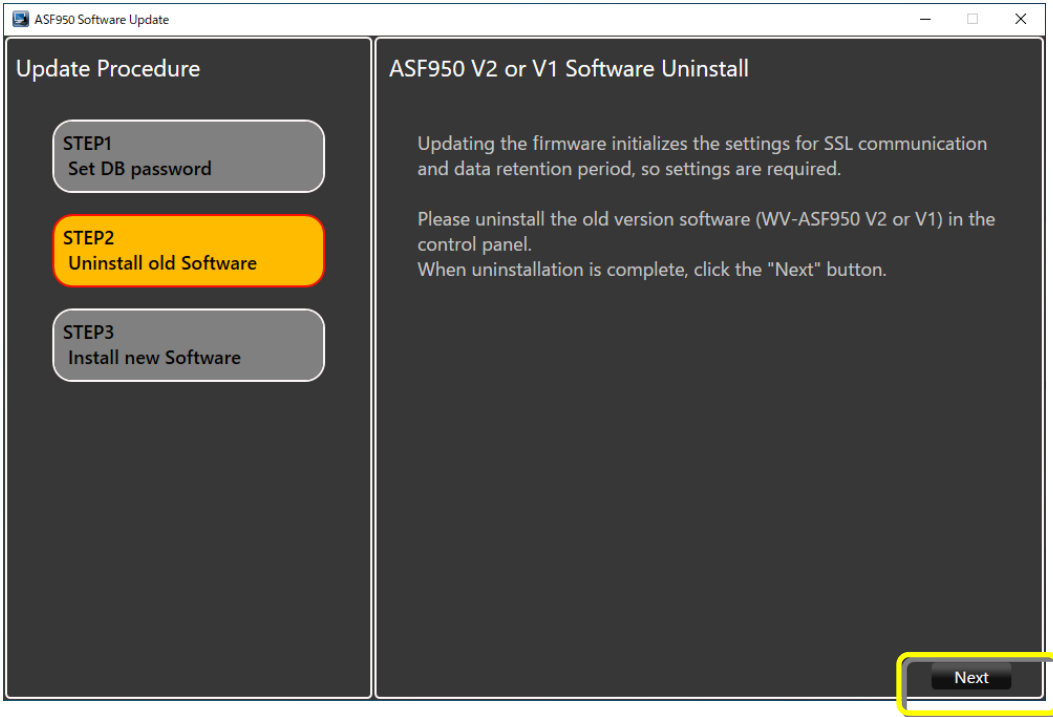
Uninstall "WV-ASF950 V1.0x" from "Programs and Features" of the control panel.



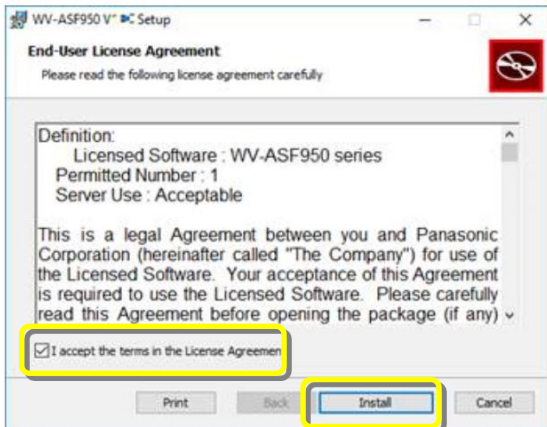
After uninstalling the previous version of WV-ASF950, a message to restart PC may be displayed, but please proceed according to the display of the UpdateTool without restarting.



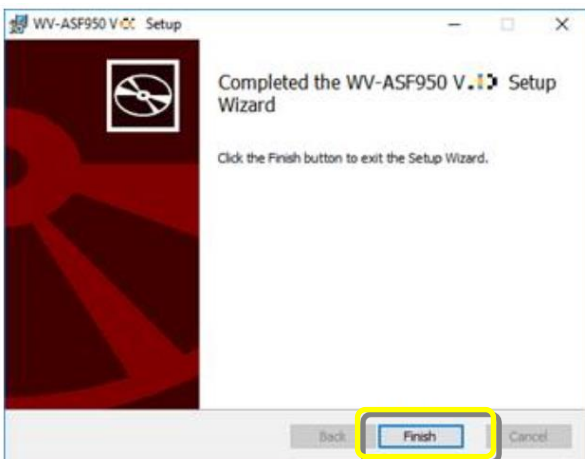
(6) After uninstalling, click the Next button.



(7) Put a check mark on "I accept the terms in the License Agreement" and then click the [Install] button.

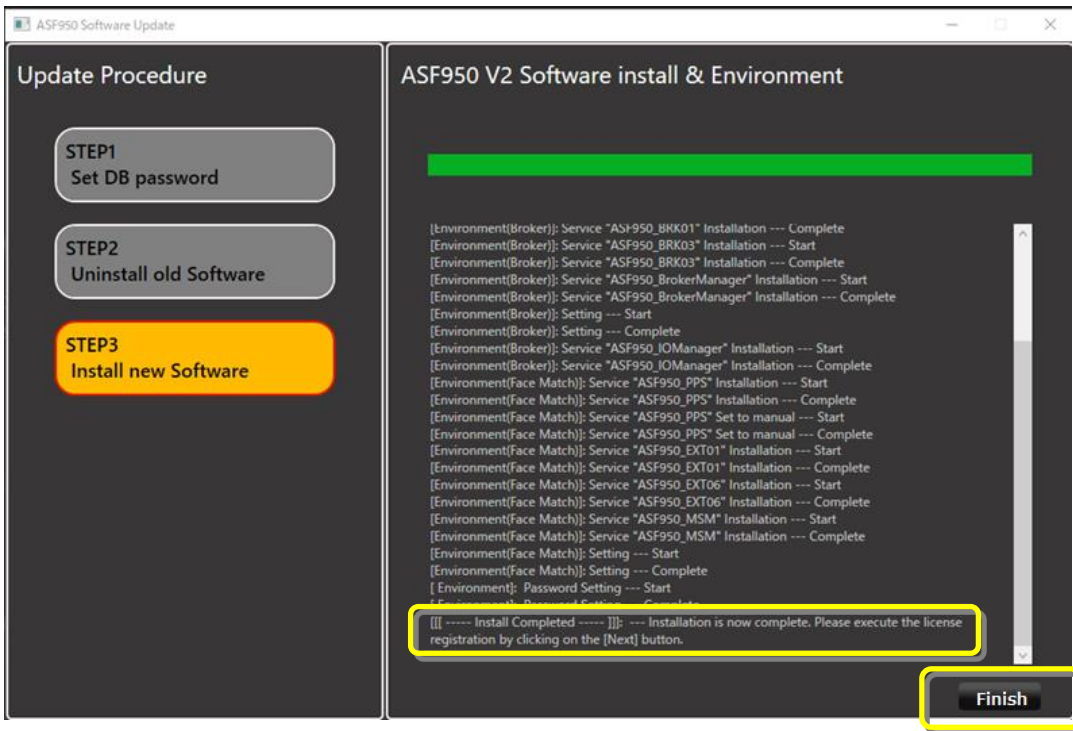


(8) Click the [Finish] button to complete the installation.

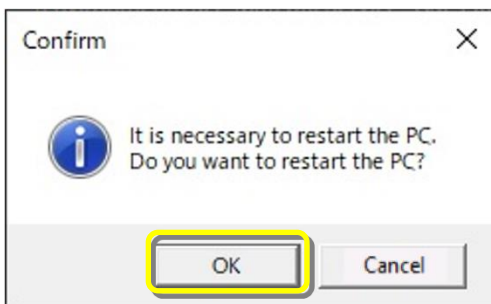


(9) Installation and configuration of the new software will begin.

When "Install Completed" is displayed and the installation is completed, click the Finish button to finish the upgrade.



(10) Follow the instructions in the dialog to restart server PC.



1

2

3

4

3. Start the system

- (1) Run “WV-ASF950 Configuration Tool”
- (2) Check that config tool version is “V3.xx.x.xxxx”.
And check that server version is “V3.xx”

[Master server]

1. Check the Broker server version.

The screenshot shows the WV-ASF950 Configuration Tool interface. The 'Broker Node' dropdown is set to 192.168.0.215. In the left sidebar, 'Broker [192.168.0.215]' is selected. The 'Node Information' panel shows the following details:

- Node type: Broker (v3.1)
- IP Address: 192.168.0.215
- Port No.: 80
- MAC Address: 18:60:24:87:9A:1F

The 'Node List' table is displayed below:

No.	Server ID	Node No.	Node type	IP Address	Port No.
01	2	1	Face Matching Node	192.168.0.215	80
02	3	2	Face Matching Node	192.168.0.216	80

2. Check the Face Matching server (FM1) version.

The screenshot shows the WV-ASF950 Configuration Tool interface. The 'Broker Node' dropdown is set to 192.168.0.215. In the left sidebar, 'FM1 [192.168.0.215]' is selected. The 'Node Information' panel shows the following details:

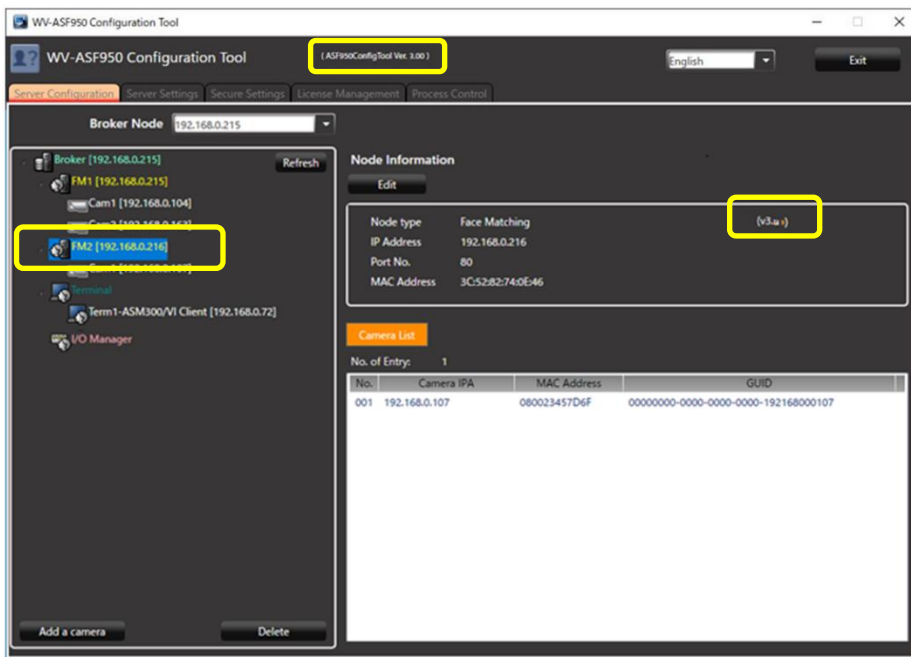
- Node type: Face Matching (v3.1)
- IP Address: 192.168.0.215
- Port No.: 80
- MAC Address: 18:60:24:87:9A:1F

The 'Camera List' table is displayed below:

No.	Camera IP	MAC Address	GUID
001	192.168.0.104	080023F2422	00000000-0000-0000-0000-192168000104
002	192.168.0.163	BCC34271CCF3	00000000-0000-0000-0000-192168000163

[Slave server]

Check the Face Matching server (FM2 or later) version.



- (3) Run "WV-ASF950 Configuration Tool" and click "Process Control" tab. Make sure all processes are "Running", then click "Exit" button.

1

2

3

4

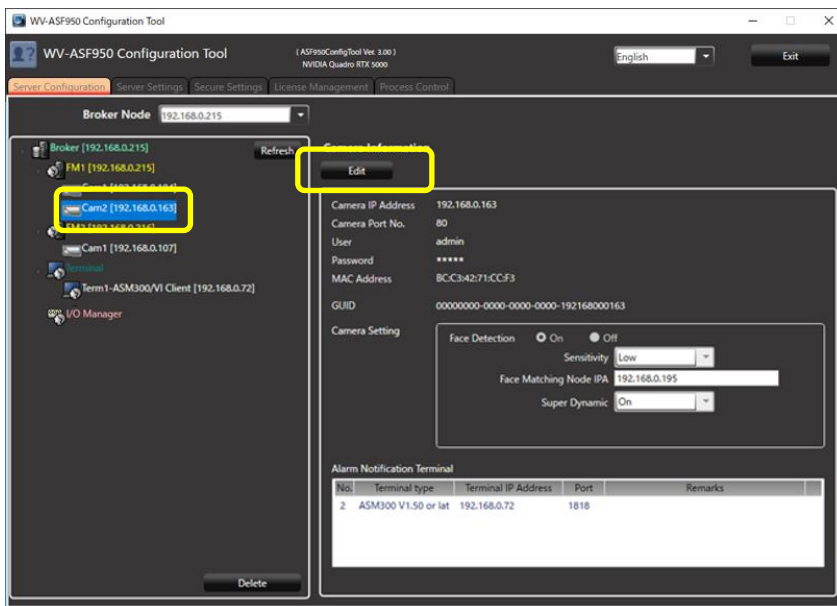
4. Update camera information

When using the face mask detection function of the camera (supported cameras only in i-PRO EXTREME series), it is necessary to update the camera information after camera firmware is updated in V2.00 or later.

(1) Run “WV-ASF950 Configuration Tool” **on master server.**

(2) Select “Server Configuration” tab.

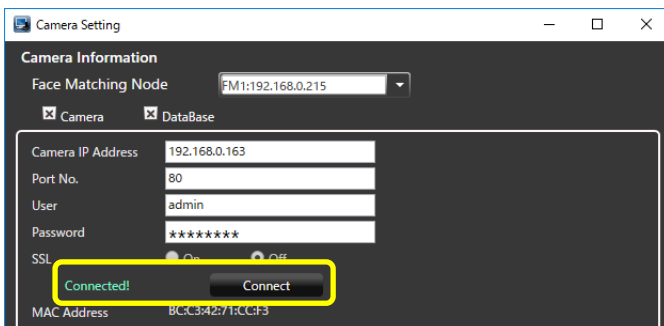
Select camera in device tree for updating information and click “Edit” button.



Camera setting window is shown.

(3) Click “Connect” button.

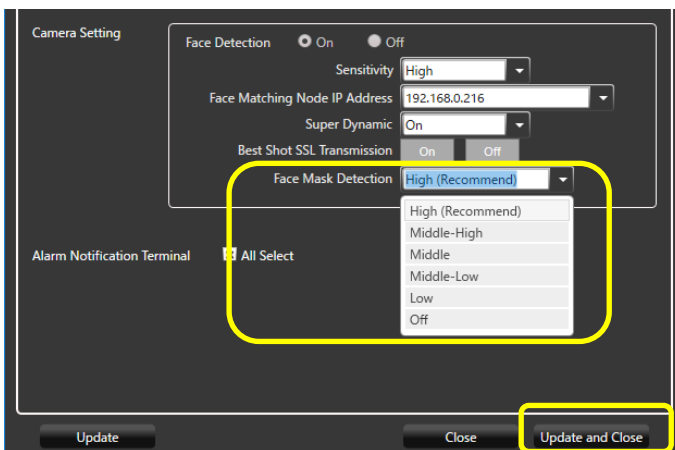
“Connected” is shown, and configuration tool connects the camera and gets camera information.



Face Mask Detection menu is shown. Select Face Mask Detection level in pull-down menu.

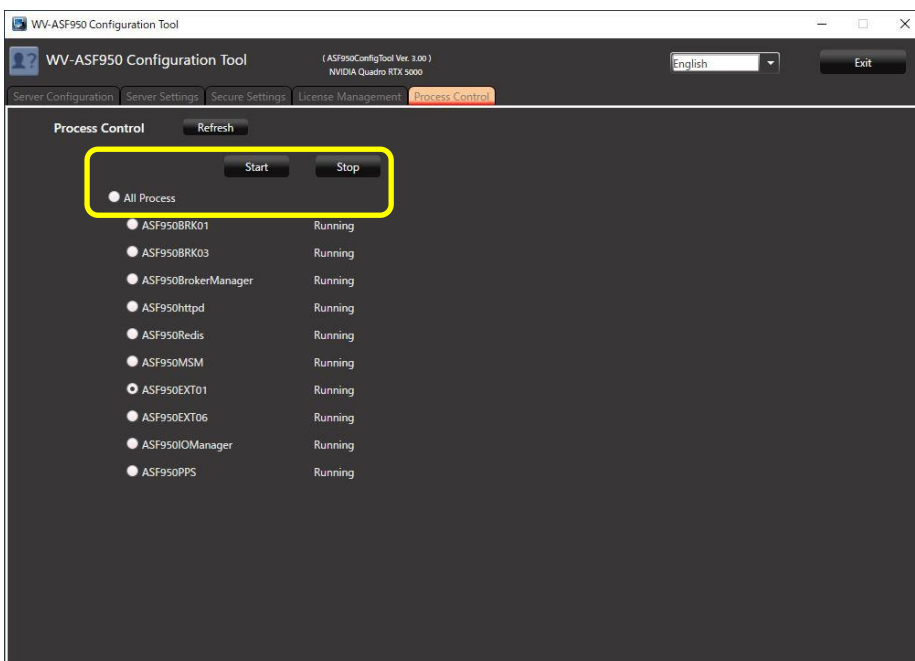
* High level is recommended.

And Click “Update and Close” button.



(4) Repeat steps (2)-(3) for other cameras as well.

(5) On “Process Control” tab, stop all processes and start them in order to reflect the setting.



(6) If there is **another slave server**, stop all processes and start them again.

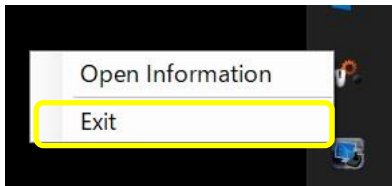
Update Error Notification Tool on the client PC on which this tool is installed.



1. Uninstall

Execute this step only when there is a previous version of the Error Notification Tool (Version 2.32 or older).

- (1) Right-click the icon displayed in the lower right corner of the Desktop, click "Exit", and click "Yes" on the exit confirmation message to exit the tool.



- (2) Select [Control Panel]-[Uninstall a program] or [Programs and Features].
- (3) Select "WV-ASF950 Error Notification Tool" from the programs displayed in the [Uninstall or change a program] window, and click the "Uninstall" button.
- (4) Follow the on-screen instructions to uninstall.

* Not need to restart the PC after uninstalling.

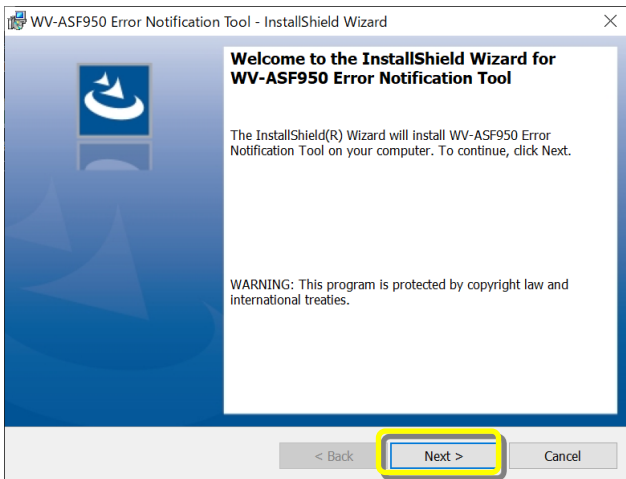


2. Install

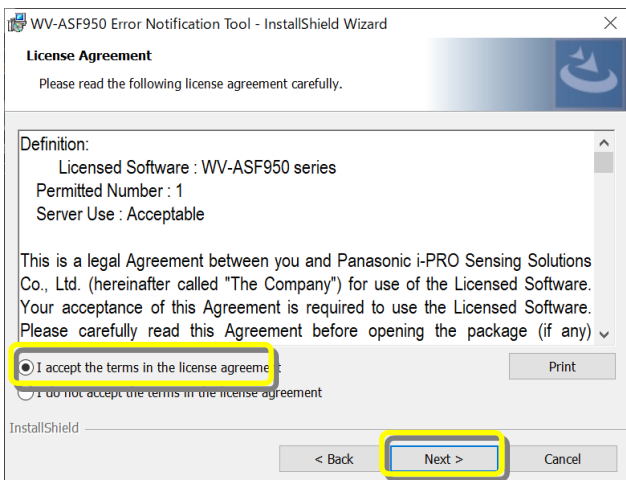
- (5) Copy the “UpdateTool_for_ASF950_V1_V2_to_V3.xx \Error Notification Tool” folder to the PC which is registered as terminal in WV-ASF950 Configuration Tool.
- (6) Execute “WV-ASF950_Error_Notification_Tool_Setup_vnnnn.exe” in the “Error Notification Tool” folder.

- * nnnn contains version information.
- * Choose the installer as your preferred display language.
(vnnnn.exe: English version, vnnnnJ.exe: Japanese version.)

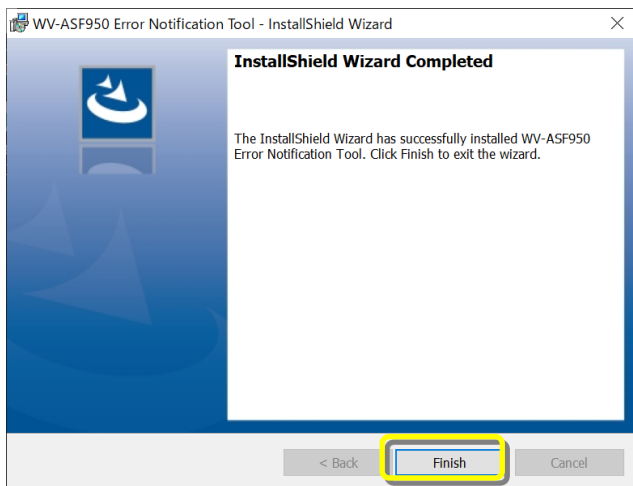
- (7) Click “Next >” button.



- (8) Select “I accept the terms in the license agreement” and click “Next >” button.



(9) Installation of the Error Notification Tool starts. When the installation is completed, click the "Finish" button to finish.





3. Register server

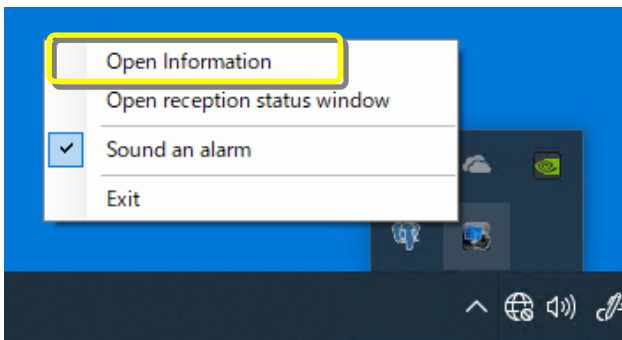
Perform this procedure when performing a new installation (less than version 2.00) or when changing the system configuration.

* In the case of version 2.10 or later, the registered server information will remain after uninstallation, so not need to register the server again after installing the latest version.

(1) Double-click "WV-ASF950 Error Notification Tool" on the Desktop to start.

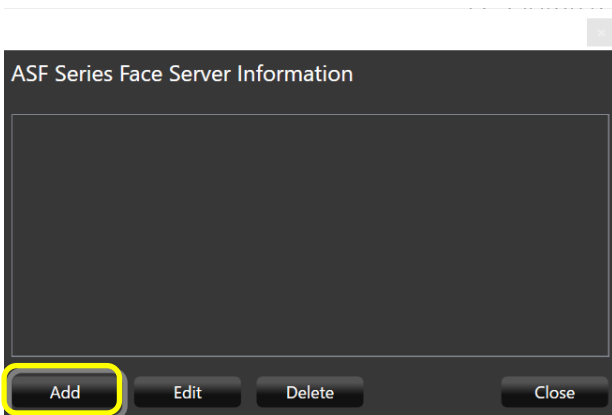
* It does not start automatically, so please execute the tool from the shortcut after installation.

(2) Right-click the icon displayed in the task tray and click "Open Information".The Error Notification Tool window will be displayed.

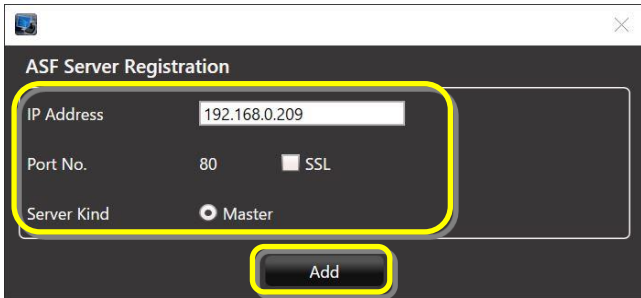


(3) Click "Add" button.

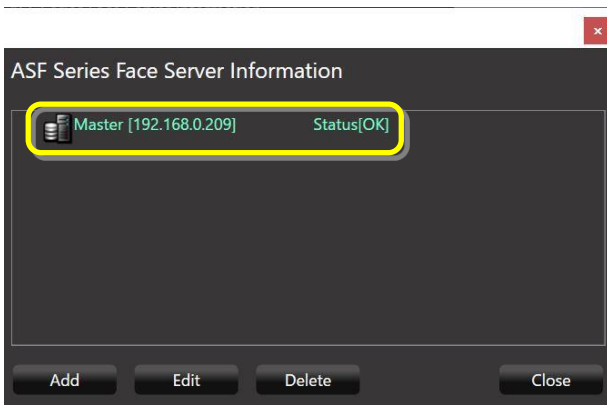
Server Registration window will be displayed.



- (4) Enter the IP address.
If SSL is on for the server, check "SSL".
Make sure that "Master" is checked at the server type.
After setting, click "Add" button.



Confirm that the registered master server is added to the Error Notification Tool window and "Status [OK]" is displayed.



If the status does not change to "OK", please check that the IP address is correct and there is no problem with the network device, and that the service process of the facial recognition server is running.

- (5) If there is another master server or slave server, add the server by following steps (3)-(4). To add a slave server, select the master server and click the "Add" button.