

Panasonic

Network Disk Recorder IP Quick Setup Tool

Operating Instructions

Model Nos. **WJ-ND200K, WJ-ND200K/G**
WJ-ND300, WJ-ND300A

Before attempting to connect or operate this product,
please read these instructions carefully and save this manual for future use.

The model number is abbreviated in some descriptions in this manual.

Contents

Limitation of Liability	3
Disclaimer of Warranty	3
Network Security	3
Precaution	4
Preface	4
System Configuration	4
System Requirements for a PC	6
Trademarks and Registered Trademarks	6
Abbreviations	6
Start/Exit the Software	7
Main Window	8
Icons in the Tree Display Area	9
Operation Flow	10
Detect WJ-ND300 (A)/Cameras and Confirm the Current Settings	12
Arrange the Camera Number by Moving/Deleting the Camera Icon	14
Move a camera icon	14
Delete a camera icon	15
Edit the Settings	17
Register the WJ-ND300 (A) and Cameras, and Confirm the Result (CAM IP Auto Addressing)	18
Register the WJ-ND300 (A) and Cameras, and Confirm the Result (Manual Registration)	20
Detect WJ-ND200/Cameras and Confirm the Current Settings	22
Tips to Configure the Settings	24
Troubleshooting	25

Limitation of Liability

THIS PUBLICATION IS PROVIDED "AS IS" WITHOUT WARRANTY OF ANY KIND, EITHER EXPRESS OR IMPLIED, INCLUDING BUT NOT LIMITED TO, THE IMPLIED WARRANTIES OF MERCHANTABILITY, FITNESS FOR ANY PARTICULAR PURPOSE, OR NON-INFRINGEMENT OF THE THIRD PARTY'S RIGHT. THIS PUBLICATION COULD INCLUDE TECHNICAL INACCURACIES OR TYPOGRAPHICAL ERRORS. CHANGES ARE ADDED TO THE INFORMATION HEREIN, AT ANY TIME, FOR THE IMPROVEMENTS OF THIS PUBLICATION AND/OR THE CORRESPONDING PRODUCT (S).

Disclaimer of Warranty

IN NO EVENT SHALL Panasonic Corporation BE LIABLE TO ANY PARTY OR ANY PERSON, EXCEPT FOR REPLACEMENT OR REASONABLE MAINTENANCE OF THE PRODUCT, FOR THE CASES, INCLUDING BUT NOT LIMITED TO BELOW:

- (1) ANY DAMAGE AND LOSS, INCLUDING WITHOUT LIMITATION, DIRECT OR INDIRECT, SPECIAL, CONSEQUENTIAL OR EXEMPLARY, ARISING OUT OF OR RELATING TO THE PRODUCT;
- (2) PERSONAL INJURY OR ANY DAMAGE CAUSED BY INAPPROPRIATE USE OR NEGLIGENT OPERATION OF THE USER;
- (3) UNAUTHORIZED DISASSEMBLE, REPAIR OR MODIFICATION OF THE PRODUCT BY THE USER;
- (4) ANY PROBLEM, CONSEQUENTIAL INCONVENIENCE, OR LOSS OR DAMAGE, ARISING OUT OF THE SYSTEM COMBINED BY THE DEVICES OF THIRD PARTY;
- (5) ANY CLAIM OR ACTION FOR DAMAGES, BROUGHT BY ANY PERSON OR ORGANIZATION BEING A PHOTOGENIC SUBJECT, DUE TO VIOLATION OF PRIVACY WITH THE RESULT OF THAT SURVEILLANCE-CAMERA'S PICTURE, INCLUDING SAVED DATA, FOR SOME REASON, BECOMES PUBLIC OR IS USED FOR THE PURPOSE OTHER THAN SURVEILLANCE.

Network Security

As you will use this product connected to a network, your attention is called to the following security risks.

1. Leakage or theft of information through this product
2. Use of this product for illegal operations by persons with malicious intent
3. Interference with or stoppage of this product by persons with malicious intent

It is your responsibility to take precautions such as those described below to protect yourself against the above network security risks.

- Use this product in a network secured by a firewall, etc.
- If this product is connected to a network that includes PCs, make sure that the system is not infected by computer viruses or other malicious entities (using a regularly updated anti-virus program, anti-spyware program, etc.).
- Protect your network against unauthorized access by restricting users to those who log in with an authorized user name and password.
- Apply measures such as user authentication for the servers and the connected devices to protect your network against leakage or theft of information, including image data, authentication information (user names and passwords), alarm mail information, FTP server information, etc.

Precaution

Distributing, copying, disassembling, reverse compiling, reverse engineering, and also exporting in violation of export laws of the software provided with this product, is expressly prohibited.

Preface

By using this software, the following settings of the digital disk recorder WJ-ND300 (A) can be configured on a PC via a network.

- Network settings
- Registration of cameras, and deletion/edit of the registered cameras

IP addresses of the cameras connected to the WJ-ND300 (A) can be automatically assigned with this software. When using multiple network disk recorders, it is necessary to configure the above settings independently.

This software works only when the software version of the WJ-ND300 (A) is 3.00 or later.

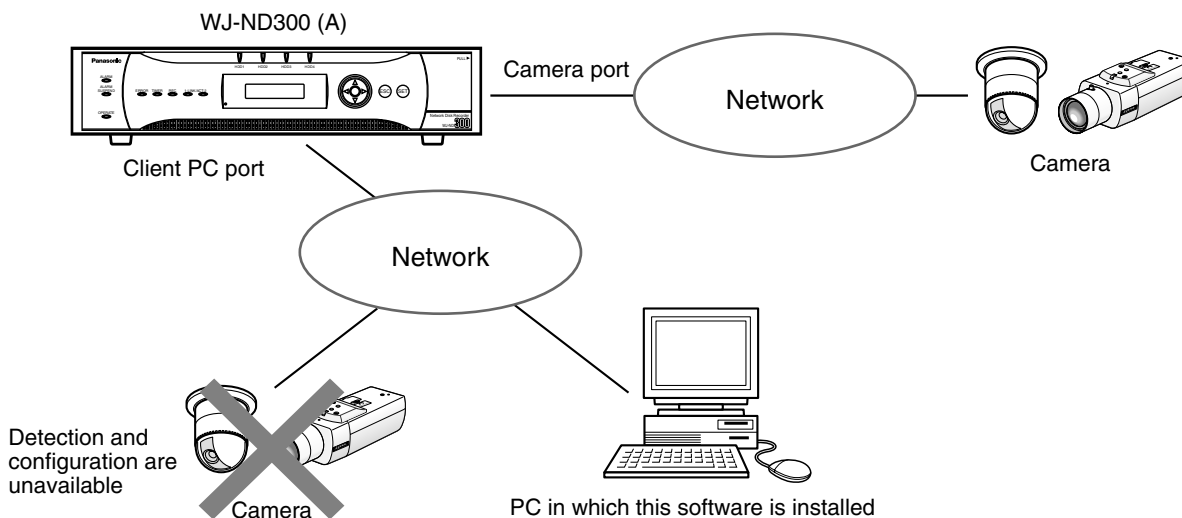
When failed to configure the above settings with this software, configure them using the setup menu of the WJ-ND300 (A). To configure the settings of the connected cameras, use the setup software of the cameras. Refer to the setup instructions (PDF) of the WJ-ND300 (A) or the operating instructions of the camera for further information.

When the recorder in use is the WJ-ND200, it is possible to configure the network settings of the WJ-ND200 via a network using this software.

System Configuration

When operating the WJ-ND300 (A)

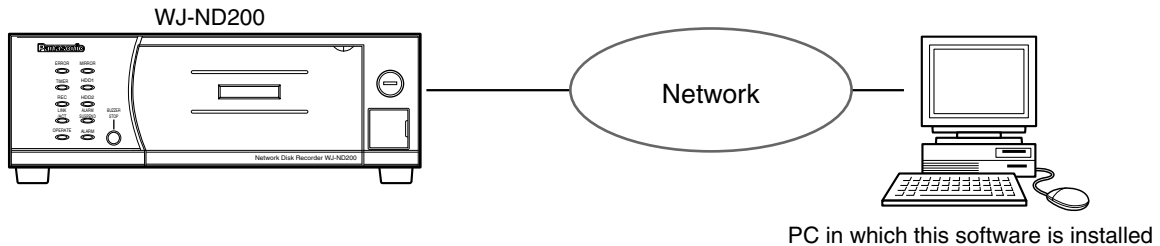
To configure the settings with this software, connect the PC in which this software is installed to the client PC port of the WJ-ND300 (A) and the camera to the camera port of the WJ-ND300 (A). When the camera is connected to the client PC port, it is impossible to detect and configure the camera.



When operating the WJ-ND200

This software can detect the WJ-ND200 on a network and display its network settings.

It is impossible to configure the displayed network settings of the WJ-ND200 nor to detect and configure the settings of the cameras connected to the detected WJ-ND200.



Important:

- This software is inoperable in a different subnet over a router.
 - The WJ-ND300 (A)/WJ-ND200 can be detected and configured using this software. However, for enhancing security, this software will not detect the WJ-ND300 (A) when 20 minutes have passed after the power is turned on once the default settings are changed.
To detect the WJ-ND300 (A) after the settings have been changed, click the [Available] button of "IP Setup Tool" on the "NW Camera Setup" page (under the "Camera" page of the WJ-ND300 (A) setup menu), or reboot the WJ-ND300 (A).
To detect the WJ-ND200, reboot the WJ-ND200.
This software can detect the WJ-ND300 (A)/WJ-ND200 until 20 minutes have passed after the [Available] button is clicked or after the reboot.
 - Depending on the model of camera, this software will not detect it when 20 minutes have passed after the power is turned on once the default settings are changed. Refer to the operating instructions of the camera in use for further information.
-

System Requirements for a PC

It is recommended to install this software on a PC that meets the following system requirements. If using a PC that does not meet the following system requirements, it may cause problems such as slow imaging on the browser or this software becomes inoperable.

OS:	Microsoft® Windows Vista® 32-bit Microsoft® Windows® XP Professional SP2 Microsoft® Windows® XP Home Edition SP2
OS Language	English, French, Spanish, German, Italian, Russian, Chinese
CPU:	Pentium® 4 3.0 GHz or faster
Memory:	1 GB or more (512 MB or more for Windows XP)
Monitor:	1 024 x 768 pixels or more
Network Interface:	10/100 Mbps Network interface card must be installed
Other	CD-ROM drive: It is necessary to read the operating instructions and use this software on the provided CD-ROM. Adobe® Reader®: It is necessary to read the operating instructions on the provided CD-ROM.

Trademarks and Registered Trademarks

- Adobe and Reader are either registered trademarks or trademarks of Adobe Systems Incorporated in the United States and/or other countries.
- Microsoft, Windows, Windows Vista are either registered trademarks or trademarks of Microsoft Corporation in the United States and/or other countries.
- Other names of companies and products contained in these operating instructions may be trademarks or registered trademarks of their respective owners.
- Intel and Pentium are trademarks or registered trademarks of Intel Corporation in the U.S. and other countries and are used under license.

Abbreviations

The following abbreviations are used in these operating instructions.

- Microsoft® Windows Vista® 32-bit is described as Windows Vista.
- Microsoft® Windows® XP Professional SP2 and Microsoft® Windows® XP Home Edition SP2 are described as Windows XP.

Start/Exit the Software

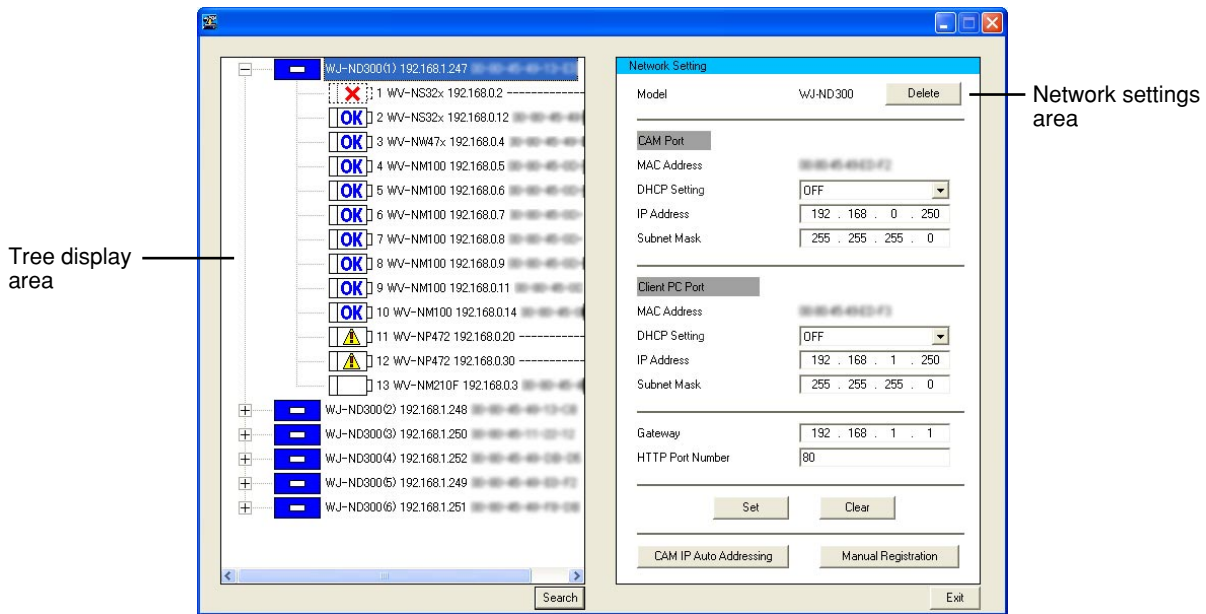
Start: Double-click the "IP Quick Setup Tool" icon (IPsetup.exe or ND300IPsetup.exe) to start this software. The software will start and the main window will be displayed.

Exit: Click the [Exit] button on the main window or the [x] button at the top right of the window to exit the software.

Notes:

- When using a PC on which Windows XP SP2 is installed, the security warning window may be displayed when the IP setup tool is started. When this occurred, click the [Unblock(U)] button.
 - When multiple network interface cards are installed on the PC, the network adapter selection window will be displayed when the software starts. Select a network adapter to be used.
 - Refer to "Notes on Vista" (PDF) for further information about system requirements for PC and precautions when using Microsoft® Windows Vista®.
-

Main Window



Tree display area

Icons of the detected WJ-ND300 (A)/WJ-ND200 and cameras will be displayed and their IP addresses and MAC addresses will be displayed. (When failed to detect the camera, its MAC address will not be displayed.) Refer to the next page for further information about the icons.

Network settings area

The network settings of the WJ-ND300 (A)/camera selected in the tree display area will be displayed. Only the network settings will be displayed when the recorder in use is the WJ-ND200. The connected cameras will not be displayed in the tree display area.

[Delete] button: Click this button to delete the icon of the selected WJ-ND300 (A)/camera.

[Set] button: Click this button to determine the edited settings.

[Clear] button: Click this button to cancel the edited settings and return to the previous settings. The settings will return to the previous settings only when the [Set] button is not clicked yet.

[CAM IP Auto Addressing] button*: Click this button to register the edited settings in the WJ-ND300 (A). IP addresses will automatically be assigned to the cameras connected to the WJ-ND300 (A).

[Manual Registration] button*: Click this button to register the edited settings to the WJ-ND300 (A)/camera.

* The [CAM IP Auto Addressing] button and the [Manual Registration] button will be displayed only when the WJ-ND300 (A) is selected in the tree display area.

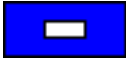









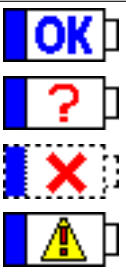
[Search] button: Click this button to search the connected WJ-ND300 (A)/WJ-ND200 and the cameras connected to the WJ-ND300 (A). The search result will be displayed in the tree area.

[Exit] button: Click this button to exit this software.

Notes:

- The above instruction is the example that all the connected recorders are WJ-ND300. When a WJ-ND300A is connected, "WJ-ND300A" ("WJ-ND200" when a WJ-ND200 is connected) will be displayed next to the recorder icon as the model number.
- When the detected recorder is the WJ-ND200, the connected cameras will not be displayed in the tree display area.
- When the detected recorder is the WJ-ND200, only displaying of the network settings is available. The buttons [Delete], [Set], [Clear], [CAM IP Auto Addressing] and [Manual Registration] will not be displayed.

Icons in the Tree Display Area

Type	Icon (Name)	Description
Recorder	 (WJ-ND300 (A)/ WJ-ND200)	Indicates the network disk recorder WJ-ND300(A)/WJ-ND200. (Normal display)
	 (WJ-ND300 (A))	This icon will be displayed when number of the detected cameras that are connected to WJ-ND300 (A) is 33 or more.
Camera	 (New)	Indicates a camera whose network information is not registered in the WJ-ND300 (A). It is necessary to configure the network settings and register them in the WJ-ND300 (A).
	 (Edited)	Indicates a camera whose network settings are edited with this software. To apply the edited settings to the WJ-ND300 (A)/camera, it is necessary to register this camera again.
	 (Camera in normal status)	Indicates that the network information of this camera is conformed to the information registered in the WJ-ND300 (A) and the camera. (Camera in normal status)
	 (Not applicable)	Indicates that this camera is not applicable with this software to configure the network settings even though the network information of this camera is registered in the WJ-ND300 (A). (Including cameras of other manufacturers) Network setting configuration is unavailable with this software.
	 (Host name)	Indicates the camera whose host name is registered in the WJ-ND300 (A), instead of IP address. Network setting configuration is unavailable with this software. Moving and copying the icon of this camera is also unavailable.
	 (Not detected)	Indicates a camera not detected even though its network information is registered in the WJ-ND300 (A). For enhancing security, some cameras may not respond (not be detected) even though whose status is normal.
	 (Incorrect settings)	Indicates that the network information of this camera is not conformed to the information registered in the WJ-ND300 (A) and the camera (IP address, etc.) even though the camera is normally detected. This icon will be displayed when there is no available IP address for this camera or when failed to automatically assign an IP address to this camera.
	 (33rd or later)	Indicates the 33rd detected camera or later. The settings for this camera will not be applied since the WJ-ND300 (A) can register up to 32 cameras.
	 (Settings changed)	Indicates that the camera number of this camera has been changed since this camera is deleted or moved. It is necessary to register this camera in the WJ-ND300 (A) again. When this camera is registered in the WJ-ND300 (A) again, it is necessary to configure the settings since the settings such as the recording rate will return to the default settings.

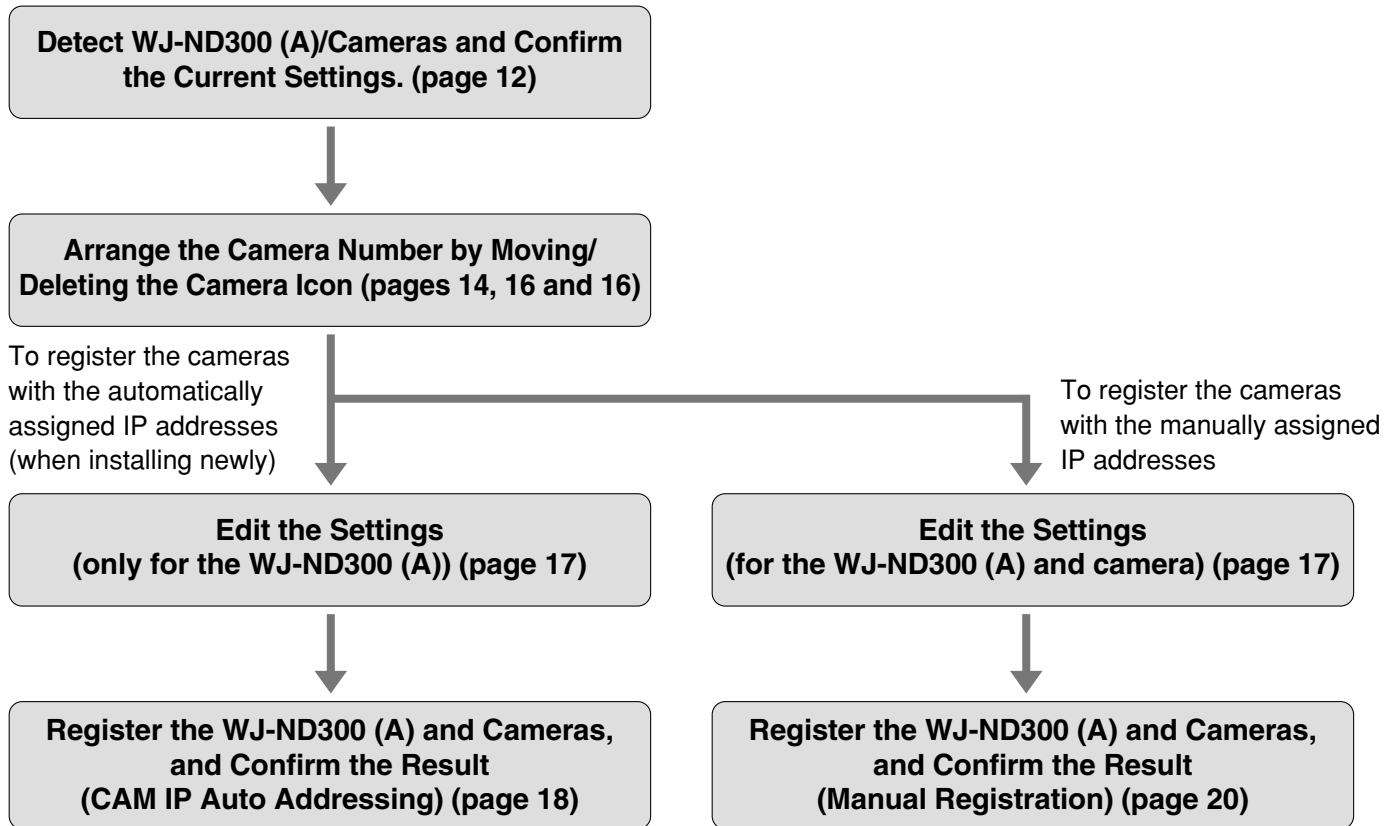
Operation Flow

When operating the WJ-ND300 (A)

The following settings can be configured with this software.

- Network settings of the WJ-ND300 (A) (Camera port, client PC port)
- Camera network settings of the WJ-ND300 (A) (Camera registration for each channel)
- Network settings of the cameras connected to the WJ-ND300 (A) (IP address, etc.)

Configure the network settings of the recorder/camera as follows.



Important:

- Any recording currently being performed on the WJ-ND300 (A) will stop in the processes of "CAM IP Auto Addressing" and "Manual Registration".
- Refer to "Readme.txt" on the provided CD-ROM about supported versions of dedicated software, etc.

Notes:

- When using multiple WJ-ND300 (A), repeat the above procedures for each of WJ-ND300 (A).
 - Do not change the network settings of the cameras and register the cameras with the automatically assigned IP addresses when automatically assigning IP addresses to the cameras. (page 18)
-

The settings for the recorder/camera will be different as follows according to how the registration is made ("CAM IP Auto Addressing" or "Manual Registration").

Setup item		Manual Registration	CAM IP Auto Addressing	
WJ-ND300 (A)	Camera port	DHCP setting	Edited value	"OFF" only *1
		IP address	Edited value	Edited value
		Subnet mask	Edited value	Edited value
	Client PC port	DHCP setting	Edited value	Edited value
		IP address	Edited value	Edited value
		Subnet mask	Edited value	Edited value
	Default gateway		Edited value	Edited value
	HTTP port number		Edited value	Edited value
	NW camera setup (Manufacturer, MODEL/COMPRESSION, ADDRESS, Port number)		Cameras will be registered for each channel with edited values.*2	Cameras will be registered for each channel with edited values.*2
	Live image transmission rate		Fixed at "1 ips"	Fixed at "1 ips"
Rate settings other than the live image transmission rate		Default setting	Default setting	
Camera	DHCP setting		Edited value	Fixed at "OFF"
	IP address		Edited value	Auto incremented value (+1) starting from the IP address of the camera port of the recorder *3
	Subnet mask		Edited value	Same value as for the camera port of the recorder
	Gateway		Edited value	Same value as for the default gateway of the recorder
	HTTP port number		Edited value	Fixed at "80"

*1 "CAM IP Auto Addressing" is available only when "OFF" is selected for the DHCP setting of the camera.

*2 The compression method will automatically be applied (JPEG/M-JPEG).

*3 Check if the same IP addresses are not in use already even vacant IP addresses are searched and assigned automatically. When the message saying that no IP address is available is displayed, check the settings and perform "Manual Registration".

When operating the WJ-ND200

It is possible to display the current network settings of the WJ-ND200 using this software.

Refer to the setup instructions (PDF) for how to configure the settings of the network cameras, how to register cameras and how to edit the settings of the registered cameras.

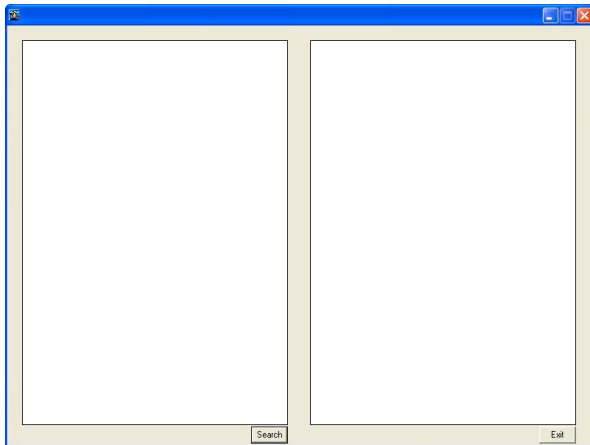
Detect WJ-ND300 (A)/Cameras and Confirm the Current Settings

The detected WJ-ND300 (A)/cameras will be displayed with icons.

The current network settings of the selected recorder/camera will be displayed in the network setting area.

Screenshot 1

Start operation when displaying the main window.

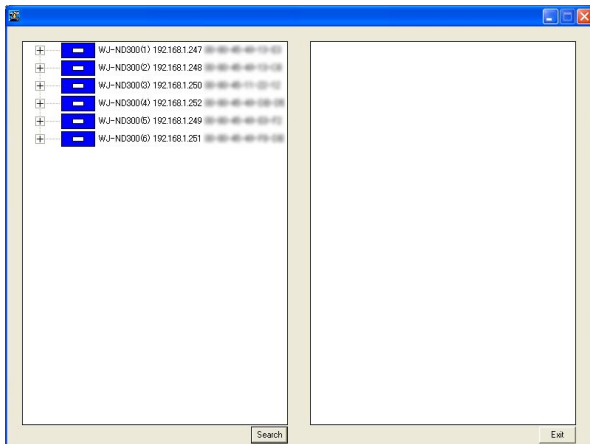


Step 1

Click the [Search] button.

Screenshot 2

The search processing window will be displayed, and then the search result will be displayed.



Step 2

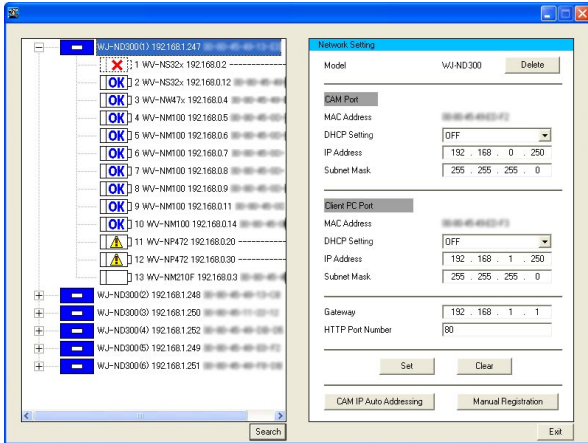
Click the icon of the WJ-ND300 (A)/camera whose settings are to be checked.

Notes:

- When "+" displayed on the left of the WJ-ND300 (A) icon is clicked, the icons of the camera registered already or detected newly will be displayed.
- When the PC and multiple WJ-ND300 (A)/WJ-ND200 are on the same network, multiple icons (up to 16) will be displayed.
- Order of the WJ-ND300 (A) icon displayed in the tree display area will change each time search is executed.

Screenshot 3

The network settings of the selected WJ-ND300 (A)/ camera will be displayed.



Notes:

- When "ON" is selected for the host authentication function on the WJ-ND300 (A), it is impossible to search recorders using a PC that is not allowed to edit the network settings of the WJ-ND300 (A).
- When search is executed by multiple PCs simultaneously, cameras may not be searched correctly.

Arrange the Camera Number by Moving/Deleting the Camera Icon

The camera numbers will be assigned to each camera channel of the WJ-ND300 (A) in order of the camera icons displayed in the tree display area.

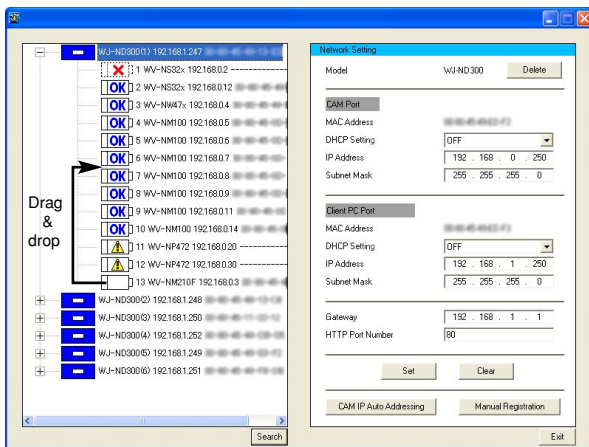
The camera numbers can be changed by changing the order of the icons in the tree display area.

By deleting the icons of the cameras from the tree display area, the deleted camera will not be registered. It will be useful to prevent registering unwanted cameras.

Move a camera icon

Screenshot 1

Start operation when the search result is displayed on the main window.



Step 1

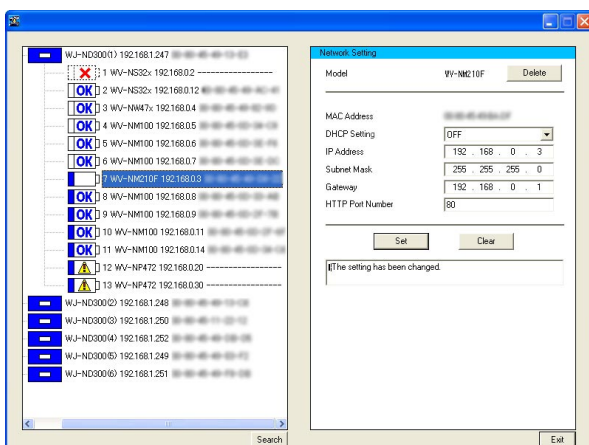
Drag the desired camera icon and drop to the desired point. (Dropped between 6 and 7 on screenshot 1.)

Note:

Moving and copying the icon is unavailable when the respective camera is registered with the host name.

Screenshot 2

The camera icon will be moved.



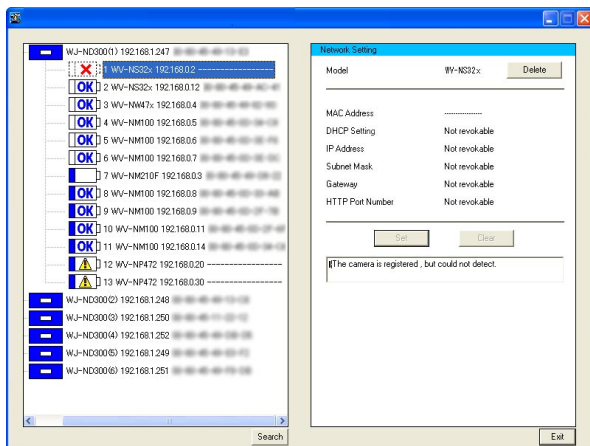
Note:

When multiple WJ-ND300 (A) icons are displayed, the camera icon can be copied onto the other WJ-ND300 (A) by drag and drop.

Delete a camera icon

Screenshot 1

Start operation when the search result is displayed on the main window.

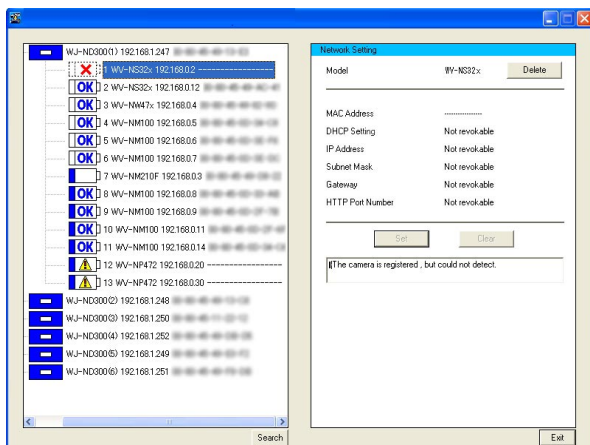


Step 1

Click to select the icon of the camera not to be used with the WJ-ND300 (A).

Screenshot 2

The settings of the selected camera will be displayed.



Step 2

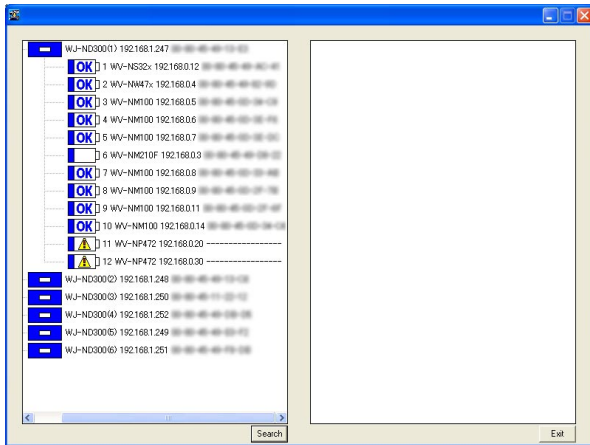
Click the [Delete] button.

Step 3

Click the [OK] button when the confirmation window is displayed.

Screenshot 3

The selected camera icon will be deleted.



Notes:

- When the selected icon is deleted, the camera icons below the deleted icon will move up. However, the camera number of the camera registered with the host name (displayed with "[URL]") will not be changed.
- When the [Delete] button is clicked after selecting the recorder icon with "[Delete]", the selected WJ-ND300 (A) icon will be deleted from the tree display area.

Important:

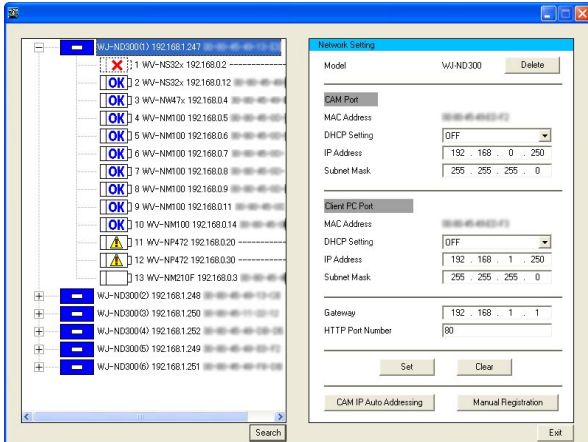
When the camera number is changed once, the settings such as the WJ-ND300 (A) rate will become "OFF" after registration. It is necessary to configure the settings again.

Edit the Settings

Edit the network settings of the WJ-ND300 (A)/camera such as IP address.

Screenshot 1

Start operation when the search result is displayed on the main window.



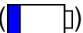
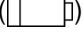

Step 1

Edit the network settings of the WJ-ND300 (A)/camera such as IP address.

Step 2

Click the [Set] button after editing the settings.

Notes:

- It is possible to cancel the settings edited in step 1 and return to the previous settings by clicking the [Clear] button when the [Set] button is not clicked yet.
- When the settings are changed once, the respective camera icon will turn to the edited icon ().
- To register the newly detected camera () without changing the network settings, click the [Set] button without changing the settings and display the edited icon ().
The camera respective to the edited icon will be registered in the WJ-ND300 (A).
- When IP addresses are to be automatically assigned, do not change the settings of the cameras. When the camera settings are changed, the [CAM IP Auto Addressing] button will become unavailable. In this case, click the [Search] button again.
- When the WJ-ND300 (A) settings are edited, registration will be unavailable until the [Set] button or the [Clear] button is clicked.

Register the WJ-ND300 (A) and Cameras, and Confirm the Result (CAM IP Auto Addressing)

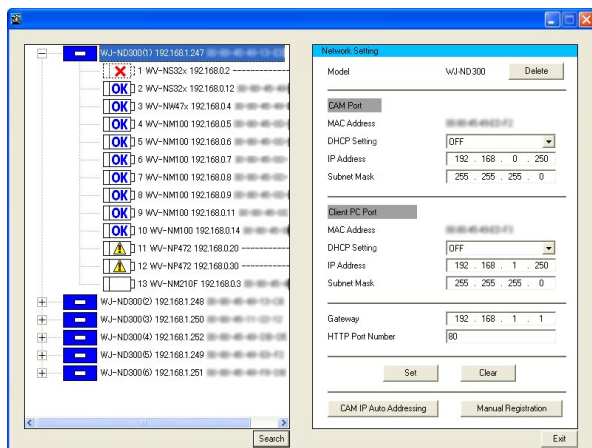
Register the edited settings in the WJ-ND300 (A) and the automatically assigned IP addresses in the cameras.

Note:

Some camera models may not support "CAM IP Auto Addressing".
Refer to "readme.txt" on the provided CD-ROM for further information about the compatible cameras.

Screenshot 1

Start operation when the search result is displayed on the main window.



Step 1

Select the icon of the WJ-ND300 (A) to be registered.

Step 2

Click the [CAM IP Auto Addressing] button.

Note:

Select "OFF" for the DHCP setting of "CAM Port" in advance since the [CAM IP Auto Addressing] button will become unavailable if "ON" is set.

Step 3

Click the [OK] button when the confirmation window is displayed.

Important:

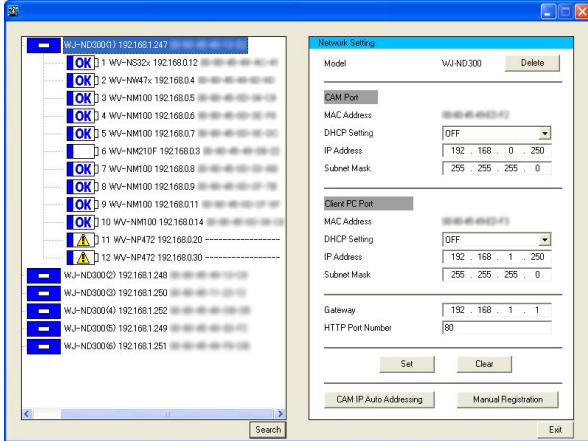
- Automatically incremented value (+1) starting from the IP address of the camera port of the WJ-ND300 (A) will be assigned to the cameras orderly. The subnet should be "255.255.255.0" since the value will be determined at the fourth octet of the IP address. When the subnet cannot be not "255.255.255.0", register WJ-ND300 (A)/cameras manually.
- The cameras displayed in the tree display area are subject to be registered in the WJ-ND300 (A) using "CAM IP Auto Addressing". Delete unwanted cameras in advance.
- Any recording currently being performed on the WJ-ND300 (A) will stop in the process of "CAM IP Auto Addressing".

Notes:

- IP addresses will not automatically be assigned to cameras that are not applicable with this software (⚠) and cameras registered with the host name (URL).
- IP addresses can automatically be assigned to up to 32 cameras.

Screenshot 2

The registration processing window will be displayed, and then the registration result will be displayed.



Step 4

Confirm the registration result. Display live images from the camera and confirm that they are normally displayed.

Notes:

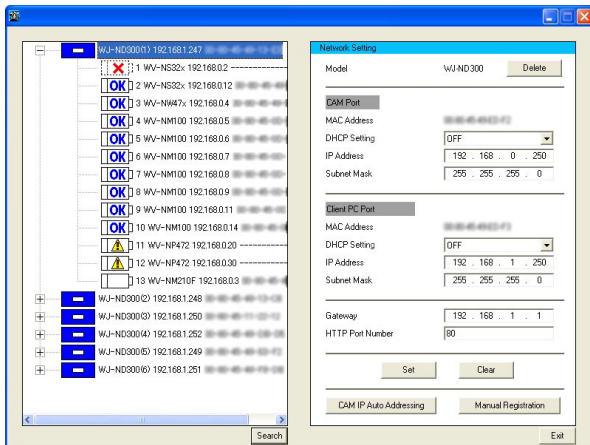
- Display live images from the camera and confirm that they are normally displayed. The live image transmission rate is set to "1 ips" on the WJ-ND300 (A). The image compression method of the camera is set to "JPEG" or "M-JPEG".
- The recording rate, camera title, and user name/password of the camera will return to the default when the already registered camera is registered again. It is necessary to configure them again.
- The deleted camera icon will be displayed as the newly detected icon (□) after registration. (Not registered in the WJ-ND300 (A).)

Register the WJ-ND300 (A) and Cameras, and Confirm the Result (Manual Registration)

Register the edited settings in the WJ-ND300 (A) and the camera. When not registered, the edited settings will not be applied to the recorder.

Screenshot 1

Start operation when the search result is displayed on the main window.



Step 1

Select the icon of the WJ-ND300 (A) to be registered.

Step 2

Click the [Manual Registration] button.

Step 3

Click the [OK] button when the confirmation window is displayed.

Important:

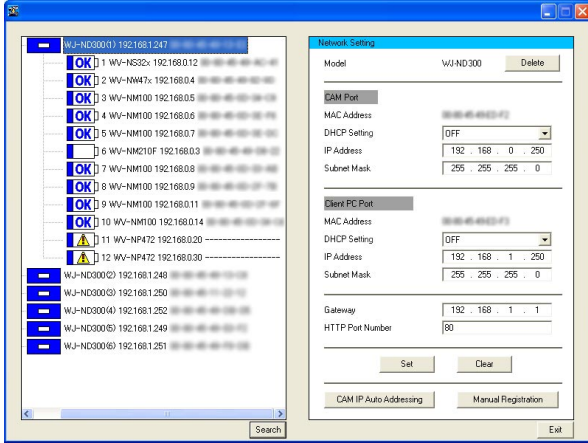
- To register the newly detected camera ([]) in the WJ-ND300 (A), the camera icon should be the edited icon ([]). (page 17)
- Any recording currently being performed on the WJ-ND300 (A) will stop in the process of "Manual Registration".

Notes:

- Edit of the settings of the cameras that are not applicable with this software ([]) and of the cameras registered with the host name ([URL]) is unavailable.
- IP addresses can automatically be assigned to up to 32 cameras.

Screenshot 2

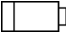
The registration processing window will be displayed, and then the registration result will be displayed.



Step 4

Confirm the registration result. Display live images from the camera and confirm that they are normally displayed.

Notes:

- Display live images from the camera and confirm that they are normally displayed. The live image transmission rate is set to "1 ips" on the WJ-ND300 (A). The image compression method of the camera is set to "JPEG" or "M-JPEG".
- The recording rate, camera title, and user name/password of the camera will return to the default when the already registered camera is registered again. It is necessary to configure them again.
- The deleted camera icon will be displayed as the newly detected icon () after registration. (Not registered in the WJ-ND300 (A))

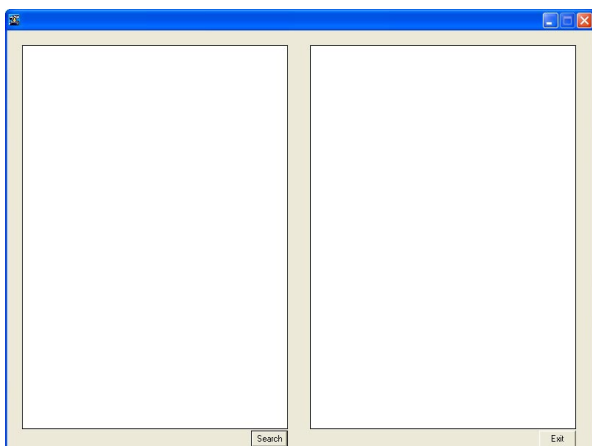
Detect WJ-ND200/Cameras and Confirm the Current Settings

The detected WJ-ND200/cameras will be displayed with icons.

The current network settings of the selected WJ-ND200/camera will be displayed in the network setting area.

Screenshot 1

Start operation when displaying the main window.

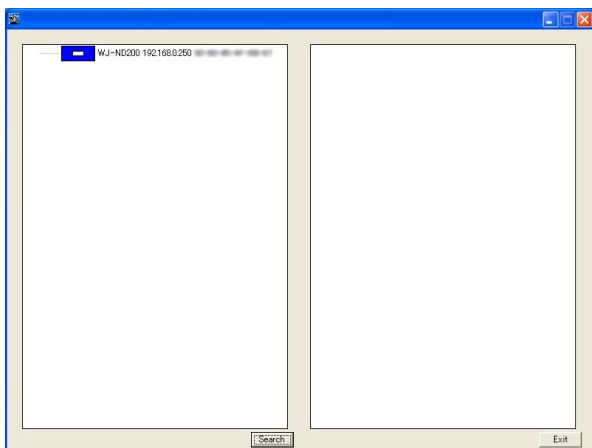


Step 1

Click the [Search] button.

Screenshot 2

The search processing window will be displayed, and then the search result will be displayed.



Step 2

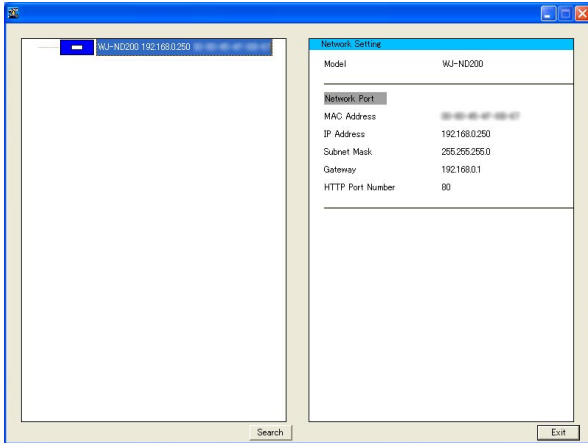
Click the icon of the WJ-ND200 whose settings are to be checked.

Notes:

- The cameras registered in the WJ-ND200 will not be displayed.
- When the PC and multiple WJ-ND200 are on the same network, multiple icons (up to 16) will be displayed.
- Order of the WJ-ND200 icon displayed in the tree display area will change each time search is executed.

Screenshot 3

The network settings of the selected WJ-ND200 will be displayed.



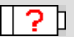

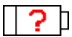
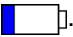



Note:

When "ON" is selected for the host authentication function on the WJ-ND200, it is impossible to search recorders using a PC that is not allowed to edit the network settings of the recorder.

Tips to Configure the Settings

When having a problem to configure the settings with this software, check and try the solution described below.

Problem	Tip
Need to register the network settings of the newly detected camera without changing.	<ul style="list-style-type: none">• Display the network settings of the camera and click the [Set] button without changing the settings. The newly detected icon will turn to the edited icon () and the settings will be registered in the WJ-ND300 (A).
The cameras with the same MAC address are displayed with the  and  icons.	<ul style="list-style-type: none">• The IP addresses of the camera registered in the WJ-ND300 (A) and in the camera are not the same. Configure as follows.<ol style="list-style-type: none">① Delete a camera icon .② Click the [Set] button after selecting the camera icon  to turn the icon to the edited icon .③ Select the WJ-ND300 (A) icon and click the [Manual Registration] button.
IP address is not displayed when registered after selecting "ON" for the DHCP function of the camera.	<ul style="list-style-type: none">• It may take time for the camera to obtain the IP address. Wait for a while and display IP address by executing search. Registration of the camera (registration of IP address, etc.) in the WJ-ND300 (A) is necessary after displaying the IP address.
No live image is displayed even though the camera icon  is displayed.	<ul style="list-style-type: none">• When the camera is already registered, the model number of the camera or the HTTP port number may be incorrect. When the user authentication of the camera is "ON", it is necessary to register the user name/password on the "Camera" page of the WJ-ND300 (A). Check and edit the settings.

Troubleshooting

Contact your dealer if a problem cannot be solved even after checking and trying the solution or a problem is not described below.

Symptom	Cause/solution	Reference pages
<p>The WJ-ND300 (A)/WJ-ND200 is not detected using this software.</p>	<p>▶ Is the Ethernet cable firmly connected to the 100BASE-Tx port? Confirm the cable is firmly connected.</p>	<p>—</p>
	<p>▶ Is the connection indicator of the 100BASE-Tx port lit? When it is not lit, connection to a LAN is not established or a network is not working correctly. Confirm that the connection indicator of the 100BASE-Tx port is lit. Refer to a system administrator if it is not lit.</p>	<p>—</p>
	<p>▶ Is the hub installed between the WJ-ND300 (A)/WJ-ND200 and a network applicable for 100 Mbps? When the hub is not applicable for 100 Mbps, the recorder may not be detected correctly.</p>	<p>—</p>
	<p>▶ Has 20 minutes passed after the default settings of the WJ-ND300 (A)/WJ-ND200 such as IP address had been changed? The recorder can be detected only 20 minutes after changing the default settings. To detect the WJ-ND300 (A) after the settings have been changed, click the [Available] button of "IP Setup Tool" on the "NW Camera Setup" page (under the "Camera" page of the WJ-ND300 (A) setup menu), or reboot the WJ-ND300 (A). To detect the WJ-ND200, reboot the WJ-ND200. This software can detect the WJ-ND300 (A)/WJ-ND200 until 20 minutes have passed after the [Available] button is clicked or after the reboot.</p>	<p>Setup Instructions (PDF)</p>
	<p>▶ Isn't the host authentication function set to "ON"? Is the PC (host) in use to search allowed to edit the network settings of the WJ-ND300 (A)/WJ-ND200? When the host authentication is "ON", use a PC (host) that is allowed to edit the network settings of the WJ-ND300 (A)/WJ-ND200.</p>	<p>Setup Instructions (PDF)</p>

Symptom	Cause/solution	Reference pages
<p>The WJ-ND300 (A)/WJ-ND200 is not detected using this software.</p>	<ul style="list-style-type: none"> Is the DISK CONFIG MENU of the WJ-ND300 (A)/WJ-ND200 being operated, or is the WJ-ND300 (A)/WJ-ND200 in the process of the measurement operation? When the DISK CONFIG MENU of the WJ-ND300 (A)/WJ-ND200 is being operated or when the measurement operation is being executed, the settings cannot be configured. Try to search the recorder after the DISK CONFIG MENU operation or the measurement operation is finished. 	<p>Setup Instructions (PDF)</p>
<p>Cameras cannot be detected from the WJ-ND300 (A).</p>	<ul style="list-style-type: none"> Has 20 minutes passed after the default settings of the camera such as IP address had been changed? Some models can be detected only 20 minutes after changing the default settings. To apply the settings, reboot the camera. 	<p>Operating instructions of the camera</p>
	<ul style="list-style-type: none"> When multiple WJ-ND300 (A) are used, some models cannot be detected correctly. (Some recorders may detect them and some may not.) In this case, register the camera using the WJ-ND300 setup menu. 	<p>—</p>

For U.S. and Canadian fields:

**Panasonic System Networks Company of America,
Division of Panasonic Corporation of North America**

www.panasonic.com/business/

For customer support, call 1.800.528.6747

Three Panasonic Way, Secaucus, New Jersey 07094 U.S.A.

Panasonic Canada Inc.

5770 Ambler Drive, Mississauga, Ontario, L4W 2T3 Canada
(905)624-5010

www.panasonic.ca

For European and other fields:

Panasonic Corporation

<http://panasonic.net>

Importer's name and address to follow EU rules:

Panasonic Testing Centre
Panasonic Marketing Europe GmbH
Winsbergring 15, 22525 Hamburg F.R.Germany