

Panasonic

Administrator Console

Operating Instructions

Model No. **WJ-ND300 Series**



Before attempting to connect or operate this product,
please read these instructions carefully and save this manual for future use.

The model number is abbreviated in some descriptions in this manual.

Contents

| | |
|--|----|
| Limitation of Liability | 3 |
| Disclaimer of Warranty | 3 |
| Network Security | 3 |
| Features | 4 |
| About Copyright and License | 4 |
| Trademarks and Registered Trademarks | 4 |
| System Requirement | 4 |
| Preparations | 5 |
| Connections | 5 |
| Performing the network settings of the network disk recorder | 5 |
| Performing the network settings of a PC | 5 |
| Installing This Software | 6 |
| Uninstalling This Software | 7 |
| Start the Software | 8 |
| About the Operation Window | 10 |
| Setting Items | 11 |
| Download the Setting Values | 14 |
| Upload the Setup File | 16 |
| Open the Setup File | 19 |
| Save the Setup File | 20 |
| Create a Setup File Newly | 21 |
| Convert the Version of the Setup File Format | 22 |
| Change the Password | 23 |
| Error Messages | 24 |
| Troubleshooting | 25 |

Limitation of Liability

THIS PUBLICATION IS PROVIDED "AS IS" WITHOUT WARRANTY OF ANY KIND, EITHER EXPRESS OR IMPLIED, INCLUDING BUT NOT LIMITED TO, THE IMPLIED WARRANTIES OF MERCHANTABILITY, FITNESS FOR ANY PARTICULAR PURPOSE, OR NON-INFRINGEMENT OF THE THIRD PARTY'S RIGHT. THIS PUBLICATION COULD INCLUDE TECHNICAL INACCURACIES OR TYPOGRAPHICAL ERRORS. CHANGES ARE ADDED TO THE INFORMATION HEREIN, AT ANY TIME, FOR THE IMPROVEMENTS OF THIS PUBLICATION AND/OR THE CORRESPONDING PRODUCT (S).

Disclaimer of Warranty

IN NO EVENT SHALL Panasonic System Networks Co., Ltd. BE LIABLE TO ANY PARTY OR ANY PERSON, EXCEPT FOR REPLACEMENT OR REASONABLE MAINTENANCE OF THE PRODUCT, FOR THE CASES, INCLUDING BUT NOT LIMITED TO BELOW:

- (1) ANY DAMAGE AND LOSS, INCLUDING WITHOUT LIMITATION, DIRECT OR INDIRECT, SPECIAL, CONSEQUENTIAL OR EXEMPLARY, ARISING OUT OF OR RELATING TO THE PRODUCT;
- (2) PERSONAL INJURY OR ANY DAMAGE CAUSED BY INAPPROPRIATE USE OR NEGLIGENT OPERATION OF THE USER;
- (3) UNAUTHORIZED DISASSEMBLE, REPAIR OR MODIFICATION OF THE PRODUCT BY THE USER;
- (4) ANY PROBLEM, CONSEQUENTIAL INCONVENIENCE, OR LOSS OR DAMAGE, ARISING OUT OF THE SYSTEM COMBINED BY THE DEVICES OF THIRD PARTY.
- (5) ANY CLAIM OR ACTION FOR DAMAGES, BROUGHT BY ANY PERSON OR ORGANIZATION BEING A PHOTOGENIC SUBJECT, DUE TO VIOLATION OF PRIVACY WITH THE RESULT OF THAT SURVEILLANCE-CAMERA'S PICTURE, INCLUDING SAVED DATA, FOR SOME REASON, BECOMES PUBLIC OR IS USED FOR THE PURPOSE OTHER THAN SURVEILLANCE

Network Security

As you will use this product connected to a network, your attention is called to the following security risks.

1. Leakage or theft of information through this product
2. Use of this product for illegal operations by persons with malicious intent
3. Interference with or stoppage of this product by persons with malicious intent

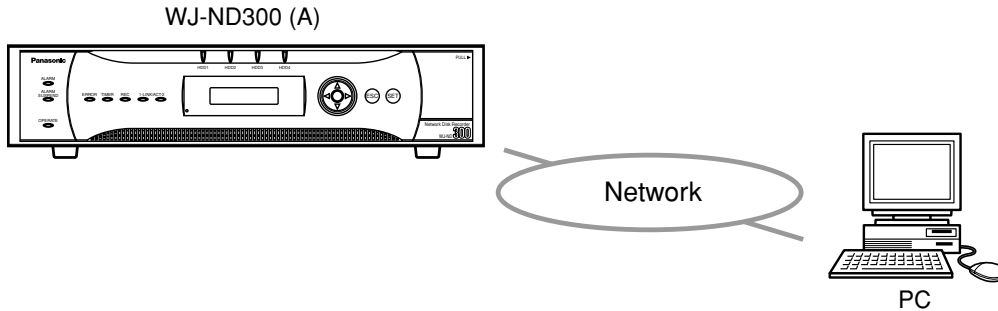
It is your responsibility to take precautions such as those described below to protect yourself against the above network security risks.

- Use this product in a network secured by a firewall, etc.
- If this product is connected to a network that includes PCs, make sure that the system is not infected by computer viruses or other malicious entities (using a regularly updated anti-virus program, anti-spyware program, etc.).
- Protect your network against unauthorized access by restricting users to those who log in with an authorized user name and password.
- Apply measures such as user authentication for the servers and the connected devices to protect your network against leakage or theft of information, including image data, authentication information (user names and passwords), alarm mail information, FTP server information, etc.

Features

The WJ-ND300 (A) Administrator Console is the exclusive setup tool for the Network Disk Recorder WJ-ND300 (A). By using this software, it is possible to perform the settings of the network disk recorder using a PC via a network. It is also possible to download the setting values and save it as a setup file, and upload the edited setup file to the network disk recorder.

This software is applicable for version 2.0 or later of the WJ-ND300 (A).



About Copyright and License

This software can be distributed and used only if you agree to the copyright and license agreement of this software. Distributing, copying, disassembling, reverse compiling, reverse engineering, and also exporting in violation of export laws of the software provided with this product are expressly prohibited.

Trademarks and Registered Trademarks

- Microsoft, Windows, Windows Vista, Internet Explorer, ActiveX and DirectX are either registered trademarks or trademarks of Microsoft Corporation in the United States and other countries.
- Intel and Pentium are trademarks or registered trademarks of Intel Corporation or its subsidiaries in the United States and other countries.
- Adobe and Reader are either registered trademarks or trademarks of Adobe Systems Incorporated in the United States and/or other countries.
- Other names of companies and products contained in these operating instructions may be trademarks or registered trademarks of their respective owners.

System Requirement

It is recommended to install this software on a PC that meets the following system requirements.

| | |
|--------------------|--|
| OS: | Microsoft® Windows Vista® 32-bit Microsoft® Windows® XP Home Edition SP2* Microsoft® Windows® XP Professional SP2* |
| OS Language | English, French, Spanish, German, Italian, Russian, Chinese |
| CPU: | Pentium® 4 3.0 GHz or faster |
| Memory: | 512 MB or more (A minimum of 1 GB memory is required when using Microsoft® Windows Vista®.) |
| CD-ROM drive: | Required for the installation of this software |
| Hard disk drive: | Approx. 160 MB of available disk space for installation |
| Monitor: | 1 024 x 768 pixels or more, 24-bit True color or better |
| Network Interface: | 10/100 Mbps Network interface card must be installed |

Adobe® Reader: Adobe® Reader should be installed on a PC to read these operating instructions. When the Adobe® Reader is not installed on the PC, download the latest Adobe® Reader from the Adobe web site and install it.

Notes:

- This software must be installed or started by the administrator. Otherwise, any problems will not be covered by the warranty.
 - Refer to "Notes on Vista®" (PDF) for further information about system requirements for a PC and precautions when using Microsoft® Windows Vista®.
-

Preparations

It is necessary to complete the connections between a PC and the network disk recorder and perform the network settings of the PC and the network disk recorder respectively.

Connections

There are 2 methods to connect a PC and the network disk recorder:

- Connecting a PC and the network disk recorder directly
- Connecting a PC to the network disk recorder via a hub or a router

When connecting a PC to the network disk recorder, the required hardware and cables are different depending on the system configuration. Prepare before starting connection.

Refer to the Setup Instructions (PDF) of the network disk recorder for descriptions of how to perform the network settings.

Performing the network settings of the network disk recorder

Use the buttons on the front panel of the network disk recorder or a web browser on the connected PC to conform to the network settings to the network environment of the PC.

Refer to the Setup Instructions (PDF) of the network disk recorder for further information about the network settings.

Performing the network settings of a PC

Change the TCP/IP setting of the PC on which this software is to be installed to conform to the network settings of the network disk recorder.

It is required to set the IP address of the PC to "192.168.1.XX (a number from 2 to 254)" to access the network disk recorder.

Refer to the Installation Guide (book) and the Setup Instructions (PDF) of the network disk recorder for descriptions of how to perform the network settings of a PC.

Installing This Software

Install this software as follows after completing the network settings of the network disk recorder and PC.

Step 1

Insert the provided CD-ROM into the PC disk drive.

Step 2

Double click "setup.exe" in the "Admin" folder.
The confirmation window will be displayed.

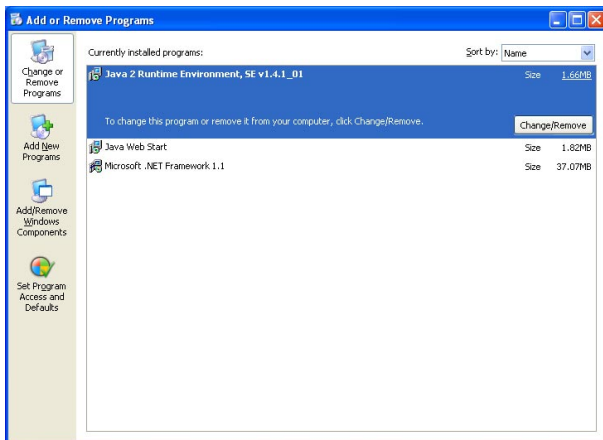
Step 3

Click the "OK" button and follow the installation wizard to install this software.
The "ND300 Administrator Console" folder will be created (C:\Program Files\Panasonic\ND300 Administrator Console) and the necessary files will be copied in it.

When installation is complete, the application will be added to "Programs" in "Start" and the shortcut will be created on the desktop.

Important:

Do not edit, remove, or move the directory path of the files above. Otherwise, this software may not function properly.



Notes:

- If Microsoft .NET Framework 1.1 or higher is not installed on a PC, it will be installed automatically when installing this software.
It is possible to check with "Control Panel" whether Microsoft .NET Framework 1.1 or higher is installed on a PC or not.
Open the "Change or Remove Programs" window by selecting "Add or Remove Programs" in "Control Panel".
The installed applications will be displayed in list form.
Check if "Microsoft .NET Framework 1.1 or higher" is on the list or not.
 - When re-installing this software is needed, the existing software must be uninstalled first.
-

Uninstalling This Software

If required, uninstall this software as follows.

Step 1

Open "Add or Remove Programs" in "Control Panel".
The "Add or Remove Programs" window will be displayed.

Step 2

Select "ND300 Administrator Console" and click the "Remove" button.

Step 3

Follow the uninstall wizard.

Start the Software

Start the software as follows.

Screenshot 1

Start just after the PC is started up.



Step 1

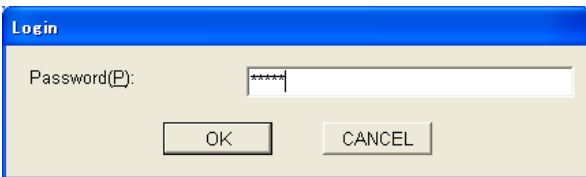
Select "ND300 Administrator Console" from the "Start" menu ("Start" - "All Programs" - "Panasonic" - "ND300 Administrator Console") or double click the shortcut icon of "ND300 Administrator Console" on the desktop. The software will start up.

Important:

Log in to the PC as an administrator before starting the software.

Screenshot 2

The login window will be displayed.



Step 2

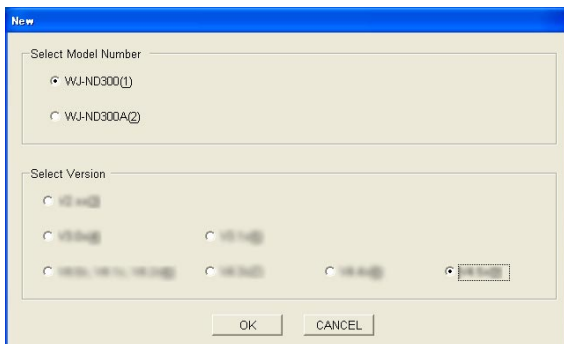
Enter the password.
The default password is "12345".
Refer to page 22 for how to change the password.

Step 3

Click the [OK] button.

Screenshot 3

The version selection window will be displayed.



Step 4

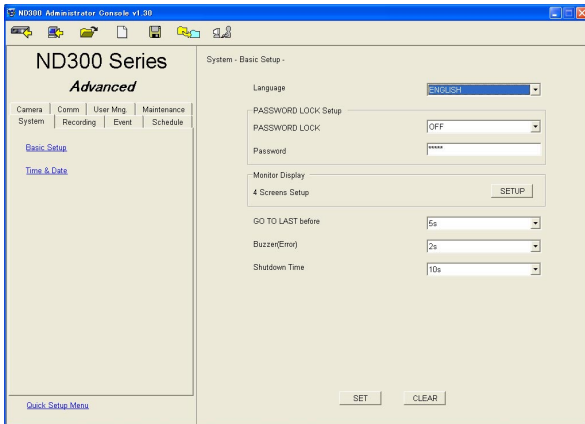
Select the version of the setup file to be created.
The window to be displayed differs depending on version of this software.

Step 5

Click the [OK] button.

Screenshot 4

The top page of the operation window will be displayed.




Step 6

Perform the settings for each item.

Step 7

Click the [SET] button after completing the settings.

Step 8

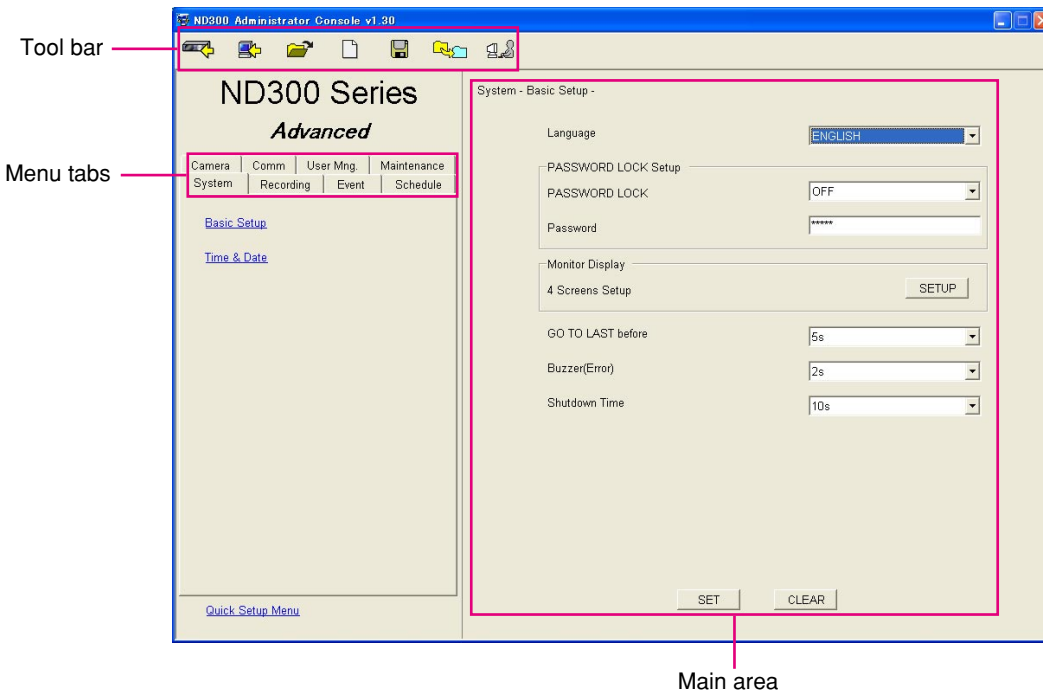
Close the window by clicking the  button at the top right of the window to exit the software.

Note:

It is possible to check version of the setup menu by displaying the "Product Information" page of "Maintenance" on the setup menu (Advanced) using a web browser.

Refer to the Setup Instructions (PDF) of the network disk recorder.

About the Operation Window



Tool bar



[Upload]: The setup file created/edited using this software will be uploaded to the network disk recorder by clicking this button. (page 16)



[Download]: The setting values will be downloaded from the network disk recorder by clicking this button. (page 14)



[Open]: Click this button to open the saved setup file. (page 19)



[New]: Click this button to create a new setup file. (page 21)



[Save As]: Click this button to save the created/edited setup file. (page 20)



[Version conversion]: Click this button to convert the version of the setup file format. The version of the setup file format can be upgraded when the version of the setup file format is 2.xx.



[Password]: Click this button to change the login password. (page 23)

Menu tabs: It is possible to display the respective settings page of the clicked menu tab.

Refer to page 11 for further information about each menu.

It is possible to display the top page of "Quick Setup Menu" by clicking the "Quick Setup Menu" link text at the bottom left of the window.

(When "Quick Setup Menu" is displayed, the "Advanced Setup Menu" link text will be displayed at the bottom left of the window. It is possible to display the top page of "Advanced Setup Menu" by clicking it.

Main area: The setting items of the selected menu will be displayed in this area.

SET : Click this button to apply the edited settings.

CLEAR : Click this button to cancel to apply the edited settings.

Note:

When the version of the WJ-ND300 (A) in use is 4.xx or later, this icon will not be displayed.

Setting Items

The following setting items can be operated using this software.

The tables below show the available setting items when using this software and when using a web browser respectively.

Refer to the Setup Instructions (PDF) of the network disk recorder.

Quick Setup Menu

| Settings menu | This software | Web browser |
|-------------------|--|-------------|
| Display Setup | Only the settings relating to time & date is operable. It is impossible to set the clock. | Operable |
| Camera Setup | Operable It is impossible to perform the settings of the connected cameras. | Operable |
| Rec & Event Setup | Operable | Operable |
| Network Setup | Operable | Operable |

Advanced Setup Menu

| Settings menu | This software | Web browser |
|---------------------|--|-------------|
| System | | |
| Basic Setup | Operable | Operable |
| Time & Date | Only the settings relating to time & date is operable. It is impossible to set the clock. | Operable |
| Recording | | |
| REC Setup | Operable | Operable |
| Emergency REC | Operable | Operable |
| Event | | |
| Basic Setup | Operable | Operable |
| Terminal Setup | Operable | Operable |
| Site Alarm Setup | Operable | Operable |
| Command Alarm Setup | Operable | Operable |
| Schedule | | |
| Time Table | Operable | Operable |
| Program | Operable | Operable |
| Special Days | Operable | Operable |

| Settings menu | This software | Web browser |
|--------------------------|--|-------------|
| Camera | | |
| NW Camera Setup | Operable It is impossible to perform the settings of the connected cameras. | Operable |
| Group Setup | Operable | Operable |
| Sequence Setup | Operable | Operable |
| Comm | | |
| Basic Setup | Operable | Operable |
| DNS Setup | Operable | Operable |
| DDNS Setup | Operable | Operable |
| Proxy Setup | Operable | Operable |
| SNMP Setup | Operable | Operable |
| NTP Setup | Operable | Operable |
| FTP Setup | Operable | Operable |
| Mail Setup | Operable | Operable |
| Panasonic Alarm Protocol | Operable | Operable |
| User Mng. | | |
| Basic Setup | Operable | Operable |
| User Regist. | Operable | Operable |
| | "Administrator Edit" and "User Edit/Delete" are operable on the "User Regist." window. | |
| Host Regist. | Operable "Host Edit/Delete" is operable on the "Host Regist." window. | Operable |
| User Level | Operable | Operable |

| Settings menu | This software | Web browser |
|-----------------------|---|--------------|
| Maintenance | | |
| Product Information | Operable Temperature inside the unit will not be displayed. | Operable |
| Disk Information | Only "Warning for Disk Life Time" is operable. It is impossible to display information of HDD such as available disk space of the built-in HDD or HDD of the extension unit. | Operable |
| Partition Information | Not operable | Not operable |
| Network Information | Not operable | Not operable |
| Disk End Mode | Operable | Operable |
| HDD Capacity Warning | Operable | Operable |
| Data Delete | Only "HDD Auto Delete" is operable. It is impossible to delete data in the recording area manually. | Operable |
| Save/Load | Not operable | Operable |
| Config | Not operable | Operable |

Download the Setting Values

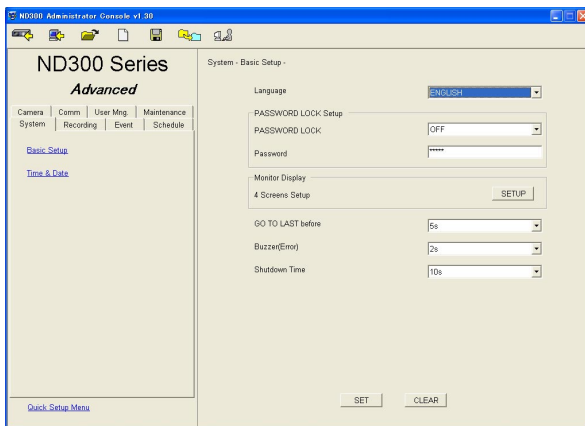
It is also possible to download the setting values and save it as a setup file.

Important:

- It is impossible to download the setting values while starting up the network disk recorder or during performing the system check of the network disk recorder.
- When trying to download the setting values, entering the Administrator password of the administrator of the network disk recorder will be required. Refer to the Setup Instructions (PDF) for further information.

Screenshot 1

Operate using the buttons on the tool bar on the operation window.

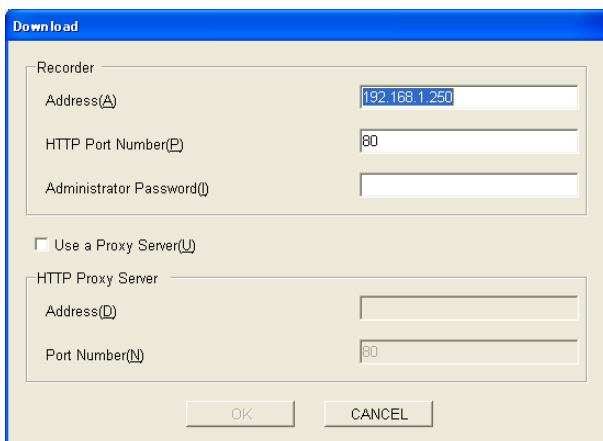


Step 1

Click the [Download] button on the tool bar.

Screenshot 2

The "Download" window will be displayed.



Step 2

Enter the address of the network disk recorder from which the setting values are to be downloaded.

Step 3

Enter the HTTP port number of the network disk recorder.

Step 4

Enter the Administrator password of the network disk recorder.

Step 5

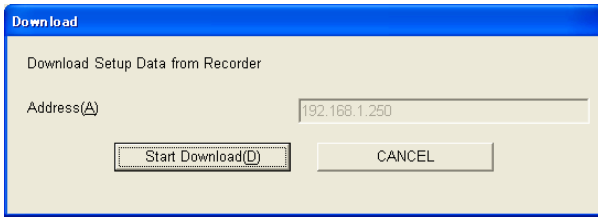
When using a proxy server, check the "Use a Proxy Server" checkbox and enter the address and the port number.

Step 6

Click the [OK] button after completing the settings.

Screenshot 3

The "Download" window will be displayed.

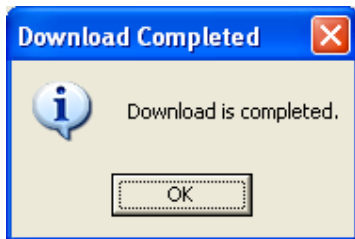


Step 7

After confirming that the displayed address is correct, click the [Start Download (D)] button. Downloading of the setting values will start.

Screenshot 4

The "Download Completed" window will be displayed when download is completed.

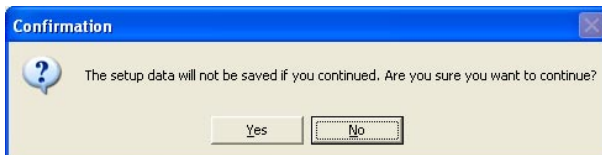


Step 8

Click the [OK] button.

Important:

When download is started while the setup file is being edited, the following window will be displayed.



When the [Yes] button is clicked, the setup file currently being edited will be overwritten by the setting values to be downloaded.

When the setup file currently being edited is to be saved, click the [No] button to cancel downloading of the setting values. Save the edited setup file first and then start the download.

Upload the Setup File

It is also possible to upload the created/edited setup file to the network disk recorder.

Important:

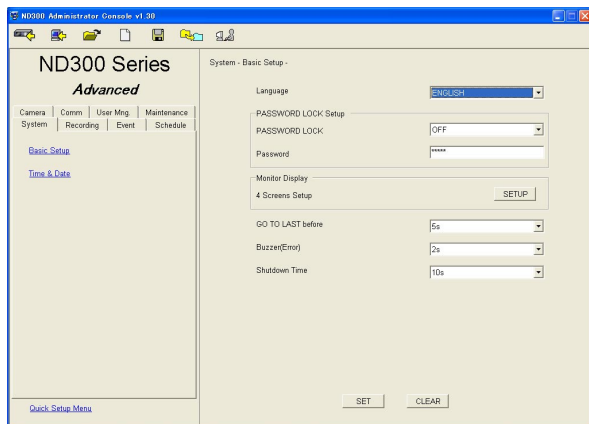
- When trying to upload the setup file, entering the Administrator password of the network disk recorder will be required. Refer to the Setup Instructions (PDF) for further information.
 - When the camera settings ("Camera" - "NW Camera Setup") are changed, there may be possibilities that images from the camera cannot be displayed. At the default setting, the setting values of "NW Camera Setup" are set as a masked item. (The setting values will not be uploaded.)
 - When the network settings ("Comm" - "Basic setup") are changed, connection error may occur on the network disk recorder.
At the default setting, the setting values of "Basic setup" are set as a masked item. (The setting values will not be uploaded. Refer to the next page for further information.)
 - Do not upload the setup file to the same network disk recorder from two or more PCs simultaneously using this software. Otherwise, an error may occur on the network disk recorder.
 - When the setting for "Line Speed" ("Comm" - "Basic setup" - "Line Speed") is changed, the network disk recorder will restart.
 - It is impossible to upload the setup file during starting up the network disk recorder or while performing the system check of the network disk recorder.
-

Screenshot 1

Operate using the buttons on the tool bar on the operation window.

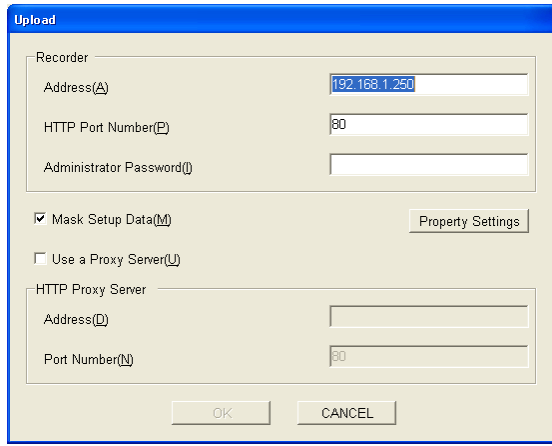
Step 1

Click the [Upload] button on the tool bar.



Screenshot 2

The "Upload" window will be displayed.



Step 2

Enter the address of the network disk recorder to which the setup file is to be uploaded.

Step 3

Enter the HTTP port number of the network disk recorder.

Step 4

Enter the Administrator password of the network disk recorder.

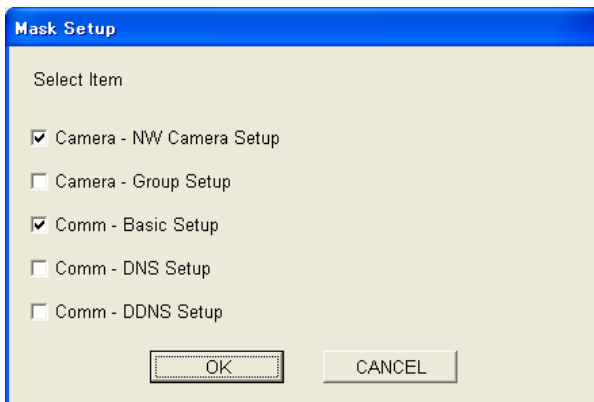
Step 5

When any settings of the following items are not to be uploaded, check the "Mask Setup Data" checkbox and click the [Property Settings] button.

When all of the settings are to be uploaded, go to step 8 after confirming that the "Mask Setup Data" check box is not checked.

Screenshot 3

The "Mask Setup" window will be displayed.



Step 6

Check the checkbox next to the setup item not to be uploaded.

Note:

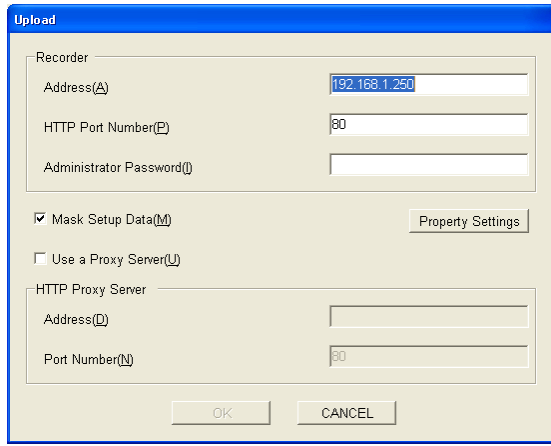
At the default setting, the setting values of the "Camera" – "NW Camera Setup" and "Comm" – "Basic Setup" are set as a masked item.

Step 7

Click the [OK] button.

Screenshot 4

The "Mask Setup" window will be closed.



Step 8

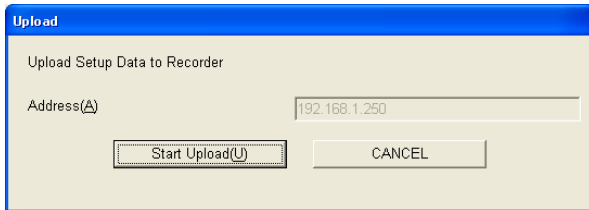
When using a proxy server, check the "Use a Proxy Server" checkbox and enter the address and the port number.

Step 9

Click the [OK] button after completing the settings.

Screenshot 5

The "Upload" window will be displayed.



Step 10

After confirming that the displayed address is correct, click the [Start Upload (U)] button. Uploading of the setup file will start.

Screenshot 6

The "Upload Completed" window will be displayed when upload is completed.



Step 11

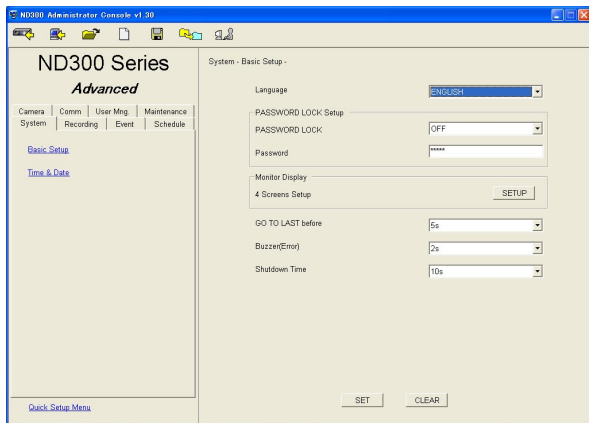
Click the [OK] button.

Open the Setup File

Open the saved setup file as follows.

Screenshot 1

Operate using the buttons on the tool bar on the operation window.

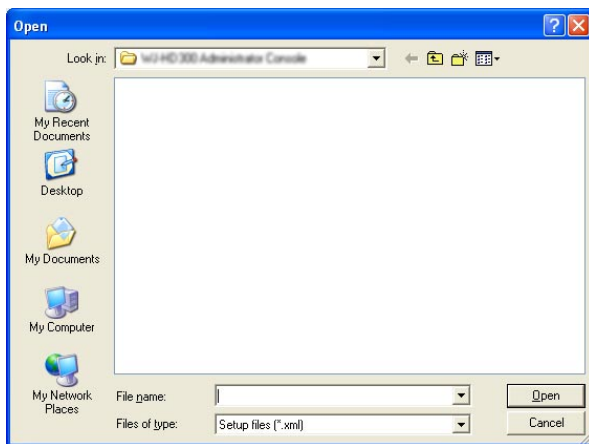


Step 1

Click the [Open] button on the tool bar.

Screenshot 2

The "Open" window will be displayed.

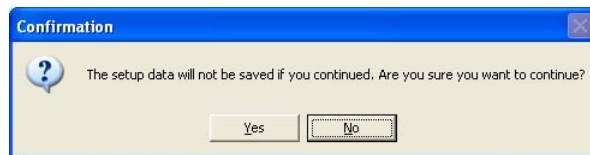


Step 2

Select the desired setup file and click the [Open] button. The setup file will open and the operation window will be displayed.

Important:

When opening a setup file while other setup file is being edited, the following window will be displayed.



When the [Yes] button is clicked, the newly opened setup file will overwrite the setup file currently being edited.

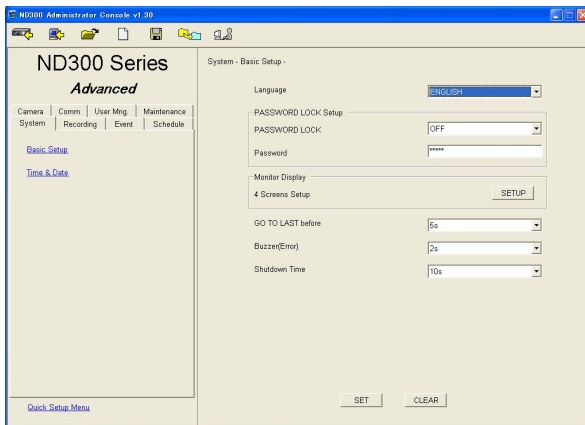
When the setup file currently being edited is to be saved, click the [No] button to cancel to open the setup file. Save the edited setup file first and then open the desired setup file.

Save the Setup File

Save the edited setup file as follows.

Screenshot 1

Operate using the buttons on the tool bar on the operation window.



Step 1

Click the [Save As] button on the tool bar after editing the setup file.

Screenshot 2

The "Save As" window will be displayed.



Step 2

Designate the file name and the directory where the file is to be saved.

Step 3

Click the [Save] button to save the setup file. The setup file will be saved.

Notes:

- The setup file will be saved as an xml format file (extension: xml).
- The following characters cannot be used for a file name.

\, /, :, *, ?, ", <, >, |

Important:

Do not edit the setup file using any other software such as a text editor. Otherwise, it may be impossible to open or upload the setup file with this software.

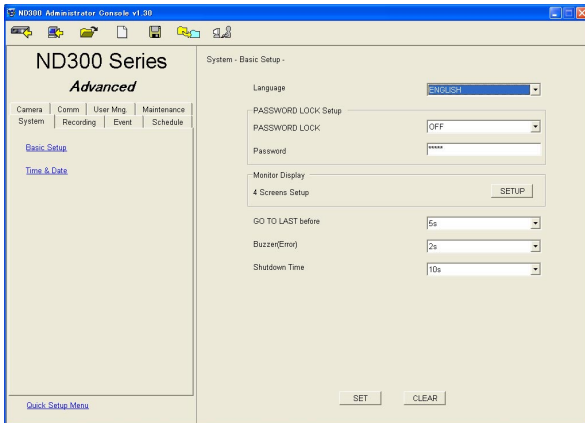
Any problem occurring which is caused by the edited setup file using other software is not covered by the warranty.

Create a Setup File Newly

Create a setup file newly as follows. The default setting values will be applied for a newly created setup file.

Screenshot 1

Operate using the buttons on the tool bar on the operation window.

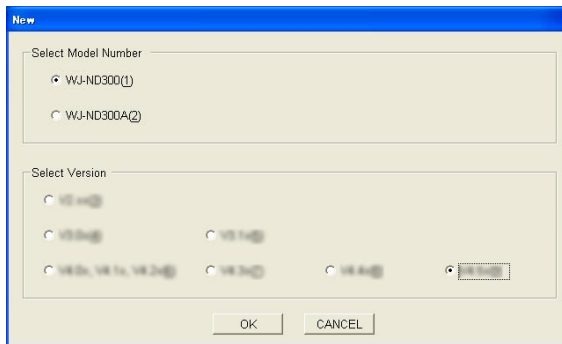


Step 1

Click the [New] button on the tool bar.

Screenshot 2

The version selection window will be displayed.



Step 2

Select the version of the WJ-ND300 (A) currently in use. The window to be displayed differs depending on version this software.

Step 3

Click the [OK] button.

A new setup file will be created and the top page of the operation window will be displayed.

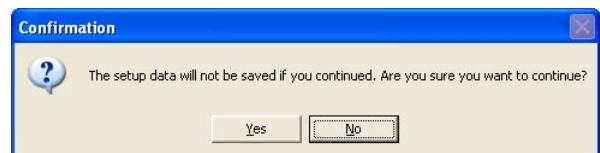
Important:

When creating a new setup file while the other setup file is being edited, the following window will be displayed.

When the [Yes] button is clicked, the newly opened setup file will overwrite the setup file currently being edited (with the default setting values).

When the file currently being edited is to be saved, click the [No] button to cancel creation of a new setup file.

Save the edited setup file first and then create a new setup file.

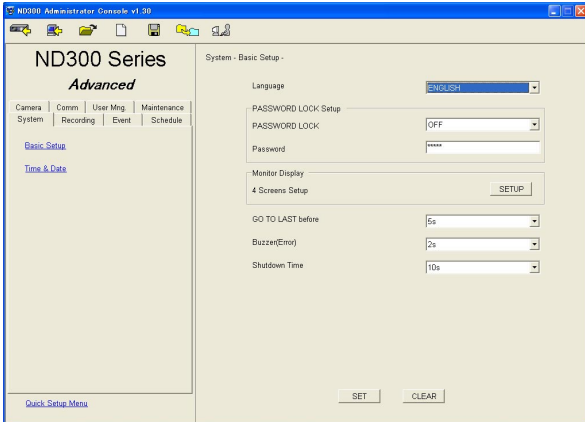


Convert the Version of the Setup File Format

It is possible to convert the version of the setup file format.

Screenshot 1

Operate using the buttons on the tool bar on the operation window.

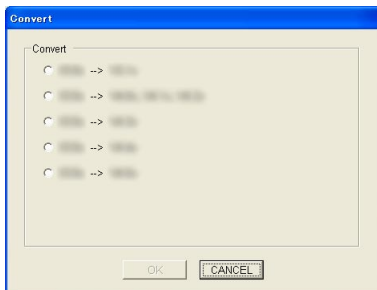


Step 1

Click the [Version conversion] button on the tool bar.

Screenshot 2

The version conversion window will be displayed.



Step 2

Select "Upgrade".

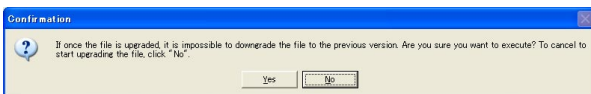
The window to be displayed differs depending on version this software.

Step 3

Click the [OK] button.

Screenshot 3

The confirmation window will be displayed.



Step 4

Click the [Yes] button.

Version conversion will start.

Screenshot 4

When version conversion is completed, the following window will be displayed.



Step 5

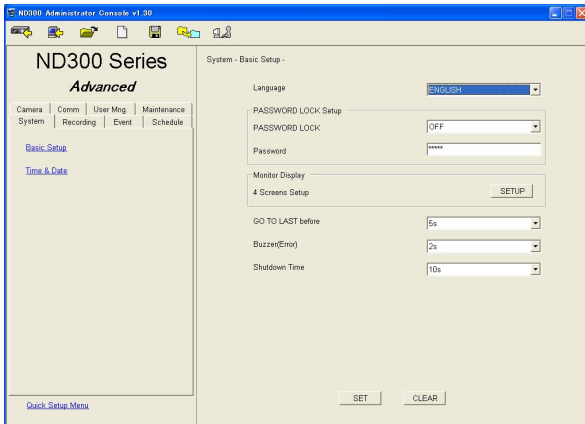
Click the [OK] button.

Change the Password

Change the login password as follows.

Screenshot 1

Operate using the buttons on the tool bar on the operation window.

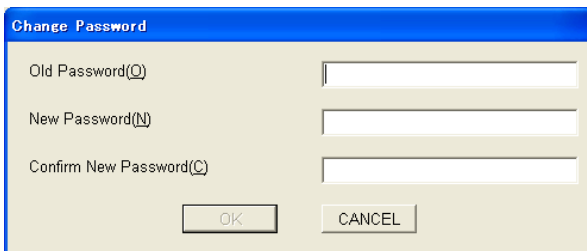


Step 1

Click the [Password] button on the tool bar.

Screenshot 2

The "Change Password" window will be displayed.



Step 2

Enter the current password in the "Old Password (O)" box.

Step 3

Enter the desired password to be used as a new password in the "New Password (N)" box. Enter up to 8 alphanumeric characters.

Step 4

Enter the new password in the "Confirm New Password (C)" box for confirmation.

Screenshot 3

When the password is changed successfully, the following window will be displayed.



Step 5

Click the [OK] button.

Step 6

Click the [OK] button on the displayed confirmation window.

Error Messages

At startup

| Message | Cause |
|--|---|
| Cannot load language data.(Label.txt is damaged.) Will show in English text. | The initial display setup file is broken. The broken part of the file will be displayed in English. Re-install this software to fix this problem. |
| Starting failure. The registry value may be changed. Please reinstall. | It may be possible that the registry values have been changed. Re-install this software to fix this problem. |

When downloading/uploading

| Message | Cause |
|---|---|
| Communication error. | It may be possible that the entered address is incorrect, connection to the network disk recorder has been disconnected, or no reply from the network disk recorder. Check if the entered address is correct or not. If the entered address is correct, check the connection of the network disk recorder. If it is possible to monitor live images using a web browser, it may be possible that timeout has occurred because the processing performance of the recorder has temporarily slipped. Check if alarm signals are being supplied continuously or not, and retry uploading. |
| Memory error. | Processing failed because of memory shortage. Close other applications and retry. If it fails again, restart the PC. |
| File error. | Check whether the write protection is applied for the folder in which this software is to be installed or not. Check also the available disk space. If this error occurs continuously, restart this software. |
| Incorrect password. | The entered Administrator Password of the network disk recorder is incorrect. Enter the correct Administrator Password. |
| Upgrade the setup menu of the WJ-ND300 to version 2.0 or later. | The setup file is about to be uploaded/downloaded to the WJ-ND300 whose setup menu version is older than version 2.0. Upgrade the setup menu of the WJ-ND300 to version 2.0 or later. |
| Since WJ-ND300 series differs from the version of a setup under edit, it cannot upload. | For example, the setup file whose version is 2.xx is about to be uploaded to the WJ-ND300 whose setup menu version is 3.xx, or vice versa. |

When opening a file

| Message | Cause |
|---|---|
| Cannot open setup file. | It is impossible to open the file because the file is corrupted. |
| Cannot open setup file. (Incorrect type (NTSC/PAL).) | It is impossible to open a file of this type since the television system (NTSC/PAL) is different. |

Troubleshooting

Before asking for repairs, check the symptoms with the following table.

Contact your dealer if a problem cannot be solved even after checking and trying the solution or a problem is not described below, and when having a problem with installations.

| Symptom | Cause/solution | Reference pages |
|-----------------------------------|---|--|
| Cannot access from this software. | <ul style="list-style-type: none"> Is the Ethernet cable firmly connected to the 10/100 BASE-T port? Confirm the cable is firmly connected. | - |
| | <ul style="list-style-type: none"> Is the connection indicator of the 10/100BASE-T port lit? When it is not lit, connection to a LAN is not established or a network is not working correctly. Confirm that the connection indicator of the 10/100BASE-T port is lit. Refer to a system administrator if it is not lit. | - |
| | <ul style="list-style-type: none"> Is the valid IP address set? Refer to a system administrator for further information. | Operating Instructions/ Setup Instructions |
| | <ul style="list-style-type: none"> Are you accessing the wrong IP address? Check the connection as follows: >ping "IP address of this unit" If there is a reply from this unit, the connection is normal. If not, check the settings of the IP address and the subnet mask. | - |
| | <ul style="list-style-type: none"> Is the same IP address provided to other devices? Refer to a system administrator for further information. | Operating Instructions/ Setup Instructions |
| | <ul style="list-style-type: none"> Are there contradictions between the address and the network subnet to be accessed? Or is "Use Proxy Server" for the settings of the browser checked? When accessing this unit in the same subnet, entering the address of this unit in the "Don't Use Proxy For These Addresses" box is recommended. | Operating Instructions/ Setup Instructions |

| Symptom | Cause/solution | Reference pages |
|--|---|-----------------|
| Cannot login. | <ul style="list-style-type: none"> • Are the correct password entered? Confirm the correct password. | 23 |
| The installer started up at startup of this software, or the message window saying that it is necessary to re-install this software was displayed. | <ul style="list-style-type: none"> • It may be possible that the initial setup files have been removed, edited, or moved from their original directory path. Re-install this software following the displayed instructions, or re-install after uninstalling the software. | 6, 7 |

For U.S. and Canada:

**Panasonic System Communications Company of North America,
Unit of Panasonic Corporation of North America**

www.panasonic.com/business/

For customer support, call 1.800.528.6747

Three Panasonic Way, Secaucus, New Jersey 07094 U.S.A.

Panasonic Canada Inc.

5770 Ambler Drive, Mississauga, Ontario, L4W 2T3 Canada
(905)624-5010

www.panasonic.ca

For Europe and other countries:

Panasonic Corporation

<http://panasonic.net>

Importer's name and address to follow EU rules:

Panasonic Testing Centre
Panasonic Marketing Europe GmbH
Winsbergring 15, 22525 Hamburg F.R.Germany