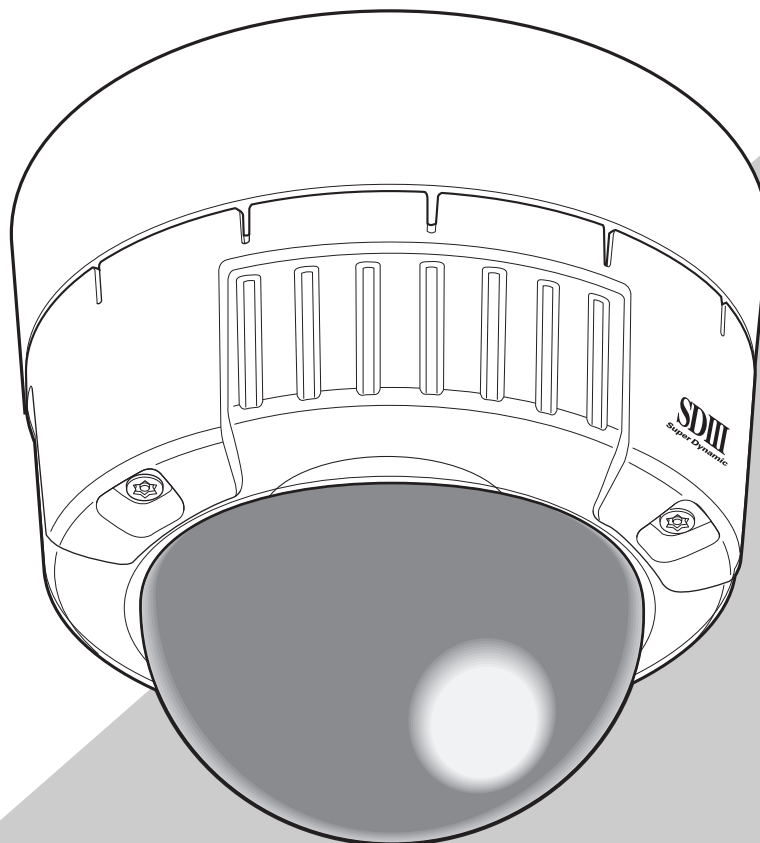


Panasonic

Network Camera

Operating Manual

Model No. **WV-NW484SE**



Before attempting to connect or operate this product,
please read these instructions carefully and save this manual for future use.
The model number is abbreviated in some descriptions in this manual.

Preface

About these operating instructions

The Instruction Manual for this camera is comprised of three parts: this manual (PDF), Setup Manual (PDF) and Operating Instructions.

This manual explains how to operate this camera on a personal computer (hereafter "PC") or over a network, and how to set up this camera on the PC.

For details on how to install this camera and how to connect it to network devices, refer to the "Operating Instructions."

To read the PDF manual, Adobe Systems Incorporated's Adobe® Reader® is required. If Adobe® Reader® is not installed on the PC, download the latest Adobe® Reader® from the Adobe web site and install it.

Trademarks and Registered Trademarks

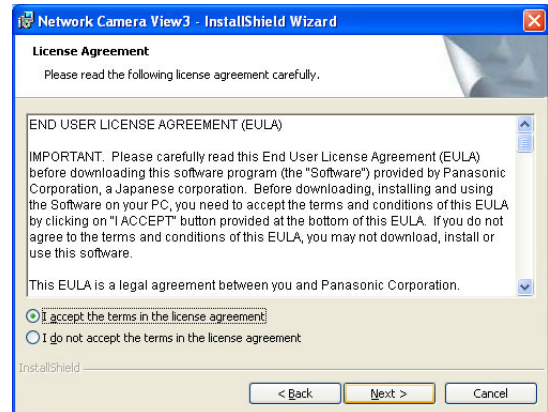
- Microsoft, Windows, ActiveX and DirectX are either registered trademarks or trademarks of Microsoft Corporation in the United States and/or other countries.
- Adobe and Reader are either registered trademarks or trademarks of Adobe Systems Incorporated in the United States and/or other countries.
- The SD logo is a trademark.
- Other names of companies and product contained in these operating instructions may be trademarks or registered trademarks of their respective owners.

Viewer Software

- Images will not be displayed when the viewer software "Network camera View3" is not installed on the PC. This software can be installed directly from the camera or by double clicking "nwcvc3setup.exe" on the CD-ROM provided, and then following the on-screen instructions.

Important

- The default setting of "Automatic installation of Viewer software" is "ON". Follow the instructions on Setup Manual when the message is displayed on the information bar of the browser.
- When the "Live" page is displayed for the first time, the install wizard of the ActiveX control required to display images from the camera will be displayed. Follow the instructions of the wizard.
- When the install wizard is displayed again even after completing the installation of the ActiveX, restart the PC.



-
- The viewer software used on each PC should be licensed individually. The number of installations of the viewer software from the camera can be checked on the [Upgrade] tab of the "Maintenance" page (→ Setup Manual). Refer to your dealer for the software licensing.

Contents

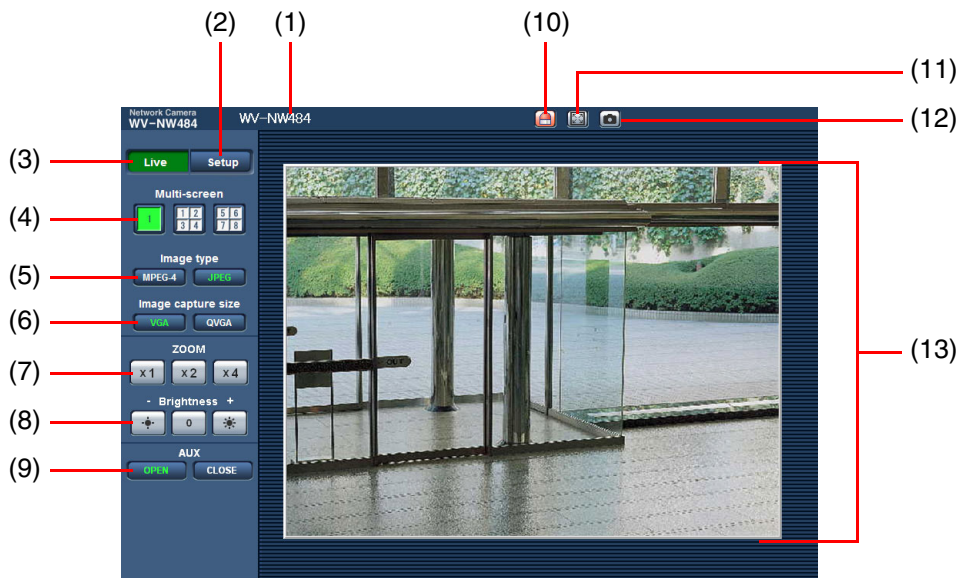
Preface	2
About these operating instructions.	2
Trademarks and Registered Trademarks	2
Viewer Software.....	3
Monitor Images on a PC.	5
About the Live Page.	5
Monitor images from a single camera	7
Monitor images from multiple cameras	9
Action at an alarm occurrence	10
Alarm type	10
Action at an alarm occurrence	10
Transmit Images to an FTP Server	13
Transmit an alarm image at an alarm occurrence (alarm image transmission).....	13
Transmit images at a designated interval or period (FTP periodic transmission)	14
Save images on the SD memory card when images fail to transmit using the FTP periodic transmission function	15
Viewing Help	16
Displaying the Help screen	16

Monitor Images on a PC

The following describes how to monitor images from the camera on a PC.

About the Live Page

The following shows the functions of the buttons in the "Live" page.



(1/2)

No.	Item	Description
(1)	[Camera title]	The camera title entered for "Camera title" on the [Basic] tab in the Setup menu is displayed. (→ Setup Manual)
(2)	[Setup] button ^{*1}	Click this button to display the setup menu.
(3)	[Live] button	Click this button to display the "Live" page.
(4)	[Multi-screen] buttons	Images from multiple cameras can be displayed on a multi-screen. To display images from multiple cameras, set the cameras to display in "Multi-screen setup" in the setup menu. (→ Setup Manual)
(5)	[Image type]	Click these buttons to display either MPEG-4 or JPEG images in the main area.
	[MPEG-4] button	Click this button to display MPEG-4 images. When "OFF" is selected for "MPEG-4 transmission" in the setup menu, the [MPEG-4] button will not be displayed. (→ Setup Manual)
	[JPEG] button	Click this button to display JPEG images.
(6)	[Image capture size]	Click these buttons to set the resolution of the main area to VGA or QVGA. These buttons will be displayed only when "JPEG" is selected as the image type.
	[VGA] button	Click this button to display images in the main area at VGA size.
	[QVGA] button	Click this button to display images in the main area at QVGA size.

No.	Item	Description
(7)	[ZOOM]	Click the desire button to enlarge the displayed image. These settings are different from those of the digital zoom settings screen (Operating Instructions). Only the main area image is enlarged and not the transmitted image.
	[X1] button	Return to the original display size (1x size).
	[X2] button	Display image with 2x size.
	[X4] button	Display image with 4x size.
(8)	[Brightness] ^{*2}	Click these buttons to adjust the brightness of the image.
	[-] button	The displayed image will be darker.
	[0] button	The adjusted brightness will return to the default brightness.
	[+] button	The displayed image will be brighter.
(9)	AUX ^{*2}	Click these buttons to switch the state of the AUX connector.
	[OPEN] button	Sets the AUX connector to open.
	[CLOSE] button	Sets the AUX connector to close.
(10)	[Alarm occurrence indication] button ^{*2}	This button will be displayed and will blink when an alarm has occurred. When this button is clicked, the alarm output terminal will be reset and this button will disappear. (→ Setup Manual)
(11)	[Full screen] button	Click this button to display images on a full screen. To return to the "Live" page, press the [Esc] key or the [F5] key, or the combination of the [Alt] key and [F4] key on the PC's keyboard.
(12)	[One shot] button	Click this button to take a picture (a still picture) and display it in a newly opened window. To save the image to PC, right-click on the displayed image and select "Save" from the pop-up menu.
(13)	Main area	Images from the camera are displayed in this area. The current date and time are displayed at the selected position in the date and time format set in the setup menu. (→ Setup Manual)

*1 Only operable by users whose access level is "1. Administrator".

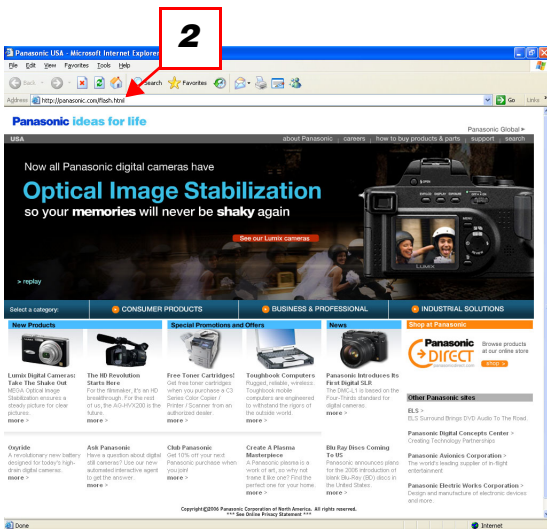
*2 Only operable by users whose access level is "1. Administrator" or "2. Camera control" when "ON" is selected for "User authentication" or "Host authentication". For further information about the access level, refer to the Setup Manual.

Note

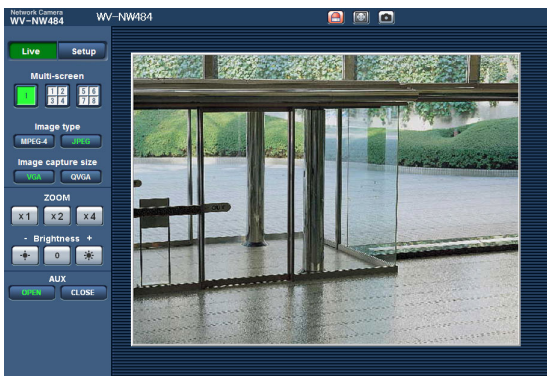
- When the camera is operated by a lower access level user, images displayed on the screen may be changed temporarily. This does not affect operation of the camera.
-

Monitor images from a single camera

- Web browser window



- "Live" page



- 1 Launch the web browser on the PC.
- 2 Enter the IP address designated using the Panasonic IP setup software (→ Operating Instructions) in the [Address] box of the browser.
(Example: http://192.168.0.10)

Note

- When the HTTP port number has been changed from "80", enter "http://IP address of the camera:port number".
- When the DDNS function has been set to "ON", enter "http://host name registered to DDNS server.nmdns.net/".
- When this camera is to be used in a local area network, configure the web browser to bypass the proxy server for the local address.

- 3 Press the [Enter] key.

If user authentication is turned "ON" then the user name and password input screen appears. Enter a registered user name and password. (→ Setup Manual)

Important _____

- The default user name is "admin" and default password is "12345".
To enhance the security, be sure to change the password for the user name "admin".
- When displaying multiple MPEG-4 images on a PC, images may not be displayed depending on the performance of the PC.
For details on the required PC environment, refer to Operating Instructions.

- 4 Display images from the camera.

Note

- When "Unicast port (AUTO)" or "Unicast port (MANUAL)" is selected for "Transmission type", up to 8 users can access the camera concurrently.
Depending on the setup values for "Total bit rate" and "Max bit rate (per 1 client)", the maximum number of access users may be limited to 8 or less users. (→ Setup Manual)
When the number of users exceeds the maximum number of concurrent access users, the access limit message will be displayed.
- When "ON" is selected for "MPEG-4 transmission", an MPEG-4 image will be displayed. When "OFF" is selected, a JPEG-4 image will be displayed. It is possible to display a JPEG image even when "ON" is selected for "MPEG-4 transmission." In this case, the refresh interval will be limited.
The refresh interval may be longer depending on the network environment, PC performance, photographic subject, and access traffic. (→ Setup Manual)

Refresh interval

MPEG-4 transmission: ON	MPEG-4 transmission: OFF
JPEG (VGA): 5fps	JPEG (VGA): 30fps
JPEG (QVGA): 10fps	JPEG (QVGA): 30fps

Monitor images from multiple cameras

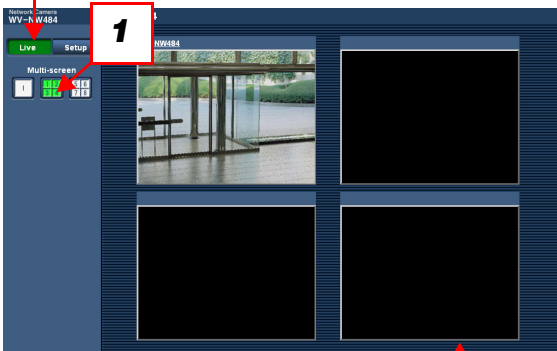
Images from multiple cameras can be displayed on a multi-screen. 4 cameras can be registered as a group, and camera images for up to 8 cameras (2 groups) can be displayed simultaneously in a multi-screen. For further information about registering cameras, refer to the Setup Manual.

Important

- Only JPEG images can be displayed on a multi-screen.
 - When the power is turned off or the LAN cable is disconnected while displaying images, displaying images on a multi-screen from the "Live" page will become unavailable.
-

- Multi-screen window

To display images on a single screen, click the [Live] button.



Click a camera title. Live images from the camera corresponding to the clicked camera title will be displayed on the "Live" page of the newly opened window.

- 1 Click the [Multi-screen] button. Images from the registered cameras will be displayed on a 4-split screen.

Action at an alarm occurrence

When a "Terminal alarm", "VMD alarm", "Scene change detection alarm" or "Command alarm" occurs, alarm action is performed according to the setup for that alarm. For details on how to set alarms, refer to the Setup Manual.

Alarm type

Terminal alarm	: Alarm action will be performed when the alarm device connected to the cable is activated.
----------------	---

VMD alarm	: Alarm action will be performed when a change (i.e. motion) is detected in the image in the set VMD area. *VMD stands for "Video Motion Detector".
-----------	--

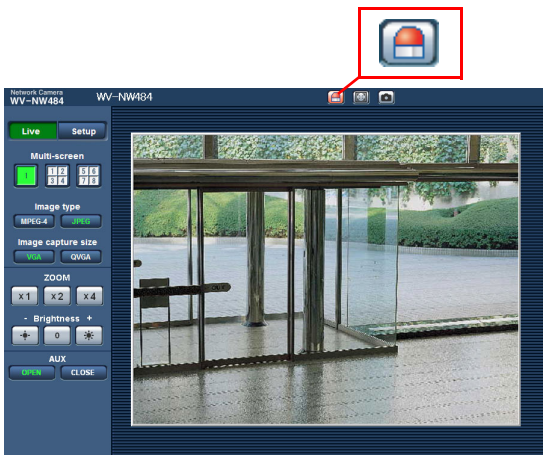
Scene change detection alarm	: The alarm sounds if the machine is covered with a cloth, the orientation is changed or some other interference occurs.
------------------------------	--

Command alarm	: Alarm action will be performed when a Panasonic alarm notice is received from a connected device via the network.
---------------	---

Action at an alarm occurrence

- Display of the [Alarm occurrence indication] button on the "Live" page (→ Setup Manual)

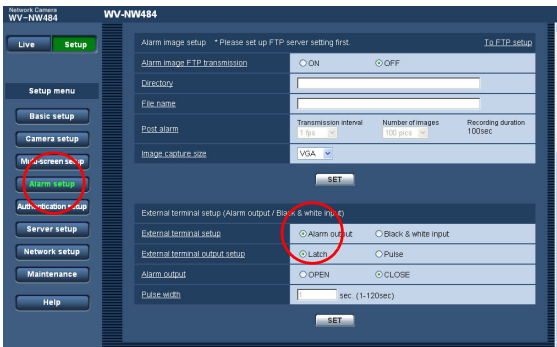
The [Alarm occurrence indication] button will be displayed and will blink on the "Live" page when an alarm occurs.



Important

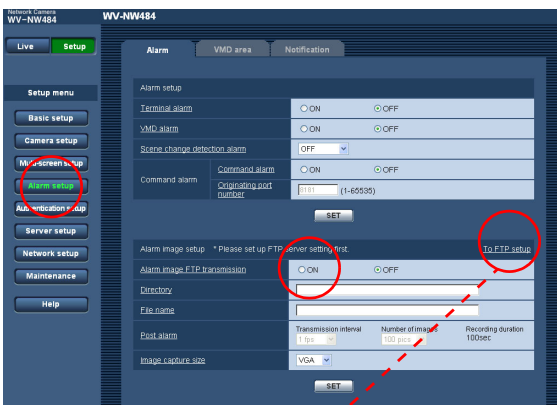
- When "Polling(30 sec)" is selected for "Alarm status update mode", the [Alarm occurrence indication] button will be refreshed in 30-second intervals. For this reason, it may take a maximum of 30 seconds until the alarm occurrence indication button is displayed on the "Live" page when an alarm occurs. (→ Setup Manual)

- Notice of an alarm occurrence to the device connected to the alarm output terminal (→ Setup Manual)



It is possible to output signals from the alarm output terminal and sound the buzzer when an alarm occurs. The settings for the alarm output can be configured on the [Alarm] tab of the "Alarm setup" page.

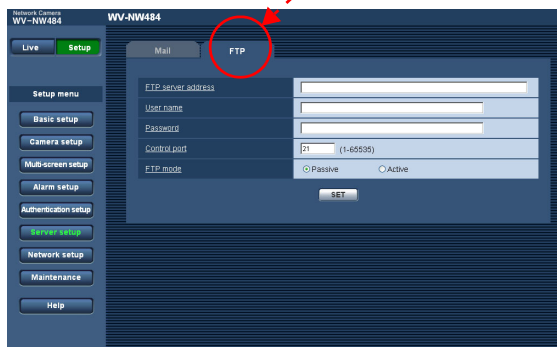
- Transmission of an image to a server automatically (→ Setup Manual)



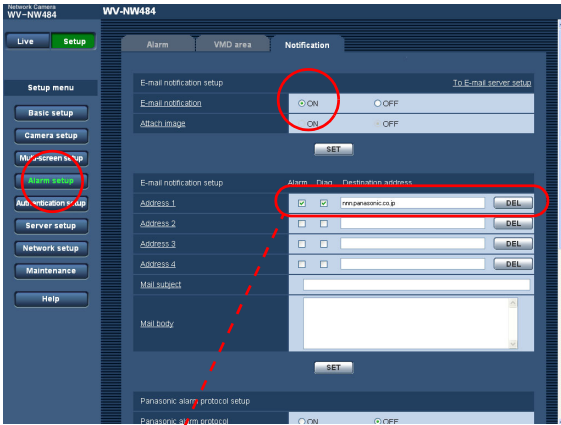
An alarm image can be transmitted to a predesignated FTP server when an alarm occurs. The settings required to transmit an alarm image to a FTP server can be configured on the [Alarm] tab of the "Alarm setup" page or on the [FTP] tab of the "Server setup" page.

Important

- Select "FTP error" for "Save trigger" on the [SD memory card] tab of the "Basic setup" page when using the SD memory card. When "Alarm input" is selected for "Save trigger", an alarm image will not be transmitted to the FTP server when an alarm occurs.

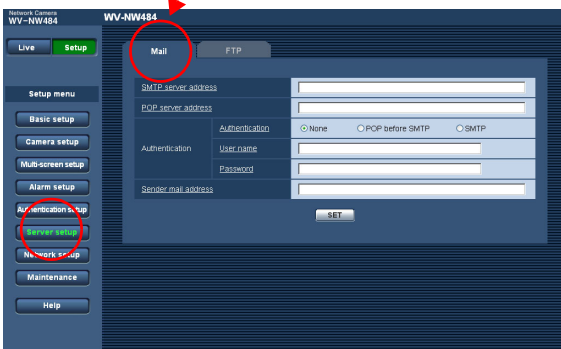


- Notice of an alarm occurrence by e-mail (→ Setup Manual)

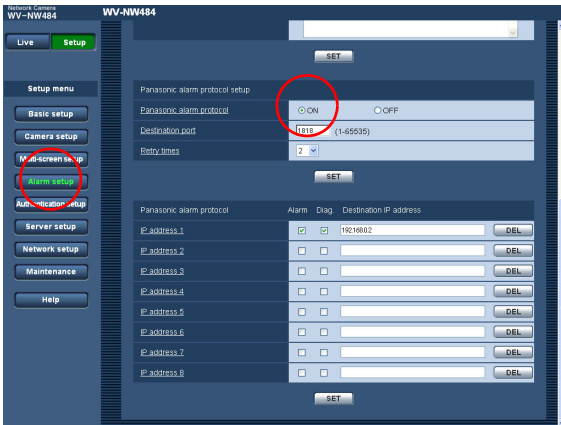


Alarm mail (notification of an alarm occurrence) can be sent to preregistered e-mail addresses when an alarm occurs. Up to 4 addresses can be registered to receive the alarm mail. An alarm image (still picture) can be sent with the alarm mail as an attached file.

The settings for alarm mail can be configured on the [Notification] tab of the "Alarm setup" page and on the [Mail] tab of the "Server setup" page (→ Setup Manual).



- Notice of an alarm occurrence to desired IP addresses (Panasonic alarm protocol) (→ Setup Manual)



Preset IP addresses can be notified of an alarm occurrence.

This function is available only when a Panasonic device, such as the network disk recorder, is connected to the system. When "ON" is selected for "Panasonic alarm protocol", the connected Panasonic device will be notified that the camera is in the alarm state.

The settings for Panasonic alarm protocol can be configured on the [Notification] tab of the "Alarm setup" page.

Transmit Images to an FTP Server

Images can be transmitted to an FTP server. By configuring the following settings, transmission of images captured when an alarm occurs or captured at a designated interval and sent to an FTP server will become available.

Important

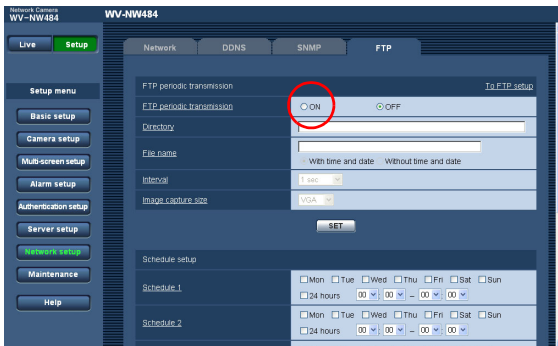
- When using this function, set the user name and the password to access the FTP server to restrict users who can log into the FTP server. (→ Setup Manual)
 - To transmit images to the FTP server, select "Not use" for "SD memory card" or select "FTP error" for "Save trigger" on the [SD memory card] tab of the "Basic setup" page. (→ Setup Manual)
 - Depending on the network environment in use, results according to the setup may not be obtained.
-

Transmit an alarm image at an alarm occurrence (alarm image transmission)

An alarm image can be transmitted to the FTP server when an alarm occurs. To transmit alarm images to an FTP server, it is necessary to configure the settings on the [FTP] tab of the "Server setup" page. (→ Setup Manual)

The alarm image can be configured on the [Alarm] tab of the "Alarm setup" page. (→ Setup Manual)

Transmit images at a designated interval or period (FTP periodic transmission)



Images can be transmitted at a designated interval or period. To transmit images at a designated interval or period, it is necessary to configure the settings in advance.

The settings for the FTP server to which images are to be transmitted can be configured on the [FTP] tab of the "Server setup" page.

(→ Setup Manual)

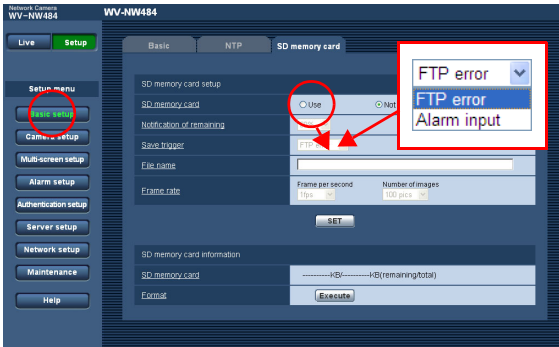
On the [FTP] tab of the "Network setup" page, the FTP periodic transmission function can be turned on/off and the settings relating to schedules (periods) can be configured.

(→ Setup Manual)

Note

- When "ON" is selected for both the alarm image transmission function and the FTP periodic transmission function, the alarm image transmission function will be given priority over the FTP periodic transmission function. For this reason, images may not be transmitted at the exact designated interval or period if alarms occur frequently.

Save images on the SD memory card when images fail to transmit using the FTP periodic transmission function



Images that have failed to transmit using the FTP periodic transmission function can be saved automatically on the SD memory card. The settings for saving images on SD memory card can be configured on the [SD memory card] tab of the "Basic setup" page.

(→ Setup Manual)

Note

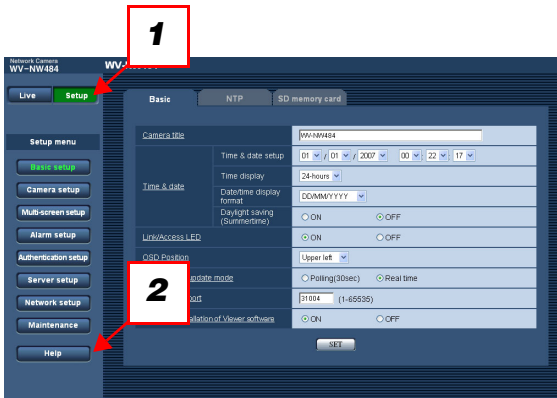
- To use the SD memory recording function featured in Panasonic's network disk recorder, select "OFF" for "FTP periodic transmission" (→ Setup Manual) and "FTP error" for "Save trigger" (→ Setup Manual) on the [SD memory card] tab of the "Basic setup" page.
- We do not guarantee contents recorded on an SD memory card, regardless of the cause of malfunction or failure.
- Insert a new SD memory card or one already formatted according to the SD standard.

Viewing Help

If you want to know anything about operation or setup methods on screen, display the "Help" screen.

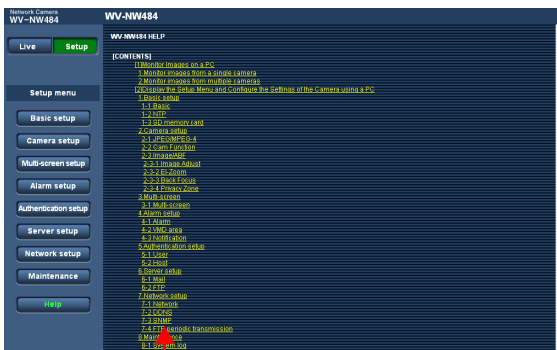
Displaying the Help screen

- Setup screen



- 1 Click the [Setup] button.
The setup screen is displayed.
- 2 Click the [Help] button.
The "Help" screen is displayed.

- Help screen



Click the desired item to display a detailed explanation for the corresponding operation.

Panasonic Corporation

<http://panasonic.net>

Importer's name and address to follow EU rules:

Panasonic Testing Centre
Panasonic Marketing Europe GmbH
Winsbergring 15, 22525 Hamburg F.R.Germany