

How to use Decryption tool

1. General

This tool is to decrypt MP4 files that have been encrypted by cameras for security purpose.

You will be able to playback/display by decryption.

Here are the procedures to decrypt as follows.

Target files

Files	Compatibilities	Remarks
MP4(H.265+AAC)	Yes	
MP4(H.264+AAC)	Yes	
MP4(H.265 w/o audio)	Yes	
MP4(H.264 w/ audio)	Yes	
JPG	Yes	

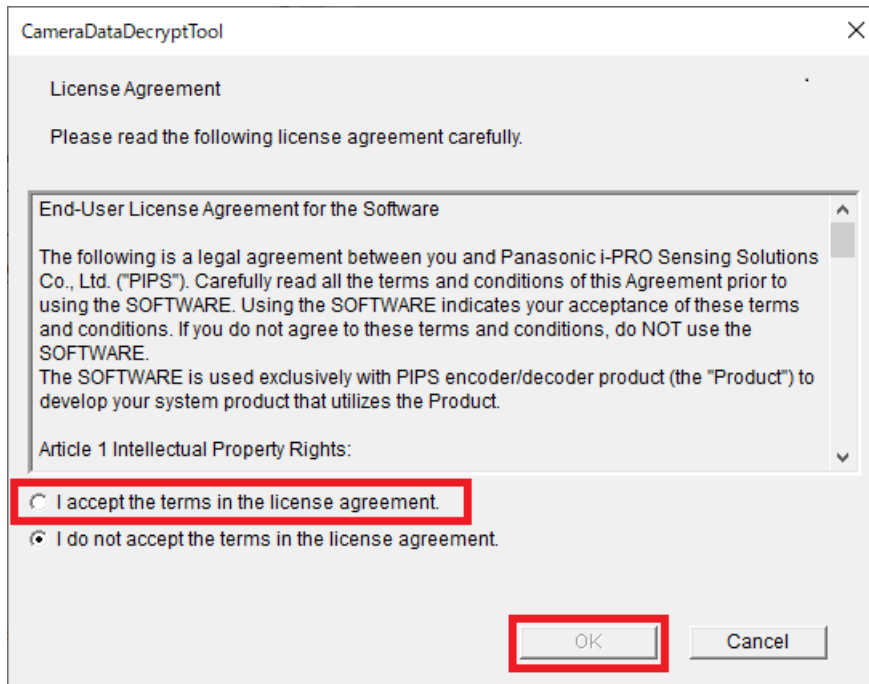
2. Procedures

2-1. Download “CameraDataDecryptTool.zip” at our Support web-site and unzip it.

You will get “CameraDataDecryptTool.exe” with two more files.

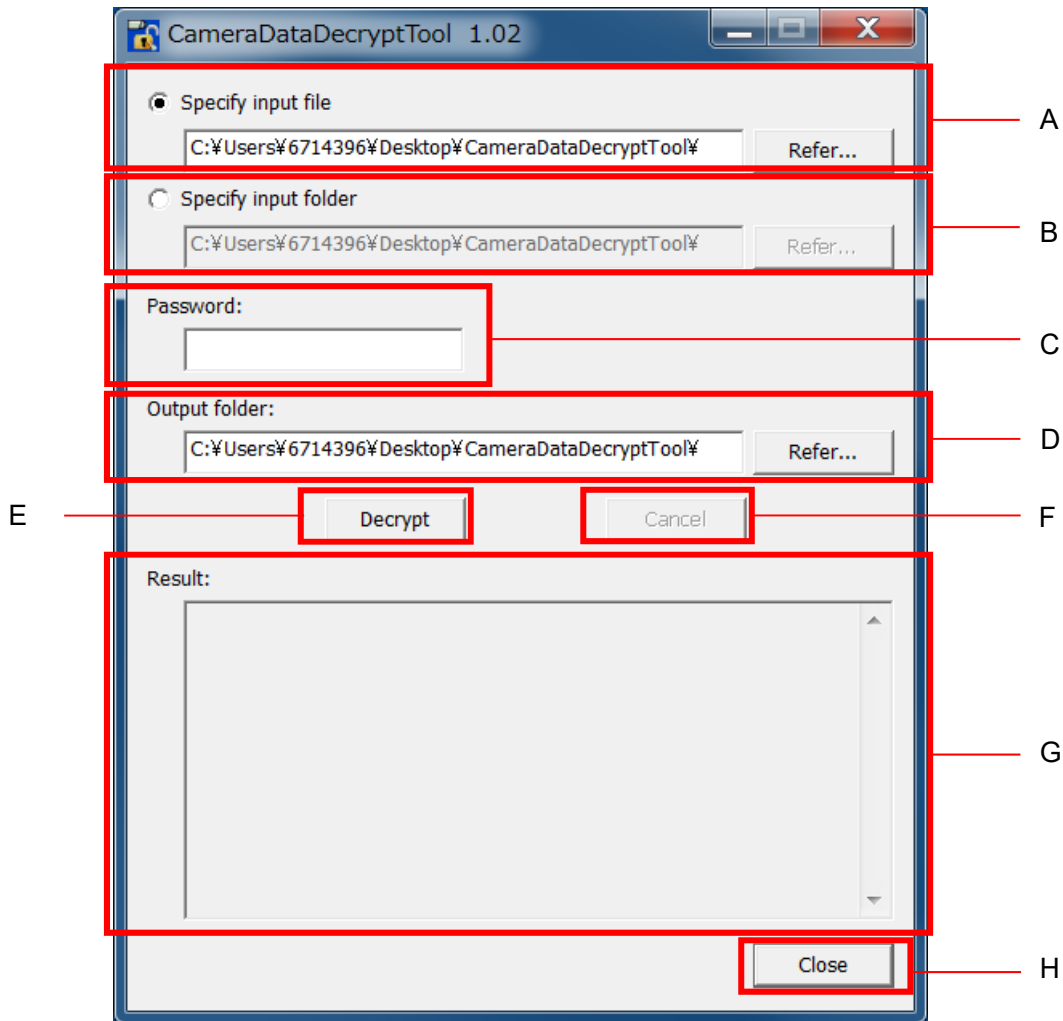
Run “CameraDataDecryptTool.exe”.

You will see the License Agreement at first time only.



Read the license agreement carefully and choose the radio button of “I accept the terms in the license agreement.”, then click “OK” button.

*: Please note that the display is in English only.



2-2. Select input file or Specify input folder

You can choose "Select input file" or "Specify input folder".

Default: Select input file

A Specify input file

Click "Refer" button to specify a file.

You cannot specify two or more files.

B Specify input folder

Click "Refer" button to specify a folder that contains a file.

All files of JPG and MP4 in the folder will be decrypted.

The files in the sub-folders will not be decrypted.

You cannot specify two or more folders.

2-3. Input the same password as encryption.

C Password:

To verify the password:

Click the "Data encryption" tab in "User mng." of the camera.

D Output folder:

It is the target folder for the decrypted file to be output.

Click "Refer" button to specify a target folder.

You cannot specify two or more folders.

E Decrypt

Click the button to start decrypting.

An output folders will be created automatically if it were NOT exist

*: The followings will be inspected at start decrypting and quit ("Result:" shows the reason why it was quitted):

- No password input
- No password input
- No files are specified if "Specify input file" is selected.
- File is not specified or not exist "Specify input file" is selected.
- Folder is not specified or not exist "Specify input folder" is selected.
- Input and Output folders are same if "Specify input folder" is selected.
- Unable to create a target folder.

F Cancel

Click to cancel decrypting.

Quit processing on file basis.

G Result:

Display the decryption result.

H Close

Exit the decryption tool.