

ii-PRO

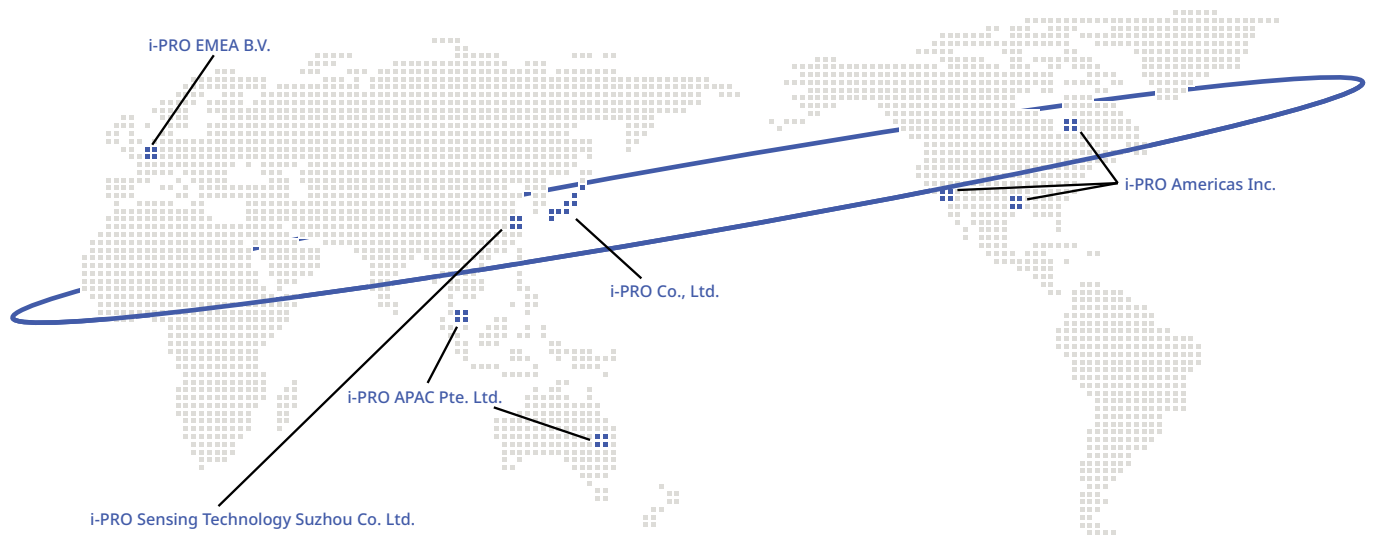
Spring
2026


PRODUCT
LINEUP

COMPANY INFORMATION

Company Name	i-PRO Co., Ltd.
Established	2019
Representatives	Masato Nakao Shohei Ozaki
Lines of Business	Development, manufacture and sales of devices and modules for the security, medicine and industrial fields. Providing solutions including system integration, construction, maintenance and related services.
Number of Employees	Approx. 1400 (including group companies)
Location Addresses	<ul style="list-style-type: none"> ■ 2-15-1 Konan, Minato-ku, Tokyo, Japan ■ 7-9-66 Hakozaiki, Higashi-ku, Fukuoka City, Fukuoka, Japan

Manufacturing Facility	Saga Factory : 1484 Muratacho, Tosu City, Saga, Japan
Group Companies	<p>Americas: i-PRO Americas Inc. Houston : 8550 Fallbrook Road, Suite 200, Houston, TX 77064, USA Anaheim : 2390 E. Orangewood Ave., Suite 490, Anaheim, CA 92806, USA Canada : 5750 Explorer Drive, Suite 101, Mississauga, Ontario, Canada</p> <p>EMEA : i-PRO EMEA B.V. Amsterdam: Laarderhoogtweg 25, 1101 EB Amsterdam, Netherlands</p> <p>Asia Pacific: i-PRO APAC Pte. Ltd. Singapore : 114 Lavender #01-36,51,52, CT Hub 2, Singapore 338729 Brisbane : 10/10 Depot Street, Banyo QLD, Australia 4014</p> <p>China: i-PRO Sensing Technology (Suzhou) Co., Ltd. 1478 Binhe Road, Huqiu district, Suzhou, Jiangsu province</p>





The Power of Truth

We strive to capture moments of underlying truth to better support the decisions of those professionals who protect and save lives, providing a safer and more peaceful world.

We have taken on this challenge to develop technological solutions that extend human senses with innovations that inform and protect, even in the most challenging environments.

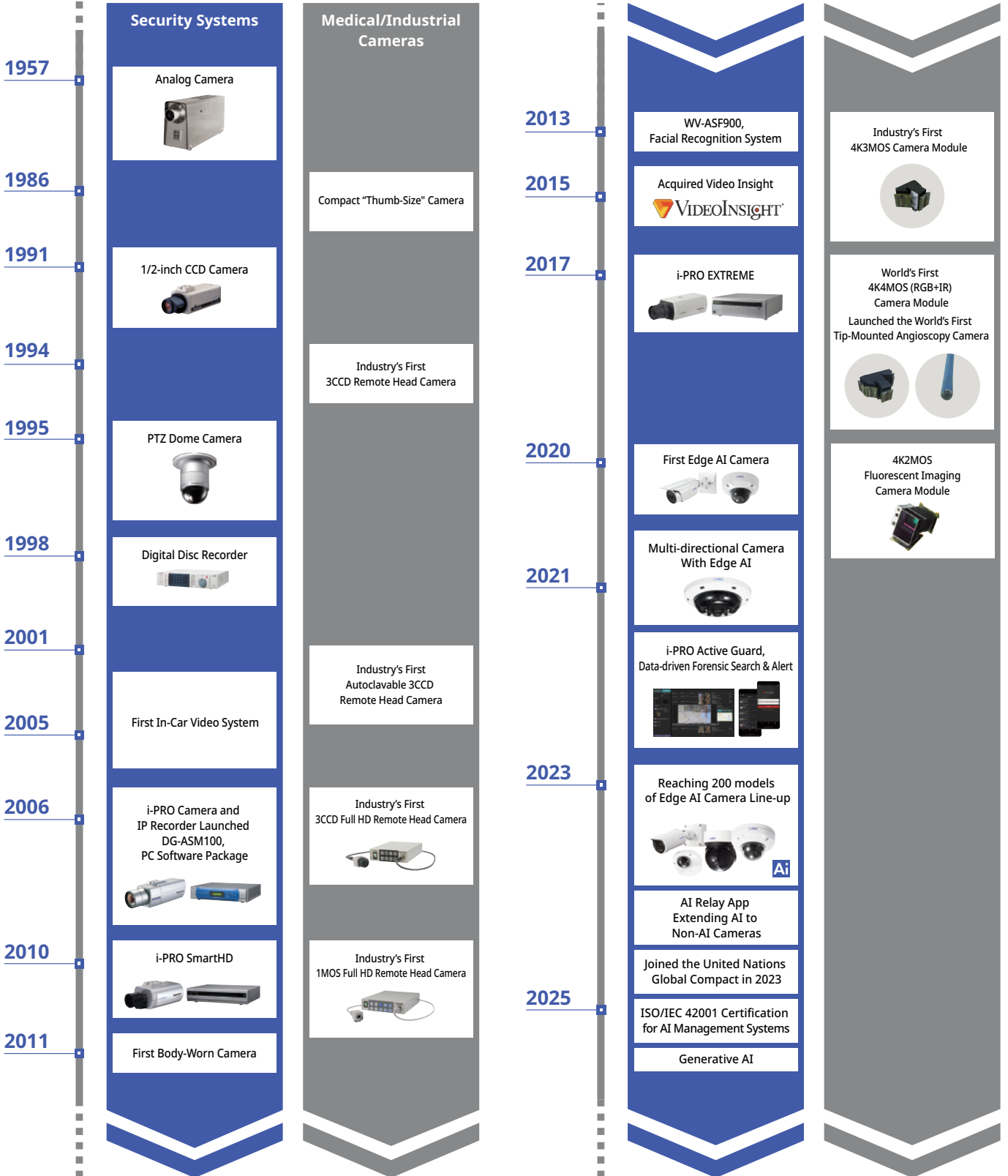
We envision a future where it's possible to prevent unfortunate events. A future striking unmet medical conditions to improve the lives of millions of people.

We will be a trusted partner, focusing on the needs of our partners and customers to help create a safer and more peaceful world.

PRODUCT & TECHNOLOGY MILESTONES

i-PRO Co., Ltd., formerly a division of Panasonic, is a leading global manufacturer of edge computing cameras for security, safety, and medical applications. With over 60 years of expertise in high-quality and reliable hardware, the company now pioneers the transformation of video data into practical applications.

i-PRO products are designed for flexible customization and integration to meet the specific needs of any use case. We are committed to the ethical and responsible use of AI and cybersecurity for data integrity, and provide our partners, customers, and users with innovative and sustainable technologies.



CONTENTS

i-PRO CORE TECHNOLOGY

Edge AI Technology	6
Open Platform	6
Cyber Security	7
Product Reliability	7
Reduced Bandwidth	8
Ease of Installation.....	8

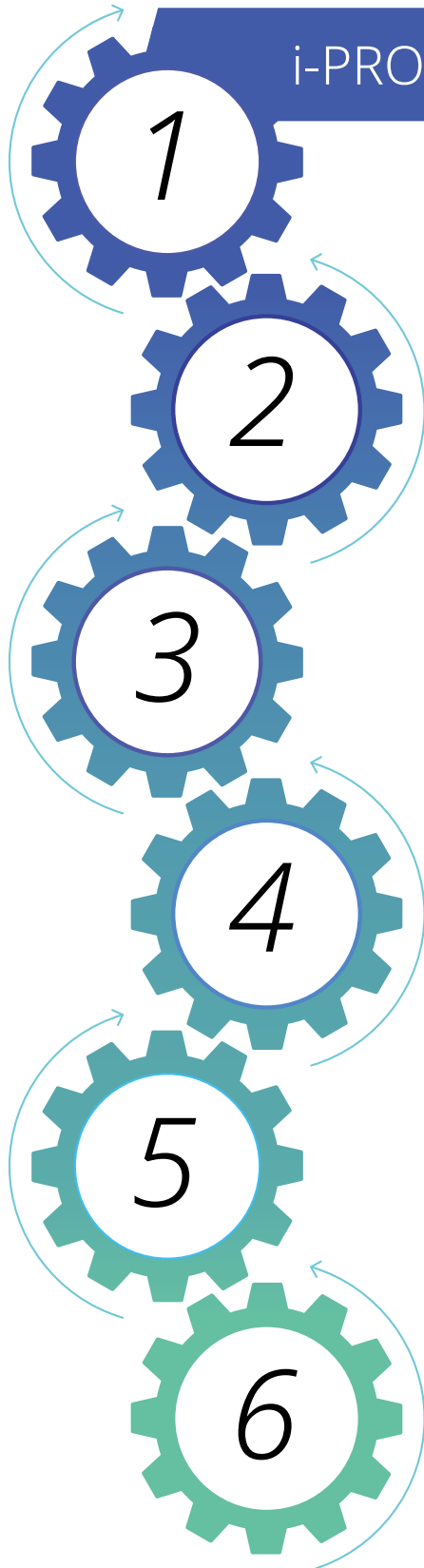
i-PRO PRODUCTS

i-PRO Product Selector	9
Multi-Sensor Cameras.....	10
Outdoor PTZ Cameras	11
Indoor PTZ Cameras.....	14
Outdoor Dome Cameras.....	15
Indoor Vandal Dome Cameras.....	18
Indoor Dome Cameras	20
Bullet Cameras.....	21
Box Cameras	23
Fisheye Cameras	24
Outdoor Compact Cameras.....	26
Indoor Compact Cameras.....	26
i-PRO Active Guard.....	27
Edge AI Analytics	28
Management Software	29
i-PRO Mobile APP	29
NVR WJ-NX310 / NX410 / NX510 Series	30
NVR with a build-in PoE+ switch	
WJ-NU101 / 201 / 300 / 301 Series	31
Accessories	32
Security Radar	33
Network Camera Model Number Format.....	33
System Design Tool	34
i-PRO Configuration Tool (iCT).....	34

SECURITY CAMERA ACCESSORY CHART

MULTI-DIRECTIONAL + PTZ CAMERAS	36
MULTI-SENSOR CAMERAS.....	36
DUAL-SENSOR CAMERAS	37
OUTDOOR PTZ CAMERAS	37/38/39/40
INDOOR PTZ CAMERAS	41
CORNER CAMERA.....	42
OUTDOOR DOME CAMERAS	42
INDOOR DOME CAMERAS.....	43
COMPACT DOME CAMERAS.....	44
HIGH ZOOM BULLET CAMERA.....	44
OUTDOOR BULLET CAMERAS	45
INDOOR BOX CAMERAS.....	45
OUTDOOR / INDOOR FISHEYE CAMERAS.....	46
COMPACT DOME CAMERAS.....	47
INDOOR COMPACT CAMERA.....	47

i-PRO CORE TECHNOLOGY



Edge AI Technology

- i-PRO Edge AI Cameras
- i-PRO Active Guard
- Computer Vision Chip Architecture
- Wide Variety of Edge AI Cameras

Open Platform

- Integration with Leading VMS
- Integration with AI Application Partners
- Provides Development Support with Free SDK/API

Cyber Security

- Built-In Cybersecurity Features
- Pre-Installed Signed Certificates
- FIPS-Compliant Secure Element
- NDAA-Compliant

Product Reliability

- Environmental Resistance
- Vandal Resistance
- Corrosion Resistance
- ClearSight Coating
- High Durability Mechanism for PTZ Cameras

Reduced Bandwidth

- ROI (Region of Interest)
- GOP Control

Ease of Installation

- Cameras Designed for Easier Installation
- Easy Kitting Package
- Installation Tools

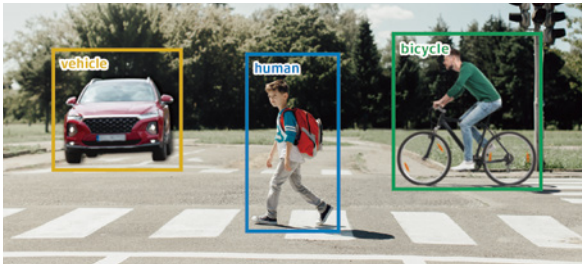
■ EMEA
https://i-pro.com/products_and_solutions/eu-en/surveillance/solutions/technologies/ipro-core-technology

■ APAC
https://i-pro.com/products_and_solutions/apac-en/surveillance/solutions/technologies/ipro-core-technology

Edge AI Technology

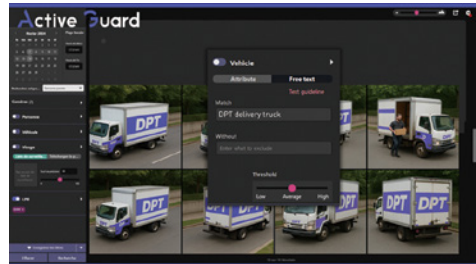
i-PRO Edge AI Cameras

With powerful Edge AI processor at the edge, i-PRO network cameras can process advanced analytics locally and only send the lightweight results as metadata to the backend server.



i-PRO Active Guard

i-PRO Active Guard is a time-saving search software which will help you to find out a specific objects quickly based on the metadata information from i-PRO Edge AI cameras.



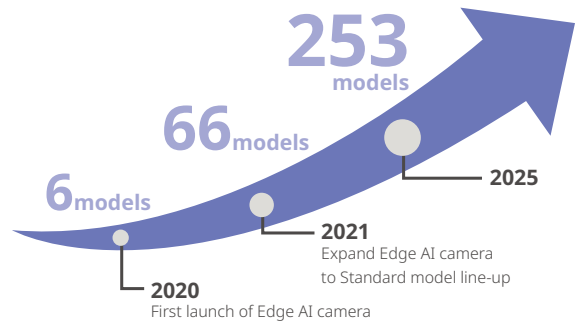
Computer Vision Chip Architecture

Collaborating with AI SoC company Ambarella, i-PRO network cameras have on-boarding advanced analytics technologies inside.



Wide Variety of Edge AI Cameras

i-PRO keeps expanding the product line-up of edge AI capable cameras since 2020 and it is growing to 253 models in 2025.



Open Platform

Integration with Leading VMS

i-PRO network cameras are well integrated with leading VMS software, and i-PRO Active Guard integrated with in-house VMS Video Insight as well as Genetec Security Center and Milestone XProtect.



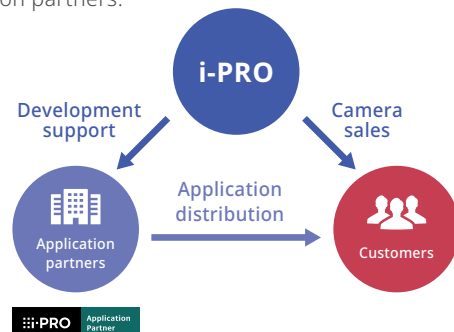
Integration with AI Application Partners

We will provide various AI applications developed in-house and developed by our global AI application partners.



Provides Development Support with Free SDK/API

Free SDK/API and technical support is available for application partners.



Cyber Security

Built-In Cybersecurity Features

i-PRO cameras are designed and built with trust, safety, and security in mind. We take cyber security just as seriously as the lives and assets our products are made to protect. Our cameras include robust security features to meet the needs of customers who comply with security frameworks.



Pre-Installed Signed Certificates (GlobalSign®)

i-PRO was the first company in the security industry to provide a pre-installed signed certification by 3rd party certificate authority. Data is encrypted by SSL with pre-installed certified key and it will not allow any snooping and alteration.

FIPS-Compliant Secure Element

FIPS (Federal Information Processing Standards) are standards and guidelines for federal computer systems that are developed by NIST. Our latest i-PRO network camera models are equipped with a Secure Element that is FIPS compliant.

NDAA-Compliant

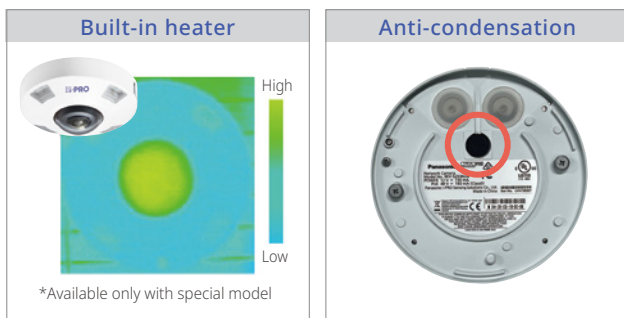
i-PRO is proud to confirm that our products are compliant under the National Defense Authorization Act (NDAA). i-PRO doesn't use any manufactures, system on chips or any other components that have been banned under section 889 of the NDAA.



Product Reliability

Environmental Resistance

i-PRO cameras are engineered to withstand extreme environmental conditions, including extreme temperatures, humidity, dust, and wind. Through rigorous testing during product development, we ensure that our cameras deliver reliable performance even in harsh environments.



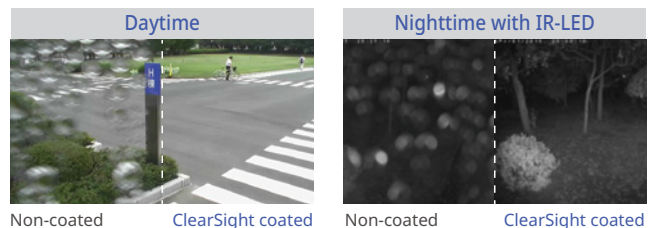
Corrosion Resistance

Salt resistant models with special coating on the camera body and screws will work without a corrosion even in salt-air condition.



ClearSight Coating

Our ClearSight coating enables to repel water drops on the dome cover in raining. This will provide you clear image in daytime and nighttime.



Vandal Resistance

Vandal resistance is one of the most important features of security cameras. IK10 rating indicates that the camera has a superior level of resistance against impact. All i-PRO outdoor cameras comply the IK10 rating or more, which provides protection from physical damage.



High Durability Mechanism for PTZ Cameras

Pan/Tilt gear drive mechanism allows our i-PRO PTZ cameras to have longer life and more preciseness than a general belt-drive mechanism.



Reduced Bandwidth

ROI (Region of Interest)

ROI reduces bit rate via AI object detection by using Smart VIQS to assign different data rates to important and non-important areas. Smart P Picture Control can further compress images by skipping the encoding of non-object detected areas.



GOP Control

GOP control adjusts the length of the Group of Pictures (GOP) based on object detection. It shortens the GOP length in scenes with detected objects for better random accessibility and extends it in scenes without detected objects to reduce the bit rate.

Ease of Installation

Cameras Designed for Easier Installation

i-PRO cameras are designed for hassle-free installation by a single installer. Specialized features like a hooking structure, lightweight design, and temporary holding structure make setup quick and easy.

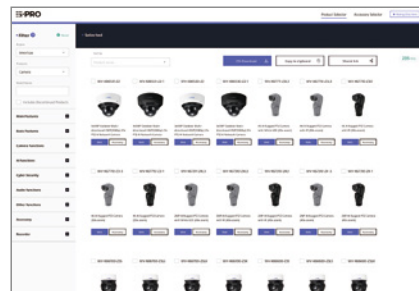


Installation Tools

i-PRO provides useful installation tools to support system design and configuration works easier and more efficient.

Product Selector

Find and compare i-PRO camera products.



System Design Tool

Integrators can quickly simulate any design or setup.



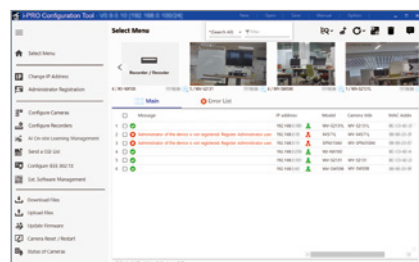
Easy Kitting Package

The i-PRO easy kitting package is helpful for rapid pre-configuration of multiple devices. Cameras can be configured quickly without opening the box.



i-PRO Configuration Tool

Efficiently configure, maintain, and update multiple devices.



i-PRO NETWORK PRODUCTS



Multi Sensor Cameras

i-PRO multi-sensor cameras capture the highest quality images even in very challenging dynamic environments. These cameras can excel at capturing clear images, even in low light conditions from multiple angles through the use of their four repositionable lenses.



Bullet/Box Cameras

i-PRO fixed box bullet/box cameras provide a clearly visible, fixed angle of view, making it easy to see exactly where they're pointing and record a precisely defined area.



PTZ Cameras

i-PRO PTZ cameras combine unparalleled image quality with incredible durability and reliability. The perfect security camera for wide-area coverage requiring pan, tilt and zoom capability.



360 Degree Cameras

i-PRO vandal resistant 360° dome cameras are ideal for surveillance applications where wide area coverage is required. This type of camera allows for multiple viewing angles and can be used to improve area management as well as detect activities in a large area.



Dome Cameras

i-PRO fixed dome cameras have the power to be more discreet than standard fixed network cameras. i-PRO fixed dome cameras work well in busy open areas since they can conceal which direction they are pointing while still providing excellent and reliable video.



Compact dome

Compact dome cameras with anti vibration and discreet design are suitable for installation in cars, buses, and other vehicles.



i-PRO mini

i-PRO mini provides powerful open AI technology in a compact format. It blends seamlessly into any surroundings and provides insights to solve a variety of problems. Extendable to marketing functions with third party AI apps.

i-PRO Product Selector

Overview

i-PRO releases Product Selector for both on Web and smartphone app. They are used to select the model by rich filters that meets your various needs from the i-PRO lineup of products.

Product Selector for Web

Product Selector for Web supports all categories of the i-PRO products. After selecting a product (camera or embedded recorder) that meets your requirements, you can easily select accessories needed for installation by simply setting the installation location by using the Accessory Selector.

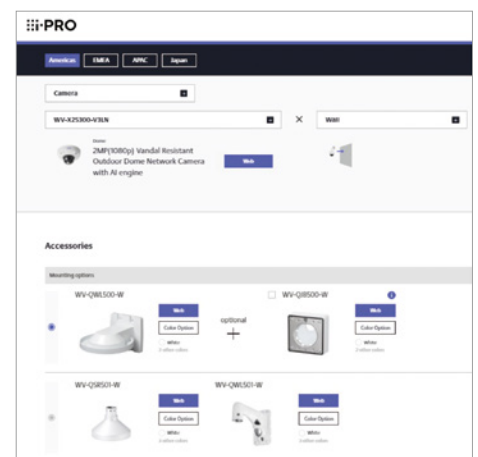
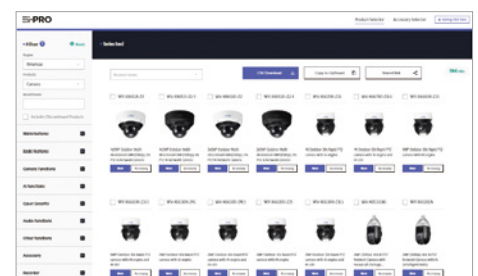
Accessory Selector also provides a function that judges AI extension software compatibility and shows conditions and remarks.



Product Selector for Smartphone

This application can be used to select a network camera that meets your needs and accessories. And anyone can easily perform tasks from camera selection to proposal creation.

<https://i-pro.com/selector/product/>



MULTI-SENSOR CAMERAS



MODEL#	WV-X86531-Z2 (Z2-1) WV-X86530-Z2 (Z2-1)	WV-S8574L (LG) WV-S8573L (LG)	WV-S8564L (LG) WV-S8563L (LG)	WV-S8544L (LG) WV-S8543L (LG)
Environmental Type	Outdoor	Outdoor	Outdoor	Outdoor
Resolution	PTZ: 2MP Multi: 5MP x4 WV-S86531 5MP x3 WV-S86530	8MP(4K) x4 WV-S8574L (LG) 8MP(4K) x3 WV-S8573L (LG)	6MP x4 WV-S8564L (LG) 6MP x3 WV-S8563L (LG)	4MP x4 WV-S8544L (LG) 4MP x3 WV-S8543L (LG)
Analytics (Max. # of AI apps installation)	Edge AI (6) / Auto tracking	Edge AI (4)	Edge AI (4)	Edge AI (4)
Sensor	PTZ: 1/2.8 CMOS Multi: 1/2.7 CMOS	1/2.8 CMOS	1/2.8 CMOS	1/2.7 CMOS
Focal length / F-number	PTZ: 4.0 to 84.6 mm, F1.6 Multi: 3.2 mm, F2.0	3.1 mm, F1.4	3.1 mm, F1.4	2.9 to 7.3mm, F2.0
Optical Zoom	PTZ: 21x, Motorized / Multi: -	—	—	2.5x, Motorized
Horizontal angle of view (16:9)	PTZ: 3.7° to 77° / Endless pan Multi: 97° / lens	108° / lens	108° / lens	43° to 100° / lens
Built-in IR-LED	—	40 m / 131 ft. 30 m / 99 ft. (LG)	40 m / 131 ft. 30 m / 99 ft. (LG)	20 m / 66 ft. 15 m / 49 ft. (LG)
Min. Illumination (Color / B&W)	PTZ: 0.011 lx / 0.006 lx Multi: 0.12 lx / 0.10 lx	0.084 lx / 0 lx 0.24 lx / 0 lx (LG)	0.084 lx / 0 lx 0.24 lx / 0 lx (LG)	0.21 lx / 0 lx 0.59 lx / 0 lx (LG)
WDR [Dynamic Range]	PTZ: Yes [144dB] Multi: Yes [108dB]	Yes [120dB]	Yes [120dB]	Yes [108dB]
Video Codec	H.265 Smart Coding	H.265 Smart Coding	H.265 Smart Coding	H.265 Smart Coding
Max. fps @Max. Resolution	PTZ: 60 fps Multi: 15 fps	15 fps	15 fps	30 fps
Audio (In / Out / Built-in MIC)	Yes [*2] / Yes [*2] / —	Yes [*2] / Yes [*2] / —	Yes [*2] / Yes [*2] / —	Yes [*2] / Yes [*2] / —
External I/O	Yes [*2]	Yes [*2]	Yes [*2]	Yes [*2]
SD Memory Card Slot	microSDXC	microSDXC	microSDXC	microSDXC
Weather / Vandal Resistant	IP67, IP66 / IK10	IP67, IP66 / IK10	IP67, IP66 / IK10	IP67, IP66 / IK10
Operating Temperature	-40 °C to +55 °C / -40 °F to +131 °F (60W PoE/24V AC)	-40 °C to +60 °C -40 °F to +140 °F	-40 °C to +60 °C -40 °F to +140 °F	-40 °C to +60 °C -40 °F to +140 °F
Power Source / Consumption	PoE++ 35.6W	PoE+ 25.4W	PoE+ 25.4W	PoE+ 25.4W
Other	FIPS 140-2 LV3 [*1], NEMA TS2, Black (Z2-1)	FIPS 140-2 LV3 [*1], NEMA TS2, Smoked dome (LG), Re-paintable	FIPS 140-2 LV3 [*1], NEMA TS2, Smoked dome (LG), Re-paintable	FIPS 140-2 LV3 [*1], NEMA TS2, Smoked dome (LG), Re-paintable
Bracket Chart	BRACKETS	BRACKETS	BRACKETS	BRACKETS

MULTI-SENSOR CAMERAS



MODEL#	WV-S8544 (G) WV-S8543 (G)	WV-S85702-F3L (F3L1)	WV-S85402-V2L (V2L1)	WV-U85402-V2L (V2L1)
Environmental Type	Outdoor	Outdoor	Outdoor	Outdoor
Resolution	4MP x4 WV-S8544 (G) 4MP x3 WV-S8543 (G)	8MP(4K) x2	4MP x2	4MP x2
Analytics (Max. # of AI apps installation)	Edge AI (4)	Edge AI (4)	Edge AI (4)	VMD
Sensor	1/2.7 CMOS	1/2.8 CMOS	1/2.7 CMOS	1/2.7 CMOS
Focal length / F-number	2.9 to 7.3mm, F2.0	3.1 mm, F1.4	2.9 to 7.3 mm, F2.0	2.9 to 7.3 mm, F2.0
Optical Zoom	2.5x, Motorized	—	2.5x, Motorized	2.5x, Motorized
Horizontal angle of view (16:9)	43° to 100° / lens	104° / lens	43° to 100° / lens	43° to 100° / lens
Built-in IR-LED	—	40 m / 131 ft.	40 m / 131 ft.	40 m / 131 ft.
Min. Illumination (Color / B&W)	0.21 lx / 0.12 lx 0.59 lx / 0.34 lx (G)	0.084 lx / 0 lx	0.21 lx / 0 lx	0.21 lx / 0 lx
WDR [Dynamic Range]	Yes [108dB]	Yes [120dB]	Yes [108dB]	Yes [108dB]
Video Codec	H.265 Smart Coding	H.265 Smart Coding	H.265 Smart Coding	H.265 Smart Coding
Max. fps @Max. Resolution	30 fps	15 fps	30 fps	30 fps
Audio (In / Out / Built-in MIC)	Yes [*2] / Yes [*2] / —	Yes [*2] / Yes [*2] / —	Yes [*2] / Yes [*2] / —	Yes [*2] / Yes [*2] / —
External I/O	Yes [*2]	Yes [*2]	Yes [*2]	Yes [*2]
SD Memory Card Slot	microSDXC	microSDXC	microSDXC	microSDXC
Weather / Vandal Resistant	IP67, IP66 / IK10	IP67, IP66 / IK10	IP67, IP66 / IK10	IP67, IP66 / IK10
Operating Temperature	-40 °C to +60 °C -40 °F to +140 °F	-40 °C to +60 °C -40 °F to +140 °F	-40 °C to +60 °C -40 °F to +140 °F	-40 °C to +60 °C -40 °F to +140 °F
Power Source / Consumption	PoE+ 17.3W	PoE+ 18.9W	PoE+ 22.2W	PoE+ 18.9W
Other	FIPS 140-2 LV3 [*1], NEMA TS2, Smoked dome (G), Re-paintable	FIPS 140-2 LV3 [*1], Black (F3L1)	FIPS 140-2 LV3 [*1], Black (V2L1)	FIPS 140-2 LV3 [*1], Black (V2L1)
Bracket Chart	BRACKETS	BRACKETS	BRACKETS	BRACKETS

[*1] FIPS-compliant secure element is embedded. [*2] Option cable WV-QCA501A is needed.

OUTDOOR PTZ CAMERAS



MODEL#	WV-X67711-Z3L3	WV-X67710-Z3-3 (Z3L3) WV-X67710-Z3-1 (Z3L1)	WV-X67701-Z3L3	WV-X67700-Z3-3 (Z3L3)
Environmental Type	Outdoor	Outdoor	Outdoor	Outdoor
Resolution	8MP(4K)	8MP(4K)	8MP(4K)	8MP(4K)
Analytics (Max. # of AI apps installation)	Edge AI (3) / Auto tracking	Edge AI (3) / Auto tracking	Edge AI (3) / Auto tracking	Edge AI (3) / Auto tracking
Sensor	1/2.8 CMOS	1/2.8 CMOS	1/2.8 CMOS	1/2.8 CMOS
Focal length / F-number	4.5 to 135 mm, F1.8	4.5 to 135 mm, F1.8	4.5 to 135 mm, F1.8	4.5 to 135 mm, F1.8
Optical Zoom	30x, Motorized	30x, Motorized	30x, Motorized	30x, Motorized
Horizontal angle of view (16:9)	2.5° to 62°	2.5° to 62°	2.5° to 62°	2.5° to 62°
Built-in IR-LED	160 m / 525 ft. *White LED Light	350 m / 1,148 ft. (Z3L3, Z3L1)	160 m / 525 ft. *White LED Light	350 m / 1,148 ft. (Z3L3)
Min. Illumination (Color / B&W)	0 lx / 0.1 lx	0.13 lx / 0.1 lx (Z3-3, Z3-1) 0.13 lx / 0 lx (Z3L3, Z3L1)	0 lx / 0.1 lx	0.13 lx / 0.1 lx (Z3-3) 0.13 lx / 0 lx (Z3L3)
WDR [Dynamic Range]	Yes [132dB]	Yes [132dB]	Yes [132dB]	Yes [132dB]
Video Codec	H.265 Smart Coding	H.265 Smart Coding	H.265 Smart Coding	H.265 Smart Coding
Max. fps @Max. Resolution	30 fps	30 fps	30 fps	30 fps
Audio (In / Out / Built-in MIC)	Yes [*2] / Yes [*2] / —	Yes [*2] / Yes [*2] / —	Yes [*2] / Yes [*2] / —	Yes [*2] / Yes [*2] / —
External I/O	Yes [*2]	Yes [*2]	Yes [*2]	Yes [*2]
SD Memory Card Slot	—	—	—	—
Weather / Vandal Resistant	IP68, IP66 / IK10	IP68, IP66 / IK10	IP68, IP66 / IK10	IP68, IP66 / IK10
Operating Temperature	-50 °C to +65 °C -58 °F to +149 °F	-50°C to +65°C, -58°F to +149°F (Z3-3, Z3L3) -50°C to +60°C, -58°F to +140°F (Z3-1, Z3L1)	-50 °C to +65 °C -58 °F to +149 °F	-50 °C to +65 °C -58 °F to +149 °F
Power Source / Consumption	PoE++ / 24V AC/DC 70W (PoE++ Class 8)	PoE++ / 24V AC/DC 65W (PoE++ Class 8) (Z3-3, Z3-1) PoE++ / 24V AC/DC 70W (PoE++ Class 8) (Z3L3, Z3L1)	PoE++ / 100-240V AC 70W (PoE++ Class 8)	PoE++ / 100-240V AC 65W (PoE++ Class 8) (Z3-3) PoE++ / 100-240V AC 70W (PoE++ Class 8) (Z3L3)
Other	FIPS 140-2 LV3 [*1], NEMA TS2, Salt resistant	FIPS 140-2 LV3 [*1], NEMA TS2, Salt resistant, Black (Z3-1, Z3L1)	FIPS 140-2 LV3 [*1], NEMA TS2, Salt resistant	FIPS 140-2 LV3 [*1], NEMA TS2, Salt resistant
Bracket Chart	BRACKETS	BRACKETS	BRACKETS	BRACKETS

OUTDOOR PTZ CAMERAS



MODEL#	WV-X67311-Z4L3	WV-X67310-Z4-3 (Z4L3) WV-X67310-Z4-1 (Z4L1)	WV-X67301-Z4L3	WV-X67300-Z4-3 (Z4L3)
Environmental Type	Outdoor	Outdoor	Outdoor	Outdoor
Resolution	2MP	2MP	2MP	2MP
Analytics (Max. # of AI apps installation)	Edge AI (2) / Auto tracking	Edge AI (2) / Auto tracking	Edge AI (2) / Auto tracking	Edge AI (2) / Auto tracking
Sensor	1/2.8 CMOS	1/2.8 CMOS	1/2.8 CMOS	1/2.8 CMOS
Focal length / F-number	4.25 to 170 mm, F1.6	4.25 to 170 mm, F1.6	4.25 to 170 mm, F1.6	4.25 to 170 mm, F1.6
Optical Zoom	40x, Motorized	40x, Motorized	40x, Motorized	40x, Motorized
Horizontal angle of view (16:9)	1.9° to 66°	1.9° to 66°	1.9° to 66°	1.9° to 66°
Built-in IR-LED	280 m / 918 ft. *White LED Light	560 m / 1,837 ft. (Z4L3, Z4L1)	280 m / 918 ft. *White LED Light	560 m / 1,837 ft. (Z4L3)
Min. Illumination (Color / B&W)	0 lx / 0.006 lx	0.011 lx / 0.006 lx (Z4-3, Z4-1) 0.011 lx / 0 lx (Z4L3, Z4L1)	0 lx / 0.006 lx	0.011 lx / 0.006 lx (Z4-3) 0.011 lx / 0 lx (Z4L3)
WDR [Dynamic Range]	Yes [144dB]	Yes [144dB]	Yes [144dB]	Yes [144dB]
Video Codec	H.265 Smart Coding	H.265 Smart Coding	H.265 Smart Coding	H.265 Smart Coding
Max. fps @Max. Resolution	60 fps	60 fps	60 fps	60 fps
Audio (In / Out / Built-in MIC)	Yes [*2] / Yes [*2] / —	Yes [*2] / Yes [*2] / —	Yes [*2] / Yes [*2] / —	Yes [*2] / Yes [*2] / —
External I/O	Yes [*2]	Yes [*2]	Yes [*2]	Yes [*2]
SD Memory Card Slot	—	—	—	—
Weather / Vandal Resistant	IP68, IP66 / IK10	IP68, IP66 / IK10	IP68, IP66 / IK10	IP68, IP66 / IK10
Operating Temperature	-50 °C to +65 °C -58 °F to +149 °F	-50°C to +65°C -58°F to +149°F (Z4-3, Z4L3) -50°C to +60°C -58°F to +140°F (Z4-1, Z4L1)	-50 °C to +65 °C -58 °F to +149 °F	-50 °C to +65 °C -58 °F to +149 °F
Power Source / Consumption	PoE++ / 24V AC/DC 70W (PoE++ Class 8)	PoE++ / 24V AC/DC 65W (PoE++ Class 8) (Z4-3, Z4-1) PoE++ / 24V AC/DC 70W (PoE++ Class 8) (Z4L3, Z4L1)	PoE++ / 100-240V AC 70W (PoE++ Class 8)	PoE++ / 100-240V AC 65W (PoE++ Class 8) (Z4-3) PoE++ / 100-240V AC 70W (PoE++ Class 8) (Z4L3)
Other	FIPS 140-2 LV3 [*1], NEMA TS2, Salt resistant	FIPS 140-2 LV3 [*1], NEMA TS2, Salt resistant, Black (Z4-1, Z4L1)	FIPS 140-2 LV3 [*1], NEMA TS2, Salt resistant	FIPS 140-2 LV3 [*1], NEMA TS2, Salt resistant
Bracket Chart	BRACKETS	BRACKETS	BRACKETS	BRACKETS

[*1] FIPS-compliant secure element is embedded. [*2] Option cable WV-QCA502 is needed.

OUTDOOR PTZ CAMERAS



MODEL#	WV-X66700-Z3LK (Z3LS) WV-S66700-Z3LN (Z3L)	WV-X66600-Z3LK (Z3LS) WV-S66600-Z3LN (Z3L)	WV-X66300-Z4LK (Z4LS) WV-S66300-Z4LN (Z4L)	WV-X66300-Z3LK (Z3LS) WV-S66300-Z3LN (Z3L)
Environmental Type	Outdoor	Outdoor	Outdoor	Outdoor
Resolution	8MP(4K)	6MP	2MP	2MP
Analytics (Max. # of AI apps installation)	Edge AI (3) / Auto tracking	Edge AI (3) / Auto tracking	Edge AI (2) / Auto tracking	Edge AI (2) / Auto tracking
Sensor	1/2.8 CMOS	1/2.8 CMOS	1/2.8 CMOS	1/2.8 CMOS
Focal length / F-number	4.5 to 135 mm, F1.8	4.5 to 135 mm, F1.8	4.25 to 170 mm, F1.6	4.25 to 136 mm, F1.6
Optical Zoom	30x, Motorized	30x, Motorized	40x, Motorized	32x, Motorized
Horizontal angle of view (16:9)	2.5° to 62° / Endless pan	2.5° to 62° / Endless pan	2.0° to 65° / Endless pan	2.4° to 65° / Endless pan
Built-in IR-LED	280 m / 920 ft.	280 m / 920 ft.	350 m / 1,148 ft.	350 m / 1,148 ft.
Min. Illumination (Color / B&W)	0.13 lx / 0 lx	0.13 lx / 0 lx	0.011 lx / 0 lx	0.011 lx / 0 lx
WDR [Dynamic Range]	Yes [132dB]	Yes [132dB]	Yes [144dB]	Yes [144dB]
Video Codec	H.265 Smart Coding	H.265 Smart Coding	H.265 Smart Coding	H.265 Smart Coding
Max. fps @Max. Resolution	30 fps	30 fps	60 fps	60 fps
Audio (In / Out / Built-in MIC)	Yes [*2] / Yes [*2] / —	Yes [*2] / Yes [*2] / —	Yes [*2] / Yes [*2] / —	Yes [*2] / Yes [*2] / —
External I/O	Yes [*2]	Yes [*2]	Yes [*2]	Yes [*2]
SD Memory Card Slot	microSDXC	microSDXC	microSDXC	microSDXC
Weather / Vandal Resistant	IP66 / IK10	IP66 / IK10	IP66 / IK10	IP66 / IK10
Operating Temperature	-50 °C to +60 °C -58 °F to +140 °F	-50 °C to +60 °C -58 °F to +140 °F	-50 °C to +60 °C -58 °F to +140 °F (PoE++)	-50 °C to +60 °C -58 °F to +140 °F (PoE++)
Power Source / Consumption	PoE++ 45.9W	PoE++ 45.9W	45.9W (PoE++) 25.4W (PoE+)	45.9W (PoE++) 25.4W (PoE+)
Other	FIPS 140-2 LV3 [*1], NEMA TS2, ClearSight (Z3LK, Z3LN), Salt resistant (X-series), Re-paintable	FIPS 140-2 LV3 [*1], NEMA TS2, ClearSight (Z3LK, Z3LN), Salt resistant (X-series), Re-paintable	FIPS 140-2 LV3 [*1], NEMA TS2, ClearSight (Z4LK, Z4LN), Salt resistant (X-series), Re-paintable	FIPS 140-2 LV3 [*1], NEMA TS2, ClearSight (Z3LK, Z3LN), Salt resistant (X-series), Re-paintable
Bracket Chart	BRACKETS	BRACKETS	BRACKETS	BRACKETS

OUTDOOR PTZ CAMERAS



MODEL#	WV-X66700-Z3K (Z3S) WV-S66700-Z3N (Z3)	WV-X66600-Z3K (Z3S) WV-S66600-Z3N (Z3)	WV-X66300-Z4K (Z4S) WV-S66300-Z4N (Z4)	WV-X66300-Z3K (Z3S) WV-S66300-Z3N (Z3)
Environmental Type	Outdoor	Outdoor	Outdoor	Outdoor
Resolution	8MP(4K)	6MP	2MP	2MP
Analytics (Max. # of AI apps installation)	Edge AI (3) / Auto tracking	Edge AI (3) / Auto tracking	Edge AI (2) / Auto tracking	Edge AI (2) / Auto tracking
Sensor	1/2.8 CMOS	1/2.8 CMOS	1/2.8 CMOS	1/2.8 CMOS
Focal length / F-number	4.5 to 135 mm, F1.8	4.5 to 135 mm, F1.8	4.25 to 170 mm, F1.6	4.25 to 136 mm, F1.6
Optical Zoom	30x, Motorized	30x, Motorized	40x, Motorized	32x, Motorized
Horizontal angle of view (16:9)	2.5° to 62° / Endless pan	2.5° to 62° / Endless pan	2.0° to 65° / Endless pan	2.4° to 65° / Endless pan
Built-in IR-LED	—	—	—	—
Min. Illumination (Color / B&W)	0.13 lx / 0.1 lx	0.13 lx / 0.1 lx	0.011 lx / 0.006 lx	0.011 lx / 0.006 lx
WDR [Dynamic Range]	Yes [132dB]	Yes [132dB]	Yes [144dB]	Yes [144dB]
Video Codec	H.265 Smart Coding	H.265 Smart Coding	H.265 Smart Coding	H.265 Smart Coding
Max. fps @Max. Resolution	30 fps	30 fps	60 fps	60 fps
Audio (In / Out / Built-in MIC)	Yes [*2] / Yes [*2] / —	Yes [*2] / Yes [*2] / —	Yes [*2] / Yes [*2] / —	Yes [*2] / Yes [*2] / —
External I/O	Yes [*2]	Yes [*2]	Yes [*2]	Yes [*2]
SD Memory Card Slot	microSDXC	microSDXC	microSDXC	microSDXC
Weather / Vandal Resistant	IP66 / IK10	IP66 / IK10	IP66 / IK10	IP66 / IK10
Operating Temperature	-50 °C to +60 °C -58 °F to +140 °F	-50 °C to +60 °C -58 °F to +140 °F	-50 °C to +60 °C -58 °F to +140 °F (PoE++)	-50 °C to +60 °C -58 °F to +140 °F (PoE++)
Power Source / Consumption	PoE++ 37.8W	PoE++ 37.8W	37.8W (PoE++) 17.3W (PoE+)	37.8W (PoE++) 17.3W (PoE+)
Other	FIPS 140-2 LV3 [*1], NEMA TS2, ClearSight (Z3K, Z3N), Salt resistant (X-series), Re-paintable	FIPS 140-2 LV3 [*1], NEMA TS2, ClearSight (Z3K, Z3N), Salt resistant (X-series), Re-paintable	FIPS 140-2 LV3 [*1], NEMA TS2, ClearSight (Z4K, Z4N), Salt resistant (X-series), Re-paintable	FIPS 140-2 LV3 [*1], NEMA TS2, ClearSight (Z3K, Z3N), Salt resistant (X-series), Re-paintable
Bracket Chart	BRACKETS	BRACKETS	BRACKETS	BRACKETS

[*1] FIPS-compliant secure element is embedded. [*2] Option cable WV-QCA501A is needed.

OUTDOOR PTZ CAMERAS



MODEL#	WV-S65340-Z4 (Z4N) (Z4G) (Z4N1) (Z4K)	WV-S65340-Z2 (Z2N) (Z2G) (Z2N1) (Z2K)
Environmental Type	Outdoor	Outdoor
Resolution	2MP	2MP
Analytics (Max. # of AI apps installation)	Edge AI (2) / Auto tracking	Edge AI (2) / Auto tracking
Sensor	1/2.8 CMOS	1/2.8 CMOS
Focal length / F-number	4.25 to 170 mm, F1.6	4.0 to 84.6 mm, F1.6
Optical Zoom	40x, Motorized	21x, Motorized
Horizontal angle of view (16:9)	2.1° to 65° / Endless pan	3.7° to 77° / 0-350 Pan
Built-in IR-LED	—	—
Min. Illumination (Color / B&W)	0.011 lx / 0.006 lx 0.03 lx / 0.017 lx (Z4G)	0.011 lx / 0.006 lx 0.03 lx / 0.017 lx (Z2G)
WDR [Dynamic Range]	Yes [144dB]	Yes [144dB]
Video Codec	H.265 Smart Coding	H.265 Smart Coding
Max. fps @Max. Resolution	60 fps	60 fps
Audio (In / Out / Built-in MIC)	Yes / Yes / —	Yes / Yes / —
External I/O	Yes	Yes
SD Memory Card Slot	microSDXC	microSDXC
Weather / Vandal Resistant	IP67, IP66 / IK10	IP67, IP66 / IK10
Operating Temperature	-50 °C to +60 °C / -58 °F to +140 °F (PoE++/24V AC)	-50 °C to +60 °C / -58 °F to +140 °F (PoE++/24V AC)
Power Source / Consumption	PoE++, PoE+ / 24V AC 51W (PoE++)	PoE++, PoE+ / 24V AC 51W (PoE++)
Other	FIPS 140-2 LV3 [*1], NEMA TS2, ClearSight (Z4N, Z4N1, Z4K), Smoked dome (Z4G), Black (Z4N1), Salt resistant (Z4K), Re-paintable	FIPS 140-2 LV3 [*1], NEMA TS2, ClearSight (Z2N, Z2N1, Z2K), Smoked dome (Z2G), Black (Z2N1), Salt resistant (Z2K), Re-paintable
Bracket Chart	BRACKETS	BRACKETS

OUTDOOR PTZ CAMERAS



MODEL#	WV-S65501-Z1 (Z1G)	WV-S65302-Z2 (Z2G) (Z2-1)	WV-S65301-Z1 (Z1G) (Z1-1) (Z1S)	WV-S65300-ZY (ZYG)
Environmental Type	Outdoor	Outdoor	Outdoor	Outdoor
Resolution	5MP	2MP	2MP	2MP
Analytics (Max. # of AI apps installation)	Edge AI (3) / Auto tracking	Edge AI (2) / Auto tracking	Edge AI (2) / Auto tracking	Edge AI (2) / Auto tracking
Sensor	1/2.8 CMOS	1/2.8 CMOS	1/2.8 CMOS	1/2.8 CMOS
Focal length / F-number	4.7 to 47.0 mm, F1.6	4.0 to 84.6 mm, F1.6	4.7 to 47.0 mm, F1.6	2.9 to 9 mm, F1.3
Optical Zoom	10x, Motorized	21x, Motorized	10x, Motorized	3.1x, Motorized
Horizontal angle of view (16:9)	6.2° to 58° / Endless pan	3.7° to 77° / Endless pan	6.7° to 62° / Endless pan	36° to 113° / 0-350 pan
Built-in IR-LED	—	—	—	—
Min. Illumination (Color / B&W)	0.08 lx / 0.06 lx 0.22 lx / 0.18 lx (Z1G)	0.011 lx / 0.006 lx 0.03 lx / 0.017 lx (Z2G)	0.011 lx / 0.006 lx 0.03 lx / 0.017 lx (Z1G)	0.007 lx / 0.004 lx 0.02 lx / 0.012 lx (ZYG)
WDR [Dynamic Range]	Yes [132dB]	Yes [144dB]	Yes [144dB]	Yes [144dB]
Video Codec	H.265 Smart Coding	H.265 Smart Coding	H.265 Smart Coding	H.265 Smart Coding
Max. fps @Max. Resolution	30 fps	60 fps	60 fps	60 fps
Audio (In / Out / Built-in MIC)	Yes / Yes [*2] / —	Yes / Yes [*2] / —	Yes / Yes [*2] / —	Yes / Yes [*2] / —
External I/O	Yes [*2]	Yes [*2]	Yes [*2]	Yes [*2]
SD Memory Card Slot	microSDXC	microSDXC	microSDXC	microSDXC
Weather / Vandal Resistant	IP66 / IK10	IP66 / IK10	IP66 / IK10	IP66 / IK10
Operating Temperature	-30 °C to +55 °C -22 °F to +131 °F	-30 °C to +55 °C -22 °F to +131 °F	-30 °C to +55 °C -22 °F to +131 °F	-30 °C to +55 °C -22 °F to +131 °F
Power Source / Consumption	PoE+ / 12V DC [*2] 18.4W (PoE+)	PoE+ / 12V DC [*2] 18.4W (PoE+)	PoE+ / 12V DC [*2] 18.4W (PoE+)	PoE / 12V DC [*2] 12W (PoE)
Other	FIPS 140-2 LV3 [*1], NEMA TS2, Smoked dome (Z1G), Re-paintable	FIPS 140-2 LV3 [*1], NEMA TS2, Smoked dome (Z2G), Black (Z2-1), Re-paintable	FIPS 140-2 LV3 [*1], NEMA TS2, Smoked dome (Z1G), Black (Z1-1), Salt resistant (Z1S), Re-paintable	FIPS 140-2 LV3 [*1], NEMA TS2, Smoked dome (ZYG), Re-paintable
Bracket Chart	BRACKETS	BRACKETS	BRACKETS	BRACKETS

[*1] FIPS-compliant secure element is embedded. [*2] Option cable WV-QCA501A is needed.

OUTDOOR PTZ CAMERAS



MODEL#	WV-U65302-Z2 (Z2G)	WV-U65301-Z1 (Z1G)	WV-U65300-ZY (ZYG)
Environmental Type	Outdoor	Outdoor	Outdoor
Resolution	2MP	2MP	2MP
Analytics (Max. # of AI apps installation)	VMD	VMD	VMD
Sensor	1/2.8 CMOS	1/2.8 CMOS	1/2.8 CMOS
Focal length / F-number	4.0 to 84.6 mm, F1.6	4.7 to 47.0 mm, F1.6	2.9 to 9 mm, F1.3
Optical Zoom	21x, Motorized	10x, Motorized	3.1x, Motorized
Horizontal angle of view (16:9)	3.7° to 77° / Endless pan	6.7° to 62° / Endless pan	36° to 113° / 0-350 pan
Built-in IR-LED	—	—	—
Min. Illumination (Color / B&W)	0.011 lx / 0.006 lx 0.03 lx / 0.017 lx (Z2G)	0.011 lx / 0.006 lx 0.03 lx / 0.017 lx (Z1G)	0.007 lx / 0.004 lx 0.02 lx / 0.012 lx (ZYG)
WDR [Dynamic Range]	Yes [144dB]	Yes [144dB]	Yes [144dB]
Video Codec	H.265 Smart Coding	H.265 Smart Coding	H.265 Smart Coding
Max. fps @Max. Resolution	60 fps	60 fps	60 fps
Audio (In / Out / Built-in MIC)	Yes / Yes [*2] / —	Yes / Yes [*2] / —	Yes / Yes [*2] / —
External I/O	Yes [*2]	Yes [*2]	Yes [*2]
SD Memory Card Slot	microSDXC	microSDXC	microSDXC
Weather / Vandal Resistant	IP66 / IK10	IP66 / IK10	IP66 / IK10
Operating Temperature	-30 °C to +55 °C -22 °F to +131 °F	-30 °C to +55 °C -22 °F to +131 °F	-30 °C to +55 °C -22 °F to +131 °F
Power Source / Consumption	PoE+ / 12V DC [*2] 18.4W (PoE+)	PoE+ / 12V DC [*2] 18.4W (PoE+)	PoE / 12V DC [*2] 12W (PoE)
Other	FIPS 140-2 LV3 [*1], NEMA TS2, Smoked dome (Z2G), Re-paintable	FIPS 140-2 LV3 [*1], NEMA TS2, Smoked dome (Z1G), Re-paintable	FIPS 140-2 LV3 [*1], NEMA TS2, Smoked dome (ZYG), Re-paintable
Bracket Chart	BRACKETS	BRACKETS	BRACKETS

INDOOR PTZ CAMERAS



MODEL#	WV-S61702-Z3	WV-S61602-Z3	WV-S61302-Z4	WV-S61501-Z1	WV-S61301-Z2 WV-U61301-Z2
Environmental Type	Indoor	Indoor	Indoor	Indoor	Indoor
Resolution	8MP (4K)	6MP	2MP	5MP	2MP
Analytics (Max. # of AI apps installation)	Edge AI (3)	Edge AI (3)	Edge AI (2) / Auto tracking	Edge AI (3) / Auto tracking	Edge AI (2) / Auto tracking (S-series), VMD(U-series)
Sensor	1/2.8 CMOS	1/2.8 CMOS	1/2.8 CMOS	1/2.8 CMOS	1/2.8 CMOS
Focal length / F-number	4.5 to 135 mm, F1.8	4.5 to 135 mm, F1.8	4.25 to 170 mm, F1.6	4.7 to 47.0 mm, F1.6	4.0 to 84.6 mm, F1.6
Optical Zoom	30x, Motorized	30x, Motorized	40x, Motorized	10x, Motorized	21x, Motorized
Horizontal angle of view (16:9)	2.5° to 62° / 0-350 pan	2.5° to 62° / 0-350 pan	1.9° to 66° / Endless pan	6.2° to 58° / 0-350 pan	3.7° to 77° / 0-350 Pan
Built-in IR-LED	—	—	—	—	—
Min. Illumination (Color / B&W)	0.13 lx / 0.1 lx	0.13 lx / 0.1 lx	0.011 lx / 0.006 lx	0.08 lx / 0.06 lx	0.011 lx / 0.006 lx
WDR [Dynamic Range]	Yes [132dB]	Yes [132dB]	Yes [144dB]	Yes [132dB]	Yes [144dB]
Video Codec	H.265 Smart Coding	H.265 Smart Coding	H.265 Smart Coding	H.265 Smart Coding	H.265 Smart Coding
Max. fps @Max. Resolution	30 fps	30 fps	60 fps	30 fps	60 fps
Audio (In / Out / Built-in MIC)	Yes / Yes / —	Yes / Yes / —	Yes / Yes / —	Yes / Yes / —	Yes / Yes / —
External I/O	Yes	Yes	Yes	Yes	Yes
SD Memory Card Slot	microSDXC	microSDXC	microSDXC	microSDXC	microSDXC
Weather / Vandal Resistant	— / —	— / —	— / —	— / —	— / —
Operating Temperature	-10 °C to +50 °C +14 °F to +122 °F	-10 °C to +50 °C +14 °F to +122 °F	-10 °C to +50 °C +14 °F to +122 °F	-10 °C to +50 °C +14 °F to +122 °F	-10 °C to +50 °C +14 °F to +122 °F
Power Source / Consumption	PoE+ / 12V DC 16.7W (PoE+)	PoE+ / 12V DC 16.7W (PoE+)	PoE / 12V DC 12.95W (PoE)	PoE / 12V DC 12.95W (PoE)	PoE / 12V DC 12.95W (PoE)
Other	FIPS 140-2 LV3 [*1]	FIPS 140-2 LV3 [*1]	FIPS 140-2 LV3 [*1]	FIPS 140-2 LV3 [*1]	FIPS 140-2 LV3 [*1]
Bracket Chart	BRACKETS	BRACKETS	BRACKETS	BRACKETS	BRACKETS

[*1] FIPS-compliant secure element is embedded. [*2] Option cable WV-QCA501A is needed.

INDOOR PTZ CAMERAS



MODEL#	WV-S61301-Z1	WV-S61300-ZY (ZYG)	WV-U61301-Z1	WV-U61300-ZY (ZYG)
Environmental Type	Indoor	Indoor	Indoor	Indoor
Resolution	2MP	2MP	2MP	2MP
Analytics (Max. # of AI apps installation)	Edge AI (2) / Auto tracking	Edge AI (2) / Auto tracking	VMD	VMD
Sensor	1/2.8 CMOS	1/2.8 CMOS	1/2.8 CMOS	1/2.8 CMOS
Focal length / F-number	4.7 to 47.0 mm, F1.6	2.9 to 9 mm, F1.3	4.7 to 47.0 mm, F1.6	2.9 to 9 mm, F1.3
Optical Zoom	10x, Motorized	3.1x, Motorized	10x, Motorized	3.1x, Motorized
Horizontal angle of view (16:9)	6.7° to 62° / 0-350 pan	36° to 115° / 0-350 pan	6.7° to 62° / 0-350 pan	36° to 115° / 0-350 pan
Built-in IR-LED	—	—	—	—
Min. Illumination (Color / B&W)	0.011 lx / 0.006 lx	0.007 lx / 0.004 lx 0.02 lx / 0.012 lx (ZYG)	0.011 lx / 0.006 lx	0.007 lx / 0.004 lx 0.02 lx / 0.012 lx (ZYG)
WDR [Dynamic Range]	Yes [144dB]	Yes [144dB]	Yes [144dB]	Yes [144dB]
Video Codec	H.265 Smart Coding	H.265 Smart Coding	H.265 Smart Coding	H.265 Smart Coding
Max. fps @Max. Resolution	60 fps	60 fps	60 fps	60 fps
Audio (In / Out / Built-in MIC)	Yes / Yes / —	Yes / Yes / —	Yes / Yes / —	Yes / Yes / —
External I/O	Yes	Yes	Yes	Yes
SD Memory Card Slot	microSDXC	microSDXC	microSDXC	microSDXC
Weather / Vandal Resistant	— / —	— / —	— / —	— / —
Operating Temperature	-10 °C to +50 °C +14 °F to +122 °F	-10 °C to +50 °C +14 °F to +122 °F	-10 °C to +50 °C +14 °F to +122 °F	-10 °C to +50 °C +14 °F to +122 °F
Power Source / Consumption	PoE / 12V DC 12.95W (PoE)	PoE / 12V DC 12W (PoE)	PoE / 12V DC 12.95W (PoE)	PoE / 12V DC 12W (PoE)
Other	FIPS 140-2 LV3 [*1]	FIPS 140-2 LV3 [*1], Smoked dome (ZYG)	FIPS 140-2 LV3 [*1]	FIPS 140-2 LV3 [*1], Smoked dome (ZYG)
Bracket Chart	BRACKETS	BRACKETS	BRACKETS	BRACKETS

OUTDOOR DOME CAMERAS



MODEL#	WV-X25580-F2LN2	WV-X25700-V2LN	WV-X25600-V2LN	WV-X25500-V3LN	WV-X25300-V3LN
Environmental Type	Outdoor	Outdoor	Outdoor	Outdoor	Outdoor
Resolution	5MP	8MP(4K)	6MP	5MP	2MP
Analytics (Max. # of AI apps installation)	Edge AI (3)	Edge AI (9) / AI relay / On-site learning	Edge AI (9) / AI relay / On-site learning	Edge AI (9) / AI relay / On-site learning	Edge AI (9) / AI relay / On-site learning
Sensor	1/2.8 CMOS	1/1.8 CMOS	1/1.8 CMOS	1/2.8 CMOS	1/2.8 CMOS
Focal length / F-number	2.3 mm, F2.2	4.3 to 8.6 mm, F1.5	4.3 to 8.6 mm, F1.5	2.9 to 9 mm, F1.3	2.9 to 9 mm, F1.3
Optical Zoom	—	2x, Motorized	2x, Motorized	3.1x, Motorized	3.1x, Motorized
Horizontal angle of view (16:9)	131°	52° to 101°	52° to 101°	33° to 103°	36° to 113°
Built-in IR-LED	21 m / 69 ft.	70 m / 230 ft.	70 m / 230 ft.	70 m / 230 ft.	70 m / 230 ft.
Min. Illumination (Color / B&W)	0.08 lx / 0 lx	0.04 lx / 0 lx	0.04 lx / 0 lx	0.03 lx / 0 lx	0.007 lx / 0 lx
WDR [Dynamic Range]	Yes [132dB]	Yes [132dB]	Yes [132dB]	Yes [132dB]	Yes [144dB]
Video Codec	H.265 Smart Coding	H.265 Smart Coding	H.265 Smart Coding	H.265 Smart Coding	H.265 Smart Coding
Max. fps @Max. Resolution	30 fps	60 fps	60 fps	60 fps	60 fps
Audio (In / Out / Built-in MIC)	Yes [*2] / Yes [*2] / Yes	Yes [*2] / Yes [*2] / —	Yes [*2] / Yes [*2] / —	Yes [*2] / Yes [*2] / —	Yes [*2] / Yes [*2] / —
External I/O	Yes [*2]	Yes [*2]	Yes [*2]	Yes [*2]	Yes [*2]
SD Memory Card Slot	microSDXC	microSDXC	microSDXC	microSDXC	microSDXC
Weather / Vandal Resistant	IP69, IP67, IP66 / IK11, 70J IP6K9K	IP67, IP66 / IK10, 50J	IP67, IP66 / IK10, 50J	IP67, IP66 / IK10, 50J	IP67, IP66 / IK10, 50J
Operating Temperature	-40 °C to +55 °C -40 °F to +131 °F	-40 °C to +55 °C -40 °F to +131 °F	-40 °C to +55 °C -40 °F to +131 °F	-40 °C to +55 °C -40 °F to +131 °F	-40 °C to +55 °C -40 °F to +131 °F
Power Source / Consumption	PoE / 12V DC 11.5W (PoE)	PoE+ / 12V DC [*2] 14.0W (PoE+)	PoE+ / 12V DC [*2] 14.0W (PoE+)	PoE+ / 12V DC [*2] 14.0W (PoE+)	PoE+ / 12V DC [*2] 14.0W (PoE+)
Other	FIPS 140-2 LV3 [*1], ClearSight	FIPS 140-2 LV3 [*1], ClearSight, Re-paintable	FIPS 140-2 LV3 [*1], ClearSight, Re-paintable	FIPS 140-2 LV3 [*1], ClearSight, Re-paintable	FIPS 140-2 LV3 [*1], ClearSight, Re-paintable
Bracket Chart	BRACKETS	BRACKETS	BRACKETS	BRACKETS	BRACKETS

[*1] FIPS-compliant secure element is embedded. [*2] Option cable WV-QCA501A is needed.

OUTDOOR DOME CAMERAS



MODEL#	WV-S25700-V2L (V2LN) (V2LG) (V2LN1)	WV-S25600-V2L (V2LN) (V2LG)	WV-S25500-V3L (V3LN) (V3LG) (V3LN1)
Environmental Type	Outdoor	Outdoor	Outdoor
Resolution	8MP(4K)	6MP	5MP
Analytics (Max. # of AI apps installation)	Edge AI (3)	Edge AI (3)	Edge AI (3)
Sensor	1/1.8 CMOS	1/1.8 CMOS	1/2.8 CMOS
Focal length / F-number	4.3 to 8.6 mm, F1.5	4.3 to 8.6 mm, F1.5	2.9 to 9 mm, F1.3
Optical Zoom	2x, Motorized	2x, Motorized	3.1x, Motorized
Horizontal angle of view (16:9)	52° to 101°	52° to 101°	33° to 103°
Built-in IR-LED	70 m / 230 ft. 45 m / 148 ft. (V2LG)	70 m / 230 ft. 45 m / 148 ft. (V2LG)	55 m / 180 ft. 35 m / 115 ft. (V3LG)
Min. Illumination (Color / B&W)	0.04 lx / 0 lx 0.12 lx / 0 lx (V2LG)	0.04 lx / 0 lx 0.12 lx / 0 lx (V2LG)	0.05 lx / 0 lx 0.15 lx / 0 lx (V3LG)
WDR [Dynamic Range]	Yes [132dB]	Yes [132dB]	Yes [132dB]
Video Codec	H.265 Smart Coding	H.265 Smart Coding	H.265 Smart Coding
Max. fps @Max. Resolution	30 fps	30 fps	30 fps
Audio (In / Out / Built-in MIC)	Yes [*2] / Yes [*2] / —	Yes [*2] / Yes [*2] / —	Yes [*2] / Yes [*2] / —
External I/O	Yes [*2]	Yes [*2]	Yes [*2]
SD Memory Card Slot	microSDXC	microSDXC	microSDXC
Weather / Vandal Resistant	IP66 / IK10, 50J	IP66 / IK10, 50J	IP66 / IK10, 50J
Operating Temperature	-40 °C to +60 °C -40 °F to +140 °F	-40 °C to +60 °C -40 °F to +140 °F	-40 °C to +60 °C -40 °F to +140 °F
Power Source / Consumption	PoE / 12V DC [*2] 11.5W (PoE)	PoE / 12V DC [*2] 11.5W (PoE)	PoE / 12V DC [*2] 11.5W (PoE)
Other	FIPS 140-2 LV3 [*1], ClearSight (V2LN) (V2LN1), Smoked dome (V2LG), Black (V2LN1), Re-paintable	FIPS 140-2 LV3 [*1], ClearSight (V2LN), Smoked dome (V2LG), Re-paintable	FIPS 140-2 LV3 [*1], ClearSight (V3LN) (V3LN1), Smoked dome (V3LG), Black (V3LN1), Re-paintable
Bracket Chart	BRACKETS	BRACKETS	BRACKETS

OUTDOOR DOME CAMERAS



MODEL#	WV-S25500-F6L	WV-S25500-F3L	WV-S2536LA (LNA) (LGA) (LGNA)
Environmental Type	Outdoor	Outdoor	Outdoor
Resolution	5MP	5MP	2MP
Analytics (Max. # of AI apps installation)	Edge AI (3)	Edge AI (3)	Edge AI (2)
Sensor	1/2.8 CMOS	1/2.8 CMOS	1/2.8 CMOS
Focal length / F-number	6.1 mm, F1.6	3.2 mm, F2.0	2.9 to 9 mm, F1.3
Optical Zoom	—	—	3.1x, Motorized
Horizontal angle of view (16:9)	48°	95°	36° to 113°
Built-in IR-LED	45 m / 148 ft.	35 m / 115 ft.	70 m / 230 ft. 50 m / 164 ft. (LGA, LGNA)
Min. Illumination (Color / B&W)	0.08 lx / 0 lx	0.12 lx / 0 lx	0.007 lx / 0 lx 0.018 lx / 0 lx (LGA)(LGNA)
WDR [Dynamic Range]	Yes [132dB]	Yes [132dB]	Yes [144dB]
Video Codec	H.265 Smart Coding	H.265 Smart Coding	H.265 Smart Coding
Max. fps @Max. Resolution	30 fps	30 fps	60 fps
Audio (In / Out / Built-in MIC)	Yes [*2] / Yes [*2] / —	Yes [*2] / Yes [*2] / —	Yes [*2] / Yes [*2] / —
External I/O	Yes [*2]	Yes [*2]	Yes [*2]
SD Memory Card Slot	microSDXC	microSDXC	microSDXC
Weather / Vandal Resistant	IP66 / IK10, 50J	IP66 / IK10, 50J	IP66 / IK10, 50J
Operating Temperature	-40 °C to +60 °C -40 °F to +140 °F	-40 °C to +60 °C -40 °F to +140 °F	-40 °C to +60 °C -40 °F to +140 °F
Power Source / Consumption	PoE / 12V DC [*2] 10.6W (PoE)	PoE / 12V DC [*2] 10.6W (PoE)	PoE / 12V DC [*2] 9.1W (PoE)
Other	FIPS 140-2 LV3 [*1], Re-paintable	FIPS 140-2 LV3 [*1], Re-paintable	FIPS 140-2 LV3 [*1], ClearSight (LNA) (LGNA), Smoked dome (LGA) (LGNA), Re-paintable
Bracket Chart	BRACKETS	BRACKETS	BRACKETS

[*1] FIPS-compliant secure element is embedded. [*2] Option cable WV-QCA501A is needed.

OUTDOOR DOME CAMERAS



MODEL#	WV-U25751-V3L	WV-U25551-V3L	WV-U25502-V3L	WV-U25550-F3L	WV-U25501-F3L
Environmental Type	Outdoor	Outdoor	Outdoor	Outdoor	Outdoor
Resolution	8MP(4K)	5MP	5MP	5MP	5MP
Analytics (Max. # of AI apps installation)	AI-VMD	AI-VMD	i-VMD	AI-VMD	i-VMD
Sensor	1/2.8 CMOS	1/2.8 CMOS	1/2.8 CMOS	1/2.8 CMOS	1/2.8 CMOS
Focal length / F-number	3.2 to 10.2 mm, F1.6	3.2 to 10.2 mm, F1.6	3.2 to 10.2 mm, F1.6	3.2 mm, F2.0	3.2 mm, F2.0
Optical Zoom	3.2x, Motorized	3.2x, Motorized	3.2x, Motorized	—	—
Horizontal angle of view (16:9)	30° to 110°	28° to 99°	28° to 99°	96°	96°
Built-in IR-LED	28 m / 92 ft.	28 m / 92 ft.	28 m / 92 ft.	28 m / 92 ft.	28 m / 92 ft.
Min. Illumination (Color / B&W)	0.2 lx / 0 lx	0.07 lx / 0 lx	0.07 lx / 0 lx	0.11 lx / 0 lx	0.11 lx / 0 lx
WDR [Dynamic Range]	Yes [120dB]	Yes [120dB]	Yes [120dB]	Yes [120dB]	Yes [120dB]
Video Codec	H.265 Smart Coding	H.265 Smart Coding	H.265 Smart Coding	H.265 Smart Coding	H.265 Smart Coding
Max. fps @Max. Resolution	15 fps	30 fps	30 fps	30 fps	30 fps
Audio (In / Out / Built-in MIC)	Yes [*2] / Yes [*2] / —	Yes [*2] / Yes [*2] / —	— / — / —	Yes [*3] / Yes [*3] / —	— / — / —
External I/O	—	—	—	—	—
SD Memory Card Slot	microSDXC	microSDXC	microSDXC	microSDXC	microSDXC
Weather / Vandal Resistant	IP66 / IK10	IP66 / IK10	IP66 / IK10	IP66 / IK10	IP66 / IK10
Operating Temperature	-30 °C to +50 °C -22 °F to +122 °F	-30 °C to +50 °C -22 °F to +122 °F	-30 °C to +50 °C -22 °F to +122 °F	-30 °C to +50 °C -22 °F to +122 °F	-30 °C to +50 °C -22 °F to +122 °F
Power Source / Consumption	PoE 9.6W	PoE 9.6W	PoE 9.6W	PoE 9.6W	PoE 9.6W
Other	FIPS 140-3 LV3 [*1], Re-paintable	FIPS 140-3 LV3 [*1], Re-paintable	FIPS 140-3 LV3 [*1], Re-paintable	FIPS 140-3 LV3 [*1], Re-paintable	FIPS 140-3 LV3 [*1], Re-paintable
Bracket Chart	BRACKETS	BRACKETS	BRACKETS	BRACKETS	BRACKETS

OUTDOOR DOME CAMERAS



MODEL#	WV-U2542LA	WV-U2540LA	WV-U25351-V3L	WV-U25302-V3L
Environmental Type	Outdoor	Outdoor	Outdoor	Outdoor
Resolution	4MP	4MP	2MP	2MP
Analytics (Max. # of AI apps installation)	VMD	VMD	AI-VMD	i-VMD
Sensor	1/2.7 CMOS	1/2.7 CMOS	1/2.8 CMOS	1/2.8 CMOS
Focal length / F-number	2.9 to 7.3 mm, F2.0	3.2 mm, F2.0	3.2 to 10.2 mm, F1.6	3.2 to 10.2 mm, F1.6
Optical Zoom	2.5x, Motorized	—	3.2x, Motorized	3.2x, Motorized
Horizontal angle of view (16:9)	43° to 100°	100°	30° to 110°	30° to 110°
Built-in IR-LED	20 m / 65 ft.	20 m / 65 ft.	42 m / 138 ft.	42 m / 138 ft.
Min. Illumination (Color / B&W)	0.21 lx / 0 lx	0.21 lx / 0 lx	0.05 lx / 0 lx	0.05 lx / 0 lx
WDR [Dynamic Range]	Yes [102dB]	Yes [102dB]	Yes [120dB]	Yes [120dB]
Video Codec	H.265 Smart Coding	H.265 Smart Coding	H.265 Smart Coding	H.265 Smart Coding
Max. fps @Max. Resolution	30 fps	30 fps	30 fps	30 fps
Audio (In / Out / Built-in MIC)	— / — / —	— / — / —	Yes [*2] / Yes [*2] / —	— / — / —
External I/O	—	—	—	—
SD Memory Card Slot	microSDXC	microSDXC	microSDXC	microSDXC
Weather / Vandal Resistant	IP66 / IK10	IP66 / IK10	IP66 / IK10	IP66 / IK10
Operating Temperature	-30 °C to +50 °C -22 °F to +122 °F	-30 °C to +50 °C -22 °F to +122 °F	-30 °C to +50 °C -22 °F to +122 °F	-30 °C to +50 °C -22 °F to +122 °F
Power Source / Consumption	PoE 7.2W	PoE 5.3W	PoE 9.6W	PoE 9.6W
Other	—	—	FIPS 140-3 LV3 [*1], Re-paintable	FIPS 140-3 LV3 [*1], Re-paintable
Bracket Chart	BRACKETS	BRACKETS	BRACKETS	BRACKETS

[*1] FIPS-compliant secure element is embedded. [*2] Option cable WV-QCA501A is needed. [*3] Option cable WV-QCA504 is needed.

OUTDOOR DOME CAMERAS



MODEL#	WV-U25350-F3L	WV-U25301-F3L	WV-U2532LA	WV-U2530LA
Environmental Type	Outdoor	Outdoor	Outdoor	Outdoor
Resolution	2MP	2MP	2MP	2MP
Analytics (Max. # of AI apps installation)	AI-VMD	i-VMD	VMD	VMD
Sensor	1/2.8 CMOS	1/2.8 CMOS	1/3 CMOS	1/3 CMOS
Focal length / F-number	3.2 mm, F2.0	3.2 mm, F2.0	2.9 to 7.3 mm, F2.0	3.2 mm, F2.0
Optical Zoom	—	—	2.5x, Motorized	—
Horizontal angle of view (16:9)	105°	105°	42° to 97°	97°
Built-in IR-LED	42 m / 138 ft.	42 m / 138 ft.	30 m / 98 ft.	30 m / 98 ft.
Min. Illumination (Color / B&W)	0.07 lx / 0 lx	0.07 lx / 0 lx	0.07 lx / 0 lx	0.07 lx / 0 lx
WDR [Dynamic Range]	Yes [120dB]	Yes [120dB]	Yes [120dB]	Yes [120dB]
Video Codec	H.265 Smart Coding	H.265 Smart Coding	H.265 Smart Coding	H.265 Smart Coding
Max. fps @Max. Resolution	30 fps	30 fps	30 fps	30 fps
Audio (In / Out / Built-in MIC)	Yes [*2] / Yes [*2] / —	— / — / —	— / — / —	— / — / —
External I/O	—	—	—	—
SD Memory Card Slot	microSDXC	microSDXC	microSDXC	microSDXC
Weather / Vandal Resistant	IP66 / IK10	IP66 / IK10	IP66 / IK10	IP66 / IK10
Operating Temperature	-30 °C to +50 °C -22 °F to +122 °F	-30 °C to +50 °C -22 °F to +122 °F	-30 °C to +50 °C -22 °F to +122 °F	-30 °C to +50 °C -22 °F to +122 °F
Power Source / Consumption	PoE 9.6W	PoE 9.6W	PoE 6.7W	PoE 4.8W
Other	FIPS 140-3 LV3 [*1], Re-paintable	FIPS 140-3 LV3 [*1], Re-paintable	—	—
Bracket Chart	BRACKETS	BRACKETS	BRACKETS	BRACKETS

INDOOR VANDAL DOME CAMERAS



MODEL#	WV-X22700-V2L	WV-X22600-V2L	WV-X22500-V3L	WV-X22300-V3L
Environmental Type	Indoor Vandal	Indoor Vandal	Indoor Vandal	Indoor Vandal
Resolution	8MP(4K)	6MP	5MP	2MP
Analytics (Max. # of AI apps installation)	Edge AI (9) / AI relay / On-site learning	Edge AI (9) / AI relay / On-site learning	Edge AI (9) / AI relay / On-site learning	Edge AI (9) / AI relay / On-site learning
Sensor	1/1.8 CMOS	1/1.8 CMOS	1/2.8 CMOS	1/2.8 CMOS
Focal length / F-number	4.3 to 8.6 mm, F1.5	4.3 to 8.6 mm, F1.5	2.9 to 9 mm, F1.3	2.9 to 9 mm, F1.3
Optical Zoom	2x, Motorized	2x, Motorized	3.1x, Motorized	3.1x, Motorized
Horizontal angle of view (16:9)	52° to 101°	52° to 101°	33° to 105°	36° to 114°
Built-in IR-LED	70 m / 230 ft.	70 m / 230 ft.	70 m / 230 ft.	70 m / 230 ft.
Min. Illumination (Color / B&W)	0.04 lx / 0 lx	0.04 lx / 0 lx	0.03 lx / 0 lx	0.007 lx / 0 lx
WDR [Dynamic Range]	Yes [132dB]	Yes [132dB]	Yes [132dB]	Yes [144dB]
Video Codec	H.265 Smart Coding	H.265 Smart Coding	H.265 Smart Coding	H.265 Smart Coding
Max. fps @Max. Resolution	60 fps	60 fps	60 fps	60 fps
Audio (In / Out / Built-in MIC)	Yes / Yes / —	Yes / Yes / —	Yes / Yes / —	Yes / Yes / —
External I/O	Yes	Yes	Yes	Yes
SD Memory Card Slot	microSDXC	microSDXC	microSDXC	microSDXC
Weather / Vandal Resistant	— / IK10	— / IK10	— / IK10	— / IK10
Operating Temperature	-10 °C to +50 °C +14 °F to +122 °F	-10 °C to +50 °C +14 °F to +122 °F	-10 °C to +50 °C +14 °F to +122 °F	-10 °C to +50 °C +14 °F to +122 °F
Power Source / Consumption	PoE+ / 12V DC 14.0W (PoE+)	PoE+ / 12V DC 14.0W (PoE+)	PoE+ / 12V DC 14.0W (PoE+)	PoE+ / 12V DC 14.0W (PoE+)
Other	FIPS 140-2 LV3 [*1], Re-paintable	FIPS 140-2 LV3 [*1], Re-paintable	FIPS 140-2 LV3 [*1], Re-paintable	FIPS 140-2 LV3 [*1], Re-paintable
Bracket Chart	BRACKETS	BRACKETS	BRACKETS	BRACKETS

[*1] FIPS-compliant secure element is embedded. [*2] Option cable WV-QCA504 is needed.

INDOOR VANDAL DOME CAMERAS



MODEL#	WV-S22700-V2L (V2LG) (V2L1)	WV-S22600-V2L (V2LG)	WV-S22500-V3L (V3LG) (V3L1)	WV-S22500-F6L	WV-S22500-F3L	WV-S2236LA (LGA)(LA-B)(LGA-B)
Environmental Type	Indoor Vandal	Indoor Vandal	Indoor Vandal	Indoor Vandal	Indoor Vandal	Indoor Vandal
Resolution	8MP(4K)	6MP	5MP	5MP	5MP	2MP
Analytics (Max. # of AI apps installation)	Edge AI (3)	Edge AI (3)	Edge AI (3)	Edge AI (3)	Edge AI (3)	Edge AI (2)
Sensor	1/1.8 CMOS	1/1.8 CMOS	1/2.8 CMOS	1/2.8 CMOS	1/2.8 CMOS	1/2.8 CMOS
Focal length / F-number	4.3 to 8.6 mm, F1.5	4.3 to 8.6 mm, F1.5	2.9 to 9 mm, F1.3	6.1 mm, F1.6	3.2 mm, F2.0	2.9 to 9 mm, F1.3
Optical Zoom	2x, Motorized	2x, Motorized	3.1x, Motorized	—	—	3.1x, Motorized
Horizontal angle of view (16:9)	52° to 101°	52° to 101°	33° to 105°	48°	95°	36° to 114°
Built-in IR-LED	50 m / 164 ft. 35 m / 115 ft. (V2LG)	50 m / 164 ft. 35 m / 115 ft. (V2LG)	40 m / 131 ft. 25 m / 82 ft. (V3LG)	35 m / 115 ft.	25 m / 82 ft.	70 m / 230 ft. 50 m / 164 ft. (LGA, LGA-B)
Min. Illumination (Color / B&W)	0.04 lx / 0 lx 0.12 lx / 0 lx (V2LG)	0.04 lx / 0 lx 0.12 lx / 0 lx (V2LG)	0.05 lx / 0 lx 0.15 lx / 0 lx (V3LG)	0.08 lx / 0 lx	0.12 lx / 0 lx	0.007 lx / 0 lx 0.018 lx / 0 lx (LGA)(LGA-B)
WDR [Dynamic Range]	Yes [132dB]	Yes [132dB]	Yes [132dB]	Yes [132dB]	Yes [132dB]	Yes [144dB]
Video Codec	H.265 Smart Coding	H.265 Smart Coding	H.265 Smart Coding	H.265 Smart Coding	H.265 Smart Coding	H.265 Smart Coding
Max. fps @Max. Resolution	30 fps	30 fps	30 fps	30 fps	30 fps	60 fps
Audio (In / Out / Built-in MIC)	Yes / Yes / —	Yes / Yes / —	Yes / Yes / —	Yes / Yes / —	Yes / Yes / —	Yes / Yes / —
External I/O	Yes	Yes	Yes	Yes	Yes	Yes
SD Memory Card Slot	microSDXC	microSDXC	microSDXC	microSDXC	microSDXC	microSDXC
Weather / Vandal Resistant	— / IK10	— / IK10	— / IK10	— / IK10	— / IK10	— / IK10
Operating Temperature	-10 °C to +50 °C +14 °F to +122 °F	-10 °C to +50 °C +14 °F to +122 °F	-10 °C to +50 °C +14 °F to +122 °F	-10 °C to +50 °C +14 °F to +122 °F	-10 °C to +50 °C +14 °F to +122 °F	-10 °C to +50 °C +14 °F to +122 °F
Power Source / Consumption	PoE / 12V DC 11.5W (PoE)	PoE / 12V DC 11.5W (PoE)	PoE / 12V DC 11.5W (PoE)	PoE / 12V DC 10.6W (PoE)	PoE / 12V DC 10.6W (PoE)	PoE / 12V DC 8.7W (PoE)
Other	FIPS 140-2 LV3 [*1], Smoked dome (V2LG), Black (V2L1), Re-paintable	FIPS 140-2 LV3 [*1], Smoked dome (V2LG), Re-paintable	FIPS 140-2 LV3 [*1], Smoked dome (V3LG), Black (V3L1), Re-paintable	FIPS 140-2 LV3 [*1], Re-paintable	FIPS 140-2 LV3 [*1], Re-paintable	FIPS 140-2 LV3 [*1], Smoked dome (LGA) (LGA-B), Black (LA-B) (LGA-B), Re-paintable
Bracket Chart	BRACKETS	BRACKETS	BRACKETS	BRACKETS	BRACKETS	BRACKETS

INDOOR VANDAL DOME CAMERAS



MODEL#	WV-U22750-F3L	WV-U22550-F3L	WV-U22501-F3L	WV-U22350-F3L	WV-U22301-F3L
Environmental Type	Indoor Vandal	Indoor Vandal	Indoor Vandal	Indoor Vandal	Indoor Vandal
Resolution	8MP(4K)	5MP	5MP	2MP	2MP
Analytics (Max. # of AI apps installation)	AI-VMD	AI-VMD	i-VMD	AI-VMD	i-VMD
Sensor	1/2.8 CMOS	1/2.8 CMOS	1/2.8 CMOS	1/2.8 CMOS	1/2.8 CMOS
Focal length / F-number	3.2 mm, F2.0	3.2 mm, F2.0	3.2 mm, F2.0	3.2 mm, F2.0	3.2 mm, F2.0
Optical Zoom	—	—	—	—	—
Horizontal angle of view (16:9)	105°	96°	96°	105°	105°
Built-in IR-LED	28 m / 92 ft.	28 m / 92 ft.	28 m / 92 ft.	42 m / 138 ft.	42 m / 138 ft.
Min. Illumination (Color / B&W)	0.31 lx / 0 lx	0.11 lx / 0 lx	0.11 lx / 0 lx	0.07 lx / 0 lx	0.07 lx / 0 lx
WDR [Dynamic Range]	Yes [120dB]	Yes [120dB]	Yes [120dB]	Yes [120dB]	Yes [120dB]
Video Codec	H.265 Smart Coding	H.265 Smart Coding	H.265 Smart Coding	H.265 Smart Coding	H.265 Smart Coding
Max. fps @Max. Resolution	15 fps	30 fps	30 fps	30 fps	30 fps
Audio (In / Out / Built-in MIC)	Yes [*2] / Yes [*2] / —	Yes [*2] / Yes [*2] / —	— / — / Yes	Yes [*2] / Yes [*2] / —	— / — / Yes
External I/O	—	—	—	—	—
SD Memory Card Slot	microSDXC	microSDXC	microSDXC	microSDXC	microSDXC
Weather / Vandal Resistant	IP42 / IK10	IP42 / IK10	IP42 / IK10	IP42 / IK10	IP42 / IK10
Operating Temperature	-10 °C to +50 °C +14 °F to +122 °F	-10 °C to +50 °C +14 °F to +122 °F	-10 °C to +50 °C +14 °F to +122 °F	-10 °C to +50 °C +14 °F to +122 °F	-10 °C to +50 °C +14 °F to +122 °F
Power Source / Consumption	PoE 9.6W	PoE 9.6W	PoE 9.6W	PoE 9.6W	PoE 9.6W
Other	FIPS 140-3 LV3 [*1], Re-paintable	FIPS 140-3 LV3 [*1], Re-paintable	FIPS 140-3 LV3 [*1], Re-paintable	FIPS 140-3 LV3 [*1], Re-paintable	FIPS 140-3 LV3 [*1], Re-paintable
Bracket Chart	BRACKETS	BRACKETS	BRACKETS	BRACKETS	BRACKETS

[*1] FIPS-compliant secure element is embedded. [*2] Option cable WV-QCA504 is needed.

INDOOR DOME CAMERAS



MODEL#	WV-S2136LA (LGA) (LA-B) (LGA-B)	WV-S2136A (-B) (GA) (GA-B)	WV-U21550-V3L	WV-U21501-V3L	WV-U2142LA	WV-U2140LA
Environmental Type	Indoor	Indoor	Indoor	Indoor	Indoor	Indoor
Resolution	2MP	2MP	5MP	5MP	4MP	4MP
Analytics (Max. # of AI apps installation)	Edge AI (2)	Edge AI (2)	AI-VMD	i-VMD	VMD	VMD
Sensor	1/2.8 CMOS	1/2.8 CMOS	1/2.8 CMOS	1/2.8 CMOS	1/2.7 CMOS	1/2.7 CMOS
Focal length / F-number	2.9 to 9 mm, F1.3	2.9 to 9 mm, F1.3	3.2 to 10.2 mm, F1.6	3.2 to 10.2 mm, F1.6	2.9 to 7.3 mm, F2.0	3.2 mm, F2.0
Optical Zoom	3.1x, Motorized	3.1x, Motorized	3.2x, Motorized	3.2x, Motorized	2.5x, Motorized	—
Horizontal angle of view (16:9)	36° to 115°	36° to 115°	28° to 101°	28° to 101°	44° to 102°	100°
Built-in IR-LED	70 m / 230 ft. 50 m / 164 ft. (LGA, LGA-B)	—	28 m / 92 ft.	28 m / 92 ft.	20 m / 65 ft.	20 m / 65 ft.
Min. Illumination (Color / B&W)	0.007 lx / 0 lx 0.018 lx / 0 lx (LGA) (LGA-B)	0.007 lx / 0.006 lx 0.018 lx / 0.017 lx (GA) (GA-B)	0.07 lx / 0 lx	0.07 lx / 0 lx	0.21 lx / 0 lx	0.21 lx / 0 lx
WDR [Dynamic Range]	Yes [144dB]	Yes [144dB]	Yes [120dB]	Yes [120dB]	Yes [102dB]	Yes [102dB]
Video Codec	H.265 Smart Coding	H.265 Smart Coding	H.265 Smart Coding	H.265 Smart Coding	H.265 Smart Coding	H.265 Smart Coding
Max. fps @Max. Resolution	60 fps	60 fps	30 fps	30 fps	30 fps	30 fps
Audio (In / Out / Built-in MIC)	Yes / Yes / —	Yes / Yes / —	Yes / Yes / —	— / Yes / Yes	— / — / —	— / — / —
External I/O	Yes	Yes	—	—	—	—
SD Memory Card Slot	microSDXC	microSDXC	microSDXC	microSDXC	microSDXC	microSDXC
Weather / Vandal Resistant	— / —	— / —	IP42 / —	IP42 / —	— / —	— / —
Operating Temperature	-10 °C to +50 °C +14 °F to +122 °F	-10 °C to +50 °C +14 °F to +122 °F	-10 °C to +50 °C +14 °F to +122 °F	-10 °C to +50 °C +14 °F to +122 °F	-10 °C to +50 °C +14 °F to +122 °F	-10 °C to +50 °C +14 °F to +122 °F
Power Source / Consumption	PoE / 12V DC 8.7W (PoE)	PoE / 12V DC 8.7W (PoE)	PoE 9.6W	PoE 9.6W	PoE 6.5W	PoE 5.3W
Other	FIPS 140-2 LV3 [*1], Smoked dome (LGA) (LGA-B), Black (LA-B) (LGA-B)	FIPS 140-2 LV3 [*1], Smoked dome (GA) (GA-B), Black (-B) (GA-B)	FIPS 140-3 LV3 [*1], Re-paintable	FIPS 140-3 LV3 [*1], HDMI output, Re-paintable	—	—
Bracket Chart	BRACKETS	BRACKETS	BRACKETS	BRACKETS	BRACKETS	BRACKETS

INDOOR DOME CAMERAS



MODEL#	WV-U21350-V3L	WV-U21301-V3L	WV-U21300-V2L	WV-U2132LA	WV-U2130LA
Environmental Type	Indoor	Indoor	Indoor	Indoor	Indoor
Resolution	2MP	2MP	2MP	2MP	2MP
Analytics (Max. # of AI apps installation)	AI-VMD	i-VMD	VMD	VMD	VMD
Sensor	1/2.8 CMOS	1/2.8 CMOS	1/2.8 CMOS	1/3 CMOS	1/3 CMOS
Focal length / F-number	3.2 to 10.2 mm, F1.6	3.2 to 10.2 mm, F1.6	2.9 to 7.3 mm, F2.0	2.9 to 7.3 mm, F2.0	3.2 mm, F2.0
Optical Zoom	3.2x, Motorized	3.2x, Motorized	2.5x, Motorized	2.5x, Motorized	—
Horizontal angle of view (16:9)	30° to 112°	30° to 112°	42° to 97°	42° to 97°	97°
Built-in IR-LED	42 m / 138 ft.	42 m / 138 ft.	40 m / 131 ft.	40 m / 131 ft.	30 m / 98 ft.
Min. Illumination (Color / B&W)	0.05 lx / 0 lx	0.05 lx / 0 lx	0.07 lx / 0 lx	0.07 lx / 0 lx	0.07 lx / 0 lx
WDR [Dynamic Range]	Yes [120dB]	Yes [120dB]	Yes [120dB]	Yes [120dB]	Yes [120dB]
Video Codec	H.265 Smart Coding	H.265 Smart Coding	H.265 Smart Coding	H.265 Smart Coding	H.265 Smart Coding
Max. fps @Max. Resolution	30 fps	30 fps	30 fps	30 fps	30 fps
Audio (In / Out / Built-in MIC)	Yes / Yes / —	— / — / Yes	— / — / Yes	— / — / —	— / — / —
External I/O	—	—	—	—	—
SD Memory Card Slot	microSDXC	microSDXC	microSDXC	microSDXC	microSDXC
Weather / Vandal Resistant	IP42 / —	IP42 / —	— / —	— / —	— / —
Operating Temperature	-10 °C to +50 °C +14 °F to +122 °F	-10 °C to +50 °C +14 °F to +122 °F	-10 °C to +50 °C +14 °F to +122 °F	-10 °C to +50 °C +14 °F to +122 °F	-10 °C to +50 °C +14 °F to +122 °F
Power Source / Consumption	PoE 9.6W	PoE 9.6W	PoE 5.8W	PoE 5.8W	PoE 4.8W
Other	FIPS 140-3 LV3 [*1], Re-paintable	FIPS 140-3 LV3 [*1], Re-paintable	—	—	—
Bracket Chart	BRACKETS	BRACKETS	BRACKETS	BRACKETS	BRACKETS

[*1] FIPS-compliant secure element is embedded.

BULLET CAMERAS



MODEL#	WV-X15701-Z3L (Z3LN)	WV-X15700-V2L (V2LN)	WV-X15600-V2L (V2LN)	WV-X15502-Z1L (Z1LN)	WV-X15501-Z3L (Z3LN)
Environmental Type	Outdoor	Outdoor	Outdoor	Outdoor	Outdoor
Resolution	8MP(4K)	8MP(4K)	6MP	5MP	5MP
Analytics (Max. # of AI apps installation)	Edge AI (9) / AI relay / On-site learning	Edge AI (9) / AI relay / On-site learning	Edge AI (9) / AI relay / On-site learning	Edge AI (9) / AI relay / On-site learning	Edge AI (9) / AI relay / On-site learning
Sensor	1/2.8 CMOS	1/1.8 CMOS	1/1.8 CMOS	1/2.8 CMOS	1/2.8 CMOS
Focal length / F-number	4.5 to 135 mm, F1.8	4.3 to 8.6 mm, F1.5	4.3 to 8.6 mm, F1.5	4.7 to 47 mm, F1.6	4.5 to 135 mm, F1.8
Optical Zoom	30x, Motorized	2x, Motorized	2x, Motorized	10x, Motorized	30x, Motorized
Horizontal angle of view (16:9)	2.5° to 62°	53° to 104°	53° to 104°	6.1° to 58°	2.3° to 58°
Built-in IR-LED	140 m / 459 ft. (PoE++)	70 m / 230 ft.	70 m / 230 ft.	180 m / 591 ft. (PoE++)	180 m / 591 ft. (PoE++)
Min. Illumination (Color / B&W)	0.13 lx / 0 lx	0.04 lx / 0 lx	0.04 lx / 0 lx	0.04 lx / 0 lx	0.06 lx / 0 lx
WDR [Dynamic Range]	Yes [132dB]	Yes [132dB]	Yes [132dB]	Yes [132dB]	Yes [132dB]
Video Codec	H.265 Smart Coding	H.265 Smart Coding	H.265 Smart Coding	H.265 Smart Coding	H.265 Smart Coding
Max. fps @Max. Resolution	60 fps	60 fps	60 fps	60 fps	60 fps
Audio (In / Out / Built-in MIC)	Yes [*2] / Yes [*2] / —	Yes [*2] / Yes [*2] / —	Yes [*2] / Yes [*2] / —	Yes [*2] / Yes [*2] / —	Yes [*2] / Yes [*2] / —
External I/O	Yes [*2]	Yes [*2]	Yes [*2]	Yes [*2]	Yes [*2]
SD Memory Card Slot	microSDXC	microSDXC	microSDXC	microSDXC	microSDXC
Weather / Vandal Resistant	IP67, IP66 / IK10	IP67, IP66 / IK10	IP67, IP66 / IK10	IP67, IP66 / IK10	IP67, IP66 / IK10
Operating Temperature	-40 °C to +60 °C -40 °F to +140 °F (PoE++)	-40 °C to +55 °C -40 °F to +131 °F	-40 °C to +55 °C -40 °F to +131 °F	-40 °C to +60 °C -40 °F to +140 °F (PoE++)	-40 °C to +60 °C -40 °F to +140 °F (PoE++)
Power Source / Consumption	PoE++, PoE+ / 12V DC [*2] 32.4W (PoE++)	PoE+ / 12V DC [*2] 14.0W (PoE+)	PoE+ / 12V DC [*2] 14.0W (PoE+)	PoE++, PoE+ / 12V DC [*2] 32.4W (PoE++)	PoE++, PoE+ / 12V DC [*2] 32.4W (PoE++)
Other	FIPS 140-2 LV3 [*1], ClearSight (Z3LN)	FIPS 140-2 LV3 [*1], ClearSight (V2LN), Re-paintable	FIPS 140-2 LV3 [*1], ClearSight (V2LN), Re-paintable	FIPS 140-2 LV3 [*1], ClearSight (Z1LN), LPF for LPR	FIPS 140-2 LV3 [*1], ClearSight (Z3LN)
Bracket Chart	BRACKETS	BRACKETS	BRACKETS	BRACKETS	BRACKETS

BULLET CAMERAS



MODEL#	WV-X15501-Z1L (Z1LN)	WV-X15500-V3L (V3LN)	WV-X15302-Z1L (Z1LN)	WV-X15301-Z1L (Z1LN)	WV-X15300-V3L (V3LN)
Environmental Type	Outdoor	Outdoor	Outdoor	Outdoor	Outdoor
Resolution	5MP	5MP	2MP	2MP	2MP
Analytics (Max. # of AI apps installation)	Edge AI (9)	Edge AI (9) / AI relay / On-site learning	Edge AI (9)	Edge AI (9)	Edge AI (9) / AI relay / On-site learning
Sensor	1/2.8 CMOS	1/2.8 CMOS	1/2.8 CMOS	1/2.8 CMOS	1/2.8 CMOS
Focal length / F-number	4.7 to 47 mm, F1.6	2.9 to 9 mm, F1.3	4.7 to 47 mm, F1.6	4.7 to 47 mm, F1.6	2.9 to 9 mm, F1.3
Optical Zoom	10x, Motorized	3.1x, Motorized	10x, Motorized	10x, Motorized	3.1x, Motorized
Horizontal angle of view (16:9)	6.1° to 58°	34° to 106°	6.6° to 62°	6.6° to 62°	37° to 117°
Built-in IR-LED	180 m / 591 ft. (PoE++)	70 m / 230 ft.	250 m / 820 ft. (PoE++)	250 m / 820 ft. (PoE++)	70 m / 230 ft.
Min. Illumination (Color / B&W)	0.04 lx / 0 lx	0.03 lx / 0 lx	0.011 lx / 0 lx	0.011 lx / 0 lx	0.007 lx / 0 lx
WDR [Dynamic Range]	Yes [132dB]	Yes [132dB]	Yes [144dB]	Yes [144dB]	Yes [144dB]
Video Codec	H.265 Smart Coding	H.265 Smart Coding	H.265 Smart Coding	H.265 Smart Coding	H.265 Smart Coding
Max. fps @Max. Resolution	60 fps	60 fps	60 fps	60 fps	60 fps
Audio (In / Out / Built-in MIC)	Yes [*2] / Yes [*2] / —	Yes [*2] / Yes [*2] / —	Yes [*2] / Yes [*2] / —	Yes [*2] / Yes [*2] / —	Yes [*2] / Yes [*2] / —
External I/O	Yes [*2]	Yes [*2]	Yes [*2]	Yes [*2]	Yes [*2]
SD Memory Card Slot	microSDXC	microSDXC	microSDXC	microSDXC	microSDXC
Weather / Vandal Resistant	IP67, IP66 / IK10	IP67, IP66 / IK10	IP67, IP66 / IK10	IP67, IP66 / IK10	IP67, IP66 / IK10
Operating Temperature	-40 °C to +60 °C -40 °F to +140 °F (PoE++)	-40 °C to +55 °C -40 °F to +131 °F	-40 °C to +60 °C -40 °F to +140 °F (PoE++)	-40 °C to +60 °C -40 °F to +140 °F (PoE++)	-40 °C to +55 °C -40 °F to +131 °F
Power Source / Consumption	PoE++, PoE+ / 12V DC [*2] 32.4W (PoE++)	PoE+ / 12V DC [*2] 14.0W (PoE+)	PoE++, PoE+ / 12V DC [*2] 32.4W (PoE++)	PoE++, PoE+ / 12V DC [*2] 32.4W (PoE++)	PoE+ / 12V DC [*2] 14.0W (PoE+)
Other	FIPS 140-2 LV3 [*1], ClearSight (Z1LN)	FIPS 140-2 LV3 [*1], ClearSight (V3LN), Re-paintable	FIPS 140-2 LV3 [*1], ClearSight (Z1LN), LPF for LPR	FIPS 140-2 LV3 [*1], ClearSight (Z1LN)	FIPS 140-2 LV3 [*1], ClearSight (V3LN), Re-paintable
Bracket Chart	BRACKETS	BRACKETS	BRACKETS	BRACKETS	BRACKETS

[*1] FIPS-compliant secure element is embedded. [*2] Option cable WV-QCA501A is needed.

BULLET CAMERAS



MODEL#	WV-S15701-Z3L (Z3LN)	WV-S15700-V2L (V2LN) (V2LK)	WV-S15600-V2L (V2LN)	WV-S15501-Z3L (Z3LN)	WV-S15501-Z1L (Z1LN)
Environmental Type	Outdoor	Outdoor	Outdoor	Outdoor	Outdoor
Resolution	8MP(4K)	8MP(4K)	6MP	5MP	5MP
Analytics (Max. # of AI apps installation)	Edge AI (3)	Edge AI (3)	Edge AI (3)	Edge AI (3)	Edge AI (3)
Sensor	1/2.8 CMOS	1/1.8 CMOS	1/1.8 CMOS	1/2.8 CMOS	1/2.8 CMOS
Focal length / F-number	4.5 to 135 mm, F1.8	4.3 to 8.6 mm, F1.5	4.3 to 8.6 mm, F1.5	4.5 to 135 mm, F1.8	4.7 to 47 mm, F1.6
Optical Zoom	30x, Motorized	2x, Motorized	2x, Motorized	30x, Motorized	10x, Motorized
Horizontal angle of view (16:9)	2.5° to 62°	53° to 104°	53° to 104°	2.3° to 58°	6.1° to 58°
Built-in IR-LED	140 m / 459 ft. (PoE++)	70 m / 230 ft.	70 m / 230 ft.	180 m / 591 ft. (PoE++)	180 m / 591 ft. (PoE++)
Min. Illumination (Color / B&W)	0.13 lx / 0 lx	0.04 lx / 0 lx 0.04 lx / 0.03 lx (V2LK)	0.04 lx / 0 lx	0.06 lx / 0 lx	0.04 lx / 0 lx
WDR [Dynamic Range]	Yes [132dB]	Yes [132dB]	Yes [132dB]	Yes [132dB]	Yes [132dB]
Video Codec	H.265 Smart Coding	H.265 Smart Coding	H.265 Smart Coding	H.265 Smart Coding	H.265 Smart Coding
Max. fps @Max. Resolution	30 fps	30 fps	30 fps	30 fps	30 fps
Audio (In / Out / Built-in MIC)	Yes [*2] / Yes [*2] / —	Yes [*2] / Yes [*2] / —	Yes [*2] / Yes [*2] / —	Yes [*2] / Yes [*2] / —	Yes [*2] / Yes [*2] / —
External I/O	Yes [*2]	Yes [*2]	Yes [*2]	Yes [*2]	Yes [*2]
SD Memory Card Slot	microSDXC	microSDXC	microSDXC	microSDXC	microSDXC
Weather / Vandal Resistant	IP67, IP66 / IK10	IP66 / IK10	IP66 / IK10	IP67, IP66 / IK10	IP67, IP66 / IK10
Operating Temperature	-40 °C to +60 °C -40 °F to +140 °F (PoE++)	-40 °C to +60 °C -40 °F to +140 °F	-40 °C to +60 °C -40 °F to +140 °F	-40 °C to +60 °C -40 °F to +140 °F (PoE++)	-40 °C to +60 °C -40 °F to +140 °F (PoE++)
Power Source / Consumption	PoE++, PoE+ / 12V DC [*2] 32.4W (PoE++)	PoE / 12V DC [*2] 11.5W (PoE)	PoE / 12V DC [*2] 11.5W (PoE)	PoE++, PoE+ / 12V DC [*2] 32.4W (PoE++)	PoE++, PoE+ / 12V DC [*2] 32.4W (PoE++)
Other	FIPS 140-2 LV3 [*1], ClearSight (Z3LN)	FIPS 140-2 LV3 [*1], ClearSight (V2LN) (V2LK), Re-paintable, Salt resistant (V2LK)	FIPS 140-2 LV3 [*1], ClearSight (V2LN), Re-paintable	FIPS 140-2 LV3 [*1], ClearSight (Z3LN)	FIPS 140-2 LV3 [*1], ClearSight (Z1LN)
Bracket Chart	BRACKETS	BRACKETS	BRACKETS	BRACKETS	BRACKETS

BULLET CAMERAS



MODEL#	WV-S15500-V3L (V3LN)(V3LN1)(V3LK)	WV-S15500-F6L	WV-S15500-F3L	WV-S15301-Z1L (Z1LN)	WV-S1536LA(LA-B) (LNA)(LNA-B)(LNSA)
Environmental Type	Outdoor	Outdoor	Outdoor	Outdoor	Outdoor
Resolution	5MP	5MP	5MP	2MP	2MP
Analytics (Max. # of AI apps installation)	Edge AI (3)	Edge AI (3)	Edge AI (3)	Edge AI (3)	Edge AI (2)
Sensor	1/2.8 CMOS	1/2.8 CMOS	1/2.8 CMOS	1/2.8 CMOS	1/2.8 CMOS
Focal length / F-number	2.9 to 9 mm, F1.3	6.1 mm, F1.6	3.2 mm, F2.0	4.7 to 47 mm, F1.6	2.9 to 9 mm, F1.3
Optical Zoom	3.1x, Motorized	—	—	10x, Motorized	3.1x, Motorized
Horizontal angle of view (16:9)	34° to 106°	49°	98°	6.6° to 62°	37° to 117°
Built-in IR-LED	55 m / 180 ft.	45 m / 148 ft.	35 m / 115 ft.	250 m / 820 ft. (PoE++)	70 m / 230 ft.
Min. Illumination (Color / B&W)	0.05 lx / 0 lx	0.08 lx / 0 lx	0.12 lx / 0 lx	0.011 lx / 0 lx	0.007 lx / 0 lx
WDR [Dynamic Range]	Yes [132dB]	Yes [132dB]	Yes [132dB]	Yes [144dB]	Yes [144dB]
Video Codec	H.265 Smart Coding	H.265 Smart Coding	H.265 Smart Coding	H.265 Smart Coding	H.265 Smart Coding
Max. fps @Max. Resolution	30 fps	30 fps	30 fps	60 fps	60 fps
Audio (In / Out / Built-in MIC)	Yes [*2] / Yes [*2] / —	Yes [*2] / Yes [*2] / —	Yes [*2] / Yes [*2] / —	Yes [*2] / Yes [*2] / —	Yes [*2] / Yes [*2] / —
External I/O	Yes [*2]	Yes [*2]	Yes [*2]	Yes [*2]	Yes [*2]
SD Memory Card Slot	microSDXC	microSDXC	microSDXC	microSDXC	microSDXC
Weather / Vandal Resistant	IP66 / IK10	IP66 / IK10	IP66 / IK10	IP67, IP66 / IK10	IP66 / IK10
Operating Temperature	-40 °C to +60 °C -40 °F to +140 °F	-40 °C to +60 °C -40 °F to +140 °F	-40 °C to +60 °C -40 °F to +140 °F	-40 °C to +60 °C -40 °F to +140 °F (PoE++)	-40 °C to +60 °C -40 °F to +140 °F
Power Source / Consumption	PoE / 12V DC [*2] 11.5W (PoE)	PoE / 12V DC [*2] 10.6W (PoE)	PoE / 12V DC [*2] 10.6W (PoE)	PoE++, PoE+ / 12V DC [*2] 32.4W (PoE++)	PoE / 12V DC [*2] 9.1W (PoE)
Other	FIPS 140-2 LV3 [*1], ClearSight (V3LN) (V3LN1) (V3LK), Black (V3LN1), Re-paintable, Salt resistant (V3LK)	FIPS 140-2 LV3 [*1], Re-paintable	FIPS 140-2 LV3 [*1], Re-paintable	FIPS 140-2 LV3 [*1], ClearSight (Z1LN)	FIPS 140-2 LV3 [*1], ClearSight (LNA) (LNA-B) (LNSA), Black (LA-B) (LNA-B), Re-paintable, Salt resistant (LNSA)
Bracket Chart	BRACKETS	BRACKETS	BRACKETS	BRACKETS	BRACKETS

[*1] FIPS-compliant secure element is embedded. [*2] Option cable WV-QCA501A is needed.

BULLET CAMERAS



MODEL#	WV-U15750-V3L	WV-U15550-V3L	WV-U15501-V3L	WV-U1542LA	WV-U15350-V3L	WV-U15301-V3L	WV-U1532LA
Environmental Type	Outdoor	Outdoor	Outdoor	Outdoor	Outdoor	Outdoor	Outdoor
Resolution	8MP(4K)	5MP	5MP	4MP	2MP	2MP	2MP
Analytics (Max. # of AI apps installation)	AI-VMD	AI-VMD	i-VMD	VMD	AI-VMD	i-VMD	VMD
Sensor	1/2.8 CMOS	1/2.8 CMOS	1/2.8 CMOS	1/2.7 CMOS	1/2.8 CMOS	1/2.8 CMOS	1/3 CMOS
Focal length / F-number	3.2 to 10.2 mm, F1.6	3.2 to 10.2 mm, F1.6	3.2 to 10.2 mm, F1.6	2.9 to 7.3 mm, F2.0	3.2 to 10.2 mm, F1.6	3.2 to 10.2 mm, F1.6	2.9 to 7.3 mm, F2.0
Optical Zoom	3.2x, Motorized	3.2x, Motorized	3.2x, Motorized	2.5x, Motorized	3.2x, Motorized	3.2x, Motorized	2.5x, Motorized
Horizontal angle of view (16:9)	31° to 114°	28° to 102°	28° to 102°	44° to 103°	31° to 114°	31° to 114°	43° to 100°
Built-in IR-LED	28 m / 92 ft.	28 m / 92 ft.	28 m / 92 ft.	20 m / 65 ft.	42 m / 138 ft.	42 m / 138 ft.	30 m / 98 ft.
Min. Illumination (Color / B&W)	0.2 lx / 0 lx	0.07 lx / 0 lx	0.07 lx / 0 lx	0.21 lx / 0 lx	0.05 lx / 0 lx	0.05 lx / 0 lx	0.07 lx / 0 lx
WDR [Dynamic Range]	Yes [120dB]	Yes [120dB]	Yes [120dB]	Yes [102dB]	Yes [120dB]	Yes [120dB]	Yes [120dB]
Video Codec	H.265 Smart Coding	H.265 Smart Coding	H.265 Smart Coding	H.265 Smart Coding	H.265 Smart Coding	H.265 Smart Coding	H.265 Smart Coding
Max. fps @Max. Resolution	15 fps	30 fps	30 fps	30 fps	30 fps	30 fps	30 fps
Audio (In / Out / Built-in MIC)	Yes / Yes / —	Yes / Yes / —	— / — / —	— / — / —	Yes / Yes / —	— / — / —	— / — / —
External I/O	—	—	—	—	—	—	—
SD Memory Card Slot	microSDXC	microSDXC	microSDXC	microSDXC	microSDXC	microSDXC	microSDXC
Weather / Vandal Resistant	IP66 / IK10	IP66 / IK10	IP66 / IK10	IP66 / IK10	IP66 / IK10	IP66 / IK10	IP66 / IK10
Operating Temperature	-30 °C to +50 °C -22 °F to +122 °F	-30 °C to +50 °C -22 °F to +122 °F	-30 °C to +50 °C -22 °F to +122 °F	-30 °C to +50 °C -22 °F to +122 °F	-30 °C to +50 °C -22 °F to +122 °F	-30 °C to +50 °C -22 °F to +122 °F	-30 °C to +50 °C -22 °F to +122 °F
Power Source / Consumption	PoE 9.6W	PoE 9.6W	PoE 9.6W	PoE 7.2W	PoE 9.6W	PoE 9.6W	PoE 6.7W
Other	FIPS 140-3 LV3 [*1], Re-paintable	FIPS 140-3 LV3 [*1], Re-paintable	FIPS 140-3 LV3 [*1], Re-paintable	—	FIPS 140-3 LV3 [*1], Re-paintable	FIPS 140-3 LV3 [*1], Re-paintable	—
Bracket Chart	BRACKETS	BRACKETS	BRACKETS	BRACKETS	BRACKETS	BRACKETS	BRACKETS

BOX CAMERAS



MODEL#	WV-S1136A	WV-U11550-V3	WV-U11501-V3	WV-U1142A	WV-U11350-V3
Environmental Type	Indoor	Indoor	Indoor	Indoor	Indoor
Resolution	2MP	5MP	5MP	4MP	2MP
Analytics (Max. # of AI apps installation)	Edge AI (2)	AI-VMD	i-VMD	VMD	AI-VMD
Sensor	1/2.8 CMOS	1/2.8 CMOS	1/2.8 CMOS	1/2.7 CMOS	1/2.8 CMOS
Focal length / F-number	CS Mount *Lens is not included	3.2 to 10.2 mm, F1.6	3.2 to 10.2 mm, F1.6	2.9 to 7.3 mm, F2.0	3.2 to 10.2 mm, F1.6
Optical Zoom	—	3.2x, Motorized	3.2x, Motorized	2.5x, Motorized	3.2x, Motorized
Horizontal angle of view (16:9)	—	28° to 102°	28° to 102°	44° to 103°	31° to 114°
Built-in IR-LED	—	—	—	—	—
Min. Illumination (Color / B&W)	0.006 lx / 0.004 lx @F1.2	0.07 lx / 0.04 lx	0.07 lx / 0.04 lx	0.21 lx / 0.12 lx	0.05 lx / 0.03 lx
WDR [Dynamic Range]	Yes [144dB]	Yes [120dB]	Yes [120dB]	Yes [102dB]	Yes [120dB]
Video Codec	H.265 Smart Coding	H.265 Smart Coding	H.265 Smart Coding	H.265 Smart Coding	H.265 Smart Coding
Max. fps @Max. Resolution	60 fps	30 fps	30 fps	30 fps	30 fps
Audio (In / Out / Built-in MIC)	Yes / Yes / —	Yes / Yes / —	— / — / Yes	— / — / —	Yes / Yes / —
External I/O	Yes	—	—	—	—
SD Memory Card Slot	microSDXC	microSDXC	microSDXC	microSDXC	microSDXC
Weather / Vandal Resistant	— / —	— / —	— / —	— / —	— / —
Operating Temperature	-10 °C to +50 °C +14 °F to +122 °F	-10 °C to +50 °C +14 °F to +122 °F	-10 °C to +50 °C +14 °F to +122 °F	-10 °C to +50 °C +14 °F to +122 °F	-10 °C to +50 °C +14 °F to +122 °F
Power Source / Consumption	PoE / 12V DC 6.3W (PoE)	PoE 6.7W	PoE 6.7W	PoE 4.8W	PoE 6.7W
Other	FIPS 140-2 LV3 [*1]	FIPS 140-3 LV3 [*1], Re-paintable	FIPS 140-3 LV3 [*1], Re-paintable	—	FIPS 140-3 LV3 [*1], Re-paintable
Bracket Chart	BRACKETS	BRACKETS	BRACKETS	BRACKETS	BRACKETS

[*1] FIPS-compliant secure element is embedded.

BOX CAMERAS



MODEL#	WV-U11301-V3	WV-U11300-V2	WV-U11301-F3	WV-U1132A	WV-U1130A
Environmental Type	Indoor	Indoor	Indoor	Indoor	Indoor
Resolution	2MP	2MP	2MP	2MP	2MP
Analytics (Max. # of AI apps installation)	i-VMD	VMD	i-VMD	VMD	VMD
Sensor	1/2.8 CMOS	1/2.8 CMOS	1/2.8 CMOS	1/3 CMOS	1/3 CMOS
Focal length / F-number	3.2 to 10.2 mm, F1.6	2.9 to 7.3 mm, F2.0	3.2 mm, F2.0	2.9 to 7.3 mm, F2.0	3.2 mm, F2.0
Optical Zoom	3.2x, Motorized	2.5x, Motorized	—	2.5x, Motorized	—
Horizontal angle of view (16:9)	31° to 114°	43° to 100°	108°	43° to 100°	100°
Built-in IR-LED	—	—	—	—	—
Min. Illumination (Color / B&W)	0.05 lx / 0.03 lx	0.07 lx / 0.04 lx	0.07 lx / 0.04 lx	0.07 lx / 0.04 lx	0.07 lx / 0.04 lx
WDR [Dynamic Range]	Yes [120dB]	Yes [120dB]	Yes [120dB]	Yes [120dB]	Yes [120dB]
Video Codec	H.265 Smart Coding	H.265 Smart Coding	H.265 Smart Coding	H.265 Smart Coding	H.265 Smart Coding
Max. fps @Max. Resolution	30 fps	30 fps	30 fps	30 fps	30 fps
Audio (In / Out / Built-in MIC)	— / — / Yes	— / — / Yes	— / — / Yes	— / — / —	— / — / —
External I/O	—	—	—	—	—
SD Memory Card Slot	microSDXC	microSDXC	microSDXC	microSDXC	microSDXC
Weather / Vandal Resistant	— / —	— / —	— / —	— / —	— / —
Operating Temperature	-10 °C to +50 °C +14 °F to +122 °F	-10 °C to +50 °C +14 °F to +122 °F	-10 °C to +50 °C +14 °F to +122 °F	-10 °C to +50 °C +14 °F to +122 °F	-10 °C to +50 °C +14 °F to +122 °F
Power Source / Consumption	PoE 6.7W	PoE 4.3W	PoE 6.7W	PoE 4.3W	PoE 3.8W
Other	FIPS 140-3 LV3 [*1], Re-paintable	—	FIPS 140-3 LV3 [*1], Re-paintable	—	—
Bracket Chart	BRACKETS	BRACKETS	BRACKETS	BRACKETS	BRACKETS

FISHEYE CAMERAS



COMING SOON



COMING SOON



COMING SOON



COMING SOON

MODEL#	WV-X45701-F1L	WV-X45701-F1LM	WV-X45501-F1L	WV-X45501-F1LM
Environmental Type	Outdoor	Outdoor	Outdoor	Outdoor
Resolution	12.5MP	12.5MP	5MP	5MP
Analytics (Max. # of AI apps installation)	Edge AI (9)	Edge AI (9)	Edge AI (9)	Edge AI (9)
Sensor	1/1.6 CMOS	1/1.6 CMOS	1/2.8 CMOS	1/2.8 CMOS
Focal length / F-number	1.7 mm, F2.0	1.7 mm, F2.0	0.95 mm, F2.0	0.95 mm, F2.0
Optical Zoom	—	—	—	—
Horizontal angle of view (16:9)	181°	181°	186°	186°
Built-in IR-LED	15 m / 49 ft.	15 m / 49 ft.	15 m / 49 ft.	15 m / 49 ft.
Min. Illumination (Color / B&W)	0.08 lx / 0 lx	0.08 lx / 0 lx	0.08 lx / 0 lx	0.08 lx / 0 lx
WDR [Dynamic Range]	Yes [120dB]	Yes [120dB]	Yes [132dB]	Yes [132dB]
Video Codec	H.265 Smart Coding	H.265 Smart Coding	H.265 Smart Coding	H.265 Smart Coding
Max. fps @Max. Resolution	30 fps	30 fps	30 fps	30 fps
Audio (In / Out / Built-in MIC)	Yes / Yes / Yes	Yes / Yes / Yes	Yes / Yes / Yes	Yes / Yes / Yes
External I/O	Yes	Yes	Yes	Yes
SD Memory Card Slot	microSDXC	microSDXC	microSDXC	microSDXC
Weather / Vandal Resistant	IP69, IP67, IP66 / IK11, 50J	IP69, IP67, IP66 / IK11, 50J	IP69, IP67, IP66 / IK11, 50J	IP69, IP67, IP66 / IK11, 50J
Operating Temperature	-40 °C to +60 °C -40 °F to +140 °F	-40 °C to +60 °C -40 °F to +140 °F	-40 °C to +60 °C -40 °F to +140 °F	-40 °C to +60 °C -40 °F to +140 °F
Power Source / Consumption	PoE, PoE+ / 12V, 24V DC 20.0W (PoE+)	PoE, PoE+ / 12V, 24V DC 20.0W (PoE+)	PoE, PoE+ / 12V, 24V DC 20.0W (PoE+)	PoE, PoE+ / 12V, 24V DC 20.0W (PoE+)
Other	FIPS 140-3 LV3 [*1], Re-paintable	FIPS 140-3 LV3 [*1] M12 connector, Re-paintable	FIPS 140-3 LV3 [*1], Re-paintable	FIPS 140-3 LV3 [*1] M12 connector, Re-paintable
Bracket Chart	BRACKETS	BRACKETS	BRACKETS	BRACKETS

[*1] FIPS-compliant secure element is embedded.

Specifications of products marked "COMING SOON" are as of April 1, 2026 and are subject to change without notice.

FISHEYE CAMERAS



MODEL#	WV-S45700-F1L	WV-S45500-F1L	WV-S4576LA WV-S4576LMA	WV-S4556LA WV-S4556LMA
Environmental Type	Outdoor	Outdoor	Outdoor	Outdoor
Resolution	9MP	5MP	9MP	5MP
Analytics (Max. # of AI apps installation)	Edge AI (3)	Edge AI (3)	Edge AI (3)	Edge AI (3)
Sensor	1/1.6 CMOS	1/2.8 CMOS	1/2 CMOS	1/3 CMOS
Focal length / F-number	1.7 mm, F2.0	0.95 mm, F2.0	1.4 mm, F1.9	0.84 mm, F2.4
Optical Zoom	—	—	—	—
Horizontal angle of view (16:9)	181°	186°	183°	186°
Built-in IR-LED	TBD	TBD	14 m / 46 ft.	14 m / 46 ft.
Min. Illumination (Color / B&W)	0.08 lx / 0 lx	0.08 lx / 0 lx	0.2 lx / 0 lx	0.11 lx / 0 lx
WDR [Dynamic Range]	Yes [120dB]	Yes [132dB]	Yes [84dB]	Yes [120dB]
Video Codec	H.265 Smart Coding	H.265 Smart Coding	H.265 Smart Coding	H.265 Smart Coding
Max. fps @Max. Resolution	30 fps	30 fps	30 fps	30 fps
Audio (In / Out / Built-in MIC)	Yes / Yes / —	Yes / Yes / —	Yes / Yes / —	Yes / Yes / —
External I/O	Yes	Yes	Yes	Yes
SD Memory Card Slot	microSDXC	microSDXC	SDXC	SDXC
Weather / Vandal Resistant	IP66 / IK10, 50J	IP66 / IK10, 50J	IP66 / IK10, 50J	IP66 / IK10, 50J
Operating Temperature	-40 °C to +60 °C -40 °F to +140 °F	-40 °C to +60 °C -40 °F to +140 °F	-40 °C to +60 °C -40 °F to +140 °F	-40 °C to +60 °C -40 °F to +140 °F
Power Source / Consumption	PoE / 12V DC 13.2W	PoE / 12V DC 12.5W (PoE)	PoE / 12V DC 12.95W (PoE)	PoE / 12V DC 12.5W (PoE)
Other	FIPS 140-3 LV3 [*1]	FIPS 140-3 LV3 [*1]	FIPS 140-2 LV3 [*1], Re-paintable, Railway Application / M12 connector (S4576LMA)	FIPS 140-2 LV3 [*1], Re-paintable, Railway Application / M12 connector (S4556LMA)
Bracket Chart	BRACKETS	BRACKETS	BRACKETS	BRACKETS

FISHEYE CAMERAS



MODEL#	WV-X41701-F1	WV-X41501-F1	WV-S41700-F1	WV-S41500-F1	WV-S4176A	WV-S4156A
Environmental Type	Indoor	Indoor	Indoor	Indoor	Indoor	Indoor
Resolution	12.5MP	5MP	9MP	5MP	9MP	5MP
Analytics (Max. # of AI apps installation)	Edge AI (9)	Edge AI (9)	Edge AI (3)	Edge AI (3)	Edge AI (3)	Edge AI (3)
Sensor	1/1.6 CMOS	1/2.8 CMOS	1/1.6 CMOS	1/2.8 CMOS	1/2 CMOS	1/3 CMOS
Focal length / F-number	1.7 mm, F2.0	0.95 mm, F2.0	1.7 mm, F2.0	0.95 mm, F2.0	1.4 mm, F1.9	0.84 mm, F2.4
Optical Zoom	—	—	—	—	—	—
Horizontal angle of view (16:9)	181°	186°	181°	186°	183°	186°
Built-in IR-LED	—	—	—	—	—	—
Min. Illumination (Color / B&W)	0.08 lx / 0.06 lx	0.08 lx / 0.06 lx	0.08 lx / 0.06 lx	0.08 lx / 0.06 lx	0.2 lx / 0.2 lx	0.11 lx / 0.11lx
WDR [Dynamic Range]	Yes [120dB]	Yes [132dB]	Yes [120dB]	Yes [132dB]	Yes [84dB]	Yes [120dB]
Video Codec	H.265 Smart Coding	H.265 Smart Coding	H.265 Smart Coding	H.265 Smart Coding	H.265 Smart Coding	H.265 Smart Coding
Max. fps @Max. Resolution	30 fps	30 fps	30 fps	30 fps	30 fps	30 fps
Audio (In / Out / Built-in MIC)	Yes / Yes / Yes	Yes / Yes / Yes	Yes / Yes / Yes	Yes / Yes / Yes	Yes / Yes / Yes	Yes / Yes / Yes
External I/O	Yes	Yes	Yes	Yes	Yes	Yes
SD Memory Card Slot	microSDXC	microSDXC	microSDXC	microSDXC	SDXC	SDXC
Weather / Vandal Resistant	IP44	IP44	—	—	— / —	— / —
Operating Temperature	-10 °C to +50 °C +14 °F to +122 °F	-10 °C to +50 °C +14 °F to +122 °F	-10 °C to +50 °C +14 °F to +122 °F	-10 °C to +50 °C +14 °F to +122 °F	-10 °C to +50 °C +14 °F to +122 °F	-10 °C to +50 °C +14 °F to +122 °F
Power Source / Consumption	PoE / 12V, 24V DC 11.5W (PoE)	PoE / 12V, 24V DC 11.5W (PoE)	PoE / 12V DC 8.6W (PoE)	PoE / 12V DC 6.7W (PoE)	PoE / 12V DC 8.6W (PoE)	PoE / 12V DC 6.7W (PoE)
Other	FIPS 140-3 LV3 [*1], Re-paintable	FIPS 140-3 LV3 [*1], Re-paintable	FIPS 140-3 LV3 [*1]	FIPS 140-3 LV3 [*1]	FIPS 140-2 LV3 [*1]	FIPS 140-2 LV3 [*1]
Bracket Chart	BRACKETS	BRACKETS	BRACKETS	BRACKETS	BRACKETS	BRACKETS

[*1] FIPS-compliant secure element is embedded.

Specifications of products marked "COMING SOON" are as of April 1, 2026 and are subject to change without notice.

OUTDOOR COMPACT CAMERAS



MODEL#	WV-X35402-F2L (F2LM) WV-S35402-F2L (F2LG)(F2L1)	WV-X35302-F2L (F2LM) WV-S35302-F2L (F2LG)(F2L1)	WV-U35401-F2L (F2LG)	WV-U35301-F2L (F2LG)
Environmental Type	Outdoor	Outdoor	Outdoor	Outdoor
Resolution	4MP	2MP	4MP	2MP
Analytics (Max. # of AI apps installation)	Edge AI (1)	Edge AI (2)	VMD	VMD
Sensor	1/2.8 CMOS	1/2.8 CMOS	1/2.7 CMOS	1/2.8 CMOS
Focal length / F-number	2.4 mm, F2.1	2.4 mm, F2.1	2.4 mm, F2.1	2.4 mm, F2.1
Optical Zoom	—	—	—	—
Horizontal angle of view (16:9)	121°	132°	128°	123°
Built-in IR-LED	14 m / 46 ft. 10 m / 33 ft. (F2LG)	21 m / 69 ft. 15 m / 49 ft. (F2LG)	14 m / 46 ft. 10 m / 33 ft. (F2LG)	21 m / 69 ft. 15 m / 49 ft. (F2LG)
Min. Illumination (Color / B&W)	0.07 lx / 0 lx 0.19 lx / 0 lx (F2LG)	0.02 lx / 0 lx 0.05 lx / 0 lx (F2LG)	0.24 lx / 0 lx 0.66 lx / 0 lx (F2LG)	0.08 lx / 0 lx 0.22 lx / 0 lx (F2LG)
WDR [Dynamic Range]	Yes [132dB]	Yes [144dB]	Yes [102dB]	Yes [120dB]
Video Codec	H.265 Smart Coding	H.265 Smart Coding	H.265 Smart Coding	H.265 Smart Coding
Max. fps @Max. Resolution	30 fps	60 fps	30 fps	30 fps
Audio (In / Out / Built-in MIC)	— / — / Yes	— / — / Yes	— / — / Yes	— / — / Yes
External I/O	—	—	—	—
SD Memory Card Slot	microSDXC	microSDXC	microSDXC	microSDXC
Weather / Vandal Resistant	IP66 / IK10	IP66 / IK10	IP66 / IK10	IP66 / IK10
Operating Temperature	-40 °C to +60 °C (X-series) -40 °F to +140 °F (X-series) -40 °C to +50 °C (S-series) -40 °F to +122 °F (S-series)	-40 °C to +60 °C (X-series) -40 °F to +140 °F (X-series) -40 °C to +50 °C (S-series) -40 °F to +122 °F (S-series)	-30 °C to +50 °C -22 °F to +122 °F	-30 °C to +50 °C -22 °F to +122 °F
Power Source / Consumption	PoE 8.6W (PoE)	PoE 8.6W (PoE)	PoE 8.6W (PoE)	PoE 8.6W (PoE)
Other	FIPS 140-2 LV3 [*1], Railway standards (X-series), M12 connector (F2LM), Smoked dome (F2LG), Black (F2L1)	FIPS 140-2 LV3 [*1], Railway standards (X-series), M12 connector (F2LM), Smoked dome (F2LG), Black (F2L1)	Smoked dome (F2LG)	Smoked dome (F2LG)
Bracket Chart	BRACKETS	BRACKETS	BRACKETS	BRACKETS

INDOOR COMPACT CAMERAS



MODEL#	WV-S32402-F2L (F2LG) (F2L1)	WV-S32302-F2L (F2LG) (F2L1)	WV-U31401-F2L (F2LG)	WV-U31301-F2L (F2LG)	WV-S71300A-F3
Environmental Type	Indoor Vandal	Indoor Vandal	Indoor	Indoor	Indoor
Resolution	4MP	2MP	4MP	2MP	2MP
Analytics (Max. # of AI apps installation)	Edge AI (1)	Edge AI (2)	VMD	VMD	Edge AI (3)
Sensor	1/2.8 CMOS	1/2.8 CMOS	1/2.7 CMOS	1/2.8 CMOS	1/2.8 CMOS
Focal length / F-number	2.4 mm, F2.1	2.4 mm, F2.1	2.4 mm, F2.1	2.4 mm, F2.1	3.2 mm, F2.0
Optical Zoom	—	—	—	—	—
Horizontal angle of view (16:9)	121°	132°	128°	123°	81.1°
Built-in IR-LED	14 m / 46 ft. 10 m / 33 ft. (F2LG)	21 m / 69 ft. 15 m / 49 ft. (F2LG)	14 m / 46 ft. 10 m / 33 ft. (F2LG)	21 m / 69 ft. 15 m / 49 ft. (F2LG)	—
Min. Illumination (Color / B&W)	0.07 lx / 0 lx 0.19 lx / 0 lx (F2LG)	0.02 lx / 0 lx 0.05 lx / 0 lx (F2LG)	0.24 lx / 0 lx 0.66 lx / 0 lx (F2LG)	0.08 lx / 0 lx 0.22 lx / 0 lx (F2LG)	0.21 lx / 0.2 lx
WDR [Dynamic Range]	Yes [132dB]	Yes [144dB]	Yes [102dB]	Yes [120dB]	—
Video Codec	H.265 Smart Coding	H.265 Smart Coding	H.265 Smart Coding	H.265 Smart Coding	H.265 Smart Coding
Max. fps @Max. Resolution	30 fps	60 fps	30 fps	30 fps	30 fps
Audio (In / Out / Built-in MIC)	— / — / Yes	— / — / Yes	— / — / Yes	— / — / Yes	— / — / Yes
External I/O	—	—	—	—	—
SD Memory Card Slot	microSDXC	microSDXC	microSDXC	microSDXC	microSDXC
Weather / Vandal Resistant	— / IK10	— / IK10	— / —	— / —	IP44 / —
Operating Temperature	0 °C to +40 °C +32 °F to +104 °F	0 °C to +40 °C +32 °F to +104 °F	0 °C to +40 °C +32 °F to +104 °F	0 °C to +40 °C +32 °F to +104 °F	-10 °C to +40 °C +14 °F to +104 °F
Power Source / Consumption	PoE 8.6W (PoE)	PoE 8.6W (PoE)	PoE 8.6W (PoE)	PoE 8.6W (PoE)	PoE / USB Type-C 8.2W (PoE)
Other	FIPS 140-2 LV3 [*1], Smoked dome (F2LG), Black (F2L1)	FIPS 140-2 LV3 [*1], Smoked dome (F2LG), Black (F2L1)	Smoked dome (F2LG)	Smoked dome (F2LG)	FIPS 140-2 LV3 [*1], USB I/F for setting thru Wi-Fi
Bracket Chart	BRACKETS	BRACKETS	BRACKETS	BRACKETS	BRACKETS

[*1] FIPS-compliant secure element is embedded.

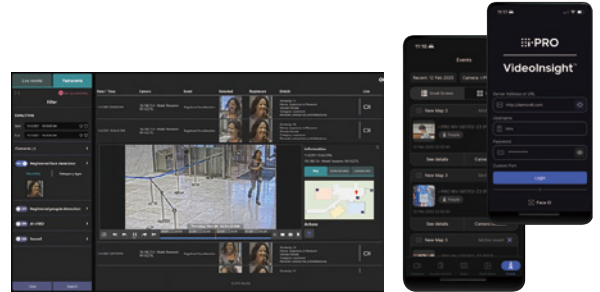
i-PRO Active Guard

UNLOCK THE POWER OF EDGE AI INSIDE YOUR VMS - AI-POWERED FORENSIC SEARCH, REAL-TIME ALERTS, AND OPERATIONAL INSIGHTS

i-PRO Active Guard is an AI-powered search, alerting, and visualization platform that transforms video metadata from edge AI cameras into actionable intelligence. It enables real-time alerts and rapid forensic search for people, vehicles, faces, and events, supporting proactive security and efficient investigations.

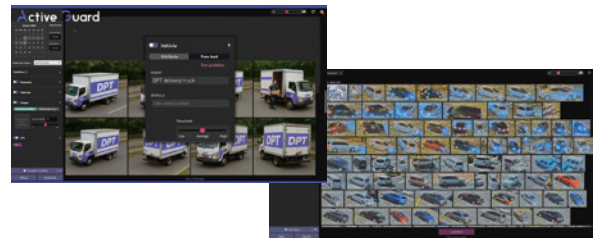
Immediate response to or prevention of incidents

- Detect various events such as intruder, on-site learning object, scene change, occupancy, gunshot sound, and watchlist alarm for specific faces, people, vehicle and license plate group, Container code and OCR code. Rule-based action on VMS enables automation of system behavior when an event occurs.
- A mobile application* frees you from work in a monitoring room. Also, by linking the PC software and mobile application, the necessary information can be transmitted from a person in the monitoring room to the security guards outside. *Video Insight only.



Significant reduction in post investigation time

- Searching by face, license plate, people and vehicle attributes, region of interest, and free text enables fast investigations in a matter of seconds instead of hours.
- Free Text Search allows you to search using natural language descriptions, such as appearance, clothing, or carried objects, even when predefined filters are not available.
- This advantage is maximized by many supported attributes with high precision based on i-PRO deep learning technology and by the high image quality of the i-PRO camera.



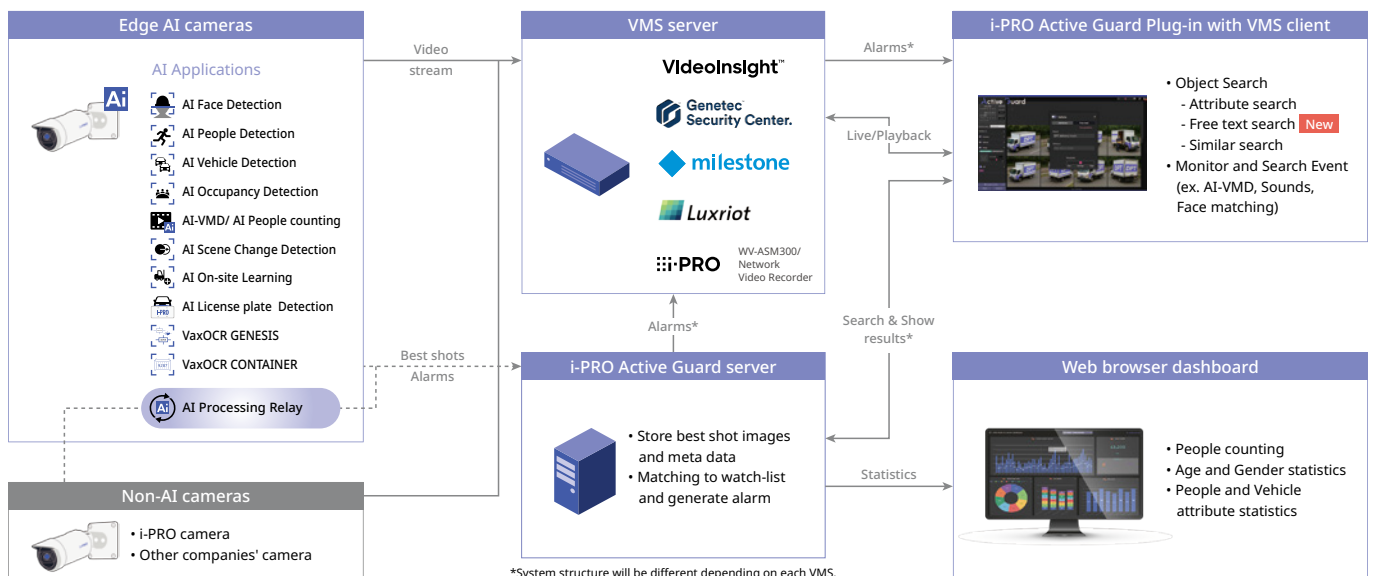
Customizable dashboard display for business intelligence

- The dashboard on the web browser shows people counting, license plate counting, face and gender statistics, and people and vehicle attribute statistics. This can be used not only for security monitoring but also for operational analysis and business intelligence.
- Users can customize the content, size, location, data display period, etc. shown according to their needs.



Flexible system architecture

- Fully integrated into devices from Genetec, Milestone, and Luxriot, as well as Video Insight.
- No need for expensive analysis server thanks to edge-based AI processing.
- By installing the required AI Edge Applications on each camera, AI performance can be utilized efficiently without unnecessary system load or infrastructure.



Edge AI Analytics

GO BEYOND TRADITIONAL ANALYTICS WITH INTELLIGENT SOLUTIONS FROM i-PRO

In today's environment, more users are looking to actively manage large surveillance systems. As these systems become more complex, i-PRO's intelligent analytics can help users by reducing the learning curve and system resources required to operate them. From improving the accuracy of alarms and notifications to reducing the overall system bandwidth and storage requirements, i-PRO Intelligent analytics has you covered.

- Change your surveillance system from reactive to proactive and anticipate situations before they occur.
- i-PRO surveillance users can gain added sight awareness with intelligent analytics via scene analysis.
- Optimized feature solutions for schools, municipalities, and commercial facilities.
- i-PRO analytics may be deployed either at the edge or server level providing a flexible deployment.

ANALYTICS AT THE EDGE



AI-VMD / AI Counting (crossline)

AI-VMD can identify between objects. The cameras actively read the scene and uniquely differentiate between people, vehicles and two-wheeled vehicles. Additionally, AI-VMD offers users intelligent functionality such as line-crossing detection and counting, tailgating detection, loitering detection, and directional detection.



AI On-site Learning

AI On-site Learning allows to enhance AI-VMD by adding target object and improving accuracy. You can add customized objects to detect using on-site camera footage through a simple learning process. In addition, it contributes to reduce missed/false alarms by training based on the past footage.



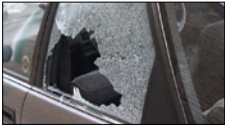
AI People / Vehicle / Face Detection

These analytics allow you to detect people, vehicles, faces, and send the metadata and best images to the server. They are compatible with i-PRO Active Guard, a search function that quickly finds people or vehicles through the video management software, Video Insight, Genetec, Milestone, Luxriot etc.



AI Scene Change Detection

Scene Change Detection is the first AI-based analytic application that provides easy on-site learning of a scene. When anomalies occur within the camera's field of view, an alert can be sent to security and operations teams. It's particularly good at an object left behind or illegal parking scenarios.



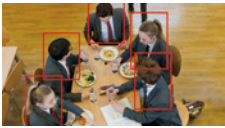
AI Sound Classification

AI Sound Classification allows you to detect suspicious sounds, such as gunshots, screaming, vehicle horns or glass breaking.



AI Privacy Guard

When deployed on i-PRO AI engine cameras, AI Privacy Guard protects the privacy of individuals within the scene by applying a mosaic over their face or full body in real time.



AI Occupancy Detection / AI Counting (area)

When deployed on an i-PRO AI engine camera, AI Occupancy Detection will be able to detect the crowd congestion and send the pop-up alarm notification.

Information of the number of people in the area can be output externally via HTTP or MQTT.



AI Processing Relay

AI processing relay enables to turn "non-AI cameras" into "AI cameras" without any re-installation costs. It receives MJPEG data from non-AI cameras, performs AI processing with AI extension software, and performs alarm reception and image search with i-PRO Active Guard.

Management Software

i-PRO Management Software

WV-ASM300W

Extension Software

WV-ASE202W / WV-ASE203W / WV-ASE205W

Easy setting: New WV-ASM300W software enable a whole setting from camera configuration to recorder configuration.

- Up to 100 recorders, 64 encoders and 256 directly connected cameras can be registered. Up to 6,400 cameras registered in the recorders and 256 cameras registered in the encoders are automatically registered in the WV-ASM300W (the number of the cameras depends on the recorder and encoder).
- Encryption of SSL and data encryption support latest "AES-256bit key" strong encryption.
- MP4 data direct download from WJ-NX310,NX410,NX510,NU101,NU201,NU300,NU301.
- When used with WJ-NX310,NX410,NX510,NU101,NU201,NU300,NU301, VMD, thumbnail search can be operated.
- Selecting the camera icon in map window, a still image of the camera is overlaid.
- Live window, Map window in addition to the Operation window (3 monitors).
- Control using the System Controller WV-CU980
https://i-pro.com/products_and_solutions/en/surveillance/products/wv-cu980
- 3D Dewarp: virtual PTZ operations for better operability and monitoring experience.

*To use the multi-monitor function, it is necessary to install an additional video card on the PC in use.



*monitor displays are optional.

Optional software

WV-ASE202W

- Expand the maximum numbers of screens to 64.
- Up to 4 live windows.
- Multi-monitor function using up to 6 PC monitors.
- To display the operation window, the map window and the 4 map windows simultaneously.

WV-ASE203W

- Expand the maximum numbers of registered recorders, encoders and cameras to 100, 64 and 256 respectively.
- Up to 4 licenses for the WV-ASE203W can be added.

WV-ASE205W

- Visibility Enhancement Function.

Spatial Tonal Correction

Snowfall and Rainfall Noise Reduction

Multi-frame Synthesis Noise Reduction

i-PRO Mobile APP

Applications for Smartphone/Tablet



Supported OS:
Android™ OS 10.0 or later
iOS 18.0 or later
(As of April 1, 2026)

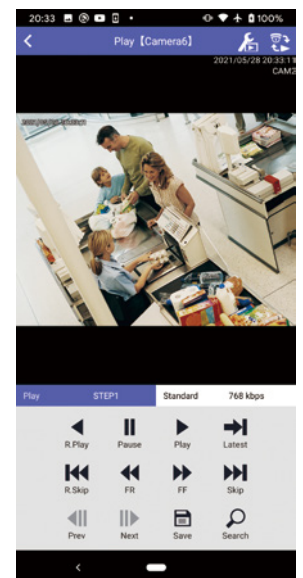
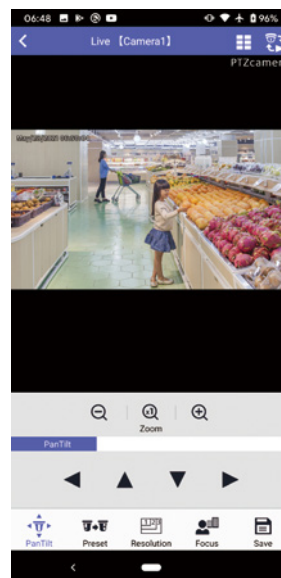
Overview

i-PRO Mobile APP is a smartphone application that can view the images of the following i-PRO devices.

- Network cameras
- Network interface units
- Digital disk recorders
- Network disk recorders

Functions

- Check live video
- Control live video
- Play recorded video
- Download playback video
- Check statistics in a graph
- Alarm notification



For Android



For iOS



NVR WJ-NX310 / NX410 / NX510 Series

NX Series Features

- Secure high-bandwidth recording
- High reliability and redundancy
- Scalable storage
- High security
 - GlobalSign® certificates pre-installed
 - FIPS 140-2 LV3 [*1]
- Onvif/RTSP supported
- Remote Monitoring

[*1] FIPS 140-2 level 3-compliant secure element is embedded



WJ-NX410 / NX510 Recorder



WJ-NX310 Recorder



NVRs



MODEL#	WJ-NX310	WJ-NX410	WJ-NX510	WJ-HXE410
Type	NETWORK VIDEO RECORDERS			HDD Extension Unit
Video Compression	H.265 / H.264 / JPEG			
Camera Channel	Default / Max	16 ch / 32 ch	32 ch / 64 ch	64 ch / 128 ch
PoE port	—			
Throughput	Recording / Output	256 Mbps / 256 Mbps	384 Mbps / 256 Mbps	—
Max HDD	4 HDDs	9 HDDs (Main Unit) 54 HDDs (with 5 x WJ-HXE410)	9 HDDs	9 HDDs
Max HDD capacity for each SATA	Up to 18TB			
RAID	RAID 1	RAID 1, 5, 6		
Monitor Output	2 x HDMI (4K)			—
Alarm Port	9 inputs / 1 output	32 inputs / 4 outputs		—
Simultaneous User Access	Max 16 users			—
Network Interface	2 x 1000BASE-T	2 x 1000BASE-T, 1 x 100BASE-TX (for maintenance)		—
Operating Temperature	0 °C to +45 °C / +32 °F to +113 °F			
Dimensions (inch)	(W)420 x (D)370 x (H)88(mm) (W)16-17/32 x (D)14-9/16 x (H)3-15/32(inches)	(W)430 x (D)413 x (H)132(mm) (W)16-15/16 x (D)16-1/4 x (H)5-3/16(inches)		(W)430 x (D)416 x (H)132(mm) (W)16-15/16 x (D)16-3/8 x (H)5-3/16(inches)
Weight	7 kg / 15.4 lbs. (no HDD)	11.5 kg / 25.4 lbs. (no HDD)		11.0 kg / 24.3 lbs. (no HDD)
Standard Accessory	Rack mount			

OPTIONAL ACCESSORIES

	FOR WJ-NX310	FOR WJ-NX410	FOR WJ-NX510	FOR WJ-HXE410
HDD Extension Unit	—	WJ-HXE410		—
Additional License	Camera CH Kit	WJ-NXE42W (32 camera license)	WJ-NXE52W (32 camera license)	—
			WJ-NXE33W (16 camera license)	
	Data Encryption Kit			—
	WJ-NXS01W (1 camera) / WJ-NXS04W (4 cameras) / WJ-NXS16W (16 cameras) / WJ-NXS32W (32 cameras)			—

NVR with a build-in PoE+ switch WJ-NU101 / 201 / 300 / 301 Series

NU Series Features

- NVR with a build-in PoE+ switch
- Easy installation
- Scalable Storage
- Perfectly adapted to i-PRO AI products
- High security
 - GlobalSign® certificates pre-installed
 - FIPS 140-2 LV3 [*1]
- Connectivity
 - RTSP supported
- Remote monitoring



WJ-NU301 Recorder



WJ-NU101 / 201 / 300 Recorder



[*1] FIPS 140-2 level 3-compliant secure element is embedded

NVR with a build-in PoE+ switch



MODEL#	WJ-NU101		WJ-NU201		WJ-NU300		WJ-NU301	
Type	NVR WITH A BUILD-IN POE+ SWITCH							
Video Compression	H.265 / H.264 / JPEG							
Max Camera Channel	4 ch		8 ch		16 ch			
Video Throughput	Recording / Output 48 Mbps / 48 Mbps		64 Mbps / 64 Mbps		128 Mbps / 128 Mbps			
HDD slot	1 HDD (Main Unit)				2 HDDs (Main Unit)			
Max HDD capacity for each SATA	Up to 20 TB							
Network Interface	4 x 10BASE-T 100BASE-TX (RJ45, PoE+)	1 x 10BASE-T 100BASE-TX 1000BASE-T (RJ45)	8 x 10BASE-T 100BASE-TX (RJ45, PoE+)	1 x 10BASE-T 100BASE-TX 1000BASE-T (RJ45)	8 x 10BASE-T 100BASE-TX (RJ45, PoE+)	1 x 10BASE-T 100BASE-TX 1000BASE-T (RJ45)	16 x 10BASE-T 100BASE-TX (RJ45, PoE+)	1 x 10BASE-T 100BASE-TX 1000BASE-T (RJ45)
PoE budget	4 port Total Max 50W Each port Max:30W		8 port Total Max 110W Each port Max:30W				16 port Total Max 233W Each port Max:30W	
RAID	—				RAID1			
Monitor Output	2 x HDMI (1x 4K, 1x Full HD)							
Alarm Port	In:4 / out:1 (Additional General purpose I/O :2)							
Simultaneous User Access	Max 16 users							
Operating Temperature	0 °C to +45 °C / +32 °F to +113 °F							
Dimensions (inch)	(W)340 x (D)230 x (H)44(mm) (W)13-3/8 x (D)9-1/16 x (H)1-23/32(inches)						(W)420 x (D)300 x (H)88(mm) (W)16-17/32 x (D)11-13/16 x (H)3-15/32(inches)	
Weight	2.1 kg / 4.6 lbs						4.7 kg / 10.4 lbs	

OPTIONAL ACCESSORIES

	FOR WJ-NU101	FOR WJ-NU201	FOR WJ-NU300	FOR WJ-NU301
Vertical Mount		 WV-QRM001		
Rack Mount		 WV-QRM101		 WV-QRM201
Wall Mount		 WV-QRM201		

Accessories

i-PRO SD MEMORY CARDS



MODEL#	WV-SDA032G	WV-SDA128G	WV-SDA256G	WV-SDA512G
Type	SDHC	SDXC	SDXC	SDXC
Storage	32 GB	128 GB	256 GB	512 GB

i-PRO MICRO SD MEMORY CARDS



MODEL#	WV-SDB064G	WV-SDB128G	WV-SDB256G
Type	microSDXC	microSDXC	microSDXC
Storage	64 GB	128 GB	256 GB

MICROPHONE



MODEL#	WV-PM500
Directionality	Non-directional
Power	Plug-in power type, 1.5 VDC to 5 VDC, Max. current: 300 uA
Terminal / Cable	3.5 mm stereo mini plug (L ch monaural) Cable length: 2.6 m / 8.53 ft.
Operating Temperature	-20 °C to +60 °C / -4 °F to +140 °F
Dust and Water Resistant	IP65

POE INJECTOR



MODEL#	WJ-PU201/G	WJ-PU201F/G
Power Input	100 to 240V AC	100 to 240V AC
Max. Power output	60W @ -10 °C to +40 °C, 60W @ +14 °F to +104 °F 30W @ -10 °C to +50 °C, 30W @ +14 °F to +122 °F	60W @ -10 °C to +40 °C, 60W @ +14 °F to +104 °F 30W @ -10 °C to +50 °C, 30W @ +14 °F to +122 °F
Network Interface	10BASE-T/100BASE-TX/1000BASE-T, RJ45 connector (x2)	10BASE-T/100BASE-TX/1000BASE-T, RJ45 connector (x2) Standard SFP module port (LC type) (x1)
IEEE Standards	IEEE802.3bt/at/af	IEEE802.3bt/at/af
Dimensions	(W) 65 mm x (D) 163 mm x (H) 36 mm (W) 2-9/16 x (D) 6-13/32 (inches) x (H) 1-13/32 (inches)	(W) 80 mm x (D) 184 mm x (H) 50 mm (W) 3-5/32 x (D) 7-1/4 x (H) 1-31/32 (inches)

COAXIAL-LAN CONVERTER



MODEL#	WJ-PC200	WJ-PR204	WJ-PR201
Device Type	Camera Side Unit	4CH Receiver	1CH Receiver
Max. Distance w/ AC adaptor	PoE cam	500 m (1,640 ft.)	
	non - PoE cam	500 m (1,640 ft)	2.0 km (6,561 ft)
Optional Rack Mount	—	BY-HCA10A	

SYSTEM CONTROLLER



MODEL#	WV-CU980
Specifications	Integrated control for Camera, Recorder and GUI: - 3D Joystick for Pan/Tilt/Zoom control - Work with WV-ASM300, Video Insight VIM+ version 7.6 or later * WV-ASM200, WV-ASC970 is not supported

Security Radar

i-PRO Security Radar delivers wide-area, high-precision detection for vehicles and people, even in challenging environments. Seamlessly integrating with AI-powered cameras, it provides intelligent, real-time protection for critical sites.



MODEL#	WV-RD5500-CE	WV-RD5500-CSE
Horizontal Detection Angle	180° wide-area coverage (up to 100 m [328 ft.] for vehicles, 70 m [230 ft.] for people)	
Detection Coverage	Human detection: 7,700 m ² Vehicle detection: 15,700 m ²	
PTZ camera linked tracking	Up to 4 cameras	
Object classification	Human, Vehicle, unknown	
Secure	FIPS 140-3 LV3 (FIPS-compliant secure element is embedded.)	
Water and Dust Resistance	IP66	
Shock Resistance	IK10	
Corrosion Resistance	—	Heavy salt damage resistance specifications (ISO 14993 compliant)
Optional	WV-QCA503	

*Available only in Vietnam and New Zealand.

Network Camera Model Number Format

Network Camera Model Number Format

W	V	-	S	2	5	7	0	0	-	V	2	L	N			
		Series	Form	Environment	Resolution	Serial	Version			Lens1	Lens2	Feature	Color			
X : eXtraordinary	8 : Multi-Sensor	7 : Outdoor Vandal	7 : 4K	00 - 99	None	F : Fixed lens	None : No lens	L : IR-LED	None : White							
S : Standard	7 : Mini	+ Salt resistance	6 : 6MP	A, B, C	V : Vari-focal	Y, 1 to 9 :	M : M12 connector	1, -1 : Black								
U : Utility	6 : PTZ	6 : Outdoor Vandal	5 : 5MP		T : Long focal	See below	G : Smoked Dome	2, -2 : Silver								
	4 : 360-deg	5 : Outdoor Vandal	4 : 4MP		Z : Zoom lens		N : ClearSight	3, -3 : Gray								
	3 : Compact Dome	4 : Outdoor Normal	3 : 2MP		U : No Lens		S : Salt resistant	4, -4 : Brown								
	2 : Dome	2 : Indoor Vandal	1 : 1MP				K : ClearSight & Salt resistant									
	1 : Box	1 : Indoor Normal														

		Lens2						
		Y	1	2	3	4	5	6
Lens1	F	-	1 - 1.9 mm	2 - 2.9 mm	3 - 3.9 mm	4 - 4.9 mm	5 - 5.9 mm	6 - 6.9 mm
	V, T	-	1 - 1.9x	2 - 2.9x	3 - 3.9x	4 - 4.9x	5 - 5.9x	6 - 6.9x
	Z	< 10x	10 - 19.9x	20 - 29.9x	30 - 39.9x	40 - 49.9x	50 - 59.9x	60 - 69.9x

Accessory Model number structure

W	V	-	Q	S	R	5	0	3	F	-	W
		Product Type	Serial			Option	Version			Color	
		EM : Embedded	AT : Attachment	M : Male screw (ISO)	None, A, B	G : Gray					
		CL : Ceiling	CA : Cable	M1 : Male screw (ANSI)		S : Silver					
		WL : Wall	LR : Light Rail	F : Female screw (ISO)		B : Black					
		PL : Pole	CD : Ceiling Dome	F1 : Female screw (ANSI)		W : i-PRO white, White					
		CN : Corner	WD : Wall+Dome cover	C : Clear Dome							
		SR : Shroud	ED : Embedded+Dome cover	G : Smoked Dome							
		JB : Junction Box, Base cover	DC : Dome cover	S : Salt resistant							
				N : ClearSight							

System Design Tool

The System Design Tool is a great tool that can be used on the web anytime, anywhere, greatly reducing the work required for system design.

Features and Benefits

- Interactive:
 - When the camera setting conditions are changed, the perception and size of the subject can be immediately simulated.
- Optimization:
 - The ideal camera placement and number can be calculated while confirming the overlap in the recording range between cameras.
- Accessible:
 - Data saved as a project can be accessed from the web at any time.
- Utilization:
 - You can export the design results as a report or CSV and use it as proposal data.



Recorder Calculation

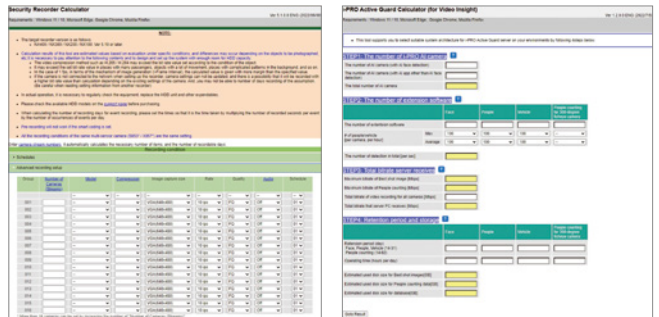
It is possible to estimate the number of recorders and necessary options that can be used according to the number of cameras, network bandwidth, and number of recording days.

* Select the target recorder or VMS.

WJ-NX400K	WJ-NX300K	WJ-NX200KP	WJ-NX100	VMS
* To set [Recording Days/Recording Group: 02], set the target camera to [02] in [Recording Group] of [Extra function].				
Estimate condition				
Number of units	HDD capacity	Recording days (Recording group:01)	HDMI output	
Automatic	2TB	150 days	Yes	
* Enter [Recording condition], the necessary device configuration is displayed in [Result].				
* Select [HDMI output: On], the number of cameras will be limited to 64 standard streams.				
Result				
Bandwidth		Data size		
12.25 Mbps		21.97 TB		
Model	MAIN	EXT	HDD (MAIN / EXT)	Maximum recordable days (Same HDD / Same Unit / Max Config)
WJ-NX400K	1	WJ-NX400	Group 01 9 2	150 / 245 / 737 days
			Group 02	
		Total 11		
Camera Kits		Secure Communication Kits		
Stream numbers 8		Stream numbers 0		
WJ-NX400W ..		WJ-NXS320W .. WJ-NXS160W ..		
		WJ-NXS040W .. WJ-NXS010W ..		

System design calculators

Recorder settings and i-PRO Active Guard software settings simulation can be easily performed using web calculation tools. Advanced knowledge and skills are not required.



i-PRO Configuration Tool (iCT)

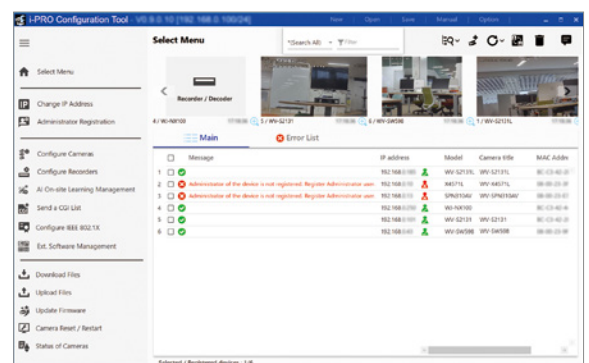
i-PRO Configuration Tool is designed to efficiently configure the settings and maintenance of up to 1,024 i-PRO devices (network cameras, disk recorders, etc.) through a personal computer via a network.

Features and Benefits

- Camera batch settings for up to 1,024 multiple cameras
- Camera advanced settings with image stream viewing screen
- AI extension software batch installation and advanced settings
- Generation of devices settings report with camera view images
- Collective maintenance of devices, including automatic firmware updates

Related products of i-PRO Configuration Tool

- i-PRO Settings Plug-in for Genetec / for Milestone XProtect



Security Camera Accessory Chart

MULTI-DIRECTIONAL + PTZ CAMERAS

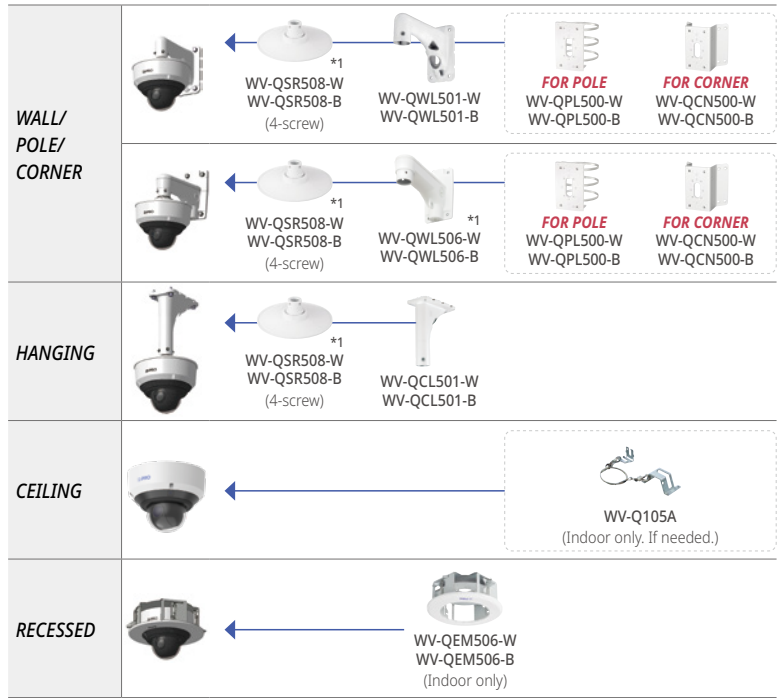


OUTDOOR

WV-X86531-Z2	White
WV-X86531-Z2-1	Black
WV-X86530-Z2	White
WV-X86530-Z2-1	Black

ACCESSORIES

PICTURE	SKU DESCRIPTION	ALL
	WV-QDC502G Smoked Dome	✓
	WV-QDC502C Clear Dome	✓
	WV-QCA501A Multi Cable (Ext I/O, Audio, DC)	✓
	WJ-PU201/G PoE++ injector	✓
	WJ-PU201F/G PoE++ injector	✓



MULTI-SENSOR CAMERAS

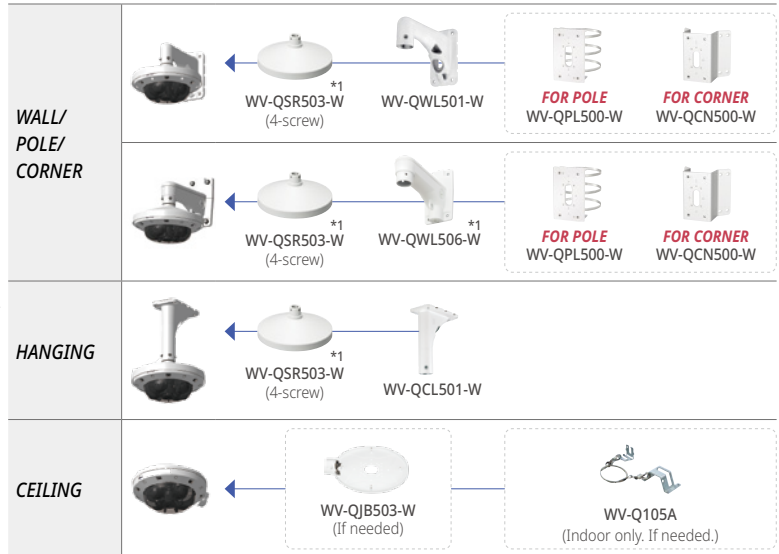


OUTDOOR

WV-S8574L, LG	White
WV-S8573L, LG	White
WV-S8564L, LG	White
WV-S8563L, LG	White
WV-S8544L, LG	White
WV-S8543L, LG	White
WV-S8544, G	White
WV-S8543, G	White

ACCESSORIES

PICTURE	SKU DESCRIPTION	ALL
	WV-QDC501G Smoked Dome	✓
	WV-QDC501C Clear Dome	✓
	WV-QCA501A Multi Cable (Ext I/O, Audio, DC)	✓



DUAL-SENSOR CAMERAS

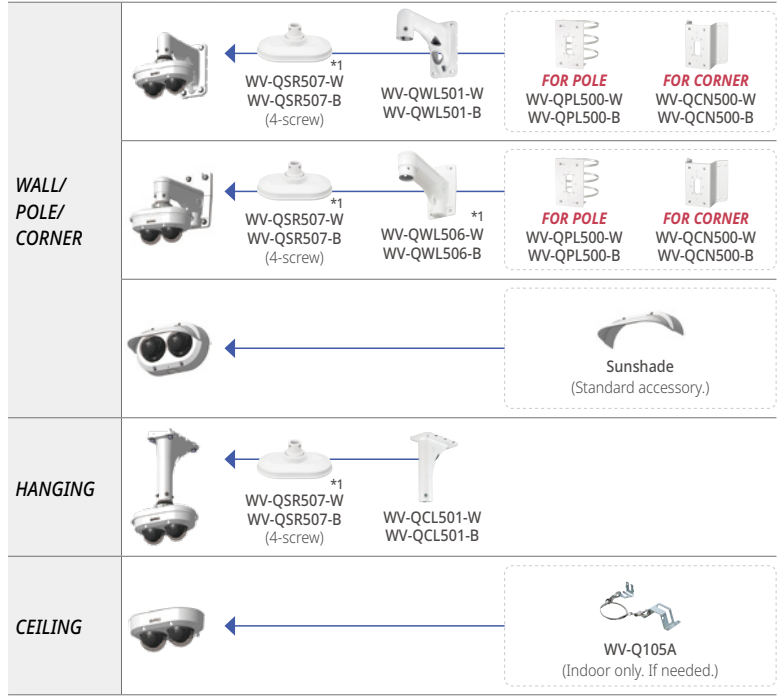


OUTDOOR

WV-S85702-F3L WV-S85702-F3L1	White Black
WV-S85402-V2L WV-S85402-V2L1	White Black
WV-U85402-V2L WV-U85402-V2L1	White Black

ACCESSORIES

PICTURE	SKU DESCRIPTION	ALL
	WV-CW7S Smoked Dome	✓
	WV-QDC504C Clear Dome	✓
	WV-CW7SN Smoked Dome with ClearSight Coating	✓
	WV-CW7CN Clear Dome with ClearSight Coating	✓
	WV-QCA501A Multi Cable (Ext I/O, Audio, DC)	✓



OUTDOOR PTZ CAMERAS

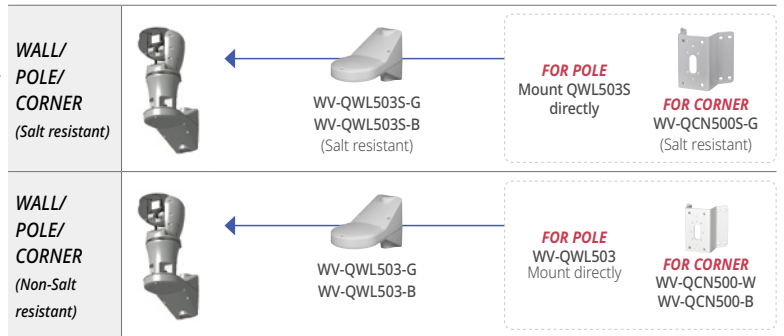


SALT RESISTANT

WV-X67711-Z3L3	Gray
WV-X67710-Z3-3, Z3L3 WV-X67710-Z3-1, Z3L1	Gray Black
WV-X67701-Z3L3	Gray
WV-X67700-Z3-3, Z3L3	Gray
WV-X67311-Z4L3	Gray
WV-X67310-Z4-3, Z4L3 WV-X67310-Z4-1, Z4L1	Gray Black
WV-X67301-Z4L3	Gray
WV-X67300-Z4-3, Z4L3	Gray

ACCESSORIES

PICTURE	SKU DESCRIPTION	ALL
	WV-QCA502 Multi cable (Ext I/O, Audio, Relay)	✓



Security Camera Accessory Chart

OUTDOOR PTZ CAMERAS



OUTDOOR

WV-S66700-Z3, Z3L	White
WV-S66700-Z3N, Z3LN	White
WV-S66600-Z3, Z3L	White
WV-S66600-Z3N, Z3LN	White
WV-S66300-Z4, Z4L	White
WV-S66300-Z4N, Z4LN	White
WV-S66300-Z3, Z3L	White
WV-S66300-Z3N, Z3LN	White

SALT RESISTANT

WV-X66700-Z3S, Z3LS	White
WV-X66700-Z3K, Z3LK	White
WV-X66600-Z3S, Z3LS	White
WV-X66600-Z3K, Z3LK	White
WV-X66300-Z4S, Z4LS	White
WV-X66300-Z4K, Z4LK	White
WV-X66300-Z3S, Z3LS	White
WV-X66300-Z3K, Z3LK	White

ACCESSORIES

PICTURE	SKU DESCRIPTION	ALL
	WV-QDC508G Smoked Dome	✓
	WV-QDC508CN Clear Dome with ClearSight Coating	✓
	WV-QDC508C Clear Dome	✓
	WV-QCA501A Multi Cable (Ext I/O, Audio, DC)	✓
	WJ-PU201/G PoE++ injector	✓
	WJ-PU201F/G PoE++ injector	✓

WALL/ POLE/ CORNER		WV-QWL502-W	FOR POLE Mount QWL502 directly	FOR CORNER WV-QCN500-W
		WV-QSR506-W (4-screw)	WV-QWL501-W	FOR POLE WV-QPL500-W FOR CORNER WV-QCN500-W
		WV-QSR506-W (4-screw)	WV-QWL506-W	FOR POLE WV-QPL500-W FOR CORNER WV-QCN500-W
HANGING		WV-QSR506-W (4-screw)	WV-QCL501-W	
CEILING		WV-QJB505-W	WV-Q105A (Indoor only. If needed.)	
RECESSED		WV-QEM505-W (Indoor only)		
WALL/ POLE/ CORNER		WV-QSR506S-W (4-screw) (Salt resistant)	WV-QWL501S-W (Salt resistant)	FOR POLE WV-QPL500S-W (Salt resistant) FOR CORNER WV-QCN500S-W (Salt resistant)
		WV-QSR506S-W (4-screw) (Salt resistant)	WV-QWL506S-W (Salt resistant)	FOR POLE WV-QPL500S-W (Salt resistant) FOR CORNER WV-QCN500S-W (Salt resistant)
HANGING		WV-QSR506S-W (4-screw) (Salt resistant)	WV-QCL501S-W (Salt resistant)	

Note

OUTDOOR PTZ CAMERAS



OUTDOOR

WV-S65340-Z4, Z4N, Z4G	White
WV-S65340-Z4N1	Black
WV-S65340-Z2, Z2N, Z2G	White
WV-S65340-Z2N1	Black

SALT RESISTANT

WV-S65340-Z4K	White
WV-S65340-Z2K	White

ACCESSORIES

PICTURE	SKU DESCRIPTION	ALL
	WV-QDC503G Smoked Dome	✓
	WV-QDC503C Clear Dome	✓
	WV-QDC503CN Clear Dome with ClearSight coating	✓
	WJ-PU201/G PoE++ injector	✓
	WJ-PU201F/G PoE++ injector	✓

WALL/ POLE/ CORNER					
HANGING					
CEILING					
WALL/ POLE/ CORNER					
HANGING					

Note

Security Camera Accessory Chart

OUTDOOR PTZ CAMERAS



OUTDOOR

WV-S65501-Z1, Z1G	White
WV-S65302-Z2, Z2G	White
WV-S65302-Z2-1	Black
WV-S65301-Z1, Z1G	White
WV-S65301-Z1-1	Black
WV-S65300-ZY, ZYG	White
WV-U65302-Z2, Z2G	White
WV-U65301-Z1, Z1G	White
WV-U65300-ZY, ZYG	White

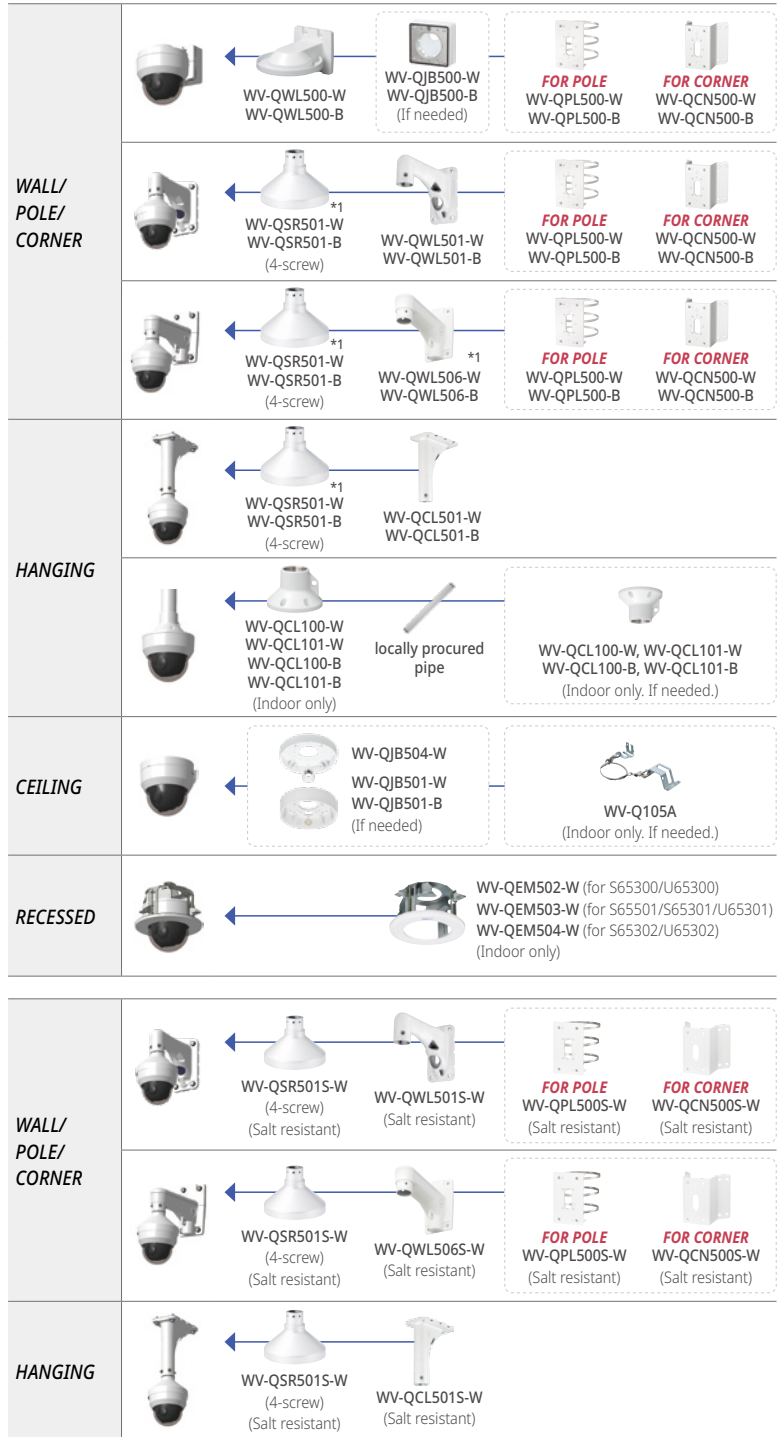
SALT RESISTANT

WV-S65301-Z1S	White
---------------	-------

ACCESSORIES

PICTURE	SKU DESCRIPTION	S65302, S65501, S65301 U65302, U65301	
		S65302, S65501, U65302	S65301, U65301
	WV-QDC502G Smoked Dome	✓	
	WV-QDC502C Clear Dome	✓	
	WV-CW7S Smoked Dome		✓
	WV-QDC504C Clear Dome		✓
	WV-CW7SN Smoked Dome with ClearSight Coating		✓
	WV-CW7CN Clear Dome with ClearSight Coating		✓
	WV-QCA500A RJ45 Ethernet cable	✓*	✓
	WV-QCA501A Multi cable (Ext I/O, Audio, DC)	✓	✓

* Included in camera



Note

INDOOR PTZ CAMERAS



INDOOR

WV-S61702-Z3	White
WV-S61602-Z3	White
WV-S61302-Z4	White

ACCESSORIES

PICTURE	SKU DESCRIPTION	ALL
	WV-QDC100G-W Smoked Dome	<input checked="" type="checkbox"/>
	WV-QDC100C-W Clear Dome	<input checked="" type="checkbox"/>

WALL/ POLE/ CORNER	 ← WV-QWL100-W ← FOR POLE WV-QPL500-W FOR CORNER WV-QCN500-W
HANGING	 ← WV-QCL100-W WV-QCL101-W ← locally procured pipe ← WV-QCL100-W, WV-QCL101-W (If needed)
CEILING	 ← WV-Q105A (If needed)
RECESSED	 ← WV-QEM101-W

INDOOR PTZ CAMERAS



INDOOR

WV-S61501-Z1	White
WV-S61301-Z2	White
WV-U61301-Z2	White
WV-S61301-Z1	White
WV-S61300-ZY, ZYG	White
WV-U61301-Z1	White
WV-U61300-ZY, ZYG	White

ACCESSORIES

PICTURE	SKU DESCRIPTION	S61501 S61301 U61301	S61300 U61300
	WV-QDC102C Clear Dome	<input checked="" type="checkbox"/>	
	WV-CF55A Smoked Dome		<input checked="" type="checkbox"/>
	WV-QDC101C Clear Dome	<input checked="" type="checkbox"/>	
	WV-QAT100 Inner Cover	<input checked="" type="checkbox"/>	

WALL/ POLE/ CORNER	 ← WV-QWL500-W ← WV-QJB500-W (If needed) FOR POLE WV-QPL500-W
	 ← Clear Dome ← Smoked Dome S61501/S61301/U61301 only: WV-QWD100C-W Clear Dome WV-QWD100G-W Smoked Dome FOR CORNER WV-QCN500-W
HANGING	 ← WV-QCL100-W WV-QCL101-W ← locally procured pipe ← WV-QCL100-W, WV-QCL101-W (If needed)
CEILING	 ←
	 ← Clear Dome ← Smoked Dome S61501/S61301/U61301 only: WV-QCD100C-W Clear Dome WV-QCD100G-W Smoked Dome ← WV-Q105A (If needed)
RECESSED	 ← Clear Dome ← Smoked Dome S61501/S61301/U61301 only: WV-QED100C-W Clear Dome WV-QED100G-W Smoked Dome
	 ← S61300/U61300 only: WV-QEM501-W

Security Camera Accessory Chart

CORNER CAMERA



OUTDOOR

WV-X25580-F2LN2

Silver



ACCESSORIES

PICTURE	SKU DESCRIPTION	ALL
	WV-QDC509CN Clear Dome with ClearSight Coating	✓
	WV-QCA500A RJ45 Ethernet cable	✓
	WV-QCA501A Multi cable (Ext I/O, Audio, DC)	✓

OUTDOOR DOME CAMERAS

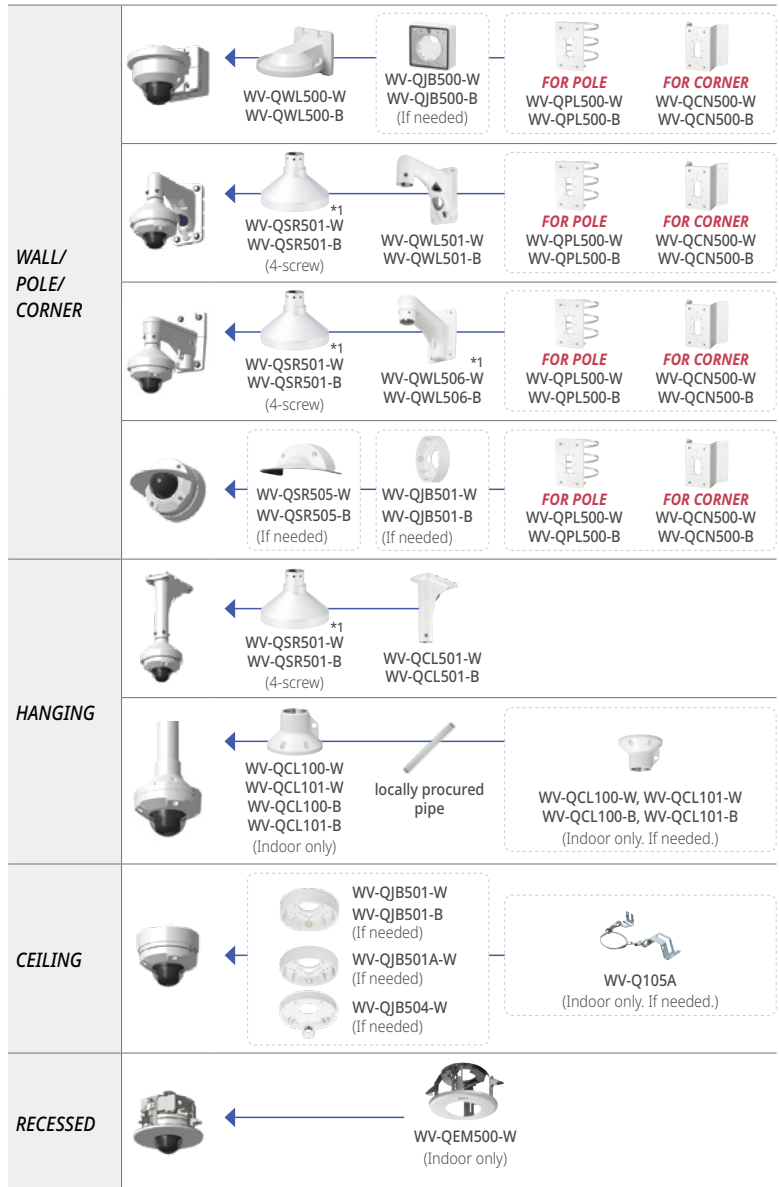


OUTDOOR

WV-X25700-V2LN, WV-X25600-V2LN WV-X25500-V3LN, WV-X25300-V3LN	White
WV-S25700-V2L, V2LN, V2LG WV-S25700-V2LN1	White Black
WV-S25600-V2L, V2LN, V2LG	White
WV-S25500-V3L, V3LN, V3LG, F6L, F3L WV-S25500-V3LN1	White Black
WV-S2536LA, LNA, LGA, LGNA	White
WV-U25751-V3L, WV-U25551-V3L, WV-U25502-V3L WV-U25351-V3L, WV-U25302-V3L	White
WV-U2542LA, WV-U2532LA	White

ACCESSORIES

PICTURE	SKU DESCRIPTION	OTHERS	U25502 U25302 U2542 U2532
	WV-CW7S Smoked Dome	✓	✓
	WV-QDC504C Clear Dome	✓	✓
	WV-CW7SN Smoked Dome with ClearSight Coating	✓	✓
	WV-CW7CN Clear Dome with ClearSight Coating	✓	✓
	WV-QCA500A RJ45 Ethernet cable	✓	
	WV-QCA501A Multi cable (Ext I/O, Audio, DC)	✓	

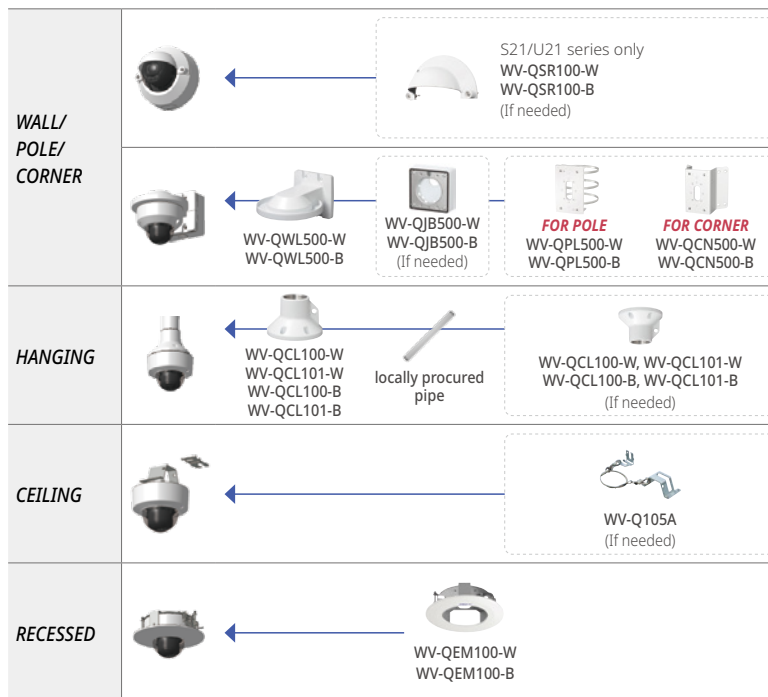


INDOOR DOME CAMERAS



INDOOR

WV-X22700-V2L, WV-X22600-V2L WV-X22500-V3L, WV-X22300-V3L	White
WV-S22700-V2L, V2LG WV-S22700-V2L1	White Black
WV-S22600-V2L, V2LG	White
WV-S22500-V3L, V3LG, F6L, F3L WV-S22500-V3L1	White Black
WV-S2236LA, LGA WV-S2236LA-B, LGA-B	White Black
WV-S2136LA, LGA WV-S2136LA-B, LGA-B	White Black
WV-S2136A, WV-S2136GA WV-S2136A-B, WV-S2136GA-B	White Black
WV-U21550-V3L, WV-U21501-V3L WV-U21350-V3L, WV-U21301-V3L	White
WV-U2142LA, WV-U2132LA, WV-U21300-V2L	White



ACCESSORIES

PICTURE	SKU DESCRIPTION	OTHERS	S2136 U21550 U21501 U21350 U21301 U2142 U2132 U21300
	WV-CR1S Smoked Dome	✓	
	WV-QDC200C Clear Dome	✓	
	WV-CF5SA Smoked Dome		✓
	WV-QDC101C Clear Dome		✓

Note

Security Camera Accessory Chart

COMPACT DOME CAMERAS



OUTDOOR

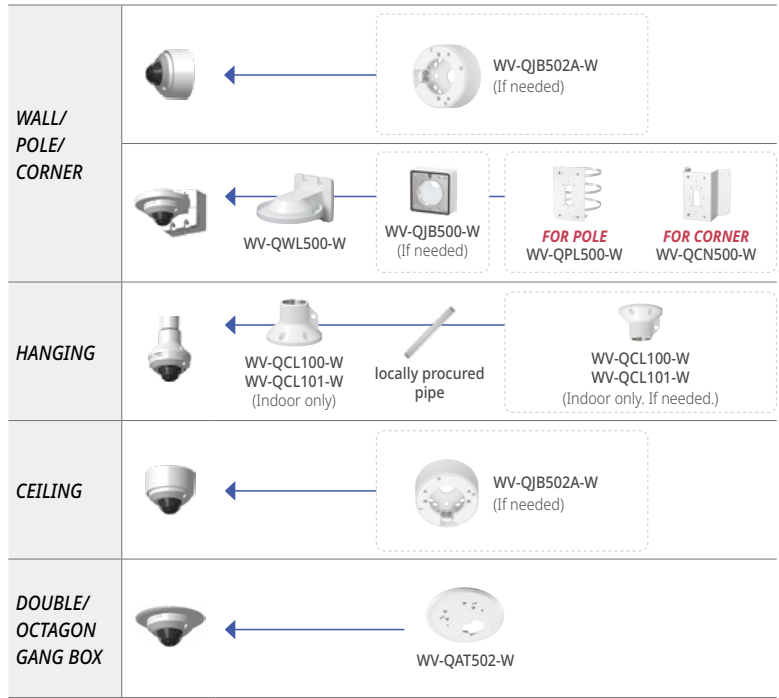
WV-U25550-F3L, WV-U25501-F3L	White
WV-U25350-F3L, WV-U25301-F3L	
WV-U2540LA, U2530LA	White

INDOOR

WV-U22750-F3L, WV-U22550-F3L, WV-U22501-F3L	White
WV-U22350-F3L, WV-U22301-F3L	
WV-U2140LA, WV-U2130LA	White

ACCESSORIES

PICTURE	SKU DESCRIPTION	OTHERS	U25550 U25350 U22750 U22550 U22350	U25501 U25301 U22501 U22301
	WV-QDC500S Smoked Dome	✓		
	WV-QDC500C Clear Dome	✓		
	WV-QDC510G Smoked Dome		✓	✓
	WV-QDC510C Clear Dome		✓	✓
	WV-QCA504 Audio Cable		✓	



HIGH ZOOM BULLET CAMERA

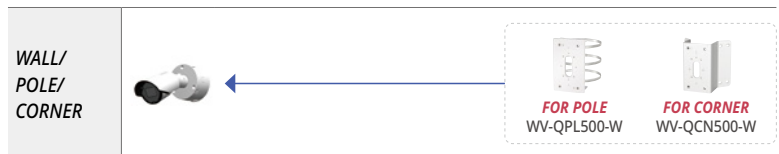


OUTDOOR

WV-X15701-Z3L, Z3LN	White
WV-X15502-Z1L, Z1LN	White
WV-X15501-Z3L, Z3LN	White
WV-X15501-Z1L, Z1LN	White
WV-X15302-Z1L, Z1LN	White
WV-X15301-Z1L, Z1LN	White
WV-S15701-Z3L, Z3LN	White
WV-S15501-Z3L, Z3LN	White
WV-S15501-Z1L, Z1LN	White
WV-S15301-Z1L, Z1LN	White

ACCESSORIES

PICTURE	SKU DESCRIPTION	ALL
	WV-QCA500A RJ45 Ethernet cable	✓ * Included in camera
	WV-QCA501A Multi cable (Ext I/O, Audio, DC)	✓
	WJ-PU201 PoE++ injector	✓



OUTDOOR BULLET CAMERAS



OUTDOOR

WV-X15700-V2L, V2LN WV-X15600-V2L, V2LN WV-X15500-V3L, V3LN WV-X15300-V3L, V3LN	White
WV-S15700-V2L, V2LN	White
WV-S15600-V2L, V2LN	White
WV-S15500-V3L, V3LN, F6L, F3L WV-S15500-V3LN1	White Black
WV-S1536LA, LNA WV-S1536LA-B, LNA-B	White Black
WV-U15750-V3L, WV-U15550-V3L, WV-U15501-V3L WV-U15350-V3L, WV-U15301-V3L	White
WV-U1542LA, WV-U1532LA	White

SALT RESISTANT

WV-S15700-V2LK	White
WV-S15500-V3LK	White
WV-S1536LNSA	White

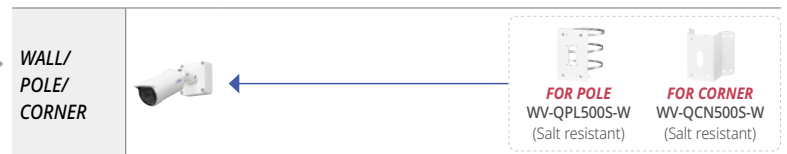
ACCESSORIES

PICTURE	SKU DESCRIPTION	OTHERS
	WV-QCA500A RJ45 Ethernet cable	U15750 U15550 U15501 U15350 U15301 U1542 U1532
	WV-QCA501A Multi cable (Ext I/O, Audio, DC)	

X-series/S-series



U-series



INDOOR BOX CAMERAS



INDOOR

WV-S1136A	White
WV-U11550-V3, WV-U11501-V3 WV-U11350-V3, WV-U11301-V3	White
WV-U1142A, U11300-V2, U1132A	White
WV-U11301-F3	White
WV-U1130A	White



Security Camera Accessory Chart

OUTDOOR FISHEYE CAMERAS



OUTDOOR

WV-X45701-F1L, F1LM	White
WV-X45501-F1L, F1LM	White
WV-S45700-F1L, WV-S45500-F1L	White
WV-S4576LA, LMA	White
WV-S4556LA, LMA	White

ACCESSORIES

PICTURE	SKU DESCRIPTION	S45700 S45500 S4576 S4556	X45701 X45501
	WV-QDC507C Clear Dome	✓	
	WV-QDC511C Clear Dome		✓
	WV-QCA503 Multi-cable		✓

WALL/ POLE/ CORNER		← WV-QJB507-W	FOR POLE WV-QPL500-W	FOR CORNER WV-QCN500-W	
		← WV-QWL500-W	WV-QJB500-W (If needed)	FOR POLE WV-QPL500-W	FOR CORNER WV-QCN500-W
		← WV-QSR501-W (4-screw)	WV-QWL501-W	FOR POLE WV-QPL500-W	FOR CORNER WV-QCN500-W
		← WV-QSR501-W (4-screw)	WV-QWL506-W	FOR POLE WV-QPL500-W	FOR CORNER WV-QCN500-W
HANGING		← WV-QSR501-W (4-screw)	WV-QCL501-W		
		← WV-QCL100-W WV-QCL101-W WV-QCL100-B WV-QCL101-B (Indoor only)	locally procured pipe	WV-QCL100-W, WV-QCL101-W WV-QCL100-B, WV-QCL101-B (Indoor only. If needed.)	
CEILING		← WV-QJB501-W (If needed) S4576LA/S4556LA: Standard accessory	WV-QJB501A-W (If needed)	WV-Q105A (Indoor only. If needed.)	

INDOOR FISHEYE CAMERAS



INDOOR

WV-X41701-F1, WV-X41501-F1	White
WV-S41700-F1, WV-S41500-F1	White
WV-S4176A	White
WV-S4156A	White

ACCESSORIES

PICTURE	SKU DESCRIPTION	X41701 X41501
	WV-QCA503 Multi-cable	✓

WALL/ POLE/ CORNER		← S4176A, S4156A only: WV-QCL102-W (If needed)		
		← WV-QJB507-W		
		← WV-QWL500-W	WV-QJB500-W (If needed)	FOR POLE WV-QPL500-W
HANGING		← WV-QCL100-W WV-QCL101-W	locally procured pipe	WV-QCL100-W, WV-QCL101-W (Indoor only. If needed.)
		← WV-QCL102-W	FOR CEILING WV-QCL102-W	FOR LIGHT RAIL WV-QLR100-W (X41501/X41701 are not compatible.)
CEILING		← WV-Q105A (If needed)		

COMPACT DOME CAMERAS



OUTDOOR

WV-X35402-F2L, F2LM
WV-X35302-F2L, F2LM

White

OUTDOOR

WV-S35402-F2L, F2LG
WV-S35302-F2L, F2LG

White

WV-S35402-F2L1
WV-S35302-F2L1

Black

WV-U35401-F2L, F2LG
WV-U35301-F2L, F2LG

White

INDOOR

WV-S32402-F2L, F2LG
WV-S32302-F2L, F2LG

White

WV-S32402-F2L1
WV-S32302-F2L1

Black

WV-U31401-F2L, F2LG
WV-U31301-F2L, F2LG

White

ACCESSORIES

PICTURE	SKU DESCRIPTION	ALL
	WV-CW6SA Smoked Dome	✓
	WV-QDC50C Clear Dome	✓

WALL		 WV-QJB502A-W WV-QJB502A-B (If needed, U31401/U31301 are not compatible.)
CEILING		 WV-QJB502A-W WV-QJB502A-B (If needed, U31401/U31301 are not compatible.)
WALL/ POLE/ CORNER		 WV-QJB502A-W WV-QJB502A-B (If needed, U31401/U31301 are not compatible.)
	 *2	 WV-QWL500-W WV-QWL500-B WV-QJB500-W (If needed) FOR POLE WV-QPL500-W WV-QPL500-B FOR CORNER WV-QCN500-W WV-QCN500-B
HANGING	 *2	 WV-QCL100-W WV-QCL101-W WV-QCL100-B WV-QCL101-B (Indoor only) locally procured pipe WV-QCL100-W, WV-QCL101-W WV-QCL100-B, WV-QCL101-B (Indoor only. If needed.)
CEILING		 WV-QJB502A-W WV-QJB502A-B (If needed, U31401/U31301 are not compatible.)
DOUBLE/ OCTAGON GANG BOX	 *2	 WV-QAT502-W

INDOOR COMPACT CAMERA



INDOOR

WV-S71300A-F3

White

WALL/ HANGING		 WV-QCL102-W
LIGHT RAIL		 WV-QLR100-W

Notes:

Typical mounting combinations are shown.

For a complete list of compatible mounts and accessories, please refer to the Accessory Selector: <https://i-pro.com/selector/accessory/>

*1 In addition to this mount, other mounting brackets compatible with locally sourced pipes/brackets are also available.

*2 WV-X35xxx models are not compatible with this combination.

Trademarks and registered trademarks

- HDMI, the HDMI logo and High-Definition Multimedia Interface are trademarks or registered trademarks of HDMI Licensing, LLC.
- ONVIF is a trademark of ONVIF, Inc.
- GlobalSign and the GlobalSign Logo are registered trademarks of GMO GlobalSign K.K.
- The SD, SDHC, miniSDHC, microSDHC, SDXC and microSDXC Logos are trademarks of SD-3C LLC.
- iPad and iPhone are trademarks of Apple Inc., registered in the U.S. and other countries.
- Android is a trademark of Google LLC.
- All other trademarks identified herein are the property of their respective owners.

Important

- Safety Precautions : Carefully read the Basic Information, Installation Guide and Operating Instructions before using this product.
- i-PRO Co., Ltd. cannot be held responsible for the performance of the network and/or other manufacturers' products used on the network.
- The same catalog is provided for all countries. Some accessories may not be available in some countries.

Security Cautions

- When using the products in this catalog, take appropriate measures to avoid the following security breaches:
 - Disclosure of private information via the products.
 - Unauthorized use of products by a third party.
 - Interference or suspension of use of products by third party.
 - All pictures are simulated.
 - Design and specifications are subject to change without notice.



i-PRO Co., Ltd.

https://i-pro.com/products_and_solutions/surveillance

(2B-017NA)