

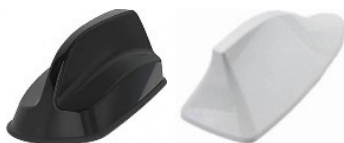


i-PRO In-Car Video & Body-Worn Camera Antennas



ICV/BWC Antennas

i-PRO Americas provides a variety of antennas compatible with our in-car video and body-worn camera systems. Tested to comply with FCC standards, the antennas are guaranteed to perform successfully with your i-PRO video system.



VPU4000 6-in-1 Antenna

IPS-ICV4-ANT-BL (Black)
IPS-ICV4-ANT-WH (White)
Standard 6-in-1 for handling all the antennas required for the VPU4000. Includes:

- 4-Wifi
- 1-Bluetooth
- 1-GPS (SMA)
- 6.77"L x 2.4"W x 1.85"H
- Bolt-on
- Black



VPU4000 6-in-1 Antenna (Alternative)

IPS-ICV4-ANT2-BK (Black)
i-PRO ICV4000 symmetrical fin antenna for VPU4000

- 4 WLAN
- 1 BT
- 1 GPS
- 7.04"L x 2.48"W x 1.69"H
- Bolt-on
- Black



VPU4000 3-in-1 Antenna

IPS-ICV-ANT2W1G-BL (Black)
IPS-ICV-ANT2W1G-WH (White)
Alternate 3-in-1 when only 2 WiFi leads and GPS are required. Slim design includes:

- 2-Wifi
- 1-GPS (SMA)
- This antenna can also be used for ICVMK3 Wifi
- 7.1"L x 1.6"W x 1.5"H
- Bolt-on
- 17' Lead
- Black or White



Bluetooth Window Antenna

IPS-ICV-ANT-1BT-BK (Black)

- Mini Bluetooth fin antenna for internal glass mounting only.
- 1-BT Lead (SMA)
- This antenna can also be used for the VPU4000 BT or Common Trigger Box (CTB)
- Extended BT range with 360 coverage, no roof drilling required.
- 2.4GHz for BT only
- 3"L x 1.5"W x 2.2"H
- 3M Tape
- 17' Lead
- Black



ICV4 Magnetic GPS Antenna (SMA)

IPS-ICV-GPSSMA (Black)

- Magnetic GPS antenna with SMA connector for VPU4000
- 1.4"L x 1.7"W x 0.4"H
- Magnetic
- 17' Lead
- Black



GT5 to SMA Adapter Cable

IPS-ICV-ANT-GT5

- GT5 to SMA adapter cable for adapting the VPU4000 GPS port (SMA) to an older MK3 GPS antenna (GT5-1PP Connector)
- 6" Lead
- Black



ICV MK3 GPS Magnetic Antenna

N1JYYYY00054 GPS Magnetic Antenna (Black) Service Part
ARB-VMP8729 GPS Flat Mounting PAD (Black) Service Part

- ICV MK3 GPS antenna with GT5-1S connector
- 17' Lead
- Black

[Learn More](#)

i-pro.com/us/en/publicsafety

©2024 i-PRO Americas Inc. All rights reserved. R011924

i-PRO