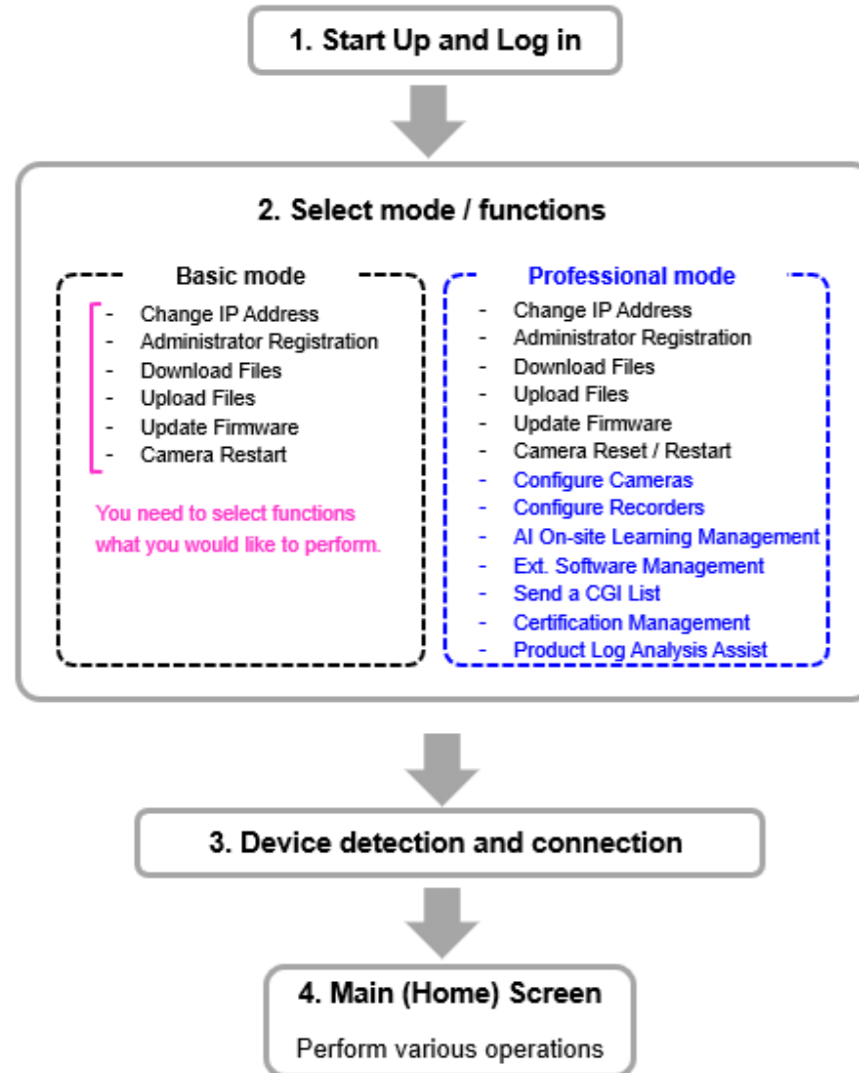


i-PRO Configuration Tool

Operation Flow



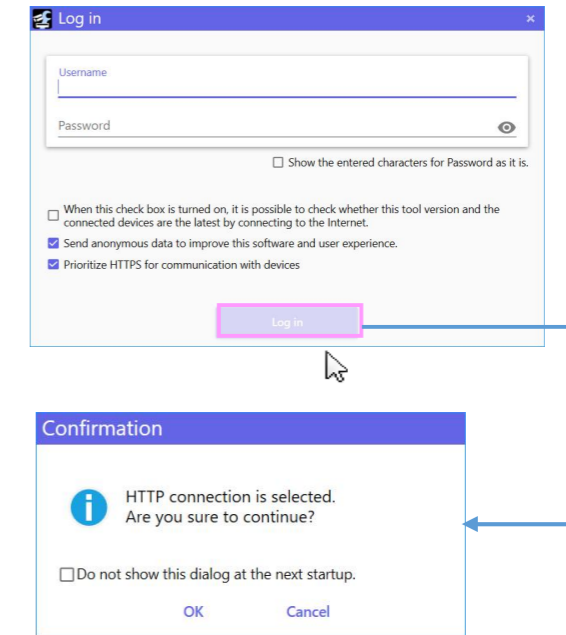
1. Start Up and Log in

Start Menu on Windows OS -> [i-PRO] -> [i-PRO Configuration Tool]



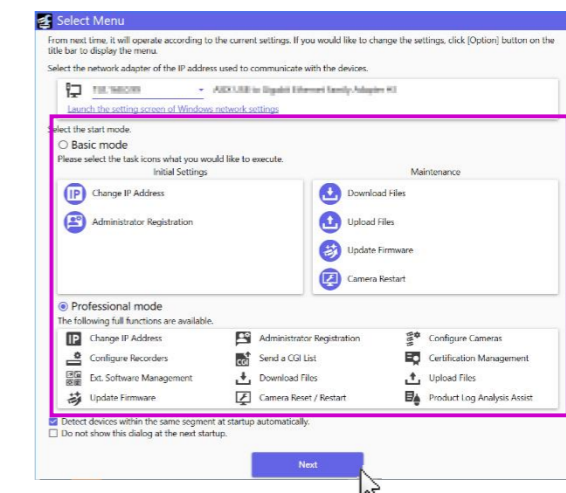
If "Prioritize HTTPS for connection with devices" checkbox is unchecked, a "Confirmation" screen will be displayed. The settings for the "Prefer HTTPS for connecting to devices" checkbox are saved in the "Option" settings.

By using the HTTPS function, you can encrypt the access to the camera and increase the security of communication.



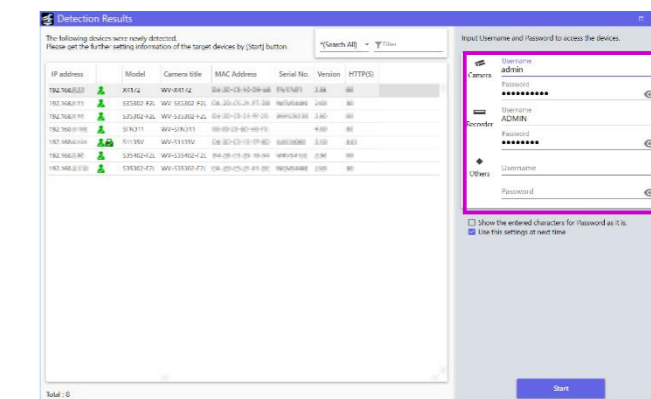
2. Select mode / functions

Select mode / click the function what you would like to operate and press "Next".



3. Device detection and connection

To connect to the device, you need to enter the username and password of the device.



4. Main (Home) Screen

(a) <Basic mode / Professional mode> common function

- (i) [Hamburger Icon] Switch between icon display and detailed display of the operation menu.
- (ii) [Select Menu] Select function menu.
- (iii) [Change IP Address] Set the IP address of the device.
- (iv) [Administrator Registration] Perform the initial settings of the device administrator.
- (v) [Download Files] Perform device settings / log file download
(You can also create a configuration report)
- (vi) [Upload Files] Upload the setting file to the device.
- (vii) [Update Firmware] Update the firmware on the device.
- (viii) [Camera Reset / Restart] Reset Restart the cameras.

(b) <Professional mode> function

- (i) [Configure Cameras] Set multiple cameras from one unit.
- (ii) [Configure Recorders] Configure recorder settings (offline)
(Use the basic mode "Upload Files" to send settings to the device.)
- (iii) [AI On-site Learning Management] Manage AI On-site Learning
- (iv) [Ext. Software Management] Configure extension software / license settings
- (v) [Send a CGI List] Send CGI list to device
- (vi) [Certificate Management] Manage certificate for devices.
- (vii) [Audiofile List Management] Manage Audiofile List
- (viii) [Camera Reset / Restart] Initialize / restart the cameras.
- (iv) [Product Log Analysis Assist] Assist product log Analysis.

(c) Operation menu



- (i) (ii) (iii) (iv) (v) (vi)

- (i) [Auto Device Detection] Devices on your own / other subnets can be detected and added
- (ii) [Manual Device Addition] Add cameras (offline)
- (iii) [Reload] Update the device list / thumbnail image view / Update the version information of the device and the Extension software.
- (iv) [Credential Settings] Change Username and Password to access the devices.
- (v) [Delete Devices] Delete the devices specified in the device list.
- (vi) [Notice] If there is notification, it will be displayed at the bottom right of the screen.

Please note that the function for changing the settings of devices such as cameras and recorders is in "professional" mode so that you will not accidentally change the detailed settings of your device.

The screenshot shows the 'Main' screen of the i-PRO Configuration Tool. It features a 'Select Menu' on the left with options like 'Change IP Address', 'Administrator Registration', 'Configure Cameras', etc. The main area displays a table of registered devices with columns for Message, IP address, Model, and Camera title. An error message is visible: 'Administrator of the device is not registered. Register Administrator user:'. A red arrow points to this message, and a red box highlights the text 'Right clicking the text in red will display the menu to resolve the error.'

- (v) Download Files
- (vi) Upload Files
- (vii) Audiofile List Management
- (viii) Update Firmware
- (ix) Camera Reset / Restart
- (x) Product Log Analysis Assist

Item	Description
Common to	Waiting order to start communication with target device.
Communications	Communication with target device is in progress.
	Communication with the target device successfully.
	Communication with the target device failed.
Administrator Registration Status	Administrator is already registered devices.
	Administrator is not registered devices.
	Administrator state unknown devices.(Uncommunicated device)
Failover	The operation is currently running in the failover mode.
Communication	Devices under HTTPS communication status.
New Firmware/ Application	New version of the firmware is available for the target device.
	New version of the AI Application is available for the target device.

(d) Sub menu of "Ext. Software Management"

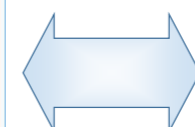
- (i) [App. Installation/Update] Install / update the Ext. Software
Download the latest version of "Extension software Package *2 and unzip it. Specify the unzipped folder in the Folder field.
- (ii) [Issuance of Reg. Key] Issue a Reg. Key (Registration Key)
Issue a Reg. Key by entering the obtained Activation Key No./ Registration ID and enter the User ID/Password of Key Management System *3.
- (iii) [Registration of Reg. Key] Register the issued the Reg. Key
- (iv) [App. Settings] Configure the application settings
- (v) [Remove App./Reg. Key] Delete the application / Reg. key
- (vi) [Configure Docker extension Module for i-PRO] Configure Docker extension Module for i-PRO
- (vii) [Configure AI Processing Relay] Configure AI Processing Relay

*2 : Please obtain the Extension Software Package from the following URL.

https://i-pro.com/products_and_solutions/en/surveillance/learning-and-support/tools/ict/extension-software-package

*3 : This function will be not available in case of maintenance of Key Management System or network failure.

Operation menu will be shown on the right side of the main screen.



Professional mode

Basic mode

Download Files

- Download Files
It is possible to download the selected files. When [Start] button is clicked, Download Files will be started. Are you sure to continue?
* Please use the "Log Files" only when the manufacturer requests to send the log.
- Configuration Files
 JPEG still images (For cameras only)
- Log Files
- Scene file (Camera)
- Create a new Report of the Device List and Image View.

Upload Files

- Select "Category" of the devices to which the configuration files is to be uploaded. When [Start] button is clicked, Upload Files will be started. Are you sure to continue?
- Category: Recorder Configuration File
- File name:
- Overwrite network settings

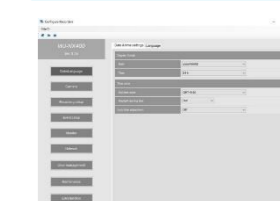
Update Firmware

- Please select the folder where the firmware is stored.
- Folder:

Configure Cameras

- Camera title: WV-S1135V
- Camera title on screen display: Off
- Camera title on screen: Off
- Date/time display setting: 24h
- Date/time position: Upper left
- Camera title position: Upper left
- Language: Auto
- Image rotation: 0°(Off)
- Upside-down:
- Set PC time to the camera:
- Date/time display format: Mmm/DD/YYYY
- Summer Time: Out
- Start Date/time: Jan 1st Sun
- End Date/time: Jan 1st Sun

Configure Recorders



ONVIF Conformant Device

ONVIF® conformant devices are displayed in the "ONVIF conformant Device" tab.

The following ONVIF compliant devices have been confirmed to work with this software.

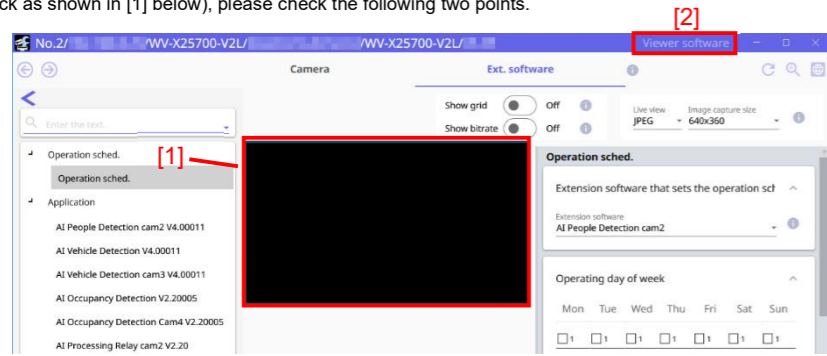
- AXIS: M1135, M3047-P, M3066-V, M5065, P1378, P1455-LE, Q1614
- Hanwha: PNO-A6081R, PND-A6081RV, QNB-6002, QNF-8010, XNF-8010R

Configure Recorders

If the recorder you are setting up is a WJ-NX200, WJ-HD616, or HJ-HD716, please select PAL(G) or NTSC(P) to use.

If the stream video is not displayed (black screen)

In case of Stream video is not displayed on the Expansion Software Settings screen. (If the screen remains black as shown in [1] below), please check the following two points.



1.The plug-in software installation status

Check that "Network Camera View 4S" (plug-in software) is shown on the control panel "Programs and Features". If it is not shown, click "Viewer Software" in the upper right corner [2] of the Camera Advanced Settings screen to install the plug-in software.

2.Windows Defender Firewall settings

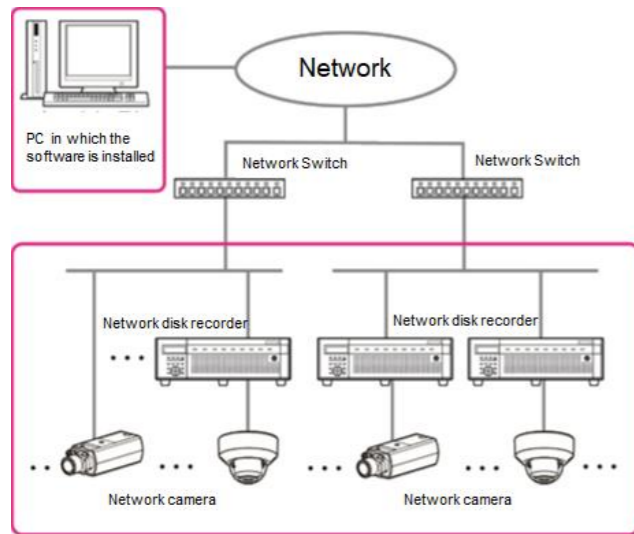
- If the video display may be restricted by the Windows firewall function, please follow the steps below.
- Open "Windows Defender Firewall" from the control panel
 - Select "Allow an app or feature through Windows Defender Firewall"
 - Please check "Public" for "iProAdvancedSettings.exe" in the list of "Allowed apps and features"

Preface

i-PRO Configuration Tool is the software that is designed to configure the settings of network disk recorders, network interface units (encoders) and network cameras using a PC via a network. This software is assumed to be used by system design and network management experts.

Refer to the provided "Available function list for each compatible device" (PDF file) about the compatible devices. Descriptions are based on the assumption that Microsoft® Windows® 11 Pro. In addition, the screens shown in this manual may include the previous versions within the scope of the explanation.

System configuration diagram



It is recommended to install this software on a PC that meets the following system requirements.

OS	Microsoft® Windows® 11 Pro *2, *3
CPU	Intel® Core™ i5 2.5 GHz or faster
Memory	8 GB or more
Required hard disk space	750 MB of disk space is necessary for installation of this software. *4 Microsoft® .NET Framework 4.8 and Microsoft® Visual C++ Redistributable Packages for Visual Studio 2005 and Visual Studio 2015-2022 are required to run this software. When they are not installed on a PC, additional 5 GB of disk space is necessary for installation.
Monitor *1	1,280 x 800 pixels or more, 24-bit True color or more
Network interface	Network interface card (100 Mbps or higher) must be installed. *5
Software	This software requires Microsoft® Edge WebView2. If you do not have it installed on your PC, please install it from the official website.

*1: When the display style or the font size is changed from the default, it may be possible that the layout of this software collapses. If the screen or image view of this software is not displayed correctly, change the display scaling to 100%.

*2: Operates in WOW64 (32-bit mode).

*3: Supports "Desktop Mode" only.

*4: It is necessary to prepare other disk space exclusively as storage for files downloaded from the devices in addition to the required disk space for installation of this software.

*5: The network settings on the PC must meet those of the network environment where the PC is connected.

Important:

- This software must be installed or started by an administrator of the PC. Otherwise, any problems will not be covered by the warranty.
- For installation, be sure to execute it from "setup.exe" with the zip file fully expanded. It is not possible to install from a state where the contents are only visible with the without extracting the zip file.
- Do not use other applications, especially heavy load types, while this software is running. Otherwise, the CPU overload and the shortage of resources will cause malfunction and insufficient performance.
- When using other tools with automatic device detection function (Easy IP Setup Tool [EasyIpSetup.exe], WV-ASM300 etc.) at the same time, the device detection function of this software cannot be used.
- Enter 1-byte alphanumeric characters for user names. If 2-byte characters are included, installation may fail.
- For Windows 10, communication will be via HTTPS/TLS1.2. Please note that communication via HTTPS/TLS1.3 is not supported.

Ports used in i-PRO Configuration Tool

The following table lists the default network ports used by i-PRO Configuration Tool. These ports must be allowed through firewall configurations.

Port number	Protocol	Send / Receive	Port usage
80	HTTP	Receive	Device communication.
443	HTTPS	Receive	Device communication.
7601	i-PRO	Receive	Maintenance of WV-CU980.
10669	Easy IP	Receive	Device detection and IP settings within the same segment.
10670	Easy IP	Send	Device detection and IP settings within the same segment.
(none)	ICMP	-	Confirmation of device connection and device detection across multiple network segments.

FQDN used in i-PRO Configuration Tool

The following table lists the FQDN used by i-PRO Configuration Tool. These FQDNs must be allowed to enable connections to external servers.

FQDN	Usage
https://www.psn-web.net/	Check the latest version of firmware and software.
http://ssbu-t.psn-web.net/	Check the latest version of i-PRO Configuration Tool. Notice to Users.
https://i-pro.com	Firmware and software download.
https://ipstest.i-pro.com	Send anonymous data to improve this software and user experience.
https://kms-business.i-pro.com	Connecting to Key Management System to obtain Registration Key.

Trademarks and registered trademarks

- Adobe and Reader are either registered trademarks or trademarks of Adobe Systems Incorporated in the United States and/or other countries.
- Microsoft, Windows, ActiveX and DirectX are either registered trademarks or trademarks of Microsoft Corporation in the United States and other countries.
- Intel and Core i5 are trademarks or registered trademarks of Intel Corporation or its subsidiaries in the United States and other countries.
- ONVIF is a registered trademark of ONVIF, Inc.

- Other names of companies and products contained in these operating instructions may be trademarks or registered trademarks of their respective owners

Copyright

Except for open source software licensed under GPL/LGPL and so on, distributing, copying, disassembling, reverse compiling, reverse engineering, and also exporting in violation of export laws of the software provided with this product, are all expressly prohibited.

Disclaimer of warranty

IN NO EVENT SHALL MATSUSHITA ELECTRIC INDUSTRIAL CO., LTD. BE LIABLE TO ANY PARTY OR ANY PERSON, EXCEPT FOR REPLACEMENT OR REASONABLE MAINTENANCE OF THE PRODUCT, FOR THE CASES, INCLUDING BUT NOT LIMITED TO BELOW:

- (1) ANY DAMAGE AND LOSS, INCLUDING WITHOUT LIMITATION, DIRECT OR INDIRECT, SPECIAL, CONSEQUENTIAL OR EXEMPLARY, ARISING OUT OF OR RELATING TO THE PRODUCT;
- (2) PERSONAL INJURY OR ANY DAMAGE CAUSED BY INAPPROPRIATE USE OR NEGLIGENT OPERATION OF THE USER;
- (3) UNAUTHORIZED DISASSEMBLE, REPAIR OR MODIFICATION OF THE PRODUCT BY THE USER;
- (4) ANY PROBLEM, CONSEQUENTIAL INCONVENIENCE, OR LOSS OR DAMAGE, ARISING OUT OF THE SYSTEM COMBINED BY THE DEVICES OF THIRD PARTY;

Open Source Software

This software uses open source software. The text of the license terms for each open source software is attached in the attached file "Open Source Software License List.pdf".

Collection of Usage Data

This software may collect data about utilization of this software and send it to i-PRO Co., Ltd. In particular, we use this data to improve our products and services. You can stop this data collection by unchecking "Send anonymous data to improve this software and user experience." checkbox.

The following is an example of the data collected by this software. We do not collect data about your personal information.

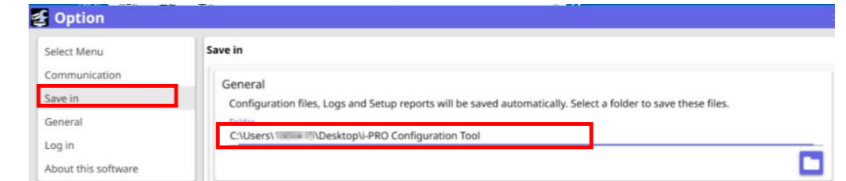
- Part number detected by this software and the operating status of each device
- Basic information of the PC on which this software is running (OS type / locale information / memory / screen size)
- Operating status of this software

Transfer/disposal

- Transfer this software according to the "Software License Agreement" to be displayed on the installation screen.
- When disposing of a PC on which this software is installed, please uninstall this software. Also, delete the following folders.

- C:\Program Files (x86)\i-PRO\iCT [1]
- C:\Users\%[user]%\AppData\Local\i-PRO\iCT [2]
- C:\Users\%[user]%\AppData\Roaming\i-PRO\iCT
- C:\Users\%[user]%\Desktop\i-PRO Configuration Tool Options, Save in, General, Folder [3]

1. When "Install for all users of this machine" is selected in the installation scope settings during installation.
2. When "Install just for you (User)" is selected in the installation scope settings during installation.
3. For Options, Save in, General, Folder, see the figure below.



- If the PC on which this software is installed or the storage device connected to the PC is to be passed to someone for transfer, disposal, repair and other reasons, pay careful attention to the data handled there, and it is your responsibility to transfer, dispose, and repair. When abandoning the storage media, it is recommended to destroy data physically after deleting it.

Network Security

As you will use this product connected to a network, your attention is called to the following security risks.

- (1) Leakage or theft of information through this product
- (2) Use of this product for illegal operations by persons with malicious intent
- (3) Interference with or stoppage of this product by persons with malicious intent

It is your responsibility to take precautions such as those described below to protect yourself against the above network security risks.

- Use this product in a network secured by a firewall, etc.
- If this product is connected to a network that includes PCs, make sure that the system is not infected by computer viruses or other malicious entities (using a regularly upgraded anti-virus program, anti-spyware program, etc.).

•Protect your network against unauthorized access by restricting users to those who log in with an authorized user name and password.

•Apply measures such as user authentication to protect your network against leakage or theft of information, including image data, authentication information (user names and passwords), alarm mail information, FTP server information.

About "Grid Display" function

The grid display function is for viewing angle adjustment for some extension software.

Appropriate object size is published on our website<Control No.: C0320>.



<https://i-pro.com/global/en/surveillance/training-support/support/technical-information>

Note: In case of using in Japan, please refer the following.

https://i-pro.com/products_and_solutions/ja/surveillance/learning-and-support/knowledge-base/technical-information

i-PRO Co., Ltd.

<https://www.i-pro.com/>

© i-PRO Co., Ltd. 2025

av1008-81