

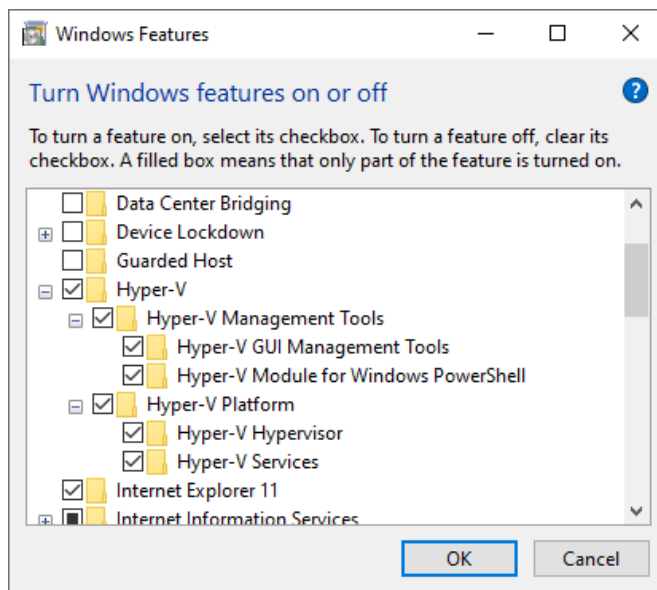
Installing docker on Windows 10 / 11

[Skip to end of metadata](#)

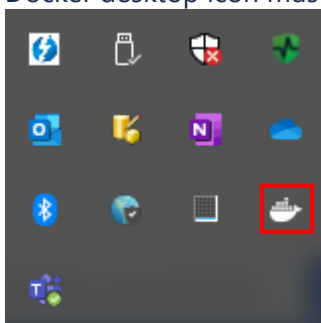
- Créée par [Alexandre Berton](#), dernière modification par [Christophe Fauconnet](#) le [2021-11-22](#)

[Go to start of metadata](#)

- Check on your bios that virtualization is enabled
- Install Hyper-V feature on your machine
Go to "Turn Windows features on or off" and check hyper-V



- Enable Hyper-V
open Powershell as an administrator and type the following commands;
`Enable-WindowsOptionalFeature -Online -FeatureName Microsoft-Hyper-V -All`
- Install docker desktop
<https://desktop.docker.com/win/main/amd64/Docker%20Desktop%20Installer.exe>
- Install WSL2 update
https://wslstorestorage.blob.core.windows.net/wslblob/wsl_update_x64.msi
Restart your machine
- Docker desktop icon must be displayed in your task bar



Right click on it and click on "switch to Windows containers..."

Wait until docker is restarting.

- Double click on docker icon on the task bar and goes to "settings" and "docker engine". Edit the content and replace it by:

```
{  
  "hosts": [ "tcp://0.0.0.0:2375" ]  
}
```

Apply and wait until docker engine is restarting

- Docker is now correctly configured on your machine to work with Genetec PIDS Gateway Service