

iii-PRO

Operating Instructions

Extension Software

(AI Privacy Guard for 360-degree fisheye)



Before attempting to connect or operate this software,
please read these instructions carefully and save this manual for future use.

The model number is abbreviated in some descriptions in this manual.

Contents

Introduction.....	3
Preface.....	3
Features	3
About the Operating Instructions.....	3
System requirements for a PC.....	4
Copyright	4
Disclaimer of warranty	4
Before using this product	5
Activation	6
Operation flow.....	6
Install the Software	6
How to obtain and register the Registration Key	8
Setup Procedure.....	11
Setup Procedure	11

Introduction

Preface

The Extension Software AI Privacy Guard for 360-degree fisheye (hereafter referred to as "this product") is software for more conveniently using the AI 360-degree network camera (option, hereafter referred to as the camera). By installing this product on the camera and registering a Registration key, you will be able to use the "AI Privacy Guard Function" that detects human figures and pixelates them.

Although this product can be set from the browser screen, this manual describes the procedures using the i-PRO Configuration Tool (hereinafter referred to as iCT)*1.

*1 Refer to the URL below for more information about iCT.

<https://i-pro.com/global/en/surveillance/tools/ict>

Important

- This product is necessary for each camera.
- See the URL below for information such as the models supported by this product, the software version, etc.

<https://i-pro.com/global/en/surveillance/training-support/support/technical-information>

<Control No.: C0103>

* For more information about the control number, refer to "About the Operating Instructions" on this page.

Features

Through AI processing, the software detects human figures within the camera images and pixelates or fills in that area, preventing individuals from being recognized.

(However recognition cannot be guaranteed to be 100% accurate.)

About the Operating Instructions

This manual explains how to register this product on the camera, the settings that must be configured before the product can be used and how to use the product. It is presumed that this product will be used by being registered on a camera, so be sure to read the operating instructions for the camera in use as well when using this product.

Depending on the model of camera used, the camera screens shown in this manual may differ from your own.

In this manual, a personal computer is referred to as a PC.

From the next page onwards, this manual will describe both "pixelation" and "filling in" as "pixelation."

"<Control No.: C****>" used in these documents should be used to search for information on our support website (<https://i-pro.com/global/en/surveillance/training-support/support/technical-information>) and will guide you to the right information.

Introduction (continued)

System requirements for a PC

For the requirements of PC which are used for settings refers to the Operating Instructions of a camera.

Copyright

Distributing, copying, disassembling, reverse compiling and reverse engineering of the software provided with this product are all expressly prohibited. In addition, exporting any software provided with this product violating export laws is prohibited.

Disclaimer of warranty

IN NO EVENT SHALL i-PRO Co., Ltd. BE LIABLE TO ANY PARTY OR ANY PERSON, EXCEPT FOR REPLACEMENT OR REASONABLE MAINTENANCE OF THE PRODUCT, FOR THE CASES INCLUDING BUT NOT LIMITED TO BELOW:

- (1) ANY LOSS OR DAMAGE, INCLUDING WITHOUT LIMITATION, DIRECT OR INDIRECT, SPECIAL, CONSEQUENTIAL OR EXEMPLARY, ARISING OUT OF OR RELATING TO THE PRODUCT;
- (2) INCONVENIENCE OR ANY LOSS ARISING WHEN IMAGES ARE NOT DISPLAYED, DUE TO ANY REASON OR CAUSE INCLUDING ANY FAILURE OR PROBLEM OF THE PRODUCT;
- (3) ANY PROBLEM, CONSEQUENTIAL INCONVENIENCE, OR LOSS OR DAMAGE, ARISING OUT OF THE SYSTEM COMBINED WITH THIRD PARTY DEVICES;
- (4) ANY CLAIM OR ACTION FOR DAMAGES BROUGHT BY ANY PERSON OR ORGANIZATION AS A PHOTOGRAPHED SUBJECT DUE TO VIOLATION OF PRIVACY CONCERNING A SURVEILLANCE CAMERA'S PICTURE OR SAVED DATA, FOR SOME REASON (INCLUDING USE WHEN USER AUTHENTICATION ON THE AUTHENTICATION SETTING SCREEN IS SET TO OFF), BECOMING PUBLIC OR BEING USED FOR ANY PURPOSE;
- (5) LOSS OF REGISTERED DATA CAUSED BY ANY FAILURE (INCLUDING INITIALIZATION OF THE PRODUCT DUE TO FORGOTTEN AUTHENTICATION INFORMATION SUCH AS A USER NAME AND PASSWORD).

Before using this product

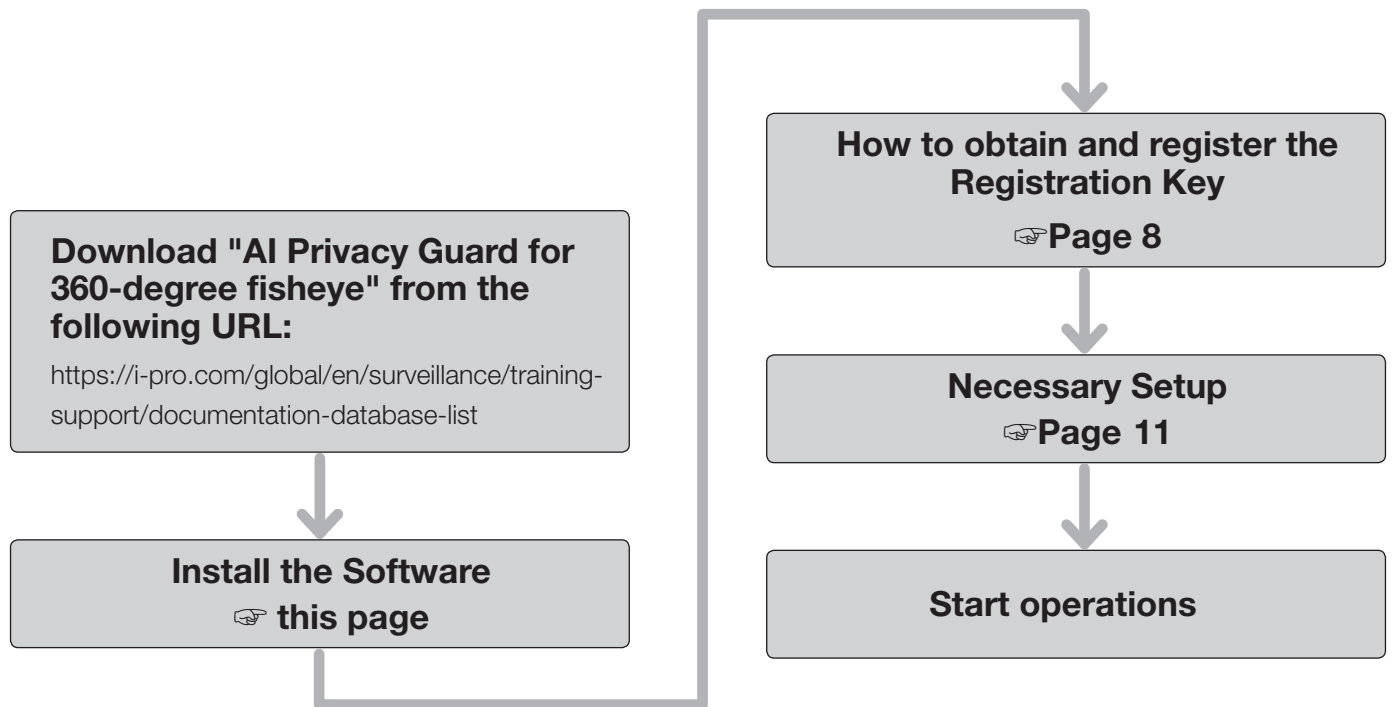
The camera on which this product (extension software) is installed should either be attached to a ceiling so that it is level with the ground, or attached to a wall so that it is perpendicular to the ground. Furthermore, to increase the accuracy of detection of the subjects filmed, we recommend that cameras fixed to the ceiling be installed at a height of 2.5m - 5.0m.

Pixelation may not be possible in the following cases.

- The target figure is out of focus.
 - The target figure is blurry.
 - The target figure is either overexposed or blacked out.
 - There is little difference in luminance (difference in brightness) between the background and the subject of filming.
 - The brightness of the image is low e.g., at night.
 - The target figure is too small or too large.
 - The target figure is lying down or collapsed.
 - The camera lens is dirty or covered by water droplets.
 - If the density of persons shown in the camera is high (estimate: more than 5 persons/m²), it may not be possible to pixelate all of them.
 - Only part of the target person is visible because they are hidden by a privacy zone or another filming subject. (estimate: 2/3rds or less of the body above the shoulders is shown)
 - The camera is shaking.
-
- Pixelation may not be possible if the target is in a position where his/her face is not shown, such as directly under the camera in the case of a ceiling-mounted camera.
 - If there are too many people appearing on camera (estimate: 100 persons or more), it may not be possible to pixelate all of them.
 - It may not be possible to pixelate some body parts, e.g., legs or arms.
 - Pixelation may not be possible when the person adopts certain body positions. (E.g., squatting, stretching, resting the chin on the hands, leaning, lying face down, etc.)
 - An area may be pixelated even though there are no human figures there.
 - Dolls, posters, etc. may be pixelated in some cases.
 - The area pixelated may be larger than the size of the target figure.
 - If the AI Privacy Guard function is enabled, using autofocus may cause the entire image to be pixelated.
 - Image transmission for pixelated streams may be delayed compared to other streams.
 - Persons sitting on the periphery of the image may not be pixelated.
 - The company assumes no responsibility for any inconvenience, damage or losses arising from the configuration of this product or the results thereof.
 - The company assumes no responsibility whatsoever for any accidents or damage that may occur.

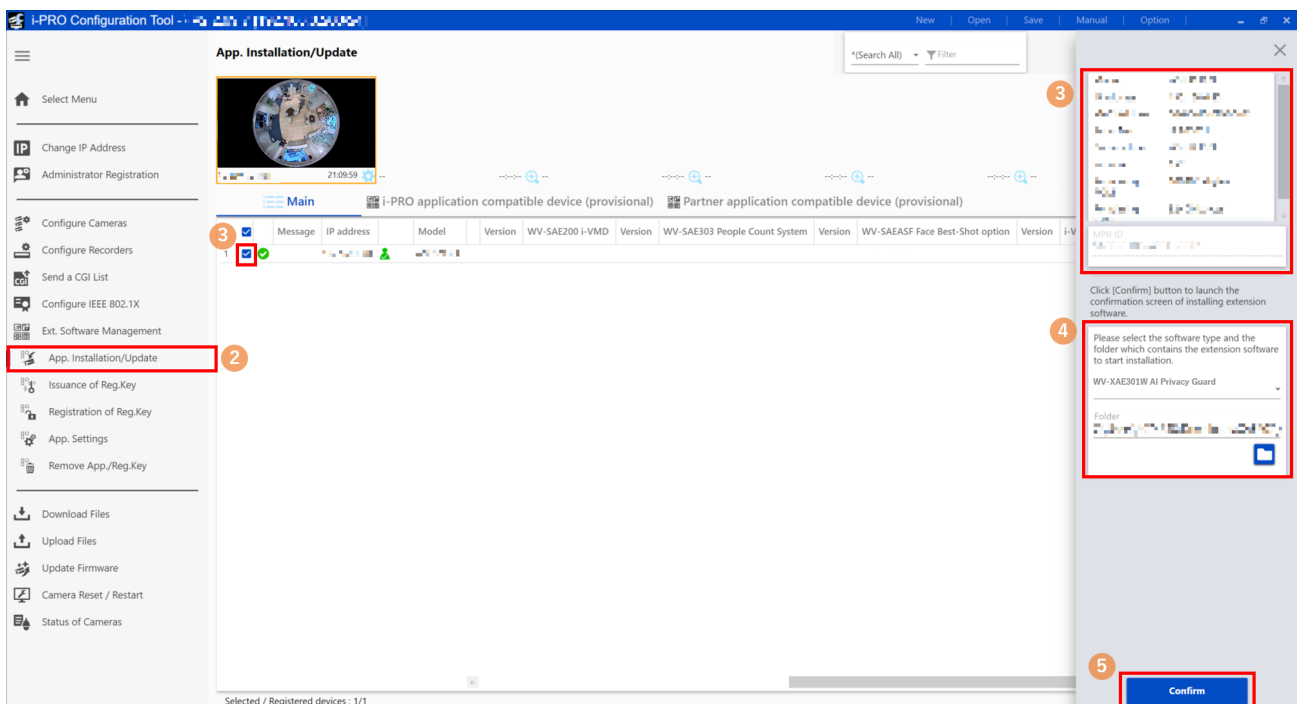
Activation

Operation flow



Install the Software

Follow the steps below to download this product and install it on your camera.



(1) Access the URL below, download "AI Privacy Guard for 360-degree fisheye" and save it on your PC.

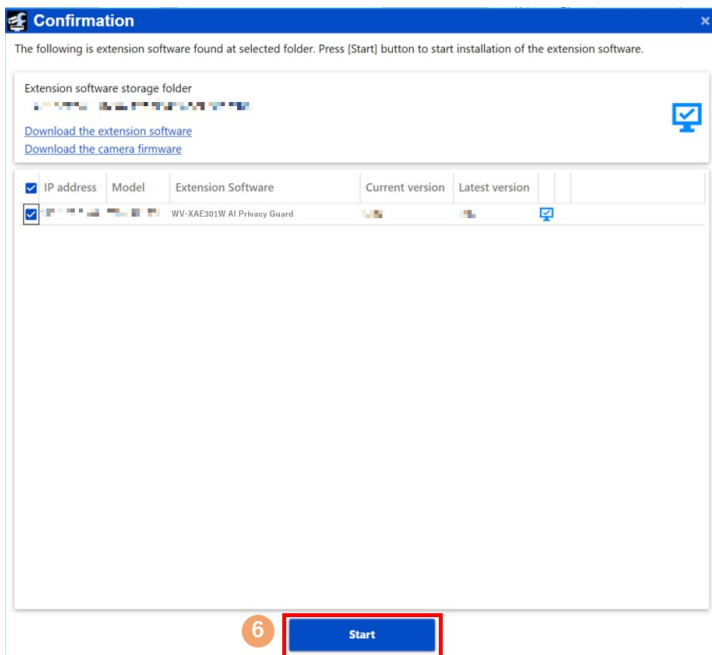
<https://i-pro.com/global/en/surveillance/training-support/documentation-database-list>

Activation (continued)

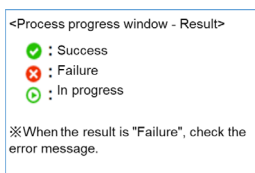
Important:

- A space cannot be used in the name of the saving directory.

- (2) Select the "App. Installation/Update" iCT sub-menu and click "i-PRO application compatible device".
- (3) Select the camera to install the application on and confirm that information such as the model number as well as the MPR ID is displayed.
- (4) Input the following items on the setting screen.
- Extension software: Select "AI Privacy Guard for 360-degree fisheye"
 - Folder: Specify the save location for the extension software obtained in STEP (1)
- (5) Click the [Confirm] button.



- (6) On the Confirmation screen, confirm that the target camera is checked, check the version of the app registered/ updated and click the [Start] button.



- (7) When the <Process progress window - Result> screen appears, confirm that the installation has been successfully completed.

Important:

- Do not turn off the power of the camera when installing the software.
- Do not perform any operations until the installation is completed.
- If the installation fails, check the details of the error in the message field.

Activation (continued)

How to obtain and register the Registration Key

This product DOES NOT need to be activated by "Registration Key" issued by Key Management System before you start using.

Follow the steps below to obtain the Registration Key.

<If you do not have your User ID and password for the Key Management System>

* Access the website of the Key Management System and create your User ID and password.

Then start reading from **STEP 1** below.

<If you already have your User ID and password for the Key Management System>

* Access the website of the Key Management System and "Issue Registration Key" with the User ID and password that you have obtained.

Then start reading from **STEP 2** below.

Note:

- This product has a trial period, during which you can use this product without registering the Registration Key. If you keep using it after the trial period (30 days), obtain and register the Registration Key.

STEP1 Sign up

(1) Access the URL below.

<https://kms.business.panasonic.net/ipkms/pc/home.htm>

(2) Login as a temporary user using the User ID and password written on the web page.

(3) Register required information and create your User ID and password.

Important:

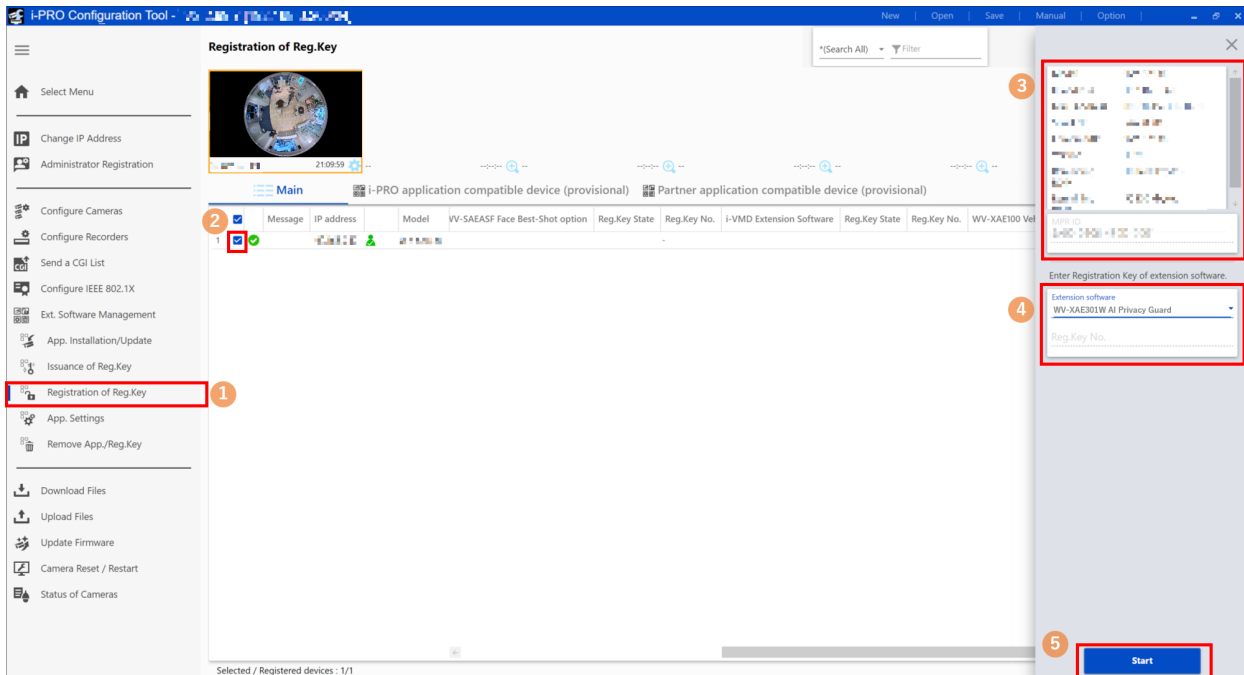
- Keep your User ID and password safe. You do not need to obtain a new User ID from the next time. Use the User ID already issued.
- It is recommended to change the password periodically. To change the password, log into PC-specific URL and use "Password Change."

STEP 2 Issue the Registration Key

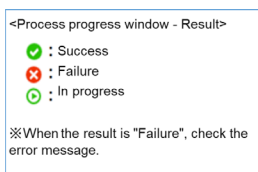
The screenshot shows the 'i-PRO Configuration Tool' interface. The sidebar menu on the left has 'Issuance of Reg.Key' highlighted with a red box and a circled '1'. The main content area displays a table with columns for 'Message', 'IP address', 'Model', 'Reg.Key State', 'Reg.Key No.', 'Activation Key No.', 'Registration ID', and 'WV-XAE201W AI Privacy Guard'. A red box and circled '2' highlight the 'Message' button. A modal dialog is open on the right, with a red box and circled '3' around its title. Inside the dialog, there are input fields for 'Activation Key No.' and 'Registration ID', with a red box and circled '4' around them. At the bottom of the dialog, there is a 'Next' button highlighted with a red box and circled '5'.

Activation (continued)

STEP 3 Register the Registration Key



- (1) Select the "Registration of Reg.Key" sub-menu.
- (2) Place a check in the check box for the camera for which the Registration key will be registered. (Multiple checks are allowed)
- (3) Select the target camera, and confirm that the model number and other information as well as the MPR ID is displayed.
- (4) Input the following on the setting screen.
 - Extension software: Select "AI Privacy Guard for 360-degree fisheye"
 - Reg.Key No.: The number issued by the Key Management System (16 digits)
- (5) Click the [Start] button.
- (6) On the Confirmation screen, confirm that the target camera has been checked and then click the [Start] button.



- (7) When the <Process progress window - Result> screen appears, confirm that the registration of the Registration key has been successfully completed.
- (8) After the process is complete, "AI Privacy Guard for 360-degree fisheye" will be enabled.

Note:

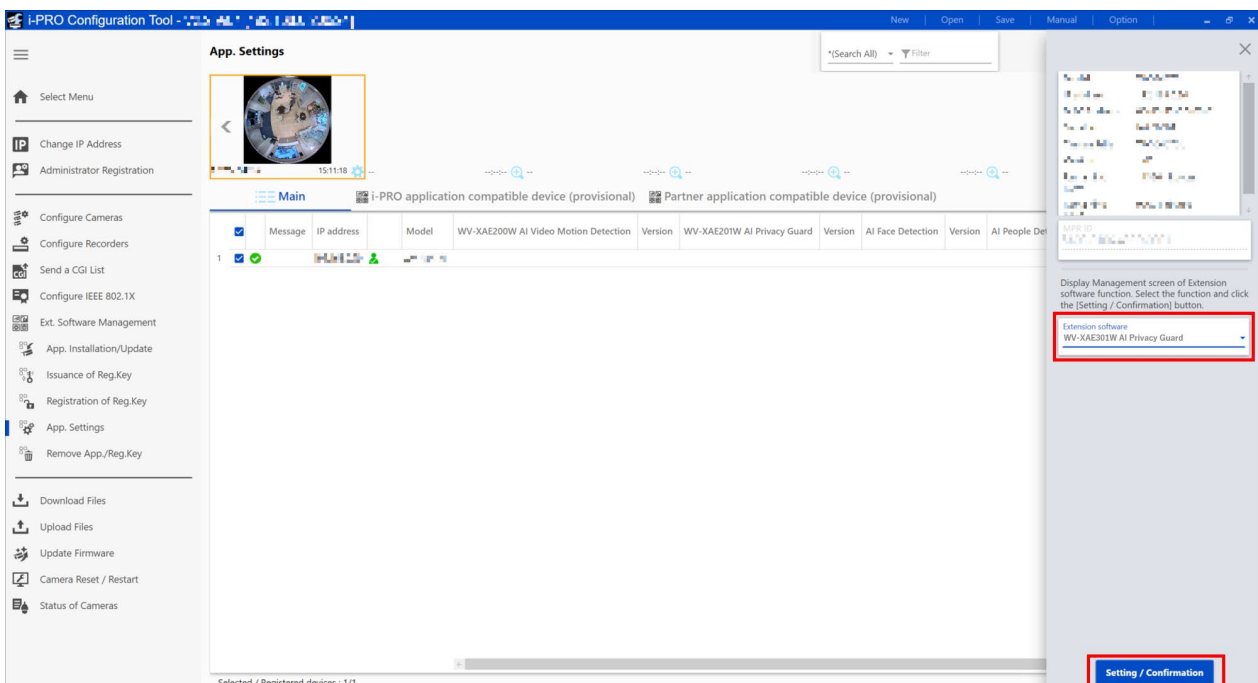
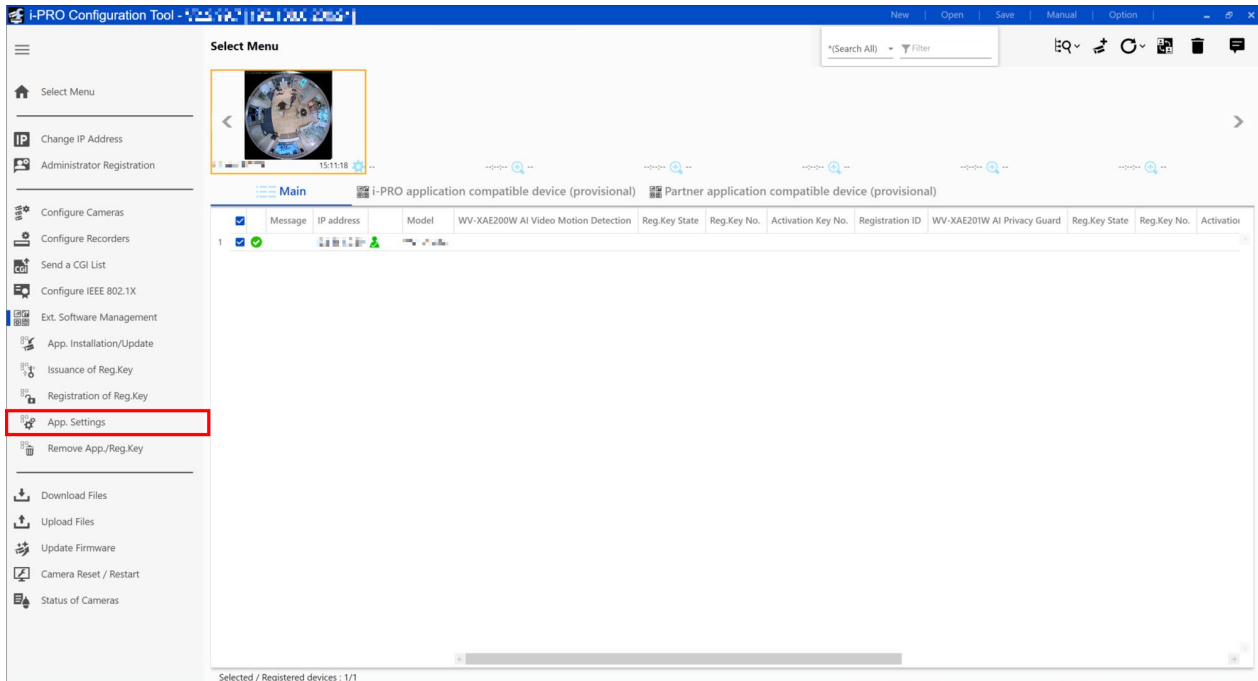
- The registration of the Registration Key is only operable by users whose access level is "1. Administrator". Refer to the Operating Instructions of the camera for how to configure the access level.
- If the installation fails, check the details of the error in the message field.

Setup Procedure

Setup Procedure

1. Open the setting screen

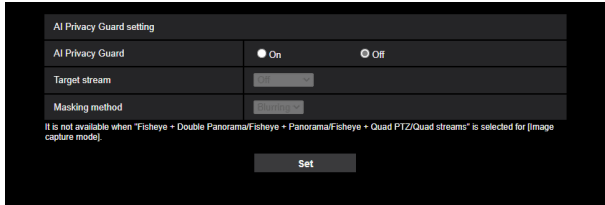
Select the camera to be configured and click "App. Settings" to bring up the screen that transitions to the application's setting screen.



Under "Extension software", select "AI Privacy Guard for 360-degree fisheye" and click [Setting/Confirmation] to open the setting screen for the AI Privacy Guard.

Setup Procedure (continued)

2. AI Privacy Guard setting



AI Privacy Guard

Select the targets which will be pixelated using the results of AI detection.

Off: No pixelation.

On: If a figure is determined to be human by the AI, that area will be pixelated.

Default setting: Off

Note:

- When "On" is selected, set the camera's [Image capture mode] to either "Fisheye" (for ceiling-mounted cameras only), "Double Panorama", "Quad PTZ", "Single PTZ" or "Panorama".

Target stream

Select the target stream which will be pixelated.

Off: No streams will be pixelated.

Stream(1): Only Stream(1) will be pixelated.

Stream(2): Only Stream(2) will be pixelated.

Default setting: Off

Note:

- AI Privacy Guard does not support JPEG transmission.
- When selecting Stream(1) or Stream(2), set the camera's [Image capture mode] to either "Fisheye" (for ceiling-mounted cameras only), "Double Panorama", "Quad PTZ", "Single PTZ", "Panorama" or "Corridor".

Masking method

Select the type of masking.

Blurring: Blurring is done for the detected target.

Block: Block is done for the detected target.

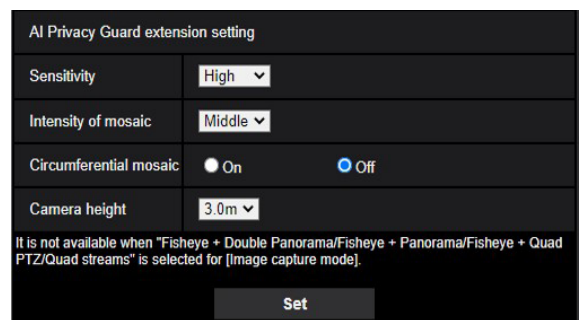
Default setting: Blurring

[AI Privacy Guard extension setting]

Configure the extension settings for AI Privacy Guard.

Access the following URL to display the setting screen.

[http://\[IP address\]/admin/setup_mosaic_extend.html](http://[IP address]/admin/setup_mosaic_extend.html)



[Sensitivity]

Select the sensitivity of AI Privacy Guard. The higher the mosaic, the easier it will be applied.

Low, Medium, High

Default setting: High

[Intensity of mosaic]

Select the intensity of mosaic. The stronger the value, the more difficult it is to see the subject.

Low, Middle, High

Default setting: Middle

[Circumferential mosaic]

When set to "On", it forcibly performs mosaic processing on the outer circumference.

Default setting: Off

[Camera height]

Select the height at which the camera is installed. The higher the setting, the wider the mosaic area will be.

2.5m/2.6m/2.7m/2.8m/2.9m/3.0m/3.1m/3.2m/3.3m/3.4m/3.5m/3.6m/3.7m/3.8m/3.9m/4.0m/4.1m/4.2m/4.3m/4.4m/4.5m/4.6m/4.7m/4.8m/4.9m/5.0m

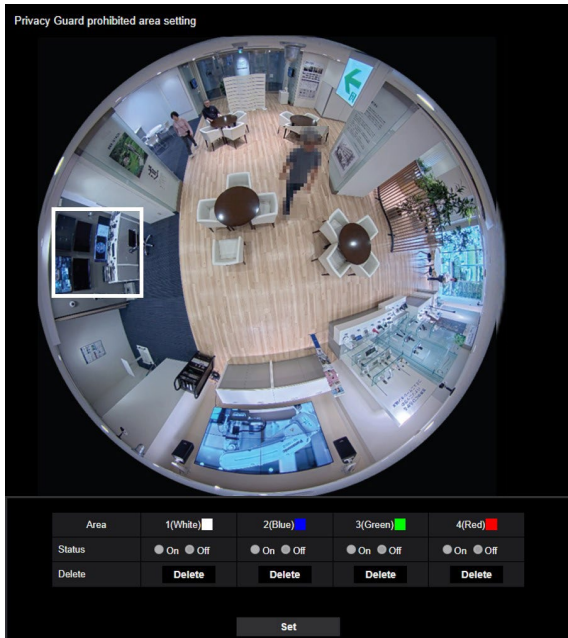
Default setting: 3.0m

Setup Procedure (continued)

[Privacy Guard prohibited area setting]

Configure the prohibited area settings for AI Privacy Guard. Access the following URL to display the setting screen.

[http://\[IP address\]/admin/setup_mosaic_mask.html](http://[IP address]/admin/setup_mosaic_mask.html)



[Area]

Masking zone (square): Draw the prohibited area as a rectangle. Settings for up to 8 locations are distinguished by the color of the drawing line.

The color of the drawing line is in order starting with "1 (White)".

[Status]

Set whether the prohibited area is enabled or not.

On: Prohibited area is enabled. Frames are displayed in solid lines for areas with occupancy detection enabled.

Off: Prohibited area is disabled. Frames are displayed in dashed lines for areas with occupancy detection disabled.

Default setting: [Area 1]/[Area 2]/[Area 3]/[Area 4]/[Area 5]/[Area 6]/[Area 7]/[Area 8] Off

[Delete]

Delete the selected prohibited area.

Important:

- When using the AI Privacy Guard function, you will be unable to set "Max 2/30 s", "Max 4/30 s", "Max 6/30 s", "Max 10/30 s", "Max 16/30 s", "Max 2/25 s", "Max 4/25 s", "Max 6/25 s", "Max 10/25 s" and "Max 16/25 s" for "Maximum Exposure Time." You will also be unable to use "On (FramerateControl)" under "GOP Control" of "Smart Coding."
- When the settings for the target stream of the AI Privacy Guard function are changed, the transmission of the camera image and manual recording to the SD card will stop temporarily.
- Depending on the camera you are using, the transmission frame rate may be limited when using the AI Privacy Guard function.

Refer to the URL below for details.

<https://i-pro.com/global/en/surveillance/training-support/support/technical-information>

<Control No.: C0103>

For U.S. and Canada:

i-PRO Americas Inc.

For Europe and other countries:

i-PRO EMEA B.V.

<https://www.i-pro.com/>