

## UL TEST REPORT AND PROCEDURE

<b>Standard:</b>	UL 62368-1, 3rd Ed, 2021-10-22 (Audio/video, information and communication technology equipment Part 1: Safety requirements) CAN/CSA C22.2 No. 62368-1:19, 3rd Ed, 2021-10-22 (Audio/video, information and communication technology equipment Part 1: Safety requirements)
<b>Certification Type:</b>	Listing
<b>CCN:</b>	AZOT, AZOT7 (Audio/video, Information and Communication Technology Equipment)
<b>Complementary CCN:</b>	N/A
<b>Product:</b>	Network Camera
<b>Model:</b>	WV-U65300-ZY, WV-S65300-ZY
<b>Rating:</b>	1) 12 V d.c. 890 mA 2) PoE 48 V d.c. 250 mA (Class 0)
<b>Applicant Name and Address:</b>	i-PRO Co., Ltd. 7-9-66 HAKOZAKI HIGASHI-KU FUKUOKA-SHI FUKUOKA 812-0053 JAPAN

This is to certify that representative samples of the products covered by this Test Report have been investigated in accordance with the above referenced Standards. The products have been found to comply with the requirements covering the category and the products are judged to be eligible for Follow-Up Service under the indicated Test Procedure. The manufacturer is authorized to use the UL Mark on such products which comply with this Test Report and any other applicable requirements of UL LLC ('UL') in accordance with the Follow-Up Service Agreement. Only those products which properly bear the UL Mark are considered as being covered by UL's Follow-Up Service under the indicated Test Procedure.

The applicant is authorized to reproduce the referenced Test Report provided it is reproduced in its entirety.

UL authorizes the applicant to reproduce the latest pages of the referenced Test Report consisting of the first page of the Specific Technical Criteria through to the end of the Conditions of Acceptability.

Any information and documentation involving UL Mark services are provided on behalf of UL LLC (UL) or any authorized licensee of UL.

Prepared By: Nao Maede / Project Handler

Reviewed By: Tadao Nakayama / Reviewer

### Supporting Documentation

The following documents located at the beginning of this Procedure supplement the requirements of this Test Report:

A. Authorization - The Authorization page may include additional Factory Identification Code markings.

B. Generic Inspection Instructions -

- i. Part AC details important information which may be applicable to products covered by this Procedure. Products described in this Test Report must comply with any applicable items listed unless otherwise stated in the body of this Test Report.
- ii. Part AE details any requirements which may be applicable to all products covered by this Procedure. Products described in this Test Report must comply with any applicable items listed unless otherwise stated in the body of each Test Report.
- iii. Part AF details the requirements for the UL Certification Mark which is not controlled by the technical standard used to investigate these products. Products are permitted to bear only the Certification Mark(s) corresponding to the countries for which it is certified, as indicated in each Test Report.

### Product Description

This product is a Network Camera for use in an outdoor environment.

This equipment is supplied from the External Power Supply.

External Power Supply : That External Power Supply itself is not evaluated in this report.

### Model Differences

Refer to Enclosure Id: 07-02 for details of model differences.

WV-U65300-ZY was used for test purposes and is considered representative of the entire series.

### Test Item Particulars

Product group	end product
Classification of use by	Ordinary person Instructed person Skilled person
Supply Connection	not mains connected: ES1
Supply tolerance	None
Supply connection – type	External Power Supply
Considered current rating of protective device	N/A
Equipment mobility	stationary wall/ceiling-mounted
Over voltage category (OVC)	OVC II
Class of equipment	Class III
Special installation location	N/A
Pollution degree (PD)	PD 2
Manufacturer's specified T <sub>ma</sub> (°C)	55
IP protection class	IP 66
Power systems	not AC mains
Altitude during operation (m)	2000 m or less
Altitude of test laboratory (m)	Approximately 10 to 20 m m
Mass of equipment (kg)	Approximately 1.63 kg

**Additional Information**

Maximum normal load is continuous recording.

**Additional Standards**

The product fulfills the requirements of: UL 62368-1 3rd Edition, Revised October 22, 2021, CAN/CSA C22.2 No. 62368-1:19, 3rd Edition, Revised October 22, 2021

**Markings and Instructions**

Clause Title	Marking or Instruction Details
Equipment identification marking – Manufacturer identification	Listee's or Recognized Company's name, Trade Name, Trademark or File Number
Equipment identification marking – model identification	Model Number
Equipment rating marking – ratings	Input Ratings (voltage, frequency/dc, current/power)

**Special Instructions to UL Representative**

N/A

<b>BD1.0</b>	<b>TABLE: Production-Line Testing Requirements</b>					
<b>BD1.1</b>	<b>Electric Strength Test Special Constructions – Refer to Generic Inspection Instructions, Part AC for further information.</b>					
Model	Component	Removable parts	Test probe location	Test V rms	Test V dc	Test Time, s
--	--	--	--	--	--	--
<b>BD1.2</b>	<b>Earthing Continuity Test Exemptions – This test is not required for the following models:</b>					
	all models					
<b>BD1.3</b>	<b>Electric Strength Test Exemptions – This test is not required for the following models:</b>					
	all models					
<b>BD1.4</b>	<b>Electric Strength Test Component Exemptions – The following solid-state components may be disconnected from the remainder of the circuitry during the performance of this test.</b>					
	N/A					

<b>BE1.0</b>	<b>Sample and Test Specifics for Follow-Up Tests at UL</b>				
Model	Component	Material	Test	Sample (s)	Test Specifics
--	--	--	--	--	--

4.1.2	TABLE: List of critical components					Pass
Object / part No.	Manufacturer/ trademark	Type / model	Technical data	Product Category CCN(s)	Mark(s) of conformity	Supplement ID
Multi-cable Connector (CN514)	Japan Solderless Terminal Mfg. Co., Ltd.	Type H, Series GH (SM12B-GHS- TB(LF)(SN))	AC/DC 100V, 1.0A	ECBT2	UL	
LAN Connector (JK505)	YUQIU ELECTRONICS CO., LTD. (DONGGUAN YUQIU ELECTRONICS CO., LTD.)	RJ011- FD08S3B1G10	AC 150V, 0.5A, Housing: V-0	QMFZ2	UL	
Lithium Battery (B501)	Panasonic Corp.	BR-1225 or BR- 1225A	3.0V, 48mAh, Maximum Abnormal Charging Current: 3.0mA	BBCV2	UL	
Alternative	POWER GLORY BATTERY TECH (HK) CO., LTD.	BR1225	3.0V, 45mAh, Maximum Abnormal Charging Current: 10mA	BBCV2	UL	
Lens Module	Tamron Co., Ltd.	DFC02N0100	Constructed with Focus motor: 1pcs, Zoom motor: 1pcs, Iris motor: 1pcs, IR switching motor: 1pcs	--	(Tested in equipment)	
TILT motor	MinebeaMitsumi Inc.	PM25S-048-PAE0	DC 13V, 15Ω	--	(Tested in equipment)	
PAN Motor	MinebeaMitsumi Inc.	PM25S-048-PAE0	DC 13V, 15Ω	--	(Tested in equipment)	
PCBs	Interchangeable	Interchangeable	Minimum V-1, Minimum 130°C	ZPMV2	UL	

Flexible PCBs	Interchangeable	Interchangeable	Minimum V-1, Minimum 80°C	ZPXK2	UL	
Internal Wires	Interchangeable	Interchangeable	VW-1, Minimum 30V, Minimum 80°C	AVLV2	UL	
Dome Cover	Mitsubishi Engineering - Plastic Corp.	S-2000VUR(f1)	Minimum 0.38mm thick, V-2	QMFZ2	UL	
Alternative	Interchangeable	Interchangeable	Minimum HB at thickness and color used.(Suitable for outdoor use with respect to exposure to Ultraviolet Light, Water Exposure and Immersion in accordance with UL 746C.)	QMFZ2	UL	
Lens Cover Front	CHANG CHUN PLASTICS CO., LTD.	4115	Minimum 0.75mm thick, V-0	QMFZ2	UL	
Alternative	Interchangeable	Interchangeable	Minimum HB at thickness and color used.	QMFZ2	UL	
Lens Cover Rear	CHANG CHUN PLASTICS CO., LTD.	4115	Minimum 0.75mm thick, V-0	QMFZ2	UL	
Alternative	Interchangeable	Interchangeable	Minimum HB at thickness and color used.	QMFZ2	UL	
Lower Cover	Interchangeable	ADC12	Aluminum	--	(Tested in equipment)	
SD Cover	Interchangeable	ADC12	Aluminum	--	(Tested in equipment)	

Top Cover	Interchangeable	ADC12	Aluminum	--	(Tested in equipment)	
Connector Cover	Interchangeable	ADC12	Aluminum	--	(Tested in equipment)	
Dome Seal Rubber	Dow Toray Co., Ltd.	RBB-6650-50	Silicone, Black	QMFZ2	UL	
Alternative	JIANGSU PEARL SILICONE RUBBER MATERIAL CO., LTD.	HD-87XX (Hardness: 50)	Silicone, Black	QMFZ2	UL	
Alternative	WYNCA TINYO SILICONE CO., LTD.	TY856 (Hardness: 50)	Silicone, Black	QMFZ2	UL	
SD Seal Rubber	Dow Toray Co., Ltd.	RBB-6640-40	Silicone, Black	QMFZ2	UL	
Alternative	JIANGSU PEARL SILICONE RUBBER MATERIAL CO., LTD.	HD-87XX (Hardness: 40)	Silicone, Black	QMFZ2	UL	
Alternate	WYNCA TINYO SILICONE CO., LTD.	TY856 (Hardness: 40)	Silicone, Black	QMFZ2	UL	
Lower Cover Rubber	Dow Toray Co., Ltd.	RBB-6640-40	Silicone, Black	QMFZ2	UL	
Alternative	JIANGSU PEARL SILICONE RUBBER MATERIAL CO., LTD.	HD-87XX (Hardness: 40)	Silicone, Black	QMFZ2	UL	
Alternate	WYNCA TINYO SILICONE CO., LTD.	TY856 (Hardness: 40)	Silicone, Black	QMFZ2	UL	
Connector Seal Rubber	Dow Toray Co., Ltd.	RBB-6640-40	Silicone, Black	QMFZ2	UL	

Alternative	JIANGSU PEARL SILICONE RUBBER MATERIAL CO., LTD.	HD-87XX (Hardness: 40)	Silicone, Black	QMFZ2	UL	
Alternate	WYNCA TINYO SILICONE CO., LTD.	TY856 (Hardness: 40)	Silicone, Black	QMFZ2	UL	
Grommet	Dow Toray Co., Ltd.	RBB-6630-30	Silicone, Black	QMFZ2	UL	
Alternate	WYNCA TINYO SILICONE CO., LTD.	TY856 (Hardness: 30)	Silicone, Natural	QMFZ2	UL	
Alternate	WYNCA TINYO SILICONE CO., LTD.	TY856 (Hardness: 20)	Silicone, Natural	QMFZ2	UL	

## Enclosures

Type	Supplement Id	Description
Photographs	03-01	Overall view_1
Photographs	03-02	Overall view_2
Photographs	03-03	Overall view_3
Photographs	03-04	Internal view
Photographs	03-05	PWB_1
Photographs	03-06	PWB_2
Schematics + PWB	05-01	Schematics for RTC circuit
Miscellaneous	07-01	Marking Label for Model WV-U65300-ZY
Miscellaneous	07-02	Model Differences
Miscellaneous	07-03	Marking Plate for Model WV-S65300-ZY

**i-PRO**



TYPE 4X  
ENCLOSURE

**IP66**

Network Camera  
ネットワークカメラ

Model No. WV-U65300-ZY

POWER 12 V  $\approx$  890 mA

PoE 48 V  $\approx$  250 mA (Class0)

i-PRO Co., Ltd. Engineered in Japan  
Made in China



i-PRO Co., Ltd. Fukuoka, Japan  
Authorised Representative in EU: i-PRO EMEA B.V.  
Laarderhoogtweg 25, 1101 EB Amsterdam, Netherlands

**CAN ICES-3 (A)/NMB-3(A)**



**LISTED**  
I.T.E. E521573



Item	Model	Basic model		Similar model
	Auto-track function	Not provided	Provided	

Auto-track function: ¶

The auto-track function automatically tracks and captures images of the subject when it is detected in an auto pan, preset sequence/preset position, patrol or area, that has been set in advance. This is a software feature.

 **i-PRO**

**FC**

**TYPE 4X  
ENCLOSURE**

**IP66**



Network Camera

Model No. WV-S65300-ZY

POWER 12 V  $\equiv$  890 mA

PoE 48 V  $\equiv$  250 mA (Class0)

i-PRO Co., Ltd. Engineered in Japan

Made in China



**LISTED**

I.T.E. E521573

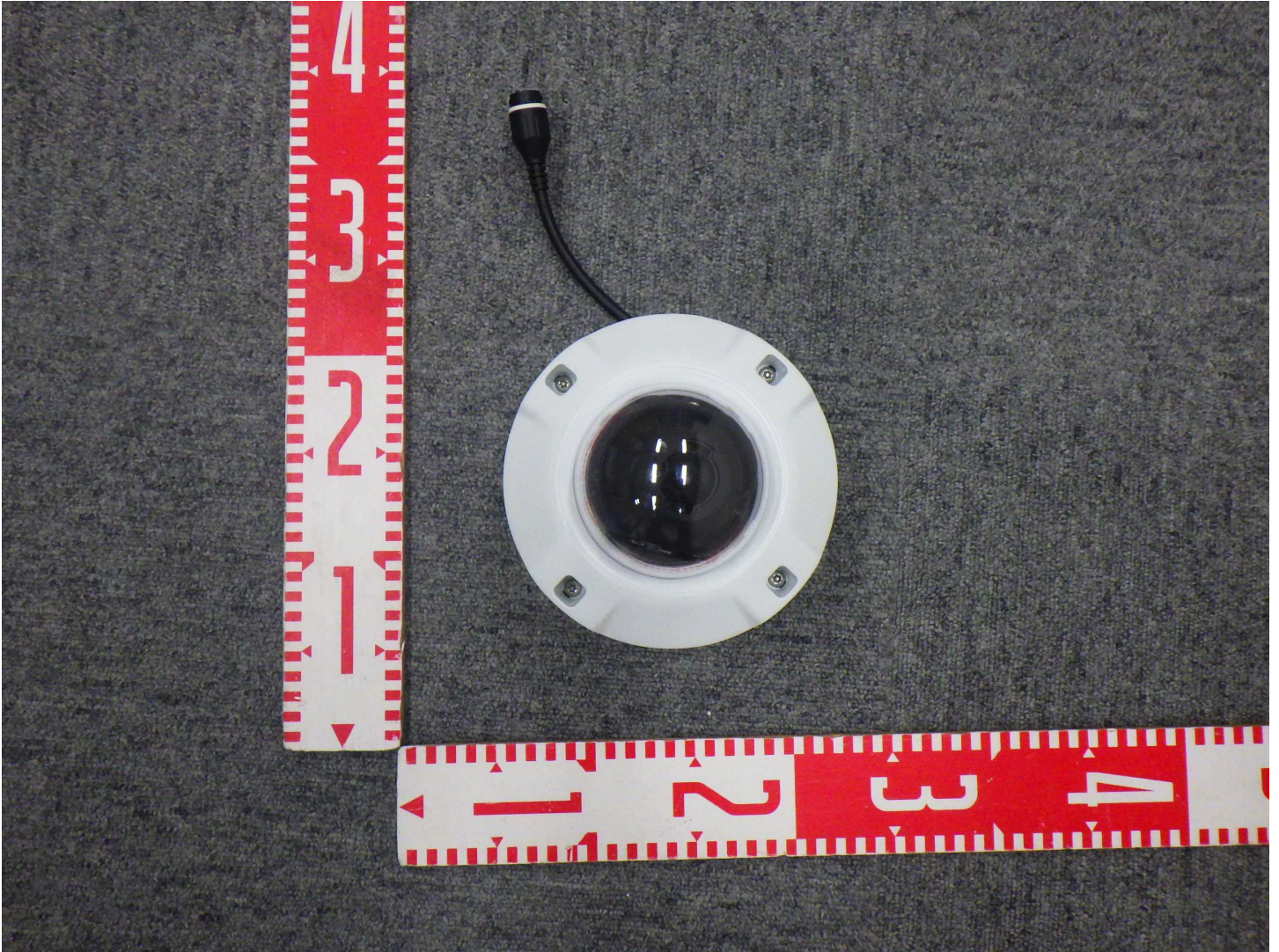
i-PRO Co., Ltd. Tokyo, Japan

Authorised Representative in EU: i-PRO EMEA B.V.

Laarderhoogtweg 25, 1101 EB Amsterdam, Netherlands

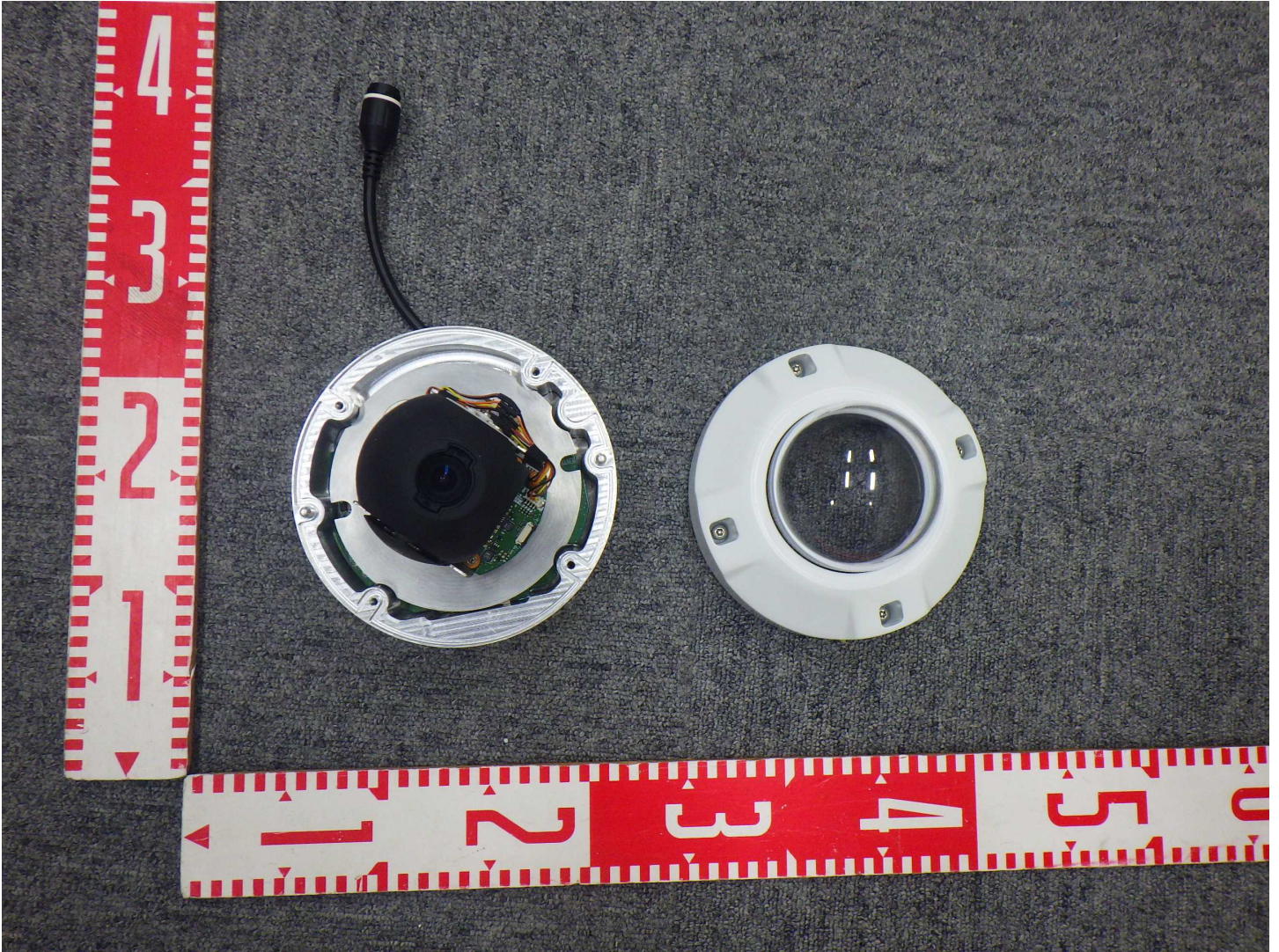
**CAN ICES-3 (A)/NMB-3(A)**

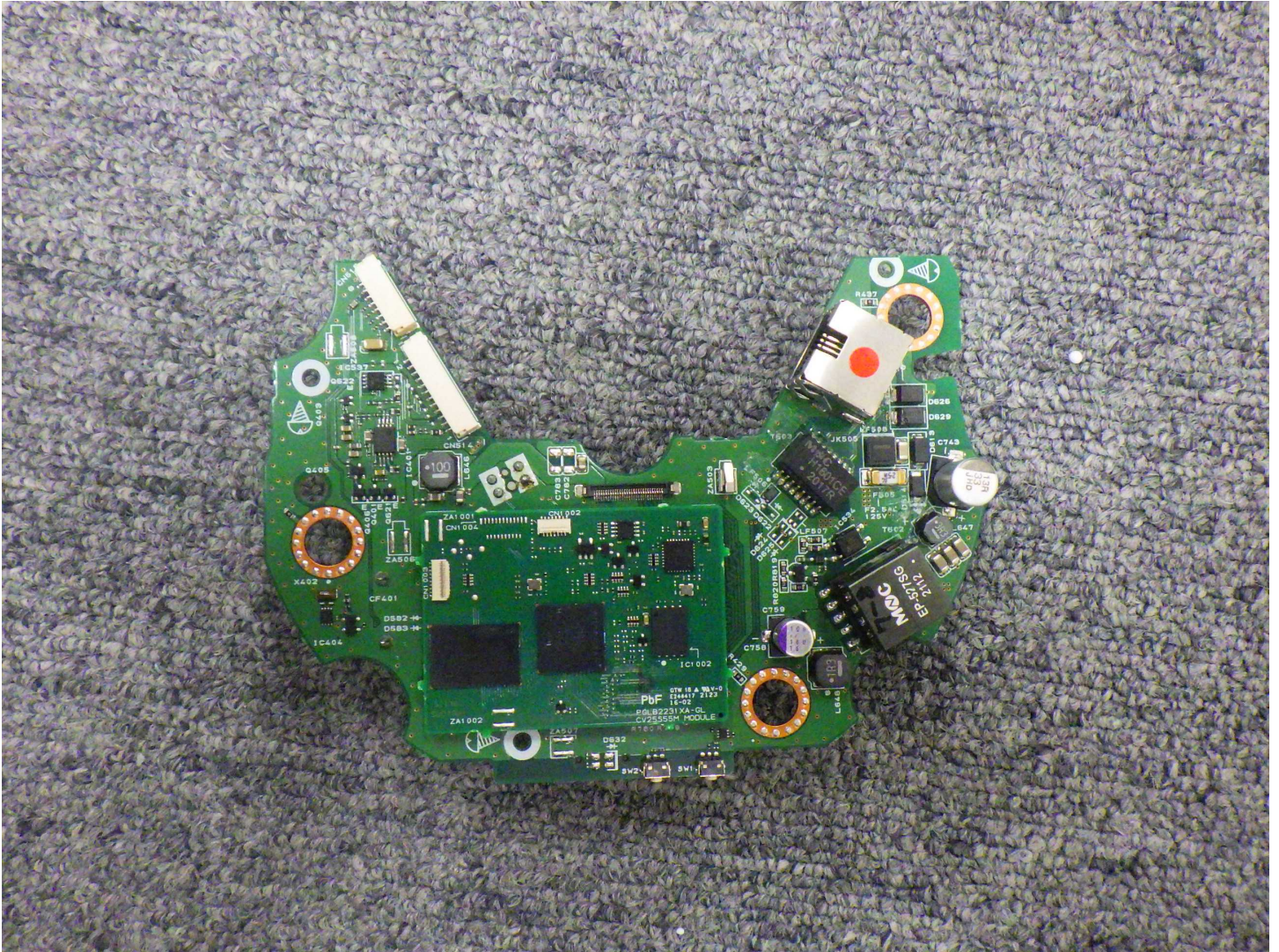


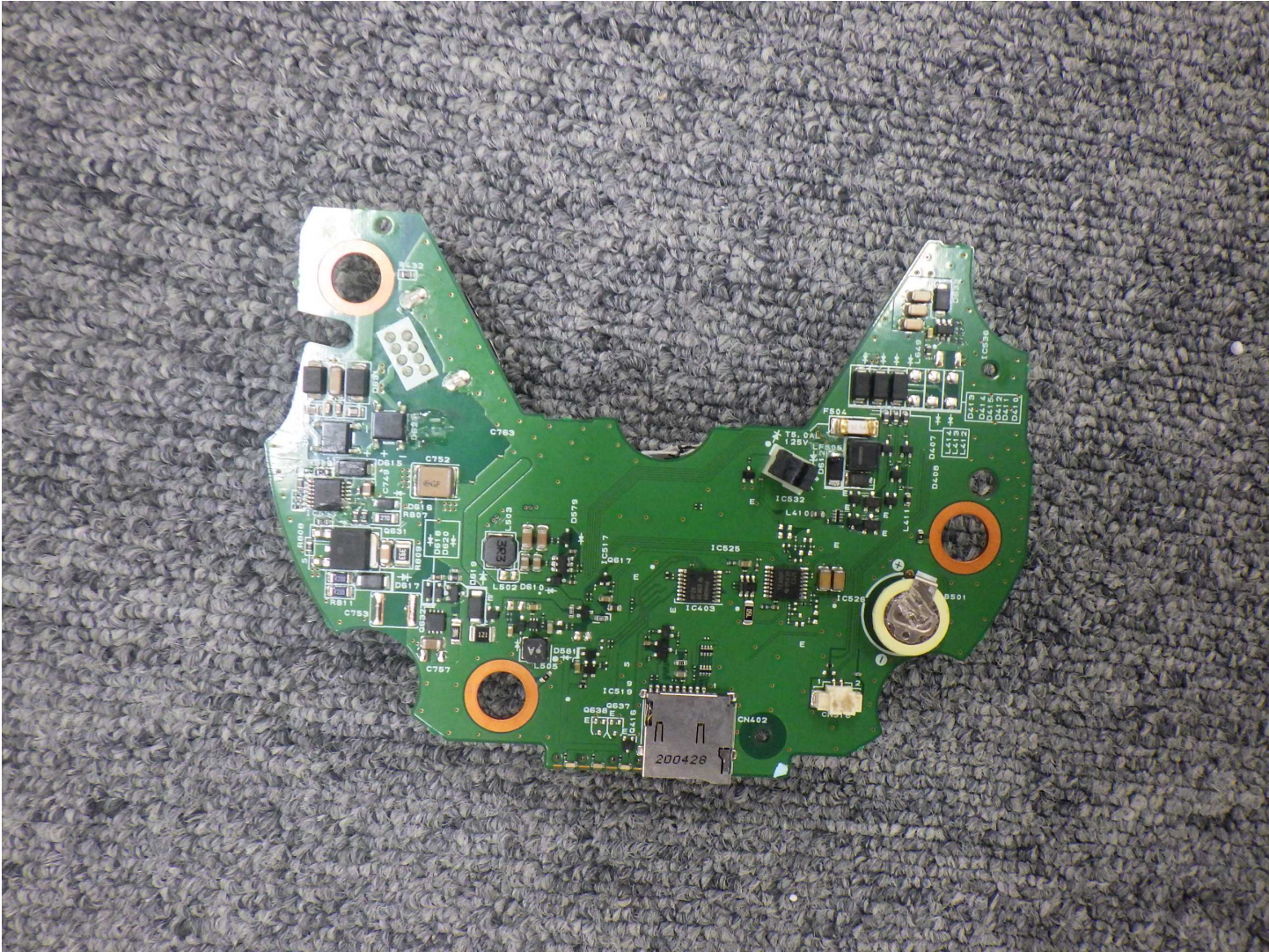














## UL TEST REPORT AND PROCEDURE

<b>Standard:</b>	UL 62368-1, 3rd Ed, 2021-10-22 (Audio/video, information and communication technology equipment Part 1: Safety requirements) CAN/CSA C22.2 No. 62368-1:19, 3rd Ed, 2021-10-22 (Audio/video, information and communication technology equipment Part 1: Safety requirements)
<b>Certification Type:</b>	Listing
<b>CCN:</b>	AZOT, AZOT7 (Audio/video, Information and Communication Technology Equipment)
<b>Complementary CCN:</b>	N/A
<b>Product:</b>	Network Camera
<b>Model:</b>	WV-U65300-ZY
<b>Rating:</b>	1) 12 V d.c. 890 mA 2) PoE 48 V d.c. 250 mA (Class 0)
<b>Applicant Name and Address:</b>	i-PRO Co., Ltd. 7-9-66 HAKOZAKI HIGASHI-KU FUKUOKA-SHI FUKUOKA 812-0053 JAPAN

This is to certify that representative samples of the products covered by this Test Report have been investigated in accordance with the above referenced Standards. The products have been found to comply with the requirements covering the category and the products are judged to be eligible for Follow-Up Service under the indicated Test Procedure. The manufacturer is authorized to use the UL Mark on such products which comply with this Test Report and any other applicable requirements of UL LLC ('UL') in accordance with the Follow-Up Service Agreement. Only those products which properly bear the UL Mark are considered as being covered by UL's Follow-Up Service under the indicated Test Procedure.

The applicant is authorized to reproduce the referenced Test Report provided it is reproduced in its entirety.

UL authorizes the applicant to reproduce the latest pages of the referenced Test Report consisting of the first page of the Specific Technical Criteria through to the end of the Conditions of Acceptability.

Any information and documentation involving UL Mark services are provided on behalf of UL LLC (UL) or any authorized licensee of UL.

Prepared By: Kenshi Shimomura / Project  
Handler

Reviewed By: Tadao Nakayama / Reviewer

### Supporting Documentation

The following documents located at the beginning of this Procedure supplement the requirements of this Test Report:

A. Authorization - The Authorization page may include additional Factory Identification Code markings.

B. Generic Inspection Instructions -

- i. Part AC details important information which may be applicable to products covered by this Procedure. Products described in this Test Report must comply with any applicable items listed unless otherwise stated in the body of this Test Report.
- ii. Part AE details any requirements which may be applicable to all products covered by this Procedure. Products described in this Test Report must comply with any applicable items listed unless otherwise stated in the body of each Test Report.
- iii. Part AF details the requirements for the UL Certification Mark which is not controlled by the technical standard used to investigate these products. Products are permitted to bear only the Certification Mark(s) corresponding to the countries for which it is certified, as indicated in each Test Report.

### Product Description

This product is a Network Camera for use in an outdoor environment.

This equipment is supplied from the External Power Supply.

External Power Supply : That External Power Supply itself is not evaluated in this report.

### Model Differences

N/A

### Test Item Particulars

Product group	end product
Classification of use by	Ordinary person Instructed person Skilled person
Supply Connection	not mains connected: ES1
Supply tolerance	None
Supply connection – type	External Power Supply
Considered current rating of protective device	N/A
Equipment mobility	stationary wall/ceiling-mounted
Over voltage category (OVC)	OVC II
Class of equipment	Class III
Special installation location	N/A
Pollution degree (PD)	PD 2
Manufacturer's specified T <sub>ma</sub> (°C)	55
IP protection class	IP 66
Power systems	not AC mains
Altitude during operation (m)	2000 m or less
Altitude of test laboratory (m)	Approximately 10 to 20 m m
Mass of equipment (kg)	Approximately 1.63 kg

### Additional Information

Maximum normal load is continuous recording.

**Additional Standards**

The product fulfills the requirements of: UL 62368-1 3rd Edition, Revised October 22, 2021, CAN/CSA C22.2 No. 62368-1:19, 3rd Edition, Revised October 22, 2021

**Markings and Instructions**

Clause Title	Marking or Instruction Details
Equipment identification marking – Manufacturer identification	Listee's or Recognized Company's name, Trade Name, Trademark or File Number
Equipment identification marking – model identification	Model Number
Equipment rating marking – ratings	Input Ratings (voltage, frequency/dc, current/power)

**Special Instructions to UL Representative**

N/A

<b>BD1.0</b>						
<b>TABLE: Production-Line Testing Requirements</b>						
<b>BD1.1</b>						
<b>Electric Strength Test Special Constructions – Refer to Generic Inspection Instructions, Part AC for further information.</b>						
Model	Component	Removable parts	Test probe location	Test V rms	Test V dc	Test Time, s
--	--	--	--	--	--	--
<b>BD1.2</b>						
<b>Earthing Continuity Test Exemptions – This test is not required for the following models:</b>						
WV-U65300-ZY						
<b>BD1.3</b>						
<b>Electric Strength Test Exemptions – This test is not required for the following models:</b>						
WV-U65300-ZY						
<b>BD1.4</b>						
<b>Electric Strength Test Component Exemptions – The following solid-state components may be disconnected from the remainder of the circuitry during the performance of this test.</b>						
N/A						

<b>BE1.0</b>					
<b>Sample and Test Specifics for Follow-Up Tests at UL</b>					
Model	Component	Material	Test	Sample (s)	Test Specifics
--	--	--	--	--	--

4.1.2	TABLE: List of critical components					Pass
Object / part No.	Manufacturer/ trademark	Type / model	Technical data	Product Category CCN(s)	Mark(s) of conformity	Supplement ID
Multi-cable Connector (CN514)	Japan Solderless Terminal Mfg. Co., Ltd.	Type H, Series GH (SM12B-GHS- TB(LF)(SN))	AC/DC 100V, 1.0A	ECBT2	UL	
LAN Connector (JK505)	YUQIU ELECTRONICS CO., LTD. (DONGGUAN YUQIU ELECTRONICS CO., LTD.)	RJ011- FD08S3B1G10	AC 150V, 0.5A, Housing: V-0	QMFZ2	UL	
Lithium Battery (B501)	Panasonic Corp.	BR-1225 or BR- 1225A	3.0V, 48mAh, Maximum Abnormal Charging Current: 3.0mA	BBCV2	UL	
Alternative	POWER GLORY BATTERY TECH (HK) CO., LTD.	BR1225	3.0V, 45mAh, Maximum Abnormal Charging Current: 10mA	BBCV2	UL	
Lens Module	Tamron Co., Ltd.	DFC02N0100	Constructed with Focus motor: 1pcs, Zoom motor: 1pcs, Iris motor: 1pcs, IR switching motor: 1pcs	--	(Tested in equipment)	
TILT motor	MinebeaMitsumi Inc.	PM25S-048-PAE0	DC 13V, 15Ω	--	(Tested in equipment)	
PAN Motor	MinebeaMitsumi Inc.	PM25S-048-PAE0	DC 13V, 15Ω	--	(Tested in equipment)	
PCBs	Interchangeable	Interchangeable	Minimum V-1, Minimum 130°C	ZPMV2	UL	
Flexible PCBs	Interchangeable	Interchangeable	Minimum V-1, Minimum 80°C	ZPXK2	UL	

Internal Wires	Interchangeable	Interchangeable	VW-1, Minimum 30V, Minimum 80°C	AVLV2	UL	
Dome Cover	Mitsubishi Engineering - Plastic Corp.	S-2000VUR(f1)	Minimum 0.38mm thick, V-2	QMFZ2	UL	
Alternative	Interchangeable	Interchangeable	Minimum HB at thickness and color used.(Suitable for outdoor use with respect to exposure to Ultraviolet Light, Water Exposure and Immersion in accordance with UL 746C.)	QMFZ2	UL	
Lens Cover Front	CHANG CHUN PLASTICS CO., LTD.	4115	Minimum 0.75mm thick, V-0	QMFZ2	UL	
Alternative	Interchangeable	Interchangeable	Minimum HB at thickness and color used.	QMFZ2	UL	
Lens Cover Rear	CHANG CHUN PLASTICS CO., LTD.	4115	Minimum 0.75mm thick, V-0	QMFZ2	UL	
Alternative	Interchangeable	Interchangeable	Minimum HB at thickness and color used.	QMFZ2	UL	
Lower Cover	Interchangeable	ADC12	Aluminum	--	(Tested in equipment)	
SD Cover	Interchangeable	ADC12	Aluminum	--	(Tested in equipment)	
Top Cover	Interchangeable	ADC12	Aluminum	--	(Tested in equipment)	
Connector Cover	Interchangeable	ADC12	Aluminum	--	(Tested in equipment)	

Dome Seal Rubber	Dow Toray Co., Ltd.	RBB-6650-50	Silicone, Black	QMFZ2	UL	
Alternative	JIANGSU PEARL SILICONE RUBBER MATERIAL CO., LTD.	HD-87XX (Hardness: 50)	Silicone, Black	QMFZ2	UL	
Alternative	WYNCA TINYO SILICONE CO., LTD.	TY856 (Hardness: 50)	Silicone, Black	QMFZ2	UL	
SD Seal Rubber	Dow Toray Co., Ltd.	RBB-6640-40	Silicone, Black	QMFZ2	UL	
Alternative	JIANGSU PEARL SILICONE RUBBER MATERIAL CO., LTD.	HD-87XX (Hardness: 40)	Silicone, Black	QMFZ2	UL	
Alternate	WYNCA TINYO SILICONE CO., LTD.	TY856 (Hardness: 40)	Silicone, Black	QMFZ2	UL	
Lower Cover Rubber	Dow Toray Co., Ltd.	RBB-6640-40	Silicone, Black	QMFZ2	UL	
Alternative	JIANGSU PEARL SILICONE RUBBER MATERIAL CO., LTD.	HD-87XX (Hardness: 40)	Silicone, Black	QMFZ2	UL	
Alternate	WYNCA TINYO SILICONE CO., LTD.	TY856 (Hardness: 40)	Silicone, Black	QMFZ2	UL	
Connector Seal Rubber	Dow Toray Co., Ltd.	RBB-6640-40	Silicone, Black	QMFZ2	UL	
Alternative	JIANGSU PEARL SILICONE RUBBER MATERIAL CO., LTD.	HD-87XX (Hardness: 40)	Silicone, Black	QMFZ2	UL	
Alternate	WYNCA TINYO SILICONE CO., LTD.	TY856 (Hardness: 40)	Silicone, Black	QMFZ2	UL	

Grommet	Dow Toray Co., Ltd.	RBB-6630-30	Silicone, Black	QMFZ2	UL	
Alternate	WYNCA TINYO SILICONE CO., LTD.	TY856 (Hardness: 30)	Silicone, Natural	QMFZ2	UL	
Alternate	WYNCA TINYO SILICONE CO., LTD.	TY856 (Hardness: 20)	Silicone, Natural	QMFZ2	UL	

## Enclosures

Type	Supplement Id	Description
Photographs	03-01	Overall view_1
Photographs	03-02	Overall view_2
Photographs	03-03	Overall view_3
Photographs	03-04	Internal view
Photographs	03-05	PWB_1
Photographs	03-06	PWB_2
Schematics + PWB	05-01	Schematics for RTC circuit
Miscellaneous	07-01	Marking Label

**i-PRO**



TYPE 4X  
ENCLOSURE

**IP66**

Network Camera  
ネットワークカメラ

Model No. WV-U65300-ZY

POWER 12 V ≐ 890 mA

PoE 48 V ≐ 250 mA (Class0)

i-PRO Co., Ltd. Engineered in Japan  
Made in China



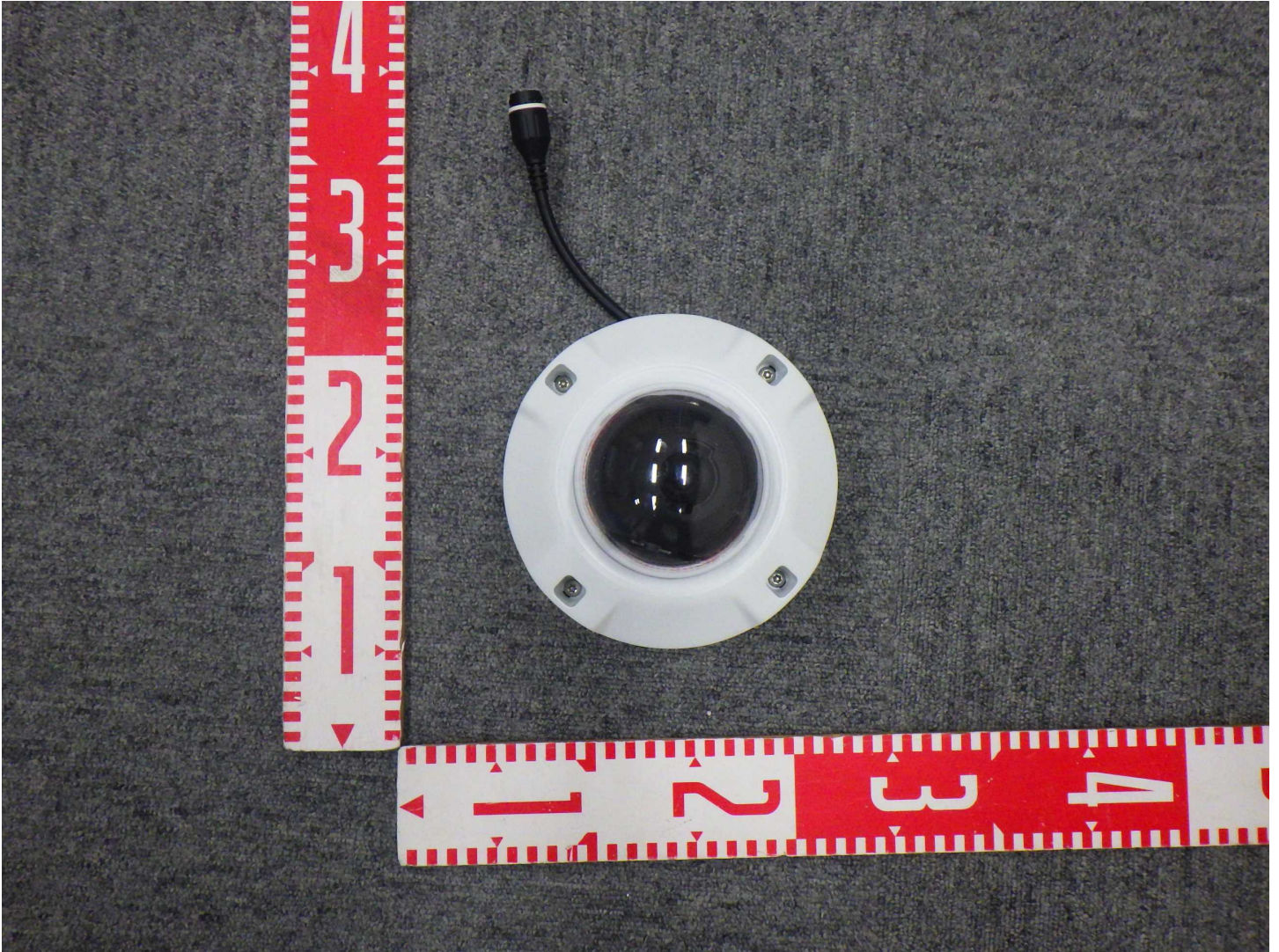
**LISTED**

I.T.E. E521573

i-PRO Co., Ltd. Fukuoka, Japan  
Authorised Representative in EU: i-PRO EMEA B.V.  
Laarderhoogtweg 25, 1101 EB Amsterdam, Netherlands

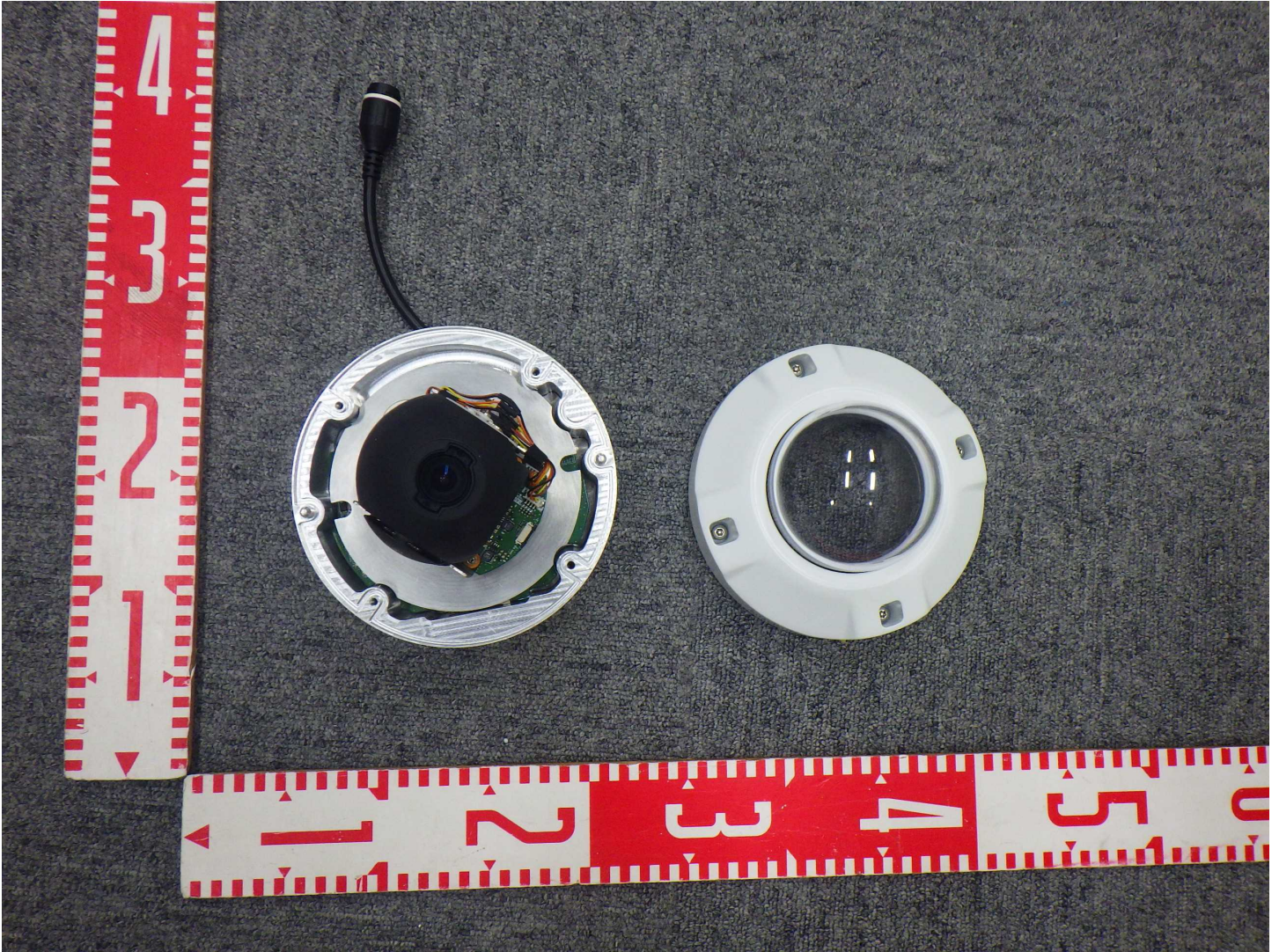
**CAN ICES-3 (A)/NMB-3(A)**

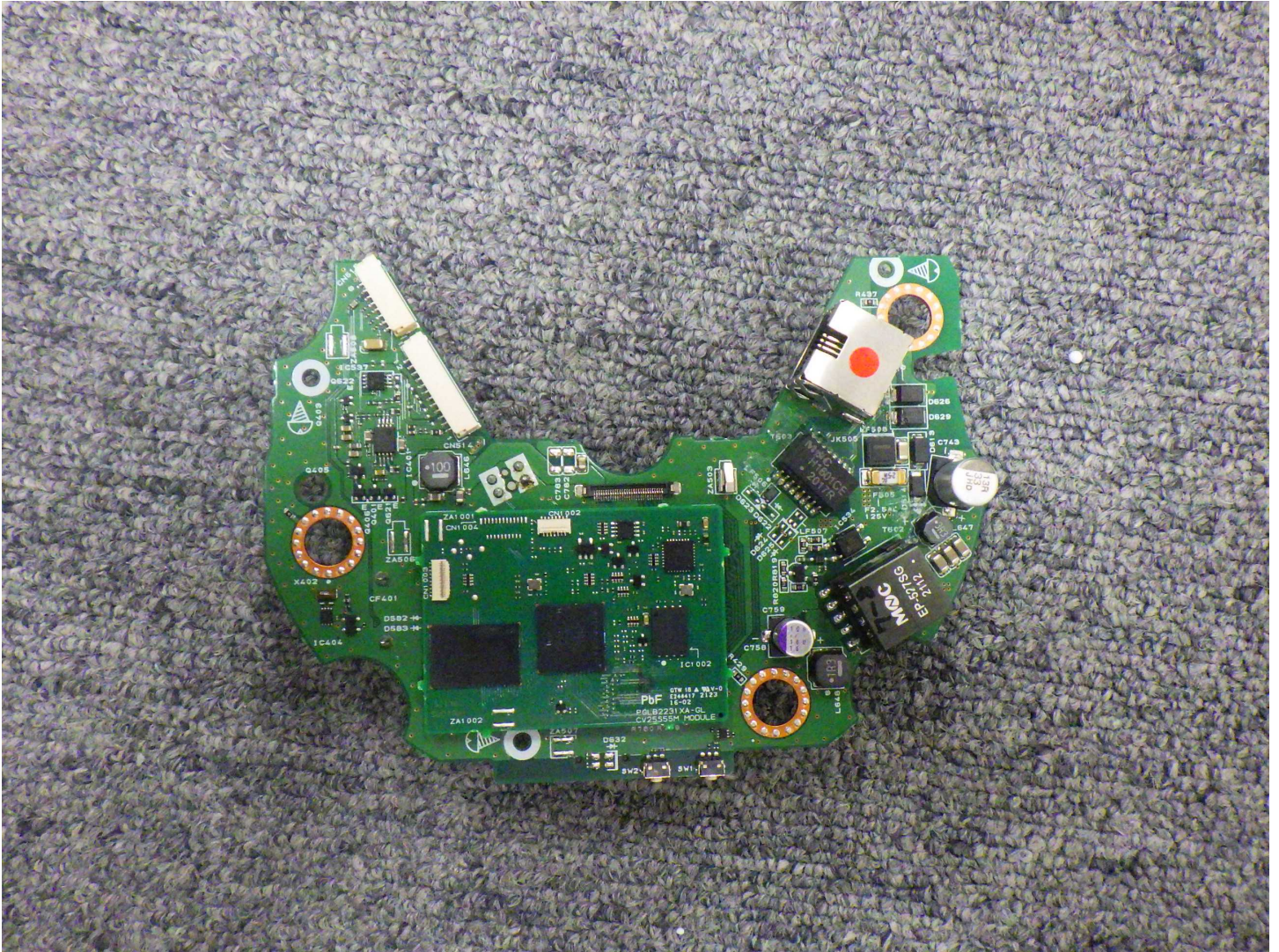


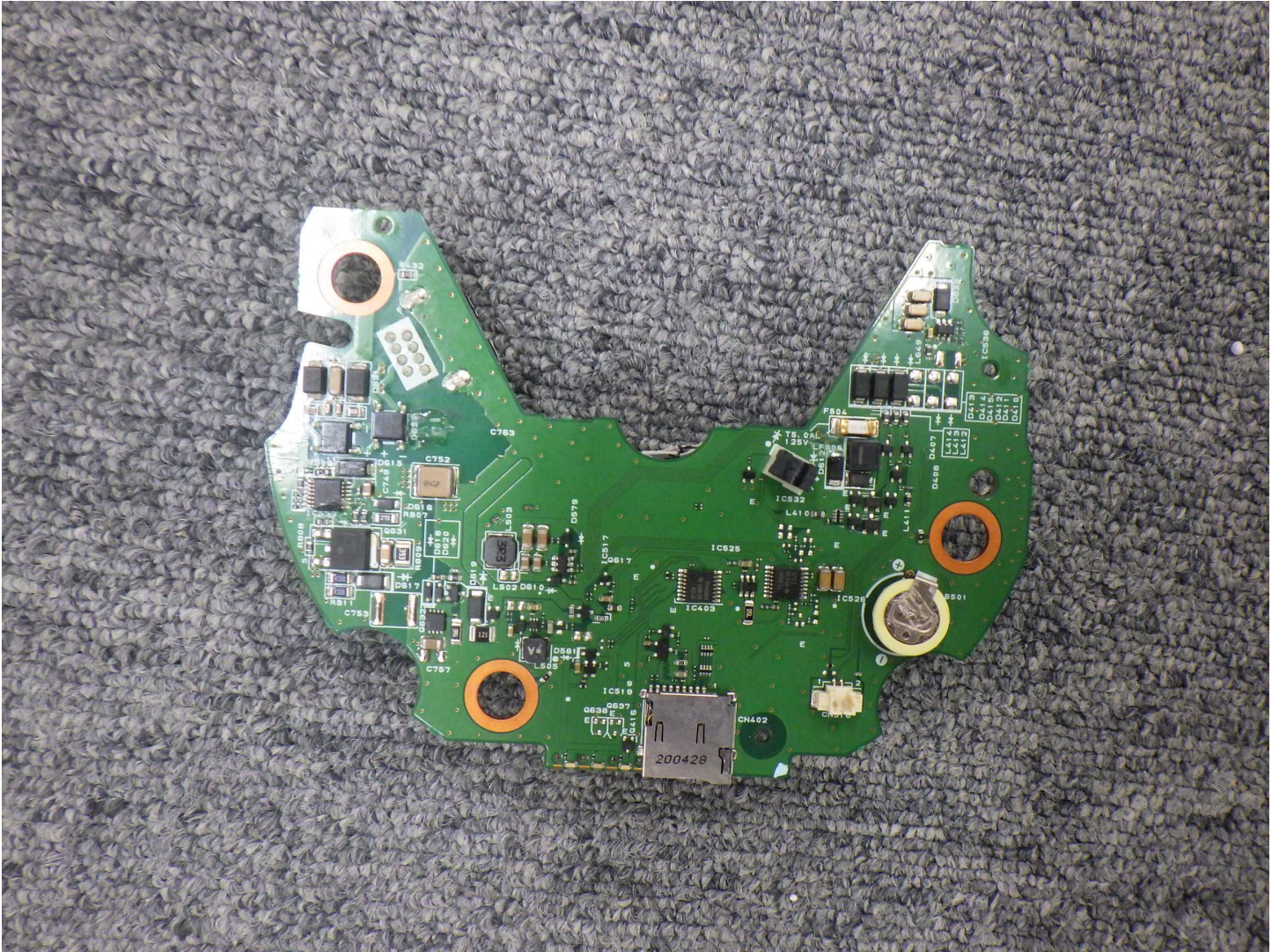












# 【RTC】

