

Panasonic

Ubiquitous Security



Management Software
WV-ASM100
WV-ASM100L

Display Configuration



Operation Display



- Live Viewing
- Camera Control
- Search and Playback
- Save as Still Image
- Print
- Download

- Alarm pop-up
(Click to view alarm CH)



Map Display



- Camera Icons on Map
- Click camera icon to view the video on the operation display

- Blink red icon when alarm occurred
- Icon to link to other map



Live Display



- Live Viewing(1/4/9/16 screen)
- Live sequence(1/4/9/16 screen)

- Alarm Video Switching

1 Monitor



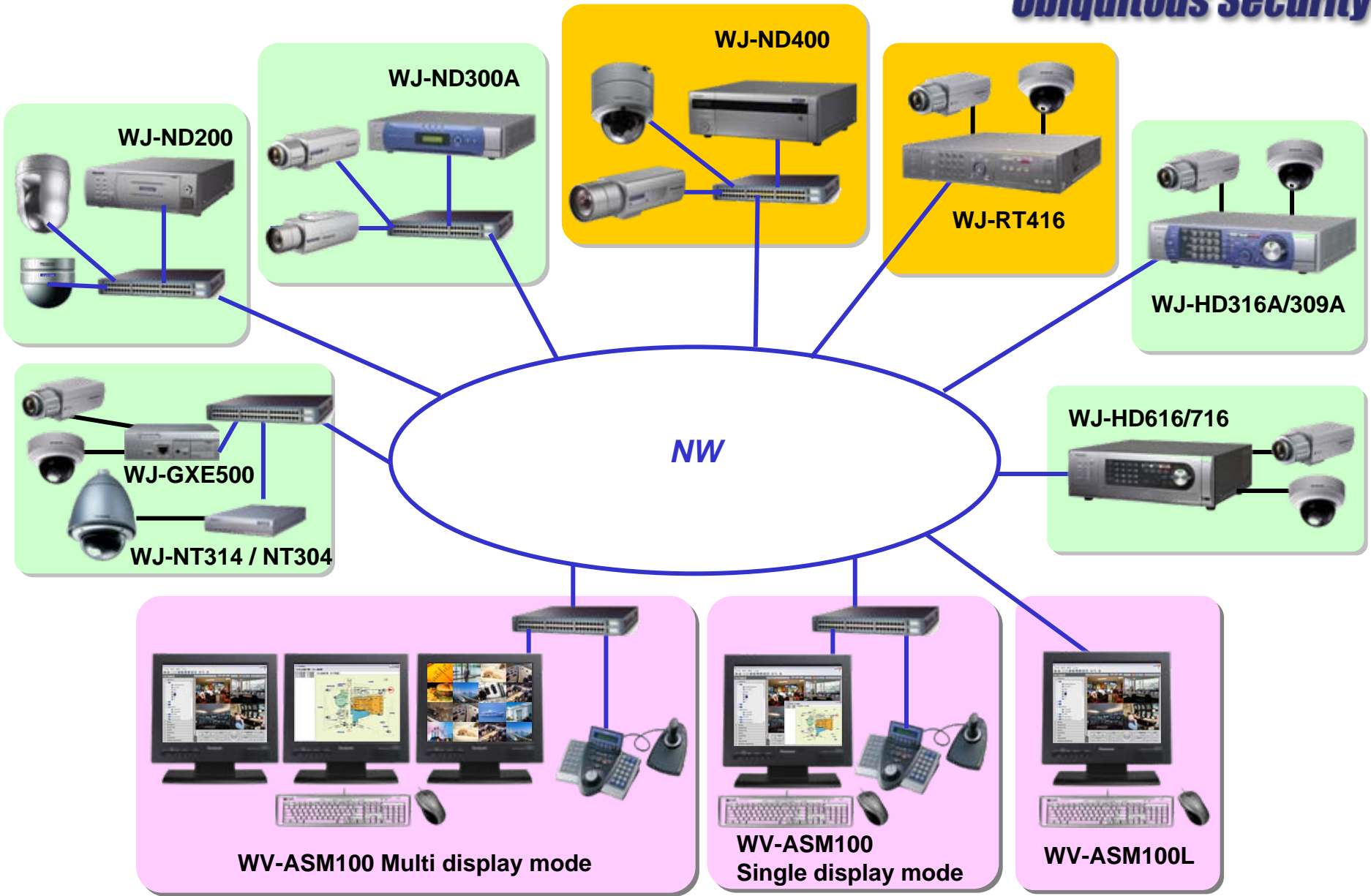
2 Monitors



- Live Viewing is available up to 16 screens
- Search and Playback (1,4,9,16)

System Diagram

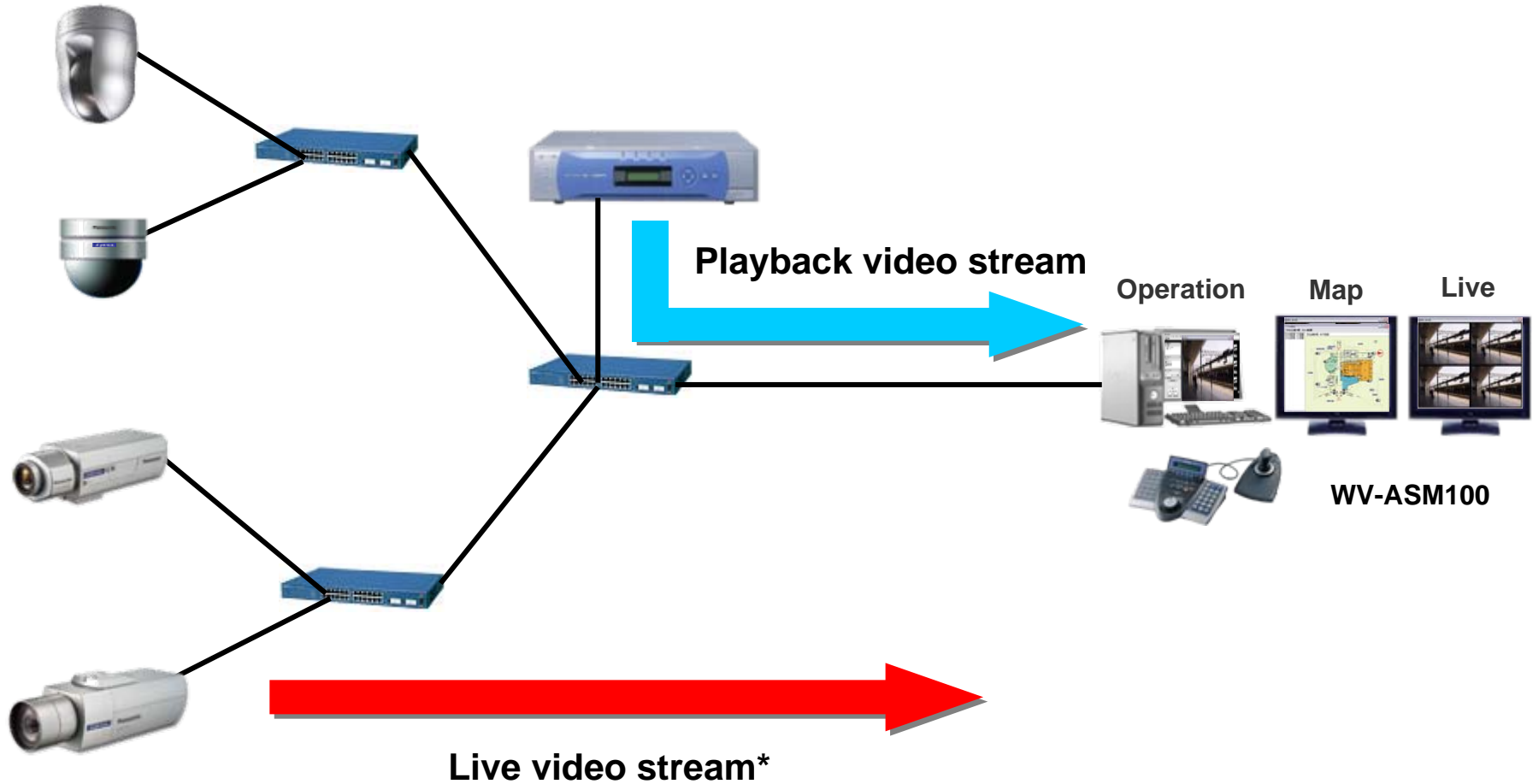
Ubiquitous Security



Live & Playback Video Stream

Panasonic
ideas for life

Ubiquitous Security



*Live Stream can be selected from cameras or recorders

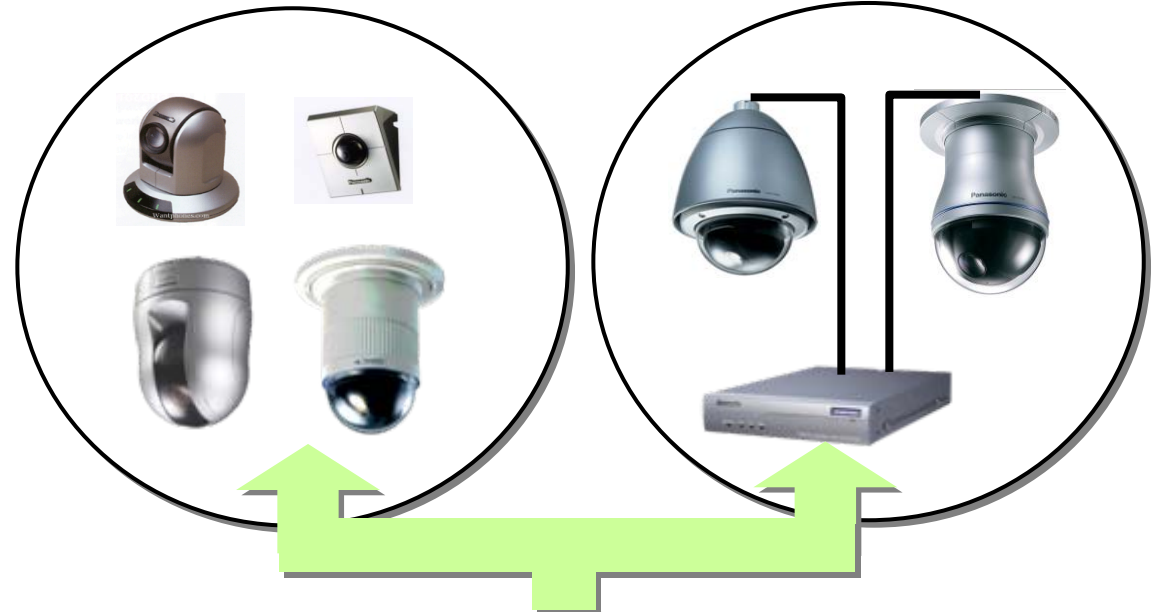
- WV-CU950* can use with the WV-ASM100

*IP address setup is required for the WV-CU950



■ Camera Control

- Pan/Tilt
- Zoom
- Focus
- Preset operation
- Preset registration
- Auto pan on/off
- Auto track on/off
- AUX open/close



■ Camera support

- i-PRO Cameras
 - BB&BL Cameras
 - Analog Cameras(*)
- (*)via WJ-NT304/NT314/GXE500

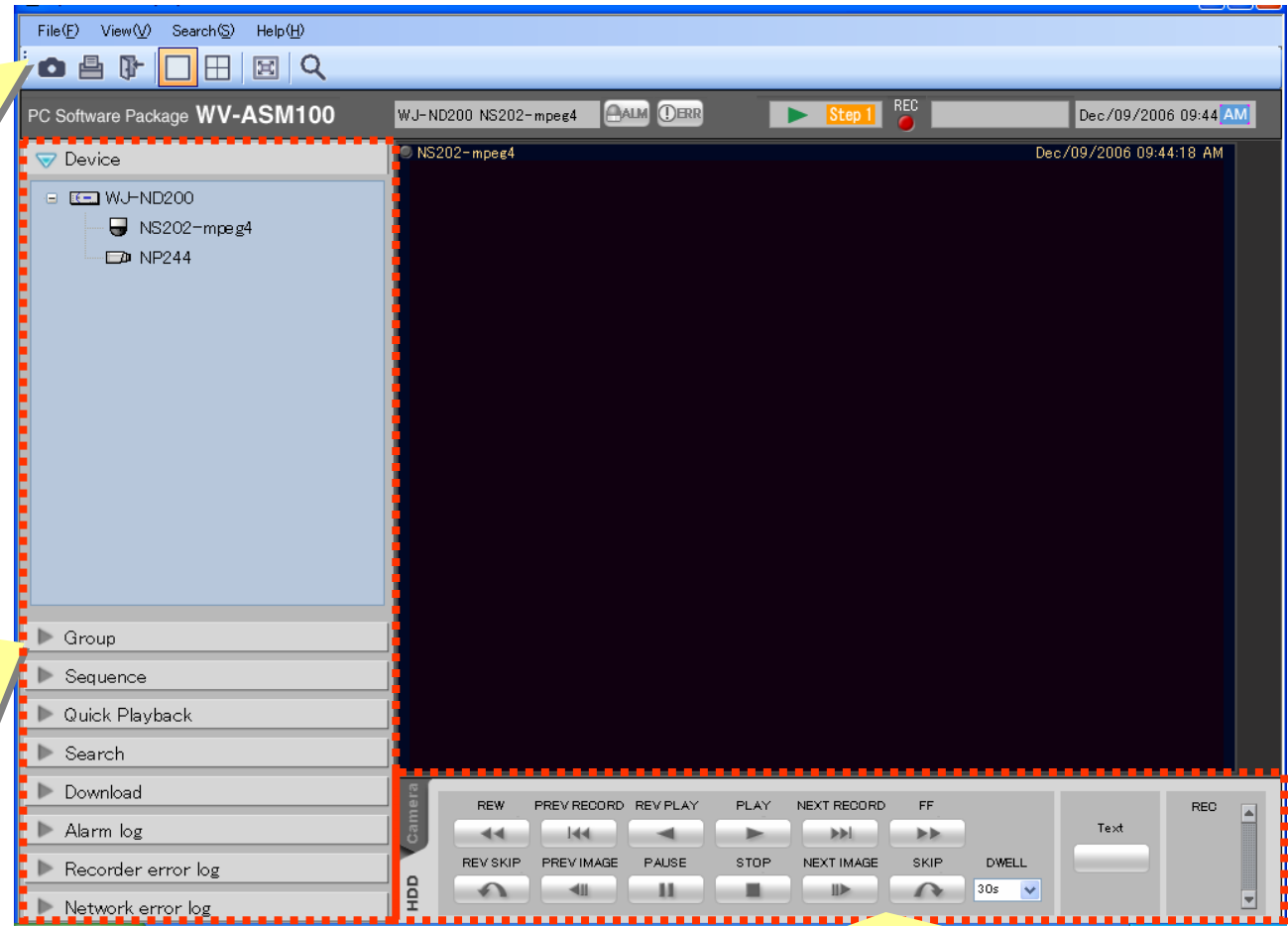


Tool Bar

- Save as JPEG
- Print
- Logout
- Single Screen
- Multi screen
- Full screen
- Search

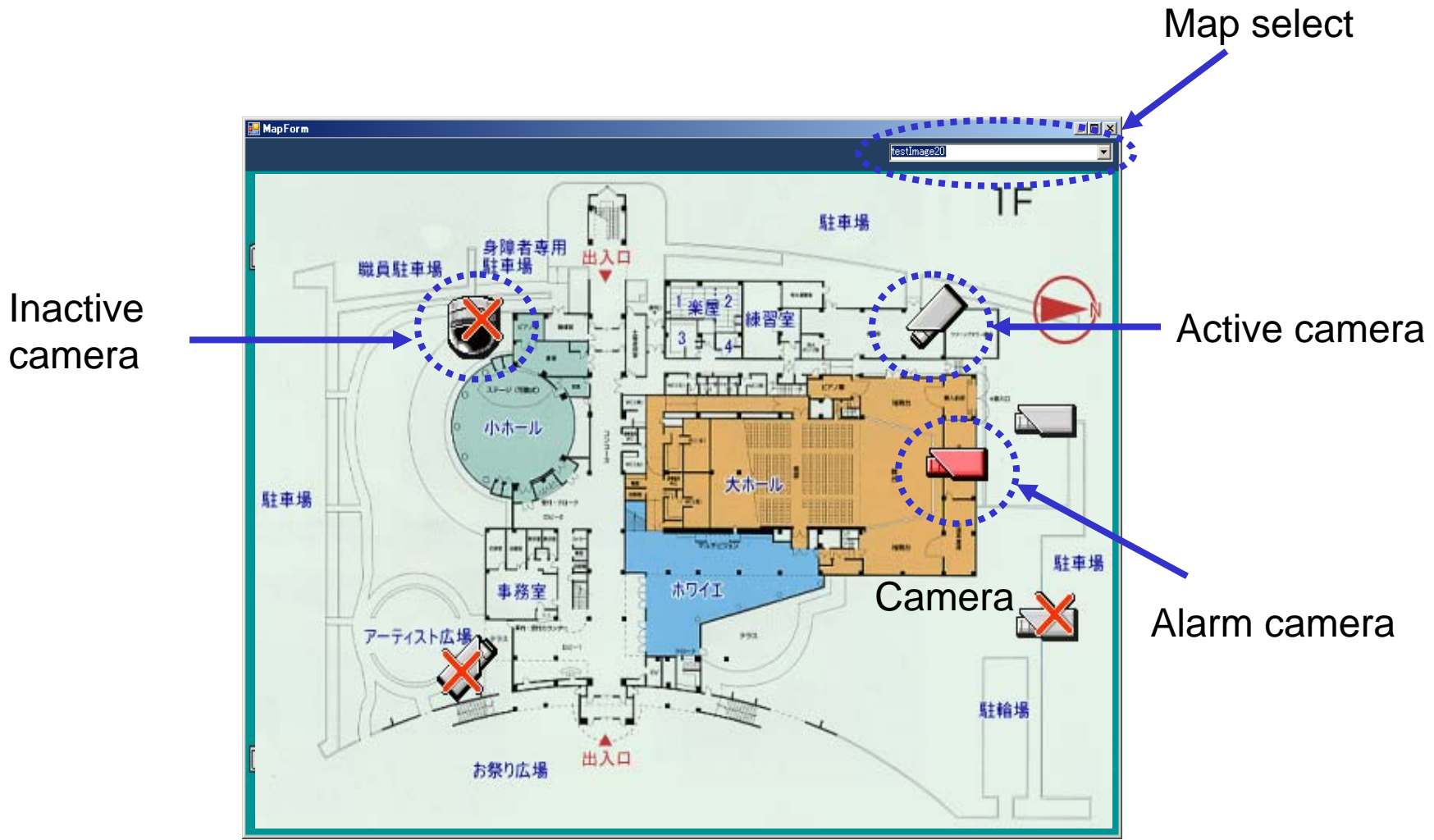
Function Panel

- Device Tree
- Group
- Sequence
- Quick playback
- Search
- Download
- Alarm log
- Recorder error log
- Network error log

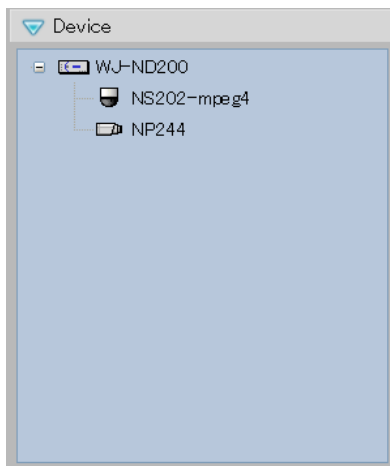


Operation Panel

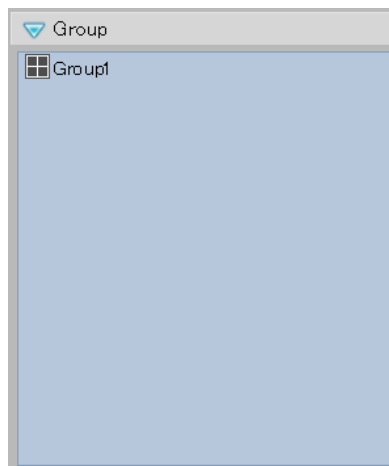
- Camera Control (Pan/tilt, Zoom, Focus, Preset, Auto, AUX)
- Playback Control (Play, FF, REV, Skip, Rec)



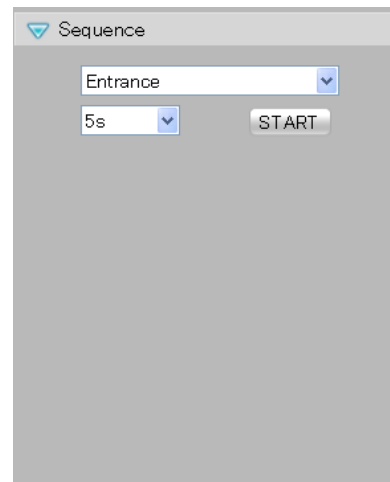
Device Tree



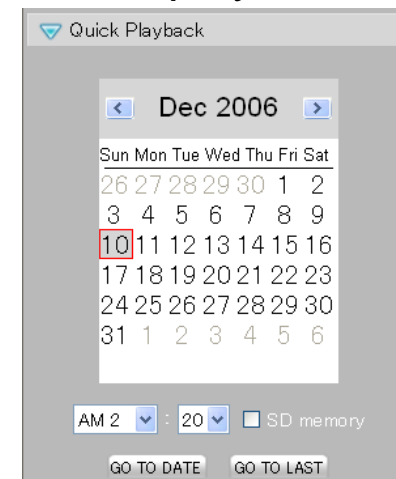
Group list



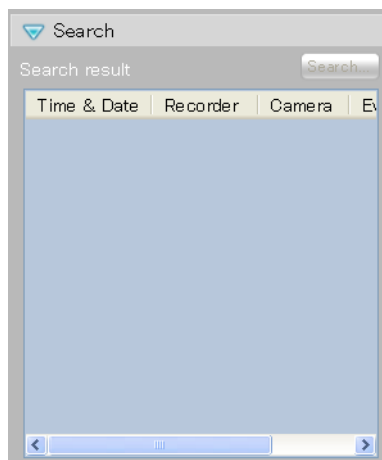
Sequence



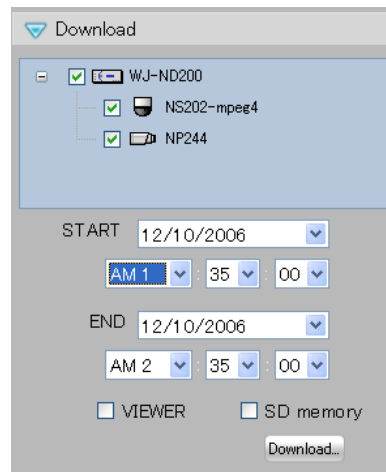
Quick playback



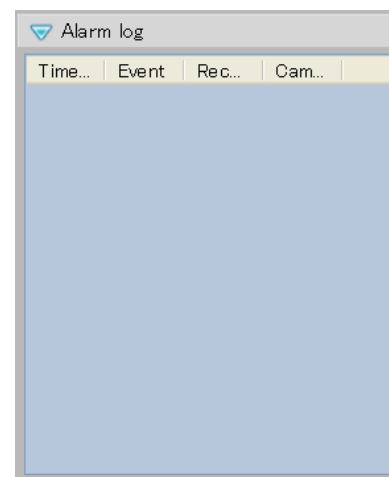
Search



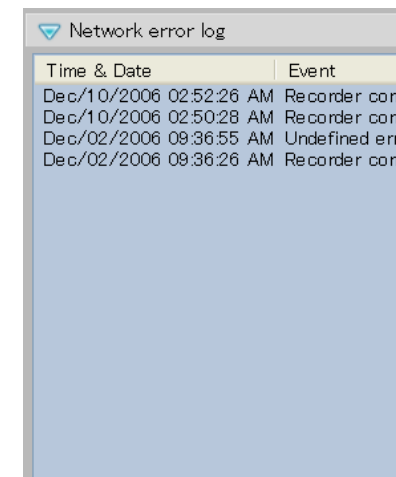
Download



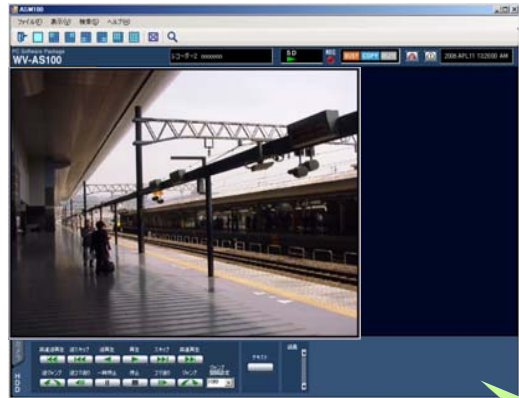
Alarm log



Network error log

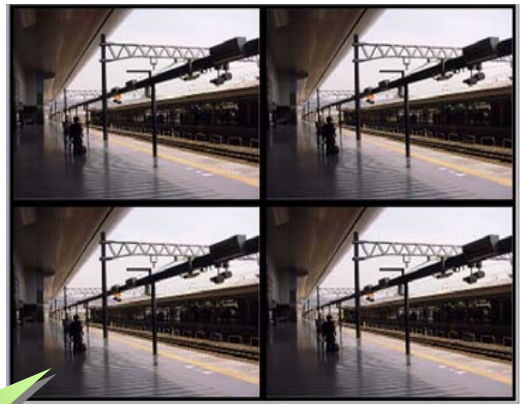


Ubiquitous Security

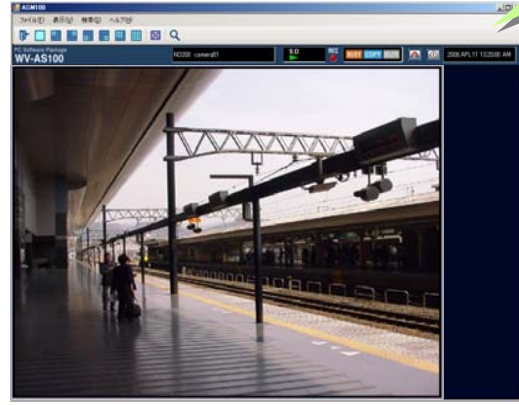


Without Control Panel

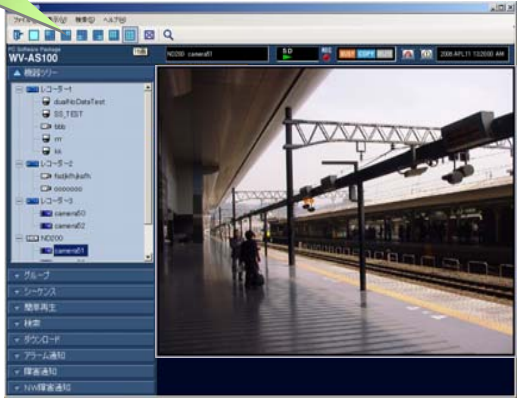
Basic Layout
Panel color can be selected



Full Screen Display

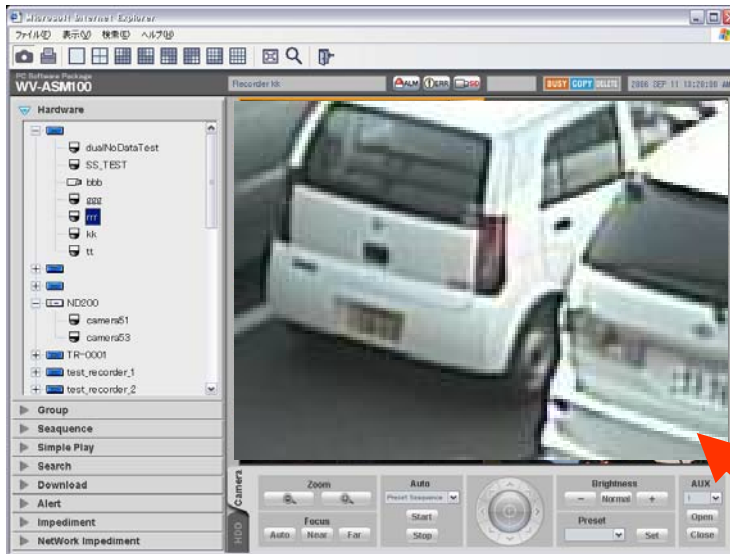


Without Panel



Without Operation Panel

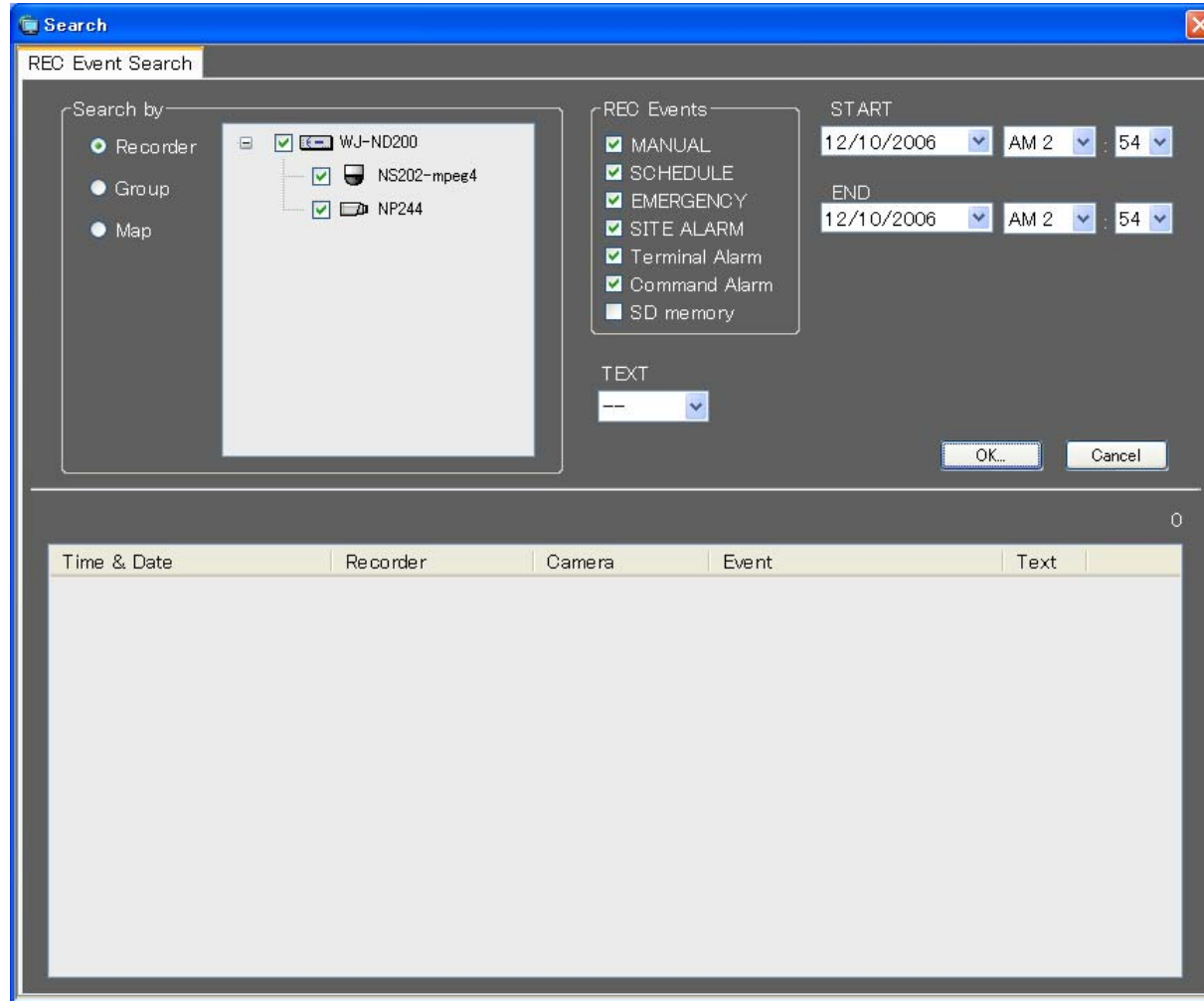
On screen PTZ Operation Feature



Wheel Zoom

Click centering: Clicking on the image will bring the point to the center of the window.

Wheel zoom: Zoom can be controlled by mouse wheel.



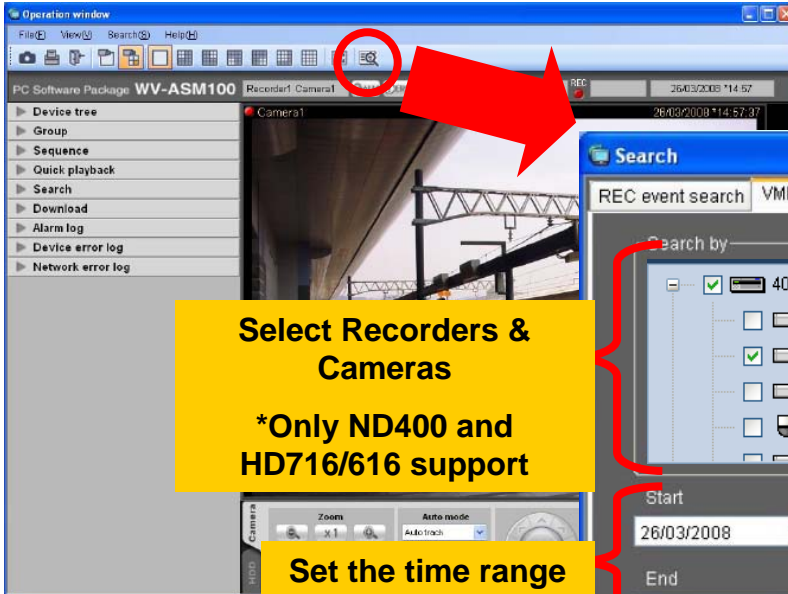
- Search by
 - Recorder & camera
 - Group
 - Map

- REC Events
 - Manual
 - Schedule
 - Emergency
 - Site Alarm
 - Terminal Alarm
 - Command Alarm
 - SD Memory

- Text function
 - With text
 - Without text

- Time & Date

Click the Search Button



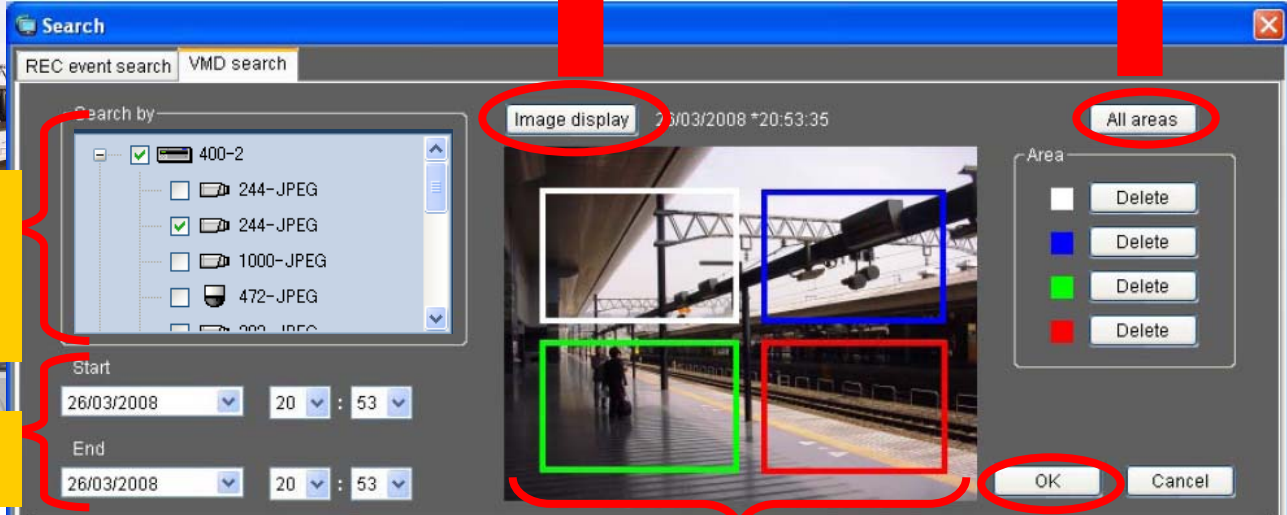
Select Recorders & Cameras

*Only ND400 and HD716/616 support

Set the time range for search

Image Display

Set the area to all angle of view



Set the VMD Area

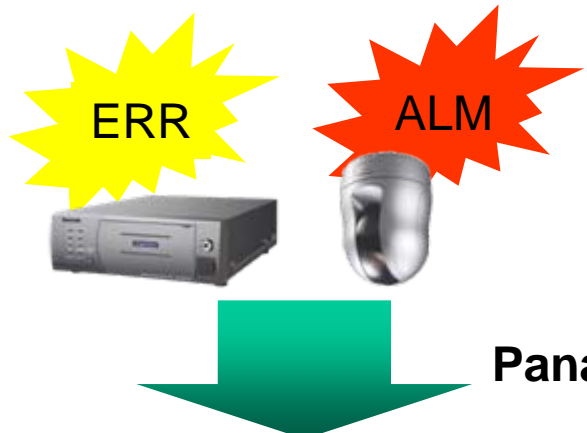
Up to 4 Areas are available.

Start VMD Search

Search Result

Time & date	Recorder	Event	Text
26/03/2008 *20:54:46	Recorder1	MAN	None
26/03/2008 *20:54:43	Recorder1	MAN	None
26/03/2008 *20:54:40	Recorder1	MAN	None
26/03/2008 *20:54:37	Recorder1	MAN	None
26/03/2008 *20:54:34	Recorder1	MAN	None
26/03/2008 *20:54:31	Recorder1	MAN	None
26/03/2008 *20:54:28	Recorder1	MAN	None
26/03/2008 *20:54:25	Recorder1	MAN	None
26/03/2008 *20:54:22	Recorder1	MAN	None
26/03/2008 *20:54:19	Recorder1	MAN	None
26/03/2008 *20:54:16	Recorder1	MAN	None
26/03/2008 *20:54:11	Recorder1	MAN	None
26/03/2008 *20:54:08	Recorder1	MAN	None
26/03/2008 *20:54:04	Recorder1	MAN	None
26/03/2008 *20:54:02	Recorder1	MAN	None
26/03/2008 *20:53:58	Recorder1	MAN	None
26/03/2008 *20:53:55	Recorder1	MAN	None
26/03/2008 *20:53:52	Recorder1	MAN	None

Alarm/Error Notification



Pop-up and Sound

Pop-up window is displayed when an alarm or an error occurred

Alarm notification

2006/10/04 02:19:48 AM 1

Recorder1

Camera1

Live Play Close

Error notification

Camera communication error. 1

Dec/10/2006 03:17:31 AM

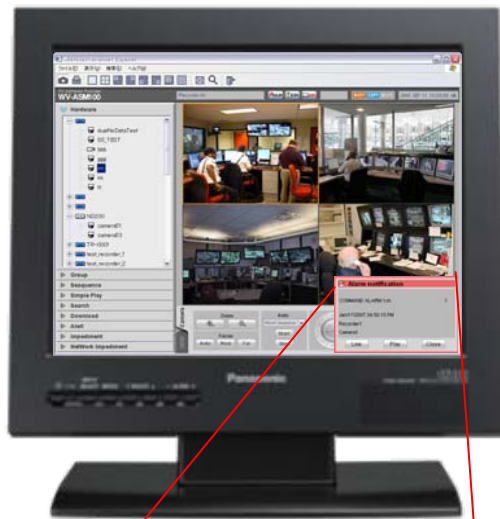
WJ-ND200

NS202-mpeg4

Close

Alarm Notification

Ubiquitous Security



Operation Display



Pop-up and Sound



Map Display



Camera Icon blink



Live Display



Alarm images are displayed on the live monitor

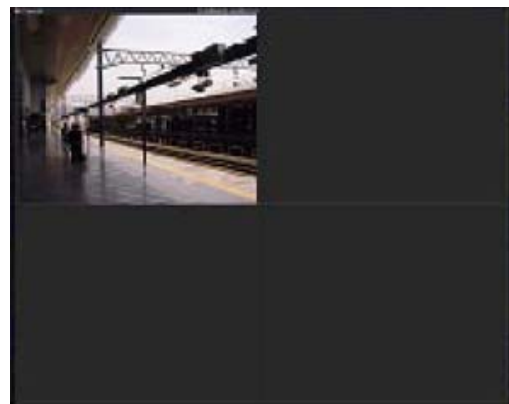
 **Alarm notification**

COMMAND ALARM 1ch 1

Jan/17/2007 04:50:15 PM

Recorder1

Camera1



Alarm Notification

Ubiquitous Security



Panasonic alarm protocol



Alarm images are displayed on the live monitor



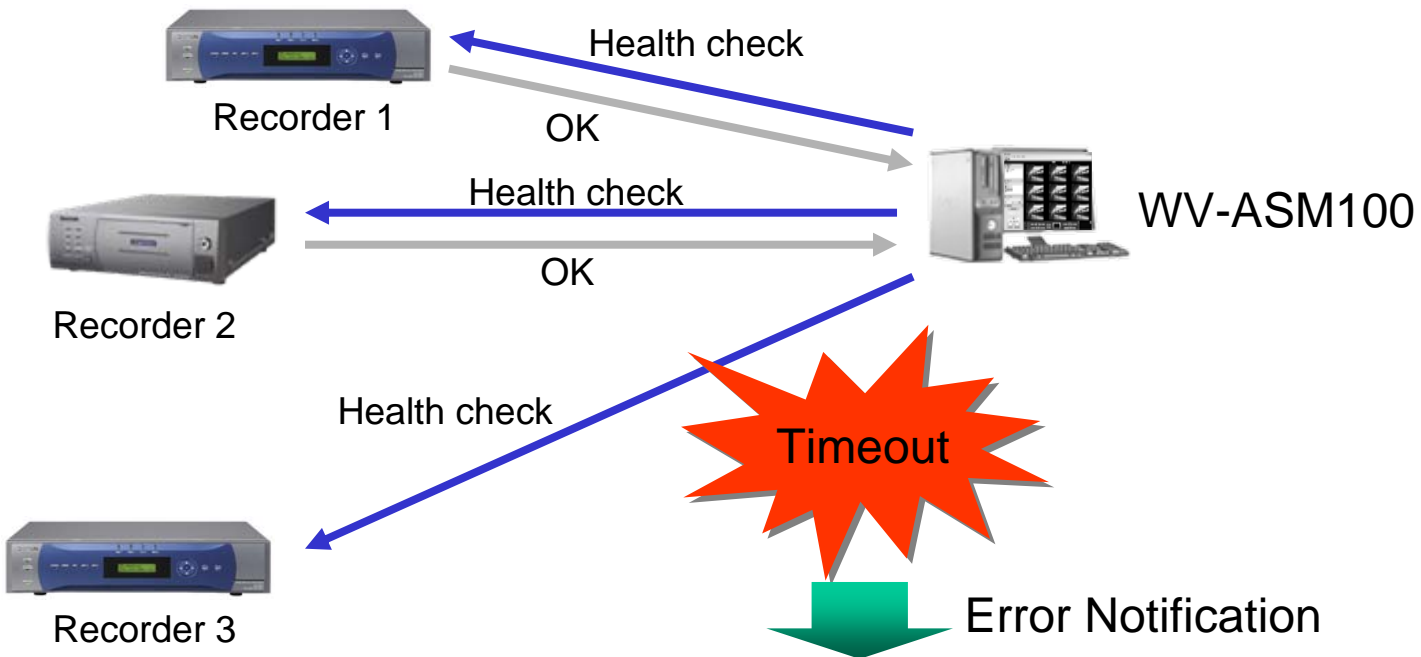
ALM1 → ALM2 → ALM3 →
ALM4 → ALM5



*Numbers of screen can be selected

Recorder Health Check

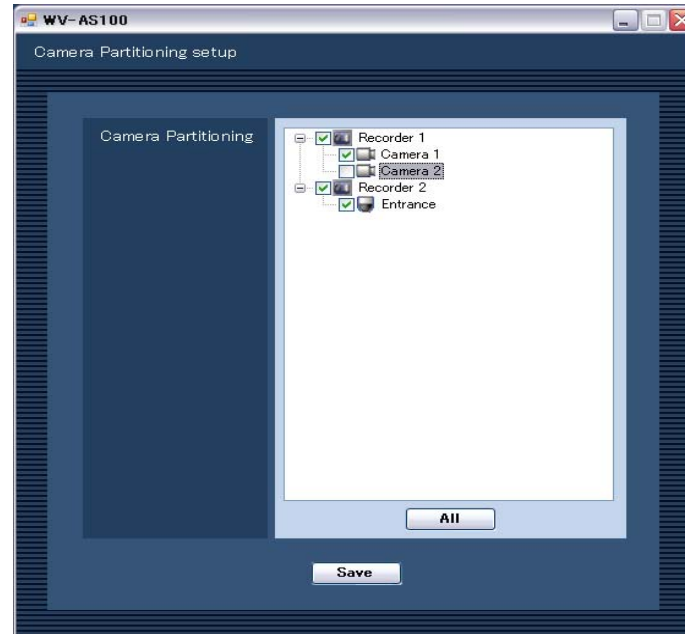
All registered recorders can be checked at constant intervals



The screenshot shows a software interface with a pop-up window titled 'Error notification'. The pop-up contains the following text: 'Recorder communication error. 1', 'Dec/10/2006 02:50:28 AM', and 'WJ-ND200'. A 'Close' button is at the bottom right of the pop-up. The background shows a multi-camera security interface.

Pop-up and Sound

Camera Partitioning Setup



User Level Setup

Level	Setup	Event Notice	Data Copy	Recorder Control	Camera Control	Live View
1	OK	OK	OK	OK	OK	OK
2			OK	OK	OK	OK
3				OK	OK	OK
4					OK	OK
5						OK

The WV-ASM100 uses one user ID at single display mode and 2 user IDs at multi display mode

WJ-ND200



Up to 4 user IDs

WJ-ND300A



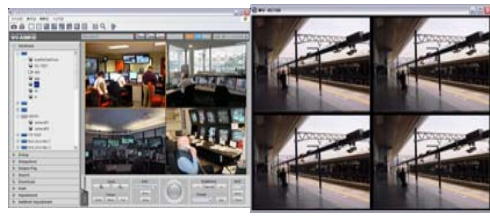
Up to 8 user IDs

WJ-ND400



Up to 16 user IDs

2 user IDs



ASM100 Multi display mode,

1 user ID



ASM100 Single display mode,
ASM100L

Log	Item
System Log	Start/End Login/Logout Auto function
Operation Log	User operation (Click, Menu select, Play, Camera control etc..)
NW Error Log	Connection error between the WV-ASM100 and devices (Timeout, Authorization, UID over etc..)
Alarm Log	Received Panasonic Protocol (ALM)
Error Log	Received Panasonic Protocol (ERR)

System Requirements

It is recommended to install this software on a PC that meets the following system requirements.

Items	Requirements
OS	Microsoft® Windows® XP Professional SP3 (32-bit) Microsoft® Windows Vista® Business SP2 (32-bit) Microsoft® Windows Vista® Business SP2 (64-bit) Microsoft® Windows® 7 Professional (32-bit) Microsoft® Windows® 7 Professional (64-bit)
OS language	English, French, Spanish, German, Italian, Russian, Chinese (Simplified Chinese)
Computer	IBM PC/AT Compatible
CPU	Intel® Core 2 Duo 2.66 GHz or faster Intel® Core™ 2 Quad Q9650 or faster (When operating H.264 images) Intel® Core™ i7-920 or faster (When operating H.264 images)
Memory	1 GB or more 3 GB or more (When operating H.264 images)
Video memory	VRAM 128 MB or more (64 MB minimum), compatible with DirectX® 9.0c
CD-ROM drive	Necessary to install this software
USB port	Necessary to connect the provided hardware key (USB dongle)
hard disk space	Approx. 3 GB
Monitor	1024 x 768 pixels or more (1280 x 1024 pixels recommended), 24-bit True color or better (Full color recommended)
Network Interface	100BASE-TX/1000BASE-T



Cost Effective Management Software



- ◆ Same functionality with ASM100 except for Live/MAP display and controller capability
- ◆ Real time monitoring in 16 screen at MPEG-4
- ◆ Up to 100 recorders can be registered
- ◆ On screen PTZ features
- ◆ Audio support (Live by camera direct, Playback by WJ-ND200)

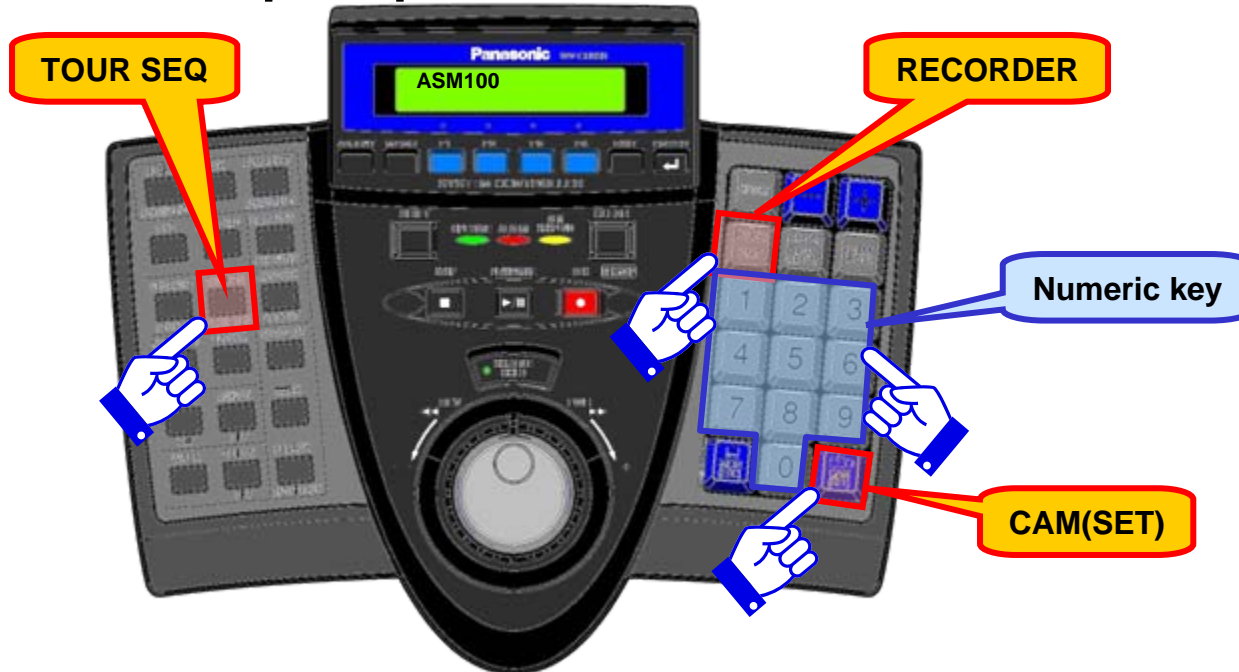
Feature Comparison

No	function	ASM100	ASM100L
1	Multi Monitor (Operation, Live, Map)	✓	N/A
2	Hardware controller (CU950)	✓	N/A
3	Map function	✓	N/A
4	Audio support	✓	✓
5	Displaying frames and trajectories of AVMD playback	✓	N/A
6	Download	✓ (Manual)	✓ (Manual)
7	# of Recorders	100 recorders	100 recorders
8	# of Users	32 + Administrator	32 + Administrator
9	9/16 Multiscreen Sequence	✓	✓
10	RT416 Support	✓	✓
11	Camera Title Display on the picture	N/A	N/A
12	Camera Preset Registration / AUX Control	✓	✓
13	Maximum Access # per recorder(ND400)	16(w/o live window) /8(w/ live Window)	16
14	# of Sequence programs	10	10
15	Multi Language Support (OS / Expression)	✓	✓

Functions Features	WV-ASM100/100L V6	WV-ASM970
		
Combination with WV-ASC970	NO	YES (specialized WV-ASC970)
Supported Devices	All i-Pro cameras / encoders DVR(*HD316A, RT416) NWDR(ND200/300/400) *Not support HD316	All i-Pro cameras / encoders DVR(HD316/316A, RT416, HD616/716)* NWDR(ND200/300/400) *need to get image via encoder
Function	Camera / Recorder operation Video switching MAP CU950 controller (only ASM100)	Camera / Recorder operation Video switching MAP CU950 controller
Multi screen	Total 20 (Ex.) Live monitor: 16 + Operation: 4	16 (JPEG/MPEG4)
Compression	JPEG / MPEG4 / H.264	JPEG / MPEG4 / H.264
Multi Monitor Support	Up to 3 monitors (Map/Live/Operation) * Only ASM100 supports multi monitors. ASM100L doesn't support it	Need 2 monitors (Operation & Map / Monitoring)
NWDR support	YES	YES
AVMD support (Video Analytics)	YES * Up to 4 screens	YES (from Sep/2010)

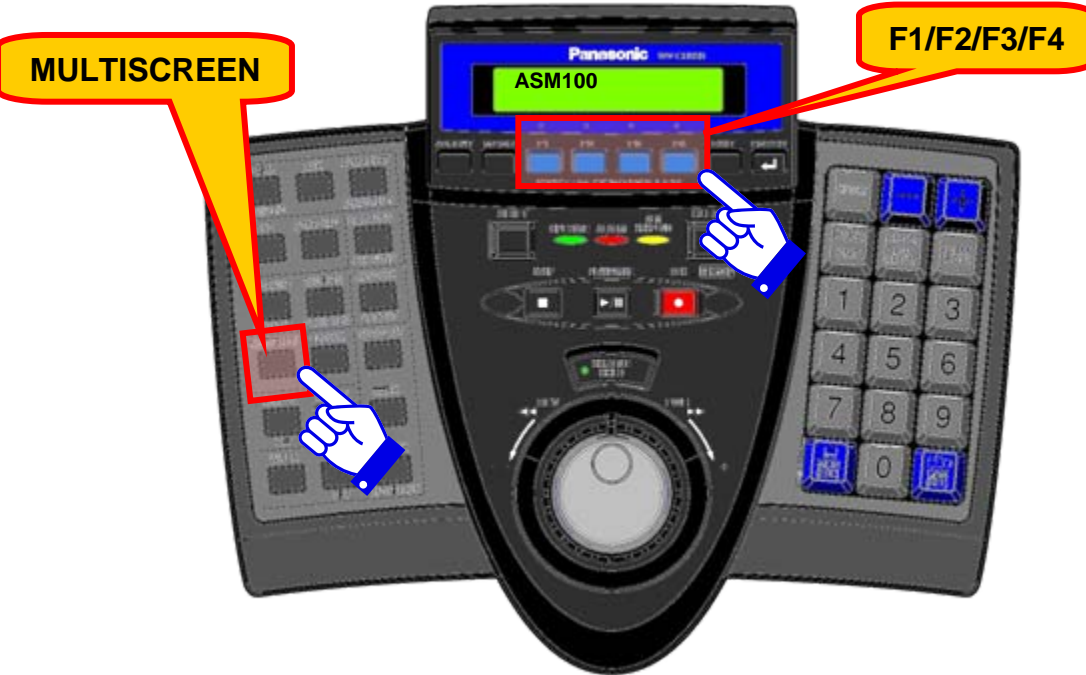
CU950 operation

Camera/Group/Sequence Selection from CU950



Item	Procedure	Setup
Camera Selection	[Camera Number] (Numeric key) -> [CAM(SET)]	Need to setup Camera Number on the setup software.
Group Selection	[Group Number] (Numeric key) -> [RECORDER]	Need to setup Group Number on the setup software.
Sequence Selection	[Sequence Number] (Numeric key) -> [TOUR SEQ]	Need to setup Sequence Number on the setup software.

Multiscreen Selection from CU950



Item	Procedure	Setup
Multiscreen Selection	[MULTI SCREEN] (1→4A→4B→4C→4D→9→16→1→...)	
	[F1] : Change to Spot Display [F2] : Switch to 4 screen Display [F3] : Switch to 9 screen Display [F4] : Switch to 16 screen Display	