

Panasonic

Ubiquitous Security



Network PTZ Dome Camera
WV-NS202A

SDIII PTZ Network Camera with Simple D/N feature

ENHANCED FEATURES FROM WV-NS202

- ◆ Simple Day/Night Feature
- ◆ Drag & Zoom Feature
- ◆ Scheduling Feature
- ◆ SD Backup Image Playback/Download
- ◆ Alarm Log Feature
- ◆ 256 Step Pan/Tilt Command Support

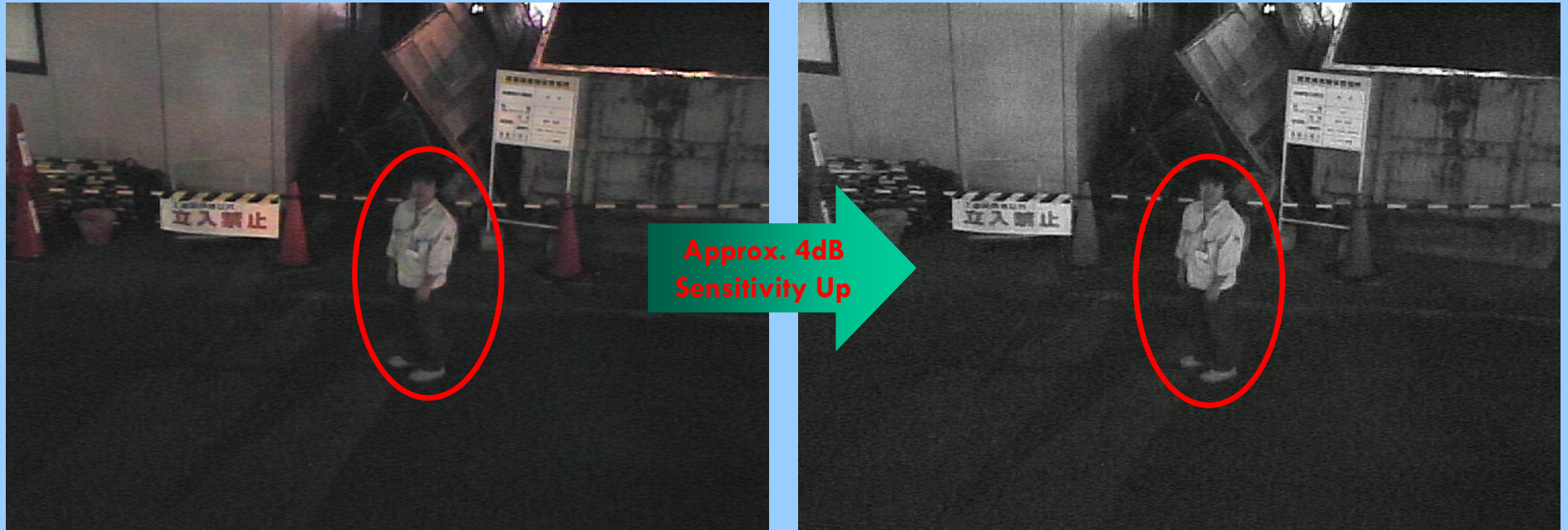


Details of enhanced features from WV-NS202

No.	Item	Spec	Comment	Correspondence by upgrade from WV-NS202
1	Simple Day/Night Feature	The chroma is cut at a low illuminance, Approx. 4dB Sensitivity Up	There is no IR cutting filter movement. Setting : OFF/AUTO (There are no alarm synchronization etc.)	×
2	Drug & Zoom Feature	Operation improvement of manual PTZ	Function that dragged range on screen does ZOOM IN. The reset button of the zoom magnification is added.	×
3	Scheduling Feature	About Alarm input permission(three terminal batch), VMDpermission, Access permission, Position refresh,and 1-64Position request demand,The scheduling function of five patterns is installed.	<ul style="list-style-type: none"> However, when "Self return" or "Manual operation" is done, the camera coordinates are irregular until the next schedule time. when the alarm is input,Access permission etc. are deleted. →Equipped with the scheduling function concerning the camera opera	○
4	SD Backup Image Playback/Download	SD preservation image restoration/download function from a browser	The image of the SD memory can be reproduced in HTML..	○
5	Alarm Log Feature	Log list display from a browser/Log Doenload/Image reproduction/Image download function	The alarm log, manual REC log, and the FTP regular transmission error log are added. UI that smoothly does image retrieval & reproduction from the log is examined.	○
6	256 Step Pan/Tilt Command Support	Operation improvement of manual PTZ (Especially, low-speed speed resolution is improved.)	The PT speed resolution in 16 stages and 256 stages is added,It prepares in the NW joystick operation improvement in the future.	○
7	Multi-language	English, German, French, Italian, Spanish, Russian, Chinese, and Polish language	<ul style="list-style-type: none"> Polish language:Only HTML ("HELP" is English) ,There is no manual. For HTML (UPLOAD method by user) Addition of Network Operating Instructions/Installation Guide to CD-ROM (Installation Guide is Only English) 	○
8	Inner Dome Cover WV-Q153(Optional Accessory)	Reduce light reflection when installing with outdoor housing	-	○
9	GOST	GOST is acquired according to A model sale.	Acquisition schedule in July, '07	-

Simple Day/Night Feature

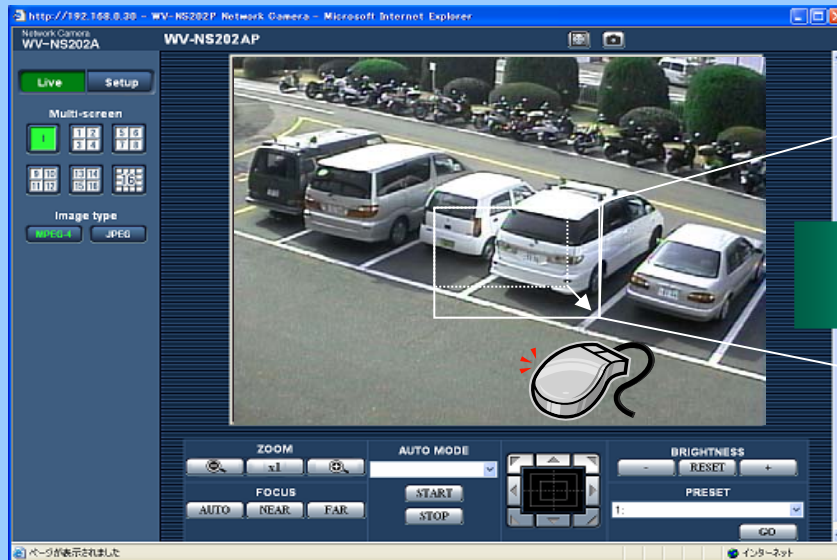
◆ Outdoor Image



Specifications of Simple D/N

- B/W switch (Auto) : Around Min. illumination@40IRE when setting gain HIGH
- Sensitivity up ratio : Approx. 4dB up
- Switch threshold time : Approx. 5 sec (fixed)

Drag & Zoom Feature



Zoom reset button

Scheduling Feature

Network Camera
DG-NS202A

Live Setup

Setup menu

- Basic setup
- Camera setup
- Miscellaneous
- Alarm setup
- Authentication setup
 - Server setup
 - Network setup
 - Schedule setup**
 - Maintenance
- Help

Schedule

Schedule setup

Schedule	MODE	Schedule
Schedule 1 (White)	OFF	<input type="checkbox"/> 月 <input type="checkbox"/> Tue <input type="checkbox"/> Wed <input type="checkbox"/> Thu <input type="checkbox"/> Fri <input type="checkbox"/> Sat <input type="checkbox"/> Sun 24 hours 00:00 ~ 00:00
Schedule 2 (Blue)	Alarm permission	<input checked="" type="checkbox"/> Mon <input type="checkbox"/> Tue <input type="checkbox"/> Wed <input type="checkbox"/> Thu <input type="checkbox"/> Fri <input type="checkbox"/> Sat <input type="checkbox"/> Sun 24 hours 10:00 ~ 17:00
Schedule 3 (Green)	OFF	<input type="checkbox"/> Mon <input type="checkbox"/> Tue <input type="checkbox"/> Wed <input type="checkbox"/> Thu <input type="checkbox"/> Fri <input type="checkbox"/> Sat <input type="checkbox"/> Sun 24 hours 00:00 ~ 00:00
Schedule 4 (Red)	OFF	<input type="checkbox"/> Mon <input type="checkbox"/> Tue <input type="checkbox"/> Wed <input type="checkbox"/> Thu <input type="checkbox"/> Fri <input type="checkbox"/> Sat <input type="checkbox"/> Sun 24 hours 00:00 ~ 00:00
Schedule 5 (Black)	OFF	<input type="checkbox"/> Mon <input type="checkbox"/> Tue <input type="checkbox"/> Wed <input type="checkbox"/> Thu <input type="checkbox"/> Fri <input type="checkbox"/> Sat <input type="checkbox"/> Sun 24 hours 00:00 ~ 00:00

SET

0:00 6:00 12:00 18:00 24:00

Mon

ページが表示されました

Scheduling items

- Alarm input
- VMD
- Image display
- Auto-tracking
- Position refresh

Up to 5 schedules
can be set

SD Backup Image Playback/Download



Playback/Download



The screenshot shows the web interface for a WV-NS202A Network Camera. The main window displays a video feed of a parking lot with several cars. On the left, there is a 'LOG' panel with a table of events:

Time & Date	EVENT
2007/02/21 11:23:31	VMD
2007/02/21 11:22:50	VMD
2007/02/21 11:22:42	VMD
2007/02/21 11:20:45	VMD
2007/02/21 11:20:40	VMD
2007/02/21 11:19:44	VMD
2007/02/21 11:16:31	VMD
2007/02/21 11:16:13	VMD
2007/02/21 11:16:07	VMD
2007/02/21 11:14:43	VMD
2007/02/21 11:13:30	VMD
2007/02/21 11:12:07	VMD
2007/02/21 11:07:06	VMD
2007/02/21 11:06:50	VMD

Below the log table, it indicates 'SD memory card 96098KB/125126KB(remainingtotal)'. At the bottom of the interface, there are playback controls (REW, REV PLAY, PLAY, FF) and navigation buttons (TOP, PREV IMAGE, PAUSE, STOP, NEXT IMAGE, LAST). A 'Download' button is also present.

256 Step Pan/Tilt Command Support



Inner Dome Cover

- ◆ WV-Q153(Optional Accessory)

Reduce light reflection when installing with outdoor housing

