

To customers using the optional extension for video analytics

About the user manual

This document is the operating instructions for the users who manage the optional extension for Video analytics (hereinafter options) using the PC Software Package WV-ASM200 Series (hereinafter this software). By registering this option, functions of heat map (staying map/passing map) and people count will become available. This document describes only the major available operations when managing the options. Refer to WV-ASM200 Series Operating Instructions (PDF) and Setup Instructions (PDF) for the basic performance and operations of this software. The descriptions in the following pages are based on the assumption that Microsoft® Windows® 7 Professional runs on a PC.

Operation windows may not be the same as those appearing on the pages when a different OS is used or different settings are applied.

When using other OS, refer to the operating instructions of the respective OS.

About the optional registration

To use these options, registration is required. To register the options, it is necessary to enter the "Registration Key" obtained from the Key Management System. Refer to the provided "Activation Key Card" to obtain the "Registration Key" of this software. Enter the following numbers for the startup ID and the registration ID.

Activation Key No.: 0405-0065-000B-1234

Registration ID: 25D5-7547

The optional extension for video analytics can be operated in the trial version using a fixed Registration Key. The trial period is 90 days from the date of registration.

To activate the optional extension for video analytics in the trial version, register the following Registration Key in the "Registration of license" window.

Registration Key for trial: 0000-0040-0000-0001

To use the options, WV-ASM200 **Ver.3.30 or later** (option) is required.

Refer to "WV-ASM200 Series Setup Instructions (PDF)" for how to register the options for the product in use.

Compatible devices

These options are compatible with the following devices.

Compatible cameras

Model	Appears in this document as	Version	Compression
WV-SFN480	9M Fisheye network camera	1.12 or later	H.264
WV-SFV481			

Note:

- To use this option, Extension Software (WV-SAE200 TYPE3 Ver.1.05 or later) needs to be installed in the camera. Refer to the operating instructions of WV-SAE200 for installation.
- When obtaining the heat map data and person counting data from the camera (when there is a difference in the previously downloaded data), download speed can be increased by using the following firmware version.
 - WV-ASM200: Ver.4.10 or later
 - Camera's firmware: Ver.2.02 or later
 - i-VMD extension software for network camera (WV-SAE200 TYPE3): Ver.1.20 or later

Using the heat map display function

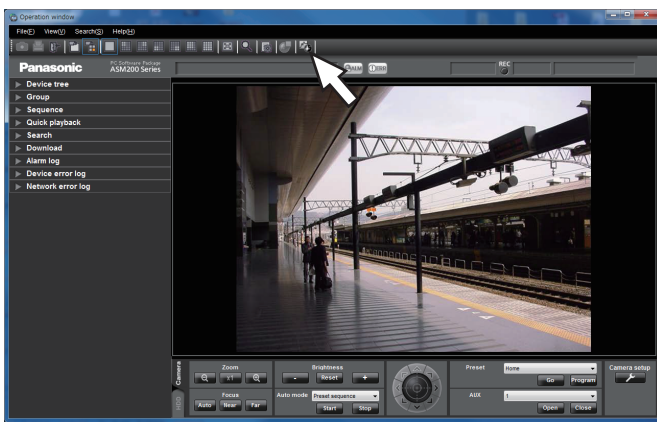
The heat map display function will visualize the passing and staying density of people.

- Data will be acquired according to the specified camera, period, and area. Also the still picture of passing or staying map will be displayed.
- Passing or staying data can be compared easily, since the map can be switched by specified time, days (previous day/day after), or per week in data acquiring range.
- The maximum period for acquiring heat map data is one month.
- The still picture of heat map can be output.

Display still picture of heat map acquired from the specified camera

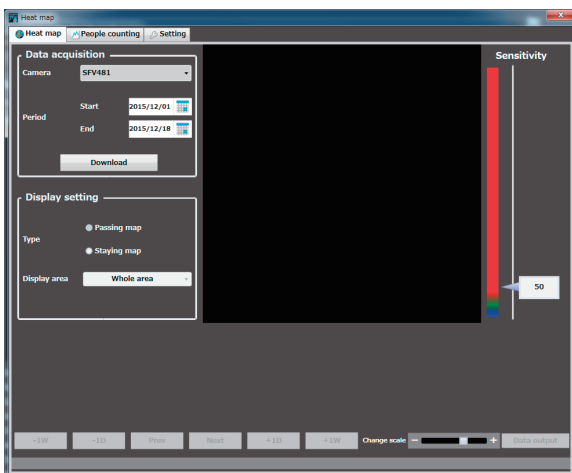
Step 1

Click the [Heat map] icon on the operation window.



Step 2

Click the [Heat map] tab.

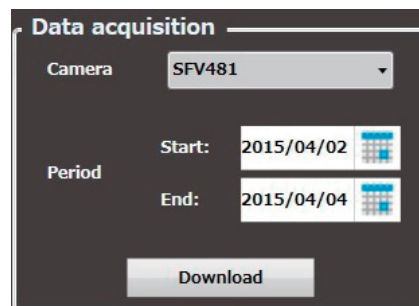


Note:

- In this window, "Large (200%)" for "Operation window display size" of the setup software is invalid. Refer to the WV-ASM200 Setup Instructions (PDF) for further information.

Step 3

Set up conditions for acquiring heat map data.



■ Camera

Select the camera to acquire heat map data. Only the cameras that support the heat map function registered to ASM200 can be selected.

■ Period

Start: Select the starting date for acquiring heat map data from "2005/1/1" to "2034/12/31". The default is a day before the set date of PC.

End: Select the end date for acquiring heat map data from "2005/1/1" to "2034/12/31". The default is the same date as the set date of PC.

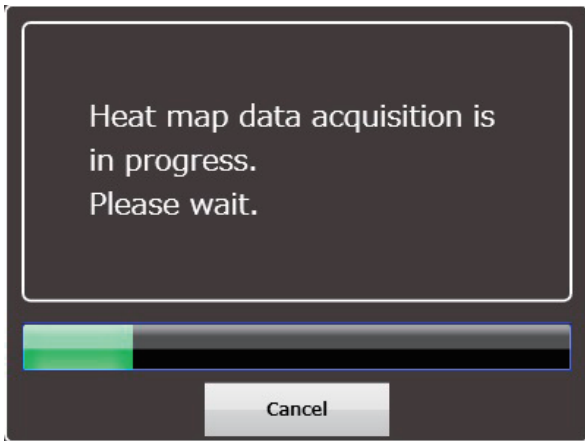
Note:

- The maximum period for acquiring heat map data is one month. If over one month is specified, an error message will be displayed.

Step 4

Click the [Download] button.

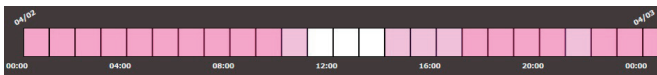
→ The Heat map data acquisition window is displayed, and download will be started. To cancel the download, click the [Cancel] button.



Note:

- The acquired data will be saved to the PC where ASM200 is installed.
- To acquire longer period of data, the longer time is required for download.
- The data can be acquired only when the heat map function is enabled in the camera setting.

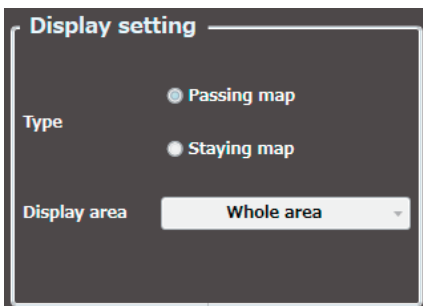
The timeline will be displayed when the download is complete.



On the timeline, the time zone where the heat map data exists will be colored.

Step 5

Select "Type" and "Display area" for displaying heat map data.



Type

Select the type from the following.

Passing map: Represents the density of moved people in colors on the screen. The more people moved, the more reddish the area becomes.

Staying map: Represents concentration of people on the screen. The more people concentrated, the more reddish the area becomes.

Display area

Select the preset display area.

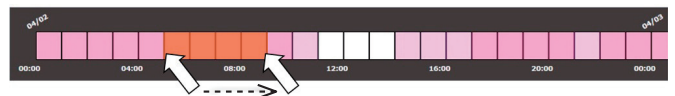
Note:

- For settings "Preset1 setting" to "Preset4 setting", refer to "Set up heat map display area" (page 12).

Step 6

On the timeline, specify the time zone for displaying a heat map image.

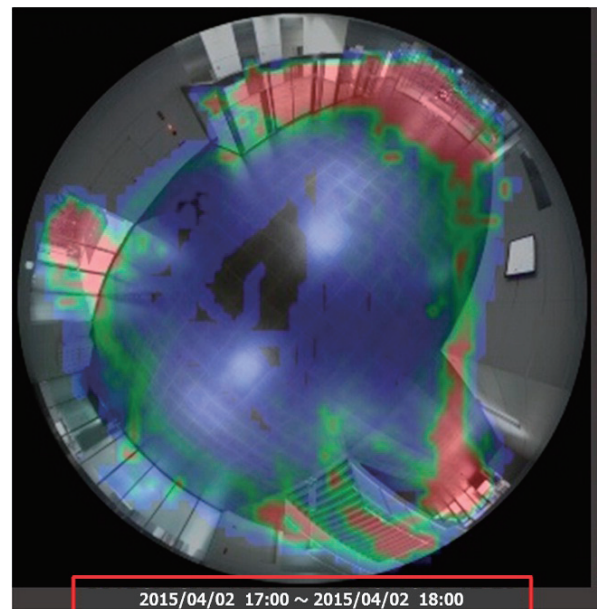
To specify the time zone, left-click at the starting time and drag to the end time. The color of the selected time zone will be changed.



- When the mouse click is released at the end time, the time zone is set and the heat map image will be displayed.
- The scale of the timeline can be changed for 15 minutes, 1 hour, 12 hours, or 1 day by operating the "Change scale" slider.



- The specified time on the timeline will be displayed at the bottom of the heat map image.



Switch (jump) the display period of the heat map image

The displayed heat map image can be switched, for example, to the one with the same time zone of the previous day or a day after.



- -1W/+1W : Switches the displayed heat map image to the one with the same time zone of the previous week or a week after.
- -1D/+1D : Switches the displayed heat map image to the one with the same time zone of the previous day or a day after.
- Prev/Next : Switches the displayed heat map image to the one with the previous or following time zone.

Note:

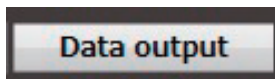
- Only the downloaded period can be displayed.
-

Output heat map image

The displayed heat map image can be output in a JPEG file.

Step 1

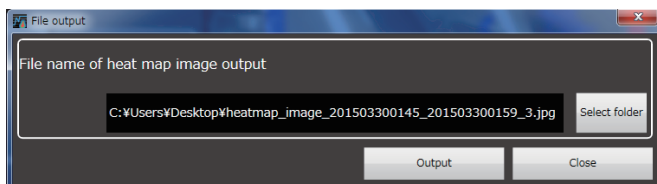
Click the [Data output] button while displaying the heat map image to be output.



→ The "File output" window will be displayed.

Step 2

Check the saving destination and the file name for the heat map image to be output.



To change the saving destination and the file name of the heat map image to be output, proceed to Step 3. If no change is required, proceed to Step 4.

Note:

- The default file name of the heat map image will be as follows.
Example) For the image of the period of
2015/03/10 13:00 to 18:00
heatmap_image_201503101300_201503101800.jpg
 - The heat map image will be saved by the size of "320x320".
-

Step 3

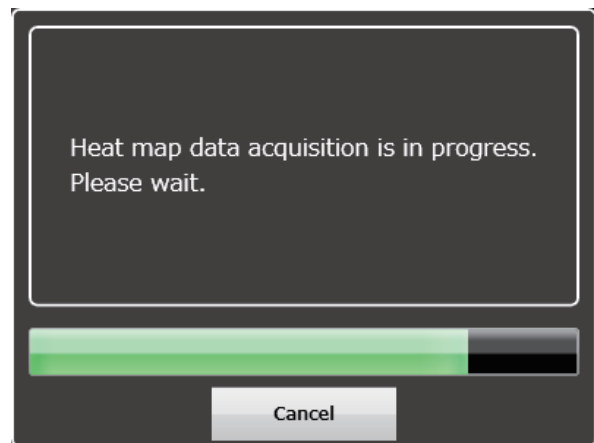
Click the [Select folder] button.

→ Specify a folder to store the file.

Step 4

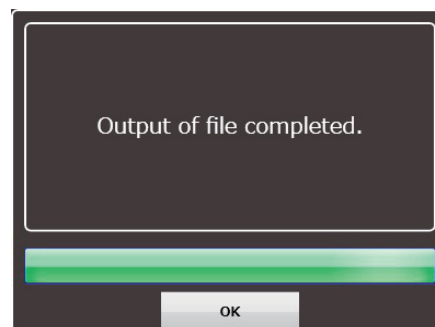
Click the [Output] button.

→ The heat map data output window is displayed, and the output of the heat map image will start.



Step 5

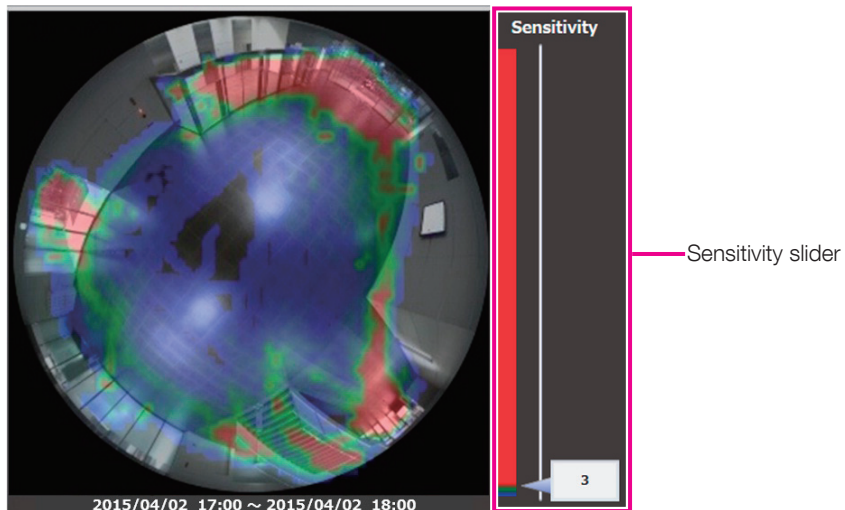
When the output of the file is complete, click the [OK] button.



→ The window for the heat map image will be restored.

Adjust the sensitivity of the heat map image

Set the maximum sensitivity for the heat map image by operating the sensitivity slider.



Move the "<" indicator of the sensitivity slider.

Note:

- Number input is available for the sensitivity.
-

Use people count function

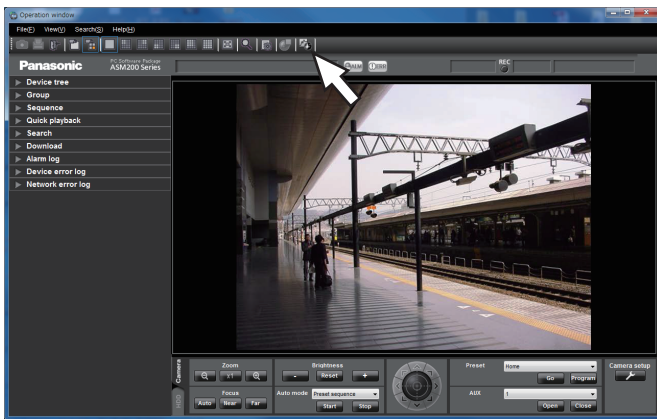
The People count function visualizes the number of passing people.

- It will display a still picture, graph, or table indicating people who crossed the line of the specified camera.
- The maximum period for acquiring people count data is one month.
- The displayed graph or table can be output in an Excel file, and the still image can be output in an JPEG image file.

Display still picture of people count acquired from the specified camera

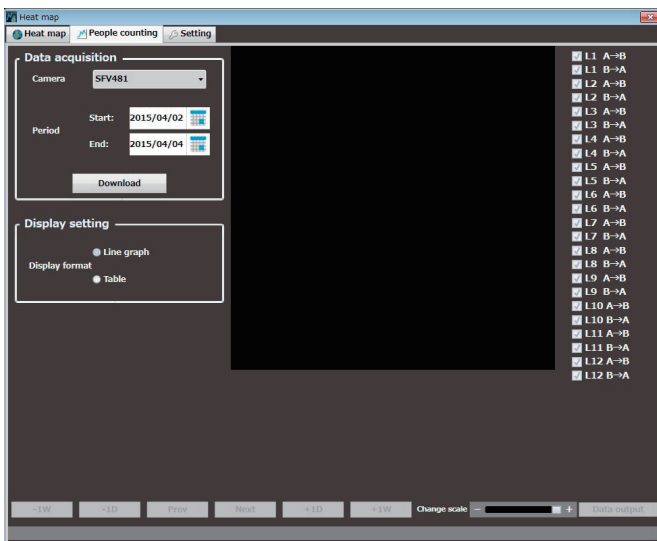
Step 1

Click the [Heat map] icon on the operation window.



Step 2

Click the [People counting] tab.

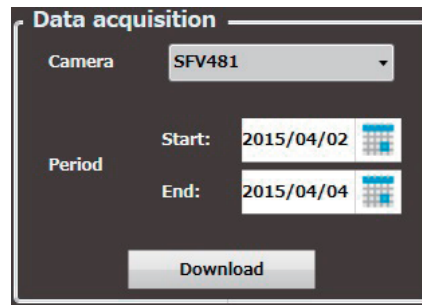


Note:

- In this window, "Large (200%)" for "Operation window display size" of the setup software is invalid. Refer to the WV-ASM200 Setup Instructions (PDF) for further information.

Step 3

Set up conditions for acquiring people count data.



■ Camera

Select the camera to acquire people count data. Only the cameras that support the heat map function registered to ASM200 can be selected.

■ Period

Start: Select the starting date for acquiring people count data from "2005/1/1" to "2034/12/31". The default is a day before the set date of PC.

End: Select the end date for acquiring people count data from "2005/1/1" to "2034/12/31". The default is the same date as the set date of PC.

Note:

- The maximum period for acquiring people count data is one month. If over one month is specified, an error message will be displayed.

Step 4

Click the [Download] button.

- The people count data acquisition window is displayed, and download will be started. To cancel the download, click the [Cancel] button.

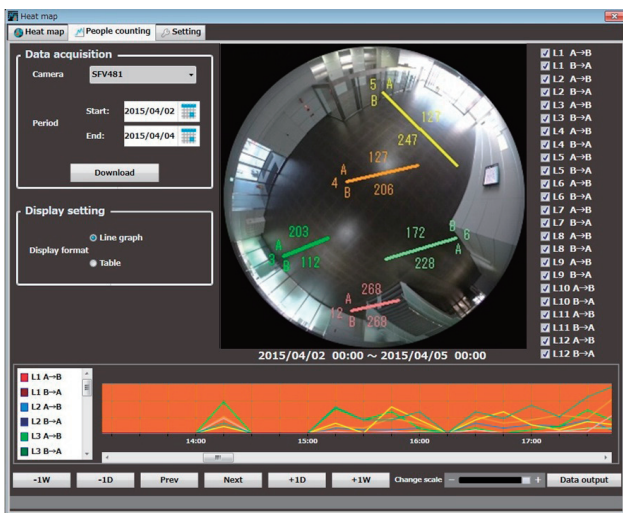


Note:

- The acquired data will be saved to the PC where ASM200 is installed.
- To acquire longer period of data, the longer time is required for download.
- The data can be acquired only when the people count function is enabled in the camera setting.

Step 5

The image of people count and graph will be displayed when the download is complete.



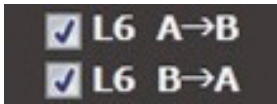
- The lines for counting people will be displayed on the image area.
- The lines can be displayed or hidden with the checkbox provided for each line. To display the line, mark the checkbox. All checkboxes are marked in the default. After the checkbox status is changed, the setting will be kept when the image is displayed next time.
- The graph will show the data of the line whose checkbox is marked.

Note:

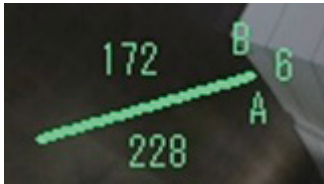
- The maximum number of lines that can be specified for people count is 12 (for 24 directions).
- Specify the line for people count in the setup of the camera.

How to count people in the image area

Example) When the checkboxes "L6 A→B" and "L6 B→A" are marked



The line "6" will be displayed in the image area. The number of people moved in the direction of A to B, and B to A will be displayed.



In the above example, "172" represents the number of people moved in the direction of A to B, and "228" represents the number of people moved in the direction of B to A.

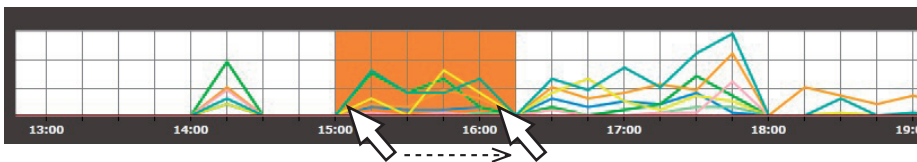
Note:

- The correct people count may not be displayed if downloaded data contains a period where no lines are set with the camera or the number of lines or its position is changed. Use the people count function after setting lines with the camera.
-

Select a time zone to display the cumulative total number

On the graph, specify the time zone for displaying the cumulative total number in the image area.

To specify the time zone, left-click at the starting time and drag to the end time. The color of the selected time zone will be changed.

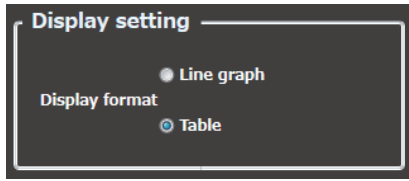


- When the mouse click is released at the end time, the time zone is set and the cumulative total number will be updated.
- The scale of the graph can be changed for 15 minutes, 1 hour, 12 hours, or 1 day by operating the "Change scale" slider.

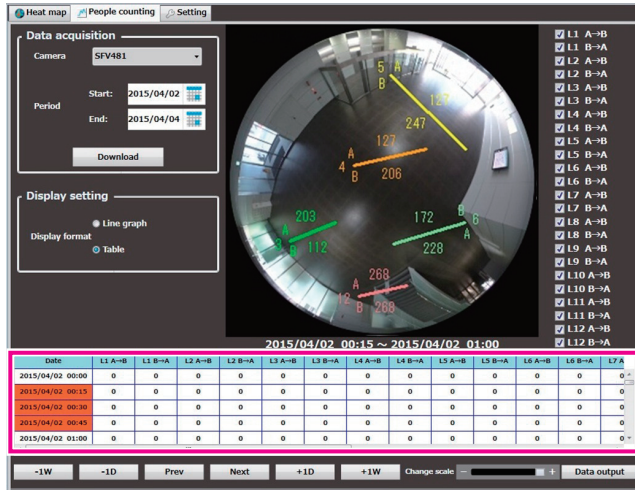


Display the table of people count

Select the display format in "Display setting".



When "Table" is selected, the graph area will be changed to a table.



Select a time zone to display the cumulative total number

In the table, specify the time zone for displaying the cumulative total number in the image area.

To specify the time zone, left-click at the starting time and drag to the end time. The color of the selected time zone will be changed.



- When the mouse click is released at the end time, the time zone is set and the cumulative total number will be updated.
- The scale of the table can be changed for 15 minutes, 1 hour, 12 hours, or 1 day by operating the "Change scale" slider.

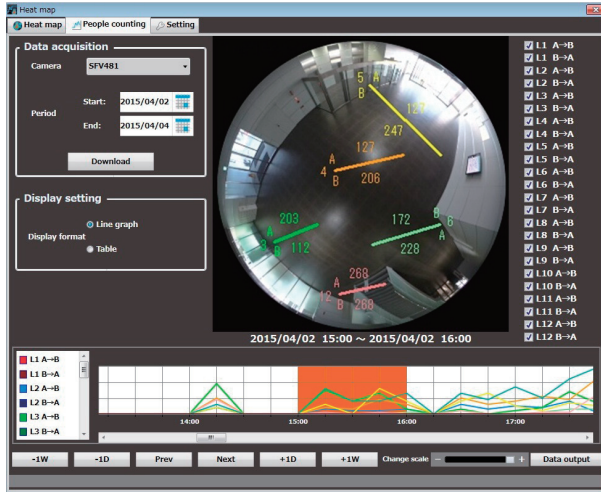


Output data and image of people count

The displayed graph, table, and still image can be output and saved.

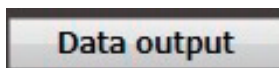
Step 1

Display the graph, table, and still picture to save by specifying the desired time zone.



Step 2

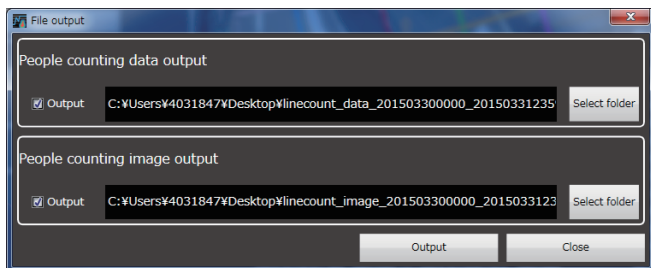
Click the [Data output] button.



→ The "File output" window will be displayed.

Step 3

Check the saving destination and the file names for the people count data and the image to be output.



To change the saving destination and the file names of the people count data and the image to be output, proceed to Step 4. If no change is required, proceed to Step 5.

Note:

- With the PC where Microsoft Excel 2010 or later is installed, the file will be saved in XLSX format. If Microsoft® Excel® 2010 or later is not installed, the file will be saved in CSV format.
- The people count data will be saved in an Excel file.
The default file name of the people count data will be as follows.
Example) For the data of the period of 2015/03/10 13:00 to 18:00
Linecount_data_201503101300_201503101800.xlsx
- The people count image will be saved in a JPEG format.
The default file name for the people count image will be as follows.
Example) For the image of the period of 2015/03/10 13:00 to 18:00
Linecount_image_201503101300_201503101800.jpg
- The people count image will be saved by the size of "320x320".

Step 4

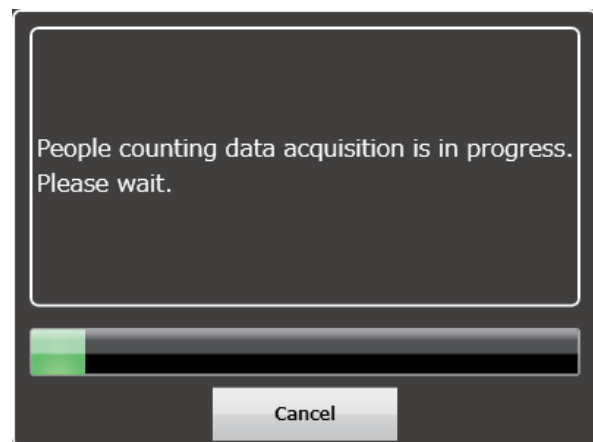
Click the [Select folder] button.

→ Specify a folder to store the file.

Step 5

Click the [Output] button.

→ The people count data output window is displayed, and the data and image output will start.



Step 6

When the output of the file is complete, click the [OK] button.



→ The people count window will be restored.

Set up heat map and people count functions

Set up the heat map and people count functions.

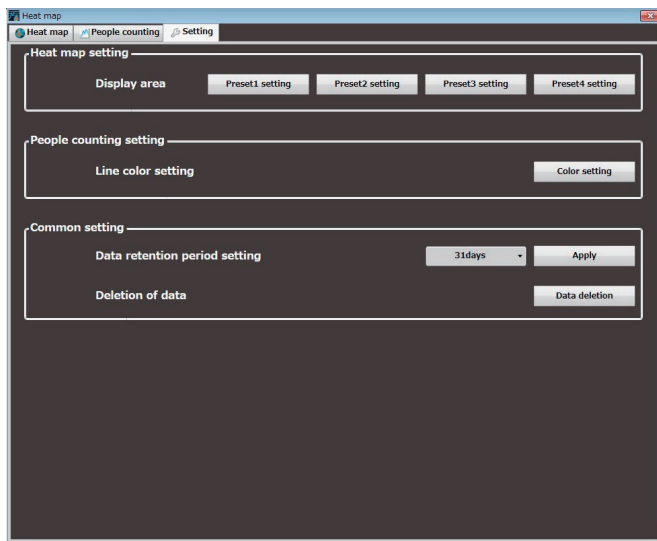
Note:

- If the options are not terminated properly, the previous settings or default settings may be restored.

Set up heat map display area

Step 1

Click the [Setting] tab.



Step 2

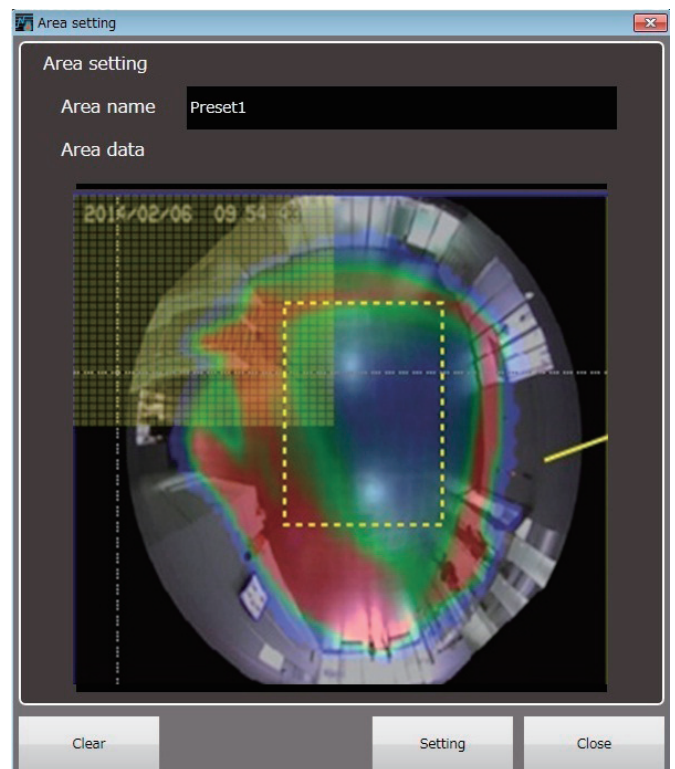
Click one of the preset buttons ([Preset1 setting] to [Preset4 setting]) of the "Display area" in the "Heat map setting".



→ The "Area setting" window will be displayed.

Step 3

Specify an area by dragging the mouse on the image. The specified area will be framed.



- The "Area name" can be changed.
- When the [Clear] button is clicked, the specified area will be cleared.

Step 4

Click the [Setting] button to set the area. The setting will be saved in the preset number selected in Step 2.

Note:

- Area setting is available for the selected camera images in the heat map window.
- Four areas at maximum can be set for a camera image.

Set up the line color of the people count

Step 1

Click the [Setting] tab. (☞ Page 12)

Step 2

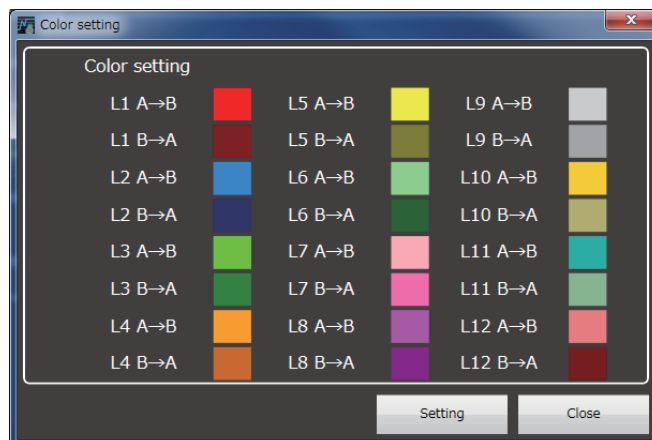
Click the [Color setting] button of the "Line color setting" in the "People counting setting".



→ The "Color setting" window will be displayed.

Step 3

Click the color of the line to be changed. The respective color setting page will be displayed.



Step 4

Click the [Setting] button.

Set up data retention period

Step 1

Click the [Setting] tab. (☞ Page 12)

Step 2

For "Data retention period setting" in "Common setting", select a data retention period for the heat map and people count data from the following.

31 days/ 92 days/ 184 days/ 366 days



Step 3

Click the [Apply] button.

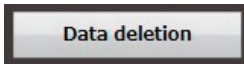
Delete data

Step 1

Click the [Setting] tab. (☞ Page 12)

Step 2

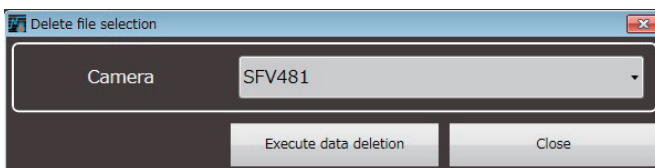
Click the [Data deletion] button of the "Deletion of data" in "Common setting".



→ The "Delete file selection" window will be displayed.

Step 3

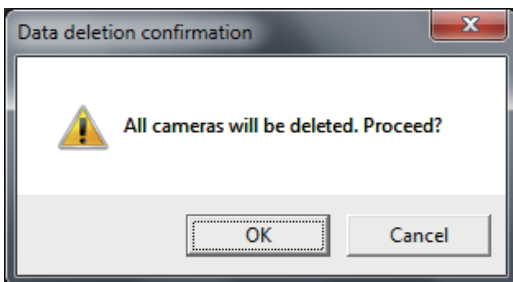
After selecting the camera whose data to be deleted, click the [Execute data deletion] button.



→ The confirmation window will be displayed.

Step 4

Click the [OK] button.



→ The heat map and people count data in the PC will be deleted.