

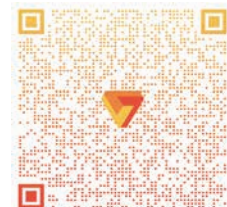
PRO



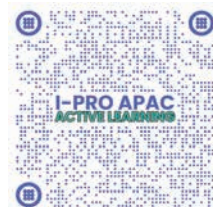
VIDEO INSIGHT 7



i-PRO
Global Website



Video Insight
Website



Active Learning
Enrollment Page



VIDEO INSIGHT

VIDEO MANAGEMENT SOFTWARE

Protect Your Assets and Minimize Risks with the Complete Surveillance Solution

Video Insight is the latest in surveillance technology integrating powerful enterprise VMS features, hardware optimization and cost efficiency in one robust system.

Harnessing the capabilities of pure **64-bit VMS**, Video Insight optimizes your hardware to allow endless scalability, unlimited client workstations, simple integration with legacy systems, centralized administration, standby server and more.

With current deployment in law enforcement, commercial, education, healthcare and transportation industries, Video Insight continues to provide you optimal solutions to meet your security demands.

Video Insight meets your demand for an advanced Video Management System with a powerful complete configuration of enterprise-level **reliability**, unlimited **scalability**, hardware optimization and **cost-efficiency** as an **easy-to-use** surveillance solution.

Advanced surveillance features eliminate uncertainty and improves response times. Every feature provides direct user benefits to your surveillance operations.



MAXIMIZING BENEFITS FOR THE USER



Easy Integration With Your Hardware

Video Insight is engineered on an open architecture, providing support for over 5000 camera models from over 150 camera manufacturers.

An open platform not only provides easy integration with your surveillance workflow, but also encourages a hassle-free migration without extensive training and instruction.



Easy Integration With Your Hardware

Designed as a multi-viewer platform, Video Insight grants users the ability to monitor cameras remotely on various operating systems including platforms such as, Windows, Mac, Web browsers, iOS and Android.

The user-friendly graphical interface makes it easy for users to operate intuitively and efficiently.



AI- Video Motion Detection (AI-VMD)

AI differentiates between people, vehicles, and two-wheeled vehicles. It further detects and sends warning notifications when they enter a specified area. It can also count the number of times the target object crosses line.

Intruder Detection - Issues an alarm when a moving object enters a specified area.

Loitering Detection - Issues an alarm when a moving object enters a specified area and stays there for a specified amount of time

Cross-line Detection - Issues an alarm when a moving object enters a specified area and moves in the specified direction.

Direction Detection - Issues an alarm when an object moving in the specified direction crosses a specified threshold



AI People/Vehicle/ Face Detection

These analytics allow you to detect people, vehicles, faces, and send the metadata and best images to the server.

They are compatible with i-PRO Active Guard, a search function that quickly finds people or vehicles of interest.

Max. detection number at the same time:

People: 20, Vehicle: 20, Face: 8

Min. illumination level:

People: 10 lux, Vehicle: 5 lux, Face: 100 lux



AI On-site Learning

It allows to enhance AI analysis by adding target object and improving accuracy.

You can add customized objects to detect using on-site camera footage through simple learning process.

Supported camera:

WV-X15xxx, WV-X22xxx, WV-X25xxx (New X-series Camera)

No. of learning images required: 10 - 200 images

No. of target to be added: Up to 5 targets



AI- Scene Change Detection

It can define/learn the normal scene for each camera and output an alarm when it is determined to be abnormal.

Left Behind object: If the normal status is an empty area, the application will notify when a stationary object is left behind.

Door Movement: If the normal status is a closed door, the application will notify when the door is left open for a defined period of time.

Parking Vacancy: If the normal status for a spot is set to 'occupied', the application will notify when the spot is vacant.

Out of stock product: If the normal status is set to 'full shelf', the application will notify when the shelf is empty or low, as defined.



AI Processing Relay

It enables to turn "non-AI camera" into "AI camera" without any re-installation costs.

This software receives MJPEG data from other cameras, and performs alarm reception and image search with i-PRO Active Guard.

Supported camera:

i-PRO camera, Other Company Camera

No. of apps to be installed: Up to 3 apps



AI Occupancy Detection

It counts the number of people in a specified area and issues an alarm when the number exceeds a specified threshold. Information of the number of people in the area can be output externally via HTTP or MQTT.

Detection area: Max. 4 areas (polygonal)

Max detection number at the same time: 40 people/area

Detection time: 1 to 600 sec/area



AI- Privacy Guard

To protect privacy and portrait rights, it is possible to automatically apply a mosaic the entire face and figure of a person photographed by the camera.

Privacy Guard target: Face, Human

Masking method: Blurring, Block



AI- Sound Classification

AI detects and identifies (gunshot / yell / vehicle horn / glass break) sound. It then sends a warning notification according to the sound identified.

Classification target: Gunshot, Yell, Vehicle Horn, Glass Break
External Microphone (Ominidirection) is required; supports 200 Hz to 8 KHz

ENHANCED HARDWARE & SOFTWARE CAPABILITY



Advanced Bundled VMS Features

Video Insight features a central management interface, VI Monitor Plus, which comes with a wide array of features.

Additional Enhanced features include the Video Wall, Health Monitor, Automated Failover, Active Directory LDAP, Access Control Integration, i-PRO Active Guard integration and Software Development Kit (SDK).

Additionally an advanced Guard Tour feature ensures operators perform scheduled security checks at designated times, along with a powerful Rules Manager which can create unique automated functions to reduce operator's workload.



Optimised Hardware Allows Unlimited Scalability

Engineered as a pure 64-bit system, Video Insight maximizes hardware capability resulting in increased efficiency across all system features.

A key factor in hardware optimization is Video Insight's efficiency, which can allow up to 300 cameras per server*, with an unlimited number of clients and storage size. This provides the users of Video Insight with the potential easy unlimited growth.

*Depending on the install environment and server's specifications

i-PRO Active Guard

Immediate response to or prevention of incidents

- Detect various events such as intruder, gunshot sound, and watchlist alarm for specific faces, people, vehicle and license plate group.
Rule-based action on VMS enables automation of system behavior when an event occurs.
- A mobile application frees you from work in a monitoring room. Also, by linking the PC software and mobile application, the necessary information can be transmitted from a person

Significant reduction in post investigation time

- Searching by face, license plate, and characteristics of people and vehicles enables fast searching in a matter of seconds, not hours.
- This advantage is maximized by many supported attributes with high precision based on i-PRO deep learning technology and by the high image quality of the i-PRO camera.

Customizable dashboard display for business intelligence

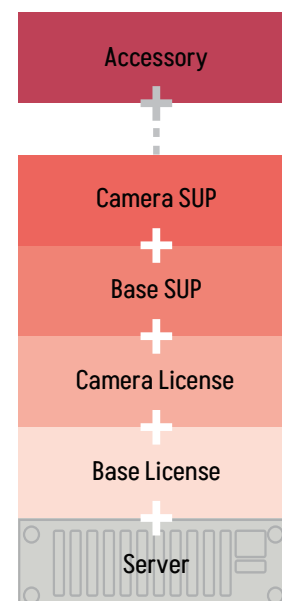
- The dashboard on the web browser shows people counting, license plate counting, face and gender statistics, and people and vehicle attribute statistics.
This can be utilized for business intelligence.
- Users can customize the content, size, location, data display period, etc. shown according to their needs.

Flexible system architecture

- Fully integrated into devices from Video Insight.
- No need for expensive analysis server thanks to edge analytics.
- By installing and using the required Edge AI Applications for each camera, you can use the performance of AI without waste.

OPTIMIZATION & COST EFFICIENCY

Surveillance is not cable TV,
why pay for every channel you watch?



Video Management Software (VMS) Competitor



Lower cost than any other VMS

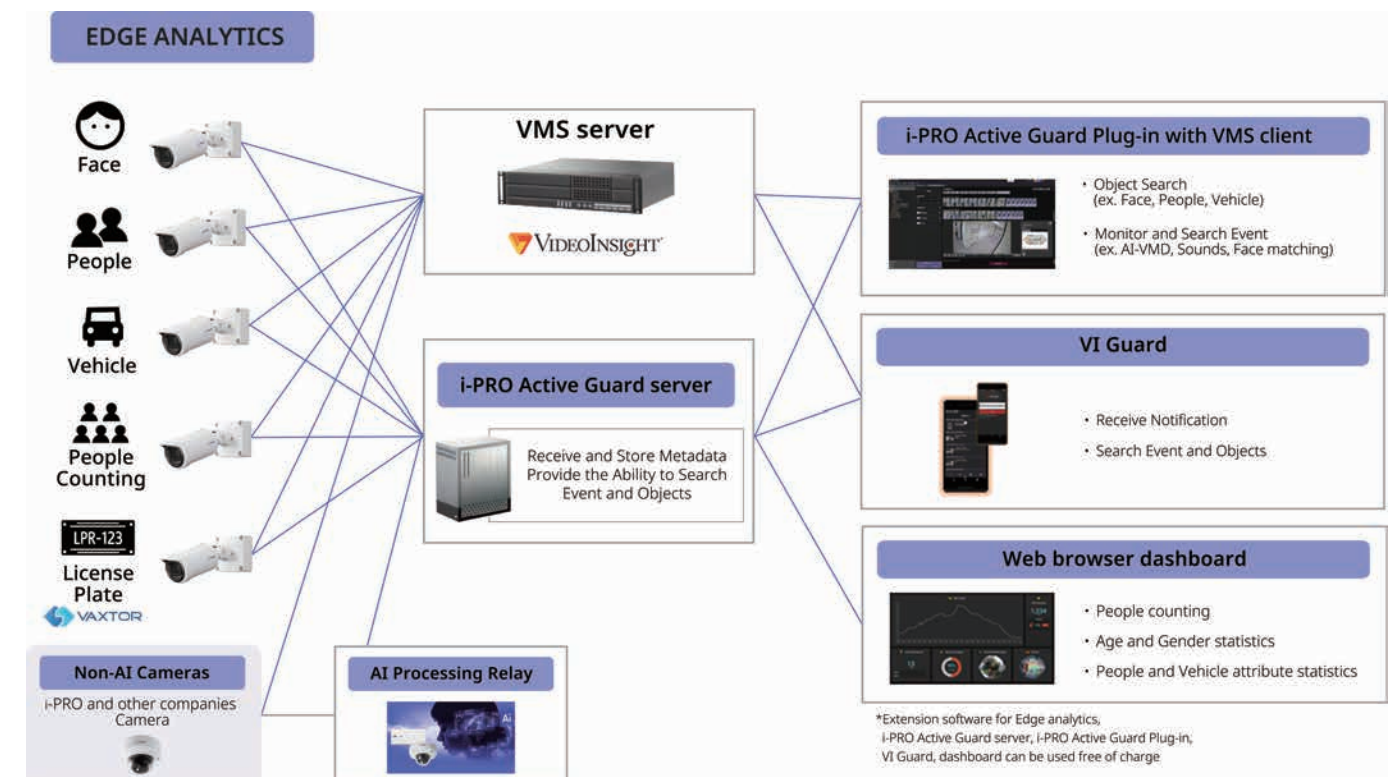
With the high cost commonly associated with VMS systems, Video Insight seeks to eliminate unnecessary costs by introducing bundled VMS features and i-PRO cameras licenses in one complete system.

You can now access a full range of surveillance technology at no hidden costs*.

* Third party accessories such as the License Plate Recognition (LPR) are not included.



Video Insight with i-PRO

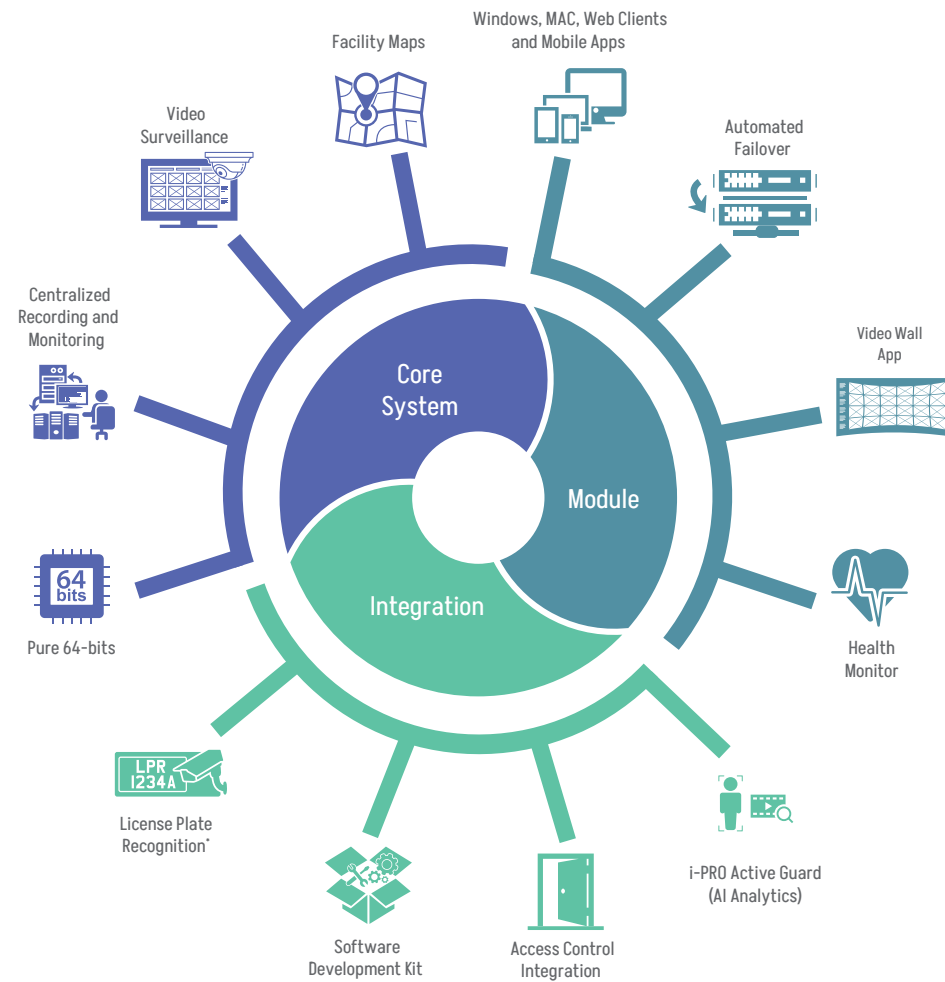


SURVEILLANCE TECHNOLOGY NEVER STOPS ADVANCING

Video Insight is a robust enterprise-class surveillance system built with the principles of efficiency and simplicity of operation in mind.

With a strong commitment to the security industry, Video Insight brings together powerful surveillance technology, advanced features, unmatched flexibility, easy-to-use interface and a low total cost of ownership all in one single bundled system.

Be ready for the future of surveillance.



* Third party accessories such as the License Plate Recognition (LPR) are not included.

IP SERVER

- Efficient 64-bit design supports up to 300 cameras per server (depending on recording conditions)
- Designed for large camera deployments – multi-server, multi-location
- Open platform allows for easy integration
- SQL Server based
- Supports camera- and server-side motion detection
- Automated Failover
- Integrates with Active Directory users and groups
- Support for local, direct attached, SAN / NAS
- i-PRO Active Guard Plug-in



COMPARISON DATA SHEET

Below is a comparison between version 7 Enterprise and Express

Video Insight Version	IPSVSE-UL-PN	IPSVSX-UL-PN
Capabilities of Windows Clients	VIMonitorPlus	VIMonitorPlus
Live Video Monitoring	<input type="radio"/>	<input type="radio"/>
Access to Recorded Videos and clipping	<input type="radio"/>	<input type="radio"/>
Facility Maps with Camera and Door Functionality	<input type="radio"/>	<input type="radio"/>
PTZ Control	<input type="radio"/>	<input type="radio"/>
Access Control Integration	<input type="radio"/>	<input type="radio"/>
Custom View Management	<input type="radio"/>	<input type="radio"/>
Guard Tour & Reporting	<input type="radio"/>	<input type="radio"/>
Media Player with Video Tamper Detection	<input type="radio"/>	<input type="radio"/>
Synchronized Playback for Multi-Camera Viewing	<input type="radio"/>	<input type="radio"/>
Variable bitrates Controls for Optimization of Bandwidth	<input type="radio"/>	<input type="radio"/>
Audio Playback & Recording functionality (For Compatible Cameras)	<input type="radio"/>	<input type="radio"/>
360 Camera De-warping Functionality	<input type="radio"/>	<input type="radio"/>
Rules Manager Functionality	<input type="radio"/>	<input type="radio"/>
User Level Management	<input type="radio"/>	<input type="radio"/>
Storage Management	<input type="radio"/>	<input type="radio"/>
System Log Reports for All Events in VI	<input type="radio"/>	<input type="radio"/>
Logs Exporting in PDF, XPS & txt format	<input type="radio"/>	<input type="radio"/>
Web-Page as Camera View Capability	<input type="radio"/>	<input type="radio"/>
Video Bookmarking Support	<input type="radio"/>	<input type="radio"/>
Workspaces: Multi-tasking tabs	<input type="radio"/>	<input type="radio"/>
i-PRO in-house analytics integration	<input type="radio"/>	<input type="radio"/>
Dynamic Menu bars	<input type="radio"/>	<input type="radio"/>
Hardware Acceleration Support for improved live & recorded video playback via supported GPUs	<input type="radio"/>	<input type="radio"/>
Live Camera View sharing with messaging	<input type="radio"/>	<input type="radio"/>
Improved Ability to share live cameras views & layouts through Video Wall	<input type="radio"/>	<input type="radio"/>
Increased Optimization setting options	<input type="radio"/>	<input type="radio"/>
Smart Search via region of interest	<input type="radio"/>	<input type="radio"/>
Motion Search and Motion logs	<input type="radio"/>	<input type="radio"/>
Workspace home screen with custom quick launch options	<input type="radio"/>	<input type="radio"/>
Enhanced timeline with motion vs fulltime recording indication	<input type="radio"/>	<input type="radio"/>
Event Monitor: For all recorded videos, system logs and alert notifications	<input type="radio"/>	<input type="radio"/>
Streamline UI	<input type="radio"/>	<input type="radio"/>
Enhanced Camera Cycle layout functionality	<input type="radio"/>	<input type="radio"/>
MP4, AVI and exe video file format support	<input type="radio"/>	<input type="radio"/>
Custom application plug-ins: LPR, i-PRO Active Guard and more --	<input type="radio"/>	--
i-PRO NVR Integration: Live & Recorded playback support*	<input type="radio"/>	--

*Please refer to IP Server Administrative Guide

CAPABILITIES OF VIDEO INSIGHT IP-SERVER	IPSVSE-UL-PN	IPSVSX-UL-PN
Cameras Management Support	UNLIMITED CAMERAS	32 CAMERAS MAX
Health Monitor Plus	<input type="radio"/>	<input type="radio"/>
IP Server Forward Compatibility	<input type="radio"/>	<input type="radio"/>
Full H.265 Compression support	<input type="radio"/>	<input type="radio"/>
Requires IP Server License	<input type="radio"/>	<input type="radio"/>

INCLUDED CLIENTS	IPSVSE-UL-PN	IPSVSX-UL-PN
Includes Mobile IOS, Android & Web Viewing Clients	<input type="radio"/>	<input type="radio"/>
Fully Integrated with MonitorCast Access Control	<input type="radio"/>	<input type="radio"/>