

WV-S3512LM

720p On-board Compact Dome Network Camera

iA (intelligent Auto) H.265 Compact Dome Camera

The WV-S3512LM is a compact & simple design multifunction camera that achieves high visibility even under extreme conditions and can be placed in a small space without damaging the landscape.



- HD 720p up to 60fps
- iA (intelligent Auto)
- Extreme Super Dynamic 134dB
- Color night vision (0.0013 to 0.02 lx)
- H.265 Smart Coding
- Built-in IR LED
- Corridor mode (90 degrees or 270 degrees in image rotation)
- i-VMD License Bundled
- NDAA Compliant



SPECIFICATIONS

| Camera | |
|---|---|
| Image Sensor | Approx. 1/3 type CMOS image sensor |
| Minimum Illumination | Color : 0.02 lx, BW : 0.01 lx (F2.3, Maximum shutter : Off (1/30s), AGC : 11) BW : 0 lx (F2.3, Maximum shutter : Off (1/30 s), AGC : 11, when the IR LED is lit) Color : 0.0013 lx, BW : 0.0007 lx (F2.3, Maximum shutter : max. 16/30s, AGC : 11) |
| White Balance | AWC (2,000 ~ 10,000 K), ATW1 (2,700 ~ 6,000 K), ATW2 (2,000 ~ 6,000 K) |
| Maximum shutter | Max. 1/10000 s to Max. 16/30 s |
| Intelligent Auto | On / Off |
| Super Dynamic | On / Off, The level can be set in the range of 0 to 31. |
| Dynamic Range | Max.134 dB typ. (Super Dynamic : On) |
| Adaptive Black Stretch | The level can be set in the range of 0 to 255. |
| Back light compensation / High light compensation | BLC (Back light compensation) / HLC (High light compensation) / Off (only when Super dynamic / Intelligent Auto : Off) |
| Fog Compensation | On / Off (only when Intelligent auto / auto contrast adjust : Off) |
| Maximum gain | The level can be set in the range of 0 to 11. |
| Color/BW (ICR) | Off / On (IR Light Off) / On (IR Light On) / Auto1 (IR Light Off) / Auto2 (IR Light On) / Auto3 (SCC) |
| IR LED Light | High / Middle / Low / Off, Maximum irradiation distance : 15 m {Approx. 49 ft} |
| Digital Noise Reduction | The level can be set in the range of 0 to 255. |
| Video Motion Detection | On / Off, 4 areas available |
| Intelligent VMD (i-VMD) | Type 4 *Bundled License |
| Privacy Zone | On / Off, Up to 8 zones available |
| Image rotation | 0 ° / 90 ° / 180 °(Upside-down) / 270 ° |
| Mirror | On / Off |
| Camera Title (OSD) | Up to 20 characters (alphanumeric characters, marks), On / Off |
| Lens | |
| Zoom ratio | 1 x Optical |
| Digital (electronic) zoom | Choose from 3 levels of x1, x2, x4 |
| Focal Length | 2.8 mm {1/8 inches} |
| Angular Field of View | [16 : 9 mode] Horizontal : 97° Vertical : 54° [4 : 3 mode] Horizontal : 97° Vertical : 72° |

| | |
|------------------------|-----------------------------|
| Maximum Aperture Ratio | 1 : 2.3 |
| Focus range | 0.5 m {19-11/16 inches} – ∞ |

Adjusting Angle

| | |
|-----------------|--|
| Adjusting Angle | Horizontal (PAN) angle : ±45°, Vertical (TILT) angle : 0 to +90°, Azimuth (YAW) angle : ±90° |
|-----------------|--|

Browser GUI

| | |
|-------------------------|--|
| Camera Control | Brightness |
| GUI/Setup Menu Language | English, Italian, French, German, Spanish, Portuguese, Russian, Chinese, Japanese |

Network

| | |
|--|---|
| Network IF | 10Base-T / 100Base-TX, M12 connector |
| Resolution H.265/ H.264 JPEG (MJPEG) | •1.3 mega pixel [16 : 9] (30/60 fps) 1,280 x 720 / 640 x 360 / 320 x 180 •1.3 mega pixel [4 : 3] (30 fps) 1,280 x 960 / 800 x 600 / 640 x 480 / 400 x 300 / 320 x 240 |
| H.265/ H.264 | [Transmission Mode] Constant bit rate / VBR / Frame rate / Best effort [Transmission Type] Unicast / Multicast |
| JPEG | [Image Quality] 10 steps |
| Smart Coding | GOP(Group of pictures) control [When H.264 is selected] On(Mid) / On(Low) / Off [When H.265 is selected] On(Frame rate control) / On(Advanced) / On(Mid) / On(Low) / Off Smart Facial Coding* Off / On(AUTO VIQS) / On(Smart Facial Coding) *Smart Facial Coding is only available with Stream(1). |
| Audio Compression | G.726 (ADPCM) : 16 kbps / 32 kbps G.711 : 64 kbps AAC-LC : 64 kbps / 96 kbps / 128 kbps |
| Supported Protocol | IPv6 : TCP/IP, UDP/IP, HTTP, HTTPS, RTP, FTP, SMTP, DNS, NTP, SNMP, DHCPv6, MLD, ICMP, ARP, IEEE 802.1X, DiffServ, SSL/TLS, SRTP, SFTP, MQTT, LLDP IPv4 : TCP/IP, UDP/IP, HTTP, HTTPS, RTSP, RTP, RTP/RTCP, FTP, SMTP, DHCP, DNS, DDNS, NTP, SNMP, UPnP, IGMP, ICMP, ARP, IEEE 802.1X, DiffServ, SSL/TLS, SRTP, SFTP, MQTT, LLDP |
| No. of Simultaneous Users | Up to 14 users (Depends on network conditions) |
| microSDXC/microSDHC/ microSD Memory Card | H.265 / H.264 recording : Manual REC / Alarm REC (Pre/Post) / Schedule REC / Backup upon network failure JPEG recording : Manual REC / Alarm REC (Pre/Post) / Backup upon network failure Compatible microSDXC/microSDHC/microSD Memory Card : Panasonic 2 GB, 4 GB*, 8 GB*, 32 GB*, 64 GB**model *microSDHC card, **microSDXC card |
| Mobile Terminal Compatibility | iPad, iPhone, Android™ terminals |
| ONVIF® Profile | G / S / T |

Alarm

| | |
|---------------|---|
| Alarm Source | VMD alarm, Command alarm, Audio detection alarm |
| Alarm Actions | microSDXC/microSDHC/microSD memory recording, E-mail notification, HTTP alarm notification Indication on browser, FTP image transfer, TCP alarm notification output |

| Input/Output | |
|------------------------------------|---|
| Built-in microphone | Nondirectional electret condenser microphone |
| General | |
| Safety | UL (UL60950-1 2Ed), c-UL (CAN/CSA C22. NO.60950-1-07), CE, IEC60950-1 EN45545 compliant, NFPA130 |
| EMC | FCC (Part15 Subpart B, ClassA, SDoC), ICES-003 ClassA, EN55032 ClassB, EN55035, ECE-R10, EN50498, EN50121 |
| Power Source and Power Consumption | PoE (IEEE802.3af compliant, alternative A) Device : DC48 V 80 mA, Approx. 3.8 W (Class 2 device) |
| Ambient Operating Temperature | -40 °C to +60 °C (-40 °F to 140 °F)*12 {Power On range : -20 °C to +60 °C (-4 °F to +140 °F)} |
| Ambient Operating Humidity | 10 to 100 % (no condensation) |
| Water and Dust Resistance | IP66 (IEC60529), Type 4X(UL50), NEMA 4X compliant |
| Shock Resistance | IK10 (IEC 62262) |
| Railway Application | EN50155 : 2017 Class OT2/ST2 (EN 50155 : 2007 Class TX), IEC62236-3-2 |
| Dimensions | ø109 mm x 53 mm (H) {ø4-9/32 inches x 2-3/32 inches (H)} Dome radius 27 mm {1-1/16 inches} |
| Mass (Approx.) | Approx. 410 g {0.91 lbs} |
| Finish | Main body : Aluminum die cast, Light gray Dome section : Polycarbonate resin, Clear |

NOTES

Important

- Safety Precautions : Carefully read the Basic Information, Installation Guide and Operating Instructions before using this product.
- i-PRO Co., Ltd. cannot be held responsible for the performance of the network and/or other manufacturers' products used on the network.
- Masses and dimensions are approximate. Specifications are subject to change without notice.

Trademarks and registered trademarks

- iPad and iPhone are trademarks of Apple Inc., registered in the U.S. and other countries. - Android is a trademark of Google LLC.
- ONVIF is a trademark of ONVIF, Inc.
- All other trademarks identified herein are the property of their respective owners

©i-PRO Co., Ltd All rights reserved / November 2022

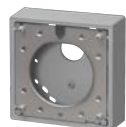
OPTIONAL ACCESSORIES

Select a compatible accessory

[Accessory Selector \(i-pro.com\)](http://i-pro.com).



WV-QWL500-G
Mount Bracket



WV-QJB500-G
Mount Bracket



WV-QCL100-W
Mount Bracket



WV-Q183
Mount Bracket



WV-Q182
Mount Bracket



WV-CW6SA
Dome Cover

APPEARANCE

| No. | Part Name | Material | Process/Remark |
|-----|----------------------------|--------------------|------------------------------------|
| 1 | Upper cover | Aluminium die cast | Coating (Light Gray) + Printing |
| 2 | Camera unit | | |
| 3 | Lens | | |
| 4 | Enclosure fixing screw | Stainless Steel | L=15mm |
| 5 | Enclosure fixing screw | Stainless Steel | L=25.5mm |
| 6 | Base cover | PC | Clear |
| 7 | Lower cover | Aluminium die cast | Coating (Light Gray) |
| 8 | Lens cover | PC/PS/ABS | Black |
| 9 | Lens unit | | |
| 10 | Microphone sponge | PORON | |
| 11 | IR LED cover | PC+ABS | Black |
| 12 | Light-blocking rubber ring | Silicone rubber | Black |
| 13 | IR LED | | |
| 14 | TILT/YAW fixing screw | Steel | |
| 15 | Inner cover | ABS | Black |
| 16 | Built-in microphone | | |
| 17 | Waterproof rubber | Silicone rubber | Black |
| 18 | Waterproof rubber | Silicone rubber | Light Gray |
| 19 | MicroSD slot | | |
| 20 | INITIAL SET button | | |
| 21 | LINK indicator | | |
| 22 | ACT indicator | | |
| 23 | SD CARD indicator | | |
| 24 | Data Matrix label | Polyester Film | Printing |
| 25 | M2 (Lens) Network cable | | |
| 26 | Home plate | Polyester Film | Printing |
| 27 | Serial number label | Polyester Film | Printing |
| 28 | Code label | Polyester Film | Printing |
| 29 | Template | | |
| 30 | Light-blocking sheet | PC sheet | Black |
| 31 | Caution label | Polyester Film | Printing |
| 32 | Caution label | Polyester Film | Printing |

| | |
|-----|----------------|
| PRO | Projected area |
| PRO | 0.005mm |
| PRO | 0.004mm |

WV-S3512LM