



HDD Compatibility Chart

Version : 20th October 2023

- 1. For WJ-NX510,410,310 series 2
- 2. For WJ-NU series 8
- 3. For WJ-NX400,300,200 series and others 13
- 4. Common information 33

CONTENTS

1. For WJ-NX510,410,310 series

1-1 Important Notes 3

The preparations to use Seagate HDD 4

1-2 HDD Compatibility Chart 6

2. For WJ-NU series

2-1 Important Notes 8

2-2 HDD Compatibility Chart 11

Notes

When using the recommended Seagate or Western Digital HDDs and the Canister.
(for WJ-NX510K/WJ-NX410K/WJ-HXE410)

Please **DO NOT** fix the HDD (the Canister) with two screws on the bottom. (⇒ marks below)
The length of the screw may be longer than the depth of the tapped hole.



Important information : The preparations to use Seagate HDD

To use Seagate HDD, the following 2 items **must** be performed before the installation of HDDs.

1. Turn off SSC (SSC : Spread Spectrum Clocking, default setting : "ON")

Caution : If SSC is NOT turned off, the HDD will **never be recognized by NVR.**

>> [See Next Page](#)

Caution :

We will not take responsibility for any failure that occurs by performing an operation different from the detailed procedure from the next pages.

The preparations to use Seagate HDD

1) The items and procedure to turn off SSC

◆ The required items

- Windows PC with “SeaChest utilities” *1
- USB to SATA conversion adapter for **3.5 inch HDD** with AC power input

Note : Adapter with **special functions** such as clone function **cannot be used**.

- HDDs to be changed

*1: the download site of "SeaChest Utilities"

<https://www.seagate.com/support/software/seachest/>

◆ Procedure to turn off SSC setting

Described on page 34 to 38

>> [See Page 34](#)

1-2 HDD Compatibility Chart

WJ-NX310



20th October 2023

Latest Firmware Version : V1.00

Current HDDs

| Capacity | Vendor | Model | Height | Note |
|------------------|-----------------|-------------------|-------------|------|
| 18TB | Western Digital | WD181PURP-74B6HY0 | Normal | *1 |
| | | WD181PURP-85B6HY0 | | |
| 8TB | Seagate | ST8000VX010 | Normal | *2 |
| | Western Digital | WD84PURZ-74B2YY0 | Normal | *1 |
| WD84PURZ-85B2YY0 | | | | |
| 6TB | Seagate | ST6000VX009 | Normal | *2 |
| | Western Digital | WD64PURZ-74BWUY0 | Normal | *1 |
| WD64PURZ-85BWUY0 | | | | |
| 4TB | Seagate | ST4000VX016 | Low profile | *2 |
| | Western Digital | WD43PURZ-74BWPY0 | Normal | *1 |
| WD43PURZ-85BWPY0 | | | | |
| 3TB | Seagate | ST3000VX015 | Low profile | *2 |
| | Western Digital | WD33PURZ-74BWPY0 | Normal | *1 |
| WD33PURZ-85BWPY0 | | | | |
| 2TB | Seagate | ST2000VX017 | Low profile | *2 |
| 1TB | Seagate | ST1000VX013 | Low profile | *2 |

*1 The difference between "-74" and "-85" depends on the WD sales route.

*2 To use Seagate SkyHawk series, it is necessary to set the HDD SSC setting to "OFF" in advance. And need to choose the screws to install the HDDs. Please refer to page 4 for instructions.

1-2 HDD Compatibility Chart

WJ-NX510K/NX410K
WJ-HXE410



20th October 2023

Latest Firmware Version : V1.00

Current HDDs

| Capacity | Vendor | Model | Height | Note |
|----------|-----------------|--|-------------|-------|
| 18TB | Western Digital | WD181PURP-74B6HY0 WD181PURP-85B6HY0 | Normal | *1 |
| 8TB | Seagate | ST8000VX010 | Normal | *2,*3 |
| | Western Digital | WD84PURZ-74B2YY0 WD84PURZ-85B2YY0 | Normal | *1 |
| 6TB | Seagate | ST6000VX009 | Normal | *2,*3 |
| | Western Digital | WD64PURZ-74BWUY0 WD64PURZ-85BWUY0 | Normal | *1 |
| 4TB | Seagate | ST4000VX016 | Low profile | *2,*3 |
| | Western Digital | WD43PURZ-74BWPY0 WD43PURZ-85BWPY0 | Normal | *1 |
| 3TB | Seagate | ST3000VX015 | Low profile | *2,*3 |
| | Western Digital | WD33PURZ-74BWPY0 WD33PURZ-85BWPY0 | Normal | *1 |
| 2TB | Seagate | ST2000VX017 | Low profile | *2,*3 |
| 1TB | Seagate | ST1000VX013 | Low profile | *2,*3 |

*1 The difference between "-74" and "-85" depends on the WD sales route.

*2 Please refer to page 2, not to fix two screws into bottom side of HDD.

*3 To use Seagate SkyHawk series, it is necessary to set the HDD SSC setting to "OFF" in advance. And need to choose the screws to install the HDDs. Please refer to page 4 for instructions.

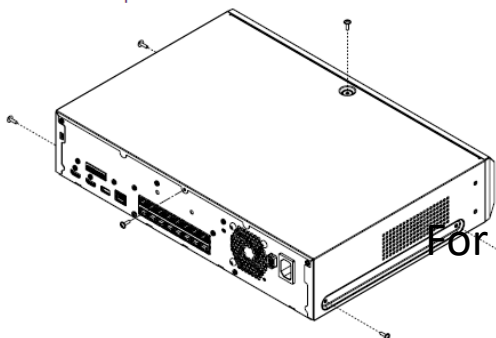
Installation of the HDD(s) for WJ-NU301 (from Installation Guide)

Step 1

Unplug the Power cord from the recorder's Power cord inlet.

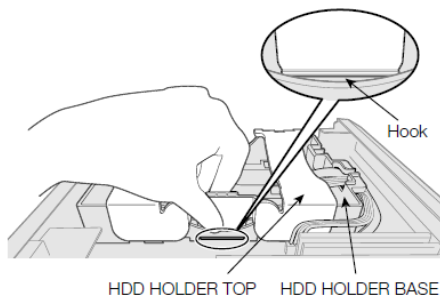
Step 2

Remove the 4 screws on the left and right sides of this product, remove the 1 screw on the top cover, remove the 1 screw on the middle upper part of the back, and then remove the top cover.



Step 3

Clip the top of the hook on the HDD HOLDER TOP with your finger and thumb. Push inward with your thumb to release the hook, and open the HDD HOLDER TOP.

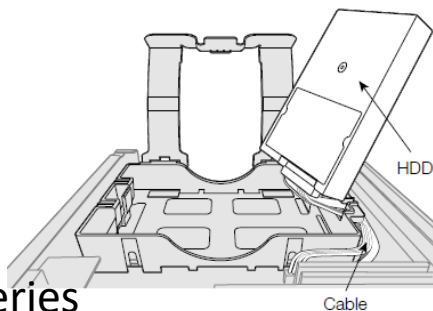


Step 4

Remove the AIR CAP that protects the cable connector.

Step 5

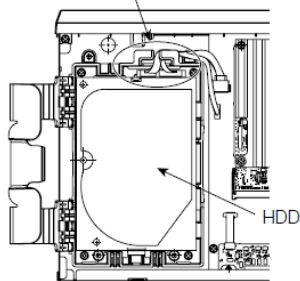
Tilt the HDD at an angle and insert the cable connected to the board into the HDD.



Step 6

Make sure that the cable passes through the HDD HOLDER BASE slot so that they do not come apart, and place the HDD with the cable plugged in on the HDD HOLDER BASE. If the cable is not threaded through the slot, pass it through before placing the HDD.

Pass the cable through the HDD HOLDER BASE slot.

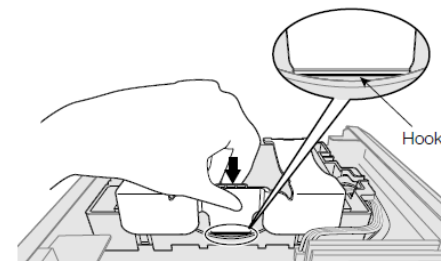


Note:

For WJ-NU301, the position of the cable connector on the board side is different.

Step 7

Pass the hook of the HDD HOLDER TOP through the inside of the HDD HOLDER BASE. Push in the arrow on the HDD HOLDER TOP, close the HDD HOLDER TOP, and then fix the HDD.



Step 8

Perform Step 3 to Step 7 for another HDD, and install the HDD.

Step 9

Reinstall the top cover, and fix it by tightening the 4 screws on the left and right sides of this product, 1 screw on the top cover, and 1 screw on the middle upper part of the back.

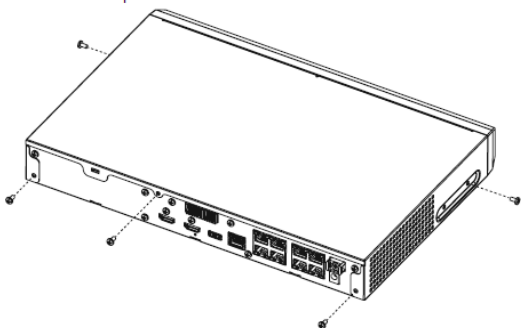
Installation of the HDD for WJ-NU300/NU201/NU101 (from Installation Guide)

Step 1

Unplug the DC plug of the AC power adapter from the DC jack of the recorder.

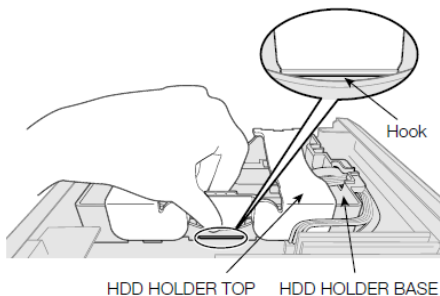
Step 2

Remove the two screws on the left and right sides of the main unit, remove the three screws on the back, and then remove the top cover.



Step 3

Clip the top of the hook on the HDD HOLDER TOP with your finger and thumb. Push inward with your thumb to release the hook, and open the HDD HOLDER TOP.

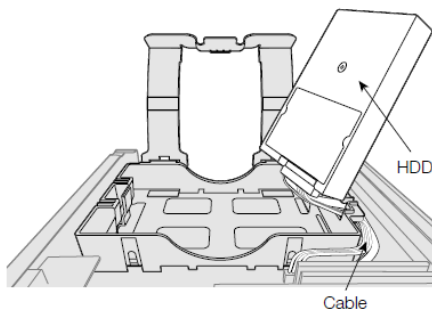


Step 4

Remove the AIR CAP that protects the cable connector.

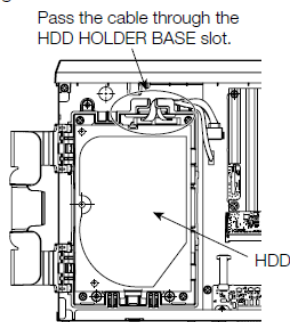
Step 5

Tilt the HDD at an angle and insert the cable connected to the board into the HDD.



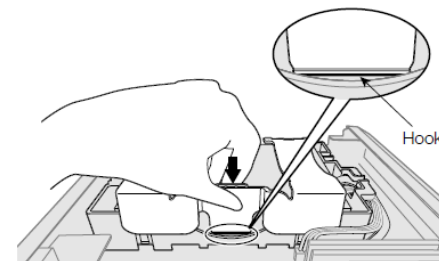
Step 6

Make sure that the cable passes through the HDD HOLDER BASE slot so that they do not come apart, and place the HDD with the cable plugged in on the HDD HOLDER BASE. If the cable is not threaded through the slot, pass it through before placing the HDD.



Step 7

Pass the hook of the HDD HOLDER TOP through the inside of the HDD HOLDER BASE. Push in the arrow on the HDD HOLDER TOP, close the HDD HOLDER TOP, and then fix HDD.



Step 8

Install the top cover as before, and tighten the two screws on the left and right sides of the main unit, and the three screws on the back to secure it.










2-1 Important Notes

There are two height types of HDD,
 one is normal height (26.1mm / 1.028"),
 the other is low profile (20.2mm / 0.795").

If you will change HDD from normal height to low profile, you shall also change top cover of HDD holder.

No need to change top cover of HDD holder,
 if you will change from low profile HDD to normal height one,
 or HDD height is the same before and after.

We recommend you changing HDD as the same height one before.

| before | | after | | |
|---|--|--|---|--|
| Normal height HDD  | | Low profile HDD  |  | Need Service part # PGUX2500ZA/C1 (ask i-PRO service section) |
| Low profile  | Normal height  | (No need for another part) | | |
| Normal height  | Normal height  | (No need for another part) | | |
| Low profile  | Low profile  | (No need for another part) | | |

2-2 HDD Compatibility Chart

WJ-NU301



20th October 2023

Latest Firmware Version : V1.20

Current HDDs

| Capacity | Vendor | Model | Height | Note |
|----------|-----------------|--------------------------------------|-------------|------|
| 20TB | Seagate | ST20000VE002 | Normal | *2 |
| 18TB | Western Digital | WD181PURP-74B6HY0 | Normal | *1 |
| | | WD181PURP-85B6HY0 | | |
| 8TB | Seagate | ST8000VX010 | Normal | |
| | Western Digital | WD84PURZ-74B2YY0 WD84PURZ-85B2YY0 | Normal | *1 |
| 6TB | Seagate | ST6000VX009 | Normal | |
| | Western Digital | WD64PURZ-74BWUY0 WD64PURZ-85BWUY0 | Normal | *1 |
| 4TB | Seagate | ST4000VX016 | Low profile | |
| | Western Digital | WD43PURZ-74BWPY0 WD43PURZ-85BWPY0 | Normal | *1 |
| 3TB | Seagate | ST3000VX015 | Low profile | |
| | Western Digital | WD30PURZ-74AKKY0 WD30PURZ-85AKKY0 | Normal | *1 |
| 2TB | Seagate | ST2000VX017 | Low profile | |
| 1TB | Seagate | ST1000VX013 | Low profile | |

Discontinued HDDs

| Capacity | Vendor | Model | Height | Note |
|----------|-----------------|------------------|--------|------------------------|
| 6TB | Western Digital | WD63PURZ-74B4VY0 | Normal | *1 |
| | | WD63PURZ-85B4VY0 | | Discontinued in CY23Q1 |
| 4TB | Western Digital | WD42PURZ-74B4YY0 | Normal | *1 |
| | | WD42PURZ-85B4YY0 | | Discontinued in CY23Q1 |
| 2TB | Western Digital | WD22PURZ-74B4ZY0 | Normal | *1 |
| | | WD22PURZ-85B4ZY0 | | Discontinued in CY23Q3 |

*1 The difference between "-74" and "-85" depends on the WD sales route.

*2 NU301 s should be operated more than 5°C (41F) with this drive.

2-2 HDD Compatibility Chart

WJ-NU300/NU201/NU101



20th October 2023

Latest Firmware Version : V1.20

Current HDDs

| Capacity | Vendor | Model | Height | Note |
|----------|-----------------|--------------------------------------|-------------|------|
| 20TB | Seagate | ST20000VE002 | Normal | *2 |
| 18TB | Western Digital | WD181PURP-74B6HY0 | Normal | *1 |
| | | WD181PURP-85B6HY0 | | |
| 8TB | Seagate | ST8000VX010 | Normal | |
| | Western Digital | WD84PURZ-74B2YY0 WD84PURZ-85B2YY0 | Normal | *1 |
| 6TB | Seagate | ST6000VX009 | Normal | |
| | Western Digital | WD64PURZ-74BWUY0 WD64PURZ-85BWUY0 | Normal | *1 |
| 4TB | Seagate | ST4000VX016 | Low profile | |
| | Western Digital | WD43PURZ-74BWPY0 WD43PURZ-85BWPY0 | Normal | *1 |
| 3TB | Seagate | ST3000VX015 | Low profile | |
| | Western Digital | WD30PURZ-74AKKY0 WD30PURZ-85AKKY0 | Normal | *1 |
| 2TB | Seagate | ST2000VX017 | Low profile | |
| 1TB | Seagate | ST1000VX013 | Low profile | |

Discontinued HDDs

| Capacity | Vendor | Model | Height | Note |
|----------|-----------------|------------------|--------|------------------------|
| 6TB | Western Digital | WD63PURZ-74B4VY0 | Normal | *1 |
| | | WD63PURZ-85B4VY0 | | Discontinued in CY23Q1 |
| 4TB | Western Digital | WD42PURZ-74B4YY0 | Normal | *1 |
| | | WD42PURZ-85B4YY0 | | Discontinued in CY23Q1 |
| 2TB | Western Digital | WD22PURZ-74B4ZY0 | Normal | *1 |
| | | WD22PURZ-85B4ZY0 | | Discontinued in CY23Q3 |

*1 The difference between "-74" and "-85" depends on the WD sales route.
*2 NU101/201/300 s should be operated more than 5°C (41°F) with this drive.

3. For WJ-NX400,300,200 series and others

3-1 Important Notes 14

To use Seagate, WD (5TB, 6TB, 8TB) HDD with HDD canister 14

The preparations to use Seagate HDD 15

3-2 HDD Compatibility Chart (*) 24

(*) For models that have been discontinued for more than 7 years, the compatibility chart will be deleted.

1-1 Important Notes

For WJ-NX400,300,200 series and others

Notes

When using the recommended Seagate or Western Digital (5TB, 6TB,8TB) HDDs and the Canister.
(for WJ-NX400K/WJ-HXE400/WJ-ND400K/WJ-HDE400/WJ-HD716K/WJ-HD616K)

Please **DO NOT** fix the HDD (the Canister) with two screws on the bottom. (⇒ marks below)
The length of the screw may be longer than the depth of the tapped hole.



Important information : The preparations to use Seagate HDD

(For WJ-NX400K/WJ-HXE400/WJ-NX300K/WJ-NX200K/WJ-ND400K/WJ-HDE400/WJ-HD716K/WJ-HD616K)

To use Seagate HDD, the following 2 items **must** be performed before the installation of HDDs.

1. Turn off SSC (SSC : Spread Spectrum Clocking, default setting : "ON")

Caution : If SSC is NOT turned off, the HDD will **never be recognized by NVR**.

>> [See Next Page](#)

2. Choose the screw to use

Caution : If do not install the correct screws, the HDD will not be properly secured to the case, and may experience HDD errors or malfunction.

The screws to install the HDD depend on the serial number of the NVR.

>> [See Page 17](#)

Caution :

We will not take responsibility for any failure that occurs by performing an operation different from the detailed procedure from the next pages.

The preparations to use Seagate HDD

1) The items and procedure to turn off SSC

◆ The required items

- Windows PC with “SeaChest utilities” *1
- USB to SATA conversion adapter for **3.5 inch HDD** with AC power input

Note : Adapter with **special functions** such as clone function **cannot be used**.

- HDDs to be changed

*1: the download site of "SeaChest Utilities"

<https://www.seagate.com/support/software/seachest/>

◆ Procedure to turn off SSC setting

Described on page 34 to 38

>> [See Page 34](#)

The preparations to use Seagate HDD

2) Choose the screws

◆ The screws to install the HDD differ depending on the serial No. of the NVR.

Ex.) Serial No. : TLV00001

(1st character =year(T:2020), 2nd character =month(L:Dec)

| | | Serial No(example) | | | | | | | | | | | |
|---------------|-------|--------------------|------|------|------|------|------|------|------|------|------|------|------|
| 1st character | year | R | S | T | U | V | W | X | Y | A | B | C | D |
| | | 2018 | 2019 | 2020 | 2021 | 2022 | 2023 | 2024 | 2025 | 2026 | 2027 | 2028 | 2029 |
| 2nd character | month | A | B | C | D | E | F | G | H | I | J | K | L |
| | | Jan | Feb | Mar | Apr | May | Jun | Jul | Aug | Sep | Oct | Nov | Dec |

【 Case 1 】 : Serial No. is TLxxxxxx or later
(1st character T=2020, 2nd character L =Dec)

>> See page 18 to 20

【 Case 2 】 : Serial No. is TKxxxxxx or earlier
(1st character T=2020, 2nd character K =Nov)

>> See page 21 to 23

3-1 Important Notes

For WJ-NX400,300,200 series and others

The preparations to use Seagate HDD / Choose the screws 【 Case 1 】

Screw/Washer List 【 Case 1 : TL*xxxxx or later 】

| Screw No | Screw or washer | type | color | quantity | | | Standard Accessories | |
|----------|-----------------|----------------------|--------|------------------------|-----------------|-----------------|----------------------|--|
| | | | | WJ-NX400K WJ-HXE400 | WJ-NX300K | WJ-NX200K | | |
| ① | Screw | #6-32UNC L=5.3 mm | Silver | 6pcs x 9HDDs *1 | 4pcs x 4HDDs | 4pcs x 2HDDs | YES | <p>Provided with NVR</p> <p>*1 Use 36 (4pcs X 9HDDs) screws to install Seagate HDDs and WD 5TB/6TB HDDs.</p> <p>Use 54 (6pcs X 9HDDs) screws to install other WD HDDs except for 5TB/6TB.</p> |



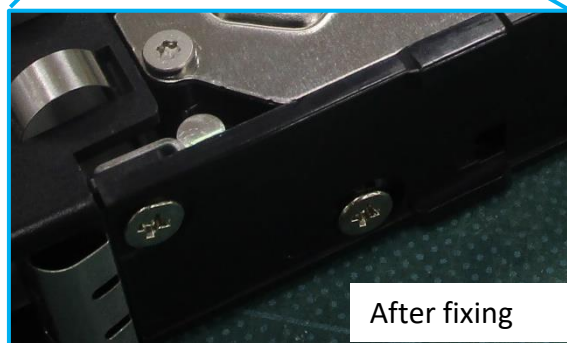
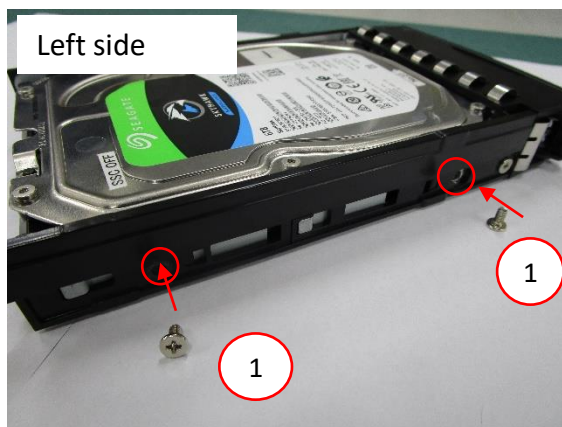
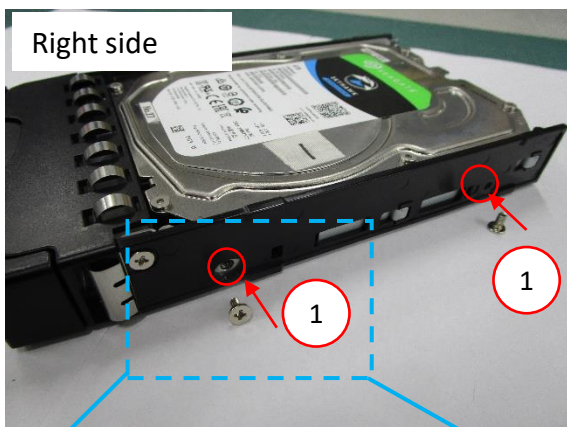
3-1 Important Notes

For WJ-NX400,300,200 series and others

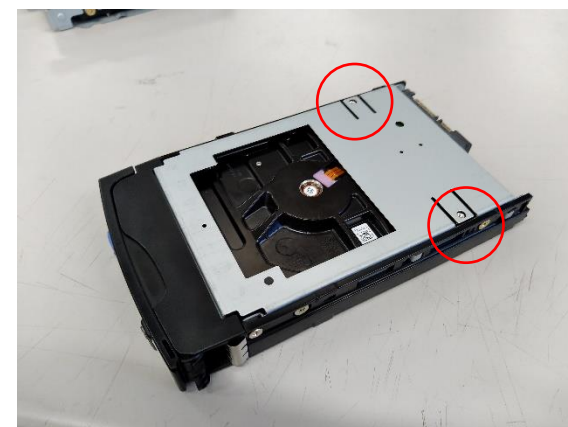
The preparations to use Seagate HDD / Choose the screws < Case 1 >

Installation of the HDD for [WJ-NX400K/WJ-HXE400](#) < Case 1 : TL*xxxxx or later >

Install the HDD into the HDD Unit using 4 fixing screws (Screw No.①)



Do not fix the two places on bottom with screws



3-1 Important Notes

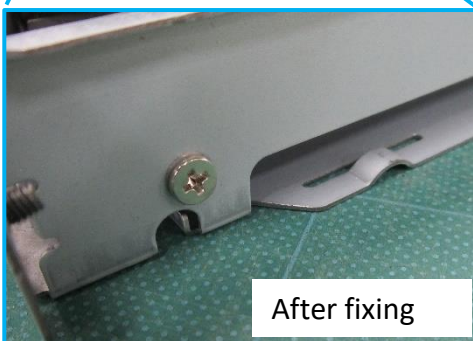
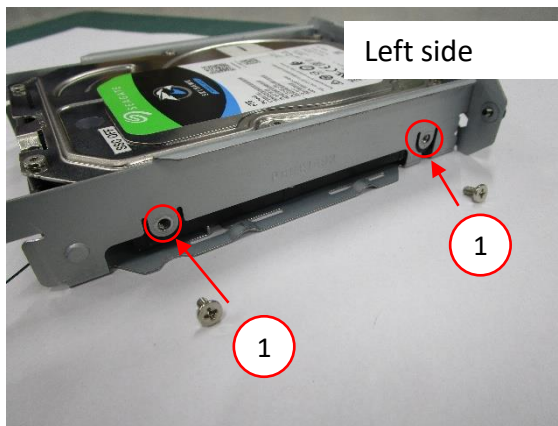
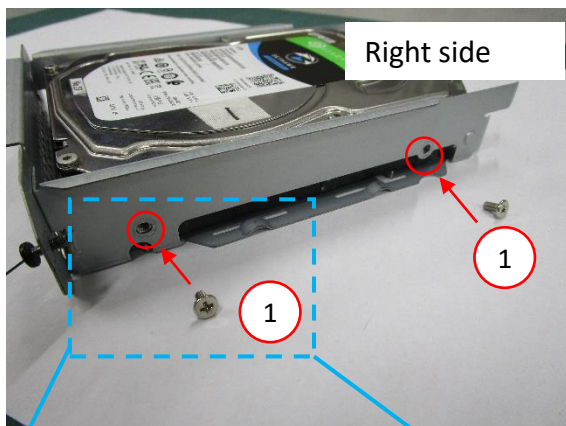
For WJ-NX400,300,200 series and others

The preparations to use Seagate HDD / Choose the screws < Case 1 >

Installation of the HDD for [WJ-NX300K/WJ-NX200](#) < Case 1 : TL*xxxxx or later >

Install the HDD into the bracket using 4 fixing screws (Screw No.①)

WJ-NX200's bracket and WJ-NX300's bracket are partly different, but the assembly work is the same .



3-1 Important Notes

For WJ-NX400,300,200 series and others

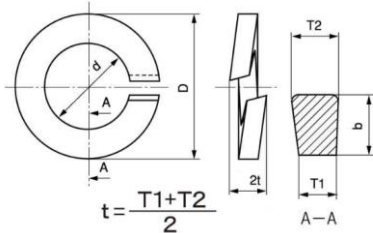
The preparations to use Seagate HDD / Choose the screws < Case 2 >

Screw/Washer List < Case 2 : TK*xxxxx or earlier >

| Screw No | Screw or washer | type | color | quantity | | | | Standard Accessories | |
|----------|-----------------|--------------------|-------|--|-----------------|-----------------|---------------------------------------|----------------------|---|
| | | | | WJ-NX400K WJ-HXE400 WJ-ND400K WJ-HDE400 | WJ-NX300K | WJ-NX200K | WJ-HD716K WJ-HD616K (WJ-HDU40K) | | |
| ② | Screw | #6-32UNC L=6 mm | Gold | 6pcs x 9HDDs <i>*1</i> | 4pcs x 4HDDs | 4pcs x 2HDDs | 6pcs x 4HDDs <i>*2</i> | YES | <p>Provided with NVR</p> <p><i>*1</i> Use 36 (4pcs X 9HDDs) screws to install Seagate HDDs and WD 5TB/6TB HDDs. Use 54 (6pcs X 9HDDs) screws to install other WD HDDs except for 5TB/6TB.</p> <p><i>*2</i> Use 16 (4pcs X 4HDDs) screws to install Seagate HDDs and WD 5TB/6TB HDDs. Use 24 (6pcs X 4HDDs) screws to install other WD HDDs except for 5TB/6TB.</p> |
| ③ | washer | M4 spring washer | - | 2pcs x 9HDDs | 4pcs x 4HDDs | 4pcs x 2HDDs | 2pcs x 4HDDs | NO | Locally procured |

Screw No.③ (spring washer) spec

| Spring Washer | d(mm) | | b(mm) | t(mm) | D(mm) | Material |
|-------------------|-------|-----|-------|-------|-------|----------|
| | max | min | min | min | Max | |
| 4 (For M4) | 4.5 | 4.1 | 1.4 | 1 | 7.6 | SUS |



3-1 Important Notes

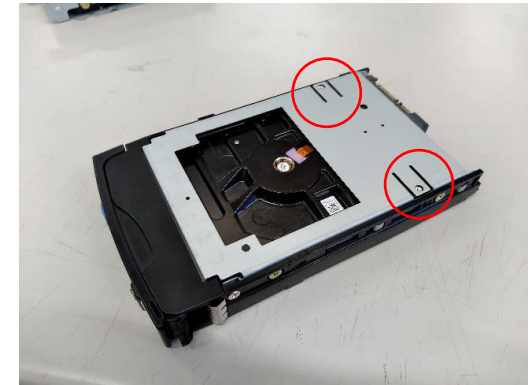
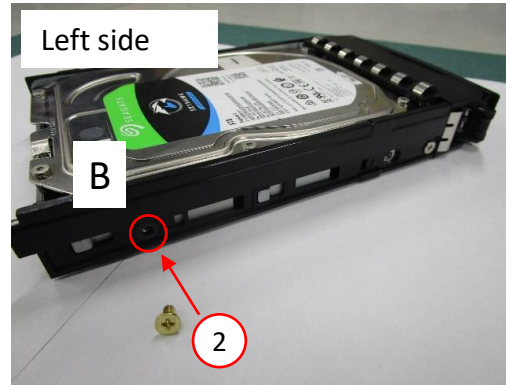
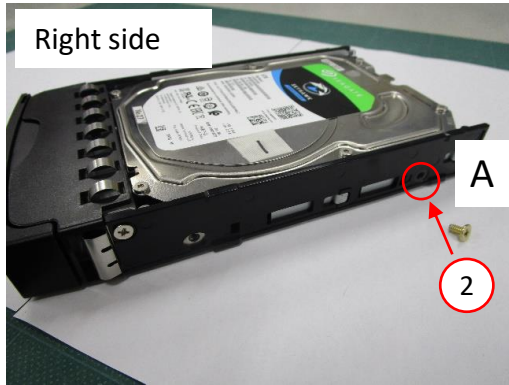
For WJ-NX400,300,200 series and others

The preparations to use Seagate HDD / Choose the screws < Case 2 >

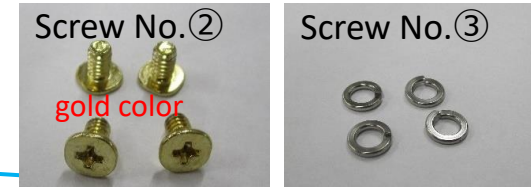
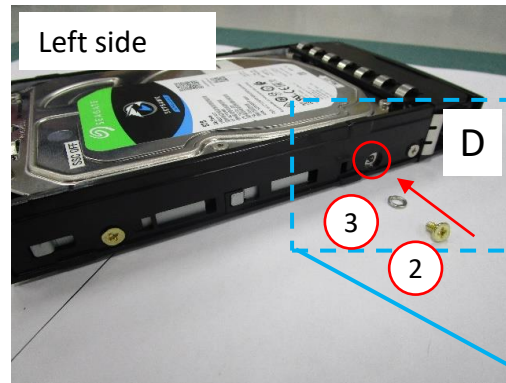
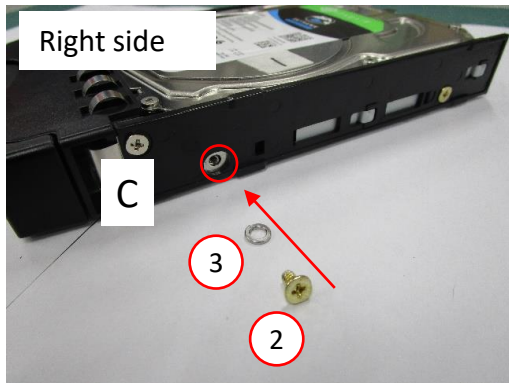
Installation of the HDD for [WJ-NX400K/WJ-HXE400/WJ-ND400K/WJ-HDE400/](#)
[WJ-HD716/WJ-HD616](#) < Case 2 : TK*xxxxx or earlier >

Install the HDD into the HDD Unit
using 2 fixing screws (②), A and B places

Do not fix the two places
on bottom with screws



C and D places, fix with 2 washers (③) and 2 screws (②)



3-1 Important Notes

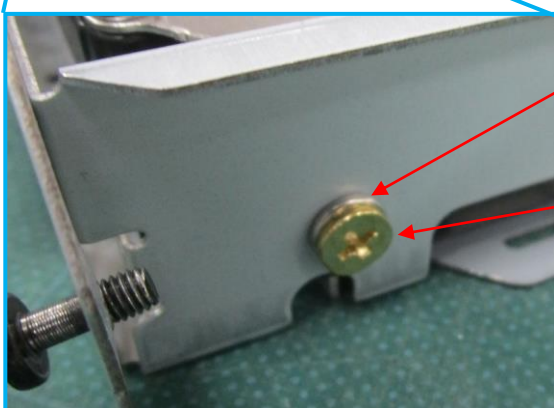
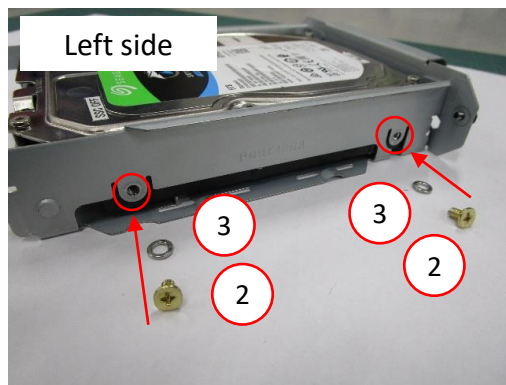
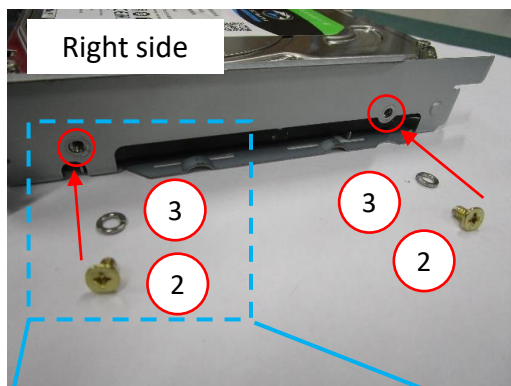
For WJ-NX400,300,200 series and others

The preparations to use Seagate HDD / Choose the screws < Case 2 >

Installation of the HDD for [WJ-NX300K/WJ-NX200](#) < Case 2 : TK*xxxxx or earlier >

WJ-NX200's bracket and WJ-NX300's bracket are partly different, but the assembly work is the same .

Install the HDD into the bracket using 4 washers (③) and 4 fixing screws (②)



Washer③

Screw②

3-2 HDD Compatibility Chart

WJ-NX400K
WJ-HXE400



20th October 2023

3.5" SATA – Advanced Format

Latest Firmware Version : V5.30 (NX400)
V1.11 (HXE400)

Current HDDs

| Capacity | Vendor | Model | Note |
|----------|-----------------|------------------|--------|
| 8TB | Western Digital | WD84PURZ-74B2YY0 | *1, *2 |
| | | WD84PURZ-85B2YY0 | |
| 6TB | Western Digital | WD64PURZ-74BWUY0 | *1, *2 |
| | | WD64PURZ-85BWUY0 | |
| 4TB | Western Digital | WD43PURZ-74BWPY0 | *1 |
| | | WD43PURZ-85BWPY0 | |
| | Seagate | ST4000VX016 | *3 |
| 3TB | Western Digital | WD33PURZ-74BWPY0 | *1 |
| | | WD33PURZ-85BWPY0 | |
| 2TB | Western Digital | WD23PURZ-74C5HY0 | *1 |
| | | WD23PURZ-85C5HY0 | |
| 1TB | Western Digital | WD11PURZ-74C5HY0 | *1 |
| | | WD11PURZ-85C5HY0 | |

Discontinued HDDs

| Capacity | Vendor | Model | Note |
|----------|------------------|------------------|----------------------------------|
| 6TB | Western Digital | WD63PURZ-74B4VY0 | *1 |
| | | WD63PURZ-85B4VY0 | Discontinued in CQ1'23 |
| | | WD60EFRX-68MYMN1 | *2 |
| | | WD60EFRX-68L0BN1 | *2 |
| | | WD60PURX-64TOZY0 | *2 |
| | | WD60PURX-64TOZY1 | *2 |
| | | WD60PURZ-85ZUFY1 | *2 |
| | WD62PURZ-74B3AY0 | *1, *2 | |
| | Seagate | ST6000VX001 | *2, *3 Discontinued in CY23Q4 |
| 5TB | Western Digital | WD50EFRX-68MYMN1 | *2 |
| | | WD50EFRX-68L0BN1 | *2 |
| | | WD50PURX-64TOZY0 | *2 |

| Capacity | Vendor | Model | Note |
|----------|-----------------|------------------|------------------------|
| 4TB | Western Digital | WD42PURZ-74B4YY0 | *1 |
| | | WD42PURZ-85B4YY0 | Discontinued in CQ1'23 |
| | | WD40PURX-64GVNY0 | |
| | | WD40PURX-64NZ6Y0 | |
| | | WD40PURZ-85TTDY0 | |
| | | WD40EFRX-68WT0N0 | |
| | | WD40PURZ-74AKKY0 | *1 |
| | | WD40PURZ-85AKKY0 | |
| | | WD30PURZ-74AKKY0 | *1 |
| | | WD30PURZ-85AKKY0 | |
| 3TB | Western Digital | WD30PURX-64P6ZY0 | |
| | | WD30PURZ-85GU6Y0 | |
| | | WD30EFRX-68EUZNO | |
| | | WD22PURZ-74B4ZY0 | *1 |
| | | WD22PURZ-85B4ZY0 | Discontinued in CY23Q3 |
| 2TB | Western Digital | WD20PURX-64P6ZY0 | |
| | | WD20PURZ-85GU6Y0 | |
| | | WD20EFRX-68EUZNO | |
| | | WD20PURZ-74AKKY0 | *1 |
| | | WD20PURZ-85AKKY0 | |

*1 The difference between "-74" and "-85" depends on the WD sales route.

*2 Please refer to page 2, not to fix two screws into bottom side of HDD.

*3 To use Seagate SkyHawks series, it is necessary to set the HDDSSC setting to "OFF" in advance. And need to choose the screws to install the HDDs. Please refer to page 15 for instructions.

3-2 HDD Compatibility Chart

WJ-NX300K
WJ-HXE400



20th October 2023

3.5" SATA – Advanced Format

Latest Firmware Version : V5.30 (NX300)
V1.11 (HXE400)

Current HDDs

| Capacity | Vendor | Model | Note |
|----------|-----------------|------------------|--------|
| 8TB | Western Digital | WD84PURZ-74B2YY0 | *1, *2 |
| | | WD84PURZ-85B2YY0 | |
| 6TB | Western Digital | WD64PURZ-74BWUY0 | *1, *2 |
| | | WD64PURZ-85BWUY0 | |
| 4TB | Western Digital | WD43PURZ-74BWPY0 | *1 |
| | | WD43PURZ-85BWPY0 | |
| | Seagate | ST4000VX016 | *3 |
| 3TB | Western Digital | WD33PURZ-74BWPY0 | *1 |
| | | WD33PURZ-85BWPY0 | |
| 2TB | Western Digital | WD23PURZ-74C5HY0 | *1 |
| | | WD23PURZ-85C5HY0 | |
| 1TB | Western Digital | WD11PURZ-74C5HY0 | *1 |
| | | WD11PURZ-85C5HY0 | |

Discontinued HDDs

| Capacity | Vendor | Model | Note |
|----------|------------------|------------------|----------------------------------|
| 6TB | Western Digital | WD63PURZ-74B4VY0 | *1 |
| | | WD63PURZ-85B4VY0 | Discontinued in CQ1'23 |
| | | WD60EFRX-68MYMN1 | *2 |
| | | WD60EFRX-68L0BN1 | *2 |
| | | WD60PURX-64TOZY0 | *2 |
| | | WD60PURX-64TOZY1 | *2 |
| | | WD60PURZ-85ZUFY1 | *2 |
| | WD62PURZ-74B3AY0 | *1, *2 | |
| | Seagate | ST6000VX001 | *2, *3 Discontinued in CY23Q4 |
| 5TB | Western Digital | WD50EFRX-68MYMN1 | *2 |
| | | WD50EFRX-68L0BN1 | *2 |
| | | WD50PURX-64TOZY0 | *2 |

| Capacity | Vendor | Model | Note |
|----------|-----------------|------------------|------------------------|
| 4TB | Western Digital | WD42PURZ-74B4YY0 | *1 |
| | | WD42PURZ-85B4YY0 | Discontinued in CQ1'23 |
| | | WD40PURX-64GVNY0 | |
| | | WD40PURX-64NZ6Y0 | |
| | | WD40PURZ-85TTDY0 | |
| | | WD40EFRX-68WT0N0 | |
| | | WD40PURZ-74AKKY0 | *1 |
| | | WD40PURZ-85AKKY0 | |
| | | WD30PURZ-74AKKY0 | *1 |
| | | WD30PURZ-85AKKY0 | |
| 3TB | Western Digital | WD30PURX-64P6ZY0 | |
| | | WD30PURZ-85GU6Y0 | |
| | | WD30EFRX-68EUZNO | |
| | | WD22PURZ-74B4ZY0 | *1 |
| | | WD22PURZ-85B4ZY0 | Discontinued in CY23Q4 |
| 2TB | Western Digital | WD20PURX-64P6ZY0 | |
| | | WD20PURZ-85GU6Y0 | |
| | | WD20EFRX-68EUZNO | |
| | | WD20PURZ-74AKKY0 | *1 |
| | | WD20PURZ-85AKKY0 | |

*1 The difference between "-74" and "-85" depends on the WD sales route.

*2 Please refer to page 2, not to fix two screws into bottom side of HDD.

*3 To use Seagate SkyHawks series, it is necessary to set the HDD SSC setting to "OFF" in advance. And need to choose the screws to install the HDDs. Please refer to page 15 for instructions.

3-2 HDD Compatibility Chart (Discontinued Product, Support ends in Nov. 2030)

WJ-NX200K

20th October 2023



Latest Firmware Version : V5.30

3.5" SATA – Advanced Format

Current HDDs

| Capacity | Vendor | Model | Note |
|----------|-----------------|------------------|--------|
| 8TB | Western Digital | WD84PURZ-74B2YY0 | *1, *2 |
| | | WD84PURZ-85B2YY0 | |
| 6TB | | WD64PURZ-74BWUY0 | *1 |
| | | WD64PURZ-85BWUY0 | |
| 4TB | | WD43PURZ-74BWPY0 | *1 |
| | | WD43PURZ-85BWPY0 | |
| 3TB | | WD33PURZ-74BWPY0 | *1 |
| | | WD33PURZ-85BWPY0 | |
| 2TB | | WD23PURZ-74C5HY0 | *1 |
| | | WD23PURZ-85C5HY0 | |
| 1TB | | WD11PURZ-74C5HY0 | *1 |
| | | WD11PURZ-85C5HY0 | |

Discontinued HDDs

| Capacity | Vendor | Model | Note |
|------------------|-----------------|------------------|------------------------|
| 6TB | Western Digital | WD63PURZ-74B4VY0 | *1 |
| | | WD63PURZ-85B4VY0 | Discontinued in CQ1'23 |
| | | WD60EFRX-68MYMN1 | *2 |
| | | WD60EFRX-68L0BN1 | *2 |
| | | WD60PURX-64TOZY0 | *2 |
| | | WD60PURX-64TOZY1 | *2 |
| | | WD60PURZ-85ZUFY1 | *2 |
| | | WD62PURZ-74B3AY0 | *1, *2 |
| | | WD62PURZ-85B3AY0 | |
| | | 5TB | Seagate |
| WD50EFRX-68MYMN1 | *2 | | |
| WD50EFRX-68L0BN1 | *2 | | |
| WD50PURX-64TOZY0 | *2 | | |

| Capacity | Vendor | Model | Note | | |
|----------|-----------------|------------------|------------------------|------------------|----|
| 4TB | Western Digital | WD42PURZ-74B4YY0 | *1 | | |
| | | WD42PURZ-85B4YY0 | Discontinued in CQ1'23 | | |
| | | WD40PURX-64GVNY0 | | | |
| | | WD40PURX-64NZ6Y0 | | | |
| | | WD40PURZ-85TTDY0 | | | |
| | | WD40EFRX-68WT0N0 | | | |
| | | WD40PURZ-74AKKY0 | *1 | | |
| | | WD40PURZ-85AKKY0 | | | |
| | | 3TB | | WD30PURZ-74AKKY0 | *1 |
| | | | | WD30PURZ-85AKKY0 | |
| 2TB | | WD30PURX-64P6ZY0 | | | |
| | | WD30PURZ-85GU6Y0 | | | |
| | | WD30EFRX-68EUZNO | | | |
| | | WD22PURZ-74B4ZY0 | *1 | | |
| | | WD22PURZ-85B4ZY0 | Discontinued in CY23Q3 | | |
| | | WD20PURX-64P6ZY0 | | | |
| | | WD20PURZ-85GU6Y0 | | | |
| | | WD20EFRX-68EUZNO | | | |
| | | WD20PURZ-74AKKY0 | *1 | | |
| | | WD20PURZ-85AKKY0 | | | |

*1 The difference between "-74" and "-85" depends on the WD sales route.

*2 Please refer to page 2, not to fix two screws into bottom side of HDD.

*3 To use Seagate SkyHawks series, it is necessary to set the HDDSSC setting to "OFF" in advance. And need to choose the screws to install the HDDs. Please refer to page 15 for instructions.

3-2 HDD Compatibility Chart (Discontinued Product , Support ends in Mar. 2026)

WJ-NV300K



20th October 2023

Latest Firmware Version : V2.30

3.5" SATA

Current HDDs

| Capacity | Vendor | Model | Note |
|----------|-----------------|------------------|------|
| 6TB | Western Digital | WD64PURZ-74BWUY0 | *1 |
| | | WD64PURZ-85BWUY0 | |
| 4TB | | WD43PURZ-74BWPY0 | *1 |
| | | WD43PURZ-85BWPY0 | |
| 3TB | | WD33PURZ-74BWPY0 | *1 |
| | | WD33PURZ-85BWPY0 | |
| 2TB | | WD23PURZ-74C5HY0 | *1 |
| | | WD23PURZ-85C5HY0 | |
| 1TB | | WD11PURZ-74C5HY0 | *1 |
| | | WD11PURZ-85C5HY0 | |

Discontinued HDDs

| Capacity | Vendor | Model | Note |
|----------|-----------------|------------------|------------------------|
| 6TB | Western Digital | WD63PURZ-74B4VY0 | *1 |
| | | WD63PURZ-85B4VY0 | Discontinued in CY23Q1 |
| | | WD60EFRX-68MYMN1 | |
| | | WD60EFRX-68L0BN1 | |
| | | WD60PURX-64T0ZY0 | |
| | | WD60PURX-64T0ZY1 | |
| | | WD60PURZ-85ZUFY1 | |
| | | WD62PURZ-74B3AY0 | *1 |
| | | WD62PURZ-85B3AY0 | |
| | | | Seagate |
| 5TB | Western Digital | WD50EFRX-68MYMN1 | |
| | | WD50EFRX-68L0BN1 | |
| | | WD50PURX-64T0ZY0 | |
| 4TB | Western Digital | WD42PURZ-74B4Y0 | *1 |
| | | WD42PURZ-85B4Y0 | Discontinued in CY23Q1 |
| | | WD40EURX-63BMCY0 | |
| | | WD40PURX-64GVNY0 | |
| | | WD40PURX-64NZ6Y0 | |
| | | WD40PURZ-85TTDY0 | |
| | | WD40PURZ-74AKKY0 | *1 |
| | | WD40PURZ-85AKKY0 | |
| | | WD40EFRX-68WT0N0 | |

| Capacity | Vendor | Model | Note |
|----------|-----------------|------------------|------------------------|
| 3TB | Western Digital | WD30PURZ-74AKKY0 | *1 |
| | | WD30PURZ-85AKKY0 | |
| | | WD30EURX-63T0FY0 | |
| | | WD30PURX-64P6ZY0 | |
| | | WD30PURZ-85GU6Y0 | |
| | | WD30EFRX-68EUZNO | |
| 2TB | Western Digital | WD22PURZ-74B4ZY0 | *1 |
| | | WD22PURZ-85B4ZY0 | Discontinued in CY23Q3 |
| | | WD20EURX-63T0FY0 | |
| | | WD20PURX-64P6ZY0 | |
| | | WD20PURZ-85GU6Y0 | |
| | | WD20PURZ-74AKKY0 | *1 |
| | | WD20PURZ-85AKKY0 | |
| | | WD20EFRX-68EUZNO | |
| 1TB | | WD10EURX-63FH1Y0 | |

*1 The difference between "-74" and "-85" depends on the WD sales route.

*2 Please refer to page 2, not to fix two screws into bottom side of HDD.

*3 To use Seagate SkyHawks series, it is necessary to set the HDDSSCs setting to "OFF" in advance. And need to choose the screws to install the HDDs. Please refer to page 15 for instructions.

3-2 HDD Compatibility Chart (Discontinued Product , Support ends in Mar. 2026)

WJ-HDE400 with WJ-NV300K

20th October 2023



Latest Firmware Version : V1.31

3.5" SATA

Current HDDs

| Capacity | Vendor | Model | Note |
|----------|-----------------|------------------|--------|
| 6TB | Western Digital | WD64PURZ-74BWUY0 | *1, *2 |
| | | WD64PURZ-85BWUY0 | |
| 4TB | | WD43PURZ-74BWPY0 | *1 |
| | | WD43PURZ-85BWPY0 | |
| 3TB | | WD33PURZ-74BWPY0 | *1 |
| | | WD33PURZ-85BWPY0 | |
| 2TB | | WD23PURZ-74C5HY0 | *1 |
| | | WD23PURZ-85C5HY0 | |
| 1TB | | WD11PURZ-74C5HY0 | *1 |
| | | WD11PURZ-85C5HY0 | |

Discontinued HDDs

| Capacity | Vendor | Model | Note |
|----------|-----------------|------------------|------------------------|
| 6TB | Western Digital | WD63PURZ-74B4VY0 | *1, *2 |
| | | WD63PURZ-85B4VY0 | Discontinued in CY23Q1 |
| | | WD60EFRX-68MYMN1 | *2 |
| | | WD60EFRX-68LOBN1 | *2 |
| | | WD60PURX-64TOZY0 | *2 |
| | | WD60PURX-64TOZY1 | *2 |
| | | WD60PURZ-85ZUFY1 | *2 |
| | | WD62PURZ-74B3AY0 | *1, *2 |
| | | WD62PURZ-85B3AY0 | |
| | | Seagate | ST6000VX001 |
| 5TB | Western Digital | WD50EFRX-68MYMN1 | *2 |
| | | WD50EFRX-68LOBN1 | *2 |
| | | WD50PURX-64TOZY0 | *2 |

| Capacity | Vendor | Model | Note | | |
|------------------|-----------------|------------------|------------------------|------------------|----|
| 4TB | Western Digital | WD42PURZ-74B4YY0 | *1 | | |
| | | WD42PURZ-85B4YY0 | Discontinued in CQ1'23 | | |
| | | WD40PURX-64GVNY0 | | | |
| | | WD40PURX-64NZ6Y0 | | | |
| | | WD40PURZ-85TTDY0 | | | |
| | | WD40EFRX-68WT0N0 | | | |
| | | WD40PURZ-74AKKY0 | *1 | | |
| | | WD40PURZ-85AKKY0 | | | |
| | | 3TB | | WD30PURZ-74AKKY0 | *1 |
| | | | | WD30PURZ-85AKKY0 | |
| WD30PURX-64P6ZY0 | | | | | |
| 2TB | | WD30PURZ-85GU6Y0 | | | |
| | | WD30EFRX-68EUZNO | | | |
| | | WD22PURZ-74B4ZY0 | *1 | | |
| | | WD22PURZ-85B4ZY0 | Discontinued in CY23Q3 | | |
| | | WD20PURX-64P6ZY0 | | | |
| | | WD20PURZ-85GU6Y0 | | | |
| | | WD20PURZ-74AKKY0 | *1 | | |
| WD20PURZ-85AKKY0 | | | | | |
| | | WD20EFRX-68EUZNO | | | |

*1 The difference between "-74" and "-85" depends on the WD sales route.

*2 Please refer to page 2, not to fix two screws into bottom side of HDD.

*3 To use Seagate SkyHawks series, it is necessary to set the HDDSSC setting to "OFF" in advance. And need to choose the screws to install the HDDs. Please refer to page 15 for instructions.

3-2 HDD Compatibility Chart (Discontinued Product , Support ends in Sep. 2025)

20th October 2023

WJ-NV200K



Latest Firmware Version : V2.62

3.5" SATA

Current HDDs

| Capacity | Vendor | Model | Note |
|----------|-----------------|------------------|------|
| 6TB | Western Digital | WD64PURZ-74BWUY0 | *1 |
| | | WD64PURZ-85BWUY0 | |
| 4TB | | WD43PURZ-74BWPY0 | *1 |
| | | WD43PURZ-85BWPY0 | |
| 3TB | | WD33PURZ-74BWPY0 | *1 |
| | | WD33PURZ-85BWPY0 | |
| 2TB | | WD23PURZ-74C5HY0 | *1 |
| | | WD23PURZ-85C5HY0 | |
| 1TB | | WD11PURZ-74C5HY0 | *1 |
| | | WD11PURZ-85C5HY0 | |

Discontinued HDDs

| Capacity | Vendor | Model | Note |
|----------|-----------------|------------------|------------------------|
| 6TB | Western Digital | WD63PURZ-74B4VY0 | *1 |
| | | WD63PURZ-85B4VY0 | Discontinued in CY23Q1 |
| | | WD60EFRX-68MYMN1 | |
| | | WD60EFRX-68L0BN1 | |
| | | WD60PURX-64TOZY0 | |
| | | WD60PURX-64TOZY1 | |
| | | WD60PURZ-85ZUFY1 | |
| | | WD62PURZ-74B3AY0 | *1 |
| | | WD62PURZ-85B3AY0 | |
| | | | Seagate |
| 5TB | Western Digital | WD50EFRX-68MYMN1 | |
| | | WD50EFRX-68L0BN1 | |
| | | WD50PURX-64TOZY0 | |
| 4TB | Western Digital | WD42PURZ-74B4YY0 | *1 |
| | | WD42PURZ-85B4YY0 | Discontinued in CY23Q1 |
| | | WD40EURX-63BMCY0 | |
| | | WD40PURX-64GVNY0 | |
| | | WD40PURX-64NZ6Y0 | |
| | | WD40PURZ-85TTDY0 | |
| | | WD40PURZ-74AKKY0 | *1 |
| | | WD40PURZ-85AKKY0 | |
| | | WD40EFRX-68WT0N0 | |

| Capacity | Vendor | Model | Note |
|----------|-----------------|------------------|------------------------|
| 3TB | Western Digital | WD30EURX-63TOFY0 | |
| | | WD30PURX-64P6ZY0 | |
| | | WD30PURZ-85GU6Y0 | |
| | | WD30EFRX-68EUZNO | |
| | | WD30PURZ-74AKKY0 | *1 |
| | | WD30PURZ-85AKKY0 | |
| 2TB | | WD22PURZ-74B4ZY0 | *1 |
| | | WD22PURZ-85B4ZY0 | Discontinued in CY23Q3 |
| | | WD20EURX-63TOFY0 | |
| | | WD20PURX-64P6ZY0 | |
| | | WD20PURZ-85GU6Y0 | |
| | | WD20PURZ-74AKKY0 | *1 |
| | | WD20PURZ-85AKKY0 | |
| | | WD20EFRX-68EUZNO | |
| 1TB | | WD10EURX-63FH1Y0 | |

*1 The difference between "-74" and "-85" depends on the WD sales route.

*2 Please refer to page 2, not to fix two screws into bottom side of HDD.

*3 To use Seagate SkyHawk series, it is necessary to set the HDDSSC setting to "OFF" in advance. And need to choose the screws to install the HDDs. Please refer to page 15 for instructions.

3-2 HDD Compatibility Chart (Discontinued Model)

WJ-ND400K
WJ-HD616K
WJ-HD716K
WJ-HDE400

Very Important Notification for Compatibility of i-PRO NVR/DVR's with AF (Advanced Format) HDD's

| ND400K | HD616K/716K | HDE400 | Note |
|-------------------|-------------------|-------------------|--|
| V3.20 or above | V2.30 or above | V1.20 or above | These versions are compatible with AF HDD's. (AF HDD has 4K-byte data in one sector, while legacy HDD has 512byte in one sector.) |
| V3.10 or below | V2.20 or below | V1.07 or below | These versions are not compatible with AF HDD's. If AF HDD will be installed into DVR's/NVR of these older versions, lack of recorded image/video, frequent restart of recorder, or some unexpected troubles may happen. |

3-2 HDD Compatibility Chart (Discontinued Product , Support ends in Sep. 2025)

20th October 2023

WJ-ND400K
WJ-HDE400



Latest Firmware Version : V6.10 (ND400K)

ND400K MUST be V3.20 or above. (Please refer to page 23)

V1.31 (HDE400)

3.5" SATA – Advanced Format

Current HDDs

| Capacity | Vendor | Model | Note |
|----------|-----------------|------------------|--------|
| 6TB | Western Digital | WD64PURZ-74BWUY0 | *1, *2 |
| | | WD64PURZ-85BWUY0 | |
| 4TB | Western Digital | WD43PURZ-74BWPY0 | *1 |
| | | WD43PURZ-85BWPY0 | |
| 3TB | Western Digital | WD33PURZ-74BWPY0 | *1 |
| | | WD33PURZ-85BWPY0 | |
| 2TB | Western Digital | WD23PURZ-74C5HY0 | *1 |
| | | WD23PURZ-85C5HY0 | |
| 1TB | Western Digital | WD11PURZ-74C5HY0 | *1 |
| | | WD11PURZ-85C5HY0 | |

Discontinued HDDs

| Capacity | Vendor | Model | Note |
|----------|-----------------|------------------|------------------------|
| 6TB | Western Digital | WD63PURZ-74B4VY0 | *1, *2 |
| | | WD63PURZ-85B4VY0 | Discontinued in CY23Q1 |
| | | WD60EFRX-68MYMN1 | *2 |
| | | WD60EFRX-68L0BN1 | *2 |
| | | WD60PURX-64TOZY0 | *2 |
| | | WD60PURX-64TOZY1 | *2 |
| | | WD60PURZ-85ZUFY1 | *2 |
| | | WD62PURZ-74B3AY0 | *1, *2 |
| | | WD62PURZ-85B3AY0 | |
| | | Seagate | ST6000VX001 |
| 5TB | Western Digital | WD50EFRX-68MYMN1 | *2 |
| | | WD50EFRX-68L0BN1 | *2 |
| | | WD50PURX-64TOZY0 | *2 |
| 4TB | Western Digital | WD42PURZ-74B4YY0 | *1 |
| | | WD42PURZ-85B4YY0 | Discontinued in CY23Q3 |
| | | WD40PURX-64GVNY0 | |
| | | WD40PURX-64NZ6Y0 | |
| | | WD40PURZ-85TTDY0 | |
| | | WD40PURZ-74AKKY0 | *1 |
| | | WD40PURZ-85AKKY0 | |
| | | WD40EFRX-68WT0N0 | |

| Capacity | Vendor | Model | Note |
|----------|-----------------|------------------|------------------------|
| 3TB | Western Digital | WD30PURX-64P6ZY0 | |
| | | WD30PURZ-85GU6Y0 | |
| | | WD30EFRX-68EUZNO | |
| | | WD30PURZ-74AKKY0 | *1 |
| 2TB | Western Digital | WD30PURZ-85AKKY0 | |
| | | WD22PURZ-74B4ZY0 | *1 |
| | | WD22PURZ-85B4ZY0 | Discontinued in CY23Q3 |
| | | WD20PURX-64P6ZY0 | |
| | | WD20PURZ-85GU6Y0 | |
| | | WD20PURZ-74AKKY0 | *1 |
| | | WD20PURZ-85AKKY0 | |
| | | WD20EFRX-68EUZNO | |

*1 The difference between "-74" and "-85" depends on the WD sales route.

*2 Please refer to page 2, not to fix two screws into bottom side of HDD.

*3 To use Seagate SkyHawks series, it is necessary to set the HDDSSC setting to "OFF" in advance. And need to choose the screws to install the HDDs. Please refer to page 15 for instructions.

3-2 HDD Compatibility Chart (Discontinued Product , Support ends in Jun. 2024)

20th October 2023

WJ-HD616K
WJ-HD716K
WJ-HDE400



Current Firmware Version : V2.63 (HD616/716)
V1.20 (HDE400)

3.5" SATA – Advanced Format

HD616/HD716 MUST be V2.30 or above. (Please refer to page 23)

Current HDDs

| Capacity | Vendor | Model | Note |
|----------|-----------------|------------------|--------|
| 6TB | Western Digital | WD64PURZ-74BWUY0 | *1, *2 |
| | | WD64PURZ-85BWUY0 | |
| 4TB | | WD43PURZ-74BWPY0 | *1 |
| | | WD43PURZ-85BWPY0 | |
| 3TB | | WD33PURZ-74BWPY0 | *1 |
| | | WD33PURZ-85BWPY0 | |
| 2TB | | WD23PURZ-74C5HY0 | *1 |
| | | WD23PURZ-85C5HY0 | |
| 1TB | | WD11PURZ-74C5HY0 | *1 |
| | | WD11PURZ-85C5HY0 | |

Discontinued HDDs

| Capacity | Vendor | Model | Note |
|----------|-----------------|------------------|------------------------|
| 6TB | Western Digital | WD63PURZ-74B4VY0 | *1, *2 |
| | | WD63PURZ-85B4VY0 | Discontinued in CY23Q1 |
| | | WD62PURZ-74B3AY0 | *1, *2 |
| | | WD62PURZ-85B3AY0 | |
| | | WD60EFRX-68MYMN1 | *2 |
| | | WD60EFRX-68L0BN1 | *2 |
| | | WD60PURX-64TOZY0 | *2 |
| | | WD60PURX-64TOZY1 | *2 |
| | | WD60PURZ-85ZUFY1 | *2 |
| | | Seagate | ST6000VX001 |
| 5TB | Western Digital | WD50EFRX-68MYMN1 | *2 |
| | | WD50EFRX-68L0BN1 | *2 |
| | | WD50PURX-64TOZY0 | *2 |
| 4TB | | WD42PURZ-74B4YY0 | *1 |
| | | WD42PURZ-85B4YY0 | Discontinued in CY23Q3 |
| | | WD40PURX-64GVNY0 | |
| | | WD40PURX-64NZ6Y0 | |
| | | WD40PURZ-85TTDY0 | |
| | | WD40PURZ-74AKKY0 | *1 |
| | | WD40PURZ-85AKKY0 | |
| | | WD40EFRX-68WT0N0 | |

| Capacity | Vendor | Model | Note |
|----------|-----------------|------------------|------------------------|
| 3TB | Western Digital | WD30PURZ-74AKKY0 | *1 |
| | | WD30PURZ-85AKKY0 | |
| | | WD30PURX-64P6ZY0 | |
| | | WD30PURZ-85GUGY0 | |
| 2TB | | WD30EFRX-68EUZNO | |
| | | WD22PURZ-74B4ZY0 | *1 |
| | | WD22PURZ-85B4ZY0 | Discontinued in CY23Q3 |
| | | WD20PURX-64P6ZY0 | |
| | | WD20PURZ-85GUGY0 | |
| | | WD20PURZ-74AKKY0 | *1 |
| | | WD20PURZ-85AKKY0 | |
| | | WD20EFRX-68EUZNO | |

*1 The difference between "-74" and "-85" depends on the WD sales route.

*2 Please refer to page 2, not to fix two screws into bottom side of HDD.

*3 To use Seagate SkyHawks series, it is necessary to set the HDDSSC setting to "OFF" in advance. And need to choose the screws to install the HDDs. Please refer to page 15 for instructions.

4. Common information

| | |
|--|-----------|
| 4-1 SSC setting procedure | 34 |
|--|-----------|

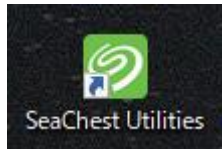
| | |
|---|-----------|
| 4-2 Recorder Maintenance Guide | 39 |
|---|-----------|

1. Download SeaChest Utilities from the following URL then install it to Windows PC.

<https://www.seagate.com/support/software/seachest/>

2. Connect target HDD via USB to the PC which SeaChest Utilities is installed.

3. Double click SeaChest Utilities icon on desktop and launch SeaChest Utilities.



4. Enter the following command from Windows Command Prompt.

Seachest_Basics_x64_windows.exe --scan

```
C:\Program Files\Seagate\SeaChest>SeaChest_Basics_x64_windows.exe --scan
-----
SeaChest_Basics - Seagate drive utilities - NVMe Enabled
Copyright (c) 2014-2022 Seagate Technology LLC and/or its Affiliates, All Rights Reserved
SeaChest_Basics Version: 3.3.1-3_2_1 X86_64
Build Date: Jul 26 2022
Today: Wed Nov 2 09:43:49 2022
-----
Vendor   Handle   Model Number   Serial Number   FwRev
-----
NVMe     PD0      KRG4A7NV256G  TOSHIBA MEMORY 61UPG2HTQS12   AFPA1101
ST4000VX PD1      016-3CV104    152D20337A0C
```

PC drive
Target drive

Seagate Model# won't be displayed because HDD is connected via USB bridge chip.
Check ID# (PD1 for above case) of target drive.

5. Confirm the current SSC condition by entering the following command.

Seachest_Configure_x64_windows.exe -d PD1 --ssc info

```
C:\Program Files\Seagate\SeaChest>SeaChest_Configure_x64_windows.exe -d PD1 --ssc info
-----
SeaChest_Configure - Seagate drive utilities - NVMe Enabled
Copyright (c) 2014-2022 Seagate Technology LLC and/or its Affiliates, All Rights Reserved
SeaChest_Configure Version: 2.1.0-3_2_1 X86_64
Build Date: Jul 26 2022
Today: Wed Nov  2 09:47:41 2022
-----
¥¥.¥PhysicalDrive1 - 016-3CV104, - - - ATA
SSC Feature is set to the drive's default value
```

default value : SSC Feature is enabled
(SSC is "ON")

6. Turn off SSC by entering the following command.

Seachest_Configure_x64_windows.exe -d PD1 --ssc disable

```
C:\Program Files\Seagate\SeaChest>SeaChest_Configure_x64_windows.exe -d PD1 --ssc disable
-----
SeaChest_Configure - Seagate drive utilities - NVMe Enabled
Copyright (c) 2014-2022 Seagate Technology LLC and/or its Affiliates, All Rights Reserved
SeaChest_Configure Version: 2.1.0-3_2_1 X86_64
Build Date: Jul 26 2022
Today: Wed Nov 2 09:50:50 2022
-----

¥¥.¥PhysicalDrive1 - 016-3CV104 - - - ATA
Successfully set SSC feature to disabled
Please power cycle the drive to make the change take effect.
```

Power cycle the drive to make the change take effect.
(No need to close SeaChest Utilities during power cycle)

7. Confirm SSC setting had been changed by entering the following command.

Seachest_Configure_x64_windows.exe -d PD1 --ssc info

```
C:\Program Files\Seagate\SeaChest>SeaChest_Configure_x64_windows.exe -d PD1 --ssc info
=====
SeaChest_Configure - Seagate drive utilities - NVMe Enabled
Copyright (c) 2014-2022 Seagate Technology LLC and/or its Affiliates, All Rights Reserved
SeaChest_Configure Version: 2.1.0-3_2_1 X86_64
Build Date: Jul 26 2022
Today: Wed Nov  2 09:53:28 2022
=====
¥¥.¥PhysicalDrive1 - 016-3CV104 - 152D20337A0C - - ATA
SSC Feature is disabled
```

SSC is "OFF"

8. Power off USB-SATA converter and then remove the HDD from the converter.

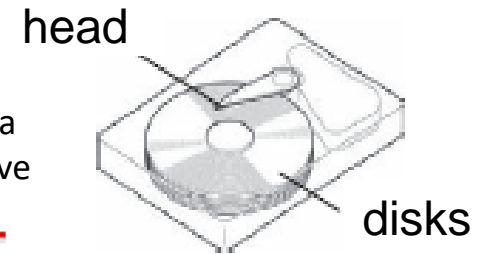
Introduction

As network disk recorders used for security system generally operate all-year-round, they need regular maintenance to avoid system failures and to keep their performance.

What is a hard disk drive?

What is a hard disk drive?

- A hard disk drive (an HDD) is a device which reads and writes digital data magnetically with the disks (platters) that spin and the head floating above the disks.

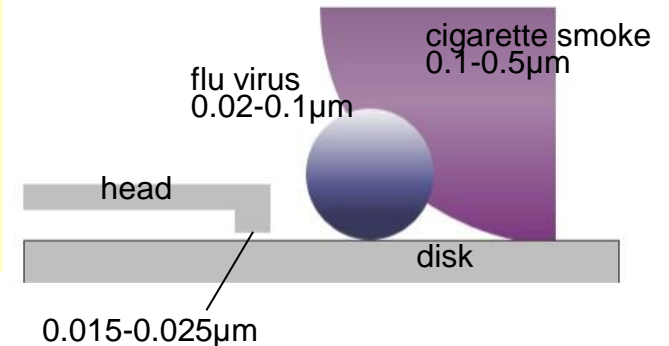


Points to Note

Point # 1 Avoid Vibration

The magnetic head floating above the disks in an HDD is set extremely close to the disks with the spacing that even cigarette smoke or flu virus cannot go through. Therefore, vibration can cause head crash and generate tiny dust if the head gets out of correct position. This results in creating fatal scratches in an HDD. Please install your recorder in a stable place away from declination, vibration or physical impact. Also, as an impact of sound (sound pressure) **such as the radiation sound from gas distinguishing agent system** can affect the speed of data transfer on HDDs, please install your recorder in the place without loud noise.

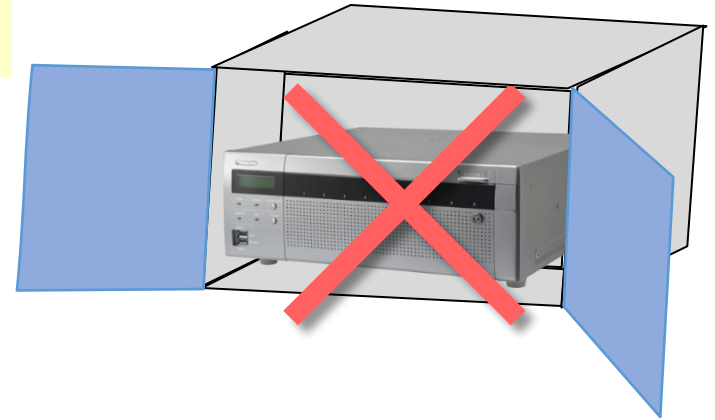
HDD = Precision Device



Point # 2 Keep Your Recorder from Getting Hot

Keeping HDDs exposed to high temperature results in the deterioration of its head and disks, and it can shorten the HDD life as well. Please consider ventilation when installing. The ambient operating temperature is 5 degrees Celsius to 45 degrees Celsius (the recommended temperature is 25 degrees Celsius).

Consider Ventilation When Installing



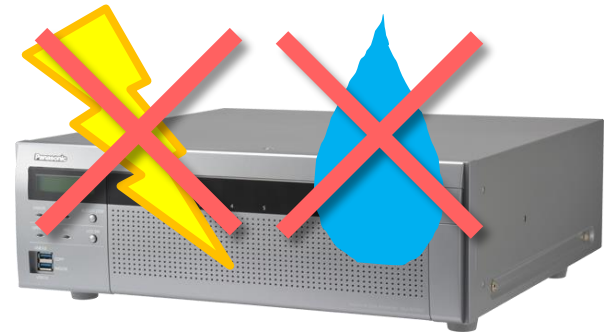
Point # 3 Avoid Static Electricity and Condensation

Static electricity can be the cause of electronic parts failure in an HDD. Condensation can cause a malfunction of a recorder as the head sticks to the disk due to the water.

Condensation occurs;

- when relocating the recorder to a place with sudden change in temperature and humidity.
- in the room just after heated.
- when the recorder is relocated from the cooled place to the heated place with high humidity.

Prevent Static Electricity and Condensation



Regular Maintenance is Necessary for a Network Disk Recorder

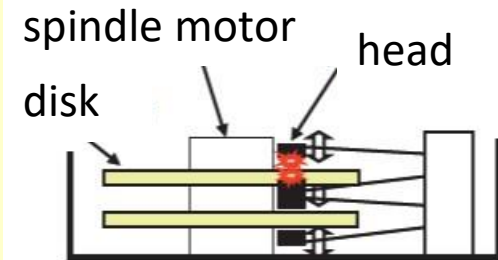
As a network disk recorder has HDDs for data storage, regular maintenance is necessary to use the recorder under its optimal conditions.

The Major Causes of Network Disk Recorder Failure

The Major causes of network disk recorder failure results from HDD malfunctions as below.

- The head crashes on the disk due to vibration or impact on the recorder and that creates scratches on the disk.
- Operating your recorder in high temperature environment causes the incorrect spacing between the head and the disks and that causes a head crush and creates scratches on the disk.
- Non-proper spin of the motor and the deterioration of the head's characteristics occur due to the long term use of HDDs. These can cause the write/ read error. The scratches on the disk gets larger in several months and causes a recorder failure.

Cutaway of an HDD



Tips for the Stable Operation of Your Network Disk Recorder

As the parts in a disk recorder are consumable, it is necessary to maintain your recorder regularly. The consumable parts in a network disk recorder are the followings.

HDD Unit / cooling fan / built-in backup battery / damper rubber for fixing HDDs. (Please note that the applied parts varies depending on the models.)

Maintenance including parts exchange leads to the stable operation of your recorder.

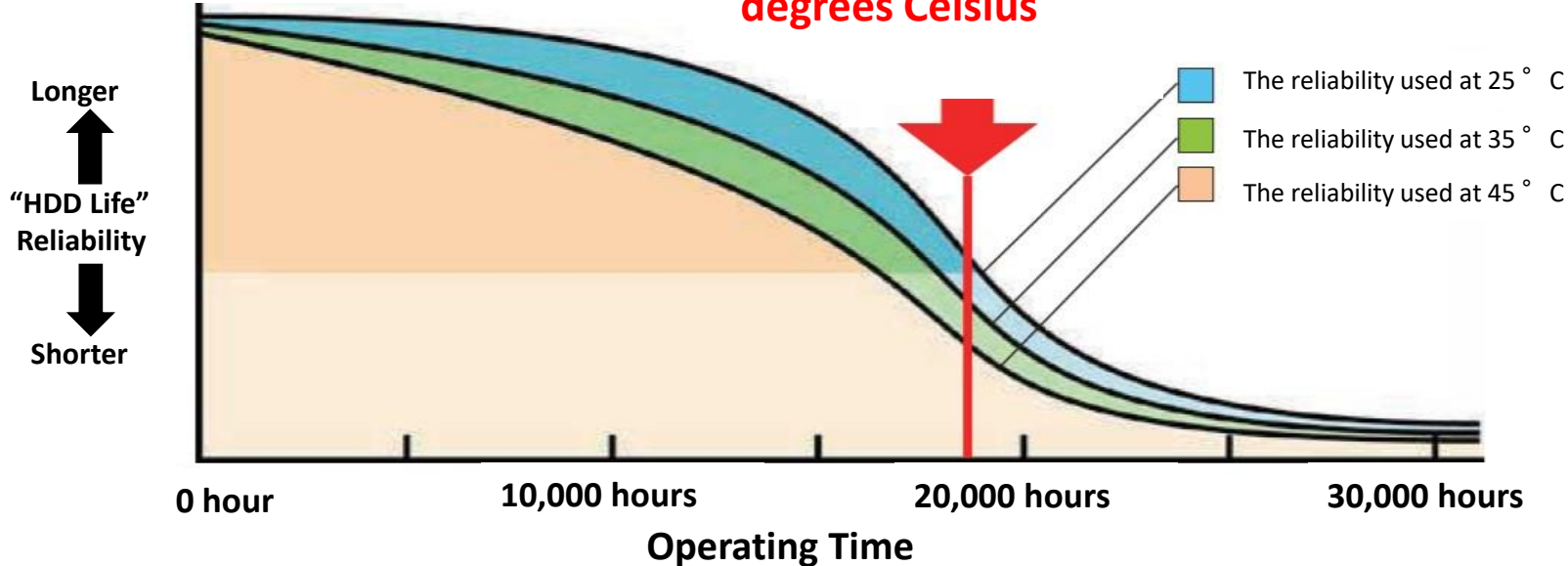
Estimated Replacement Period of an HDD

Although the HDD life differs depending on the usage environment, an HDD is certainly a consumable device. When used at an ambient temperature of 25 degrees Celsius, errors such as write error may start to occur at the operating time of 20,000 hours. When it reaches over 30,000 hours, the HDD can die due to the deterioration of the read/ write head or the motor in it. Keep the ambient temperature under 25 degrees Celsius and replace HDDs at the point of 18,000 hours for your secure data management. Please note that this is our estimated replacement period for reference and does not guarantee the life of your HDDs.

Hour Meter:
Approx. 9,000h = 1 year, : Approx. 18,000h = 2 years, Approx. 26,000h = 3 years, Approx. 35,000h = 4 years, Approx. 44,000h = 5 years

HDD Life Characteristics

- Excerpted from Our HDD Reliability Data



HDD hour meter warning

HDD hour meter warning is a function that performs a warning when the operating time of an HDD reaches a specified level. With default setting, it performs a warning at the operating time of 20,000 hours where errors such as write error can start to occur. As described on the previous slide, the reliability of an HDD starts to decrease rapidly before the operating time reaches 20,000 hours. Therefore we recommend to replace HDDs at the point of 18,000 hours to prevent possible failures and manage data securely.

Maintenance > System management

System information | HDD information | System management

System setup

| | | |
|----------------------------------|---------|---|
| Error output duration | 2 s | ▼ |
| Error buzzer duration | 2 s | ▼ |
| Safe shutdown time | 10 s | ▼ |
| HDD stand-by control mode | Off | ▼ |
| HDD hour meter warning | 20000 h | ▼ |
| Auto data delete | Off | ▼ |
| Camera time auto synchronization | On | ▼ |

Logs

| | |
|---------------|--------|
| Access log | View > |
| Operation log | View > |
| Network log | View > |

Functions for maintenance

| | |
|--|-----------|
| Registration of license (This product, camera extension, etc.) | Setup > |
| Registration of license (Security) | Setup > |
| Registration of license (Optional extension) | Setup > |
| Reset all settings | Execute > |
| Save data (to USB medium) | Execute > |
| Load data (from USB medium) | Execute > |

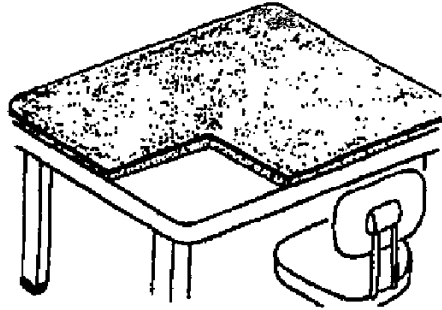
Firmware update

| | |
|-----------------|-----------|
| Firmware update | Execute > |
| Other | Setup > |

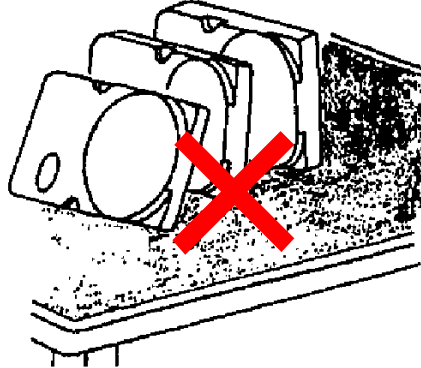
4-2 Recorder Maintenance Guide

For All models

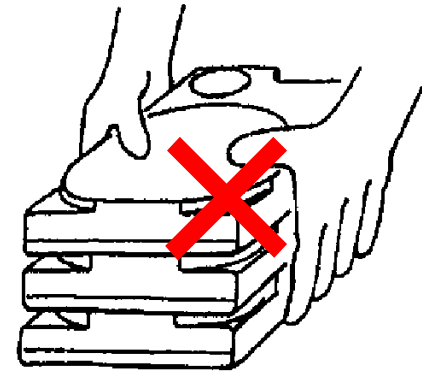
To Prevent HDD troubles



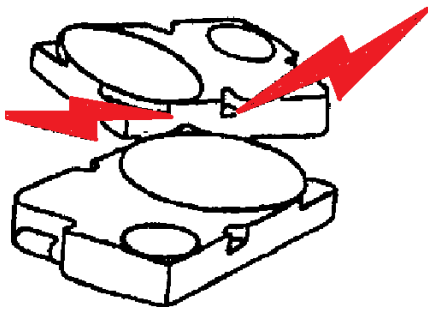
Use Antistatic & shock prevention mat



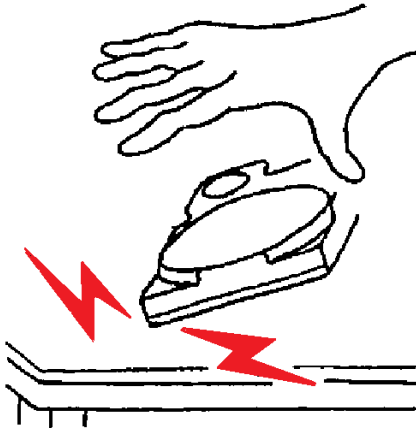
Do not place vertically



Do not stack



Do not hit



Do not drop



Do not use a regular electric screwdriver