

# |||i-PRO

The Power of Truth

**NEW**

## MANAGE YOUR DIGITAL EVIDENCE WITH i-PRO



# *i-PRO SECURE CITIES*

## i-PRO PUBLIC SAFETY AND INTELLIGENT SURVEILLANCE SOLUTIONS, WORKING TOGETHER FOR LAW ENFORCEMENT AND MUNICIPALITIES

The i-PRO Secure Cities program delivers the most comprehensive portfolio of industry leading technologies combined with highly experienced engineering, sales and support personnel who understand the demands and challenges municipalities face today. By seamlessly integrating our best-in-class law enforcement technologies, imaging solutions, video and access management platforms, and intelligent analytics, the i-PRO Secure Cities program greatly enhances security and municipality operations. And it offers the performance, reliability, cost-efficiency and personal privacy local government officials and citizens can trust.

The i-PRO Secure Cities program provides innovative solutions for:

- Law Enforcement Digital Evidence Capture and Management
- Municipal/Law Enforcement Surveillance and Security
- Traffic Monitoring
- Public Health and Safety Compliance
- Public Events and Venues
- Mass Transportation Hubs
- Schools and Universities

### A COMPREHENSIVE SECURITY SOLUTION FOR A SAFER CITY

The i-PRO Secure Cities program is a comprehensive initiative designed to provide the best in technology, incentives, tools and ongoing support. Our technology experts can help public safety and local government officials navigate the entire process of implementing smart technologies for smart city applications – defining needs, setting budgets, and securing funding for system design, installation, implementation and support.

Here's what makes the i-PRO Secure Cities program different:

- One Partner
- Contracts and Grants
- Complete Solution
- Upgrade Program
- 60 Years Experience
- U.S.-Based Tech Support
- Training & Support
- Advanced Features

From our new body-worn camera with a 12H field-swappable battery and evidence management solutions for the new age of law enforcement, to our comprehensive offering of open-platform surveillance and security system solutions, the i-PRO Secure Cities program delivers the best in integrated systems technology and superior personalized support to keep municipalities running safer and smoother.



# NEW i-PRO BODY-WORN CAMERA BWC4000 WITH DETACHABLE BATTERY



Built on i-PRO Americas Inc.'s tradition of video surveillance excellence for law enforcement, the new and improved i-PRO body-worn camera with a detachable battery keeps your officers on the street. Featuring a two-piece design, the BWC4000 is IP67 / MIL-STD-810H rated to provide officers with a more reliable way to capture video and audio evidence in nearly any condition.

i-PRO's BWC4000 records in 1080P / 720P and seamlessly integrates with i-PRO's Unified Digital Evidence™ management software. The BWC4000, in unison with i-PRO's in-car video systems and fixed-surveillance cameras, forms a unified evidence management platform that preserves the chain of custody.

## KEY FEATURES

**NEW** Detachable Battery

**NEW** H.264 / H.265 Video Compression

**NEW** MP4 Video File Format

**NEW** LCD Menu for Tagging

Rugged IP67 and MIL-STD-810H Architecture

1080p / 720p / 360p Resolution

16:9 & 4:3 Aspect Ratio

4 Microphones for Advanced Noise Reduction

Compatible with ICV4000 In-Car Video System

Built-in GPS, WLAN and Bluetooth LE

## GENERAL

<b>Model Number</b>	i-PRO Body-Worn Camera WV-BWC4000
<b>HARDWARE SPECS</b>	
<b>Dimensions (H x W x D)</b>	3.37 x 2.75 x 0.94 Inches / 86 x 70 x 24 mm
<b>Weight</b>	6.0 oz
<b>Drop Test</b>	6' Rating
<b>Waterproof Rating</b>	IP67 (IEC60529)
<b>Field of View / Aspect Ratio</b>	[16:9 Mode] Horizontal: 137 °** Vertical: 79 ° (Diagonal: 157°**) [4:3 Mode] Horizontal: 115 ° Vertical: 87 ° (Diagonal: 143°**)
<b>Video Storage</b>	128GB Internal SD, Media Lock on SD Storage Card
<b>Image Stabilization</b>	6-Axis Gyro, Selectable on Playback
<b>Battery / Battery Life</b>	Li-ion Detachable / 12 Hours Standard Runtime
<b>Warranty</b>	Main Unit: 3 Years, Battery: 1 Year
<b>Operating Temperature</b>	-20°C to +50°C [-4°F to +122°F]

## VIDEO / CAMERA / AUDIO

<b>Video Resolutions Available</b>	[16:9] 1080P / 720P / 360P [4:3] 1200P / 960P / 480P
<b>Video Format</b>	MPEG-4 Part 14
<b>Robustness</b>	MIL-STD-810H Salt Fog, Vibration, Shock, Temperature
<b>Frame Rate (FPS)</b>	30 fps
<b>Low Light Sensitivity</b>	0.08lx Color
<b>Microphones</b>	4 with Advanced Noise Reduction
<b>Audio Format</b>	AAC
<b>Pre-Record Video</b>	Configurable up to 3 Minutes

## ACCESSORIES / OPTIONS

<b>WV-BWC4000</b>	Body-Worn Camera
<b>WV-BWC40D8</b>	8 Bay Docking Station and Charger Only (Require IPS-BWC-AC100W)
<b>IPS-BWC-CTB</b>	Common Trigger Box + Power Cable (VPU MK3 Installations Only)
<b>IPS-BWC-ETH-NOPOE</b>	3' Ethernet NoPoE for VPU MK3 /CTB Installations Only
<b>IPS-BWC-ETH-NOPOEX</b>	25' Ethernet NoPoE for VPU MK3 /CTB Installations Only
<b>WV-BWC40D1A</b>	Single Dock Vehicle or In-Station (Requires 12V Harness or AC)
<b>IPS-BWC4-12V-WIRE</b>	12V Wiring Harness for Single Dock or Single Charge in Vehicle
<b>IPS-ICV-ETH25GRN</b>	25' Ethernet for Single Dock in Vehicle
<b>WV-BWC40C1A</b>	Single Battery Charger Only (Requires 12V Harness or AC)
<b>WV-BWC40C8</b>	8-Bay Battery Charger Only (Require IPS-BWC-AC100W)
<b>WV-BWC40B1</b>	BWC4000 Spare Battery
<b>IPS-BWC4-MNT-KIT</b>	BWC4000 Mount Kit
<b>IPS-BWC-AC100W</b>	110W AC Adapter for 8-Bay Dock and 8-Bay Charger
<b>IPS-BWC-AC65W</b>	65W AC Adapter for Single Dock and Single Charger
<b>IPS-BWC-8DOCWALL</b>	Wall Mount for 8-Bay Docking Station
<b>IPS-BWC-8CHGWALL</b>	Wall Mount for 8-Bay Battery Charger
<b>IPS-BTS-SENSOR</b>	Holster Sensor for BWC Record Triggering

## RUGGED IP67 AND MIL-STD-810H ARCHITECTURE

i-PRO's body-worn camera features rugged-built quality with an IP67 rating and MIL-STD-810H architecture, so the evidence capture continues uninterrupted, even in the most challenging outdoor environments, and it utilizes the versatile Klick Fast™ mounting system.

## VIDEO/RESOLUTIONS AVAILABLE [16:9] 1080P / 720P / 360P [4:3] 1200P / 960P / 480P

Recording evidence in 1080p, 720p and 360p, the i-PRO BWC4000 provides crystal-clear video that accelerates convictions in court.

## HANDS-FREE RECORDING ACTIVATION

i-PRO's BWC4000 is activated via wireless LAN or Bluetooth from a variety of triggers. Options include light bar, siren, G-force sensor, among others. Integration with the ICV4000 in-car system allows the recording to start simultaneously on the vehicle and body-worn systems.

## ADDITIONAL FEATURES

- One Touch Record
- LCD Screen
- Time/Date Stamp
- File Tagging Menu
- Media Password Protection / 256AES
- Recharge Time 4 Hours
- GPS Location Tagging and Time Sync
- Wireless LAN IEEE 802.11 a/b/g/n/ac
- Embedded Bluetooth LE V4.1
- In-Car Video Integration
- FIPS 140-2 Security Standard
- Docking Station Single/8 Bay



WV-BWC40D1A



WV-BWC40D8



WV-BWC40C8



WV-BWC40C1A



WV-BWC40B1



IPS-BWC-CTB

# NEW i-PRO ICV4000 FHD & VC35 (AS-1) FRONT CAMERA



## ICV4000 360° FHD

The new i-PRO Americas Inc. ICV4000 360° FHD in-car digital video recording system offers industry-leading image quality for unmatched critical mobile video evidence capture. The WV-VC35 Full HD 1080p front camera delivers amazing clarity and color reproduction even in low light. The ICV4000 system supports up to four additional HD cameras, for complete 360 degree situational awareness.

- Full HD 1080p high-quality video evidence capture
- Unparalleled 360 degree recording and viewing
- Supports up to two 512GB solid state drives with 256AES encryption
- Full integration with the BWC4000 Body Worn Camera, with field swappable battery
- Compatible WV-VC35 front camera offers full color in extreme low-light conditions, with
- Compatible WV-VC35 front camera offers industry-leading, high resolution, 86 degree wide-angle FOV
- Available wireless microphone transmits quality audio up to one mile
- Compatible with Unified Digital Evidence (UDE) On-Premise and ClouDE Hosted DEMS

### KEY FEATURES

- NEW** Improved Hi-Speed Video Processor
  - NEW** MP4 Video File Format
  - NEW** Built-in GPS, Dual 802.11ac Wi-Fi Support, and Bluetooth 4.2LE
  - NEW** Dual SSD Capability Up to 1TB with 256 AES Encryption
- Tested to MIL-STD-810H Standards
- 1080p / 720p / 360p Configurable Resolution
- Compatible with i-PRO Public Safety VC30, VC31, VC32, VC35, and VCF41P Cameras
- Record up to five High-resolution Cameras at the Same Time

## GENERAL

<b>Model Number</b>	WJ-VPU4000
<b>VIDEO RECORDER SPECIFICATIONS</b>	
<b>Dimensions (W x H x D)</b>	7.0" (W) x 3.44" (H) x 6.1" (D)
<b>Weight</b>	4.0 lbs
<b>Durability</b>	Rugged Design to Withstand Extreme Heat and Vibration MIL-STD-810H, UL62368
<b>Operating Temperature</b>	-10°C to +50°C {14°F to +122°F}
<b>Operating Humidity</b>	10% to 80% (Non-Condensing)
<b>Video Storage</b>	256GB / 512GB SSD i-PRO Only, 2 Bays Removable / Lockable, Up to 1TB
<b>Media Encryption</b>	256 AES
<b>Video File Format</b>	MP4
<b>Video Compression</b>	H.264
<b>Audio</b>	3 Input Channels RCA Connectors, Using AAC
<b>Power Input</b>	12VDC Operating Range 10.0-16.0VDC
<b>Power Consumption</b>	12VDC (Max w/5 Cameras) 56.4W
<b>Interface</b>	5-100Mbps Ethernet, 2-1Gbps Ethernet, 1-100Mbps BWC Dock Radar-RS232C, Analog Audio-In-Car Mic, 2x-Analog for Wireless Microphone
<b>Wireless</b>	802.11a/b/g/n/ac 2x Modules 2x Antennas each, 2.4GHz/5GHz
<b>Bluetooth</b>	Bluetooth 4.2 LE
<b>GPS</b>	Built-in, SMA Connector
<b>GPIO</b>	16 Inputs, 4 Outputs
<b>Impact Sensor</b>	Built-in WV-VC35 Front Camera, Configurable Sensitivity
<b>Mounting Bracket</b>	Bracket Included for Trunk / Console Mounting
<b>Antenna</b>	Accessory - 6 Lead Shark Fin, 4x-2.4/5GHz, 1x-BT, 1x-GPS
<b>Battery Backup Unit</b>	Included - 50W Capacity Automatic Switching / Configurable Shutdown
<b>Warranty</b>	Main Unit: 3 Years, Battery Backup Unit: 1 Year

## ACCESSORIES / OPTIONS

<b>WJ-VPU4000</b>	VPU4000 Recording Unit Only
<b>IPS-ICV4-ACC</b>	VPU4000 Accessory/Cable Kit - Includes: <ul style="list-style-type: none"> <li>■ 256SSD w/256 AES Encryption</li> <li>■ Power Distribution Box &amp; Cables</li> <li>■ Battery Backup Unit</li> <li>■ 3 Ethernet 25' Cables (Black, Yellow, Blue)</li> </ul>
<b>IPS-ICV4-256SSD</b>	256GB SSD w/256 AES Encryption
<b>IPS-ICV4-512SSD</b>	512GB SSD w/256 AES Encryption
<b>IPS-ICV4-ANT-BL</b>	Antenna Shark Fin 6-in-1 Antenna, Bolt-On, Black
<b>IPS-ICV4-ANT-WH</b>	Antenna Shark Fin 6-in-1 Antenna, Bolt-On, White
<b>WV-VC35</b>	Front Compact Wide Angle Camera
<b>WV-VC32</b>	Side/Rear Camera (Also Order Side Cable ARB-CABLSIDE)
<b>WV-VC31</b>	Back Seat Camera with Infrared
<b>WV-VC30</b>	Front 30x Zoom Camera
<b>ARB-M90</b>	Wireless Mic Transmitter/Receiver/Desktop Charger Kit 900MHz
<b>ARB-M24</b>	Wireless Mic Transmitter/Receiver/Desktop Charger Kit 2.4GHz



Front Camera

Video Processing Unit

Rear Seat Camera

Side View Camera

## FRONT CAMERA (WV-VC35)

### FEATURES

**Resolution:** Imaging Mode: 16:9  
H.264 1920 x 1080 / 1280 x 720 / 640 x 360 / 320 x 180, 30fps

**Zoom Range:** 1x Optical; 3x Digital

**Image Sensor:** 1/3 CMOS

#### Low-light Capability:

Color: 0.03 lx (0.0028 footcandle) (F2.2, AGC: On [High])

B/W: 0.02 lx (0.0019 footcandle) (F2.2, AGC: On [High])

**Angular Field of View:** Horizontal: 86° Vertical: 46°

**Auto Adjustments:** Focus, White Balance

**Day/Night:** On / Off/Auto

**AGC:** On (Low) / On (Mid) / On (High) / Off

**Weight:** .43 lbs.

**Dimensions:** 4.5" (W) x 1.77" (H) x 1.45" (D) (Excluding Mount)

**File Format / Compression:** MP4, H.264 / H.265

**G-Force Impact Sensor:** Internal Built-In

### CONTROLS (HARDWARE BASED)

**Record:** Front and Rear Record Indication Mode Button to Optimize for Lighting

### CONTROLS (SOFTWARE BASED)

Manual Zoom

Auto Focus

Record (Front and Rear Record Indication on Hardware)

## BACK SEAT CAMERA (WV-VC31)

### FEATURES

**Resolution:** Imaging Mode: 16:9

H.264 1280 x 720 / 640 x 360 / 320 x 180, 30fps (Max)

**Image Sensor:** 1/4 MOS

**Low-light Capability:** B/W: 0.0 lx (When the IR-LED is Lit)

**Infrared:** Auto

**Angular Field of View:** Horizontal: 150°, Vertical: 93°

**Auto Adjustments:** White Balance

**Day/Night:** Auto

**AGC:** Auto

**Wide Dynamic Range:** Auto

**Weight:** 0.79 lb

**Dimensions:** .3.94" (W) x 1.69" (H) x 1.85" (D)

(Excluding Mount and Projecting Parts)

## SIDE/REAR VIEW CAMERA (WV-VC32)

### FEATURES

**Resolution:** Imaging mode: 16:9

H.264 1280 x 720 / 640 x 360 / 320 x 180, 30fps (Max)

**Image Sensor:** 1/4 MOS

**Low-light Capability:** Color: 1.5 lx | B/W: 1.0 lx

**Angular Field of View:** Horizontal: 150°, Vertical: 93°

**Auto Adjustments:** White Balance

**Day/Night:** Auto

**AGC:** Auto

**Wide Dynamic Range:** Auto

**Weight:** 0.62 lb

**Dimensions:** .3.94" (W) x 1.69" (H) x 1.85" (D)

(Excluding Mount and Projecting Parts)

**NEW** i-PRO  
WV-VCF41P  
4K SENSOR  
PANORAMIC FRONT CAMERA



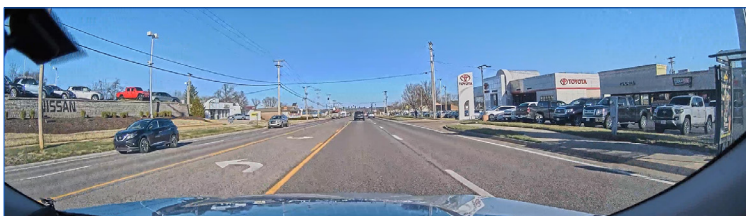
WV-VCF41P PANORAMIC  
FRONT CAMERA

The new i-PRO WV-VCF41P 4K Sensor Panoramic Front Camera harnesses the power of the advanced Ambarella AI vision processor for AI edge applications.

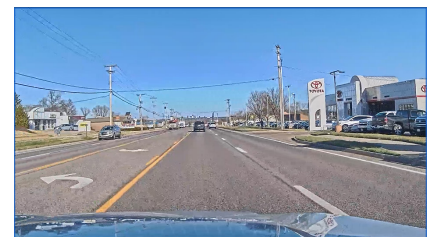
i-PRO reduces your storage requirements by focusing on the view you need in front of the vehicle. This extremely wide panoramic view captures high resolution video evidence that other cameras miss.

KEY FEATURES

- NEW** Panoramic 150° field of view for full windshield coverage
- NEW** 4K image sensor for Ultra HD image quality
- NEW** Enhanced lens and video processing for minimal edge distortion
- NEW** License plate readability maintained within a majority of the horizontal region
- NEW** Single button for Record/Stop with recording light indicator



WV-VCF41P (150° Field of View 32:9)



WV-VC35 (86° Field of View 16:9)

## GENERAL

<b>Model Number:</b>	WV-VCF41P
<b>Resolution:</b>	Main Stream: 3840 x 1080p Bitrate: 14336, 10240, 8192 kbps 2560 x 720p Bitrate: 8192, 6144, 4096 kbps Live Stream: 1280 x 360p Bitrate: 4096, 2048, 1024, 768, 512, 256, 128 kbps 640 x 180p Bitrate: 4096, 2048, 1024, 768, 512, 256, 128 kbps
<b>Pixels:</b>	Approximately 8.4M effective pixels across the entire image sensor before trimming edges
<b>Video CODEC:</b>	H.264 / H.265 Ready
<b>SoC:</b>	Ambarella CV22
<b>Scanning System:</b>	Progressive
<b>Zoom Ratio:</b>	1x Optical; 3x Digital (x1, x1.5, x2, x3)
<b>Focal Length:</b>	3.1mm (1/8 inches)
<b>Aperture:</b>	1:1.8
<b>Aperture Range:</b>	F1.8 Fixed
<b>Focus Range:</b>	1.5m (59 inches) - ∞
<b>Image Sensor:</b>	1/1.8 CMOS Image Sensor
<b>Aspect Ratio:</b>	32:9
<b>Field of View:</b>	Horizontal: 150°   Vertical: 40°
<b>Low-light Capability:</b>	Color: 0.16lx (0.0149 footcandle) (F1.8, AGC:On(High)) Monochrome: 0.12 lx (0.0112 footcandle) (F1.8, AGC: On(High))
<b>Picture Mode:</b>	SuperD, Night, Off
<b>Gain (AGC):</b>	On Low/Mid/High, Off
<b>G-Force Sensor:</b>	Internal Off, On (10 levels)
<b>Auto Adjustments:</b>	Auto White Balance
<b>Focus:</b>	Fixed
<b>Day/Night:</b>	On / Off / Auto
<b>Buttons:</b>	Single Record/Stop
<b>LED Indicators:</b>	Front and Rear to indicate recording (configurable)
<b>Power Source:</b>	PoE (IEEE802.3af compliant) via RJ45 connector
<b>Power Consumption:</b>	PoE DC 48V 180mA/Approx. 8.6W (Class 0 Device)
<b>Operating Environment:</b>	Temperature: -10°C to 50°C, 14°F to 122°F Humidity: 10% to 90% (no condensation)
<b>Weight:</b>	.52 lbs. (235g)
<b>Dimensions:</b>	4.60" (W) x 1.85" (H) x 1.18" (D)
<b>Mounting Bracket:</b>	Visor Plate, pivoting arm included
<b>Compatibility:</b>	WJ-VPU4000, UDE and CloUDE
<b>Laptop Playback Requirements:</b>	CPU: Intel@Core™ i5-7300U CPU @ 2.60GHz or faster. RAM: 16.00GB or more



# NEW i-PRO BWC4000 HOLSTER TRIGGERING SENSOR



i-PRO Americas Inc. introduces the new BWC4000 holster triggering sensor. This new sensor ensures your BWC4000 will start recording instantly when your weapon is removed from your holster to capture every incident video. The BWC4000 holster triggering sensor uses a cryptographic key exchange over a secure Bluetooth channel, making it much more secure and reliable than other beacon technology. Plus, a rechargeable internal battery ensures you will never have to deal with a complicated battery installation, and the holster triggering sensor is automatic, which eliminates the use of buttons and switches.

## GENERAL

<b>Model Number</b>	IPS-BTS-SENSOR
<b>HOLSTER SENSOR SPECIFICATIONS</b>	
<b>Dimensions (L x W x H)</b>	2.35" (L) x 0.85" (W) x 0.57" (H)
<b>Weight</b>	10 Grams
<b>Durability</b>	Waterproof IP67
<b>Operating Temperature</b>	-10°C to +60°C {14°F to + 140°F}
<b>Battery</b>	Internal Rechargeable 62maH
<b>Charging</b>	USB Micro Cable Supplied, Full Charge in 8 Hours
<b>Mounting</b>	3M VHB Tape w/3M Activator
<b>Indicators</b>	LED: Charging - Red, Fully Charged - Green
<b>Warranty</b>	1 Year

## COMPATIBLE WITH

- WV-BWC4000: i-PRO Body-Worn Camera
- Firearms and Conductive Energy Weapons (CEWs)

## KEY FEATURES

Holster trigger can instantly start BWC4000 recording

Simple installation and operation to existing lethal weapon holsters

Rechargeable battery lasts up to four weeks without interruption and only needs charging every three weeks

Simple one-time Bluetooth pairing process

BWC automatically re-pairs with sensors when in range



Sensor installed on holster



# CLOUD-HOSTED MANAGEMENT FOR YOUR DIGITAL EVIDENCE

## **i-PRO Americas Inc. introduces CloUDE powered by Genetec!**

i-PRO, a global leader in advanced sensing technologies, and Genetec, the leader in video management, have come together to provide an open platform solution that offers you the choice between on-premises or cloud-hosted management for your digital evidence. i-PRO's CloUDE powered by Genetec is a digital evidence management system that facilitates collaboration between agencies, corporate departments, lawyers and the public. Grant immediate access to evidence and ensure that the information is only shared with authorized individuals.

Compatible with i-PRO's BWC MK3, BWC4000, Arbitrator360-HD, and ICV4000, i-PRO's CloUDE powered by Genetec gives you the ability to choose based on your needs and budgets, and you retain complete ownership of all your evidence and metadata.

## KEY FEATURES

---

Centralize Digital Files in One App

---

Built-in Video Redaction

---

Video Conversion and Review

---

Upload Files from the Public

---

Maintain Chain of Evidence

---

Video Request Workflows

---

Powered by  
**Genetec**



# ON PREMISE

## ON-PREMISE MANAGEMENT FOR YOUR DIGITAL EVIDENCE

i-PRO now offers you the choice between on-premise or cloud-hosted management for your digital evidence. i-PRO's UDE On Premise allows you to manage and store all of your digital evidence data at your facility. You choose the hardware and installation setup that fits your needs. All evidence files are encrypted and hashed, ensuring their security and integrity from capture to court to archiving. With i-PRO's UDE On Premise, you are in control of your data security policies, and you can access the information without logging in to an external cloud-hosted or storage environment.

i-PRO gives you the ability to deploy the best digital evidence management system based on your specific needs and budget, and you retain complete ownership of all your evidence and metadata.



i-PRO Americas Inc.

**FOR TECHNICAL SUPPORT**

support.h@i-pro.com  
1.800.513.5417  
M-F 7:00am – 7:00pm CST

**FOR MORE INFORMATION,  
CONTACT US**

[i-pro.com/us/en/publicsafety](https://i-pro.com/us/en/publicsafety)  
[i-PROPublicSafety@i-pro.com](mailto:i-PROPublicSafety@i-pro.com)  
1.877.803.8492