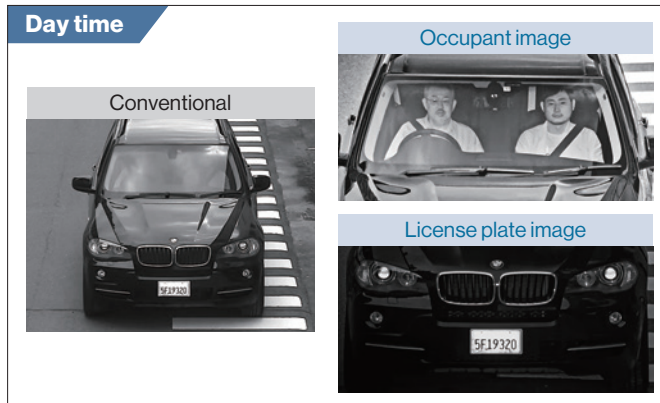


Occupant image and license plate simultaneously in 24/7.

The WV-X5550LTPJ captures clear images of occupants on one channel and license plates on the other, even in the most challenging environments. It help reduce investigation time, as law enforcement can recognize the license plate of suspected vehicles and details inside the vehicle.



Key Features

“Dual source” capturing function - Simultaneously capturing

- **Simultaneously capturing**

Enables to capture occupant and license plate images simultaneously by controlling of IR light power even if it will be in night time.

Capture clear image

- **Polarized Filter (PLF)**

To cut through reflections to capture occupant even with curved windshield.

- **Band-Pass Filter (BPF)**

Even in intense headlights, the flare is suppressed and occupant can be captured clearly even night time.

- **Switchable Optical Filter**

By switching between two types of optical filters (PLF / BPF), occupants can be captured in 24 / 7.

- **Powerful IR illuminator**

Despite being a high power IR floodlight with 78 LED light arrays, it complies with eye safety standards and captures occupants 24/7.

High Reliability

- Temperature: -40 °C to +60 °C {-40 °F to +140 °F}
- Humidity: 10 % to 100 %
- Water Resistance: IP66 (IEC 60529), Type 4X(UL50E), NEMA 4X
- Shock resistance: IK10 (IEC 62262)

Usability

- **Easy installation**

Easy hanging and easy Pan/Tilt adjustment structure

- **Easy setting**

Confirming live image and adjusting the viewing angle with mobile device via Wi-Fi connection.

ZOOM & FOCUS position and PLF rotation angle are automatically set by input horizontal & vertical distance between vehicle and camera.



Specifications

Camera	Image Sensor	2/3 type CMOS image sensor
	Minimum Illumination	BW : 0 lx
	Intelligent Auto	On / Off
	Multi-sampling Dynamic Range *1	120 dB typ.
	Maximum shutter	[15fps/30fps mode] Max. 1/10000 s to Max. 1/30 s [12.5fps/25fps mode] Max. 1/10000 s to Max. 1/25 s
	Auto contrast adjust	On / Off
	Adaptive black stretch	The level can be set in the range of 0 to 255.
	Back light compensation (BLC) / High light compensation (HLC)	BLC / HLC / Off, The level can be set in the range of 0 to 31. (only when Intelligent auto: Off)
	Maximum gain	The level can be set in the range of 0 to 11.
	Day/Night *2	Auto / Day / Night * The level can be set in the range of 0 to 9.
	IR LED Light	On / Off
	Digital noise reduction	The level can be set in the range of 0 to 255.
	Lens	Optical zoom
Focal length		51 mm – 85 mm [2-9/16 inches – 3-11/32 inches]
Maximum Aperture Ratio		1:1.6
Focus range		25 m ± 5 m
Angular Field of view		[4 : 3 mode] Horizontal : 5.5° (TELE) – 9.2° (WIDE) Vertical : 4.4° (TELE) – 7.3° (WIDE)
Adjusting angle	Horizontal: ± 17° (can be adjusted with the installation angle of the TILT bracket)	
	Vertical: -10° to +10°, Yaw: none	
Network	Network IF	10Base-T / 100Base-TX, RJ45 connector
	Resolution	•H.265 / H.264 Dual sources [4:3] (15fps mode) Dual sources [4:3] (12.5fps mode) Single source [4:3] (30fps mode) Single source [4:3] (25fps mode) 2560×1920, 1600×1200, 1280×960, 640×480
	H.265 / H.264 *3	•JPEG (MJPEG) 1280×960, 640×480
	Transmission Mode	VBR / Frame rate
	Transmission Type	Unicast port (AUTO) / Unicast port (MANUAL) / Multicast

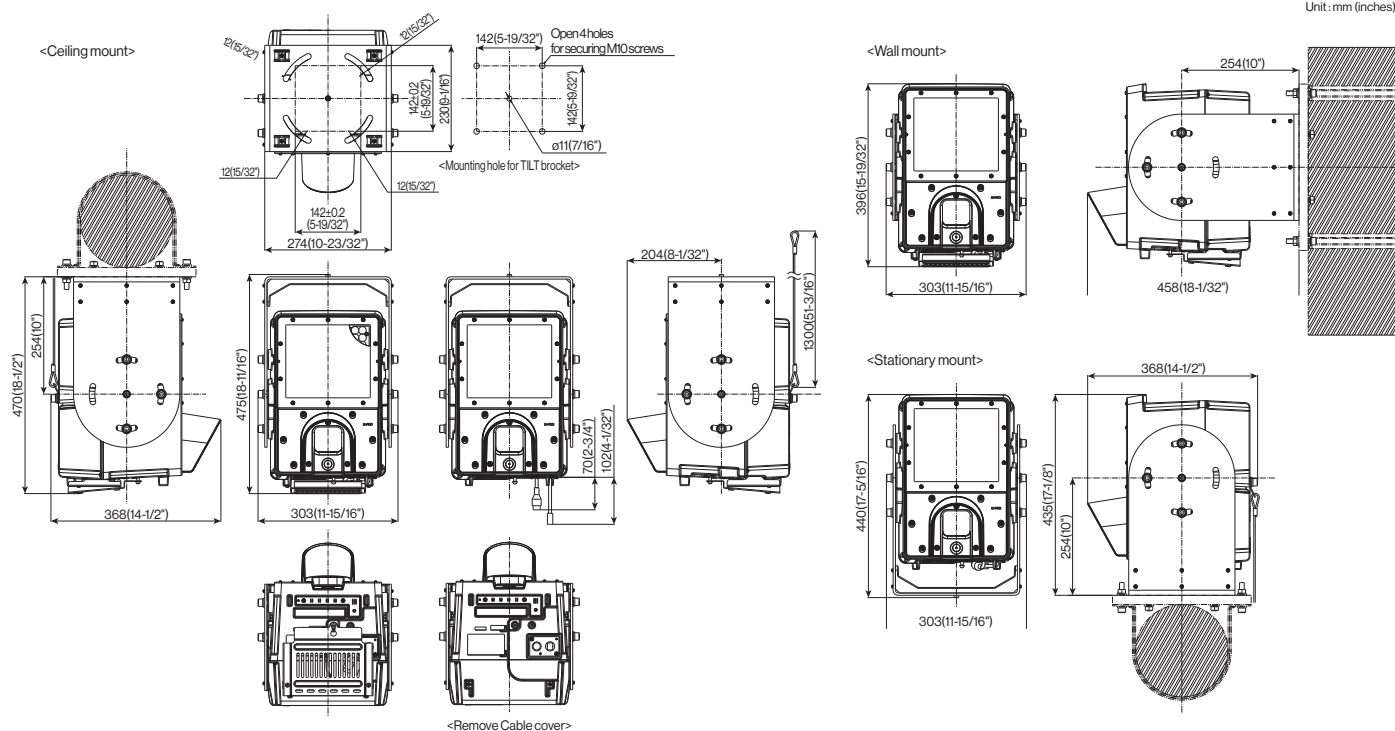
*1 Two types of images, the interior image (source 1) and the license plate image (source 2), are output simultaneously from this unit. This spec is the maximum exposure ratio of Source 1 and Source 2.

*2 The output from the camera is a black and white signal. Use a polarizing filter when using day mode and use a bandpass filter when using night mode.

Network	Supported Protocol	IPv6: TCP/IP, UDP/IP, HTTP, HTTPS, DNS, NTP, DHCPv6, RTP, MLD, ICMP, ARP IPv4: TCP/IP, UDP/IP, HTTP, HTTPS, RTSP, RTP, RTP/RTCP, DHCP, DNS, NTP, IGMP, ICMP, ARP	
	Maximum concurrent access number	14 (Number of sessions that can connect to cameras at the same time) *Depends on network conditions	
	Mobile Terminal Compatibility	iPad / iPhone, Android™ terminals	
	ONVIF Profile	S	
General	Safety	UL (UL62368-1), c-UL (CAN/CSA C22.2 NO.62368-1), CE (EN62368-1)	
	EMC	FCC (Part15 ClassA), ICES003 ClassA, EN55032 ClassA, EN55024	
	Power Source and Power Consumption	AC24 V 3.8 A, Approx. 68 W	
	Ambient Operating Temperature	-40 °C to +60 °C (-40 °F to +140 °F) (Power On range: -20 °C to +60 °C (-4 °F to +140 °F))	
	Ambient Operating Humidity	10 to 100 % (no condensation)	
	Water and Dust Resistance	IP66 (IEC60529), Type 4X (UL50E), NEMA 4X compliant	
	Shock Resistance	IK10 (IEC62262) (Except for front panels)	
	Wind Resistance	Up to 40 m/s (approx. 89 mph)	
	Dimensions	Ceiling mount:	303 mm (11-15/16 inches) (W) 452 mm (17-25/32 inches) (H) 368 mm (14-1/2 inches) (D)
		Wall mount:	303 mm (11-15/16 inches) (W) 388 mm (15-9/32 inches) (H) 458 mm (18-1/32 inches) (D)
		Stationary mount:	303 mm (11-15/16 inches) (W) 435 mm (17-1/8 inches) (H) 368 mm (14-1/2 inches) (D)
Mass (approx.)	Main body : Approx. 11.5 kg (25.39 lbs) With TILT bracket : Approx. 16.0 kg (35.32 lbs)		
Finish	Main body : Aluminum die cast, Silver Glass and Polycarbonate resin, Clear Outer fixing screws: Stainless steel (Corrosion-resistant treatment) TILT bracket : Aluminum plate and Aluminum die cast, Silver		

*3 Transmission for 2ch-2streams can be individually set.

Appearance



Trademarks and registered trademarks

- iPad and iPhone are trademarks of Apple Inc., registered in the U.S. and other countries.
- Android is a trademark of Google LLC.
- All other trademarks identified herein are the property of their respective owners.

Important

- Safety Precautions : Carefully read the Basic Information, Installation Guide and Operating Instructions before using this product.
- i-PRO Co., Ltd. cannot be held responsible for the performance of the network and/or other manufacturers' products used on the network.

• Masses and dimensions are approximate. • Specifications are subject to change without notice.