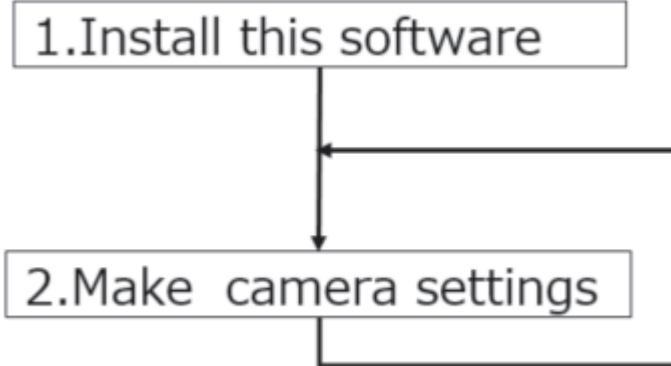


i-PRO Configuration Tool for Milestone

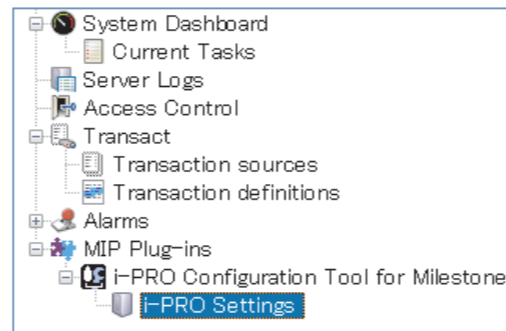
Operation Overview



2. Make camera settings

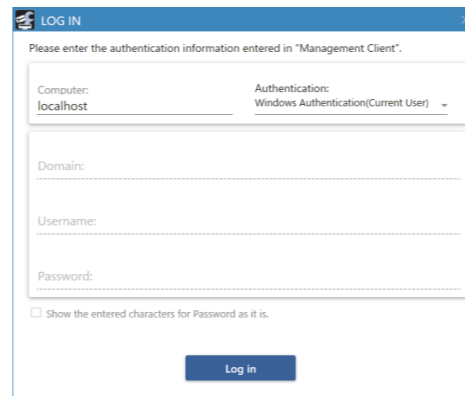
2.1 Start up this software and enter the authentication information entered in "Management Client" to log in

To click the "i-PRO Settings" icon in [Management Client]-[Site Navigation]-[MIP Plugin]-[i-PRO Configuration Tool for Milestone]-[i-PRO Settings] screen.



Enter the Login information of Management Client.

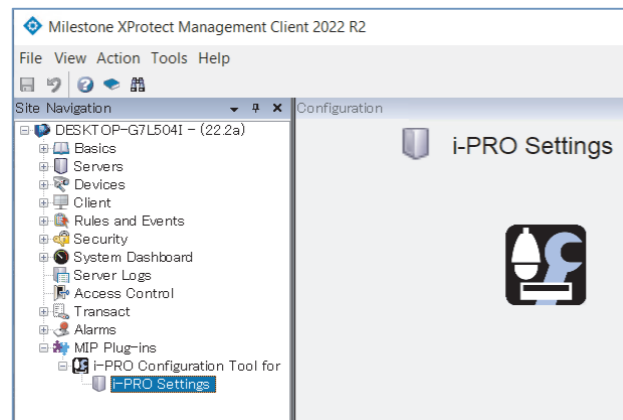
- Computer address
- Authentication type
- Domain
- Credentials (Username & Password)



1. Install this software

1.1 Extract the "iCTforMilestoneSetup" zip package file.

1.2 Double-click the "iCTforMilestoneSetup.exe" from Extracted zip file to register the "i-PRO Settings" icon in [Management Client]-[Site Navigation]-[MIP Plugin]-[i-PRO Configuration Tool for Milestone]-[i-PRO Settings] screen.



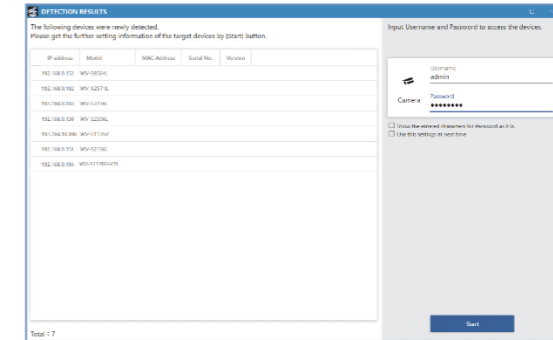
(*1)The following cameras are supported.

- WV-S1136, WV-S1536L, WV-S1536LTN, WV-S2136L, WV-S2236L, WV-S2536L, WV-S2536LT, WV-S2136
- WV-X1551LN, WV-X1571LN, WV-X2251L, WV-X2271L, WV-X2551LN, WV-X2571LN,
- WV-WV-S8543(L), WV-S8544(L), WV-S8563L, WV-S8564L, WV-S8573L, WV-S8574L, WV-X86531-Z2, WV-X86530-Z2
- WV-S65302-Z2, WV-S65301-Z1, WV-S65300-ZY, WV-S61301-Z1, WV-S61300-ZY, WV-S65501-Z1, WV-S61501-Z1
- WV-U61300-ZY, WV-U61301-Z1, WV-U65300-ZY, WV-U65301-Z1, WV-U65302-Z2, WV-S85702-F3L, WV-S85402-V2L, WV-U85402-V2L
- WV-U1130A, WV-U1132A, WV-U1142A, WV-U1532LA, WV-U1542LA, WV-U2130LA, WV-U2132LA, WV-U2140LA, WV-U2142LA
- WV-U2530LA, WV-U2532LA, WV-U2540LA, WV-U2542LA, WV-U11300-V2, WV-U21300-V2L
- WV-S4156, WV-S4176, WV-S4556L(M), WV-S4576L(M), WV-S71300-F3

[Note] Please use the latest version of the camera firmware.

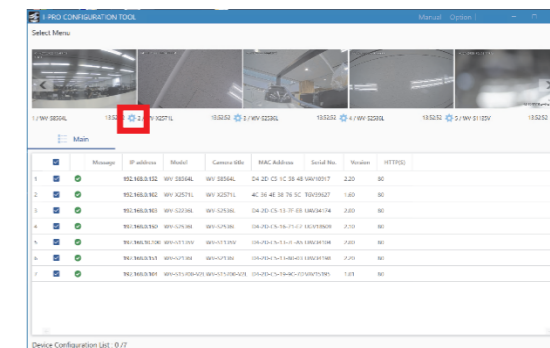
2.2 Get camera list

To connect to the camera, you need to enter "Username" and "Password" of the cameras.



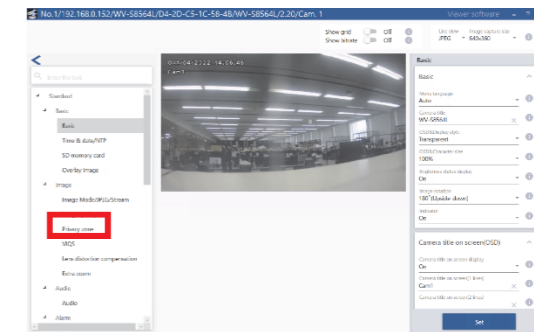
2.3 Make camera and/or Extension Software (*2) settings

Click the "Gear" icon at the bottom of the thumbnail of target camera to start the settings.



"Gear" icon

Please refer to (*1) for the camera to be set.



Please make the settings on the camera advanced setting screen.

(*2) Before using this function, it is necessary to install the Extension Software. It can be installed on multiple cameras at the same time by using the "i-PRO

failure or malfunction, or any and all other commercial damages or losses), even if such Contributor has been advised of the possibility of such damages.

9. Accepting Warranty or Additional Liability. While redistributing the Work or Derivative Works thereof, You may choose to offer, and charge a fee for, acceptance of support, warranty, indemnity, or other liability obligations and/or rights consistent with this License. However, in accepting such obligations, You may act only on Your own behalf and on Your sole responsibility, not on behalf of any other Contributor, and only if You agree to indemnify, defend, and hold each Contributor harmless for any liability incurred by, or claims asserted against, such Contributor by reason of your accepting any such warranty or additional liability.

END OF TERMS AND CONDITIONS

APPENDIX: How to apply the Apache License to your work.

To apply the Apache License to your work, attach the following boilerplate notice, with the fields enclosed by brackets "{}" replaced with your own identifying information. (Don't include the brackets!) The text should be enclosed in the appropriate comment syntax for the file format. We also recommend that a file or class name and description of purpose be included on the same "printed page" as the copyright notice for easier identification within third-party archives.

Copyright 2019 Thomas Levesque Licensed under the Apache License, Version 2.0 (the "License"); you may not use this file except in compliance with the License. You may obtain a copy of the License at

<http://www.apache.org/licenses/LICENSE-2.0>

Unless required by applicable law or agreed to in writing, software distributed under the License is distributed on an "AS IS" BASIS, WITHOUT WARRANTIES OR CONDITIONS OF ANY KIND, either express or implied. See the License for the specific language governing permissions and limitations under the License.

License Agreement

For Open Source Computer Vision Library

(3-clause BSD License)

Copyright (C) 2000-2020, Intel Corporation, all rights reserved.

Copyright (C) 2009-2011, Willow Garage Inc., all rights reserved.

Copyright (C) 2009-2016, NVIDIA Corporation, all rights reserved.

Copyright (C) 2010-2013, Advanced Micro Devices, Inc., all rights reserved.

Copyright (C) 2015-2016, OpenCV Foundation, all rights reserved.

Copyright (C) 2015-2016, Itseez Inc., all rights reserved.

Copyright (C) 2019-2020, Xperience AI, all rights reserved.

Third party copyrights are property of their respective owners.

Redistribution and use in source and binary forms, with or without modification, are permitted provided that the following conditions are met:

- * Redistributions of source code must retain the above copyright notice, this list of conditions and the following disclaimer.
- * Redistributions in binary form must reproduce the above copyright notice, this list of conditions and the following disclaimer in the documentation and/or other materials provided with the distribution.
- * Neither the names of the copyright holders nor the names of the contributors may be used to endorse or promote products derived from this software without specific prior written permission.

This software is provided by the copyright holders and contributors "as is" and any express or implied warranties, including, but not limited to, the implied warranties of merchantability and fitness for a particular purpose are disclaimed.

In no event shall copyright holders or contributors be liable for any direct, indirect, incidental, special, exemplary, or consequential damages (including, but not limited to, procurement of substitute goods or services; loss of use, data, or profits; or business interruption) however caused and on any theory of liability, whether in contract, strict liability, or tort (including negligence or otherwise) arising in any way out of the use of this software, even if advised of the possibility of such damage.

Network Security

As you will use this product connected to a network, your attention is called to the following security risks.

- (1) Leakage or theft of information through this product
- (2) Use of this product for illegal operations by persons with malicious intent
- (3) Interference with or stoppage of this product by persons with malicious intent

It is your responsibility to take precautions such as those described below to protect yourself against the above network security risks.

- Use this product in a network secured by a firewall, etc.
- If this product is connected to a network that includes PCs, make sure that the system is not infected by computer viruses or other malicious entities (using a regularly upgraded anti-virus program, anti-spyware program, etc.).
- Protect your network against unauthorized access by restricting users to those who log in with an authorized user name and password.
- Apply measures such as user authentication to protect your network against leakage or theft of information, including image data, authentication information (user names and passwords), alarm mail information, FTP server information.

About "Grid Display" function

The grid display function is for viewing angle adjustment for some extension software.

Appropriate object size is published on our website<Control No.: C0320>.



<https://i-pro.com/global/en/surveillance/training-support/support/technical-information>

Note: In case of using in Japan, please refer the following.

https://i-pro.com/jp/ja/support_portal/technical_information

i-PRO Co., Ltd.

<https://www.i-pro.com/>

© i-PRO Co., Ltd. 2023

av1008-74/M