

**How to Upgrade WV-ASM200**  
from Ver.4.00 or older to Ver4.10 or later  
on Windows 7 & Vista

Ver. 1.10  
Feb. 18, 2016

Security Systems Business Division  
Panasonic System Networks

## History

Ver.	Date	Updates	Note
1.0	2015/10/29	First release	
1.1	2016/02/18	Add "7.Exceptional setting of Windows Firewall", "Service" list windows comments" Correct some missed words.	P.20,21 P.15

## ■ Important notice

If you update the ASM200 to Ver.4.10 or later which has been worked on Windows 7 or Vista, you have to update SQL Server #1 also. In this case, you have to follow the right process to complete the update. Please be sure to follow this procedure.



#1: Microsoft Corporation has stopped supporting SQL Server® 2005, so ASM200 have to switch to use SQL Server® 2012.

- \* If you newly install ASM200, use the SQL Server® 2012 bundled with ASM200.
- \* If you have used ASM200 on Windows 8 or later OS, SQL Server®2012 has already been installed, so you do not need to follow this procedure.
- \* Even after uninstalled SQL Server & ASM200, the activation key for ASM200 still remain in the PC. (Extension software's one, also remain)

## ■ Procedure

Be sure to follow the steps. Or you may face a trouble at SQL2012 installation (step 4).

### Order of this procedure<sup>(\*1)</sup>

1. Save the current setup data as backup file  
(See page 127 in the Setup Instructions of WV-ASM200)
2. Uninstall ASM200 of current version  
(See page 17 in the Setup Instructions of WV-ASM200)
3. Uninstall SQL server 2005<sup>(\*2)</sup>  
(See page 18-19 in the Setup Instructions of WV-ASM200)
4. Install SQL server 2012 (new)<sup>(\*2)</sup>  
(See Step 2 on page 16 in the Setup Instructions of WV-ASM200)
5. Install ASM200 ver. 4.10 or later.  
(See Step 3 on page 16 in the Setup Instructions of WV-ASM200)
6. Load the saved setup data to ASM200(new)  
(See page 128 in the Setup Instructions of WV-ASM200)

\*1 : Please follow the order 1=>2=> 3=>4=> 5=>6.  
When you miss the order, you cannot uninstall ASM200.

\*2 : When Windows 7 or Windows Vista is installed into the PC at a site,  
you need to uninstall SQL server 2005 and install SQL server 2012.

1. Save the setup data

# 1. Save the current setup data

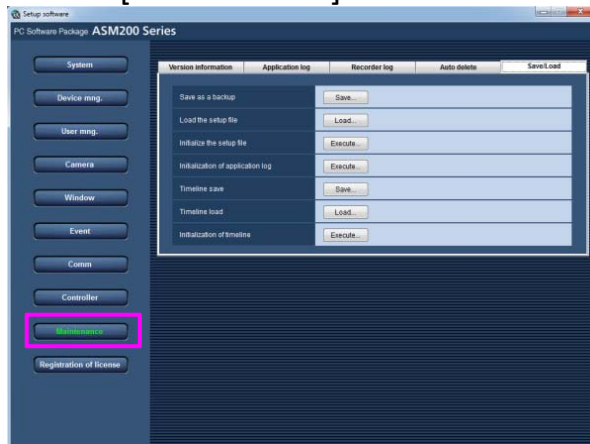


## Important:

When this software is uninstalled, the setup data of this software will be deleted. When the setup data is necessary, save the setup data before uninstalling this software

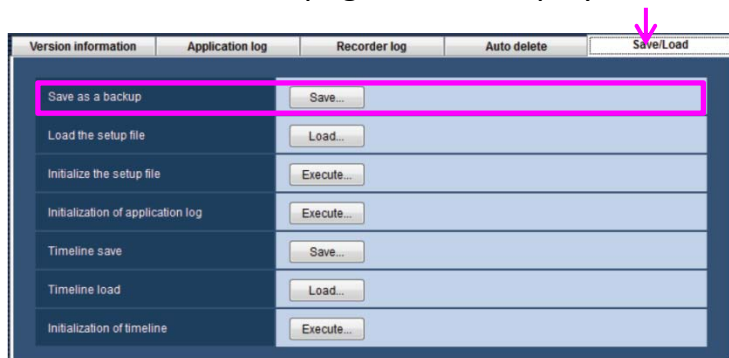
### Step 1

Click the [Maintenance] button.



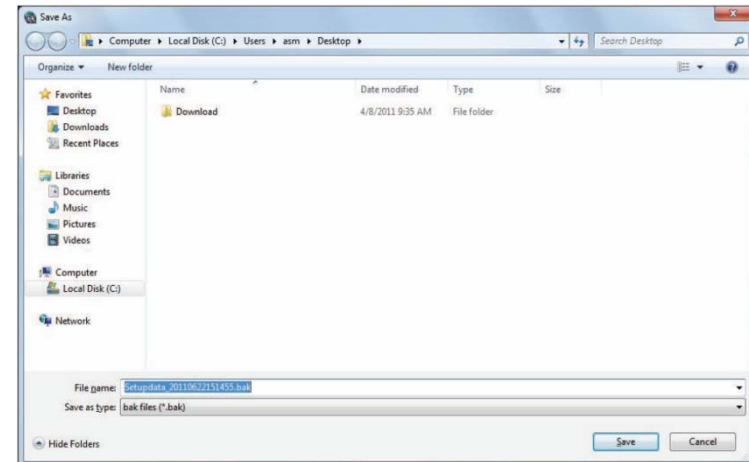
### Step 2

Click the [Save/Load] tab.  
-> The "Save/Load" page will be displayed.



### Step 3

Click the [Save...] button of "Save as a backup".  
-> The "Save As" window will be displayed.



### Step 4

Click the [Save] button after designating the destination folder.  
-> Saving of the setup data will start.

### Step 5

Click the [OK] button on the confirmation window.  
-> The "Save/Load" page will be displayed again.

## 2. Uninstall ASM200 of current version

## 2. Uninstall ASM200 of current version



### Important:

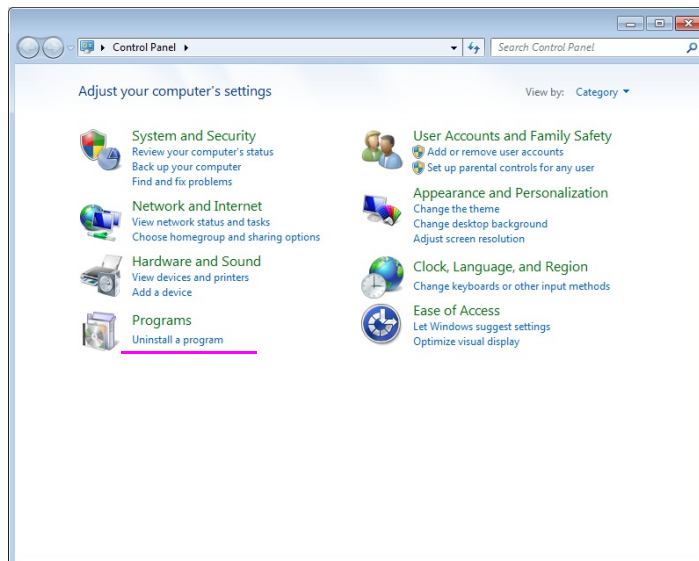
If a message window is displayed to ask you to exit other applications when uninstalling the software, click the [Cancel] button to cancel the uninstallation. Uninstall the software again after stopping the respective services. Refer to the manuals of the operating system in use for how to stop the services.

If using timeline, before uninstalling this software from the master PC, disconnect the PC from the network so that the PC will not be accessed from slave PCs. If uninstalling is performed with being accessed from the slave PCs, the database deletion may be failed.

If this happened, reinstall the software and try uninstallation again.

### Step 1

Open "Uninstall a program" or "Programs and Features" in "Control Panel".



### Step 2

Select "WV-ASM200 Series" from the presently installed programs and click the [Uninstall] button. The uninstall program will be launched and the wizard will be displayed.

### Step 3

Uninstall the software by following the instructions displayed on the monitor.



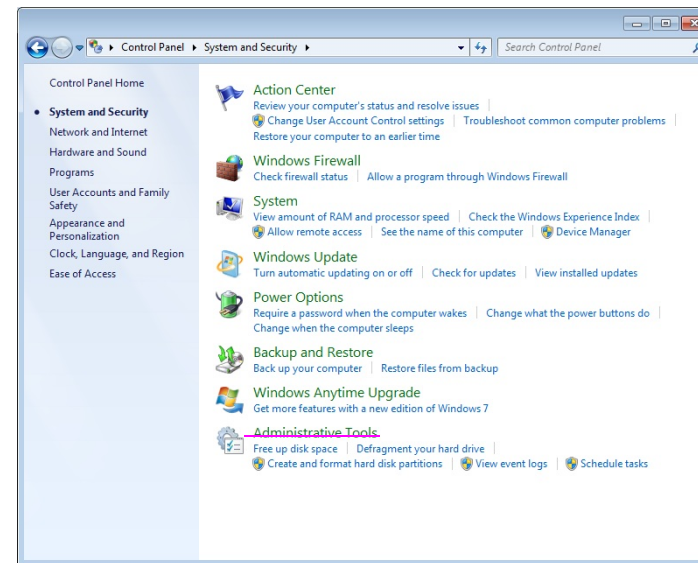
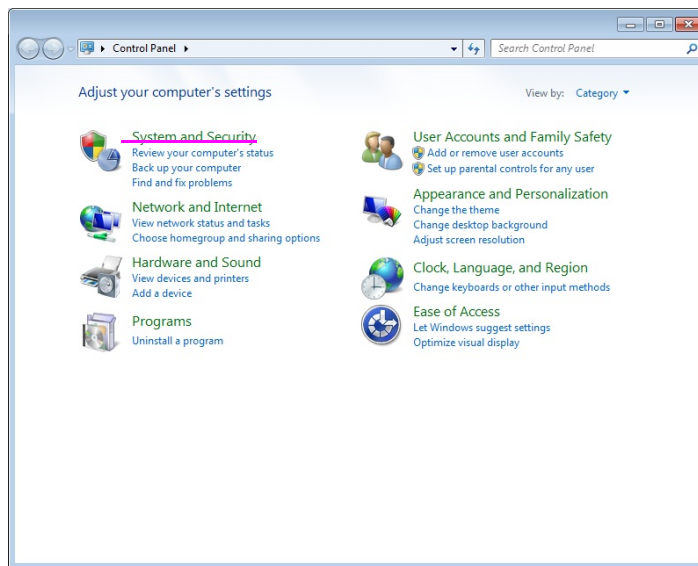
## 3. Uninstall SQL Server 2005 Express

# 3. Uninstall SQL Server 2005 Express (1/4)

## Step 1

Open "System and Security" in "Control Panel".

-> The "System and Security" window will be displayed.

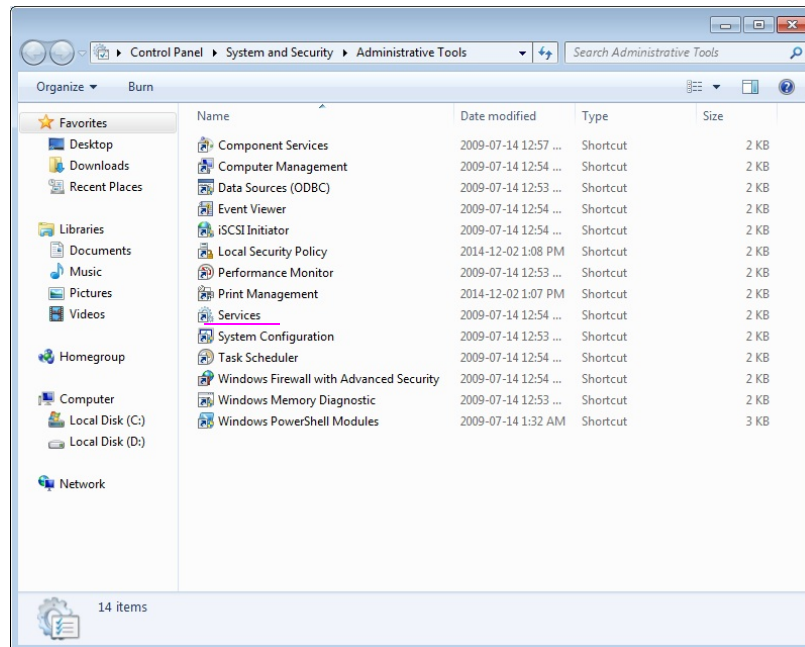


# 3. Uninstall SQL Server 2005 Express (2/4)



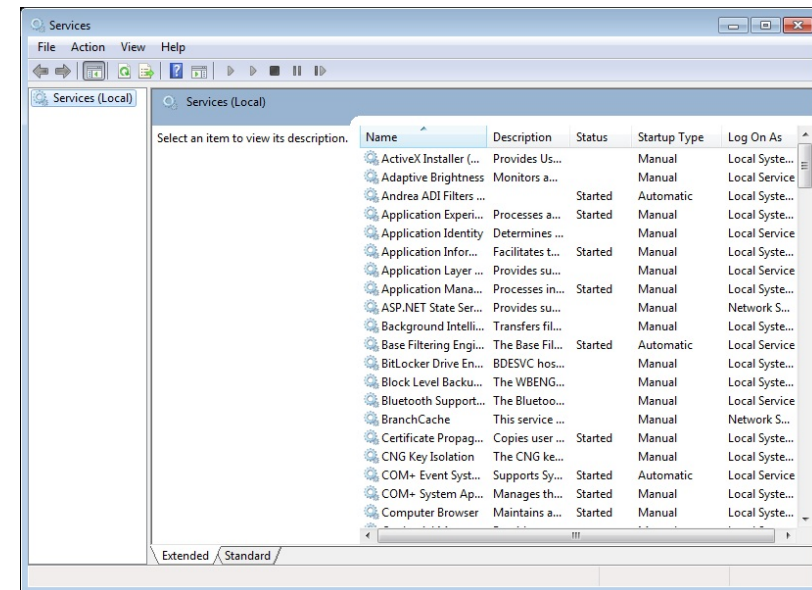
## Step 2

Click [Administrative Tools].  
-> The "Administrative Tools" window will be displayed.



## Step 3

Double-click [Services].  
-> The "Services" list window will be displayed.



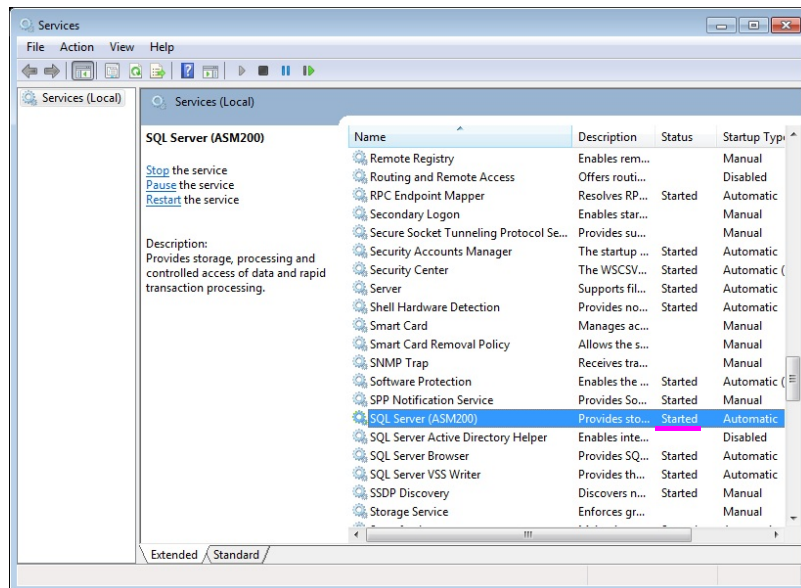
\* Scroll down, and find [SQL Server (ASM200)]

# 3. Uninstall SQL Server 2005 Express (3/4)



## Step 4

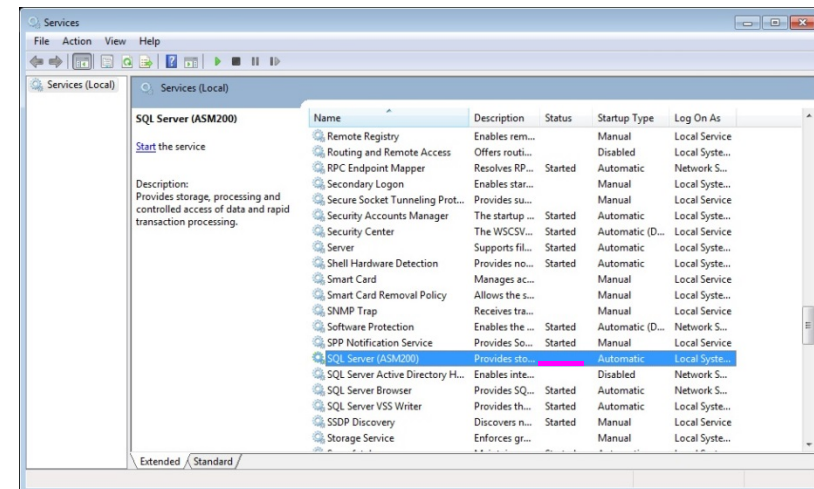
Click [SQL Server (ASM200)] in the service list.



## Step 5

Click [Stop] of the "Stop the service" or select [Stop] from the right-click menu.

-> The "SQL Server (ASM200)" service will be stopped.



\* Status changed from "Started" to blank

# 3. Uninstall SQL Server 2005 Express (4/4)

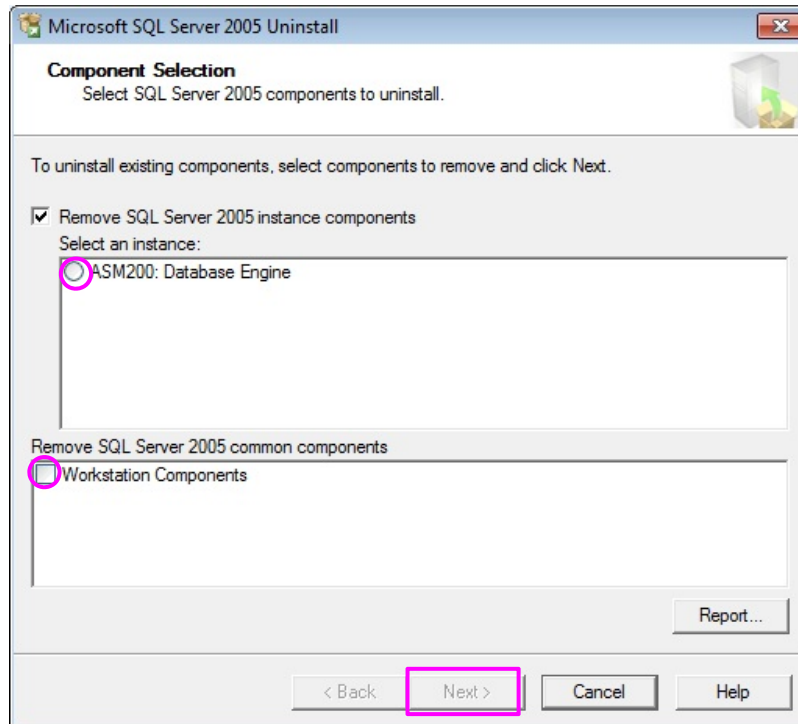
## 3. Uninstall SQL Server 2005 Express (4/4)

### Step 6

Open "Uninstall a program" or "Programs and Features" in "Control Panel".

### Step 7

Select "Microsoft SQL Server 2005" from the presently installed programs and click the [Uninstall] button.  
-> The uninstall program will be launched and the wizard will be displayed.



### Step 8

Check the "ASM200: Database Engine" and "Workstation Components", and uninstall them following the instructions in the window.

### Step 9

Also, uninstall "Microsoft SQL Server Native Client".

### Step 10

At the end, uninstall "Microsoft SQL Server VSS Writer" and "Microsoft SQL Server Setup Support Files(English)".

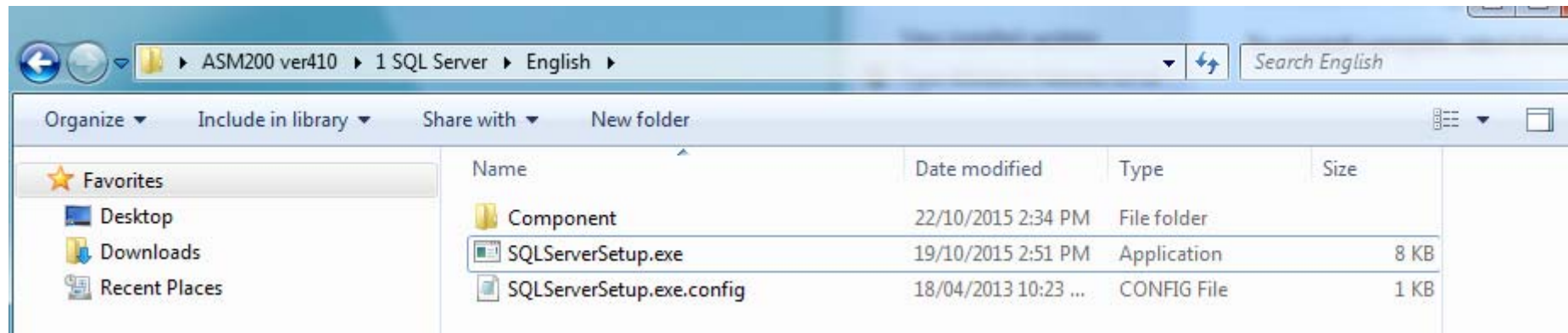
## 4. Install SQL server 2012

# 4. Install SQL server 2012 (new)

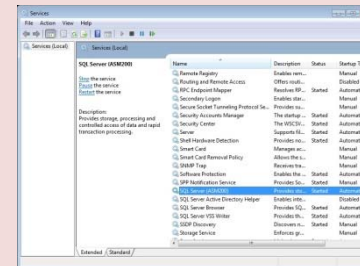


## Step 1

Double-click "SQLServerSetup.exe" in the folder "1 SQLServer".  
The installer of "MicrosoftR SQL ServerR 2012 Service Pack 1 (SP1) Express" will be launched.  
Install the software by following the instructions displayed on the monitor.



\* If you opened "Services" list window at this time, SQL Server 2012 installation stops.  
Close "Services" list window, then click RETRY.



5. Install WV-ASM200 Ver.4.10 or later

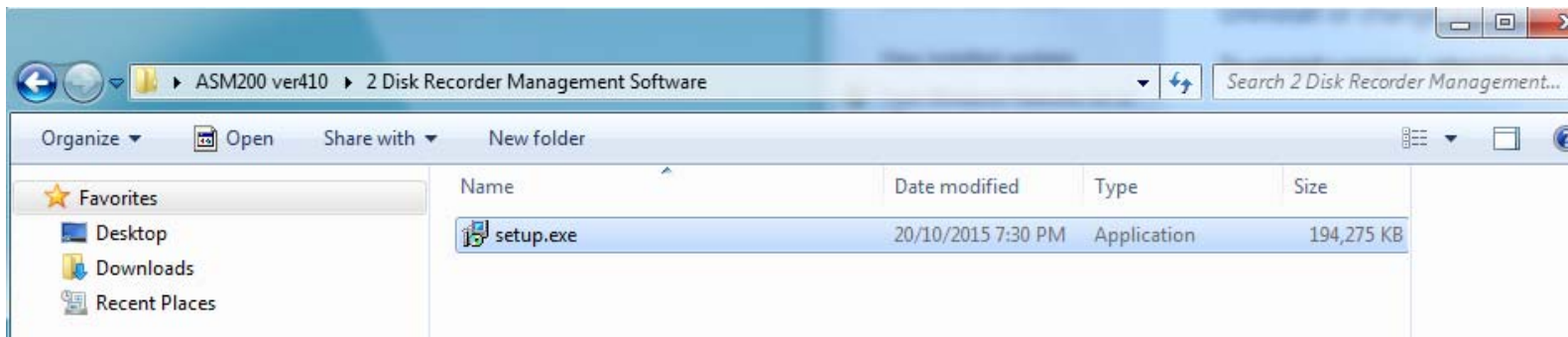


## 5. Install WV-ASM200 Ver.4.10 or later (new)



### Step 1

Double-click "setup.exe" in the folder "2 Disk Recorder Management Software".  
The installer of "Disk Recorder Management Software" will be launched.  
Install the software by following the instructions displayed on the monitor.  
When installed with the ALL option, the executable files, etc. will be copied on a newly created folder "C:\Program Files\Panasonic\ASM200".



### Step 2

Reboot the PC.

After completing step 1 - 5, reboot the PC to complete the installation.

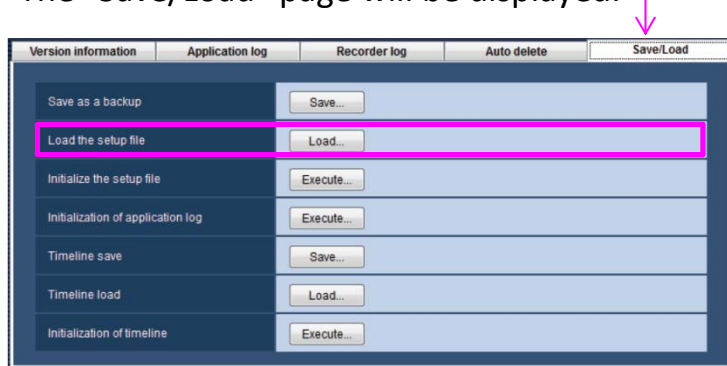
6. Load the saved setup data

# 6. Load the saved setup data

## 6. Load the setup data

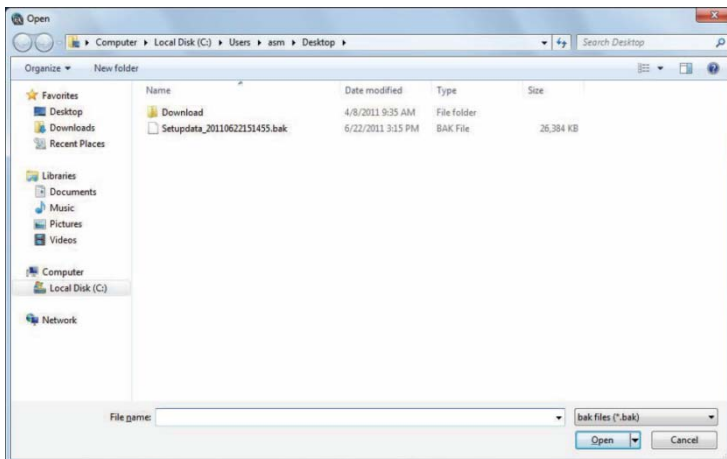
### Step 1

Click the [Maintenance] button, the [Save/Load] tab.  
-> The "Save/Load" page will be displayed.



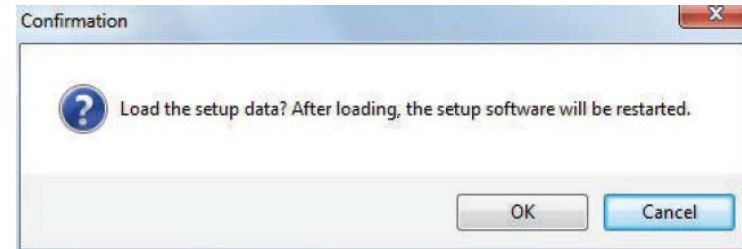
### Step 2

Click the [Load...] button of "Load the setup file".  
-> The "Open" window will be displayed.



### Step 3

Select the setup file to be loaded, and then click the [Open] button.  
-> The loading start confirmation window will be displayed.



### Step 4

Click the [OK] button on the confirmation window.  
-> Loading of the setup file will start.

### Step 5

When the loading completion window is displayed, click the [OK] button.  
-> The setup software will be restarted and the login window will be displayed.

## Exceptional settings of Windows Firewall

## Exceptional settings of Windows Firewall

You might need to configure the exceptional settings of Windows Firewall as follows depends on your PC.

To enable SQL2012, please add again the following two files for setting up a firewall.

[sqlservr.exe](#)

[sqlbrowser.exe](#)

Please make sure if the following files are in the list.

asm200live.exe	*
asm200liveIP.exe	*
asm200srv.exe	*
asm200tlsrv.exe	
sqlserver.exe	* (SQL Server Windows NT)
sqlbrowser.exe	* (SQL Browser Service EXE
File and Printer Sharing	

You can find the files at;

### - For 32-bit OS (Operating System);

[sqlservr.exe](#) C:\Program Files\Microsoft SQL Server\MSSQL11.ASM200\MSSQL\Binn

[sqlbrowser.exe](#) C:\Program Files\Microsoft SQL Server\90\Shared

### - For 64-bit OS;

[sqlservr.exe](#) C:\Program Files (x86)\Microsoft SQL Server\MSSQL11.ASM200\MSSQL\Binn

[sqlbrowser.exe](#) C:\Program Files (x86)\Microsoft SQL Server\90\Shared

For more details about setting up a firewall, please refer to the “Exceptional settings of Windows Firewall” on [page 136](#) in the Setup Instructions of WV-ASM200. <sup>#1</sup>

# Reference manual for upgrading SQL (2005 =>2012)

At times like this  
--- Trouble shooting for upgrading SQL server ---

# Trouble shooting for upgrading SQL server (1/5)

You might face to see the right screen message even after you installed SQL Server 2012.



In this case, please try followings.

\* Old version SQL server information(instance) remained,  
then SQL Server 2012 cannot work.

(CASE-1)

Missed to uninstall SQL Server 2005 before uninstalling ASM200.

(CASE-2)

Installed SQL Server2012 without uninstalling SQL Server 2005. (ASM200 was uninstalled)

(CASE-3)

Service could not “start” even after installing SQL Server 2012.

# Trouble shooting for upgrading SQL server (2/5)

## (CASE-1)

Missed to uninstall SQL Server 2005 before uninstalling ASM200.

Step 1

Re-install SQL server 2005.

\* Download the previous version ASM200 from the URL below.

[http://security.panasonic.com/pss/cgi-bin/security/ipro/download/tbookmarka\\_m.cgi?m=%20&mm=2011092010341404](http://security.panasonic.com/pss/cgi-bin/security/ipro/download/tbookmarka_m.cgi?m=%20&mm=2011092010341404)

and Click "Click here to view the previous version. "

Step 2

Re-install the previous version ASM200.

Step 3

Uninstall the previous version ASM200.

Step 4

Uninstall SQL server 2005.

Step 5

Install SQL server 2012.

\* If you can find "SQL Server(ASM200)" in Services(LOCAL), the installation is succeeded..

Refer "3. Uninstall SQL Server 2005 Express" STEP-1 to STEP-4 to find the service.

Step 6

Install ASM200 ver.4.10 or newer.

Step 7

Load the saved setup data.



# Trouble shooting for upgrading SQL server (3/5)

(CASE-2)

Installed SQL Server2012 without uninstalling SQL Server 2005.  
(ASM200 was uninstalled)

Step 1 Uninstall SQL server 2012.

Step 2 Re-install the previous version ASM200.

\* Download the previous version ASM200 from the URL below.

[http://security.panasonic.com/pss/cgi-bin/security/ipro/download/tbookmarka\\_m.cgi?m=%20&mm=2011092010341404](http://security.panasonic.com/pss/cgi-bin/security/ipro/download/tbookmarka_m.cgi?m=%20&mm=2011092010341404)

and Click "Click here to view the previous version. ".

\* Even if you face some error message during the installation, ignore it and keep going.

Step 3 Uninstall the previous version ASM200.

Step 4 Uninstall SQL server 2005.

Step 5 Install SQL server 2012.

\* If you can find "SQL Server(ASM200)" in Services(LOCAL), the installation is succeeded..

Refer "3. Uninstall SQL Server 2005 Express" STEP-1 to STEP-4 to find the service.

Step 6 Install ASM200 ver.4.10 or newer.

Step 7 Load the saved setup data.

# Trouble shooting for upgrading SQL server (4/5)

(CASE-3)

Service could not “start” even after installing SQL Server 2012.

Step 1 Uninstall SQL server 2012.

Step 2 If you can find some SQL related files, services, uninstall or disable them.

Step 3 Install SQL server 2012.

\* If you can find “SQL Server(ASM200)” in Services(LOCAL), the installation is succeeded..  
Refer “[3. Uninstall SQL Server 2005 Express](#)” STEP-1 to STEP-4 to find the service.

Step 4 Install ASM200 ver.4.10 or newer.

Step 5 Load the saved setup data.

# Trouble shooting for upgrading SQL server (5/5)

(CASE-3)

Service could not “start” even after installing SQL Server 2012.

Step 1 Uninstall SQL server 2012.

Step 2 If you can find some SQL related files, services, uninstall or disable them.

Step 3 Install SQL server 2012.

\* If you can find “SQL Server(ASM200)” in Services(LOCAL), the installation is succeeded..  
Refer “[3. Uninstall SQL Server 2005 Express](#)” STEP-1 to STEP-4 to find the service.

Step 4 Install ASM200 ver.4.10 or newer.

Step 5 Load the saved setup data.