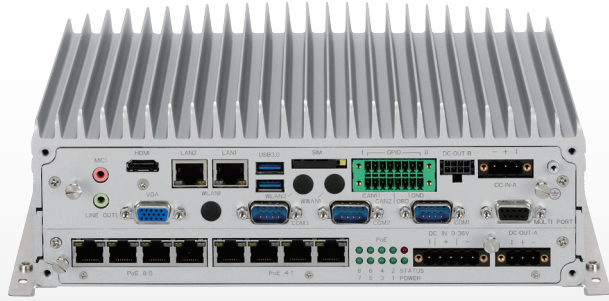


i-PRO



TRANSIT VIDEO RECORDER | MR-8C-I3-MLXTB-W

MODEL	STORAGE	WI-FI	RAM
MR-8C-I3-ML1TB-W	(1 X 1TB, 2.5" MLC-SSD)	802.11a/b/g/n/ac	8GB
MR-8C-I3-ML2TB-W	(2 X 1TB, 2.5" MLC-SSD)	802.11a/b/g/n/ac	8GB
MR-8C-I3-ML4TB-W	(2 X 2TB, 2.5" eTLC-SSD)	802.11a/b/g/n/ac	8GB

• Total usable storage is calculated based on advertised HDD size, not OS recognition.

PRELOADED TRANSIT VIDEO RECORDER – 8 CHANNEL

- Fully Tested and Configured
- Includes VI Enterprise Server License
- Superior US-Based Technical Support
- 3-Year Hardware Warranty*

OPERATING CONDITIONS AND RATINGS

TEMPERATURES

Unit: -30°C-60°C

RELATIVE HUMIDITY

10% to 90% (Non-Condensing)

VIBRATION DURING OPERATION

Operating: MIL-STD-810G, Method 514.6, Category 4, Common Carrier US HWY Vibration Exposure

SHOCK RATING

MIL-STD-810G

Operating Functional Shock=20g

None Operation Functional Shock=75g

CERTIFICATIONS

CE Approval, FCC Class A, E13 Mark

SERVER SPECIFICATIONS

PROCESSOR

Intel I3| Dual Core| 2.3 GHz Turbo

MEMORY

8GB 2XDDR3L SO-DIMM 2X

I/O SLOTS

USB| 4 X USB 3.0 Type A

GPIO

4 X Input, 4 X Output

COM

2 X RS-232, 1 X RS-232/422/485

NETWORK PORTS

8 X PoE RJ45

POE CAPACITY

Max. 60W

DRIVE BAY

2 X 2.5inch

AUDIO

4 x 3.5mm ports
2x Line-in 2x Line-Out

EMBEDDED NIC

1000 BASE-T Dual Port LOM
(LAN on Motherboard)

POWER SOURCE

Auto Ranging (9V-36V DC)

OPERATING SYSTEM

Windows 10 IoT

GRAPHICS CARD

Intel Onboard Graphics

VIDEO OUTPUT

1 X HDMI, 1 X VGA

DIMENSIONS

(W) 10.24" X (D) 7.72" X (H) 3.58"

WARRANTY

Standard 3-Year Warranty

MONITOR

Not Included

SOFTWARE LICENSING

IPSVC-UL

3rd Party Camera License for VI / Transit Solution: Not Needed if Using i-PRO or Advitia Cameras

IPSVS-AD-TRANS-UL

Software Needed per Mobile Recorder Unit to: Activates GPS Positioning Data & Wi-Fi Video Offloading Capabilities with VI IP Server

ACCESSORIES

MR-POW-5P

AC Adapter 120W w/ Phoenix Connector 5pin: Alternative Power Supply
(NOT FOR DEPLOYMENT | ONLY FOR TESTING)