

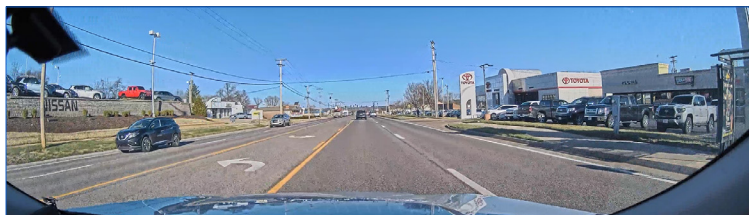
NEW i-PRO WV-VCF41P 4K SENSOR PANORAMIC FRONT CAMERA



WV-VCF41P PANORAMIC FRONT CAMERA

The new i-PRO WV-VCF41P 4K Sensor Panoramic Front Camera harnesses the power of the advanced Ambarella™ AI Vision processor for AI Edge applications.

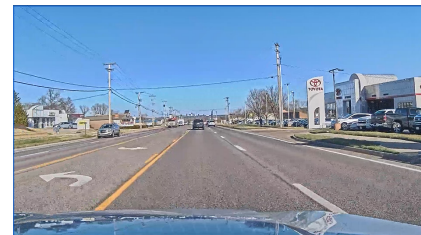
i-PRO reduces your storage requirements by focusing on the view you need in front of the vehicle. This extremely wide panoramic view captures high resolution video evidence that other cameras miss.



WV-VCF41P (150° Field of View 32:9)

KEY FEATURES

- NEW** Panoramic 150° Field of View for full windshield coverage
- NEW** 4K Image Sensor for the Ultra HD image quality
- NEW** Enhanced lens and video processing for minimal edge distortion
- NEW** License Plate readability maintained within a majority of the horizontal region
- NEW** Single Button for Recording/Stop with recording light indicator



WV-VC35 (86° Field of View 16:9)

GENERAL

Model Number	WV-VCF41P
Resolution:	Main Stream: 3840 x 1080p Bitrate: 14336, 10240, 8192 kbps 2560 x 720p Bitrate: 8192, 6144, 4096 kbps Live Stream: 1280 x 360p Bitrate: 4096, 2048, 1024, 768, 512, 256, 128 kbps 640 x 180p Bitrate: 4096, 2048, 1024, 768, 512, 256, 128 kbps
Pixels:	Approximately 8.4M effective pixels across the entire image sensor before trimming edges
Video CODEC:	H.264 / H.265 Ready
SoC	Ambarella CV22
Scanning System:	Progressive
Zoom Ratio:	1x Optical; 3x Digital (x1, x1.5, x2, x3)
Focal Length:	3.1mm (1/8 inches)
Aperture:	1:1.8
Aperture Range:	F1.8 Fixed
Focus Range:	1.5m (59 inches) - ∞
Image Sensor:	1/1.8 CMOS Image Sensor
Aspect Ratio:	32:9
Field of View:	Horizontal: 150° Vertical: 40°
Low-light Capability:	Color: 0.16lx (0.0149 footcandle) (F1.8, AGC:On(High)) Monochrome: 0.12 lx (0.0112 footcandle) (F1.8, AGC: On(High))
Picture Mode:	SuperD, Night, Off
Gain (AGC):	On Low/Mid/High, Off
G-Force Sensor:	Internal Off, On (10 levels)
Auto Adjustments:	Auto White Balance
Focus:	Fixed
Day/Night:	On / Off / Auto
Buttons:	Single Record/Stop
LED Indicators:	Front and Rear to indicate recording (configurable)
Power Source:	PoE (IEEE802.3af compliant) via RJ45 connector
Power Consumption:	PoE DC 48V 180mA/Approx. 8.6W (Class 0 Device)
Operating Environment:	Temperature: -10°C to 50°C, 14°F to 122°F Humidity: 10% to 90% (no condensation)
Weight:	.52 lbs. (235g)
Dimensions:	4.60" (W) x 1.85" (H) x 1.18" (D)
Mounting Bracket:	Visor Plate, pivoting arm included
Compatibility:	WJ-VPU4000, UDE and CloUDE



LEARN MORE

i-pro.com/us/en/publicsafety/WV-VCF41P

©2022 i-PRO Americas Inc. All rights reserved. R042222

