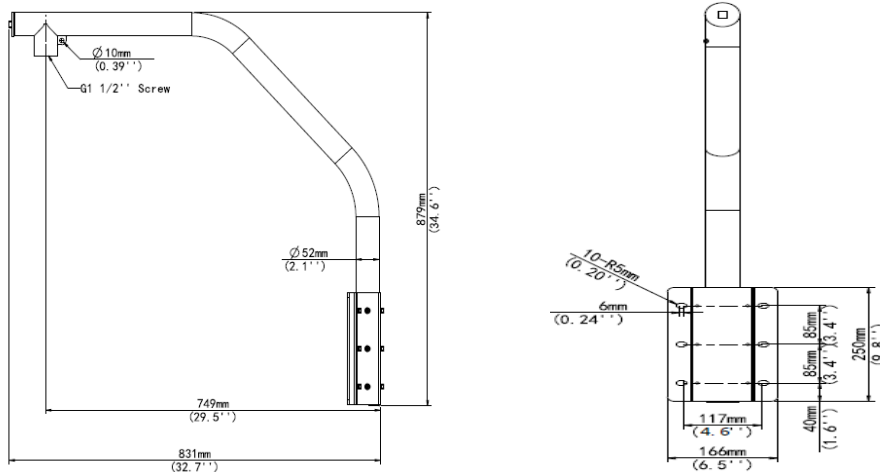




Technical Specifications

| | |
|--------------------|-------------------------------|
| Application | Outdoor, for PTZ dome camera |
| Dimensions (L x H) | 879mm x 831mm (34.6" x 32.7") |
| Weight | 4.3kg (9.47lb) |
| Material | Aluminum alloy |

Dimensions



R113021 | Product specifications and availability are subject to change without notice.

Panasonic i-PRO Sensing Solutions Co., Ltd. i-PRO, Viewnetcam.com, FacePRO, Advitia, VideoInsight, Arbitrator, CloUDE, and Unified Digital Evidence are registered trademarks or trademarks of Panasonic i-PRO Sensing Solutions Co., Ltd. or Panasonic i-PRO Sensing Solutions Corporation of America in various jurisdictions. All other trademarks are the property of their respective owners.