

Digital Disk Recorder

Model No. WJ-HD616K, WJ-HD616K/G
WJ-HD716K, WJ-HD716K/G

Quick Reference Guide

How to start the recorder

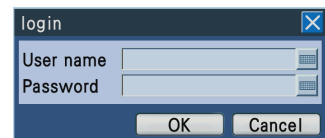
- 1** Insert the power plug to an outlet and press the power switch on the rear of the recorder to turn on the power.
→ The OPERATE indicator lights and the startup screen appears.
- 2** Press any of the buttons on the front panel of the recorder after system check is complete and the startup screen disappears.
→ The login window opens.



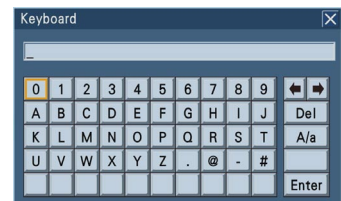
Startup screen

• If the auto login function is activated, the steps 2, 3 and 4 are not necessary.

- 3** After the login window opens, press the [SET] button to display the on-screen keyboard and enter the user name and password.
- 4** Use the arrows button to select [OK] and press the [SET] button.
→ After entry of correct user name and password, the login window closes and a live image is displayed.



Login window



On-screen keyboard

Basic operations

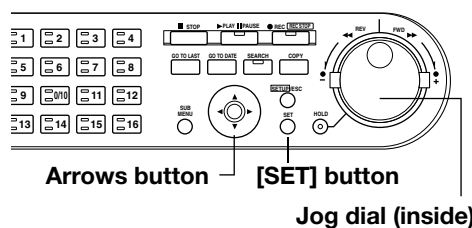
Sub menu display

- Press the [SUB MENU] button on the front panel.
- Click **S.Menu** in the status bar.



Sub menu

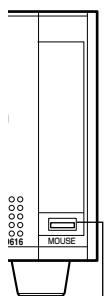
Operation using buttons on the front panel



- Use the arrows button to select a function and press the [SET] button to perform the function.
- Rotate the jog dial clockwise or counterclockwise to change settings.

Operation using a mouse

- Connect a mouse to the mouse port on the front panel.
- To select buttons on the monitor, click the mouse.
- Right-click the mouse, and the operation panel appears.



Mouse port



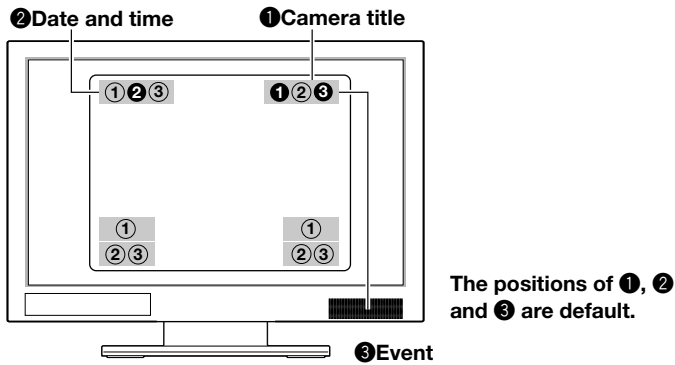
Operation panel

• The mouse wheel is not operable.

Operation window (monitor screen)

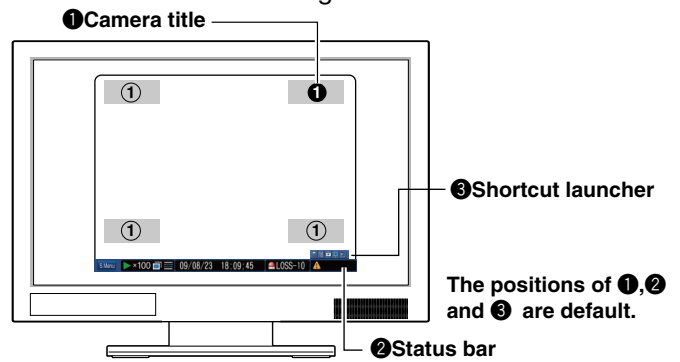
Monitor 1

Displays live images only.



Monitor 2

Displays live images and recorded images.



- Each item is display at the specified position.
- "Event" and "Date and time" are displayed in symmetrical relation with each other.

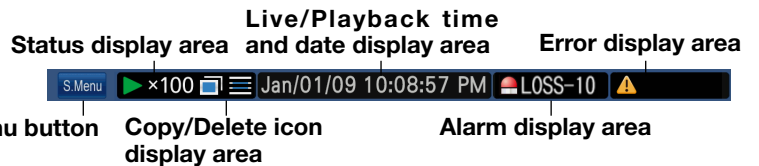
- The setup menu is displayed only on Monitor 2.
- When 1 unit of monitor is in use, only Monitor 2 is used under normal conditions.

Shortcut launcher

Displayed only when a mouse (commercially available) is connected



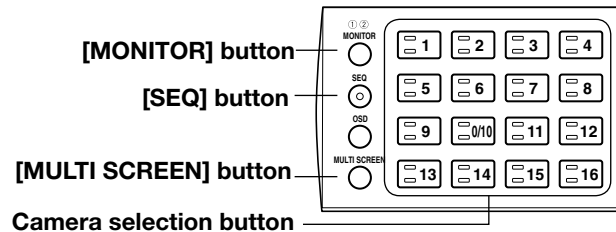
Status bar



Camera selection/display method selection

Camera selection and image display

- 1 Press the [MONITOR] button to select a monitor to be operated.
 - Monitor 1 selected: ① lights.
 - Monitor 2 selected: ② lights.
- 2 Press the camera selection button ([1] - [16]) to select a camera.
 - The live image from the selected camera is displayed.



Indicator of camera selection button

- Lights green: Displaying on monitor
- Lights orange: Recording


Image display on a multi-screen

- 1 Select a monitor to be used and press the [MULTI SCREEN] button.
 - Each time the [MULTI SCREEN] button is pressed, the screen pattern changes according to the predetermined settings.

Image display in a sequential manner

- 1 Select a monitor to be used and press the [SEQ] button.
 - Images are displayed sequentially according to the predetermined settings. (The indicator of [SEQ] button lights.) To stop the sequence, press the [SEQ] button again. (The indicator of [SEQ] button goes off.)

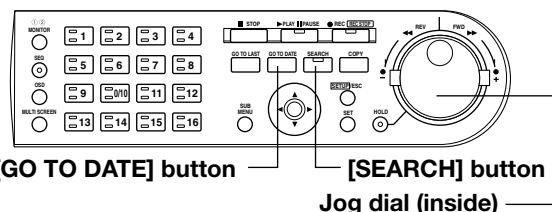
To operate using the mouse

- 1 Right-click the mouse to display the operation panel.
 
- 2 Click the appropriate button to perform the operation. To close the operation panel, click the area on the screen other than the operation panel.

Search and playback

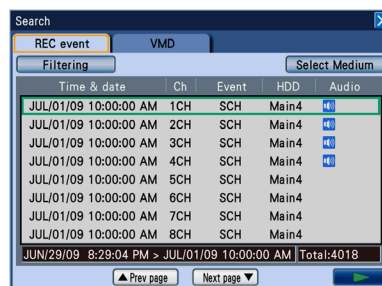
Playback of image at specified date and time

- 1** Press the [GO TO DATE] button.
→ The date and time search window appears.
- 2** Enter the date and time, and select the [▶] (play) button.
→ Playback of the recorded images starts from the point of the entered date and time.



Search for and playback of recording events

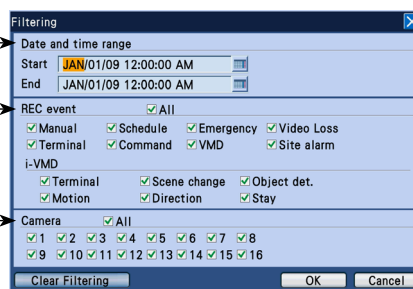
- 1** Press the [SEARCH] button.
→ The recording event list window appears.
- 2** Select the [Filtering] button.
→ The search filter window appears.
- 3** Specify the filtering conditions and select the [OK] button.
To cancel the filtering, select the [Clear Filtering] button.



• **Filtering by date and time range**
Use the arrows button to move the cursor and rotate the jog dial to select a date and time.

• **Filtering by event**
Use the arrows button to move the cursor to the event to be selected, press the [SET] button, and check the items to be selected.

• **Filtering by camera**
Use the arrows button to move the cursor to the camera channel to be selected, press the [SET] button, and check the items to be selected.



→ The filtered result is displayed on the recording event list window.

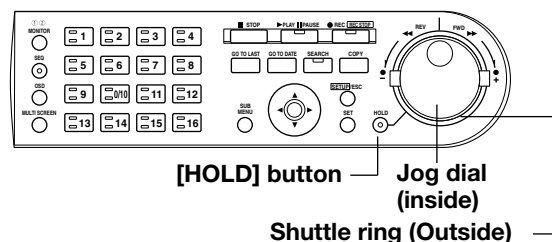
- 4** Rotate the jog dial to select a recording event from the displayed event list and select the [▶] (play) button.
→ The images corresponding to the recording event to be selected play.

Operations during playback

Playback with fast forward/fast reverse

Rotation of the shuttle ring during playback results in the following:

- Clockwise: Playback with fast forward
Counterclockwise: Playback with fast reverse
- The playback speed changes in 6 different levels (1/2x, 1x, 2x, 5x, 10x, and 20x) according to the rotation angle of the shuttle ring. In addition, holding the shuttle ring at 20x for 10 seconds increases the playback speed to 50x, and holding the ring at 50x for 10 seconds increases the speed to 100x.
- To maintain the playback speed (hold playback speed function) even after releasing the shuttle ring, press the [HOLD] button. (The indicator of [HOLD] button blinks.) To restore the normal playback speed, press the [HOLD] button again. (The indicator of [HOLD] button goes off.)



Skip (playback after a skip)

Rotation of the jog dial during playback results in the following:

- Clockwise: Playback of the next recorded image
Counterclockwise: Playback of the previous recorded image
- If the skip destination image does not exist, the currently playing image is maintained.

To operate using the mouse

- 1** Select [REC & Playback] in the sub menu to call the recording/playback panel.
-
- 2** Click the appropriate button to perform the operation. To close the operation panel, click the [x] button at the upper right corner of the panel.

Copying recorded images on SD memory card (or DVD)



1 Insert an SD memory card into the SD card slot. Alternatively, insert a DVD into the DVD drive. (if a DVD drive is equipped)


2 Press the [COPY] button.
→ The data copy window appears.

3 Specify the conditions of the recorded images to be copied and the copy destination, and select the [OK] button.

- Selection of copy destination (Selection of "SD" or "DVD")
- Filtering by date and time range
- Filtering by event
- Filtering by camera
- Setting to determine whether or not to attach the alteration detection code to the recorded images to be copied.

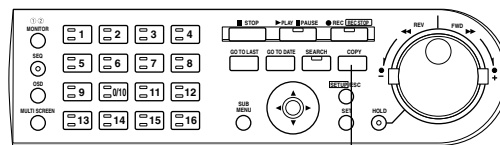
4 Ensure that the data size to be copied is smaller than the available capacity, and select the [Copy] button. Depending on the size of the data to be copied, it may take more than 1 hour to display the data size.

→ The copied data list window closes and copying starts. The icon  indicating copy in process is displayed in the status bar during copying. When the icon  indicating copy in process disappears, remove the SDHC/SD memory card.

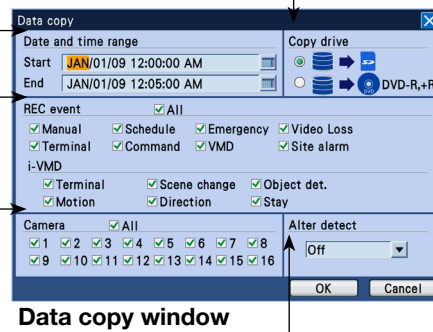
5 If the copy media is a DVD, the copy completion operation is required to eject the DVD after copying. Press the [COPY] button after the icon  indicating copy in process disappears.

→ The confirmation window appears to eject the media.

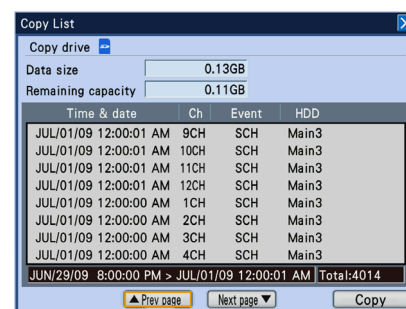
6 Select "Eject a medium", and eject the DVD after the message indicating that the media is ejectable.



[COPY] button



Data copy window



Copied data list window

Recorded data				Time required to copy	
Resolution	Image quality	Rate	Time	SD	DVD
Field	FQ	15 ips *	10 min.	Approx.	Approx.
		12.5 ips **		30 sec.	90 sec.
Frame	FQ	7.5 ips *	10 min.	Approx.	Approx.
		6.25 ips **		20 sec.	80 sec.

* For NTSC models ** For PAL models

Estimated time to copy (per 1 channel)

Error indication

When any of the error indications described below is observed, press the [ALARM RESET] button to cancel the error. Follow remedies to handle errors.

Error indication	Cause/Remedy
ALT-*	Recorded images have been altered. To resume playback, press the [PLAY/PAUSE] button again.
SMART	The built-in HDD may be damaged, resulting in the risk of operability failure. Contact the dealer to replace the HDD.
H-METER	The set time for the hour meter has passed. The life of the HDD may be nearly exhausted. Contact the dealer to replace the HDD.
THERMAL	The temperature of this unit or connected extension units has been detected to be abnormal. If a temperature anomaly is frequently detected, this unit is likely to be damaged. Contact the dealer.

* : A camera number (1-16) is displayed here.
 ** : For normal recording area, "NML" is displayed here. For event recording area, "EVT" is displayed here.
 -nn : An available capacity value is displayed here.

Error indication	Cause/Remedy
**-nn%	The available memory area is nearly exhausted or exhausted.
EVT-FULL	Format the HDD or replace the HDD with new one. Before format the HDD, copy the necessary data on the HDD to an external storage unit.
REMOVE	Occurrence of a HDD error results in automatic isolation of the HDD from the operational system. Contact the dealer.
FAN	A fan error on this unit or extension units has occurred. Contact the dealer.
POWER	An outage detection signal is provided from the uninterruptible power system (UPS). Once the shutdown process starts, recording stops and all the operations are disabled. The uninterruptible power system (UPS) provides the recorder with power, and the recorder automatically starts operations.