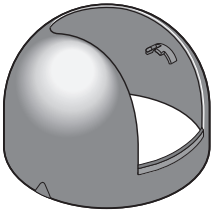


## Operating Instructions

### Inner Cover

Model No. **WV-Q161**



Before attempting to install this product, please read these instructions carefully and save this manual for future use.

The model number is abbreviated in some descriptions in this manual.

## Preface

This product is an inner cover that is exclusively designed to be used with the network cameras. Refer to the catalog or the installation guide of the camera for supported cameras.

This inner cover is a component to lower the reflection of the dome part of the network camera.

## Precautions

- **Be sure to engage the inner cover onto the camera main body before installation of the camera main body.**

Failure to observe this may cause a drop resulting in injury or accidents.

- **Refer installation work to the dealer.**

Installation work requires skills and experiences. Failure to observe this may cause fire, electric shock, injury, or damage to the product. Be sure to consult the dealer.

## Installations

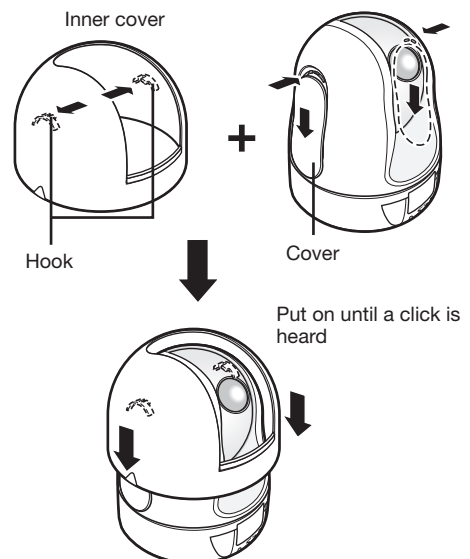
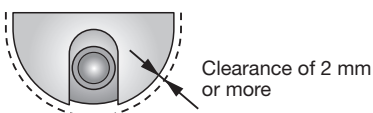
Be sure to read "Precautions" before installation.

### How to engage the inner cover

Slide the covers located on the both lateral sides of the camera and put the inner cover on the camera until the hooks inside the inner cover are engaged in the holes of the camera (until a click is heard).

#### Important:

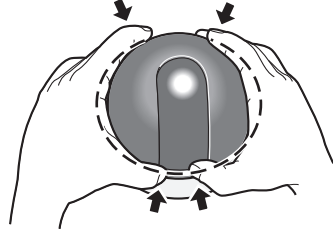
- Put the inner cover down on the camera until the outside cover of the camera cannot be seen from the opening (from which the camera lens is visible) of the inner cover. If this engagement work is not successfully performed, the inner cover may be removed or the hidden part at the top of the screen may become larger in the wide mode.
- When the inner cover with this product and a dome housing equipped is mounted, the clearance between this product and the housing shall be 2 mm or more.



## How to remove the inner cover

- Press the inner cover from the front and rear sides inward (at the same vertical position as the hooks) to bend the cover and remove the inner cover from the camera.

Press from the front and rear sides inward to bend



## Specifications

Ambient temperature	: -10 °C to +50 °C {14 °F to 122 °F}
Dimensions	: ø117 mm × 79 mm (H) {ø4-19/32 inches × 3-1/8 inches (H)}
Mass	: Approx. 50 g {0.11 lbs.}
Finish	: ABS resin Lusterless black

## Standard Accessories

Operating Instructions (this document)	1 pc.
--	-------

### For U.S. and Canada:

i-PRO Americas Inc.

### For Europe and other countries:

i-PRO EMEA B.V.

<https://www.i-pro.com/>