

iii-PRO

Operating Instructions

Extension Software

(For network camera type 7)

Model No. **WV-SAE200W**



Before attempting to connect or operate this software,
please read these instructions carefully and save this manual for future use.

The model number is abbreviated in some descriptions in this manual.

Contents

Introduction.....	3
Preface.....	3
Features	3
About the Operating Instructions.....	4
System requirements for a PC.....	4
Trademarks and registered trademarks	4
Copyright	4
Disclaimer of warranty	5
Limitation of liability	5
Before using this product	6
Operation flow	7
Install the Software	7
How to obtain and register the Registration Key.....	8
Necessary Setup	10
On the setting procedure	10
1. Open the setting menu	11
2. Area setting	12
3. Detailed setting (as necessary)	15
4. Schedule setting	18
5. Alarm setting	19
Operation	20

Introduction

Preface

The Extension Software WV-SAE200W (hereafter referred to as this software) is software for more conveniently using the network camera (option, hereafter referred to as the camera). It is possible to use the i-VMD function (alarm function: INTRUDER/LOITERING/DIRECTION/CROSS LINE) by installing this product on your camera and registering the release key.

Important

- This product is necessary for each camera.
- See the URL below for information such as the models supported by this software, the software version, etc.
<https://i-pro.com/global/en/surveillance/training-support/support/technical-information>

Features

- i-VMD can detect moving bodies in the four modes below and then alarms occur.
 - INTRUDER: Detects if moving bodies intrude into the predetermined area.
 - LOITERING: Detects if moving bodies loiter in the predetermined area beyond the fixed time.
 - DIRECTION: Detects if moving bodies move in the direction you specified within the predetermined area.
 - CROSS LINE: Detects if moving bodies cross the predetermined line in the direction you specified.

Below are examples of each detection.

INTRUDER



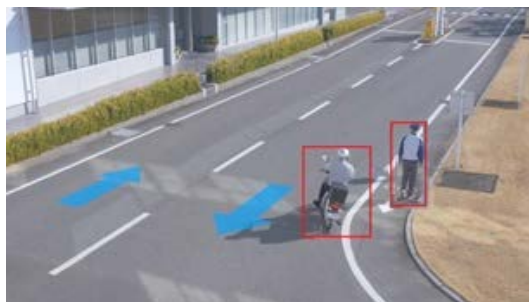
An alarm occurs when moving bodies are detected intruding into the predetermined area.

LOITERING



An alarm occurs when moving bodies are detected intruding into the predetermined area.

DIRECTION



An alarm occurs when moving bodies are detected moving in the direction you specified within the predetermined area.

CROSS LINE



An alarm occurs when moving bodies are detected crossing the predetermined line in the direction you specified.

Introduction (continued)

About the Operating Instructions

This manual explains the methods of installing this product in a camera (network camera type 7), settings that need to be made before starting to operate this software, and the method of operation for using this product. Since this product is used after being installed on a camera, before using this product always be sure to also read the Operating Instructions of the camera with which this product is to be used.

Based on the specific model of a camera which is used, its screen may be different from the screen shown in this manual.

In this manual, a personal computer is referred to as a PC.

Refer to the following URL for compatible models of network camera type (type 7).

- DG/WV series
https://connect.panasonic.com/jp-ja/products-services_security_support_technical-information

System requirements for a PC

For the requirements of PC which are used for settings refers to the Operating Instructions of a camera.

Trademarks and registered trademarks

- Internet Explorer, and ActiveX are either registered trademarks or trademarks of Microsoft Corporation in the United States and/or other countries.
- Microsoft product screen shot(s) reprinted with permission from Microsoft Corporation.

Copyright

Distributing, copying, disassembling, reverse compiling and reverse engineering of the software provided with this product are all expressly prohibited. In addition, exporting any software provided with this product violating export laws is prohibited.

Introduction (continued)

Disclaimer of warranty

IN NO EVENT SHALL i-PRO Co., Ltd. BE LIABLE TO ANY PARTY OR ANY PERSON, EXCEPT FOR REPLACEMENT OR REASONABLE MAINTENANCE OF THE PRODUCT, FOR THE CASES INCLUDING BUT NOT LIMITED TO BELOW:

- (1) ANY LOSS OR DAMAGE, INCLUDING WITHOUT LIMITATION, DIRECT OR INDIRECT, SPECIAL, CONSEQUENTIAL OR EXEMPLARY, ARISING OUT OF OR RELATING TO THE PRODUCT;
- (2) INCONVENIENCE OR ANY LOSS ARISING WHEN IMAGES ARE NOT DISPLAYED, DUE TO ANY REASON OR CAUSE INCLUDING ANY FAILURE OR PROBLEM OF THE PRODUCT;
- (3) ANY PROBLEM, CONSEQUENTIAL INCONVENIENCE, OR LOSS OR DAMAGE, ARISING OUT OF THE SYSTEM COMBINED WITH THIRD PARTY DEVICES;
- (4) ANY CLAIM OR ACTION FOR DAMAGES BROUGHT BY ANY PERSON OR ORGANIZATION AS A PHOTOGRAPHED SUBJECT DUE TO VIOLATION OF PRIVACY CONCERNING A SURVEILLANCE CAMERA'S PICTURE OR SAVED DATA, FOR SOME REASON (INCLUDING USE WHEN USER AUTHENTICATION ON THE AUTHENTICATION SETTING SCREEN IS SET TO OFF), BECOMING PUBLIC OR BEING USED FOR ANY PURPOSE;
- (5) LOSS OF REGISTERED DATA CAUSED BY ANY FAILURE (INCLUDING INITIALIZATION OF THE PRODUCT DUE TO FORGOTTEN UTHENTICATION INFORMATION SUCH AS A USER NAME AND PASSWORD).

Limitation of liability

THIS PUBLICATION IS PROVIDED "AS IS" WITHOUT WARRANTY OF ANY KIND, EITHER EXPRESS OR IMPLIED, INCLUDING BUT NOT LIMITED TO, THE IMPLIED WARRANTIES OF MERCHANTABILITY, FITNESS FOR ANY PARTICULAR PURPOSE, OR NON-INFRINGEMENT OF THE THIRD PARTY'S RIGHT. THIS PUBLICATION COULD INCLUDE TECHNICAL INACCURACIES OR TYPOGRAPHICAL ERRORS. CHANGES ARE ADDED TO THE INFORMATION HEREIN, AT ANY TIME, FOR THE IMPROVEMENTS OF THIS PUBLICATION AND/OR THE CORRESPONDING PRODUCT(S).

Before using this product

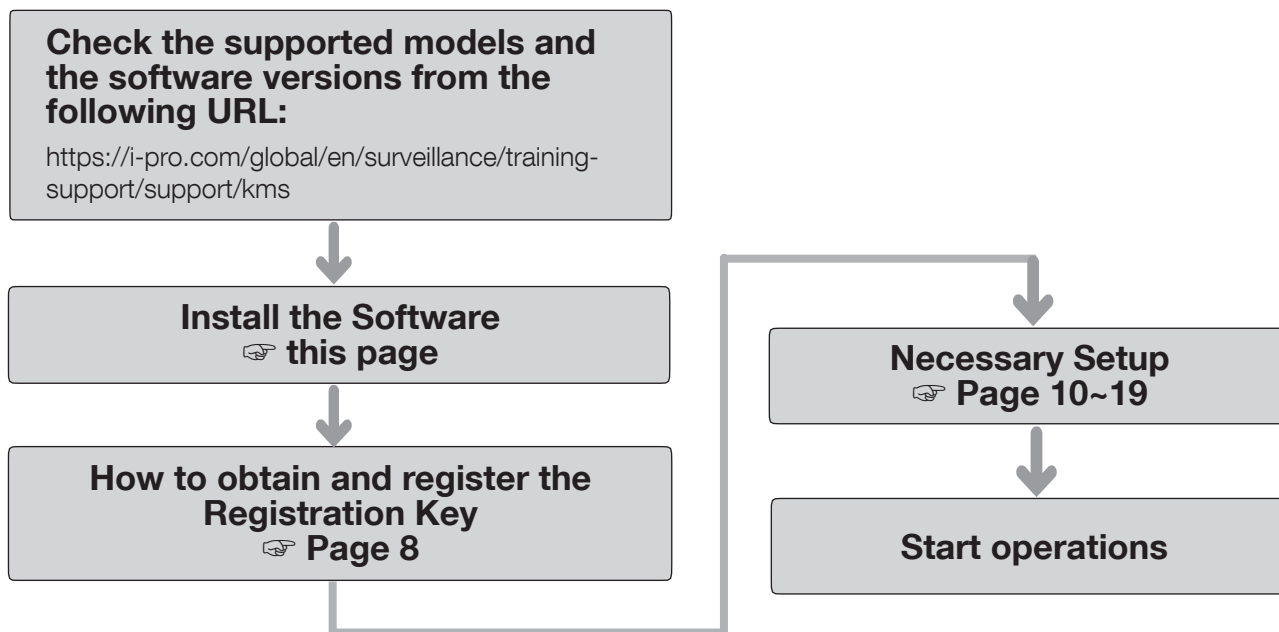
The conditions below may make it difficult to detect movement, or cause missing alarms or false alarms.

- The background and the moving photographic subject are equally bright.
- The video brightness is low, which can happen at night.
- The photographic subject is moving too fast or too slow.
- The photographic subject is too small or too large.
- The light condition is subject to change, which can happen outdoors or near windows.
- Sunlight, car headlights, and other outside light has come in.
- There are flickering fluorescent lights.
- There are water drops or stains on the camera dome.
- The photographic subject is moving directly toward the camera.
- There are too many moving bodies.
- The camera is quivering.
- The weather is significantly unfavorable.
- More than one human comes in.
- Shadows interfere in the detection areas.

Other cautions are explained below.

- If there are factors for false detection in the screen such as trees shaking, roads (with moving cars), water surfaces (with reflected light), etc., you can set mask areas (☞ page 12) to reduce false detections.
- When you set up i-VMD, configure the area setting so that they suit the installation condition of the camera and the expected movement of photographic subjects (☞ page 12), and check whether the camera operates appropriately during the day and at night.
- False detection may occur for approximately 1 minute after turning on the camera, changing the camera settings, or changing the angle of field of the camera.
- As long as detectable objects exist on the screen, an alarm occurs at specified intervals. Thus, e-mails and TCP alarm notification are also notified at specified intervals. (See [Alarm deactivation time] on the [Alarm] tab of the camera setup menu).
- If the i-VMD is installed with the following cameras, the transmission frame rate is limited from 30 fps max. to 15 fps (from 25 fps max. to 12.5 fps, during 25 fps mode).
Product No.: WV-S1572L, WV-S2572L, WV-S2272L
- If the i-VMD is installed, JPEG(1) Image capture size is fixed to the same Image capture size set for stream (1).
- i-PRO Co., Ltd. shall not be responsible for any inconveniences, losses, or damages caused by the settings of i-VMD or as a result thereof.
- i-VMD is not for preventing theft, disaster, etc. i-PRO Co., Ltd. shall not bear any liabilities whatsoever for any accidents or losses.

Operation flow



Install the Software

Follow the steps below to download this product and install it on your camera.

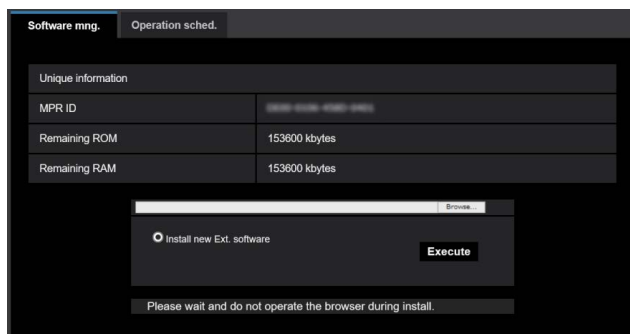
- (1) Access the following URL to download type 7 from "Extension Software (MV-SAE200)" and save it into the PC.

<https://i-pro.com/global/en/surveillance/training-support/support/kms>

Important:

- A space cannot be used in the name of the saving directory.

- (2) Select the [Setup] - [Ext. software] - [Software mng.] tab of the camera.



Important:

- Check "Remaining ROM" and "Remaining RAM" of the camera. If disk space is insufficient, uninstall any other extension software already installed. For how to uninstall, refer to the "Operation settings" section in the Operating Instructions of the camera.

- (3) Click the [Browse...] button and designate the downloaded "Extension Software (MV-SAE200)".
- (4) Make sure that "Install new Ext. software" is selected and click the [Execute] button. Then the software installation will begin. When the installation is completed, "i-VMD" will be added to the "Software mng." screen. (The names may be partially omitted.)

Important:

- Do not turn off the power of the camera when installing the software.
- Do not perform any operations until the installation is completed.

How to obtain and register the Registration Key

This product needs to be activated by "Registration Key" issued by Key Management System before you start using.

Follow the steps below to obtain the Registration Key.

<If you do not have your User ID and password for the Key Management System>

- * Access the website of the Key Management System and create your User ID and password.
Then start reading from STEP 1 below.

<If you already have your User ID and password for the Key Management System>

- * Access the website of the Key Management System and "Issue Registration Key" with the User ID and password that you have obtained.
Then start reading from STEP 2 below.

STEP 1 Sign up

Create your User ID and password, if this is the first time to access the Key Management system.

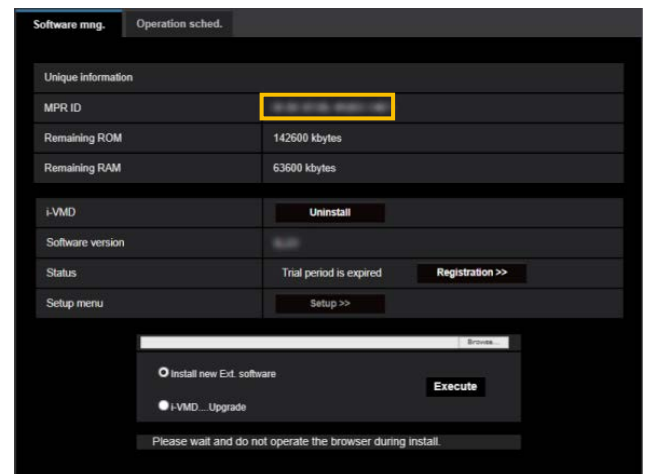
- (1) Access the URL for PC below and sign up.
 - For PC
<https://kms.business.panasonic.net/ipkms/pc/home.htm>
- (2) Login as a temporary user using the User ID and password written on the web page.
- (3) Register required information and create your User ID and password.

Important:

- Keep your User ID and password safe. You do not need to obtain a new User ID from the next time. Use the User ID already issued.
- It is recommended to change the password periodically.

STEP 2 Obtain the Registration Key

- (1) Check the MPR ID, Activation Key No. and Registration ID.
 - For the MPR ID, refer to [MPR ID] on the [Setup] - [Ext. software] - [Software mng.] tab of the camera.



- The Activation Key No. and Registration ID are shown on the Activation Key Card.

Note:

The MPR ID can also be checked on the product package.

How to obtain and register the Registration Key (Continued)

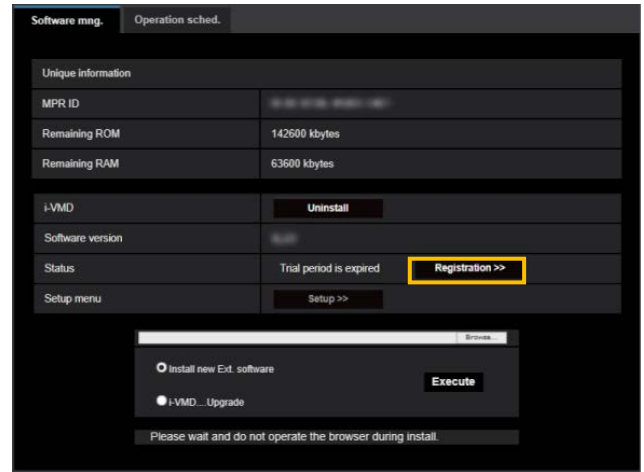
- (2) Access to the following URL "Key Management System" from your PC or Smartphone.
 - For PC:
<https://kms.business.panasonic.net/ipkms/pc/home.htm>
 - For Smartphone:
<https://kms.business.panasonic.net/ipkms/m-key/>
- (3) Login using your User ID and password.
- (4) Click [Issue Registration Key] button.
- (5) Select your product from the menu and click [Next step] button.
- (6) Input your "MPR ID", "Activation Key No." and "Registration ID".
- (7) Click the [Issue] button.
- (8) Then "Registration Key" will be issued on the screen and sent to your e-mail address.
We recommend keeping "Registration Key" together with Activation Key Card for future support.

Important:

- Please make sure the combination between "MPR ID" and "Activation Key No." is correct when issuing "Registration Key". Because once you issued "Registration Key", you cannot issue new one from the same "Activation Key No."
- To issue the Registration Key for another camera, go through (6) and (7) of STEP 2.
- If you register multiple Registration Keys for one camera, you can issue them at the same time by entering multiple Activation IDs and Encryption IDs in STEP 2 (6).

STEP 3 Register the Registration Key

- (1) Select [Setup] - [Ext. software] - [Software mng.] tab of the camera.



- (2) Click the [Registration >>] button to display the "Registration of application" screen.



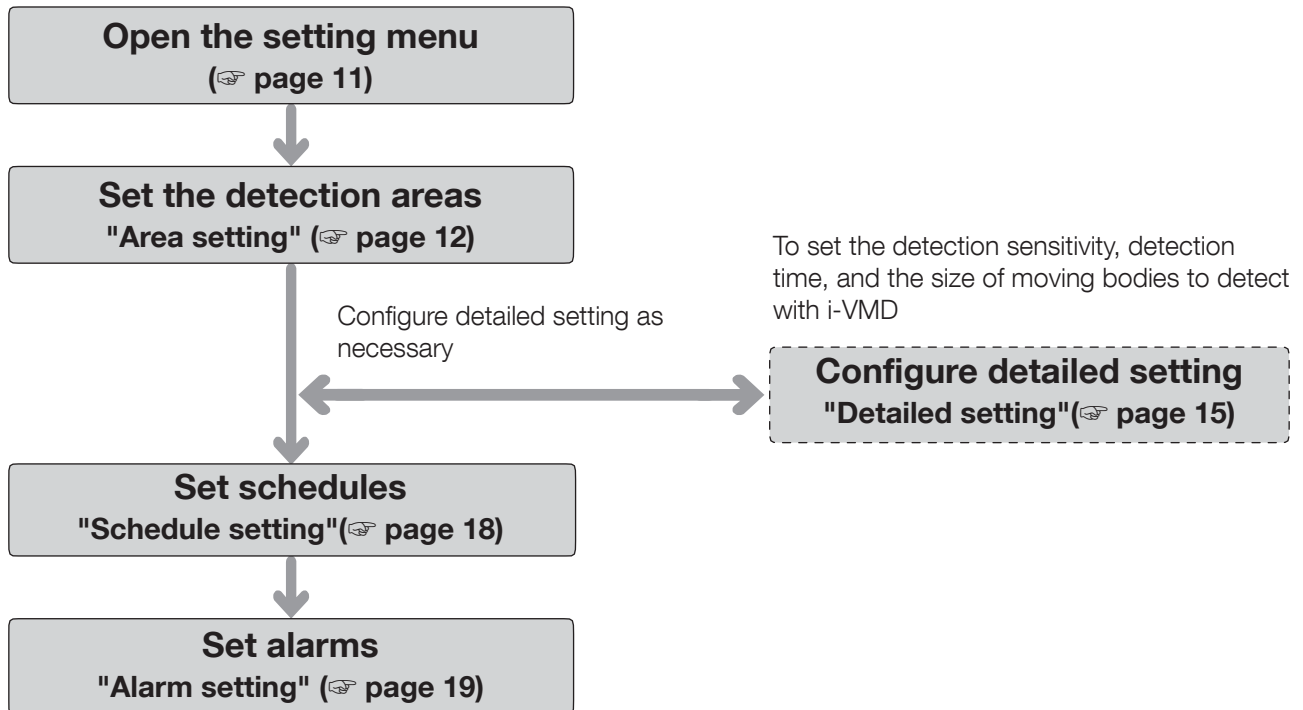
- (3) Enter the Registration Key obtained in STEP 2 in the "Registration Key" field with no dashes (-) in between, and click the [Set] button. Once you register the Registration Key, the "Extension Software (WV-SAE200)" function will be activated.

Note:

- The registration of the Registration Key is only operable by users whose access level is "1. Administrator". Refer to the Operating Instructions of the camera for how to configure the access level.
- The setting screen may not be refreshed for a maximum of 10 seconds before this product starts operating after the Registration Key is registered. Moreover, after the Registration Key is registered, do not operate the browser until the setting screen is refreshed.

Necessary Setup

On the setting procedure



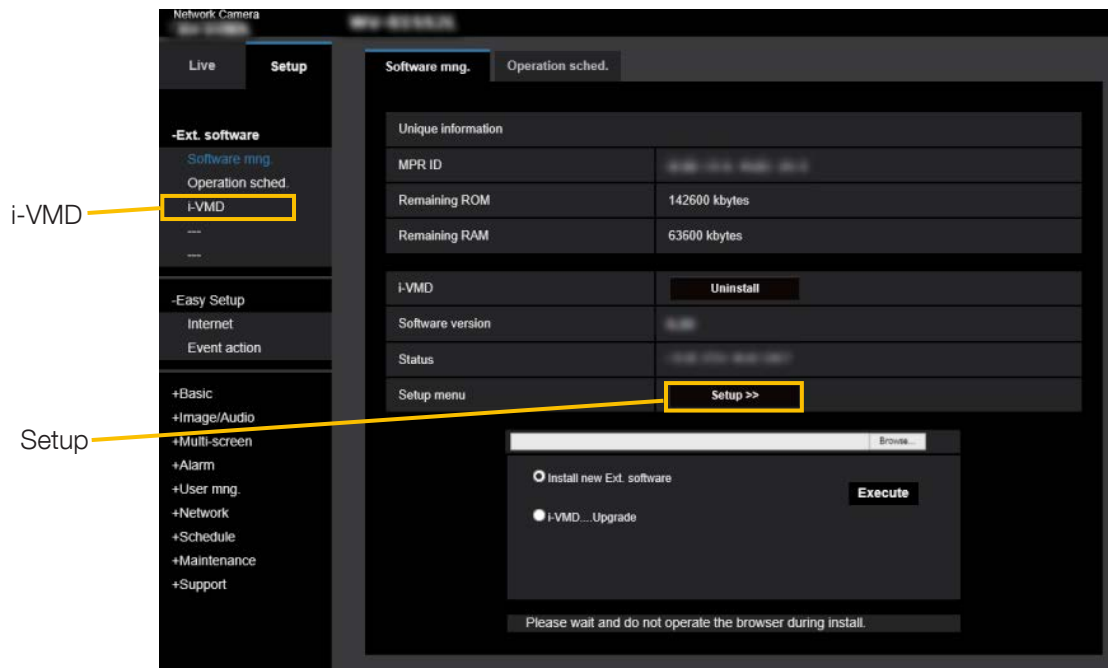
Important

- Use Internet Explorer 11 (32-bit) for setting. Also, you need to install the plug-in software for displaying "Network Camera View 4S (ActiveX)" on the PC beforehand.
For more information, refer to the Operating Instructions of the camera.

Necessary Setup (continued)

1. Open the setting menu

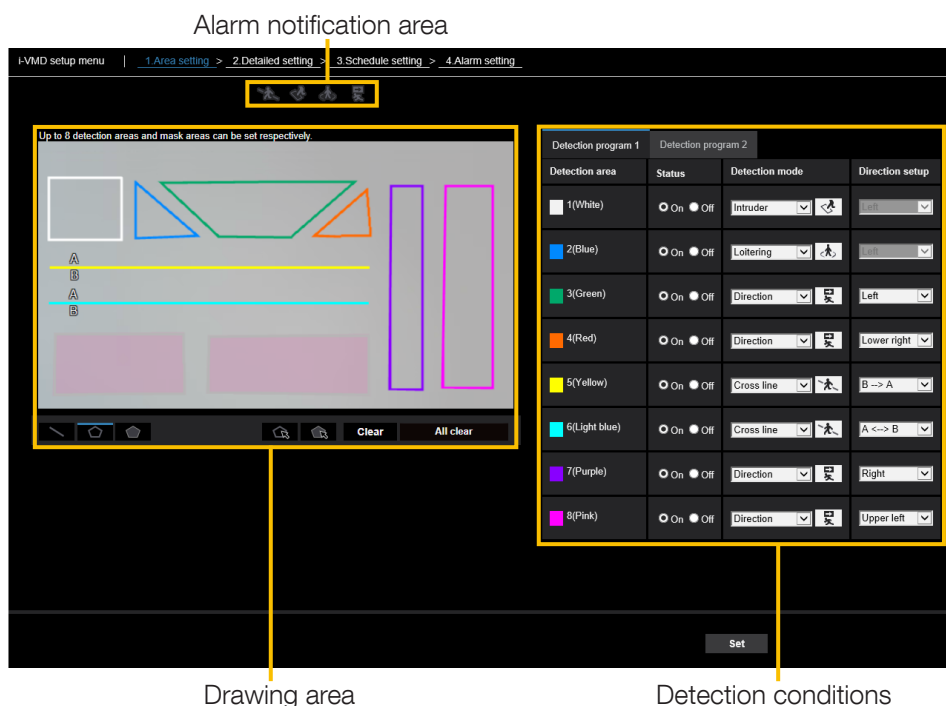
Once this product is installed or the Registration Key is registered, "i-VMD" menu is added to the camera "Setup" menu - "Extension software" page - "Software mng." tab.



Click the "i-VMD" menu or [Setup] to open the "i-VMD setup menu".

On the "i-VMD setup menu" there are four setting menus: "1. Area setting", "2. Detailed setting", "3. Schedule setting", and "4. Alarm setting". When you open the "i-VMD setup menu", "1. Area setting menu" is selected.

Setting menu (with "1. Area setting" selected)



Necessary Setup (continued)

2. Area setting

In this setting, you can set the area and conditions with which i-VMD detects moving bodies.

Select the detection mode from INTRUDER, LOITERING, DIRECTION, and CROSS LINE. Up to 8 detection areas and mask areas can be set respectively. Up to 2 combinations of areas and detection conditions can be set, which can be saved as "Detection program 1" and "Detection program 2".

Alarm notification area



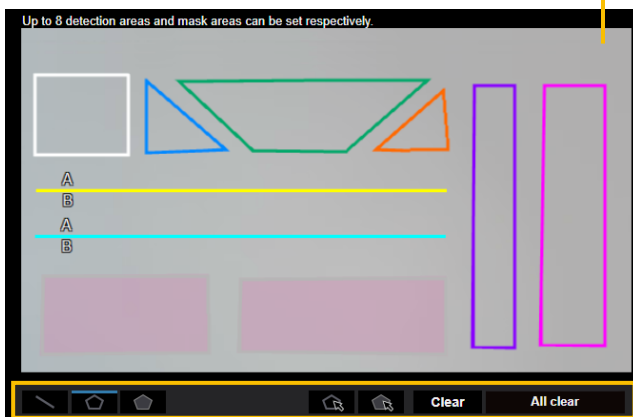
When i-VMD detects moving bodies, the alarm icon and the icons for the four detection modes turn on.

Click the alarm icon to clear the alarm state and turn off all the icons.

-  ALARM ICON
-  CROSS LINE
-  INTRUDER
-  LOITERING
-  DIRECTION

Drawing area (for setting the detection areas)

Camera video screen



Paint type

Camera video screen

You can draw the detection areas or detection lines on this screen.








To start drawing, select either "Detection area (polygon)" icon or "CROSS LINE" icon from "Paint type" according to what you want to draw, and drag it to the "Camera video screen".

An alarm occurs if moving bodies are detected in the detection areas set by drawing.

An alarm also occurs when moving bodies cross the predetermined detection lines.

Paint type

Click the icon to select the drawing shape.

-  CROSS LINE: Draw a detection line for CROSS LINE.
-  Detection area (polygon): Draw a detection area as a polygon (with up to 16 sides).
-  Mask area (polygon): Draw a mask area as a polygon (with up to 16 sides).
-  Detection area (select): Select a detection area (detection line) you have drawn.
-  Mask area (select): Select a mask area you have drawn.
-  Clear: Clear the selected detection area (detection line) or mask area.
-  All clear: Clear all detection areas (detection lines) and mask areas you have drawn.

Note:

- In drawing a detection area (polygon) or a mask area (polygon), you can finish the area setting by selecting the starting point at the end.
- You can change the size, length and shape of detection areas, detection lines or mask areas that you select in "Detection area (select)" or "Mask area (select)" by dragging the corners of the frames or the end points of the lines. Also, you can move them by dragging the inside of frames or lines.
- In clearing detection areas or detection lines, if more than one detection area or detection line is overlapping, clicking the left mouse button in the overlapping areas switches the selected frame in turn.
- Detection frame (☞ page 20) the center of the lower edge is regarded as the position of the detection frame. Set the detection area so that the position of this detection frame is in the detection area.
- You cannot select more than one detection area, detection line, or mask area at the same time.

Necessary Setup (continued)

■ Detection condition setting

Detection program 1		Detection program 2	
Detection area	Status	Detection mode	Direction setup
1(White)	<input type="radio"/> On <input checked="" type="radio"/> Off	Intruder	Left
2(Blue)	<input type="radio"/> On <input checked="" type="radio"/> Off	--Not been set--	Left
3(Green)	<input type="radio"/> On <input checked="" type="radio"/> Off	--Not been set--	Left
4(Red)	<input type="radio"/> On <input checked="" type="radio"/> Off	--Not been set--	Lower right
5(Yellow)	<input type="radio"/> On <input checked="" type="radio"/> Off	--Not been set--	Left
6(Light blue)	<input type="radio"/> On <input checked="" type="radio"/> Off	--Not been set--	Left
7(Purple)	<input type="radio"/> On <input checked="" type="radio"/> Off	--Not been set--	Right
8(Pink)	<input type="radio"/> On <input checked="" type="radio"/> Off	--Not been set--	Upper left

Detection program 1 and Detection program 2

Select "Detection program 1" tab and/or "Detection program 2" tab to set either or both detection conditions. The two conditions can be executed at the same time or separately depending on schedule setting (☞ page 18).

Note:

- In the initial setting of the schedule, Detection program 1 and Detection program 2 are always valid.

Detection area

Up to 8 settings of detection areas and detection lines are distinguished by the color of the drawing lines.

The color of the drawing line shows the order of setting, with "1 (White)" coming first.

Status

Set the status of detection areas.

On : Set the settings of detection areas On.

Off : Set the settings of detection areas Off.

Initial setting : Off

Direction setup

Set the detection direction when the detection mode is "DIRECTION" or "CROSS LINE".

For "DIRECTION", you can select from the 8 directions below.

Upper : Detects upper movement.

Upper right: Detects upper right movement.

Right : Detects rightward movement.

Lower right: Detects lower right movement.

Lower : Detects lower movement.

Lower left : Detects lower left movement.

Left : Detects leftward movement.

Upper left : Detects upper left movement.

Initial setting : Left

For "CROSS LINE", you can select from the 3 directions below.

A → B: Detects movement from A to B.

B → A: Detects movement from B to A.

A ↔ B: Detects movement from A to B or from B to A.

Initial setting: A → B

[Set] button

Click to save the currently displayed contents on the Area setting tab.

Necessary Setup (continued)

Area setting procedure

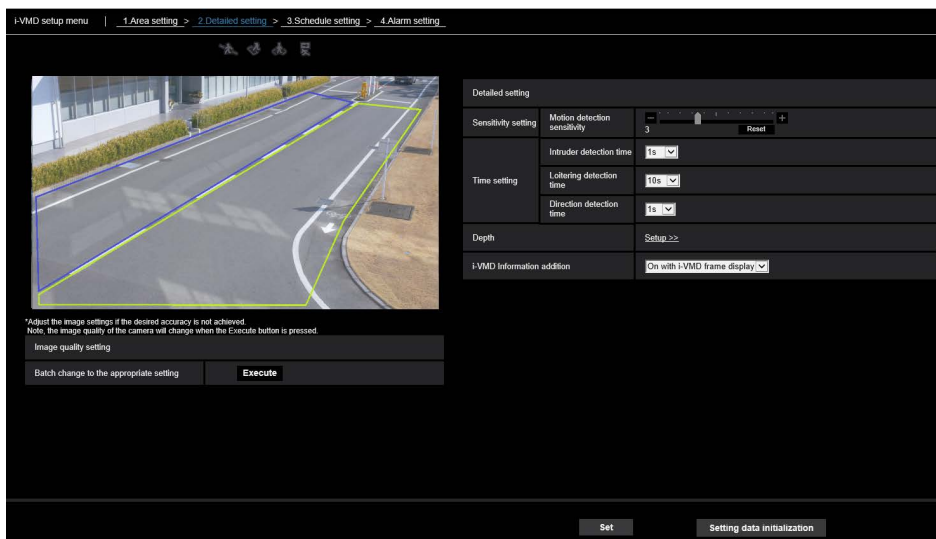
- (1) Make sure that the "1. Area setting" menu is selected.
- (2) Make sure that the "Detection program 1" tab is selected.
- (3) Draw the area for detection (hereinafter referred to as the detection area) in the drawing area.
Draw the area to exclude from detection (hereinafter referred to as the mask area) in the detection area.
You can set 8 detection areas and 8 mask areas respectively.
- (4) For each detection area, select the detection mode from INTRUDER, LOITERING, DIRECTION, and CROSS LINE.
- (5) Set "Direction setup" when the detection mode is "DIRECTION" or "CROSS LINE".
- (6) Click [Set] to save the detection conditions in "Detection program 1".
- (7) Select the "Detection program 2" tab and save the detection conditions in "Detection program 2" according to steps (3) to (6).

Necessary Setup (continued)

3. Detailed setting (as necessary)

To set the detection sensitivity, detection time, and the size of moving bodies to detect with i-VMD. Click [2. Detailed setting] at the upper part of the screen to open the "Detailed setting" menu.

■ Detailed setting



Batch change to the appropriate setting

Click [Execute] to automatically set the appropriate image quality for i-VMD in a batch.

The items changed in the batch setting are the following.

- Super Dynamic : Off
- Light control speed : 8
- White balance adjustment speed : 8
- Digital noise reduction : 128
- Intelligent auto : Off
- Auto contrast adjust : Off

Important

- If you select values larger than "Max. 1/30s" on [Image adjust] - [Light control mode] - [Maximum shutter], there may be loss of recognizability.

Sensitivity setting

Set the sensitivity of i-VMD. This setting applies to all detection conditions.

[Motion detection sensitivity]

Set moving bodies detection sensitivity. Higher values lead to more probability of detection, but more false detection occurs.

1 (low) - 7 (high)

Time setting

Set how long it takes until an alarm occurs after detection.

[Intruder detection time]

Set how long it takes until an alarm occurs after detection of intrusion.

0.2 s, 0.4 s, 1 s, 2 s, 3 s, 4 s, 5 s, 10 s

Initial setting: 1 s

[Loitering detection time]

Set how long it takes until an alarm occurs after detection of loitering.

10 s, 20 s, 30 s, 1 min, 2 min

Initial setting: 10 s

[Direction detection time]

Set how long a moving body needs to keep moving until an alarm occurs.

1 s, 2 s, 3 s, 4 s, 5 s, 10 s

Initial setting: 1 s

Note:

- Depending on the movement of moving bodies and other factors, the time it takes for an alarm occurs may be longer than the setting.

Necessary Setup (continued)

Depth

Set depth as necessary. You may suppress false alarm. The depth setting applies to both Detection program 1 and Detection program 2.

Click [Setup >>] to display the "Depth setting" menu.

■ Depth setting

Depth setting method



Select the depth setting method.

On: Set depth manually to the camera.

Off: Depth is not set.

Initial setting: Off

Example with "Depth setting" set to "On"

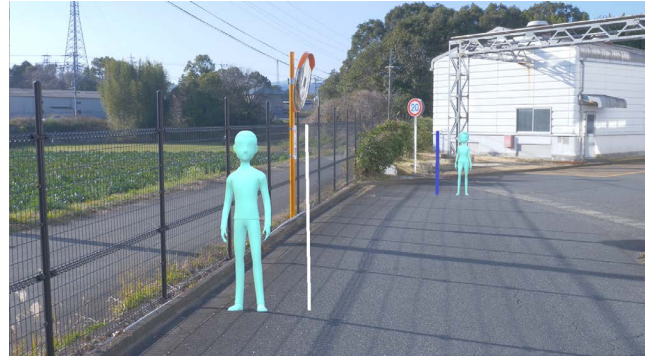
Depth setting		On
Marker 1	Photographic subject size	160 cm(100-200cm) *160cm = 63inch
	Clear	
Marker 2	Photographic subject size	160 cm(100-200cm) *160cm = 63inch
	Clear	
Size setting		
Max. size		300 %
Min. size		50 %

■ Setting procedure

Draw marker 1 and marker 2 in two positions in the drawing area.

Then, enter each "Photographic subject size" for marker 1 and marker 2.

Click [Clear] to clear the drawn marker.





Example of depth setting

Note:

- Enter the "Photographic subject size" (height) between 100 cm and 200 cm. Also, draw straight line markers where the actual heights occupy.
- Draw the markers at two distant positions in the drawing area, one in front and one in the back. If the two markers are close together, depth may not be set properly.

When "Depth setting" is "Off"

Depth setting		Off
Size setting		
Max. size		300 %
Min. size		50 %

There is no depth setting.

Note:

- If you often cannot detect moving bodies with "On", you may be able to improve that by selecting "Off".

Size setting

Only the moving bodies detected with sizes between the maximum and the minimum sizes trigger alarms.

Max. size

Set the maximum size of moving bodies to detect. Set the size of humans against the photographic subject set in "Depth setting".

100%, 150%, 200%, 250%, 300%, Unlimited

Initial setting: 300%

Necessary Setup (continued)

Min. size

Set the minimum size of moving bodies to detect. Set the size of humans against the photographic subject set in "Depth setting".

10%, 20%, 30%, 40%, 50%, 60%, 70%, 80%, 90%

Initial setting: 50%

i-VMD information addition

Set whether to add i-VMD information (detection frames) to the video data and whether to display detection frames or loci in the live video in the web browser.

If you set it to "On with i-VMD frame display", a blue frame is displayed to highlight the moving body detected on the screen. The color of the frame turns red when the detected moving body intrudes the detection area and triggers an alarm. Also, the locus of the detected moving body is displayed in green. The locus for about the last 3 seconds is displayed.

The setting of i-VMD information addition does not affect the operation of alarms.

Off: i-VMD information is not added. Neither detection frames nor loci are displayed.

On: i-VMD information is added, but detection frames and loci are not displayed.

On (with i-VMD frame display):

i-VMD information is added, and detection frames and loci are displayed.

Initial setting: On (with i-VMD frame display)

[Set]

Click to save the currently displayed contents on the Detailed setting tab.

[Setting data initialization]

Click to reset all the settings of i-VMD.

Necessary Setup (continued)

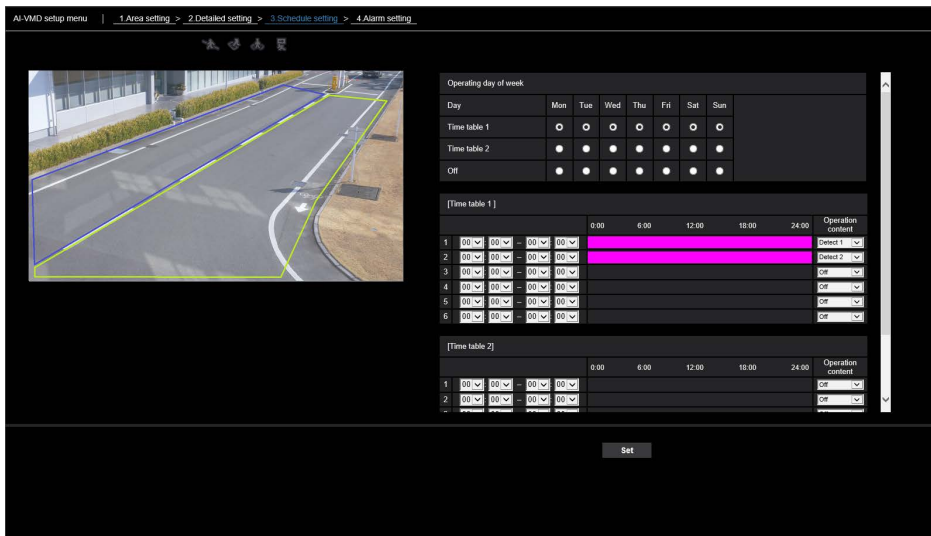
4. Schedule setting

Set the operation schedule of i-VMD.

The schedules of "Detection program 1" and "Detection program 2" can overlap.

Click [3. Schedule setting] at the upper part of the screen to open the "Schedule setting" menu.

■ Schedule setting



Operating day of week

Set the days of the week to operate i-VMD.

For each of "Time table 1" and "Time table 2", select the days of the week to operate. If you set a day of the week to "Off", the selected day will not work.

Time table 1: Mon, Tue, Wed, Thu, Fri, Sat, Sun

Time table 2: Mon, Tue, Wed, Thu, Fri, Sat, Sun

Off : Mon, Tue, Wed, Thu, Fri, Sat, Sun

Initial setting: Time table 1 is selected from Mon to Sun.

[Time table 1], [Time table 2]

Set the time and content of operating i-VMD.

You can set up to 6 operation times to each of [Time table 1] and [Time table 2].

You can set the time of operation on the days selected in "Operating day of week".

[Time]

Configurable time: 00:00-23:59 (24-hour notation)

Initial setting: 00:00-00:00

Note:

- If you set 00:00 in the right column of the time range, it means 24:00.

[Operation content]

Select the detection setting in operating i-VMD.

Off : Does not operate i-VMD.

Detection program 1: Operates under the conditions in Detection program 1.

Detection program 2: Operates under the conditions in Detection program 2.

Initial setting: •Time 1 : Detection program 1

•Time 2 : Detection program 2

•Time 3 - Time 6: Off

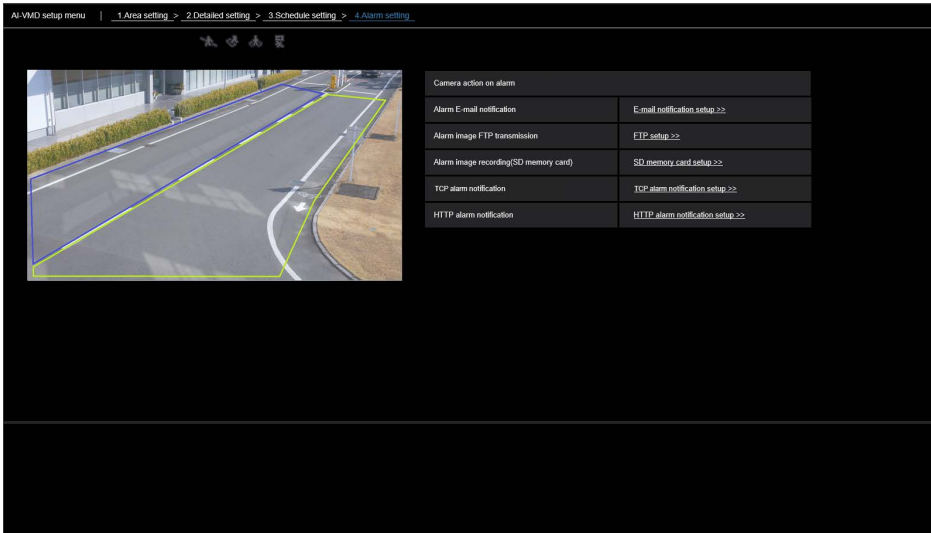
Necessary Setup (continued)

5. Alarm setting

For the basic setting procedure for TCP alarm notification and other alarm setting procedures, refer to the Operating Instructions of the camera.

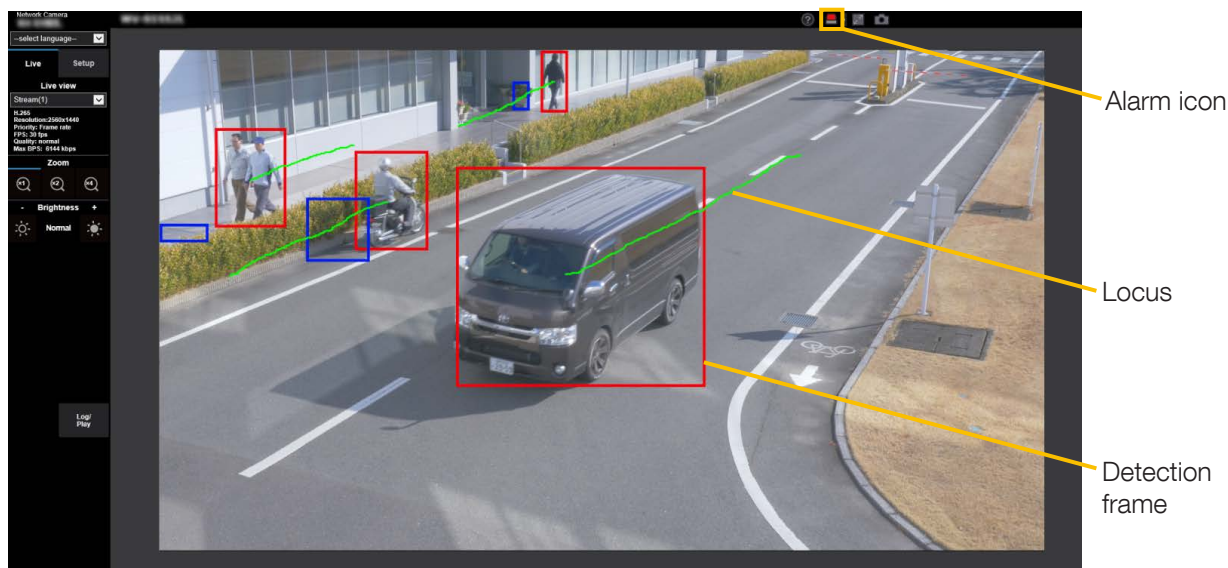
Click [4. Alarm setting] at the upper part of the screen to open the "Alarm setting" menu.

■ Alarm setting



Operation

Once you have finished the necessary settings, open the web browser of the camera to display the video and start operation.



Alarm icon

The alarm icon turns on when i-VMD detects a moving body.

Click [>] to the right of the icon to display the alarm status for each detection mode.



-  ALARM ICON
-  CROSS LINE
-  INTRUDER
-  LOITERING
-  DIRECTION

A red frame is added to the icon of the corresponding detection mode when an alarm occurs. In addition, the details of the alarm are described to the right of the icon. Click [<] to hide the icon for each detection mode.

Clicking the alarm icon during an alarm resets all alarms.

Note:

- The alarm icon also turns on when an alarm input or a command alarm is received at a terminal alarm.

Detection frame (red frame, blue frame)

When a moving body is detected, a blue frame appears around the body. When the detected moving body intrudes into the detection area and triggers an alarm, a red frame appears around the body.

The frame display can be turned On/Off from the "i-VMD information addition" setting.

Locus

The locus of the alarm frame (red frame) is displayed in green. The locus for about the last 3 seconds is displayed. It is displayed when the alarm frame (red frame) is set to be displayed in the settings of "i-VMD Information addition".

Important

- Even if [Basic] - [Status update mode] in the camera setup menu is set to "Real time", the alarm notification may be delayed due to the network environment.
- If you change [Image/Audio] - [Image capture mode] or [Basic] - [Image rotation] in the camera setup menu after setting the detection areas of i-VMD, then the detection areas, mask areas, and the depth may be shifted or initialized. After changing [Image capture mode] or [Image rotation], check the detection area setting, mask area setting, and depth setting again.
- If you change the zoom setting after setting the detection areas of i-VMD, the detection areas and the mask areas may be shifted. After changing the zoom setting, check the detection area setting, mask area setting, and depth settings again.

i-PRO Co., Ltd.

<https://www.i-pro.com/>