

Panasonic Security System Configuration Tool (PSSCT)

Operating Instructions

Before attempting to connect or operate this product, please read these instructions carefully and save this manual for future use.

No model number suffix is shown in this Operating Instructions.

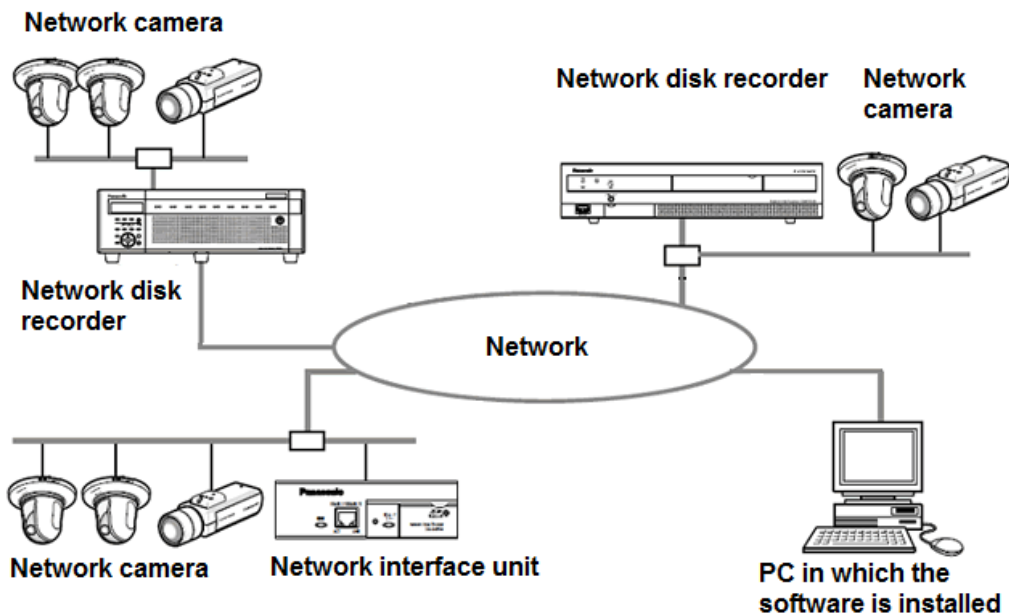
Preface

Panasonic Security System Configuration Tool (PSSCT) is the software that is designed to configure the settings of network disk recorders, network interface units (encoders) and network cameras using a PC via a network.

This software is assumed to be used by system design and network management experts.

Refer to the provided "Available function list for each compatible device" (PDF file) about the compatible devices.

System configuration diagram



About these operating instructions

These operating instructions provide instructions of how to install this software and of how to configure the settings of each devices using this software.

Descriptions in the following pages are based on the assumption that Microsoft® Windows® 7 Professional. Operation windows may not be the same as those appearing on the pages when a different OS is used or different settings are applied. In addition, please note that the screens described in this instructions uses the conventional version within the scope of the explanation.

When using other OS, refer to the operating instructions of the respective OS.

System requirements for a PC

It is recommended to install this software on a PC that meets the following system requirements.

Note:

- Microsoft® .NET Framework 4.6 is required to run this software.

.....

OS ^{*1}	Microsoft® Windows® 10 Pro (32-bit) ^{*3} Microsoft® Windows® 10 Pro (64-bit) ^{*2, *3} Microsoft® Windows® 8.1 Pro (32-bit) Microsoft® Windows® 8.1 Pro (64-bit) ^{*2}
CPU	Intel® Core™ i5 2.5 GHz or faster
Memory	1 GB or more
Required hard disk space	50 MB of disk space is necessary for installation of this software. Microsoft® .NET Framework 4.6 and Microsoft® Visual C++ Redistributable Packages for Visual Studio 2013 are required to run this software. When they are not installed on a PC, additional 4.5 GB of disk space is necessary for installation.
Monitor	1280 x 800 pixels or more 24-bit True color or better
Network interface	10/100 Mbps Network interface card must be installed ^{*4} .

- *1: This software is designed based on the default style or the font size of Microsoft® Windows® 8.1 and Microsoft® Windows® 10. It is not recommended to change the display style or the font size smaller-100% from the default. When the display style or the font size is changed from the default, it may be possible that the layout of this software collapses. If this software is not displayed correctly, change the font size to Small-100%.
- *2: The network settings on the PC must meet those of the network environment where the PC is connected.
- *3: Supports “Desktop Mode” only.
- *4: Operates in WOW64 (32-bit mode).

Important:

- This software must be installed or started by an administrator of the PC. Otherwise, any problems will not be covered by the warranty.
- Do not use other applications, especially heavy load types, while this software is running. Otherwise, the CPU overload and the shortage of resources will cause malfunction and insufficient performance. In order to avoid the conflict, please do not launch at the same time with the following software.
EasyIpSetup (included Camera’s CD-ROM)
WV-ASM100, WV-ASM200, WV-ASM300
- Enter 1-byte alphanumeric characters for user names. If 2-byte characters are included, installation may fail.

Trademarks and registered trademarks

- Adobe and Reader are either registered trademarks or trademarks of Adobe Systems Incorporated in the United States and/or other countries.
- Microsoft, Windows, Internet Explorer, ActiveX and DirectX are either registered trademarks or trademarks of Microsoft Corporation in the United States and other countries.
- Intel and Core i5 are trademarks or registered trademarks of Intel Corporation or its subsidiaries in the United States and other countries.
- Other names of companies and products contained in these operating instructions may be trademarks or registered trademarks of their respective owners.

Abbreviations

- These are descriptions of the basic terms used in these operating instructions.
- Microsoft® Windows® 8.1 Pro (32-bit) and Microsoft® Windows® 8.1 Pro (64-bit) are described as Windows 8.1.
- Microsoft® Windows® 10 Pro (32-bit) and Microsoft® Windows® 10 Pro (64-bit) are described as Windows 10.

Copyright

- Except for open source software licensed under GPL/LGPL and so on, distributing, copying, disassembling, reverse compiling, reverse engineering, and also exporting in violation of export laws of the software provided with this product, are all expressly prohibited.

Disclaimer of warranty

IN NO EVENT SHALL MATSUSHITA ELECTRIC INDUSTRIAL CO., LTD. BE LIABLE TO ANY PARTY OR ANY PERSON, EXCEPT FOR REPLACEMENT OR REASONABLE MAINTENANCE OF THE PRODUCT, FOR THE CASES, INCLUDING BUT NOT LIMITED TO BELOW:

- (1) ANY DAMAGE AND LOSS, INCLUDING WITHOUT LIMITATION, DIRECT OR INDIRECT, SPECIAL, CONSEQUENTIAL OR EXEMPLARY, ARISING OUT OF OR RELATING TO THE PRODUCT;
- (2) PERSONAL INJURY OR ANY DAMAGE CAUSED BY INAPPROPRIATE USE OR NEGLIGENT OPERATION OF THE USER;
- (3) UNAUTHORIZED DISASSEMBLE, REPAIR OR MODIFICATION OF THE PRODUCT BY THE USER;
- (4) ANY PROBLEM, CONSEQUENTIAL INCONVENIENCE, OR LOSS OR DAMAGE, ARISING OUT OF THE SYSTEM COMBINED BY THE DEVICES OF THIRD PARTY;

Open Source Software

This product contains open source software as follows.

Software name	Copyright	License
System.Data.SQLite	System.Data.SQLite	MS-PL

The full text of the corresponding license terms is below.

Microsoft Public License (MS-PL)

This license governs use of the accompanying software. If you use the software, you accept this license. If you do not accept the license, do not use the software.

1. Definitions

The terms "reproduce," "reproduction," "derivative works," and "distribution" have the same meaning here as under U.S. copyright law.

A "contribution" is the original software, or any additions or changes to the software.

A "contributor" is any person that distributes its contribution under this license.

"Licensed patents" are a contributor's patent claims that read directly on its contribution.

2. Grant of Rights

(A) Copyright Grant- Subject to the terms of this license, including the license conditions and limitations in section 3, each contributor grants you a non-exclusive, worldwide, royalty-free copyright license to reproduce its contribution, prepare derivative works of its contribution, and distribute its contribution or any derivative works that you create.

(B) Patent Grant- Subject to the terms of this license, including the license conditions and limitations in section 3, each contributor grants you a non-exclusive, worldwide, royalty-free license under its licensed patents to make, have made, use, sell, offer for sale, import, and/or otherwise dispose of its contribution in the software or derivative works of the contribution in the software.

3. Conditions and Limitations

(A) No Trademark License- This license does not grant you rights to use any contributors' name, logo, or trademarks.

(B) If you bring a patent claim against any contributor over patents that you claim are infringed by the software, your patent license from such contributor to the software ends automatically.

(C) If you distribute any portion of the software, you must retain all copyright, patent, trademark, and attribution notices that are present in the software.

(D) If you distribute any portion of the software in source code form, you may do so only under this license by including a complete copy of this license with your distribution. If you distribute any portion of the software in compiled or object code form, you may only do so under a license that complies with this license.

(E) The software is licensed "as-is." You bear the risk of using it. The contributors give no express warranties, guarantees or conditions. You may have additional consumer rights under your local laws which this license cannot change. To the extent permitted under your local laws, the contributors exclude the implied warranties of merchantability, fitness for a particular purpose and non-infringement.

Network Security

As you will use this product connected to a network, your attention is called to the following security risks.

- (1) Leakage or theft of information through this product
- (2) Use of this product for illegal operations by persons with malicious intent
- (3) Interference with or stoppage of this product by persons with malicious intent

It is your responsibility to take precautions such as those described below to protect yourself against the above network security risks.

- Use this product in a network secured by a firewall, etc.
- If this product is connected to a network that includes PCs, make sure that the system is not infected by computer viruses or other malicious entities (using a regularly upgraded anti-virus program, anti-spyware program, etc.).
- Protect your network against unauthorized access by restricting users to those who log in with an authorized user name and password.
- Apply measures such as user authentication to protect your network against leakage or theft of information, including image data, authentication information (user names and passwords), alarm mail information, FTP server information.

Contents

Preface.....	1
System configuration diagram	1
About these operating instructions	2
System requirements for a PC	2
Trademarks and registered trademarks.....	3
Abbreviations.....	3
Copyright.....	4
Disclaimer of warranty	4
Open Source Software.....	4
Network Security	5
Contents.....	6
Preparation.....	7
Installation.....	7
Uninstallation.....	8
Connections	8
Launch the software	9
Option Screen (Setting of this tool)	11
Description.....	12
About the operation menu (toolbar)	12
Configure Devices.....	13
Meaning of Icons.....	19
Download Configuration Files and Log Files from Devices	20
Upload Configuration Files to Devices.....	21
Upgrade Firmware.....	23
Configure Recorders.....	26
Recorder Configuration File editor	27
Change Login User	28
Refer to the Manual	29
Other	30
Troubleshooting.....	30
For old camera and old recorder users.....	33
Cautions when using the software.....	34

Preparation

Installation

Install this software by following the message in the dialog box.

Important:

- Do not edit, delete and move the files copied upon installation. Otherwise, this software may not work correctly.

1 **Contact your dealer and download the software onto a PC.**

2 **Double-click "setup.exe".**

The confirmation window will be displayed.

3 **Click [OK] button.**

Follow the instructions of the wizard to complete the installation.

When starting installation after selecting the standard installation, a new folder will be created and the files of this software will be copied in the created folder.

(The directory path is "C:\Program Files\Panasonic\AdminConsole2" or "C:\Users\"User Name\AppData\Local\Apps\Panasonic\AdminConsole2".)

When the installation is completed, the program will be added to the "start" menu.

Uninstallation

Uninstall this software as follows.

- 1** Click the **"Programs and Features"** icon in **"Control Panel"**.
The "Programs and Features" window will be displayed.
- 2** Select **"Panasonic Security System Configuration Tool (PSSCT2)"**, and then click **[Uninstall]** button.
Uninstall the program by following instructions.

Connections

Connect PCs and devices.

Refer to the operating instructions of each device in use for how to connect them.

Launch the software

Launch this software to configure the device settings after connecting a PC and devices. The following instructions begin from the screen displayed just after the PC is booted.

- 1 Select "PSSCT" from "start" menu**
("Start" - "All Programs" - "Panasonic" - "Panasonic Security System Configuration Tool (PSSCT2)" - "Panasonic Security System Configuration Tool (PSSCT2)").

This software will be launched, and then the login window will be displayed.



Important:

- Do not edit, delete and move the files copied upon installation. Otherwise, this software may not work correctly.

- 2 (2-1: When using this software for the first time) Initial user name and password settings.**

First of all, please set user name and password to use this software.

Important:

- Available "symbols" are as follows (common to both username and password field).
! # \$ % () * + , . / < > ? @ [] ^ _ ` { | } ~
- The username and password set here are necessary for next startup of this software, so please keep it so as not to forget.

- (2-2: When using for the second time or more) Enter registered user name and password and press [OK] to launch.**

Enter the user name and password correctly in the initial startup (see step 2-1).

Important:

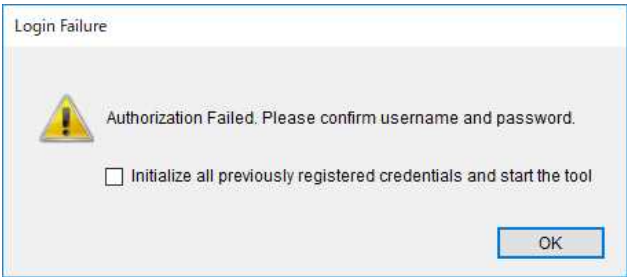
- To ensure the security, change from the default user name and password. It is also recommended to change them periodically.

If the login authentication fails three or more consecutive times, the option "Initialize all previously registered credentials and start the tool" is displayed. (see right figure)

If you cannot remember the authentication information, by checking this option and pressing [OK], you can recall the state after initial installation and execute step 2-1 again.

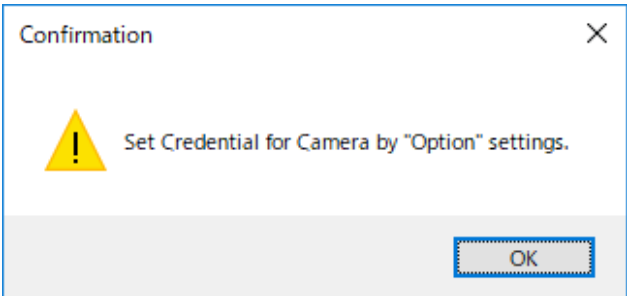
Important:

- In the case of initializing the activation authentication information by using this option, the "communication credential information with the device" held in this software is reset to the initial state after the software installation at the same time.
- If startup authentication has failed ten times consecutively, it will suspend the startup of this tool once for security. Please start again.



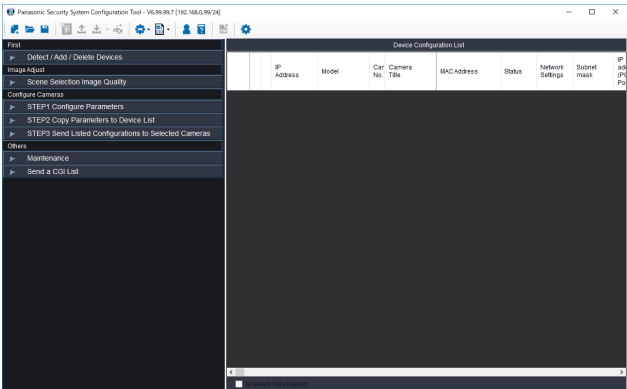
Note:

- When this tool is launched for the first time, confirmation window will be appeared. Click [OK] and set the credentials required for communication with each device. (Refer to page 11)



3 Display of device operation screen

If login is successful, the device operation screen is will be displayed.
To quit operation of this software and exit, click [×] button at the top right of the setup page.



Option Screen (Setting of this tool)

Option

Item tab

Detection Credentials Communication Save in Display Size General

Detection Period
Enter period time for detecting devices.
If some devices are failed to detect, please extend Search time, and then try again.

5 sec (5-30)

PING before Access Devices
☒ To confirm availability of the devices by sending PING command prior to sequential communication.
(Please turn this checkbox off when using on a network where the PING command is prohibited.)

To detect ND400
☐ To detect ND400 by sending PING.

ND400 searching range (start, end)

192 168 0 240 ~
192 168 0 254

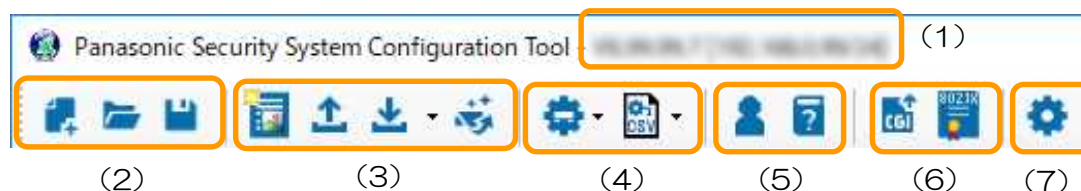
OK Cancel















Item tab	Description
Detection	<ul style="list-style-type: none"> • Period of "Detection time" to detect devices • Control for "PING before access devices" • Configuration of ND400 detection
Credentials	Credentials ("User name" and "Password") of Device Communication. The setting fields are separated to device categories.
Communication	<ul style="list-style-type: none"> • Number of Operations In case of failure to communicate devices for the reason of lack of bandwidth, decrease this number. • Network Adapter Selection
Save	Select a location to save download camera configuration files and change report.
Display	Select items to display on Camera Configuration List.
Size	JPEG snapshot acquisition / input field for Image View Report cover settings.
Upload Configuration Files	Settings relating to Upload Configuration Files
General	<ul style="list-style-type: none"> • Language Setting (Settings will be reflected after the next startup.) • Browser Selection Setting • Launcher screen setting (Settings will be reflected after the next startup.)

Description

About the operation menu (toolbar)

At the top of the device operation screen, a tool bar for setting the device and/or setting this tool is shown. For the item (3) and item (6), the operation will be applied on the device for which the check box is enabled (ON) on the device list.



No.	Item	Description
(1)	Version and IP address	Version of this software and IP address information of this PC.
(2)		To create new device configuration list. The information of the device configuration list that has already been created is discarded.
		To load device configuration list file.
		To save the current device list and/or setting menu information.
(3)		[Image View Reporting Wizard] Acquires the current image from the target cameras automatically and generate the "Image View Report". (XPS format [*.xps] and/or Excel 2010 or later compatible format [*.xlsx]). This function is useful for creating work record documents, etc.
		[Upload Configuration Files] Upload Configuration Files to target devices.
		[Download Configuration & Log Files] Download the setting data, the log and the captured still image of the target devices.
		[Upgrade Software] Upgrade firmware of target devices.
(4)		To support creating and/or editing Recorder Configuration File
		To Convert Recorder Configuration File into text data.
(5)		[Change Login User] Change the username and password for login this software.
		This manual will be displayed.
(6)		[Send CGI list] Send the pre-edited CGI list to the target devices. For the "CGI list" sample file, please refer to "sample.txt" in package.
		Configure the camera's 802.1x settings (User name / Password setting and CA certificate installation operation). Please refer to the operating instructions of the device in use for information about each setting item.
(7)		Option Screen (Setting of this tool) [Please refer to page 11.]

Configure Devices

Important:

- The "Windows Security Alert" window may be displayed when this software is launched. In this case, click the "Unblock" button on the displayed "Windows Security Alert" window.
- For security enhancement, the MAC address and the IP address of the connected device will disappear configuration of the settings will become unavailable when 20 minutes have passed after turning on the power of it.
- Wait for a while until device configuration changes are completed.
- This software may fail to connect the device while the target device is in operation. In this case, please stop the operation of the device and try reconnecting.
- For detailed information of the setting item, please refer to the operating instructions of the each device.
- When saved device list file has been edited by other tools, it may fail to re-read.
- Do not access concurrently to the same device from multiple PCs using this software. Otherwise, device errors may occur.
- When using a firewall (including software), please make sure all of the UDP ports set allowed.

1 <First>Detect / Add / Delete Devices


"Create Device Configuration List" group

[Detect]

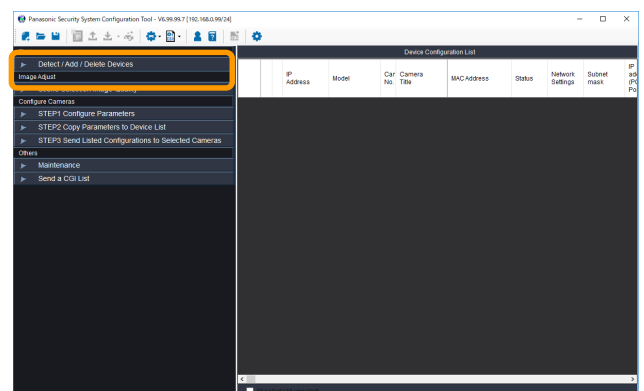
To detect devices on network to update Device Configuration List automatically.

If some devices are failed to detect, please extend detect time, and then try again.

Note:

- In case of device detection failure;
 1. Reboot Devices.
 2. Confirm the power supply, connection status to the network switch.
 3. Click [Detect] button again.
- For the devices in HTTPS communication, an icon  will be shown at the side of model number.

.....



[Add]

By clicking the [Add] button, it is possible to (1) Automatically detect target devices operating on other network segment, or (2) Manually add devices in offline state.

(1) Automatic detection of target device by specifying IP range

It detects devices operating in the specified IP address range, including those on other network segments.

Important:

- The PING command must be available on the network path to the target device.
- The number of segment connections (hops) to the target device must be 3 or less.
- Please specify the address range as narrow as possible. If you specify a wider range than necessary, detection takes more time.

The screenshot shows a dialog box titled 'Add' with three main sections, each highlighted with a yellow box and a numbered label in the top right corner.

- (1) Automatic detection:** Contains a radio button, a text area for IP range with an example '192.168.0.*', and a note about segment connections.
- (2) Manual addition:** Contains a radio button, a 'Model' dropdown menu (showing 'S1132'), and two input fields for 'IP address(Start)' and 'IP address(End)'.
- (3) Communication settings:** Contains two columns. The left column has 'User name' and 'Password' input fields. The right column has 'Protocol / Port Number' with radio buttons for 'HTTP: 80' and 'HTTPS: 443'.

At the bottom are 'Set' and 'Cancel' buttons.

(2) Manually add offline status devices

You can add the off-line devices manually to the device configuration list by specifying the model number and IP address of the device. Please set the following items.

- Model name
- Range of IP address (Start, End)

If there is only one device, specification in the "End" column can be omitted.

(3) Communication settings with the device

It is common settings to both (1) and (2). Please set the following items.

- Credentials (User name / Password)
(Credential of the login to access devices)
- Protocol (HTTP/HTTPS) and its port number

[Del]

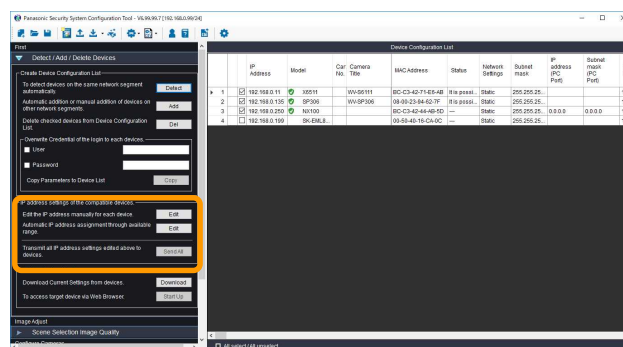
The registered camera will be deleted from the device configuration list.

2 “IP address settings” group [Edit]

To edit settings of IP addresses menu will be displayed. Configure the Network setting according to your need.

[Send All]

IP addresses edited above procedure will be sent to the devices.

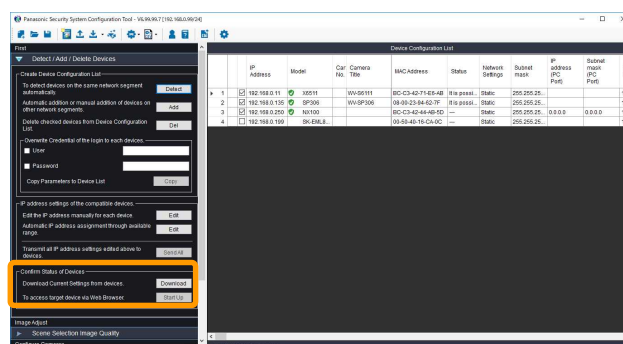


3 “Confirm Status of devices” group [Download]

To download current settings from connected devices and update on Device Configuration List.

[Start Up]

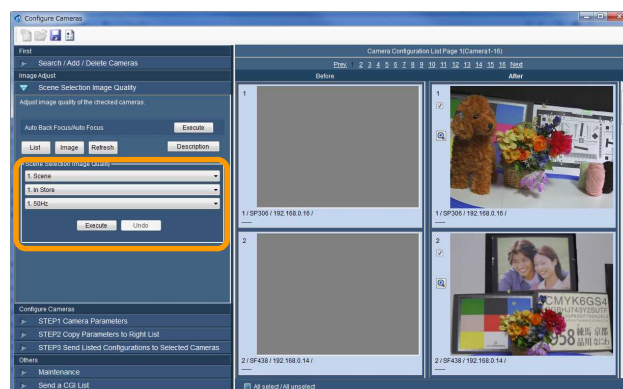
To access the checked device via web browser. Alternatively, it is possible to start web browser by right-clicking and select [Browser] menu on target device in the Device Configuration List.



4 <Image Adjust>Scene Selection Image Quality

Configure the settings relating to image quality from the following.

- The image of the location where the camera is in use (Scene Selection).
- The image being monitored (Image Adjust).



[Execute] / [Undo]

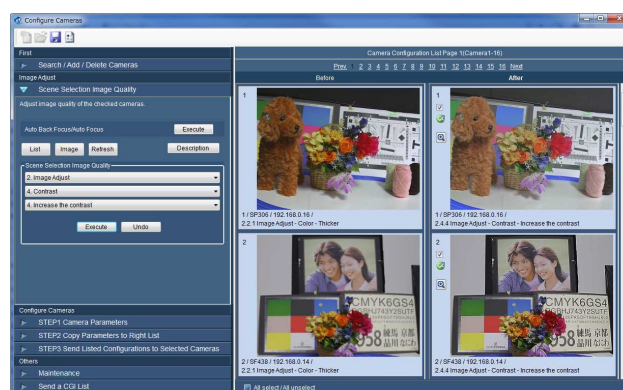
Selected cameras configuration changes will start.

When configuration changes are completed,

“Before-After (Result)” images will be shown.

[Magnifying glass] icon

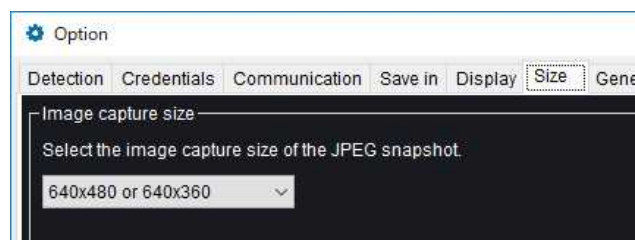
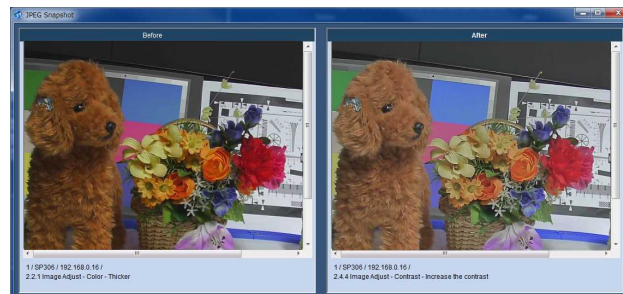
Selected camera images will be enlarged.



Note:

JPEG snapshot size is selectable by [Option] -
[Size] setting menu.

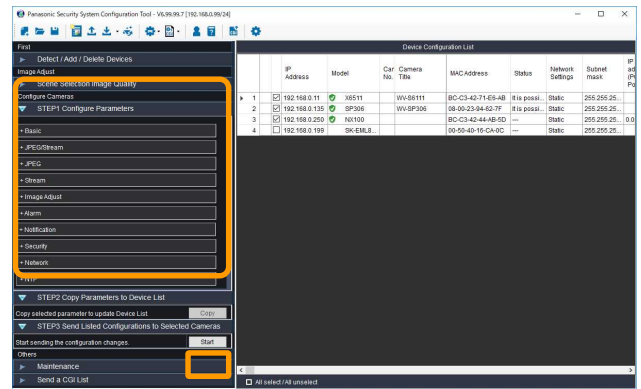
.....



5 [Configure Cameras]

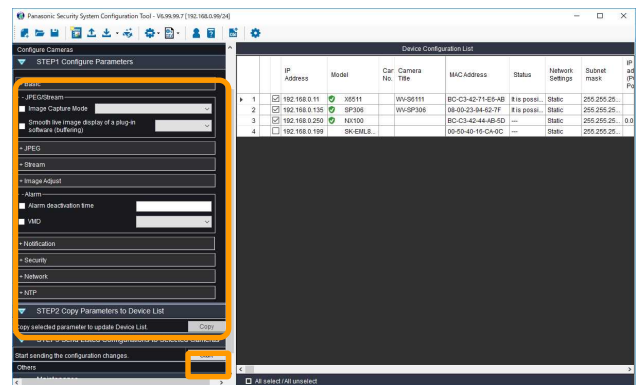
STEP1 Configure Parameters.

When these menu labels are clicked, the selected menu will be displayed in this area.



STEP2 Copy Parameters to Device List.

When [Copy] button is clicked, checked parameters are copied to checked cameras on Device Configuration List. Copied parameters shown by bold fonts.



Note:

- When failed copy parameters copy failed to the list, display a message window. Correct the items according to the message.
- Refer to the operating instructions of the device in use for information about each setting item.
- When the Super Dynamic is set to On for WV-X4170, WV-X4171 and WV-X4571L series, the wide dynamic range is set to On.

.....

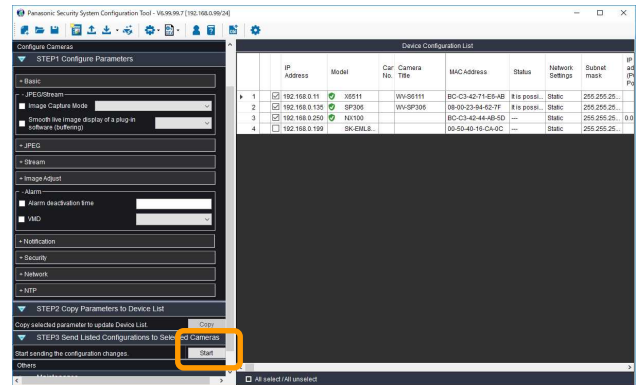
STEP3 Send Listed Configurations to Selected Cameras.

When [Start] button is clicked, selected cameras configuration changes will start. Wait for a while.

When configuration changes are completed, a dialog box will be displayed.

Note:

- Depending on the combination of items to be set, all settings may not be accepted by the camera with one transmission. In this case, please send the settings again.

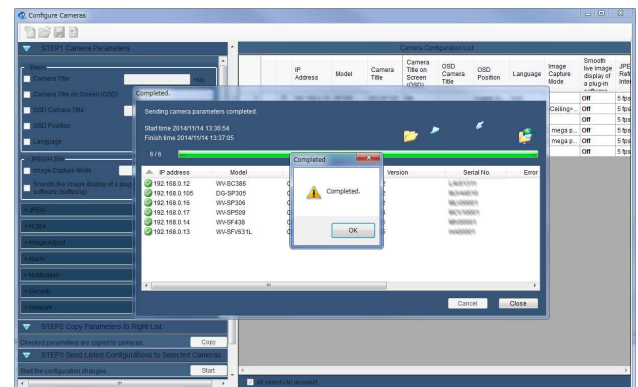


Complete the upload.

Click [OK] button.

Note:








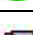



- Camera configuration files and setup report will be saved automatically. The location will be changed by [Options] menu.
- The saved settings (Camera Parameters) can be opened by clicking [Open] button.
- Click [Save] button to save the settings of Camera Parameters.



Note:

- About using the XPS format: If you install Windows 10 version 1803 or later on a new device (or as a clean installation), you may need to install XPS Viewer from Apps and Features in the Settings app or through Features on Demand. For detail, please refer to Microsoft official support page.

Meaning of Icons

Item	Description	
Common to Communications		Waiting order to start communication with target device.
		Communication with target device is in progress.
		Communication with the target device successfully.
		Communication with the target device failed.
Administrator Registration Status		Administrator is <u>already registered</u> devices.
		Administrator is <u>not registered</u> devices.
		Administrator state unknown devices. (Uncommunicated device)
Configure Cameras		Successfully set the target camera.
		There were items not accepted by the target camera in the settings. (Please check the compatibility of the target camera model and firmware.)
Maintenance		Maintenance setting and/or transmission of the CGI list to the target device successfully.
Failover		The operation is currently running in the failover mode.
Communication Status		Devices under <u>HTTPS</u> communication status. (There is no icon for HTTP communication status)

Download Configuration Files and Log Files from Devices

Important:

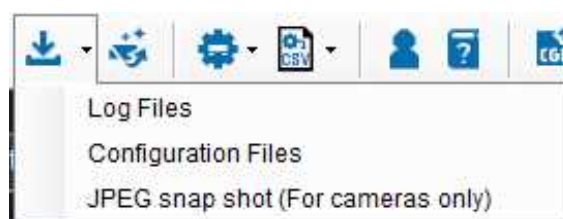
- Wait until the download completes.
- This software may fail to connect the device when the destination device is in operation.

1 Click [Download Configuration & Log Files] button.

The selection page will be displayed.

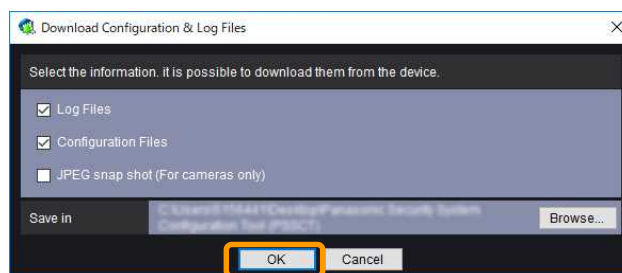
Note:

- By pressing the ▼ section to the right of the icon, you can directly call the function directly without doing the next section 2 operation.
-



2 Start downloading.

When [Start] button is clicked, the information page will be displayed. Select the download information and click [OK] button, and then downloading will start.

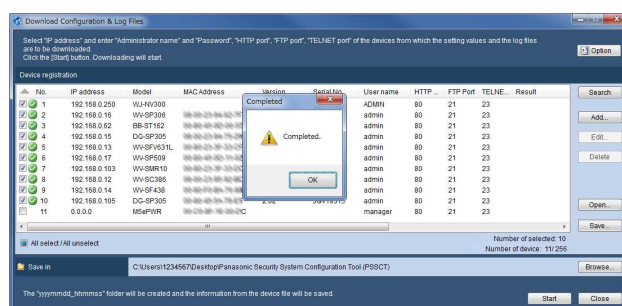


3 Complete the download.

When the operation is completed, the dialog box will be displayed. Click [OK] button.

Note:

- The Log list will be saved in the downloading folder created by this software.
-



Upload Configuration Files to Devices

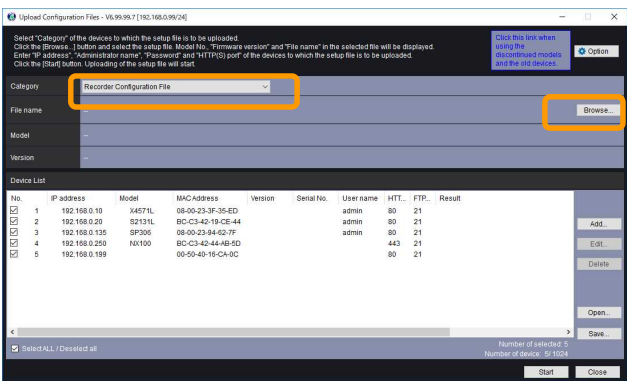
Important:

- Wait for a while until the upload completes.
- When the saved setup file is edited such by text edit software, uploading it to the device will become impossible.
- Do not access concurrently to the same device from multiple PCs using this software. Otherwise, device errors may occur.
- It is impossible to upload the setup file when the destination device is in operation.

1 Click [Upload Configuration Files] button.
The selection page will be displayed.



2 Display information of the setup file
Click [Browse...] button after selecting "Category" of the device to which the setup file is to be uploaded.
Select the setup file on the "Open file" page.
The file name, model number and version of the selected setup file will be displayed.



Note:

When uploading the configuration files, select the file according to the devices. Refer to the provided “Available function list for each compatible device (PDF file)” about the selecting files.

.....

3 Register additional devices as needed.

By clicking the [Add] button, you can add devices that are not on the device list. The registration screen shown on the right is displayed. Set the following items for the target device.

- Range of IP address (Start, End)
- Credentials (User name / Password)
- HTTP / HTTPS port number
- FTP port number

Note:

- *1 To upload the downloaded file to the other camera, the following steps is recommend:
The same Administrator User name & Password are set to each camera.

.....

The 'Add' dialog box is titled 'Please set configurations of the device to be added.' It contains several input fields: 'IP address(Start)' and 'IP address(End)' with a 'to' label between them; 'User name' and 'Password' fields; and a 'Protocol / Port Number' section with radio buttons for 'HTTP' (port 80) and 'HTTPS' (port 443), and input fields for 'FTP' (port 21) and 'TELNET' (port 23). At the bottom are 'Set' and 'Cancel' buttons.

4 Start uploading

Click [Start] button to start uploading.

When the upload of the settings is completed, the dialog box will be displayed.

Note:

- Click [Save] button to save information of the device list.
- The saved settings (setup file) from Download Configuration & Log Files / Upload Configuration Files/ Upgrade Firmware can be opened by clicking [Open] button.

.....

The 'Upload Configuration Files' dialog box shows a list of devices for upload. It includes fields for 'File name', 'Model', and 'Version'. Below is a table with columns: 'No.', 'IP address', 'Model', 'MAC Address', 'Version', 'Serial No.', 'User name', 'HTTP port', 'FTP Port', and 'Result'. The table contains one entry with IP address 192.168.0.16. At the bottom, there are 'Start' and 'Close' buttons, with the 'Start' button highlighted by an orange box.

5 Complete the upload.

Click [OK] button.

Note:

- The Log list will be saved in the "Desktop\Panasonic Security System Configuration Tool (PSSCT)\yyyyymmdd_hhmmss" folder created by this software.

.....

The 'Upload Configuration Files' dialog box shows the upload progress. A progress bar is at the top, and a 'Completed' message box is displayed in the center. The message box says 'Completed.' and has an 'OK' button. The background dialog box shows the same table as before, but the 'Start' button is no longer highlighted.

Upgrade Firmware

Important:

- Wait until the software firmware completes.
- When designating the directory to save the upgrade firmware, enter 1-byte alphanumeric characters.
- Do not access concurrently to the same device from multiple PCs using this software. Otherwise, device errors may occur.
- It is impossible to upgrade the firmware when the device is in operation.
- Make sure that the file used for the firmware upgrade is designated file.

1 Click [Upgrade Firmware] button.

The Upgrade Firmware selection page will be displayed.



(Upgrade Firmware)

Important:

- Information added / deleted / edited independently on "Upgrade Firmware" is effective only within "Upgrade Firmware" menu.

.....

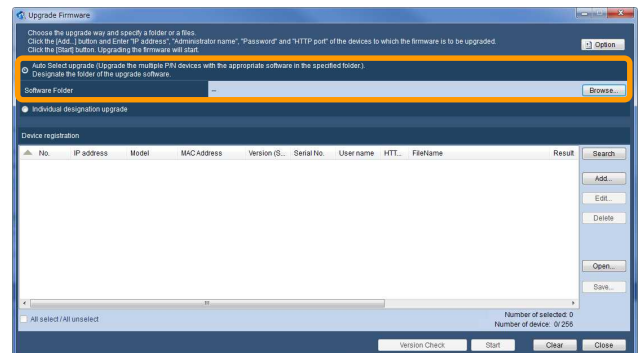
2 Choose the upgrade way.

- When "Auto Select upgrade" is selected. Click [Browse...] button. Select the folder in which the update software is stored on the "Browse For Folder" page.

Important:

- When upgrading Application software (extension: img) and Camera Driver software (extension: bin) at the same time by using this function, do not change the folder and file name which extract the downloaded ZIP file from Panasonic site.

.....

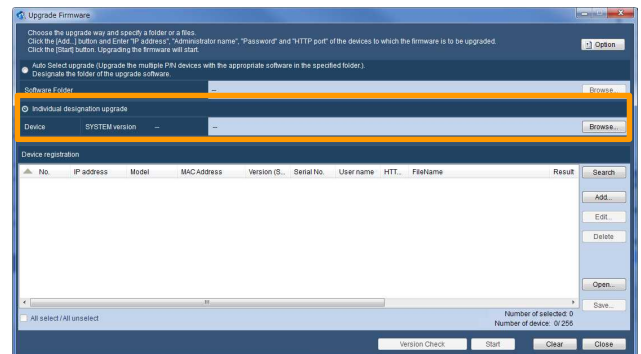


Important:

- It is possible to run Two-step Upgrade Firmware *1 automatically when using this function. Do not change the folder and file name which extract the downloaded ZIP file from Panasonic site.

1 SW55/SP50*/SF54*/SF53* Series : When upgrading from the older version(V1.30) to after V1.40
SF448/SW45*/SF43* Series : When upgrading from the older version(V1.04) to after V1.40

- When "Individual designation upgrade" is selected.
Click [Browse...] button.
Select the software on the "Open file" page.
The file name, model number and version of the selected software will be displayed.



3 Register additional devices as needed.

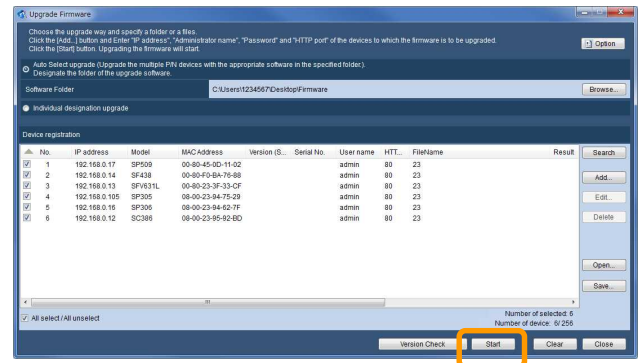
Please refer to the procedure in the [Upload Configuration Files] chapter.

4 Start updating the software

Click [Start] button to start updating the software.
When the upgrade of the firmware is completed,
the dialog box will be displayed.

Note:

- Click [Version Check] button to get information of the registered device and display the list.
- Click [Save] button to save information of the registered device.
- The saved settings (setup file) from Download Configuration & Log Files /Upload Configuration Files/ Upgrade Firmware can be opened by clicking [Open] button.

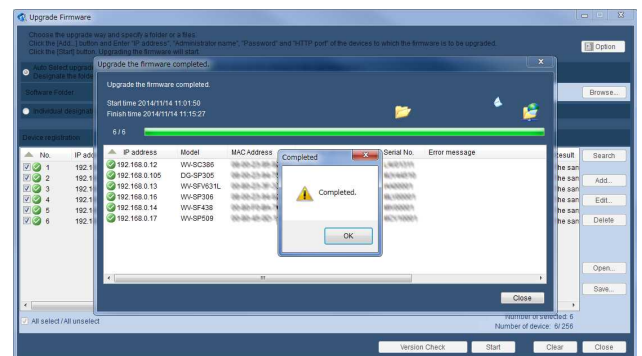


5 Complete the firmware upgrade.

Click [OK] button.

Note:

- The Log list will be saved in the "Desktop\Panasonic Security System Configuration Tool (PSSCT)\yyyyymmdd_hhmmss" folder created by this software.



Configure Recorders

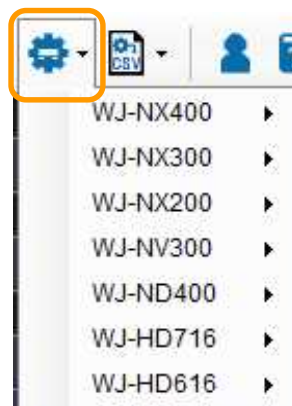
To start the "recorder configuration file editor" or "recorder configuration file conversion tool".

1 "Create and / or Edit the Recorder Configuration File"

Press icon and select the model number and the version of target recorder to launch the offline editing software of the Recorder Configuration File.

[Supported Recorders]

NX400/NX300/NX200, NV300,
ND400, HD716/HD616



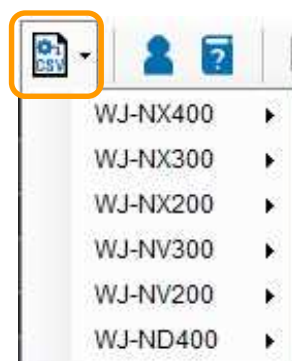
Refer to the operating instructions of the device in use for information about each setting item.

2 "Convert the Recorder Configuration File to Text File"

To convert Recorder Configuration File (*.bin) into text (*.csv) by press icon, selecting Model and Language, target file (*.bin) and press [OK].

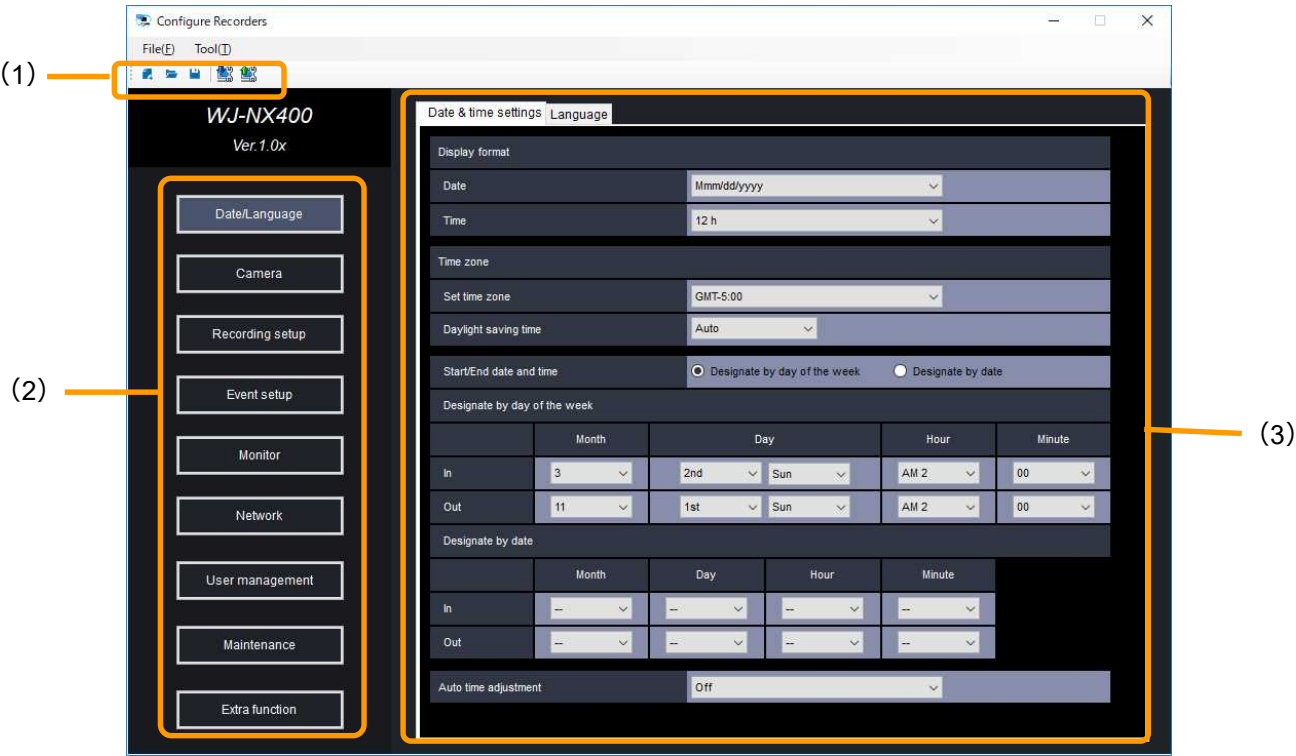
[Supported Recorders]





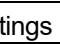
NX400/NX300/NX200,
NV300/NV200, ND400



Recorder Configuration File editor

To select “Create / Edit Recorder Configuration File” function, “Configure Recorder” screen will be launched.
The following is an example for of WJ-NX400 editor.



No.	Item	Description
(1)	Tool bar	
	 New	Create new Recorder Configuration File.
	 Open	Import an existing Recorder Configuration File.
	 Save	Export edited configuration as new Recorder Configuration File.
	 Download	To download Recorder Configuration File from the device.
	 Upload	To upload Recorder Configuration File to the device.
(2)	Menu button	Category of recorder setting items.
(3)	Settings	View and edit area of setting items.

Note:

- Refer to the operating instructions of the device in use for information about each setting item.

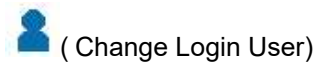
.....

Change Login User

Change the user name and password required for login.

1 Click [Change Login User] button.

The user edit page will be displayed.



2 Change the user information

Click [OK] button after completing the fields of "New user name", "Current password", "New password" and "Retype new password".

Note:

- Enter 5 - 32 alphanumeric symbol characters for "User name".
- Enter 8 - 32 alphanumeric symbol characters for "Password".
- Available "symbols" are as follows (common to both user name and password field).
! # \$ % () * + , . / < > ? @ [] ^ _ ` { | } ~

.....

A screenshot of a web application dialog box titled "Change user information" with a close button (X) in the top right corner. The dialog has a dark background. Inside, there's a section titled "Change user information for this tool." followed by four input fields: "New User Name(5 to 32 characters)", "Current password", "New password*(8 to 32 characters)", and "Retype new password* to confirm.". These fields are grouped by a yellow rectangular highlight. Below the fields is a checkbox labeled "Show the entered characters for password as it is." which is currently unchecked. Below the checkbox is a small text block: "*For the password, use three or more types of characters from upper case, lower case, numbers, and symbols. *Set the password which does not include the user name." Below that is a line of text: "Store the administrator name and the password so as not to forget." At the bottom of the dialog are two buttons: "OK" and "Cancel". The "OK" button is highlighted with a yellow rectangular border.

Refer to the Manual

1 Click [Manual] button.

This manual and “Available function list for each compatible device (PDF file)” will be displayed.



(Manual)

Note:

- Select "PSSCT2" from "Start" menu ("Start" - "All Programs" - "Panasonic" - " Panasonic Security System Configuration Tool (PSSCT2)" - "Panasonic Security System Configuration Tool (PSSCT2)"). This manual will be displayed.

.....

Other

Troubleshooting

Check the following before requesting repair.

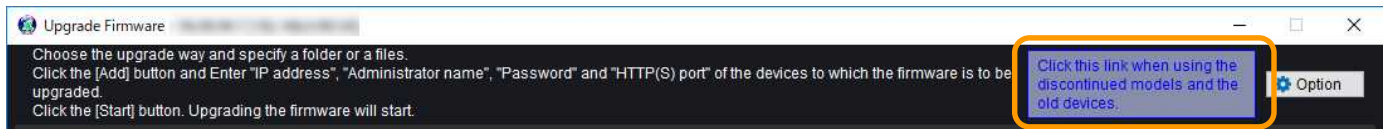
Symptom	Cause / solution	Page
Cannot access the device from this software.	<p>► Confirm that the network cable is properly connected. Confirm the indicator of the device.</p>	—
	<p>► Is the connection indicator of the device lit? In case it is not lit, IP connection is not established or a network is not working correctly. Confirm that the connection indicator of the 10BASE-T/100BASE-TX port is lit. Refer to a system administrator if it is not lit.</p>	—
	<p>► Is the valid IP address set? Refer to a system administrator for further information.</p>	—
	<p>► Are you accessing the wrong IP address? Check the connection as follows: >ping "IP address of the device" If there is reply from the device, the connection is normal. If not, check the settings of the IP address and the subnet mask.</p>	—
	<p>► Is the same IP address provided to other devices? Refer to a system administrator for further information.</p>	—
	<p>► Are there contradictions between the address and the network subnet to be accessed? When the device and the client (PC) are on the same subnet, is the same subnet set for the IP addresses of the device and the PC? Is "Use Proxy Server" for the settings of the browser checked? When accessing the device in the same subnet, entering the address of the device in the "Don't Use Proxy For These Addresses" box is recommended. Is the address undefined because the LAN cable is not properly connected to the network adapter or the HUB is not turned on? Please check that cable connection is correct, cable is not damaged, PING goes to target device, etc.</p>	—

Symptom	Cause / solution	Page
Cannot detect the device or configure the IP address.	<p>Have 20 minutes passed after turning on the power of the device?</p> <p>For security enhancement, the MAC address/IP address of the device will disappear and configuration of the settings will become unavailable when 20 minutes have passed after turning on the power of it.</p> <p>▶ (1)Reboot the device.</p> <p>(2)Confirm the power supply, the connection to the NW switch and start-up.</p> <p>(3)Click [Start] or [Refresh] button.</p> <p>Refer to the setup instructions of the device for information on how to reboot it.</p>	—
	<p>▶ The firewall function of the anti-virus software may be filtering the port of the camera.</p> <p>Allow access to all UDP and HTTP ports.</p>	—
	<p>▶ Are the incompatible devices (no camera, recorder, switch and operation PC) connected in the same subnet?</p> <p>Remove the incompatible devices from the same subnet.</p>	—
	<p>▶ The connected Ethernet cable may be defective.</p> <p>Exchange it for the others.</p>	—
	<p>When the DHCP server is not found and camera's "Network Settings" is selected, the IP address may not be configured.</p> <p>Please run the DHCP server or change the mode.</p>	—
	<p>▶ When the same Network Information was set, an error message may be displayed.</p> <p>It is shown that the message does not have changes.</p> <p>Please continue a job.</p>	—

Symptom		Cause / solution	Page
Fail to log in.	▶	<p>Is the correct password entered? Confirm that the correct password is entered. If you cannot remember the authentication information, you can reset the username and password by checking the "Initialize all previously registered credentials and start the tool" option.</p>	10
The installer is launched when starting this software. The message saying that it is necessary to reinstall the software is displayed.	▶	<p>It may be possible that the files copied onto the PC upon the installation are deleted, moved or edited. Reinstall by following the displayed instructions or uninstall the software and install it again. Is not the state referring to the contents without fully deploying the ZIP file? Please fully deploy the ZIP file and execute "setup.exe" If installation of Visual C ++ package fails, please make sure that the latest patch has been applied on Windows system itself.</p>	—
Fails to "Upload Settings" operation.	▶	<p>Make sure the copy destination folder is selected correctly and files in the folder are the same as the files at the time of backup.</p>	—
Fails to "Download setting" or "Download log" operation.	▶	<p>Ping may be blocked at the route from the PC to the target device. Please set "Device survival check by PING" in "Options" setting to Off and retry. Please confirm that FTP and/or TELNET is not blocked at the route from PC to the target device.</p>	—

For old camera and old recorder users

When using the discontinued models and the old devices in the “Upgrade Firmware” and “Upload Configuration Files” menu, click the following button to use the old version of this software.



Cautions when using the software

The following phenomena may occur when using this software on Windows. If it occurs, follow the provided instructions below. Note that the operation shall be made by an administrator.

The following instructions are tested and confirmed. However, note that a phenomenon may not be exactly the same as described according to the PC environment, OS, etc.

The following are the instructions and restrictions for each phenomenon.

<Phenomena 1>

The software page is not displayed correctly after starting the software.(See the diagram below)



Solution

Confirm "Control Panel" – "Display". When "Smaller – 100%" is not selected, set the font size to "Smaller – 100%".

1 Click "Control Panel" – "Display".

Display page will be displayed.

2 Select the font size "Smaller – 100%".

For U.S. and Canada:

Panasonic i-PRO Sensing Solutions Corporation of America
800 Gessner Rd, Suite 700 Houston, TX 77024
<https://www.security.us.panasonic.com/>

Panasonic Canada Inc.

5770 Ambler Drive, Mississauga, Ontario, L4W 2T3 Canada
1-877-495-0580
<https://www.panasonic.com/ca/>

For Europe and other countries:

Panasonic Corporation

<http://www.panasonic.com>

Panasonic i-PRO Sensing Solutions Co., Ltd.
Fukuoka, Japan

Authorized Representative in EU:

Panasonic Testing Centre
Panasonic Marketing Europe GmbH
Winsbergring 15, 22525 Hamburg, Germany

Panasonic Security System Configuration Tool
PSSCT
- Administrator Registration Guidance -

April 2016 : First Edition
February 2020 : Revised Edition

Panasonic i-PRO Sensing Solutions Co., Ltd.

《At First》 Overview of Administrator Registration

Administrator Registration using PSSCT 5.6 or later is following.

Step 1 Configure Networks Settings

EasyIpSetup.exe
or
PSSCT



Configure networks



Step 2 Get status of devices to show as "Device Configuration List"

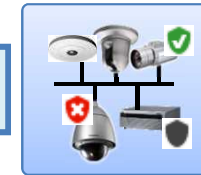
PSSCT

"Device Configuration List"
on PSSCT

1	192.168.0.31	SPN111A	WV-SPN111A	08-00-23-...	---
2	192.168.0.53	SPN111A	WV-SPN111A	08-00-23-...	---
3	192.168.0.123	BB-H111A	NetworkCamera	00-80-F0-...	---
4	192.168.0.135	GXE			---
5	192.168.0.150	M8e			---

Registered
Unregistered...

Get status



In case of administrator
unregistered device
has been detected.*

*Includes devices which state can not be uniquely identified. (See Step 2 for detail)

Step 3 Administrator Settings

PSSCT

Administrator
Settings screen

Register to devices
(Send)

Target(☒)

Device List
updating

Get result
from devices



《Step 1》 Configure Network Settings

Step 1 Configure Networks Settings

Prior to administrator registration, configure network settings to access target device(s) properly.

- Incomplete settings : To Configure network settings using following tools.
- Settings completed : Please proceed to Step 2.



EasyIpSetup.exe

-> Network Settings

OR



PSSCT2 -> "IP address settings"

First

▼ Detect / Add / Delete Devices

Create Device Configuration List

IP address settings of the compatible devices.

Edit the IP address manually for each device.

Automatic IP address assignment through available range.

Transmit all IP address settings edited above to devices.

Confirm Status of Devices

Download Current Settings from devices.

<Note>

In this guidance, "**device(s)**" is a generic term for 'camera(s)', 'recorder(s)', 'network microphone(s)' and 'encoder(s)'.

After configuration settings are completed, please proceed to Step 2.

《Step 2》 “Device List” Creation

- To show registration status of each device -**

Step 2 Device List Creation(1/4) – To launch PSSCT-

In this step, get status from devices to create “Device Configuration List” to know which device have to be administrator registered newly.

Procedure 1: To launch “PSSCT2” -> “Configure Devices”

(1) Double-click icon to launch PSSCT2

(2) Login screen to launch PSSCT

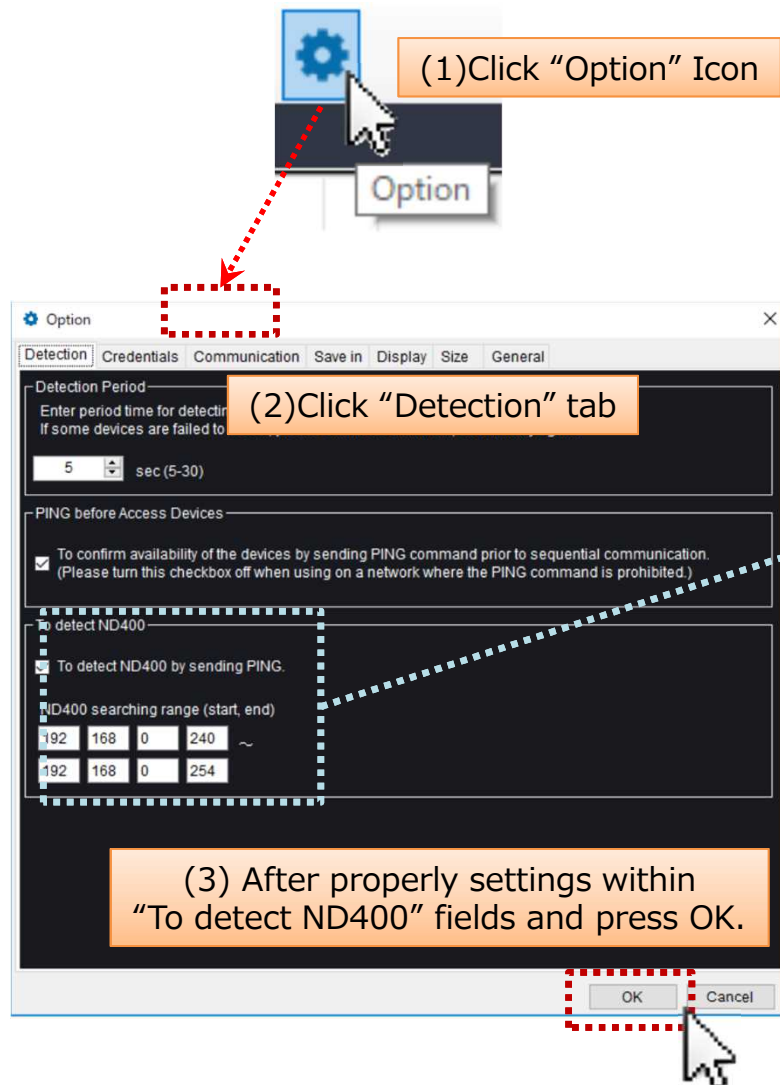
(3) “Configure Devices” screen is shown.
The subsequent operation is done on this screen.

The first screenshot shows a globe icon with a green triangle on it. A red dotted arrow points from this icon to the second screenshot. The second screenshot is a 'Login' dialog box. It has a title bar with a close button. Inside, there are two text input fields: 'User name' with 'admin' entered, and 'Password' with masked characters. Below the password field is a checkbox labeled 'Show the entered characters for password as it is.' which is unchecked. At the bottom, there is a checked checkbox with the text 'When this check box is turned on, it is possible to check whether this software version is the latest by connecting to the Internet.' Below this are 'OK' and 'Cancel' buttons. A red dotted arrow points from the 'OK' button to the third screenshot. The third screenshot is the 'Configure Devices' window. It has a title bar and a sidebar on the left with a tree view containing items like 'Device List', 'Image About', 'Device Selection Image Quality', 'Configure Camera', 'STEP1: Configure Parameters', 'STEP2: Copy Parameters to Device List', 'STEP3: Send Latest Configuration to Selected Cameras', 'Other', 'Maintenance', and 'Send a CGMLB'. The main area on the right is titled 'Device Configuration List' and contains a table with columns: 'IP Address', 'Host', 'Camera Title', 'MAC Address', 'Status', 'Network Settings', 'Secret menu', 'Default gateway', and 'HTTP'. The table is currently empty.

Step 2 Device List Creation(2/4) –WJ-ND400 detection–

In case of ND400s does **not** exist in your system, skip this page and move to 'Procedure 3'.

Procedure 2:(In case of ND400 existence in the system) To setup ND400 detection settings.



Essential point about ND400 detection

1: To turn on checkbox here. ☒

☒ To detect ND400 by sending PING.

ND400 searching range (start, end)

192	168	0	240	~
192	168	0	254	

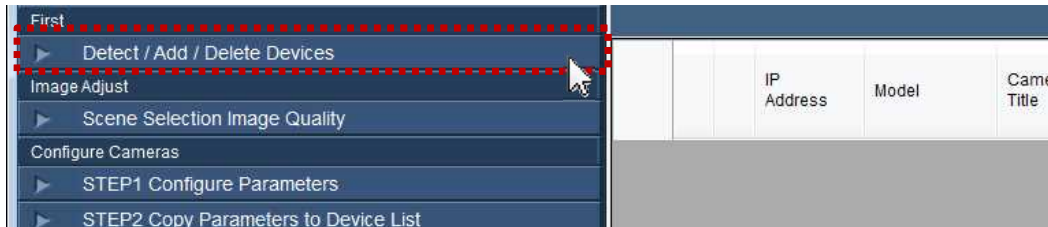
2 : To set this field covers target ND400's address(es).

<Note>

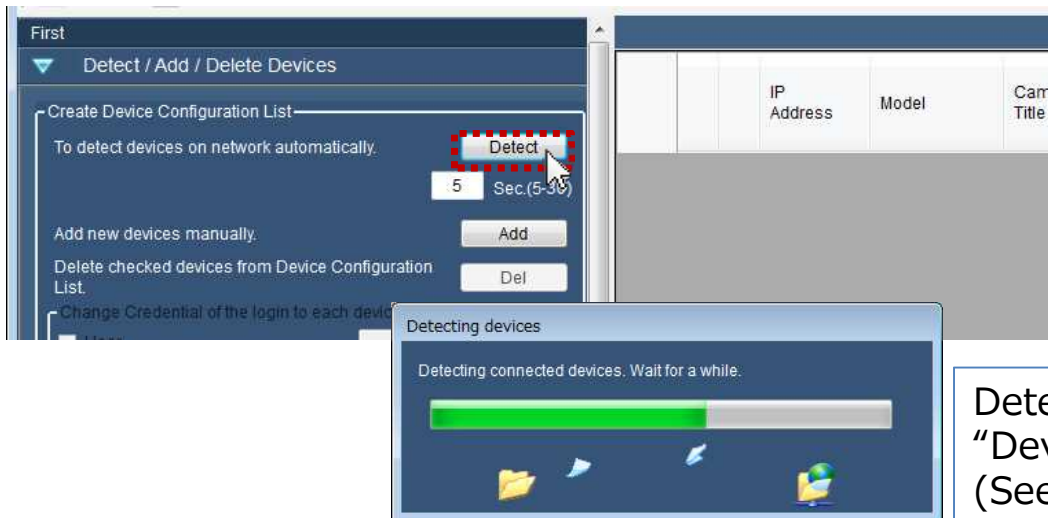
To set "searching range" above as requisite minimum.
(If you specify a wide range of more than necessary,
it takes time to finish WJ-ND400 detection.)

Step 2 Device List Creation(3/4) –Get device status -

Procedure 3: Press [Detect / Add / Delete Devices] button.



Procedure 4: To press [Detect] button, start to detect devices on network automatically.



Detected devices shown up to "Device Configuration List" field.
(See next page to detail.)

<Note>

If you fails to detect WJ-ND400s, please revalidate the settings described 'Procedure 2 (previous page) and retry again.

Step 2 Device List Creation(4/4) – List-reading -

Procedure 5 : To ensure “Model” column on “Device Configuration List”.

Device Configuration List							
			IP Address ▲	Model	Camera Title	MAC Address	Status
1	<input type="checkbox"/>		192.168.0.31	✓ SPN115A	WV-SPN115A	08-00-23-...	---
2	<input checked="" type="checkbox"/>		192.168.0.53	✗ SPN115A	WV-SPN115A	08-00-23-...	---
3	<input checked="" type="checkbox"/>		192.168.0.123	● WV-HCM531	NetworkCamera	00-80-F0-...	---
4	<input type="checkbox"/>		192.168.0.135	GXE100		00-80-45-...	---
▶ 5	<input type="checkbox"/>		192.168.0.150	M8eCLP400		00-50-40-...	---

Registration status of each devices are shown as icons (  ).


 : Administrator is already registered devices.

 : Administrator is not registered devices.

 : Administrator state unknown devices. (HCM7xx/5xx and/or incommunicable devices)

(No icons) : Legacy devices.

If this software detect devices as  or , the checkbox of the device marked up to turn-on () to proceed Administrator Registration. (See ‘Step 3’)

If the device that needs to be set administrator does not exist (all devices belongs to  or no icon group), the following ‘Step 3’ procedures are not executed.

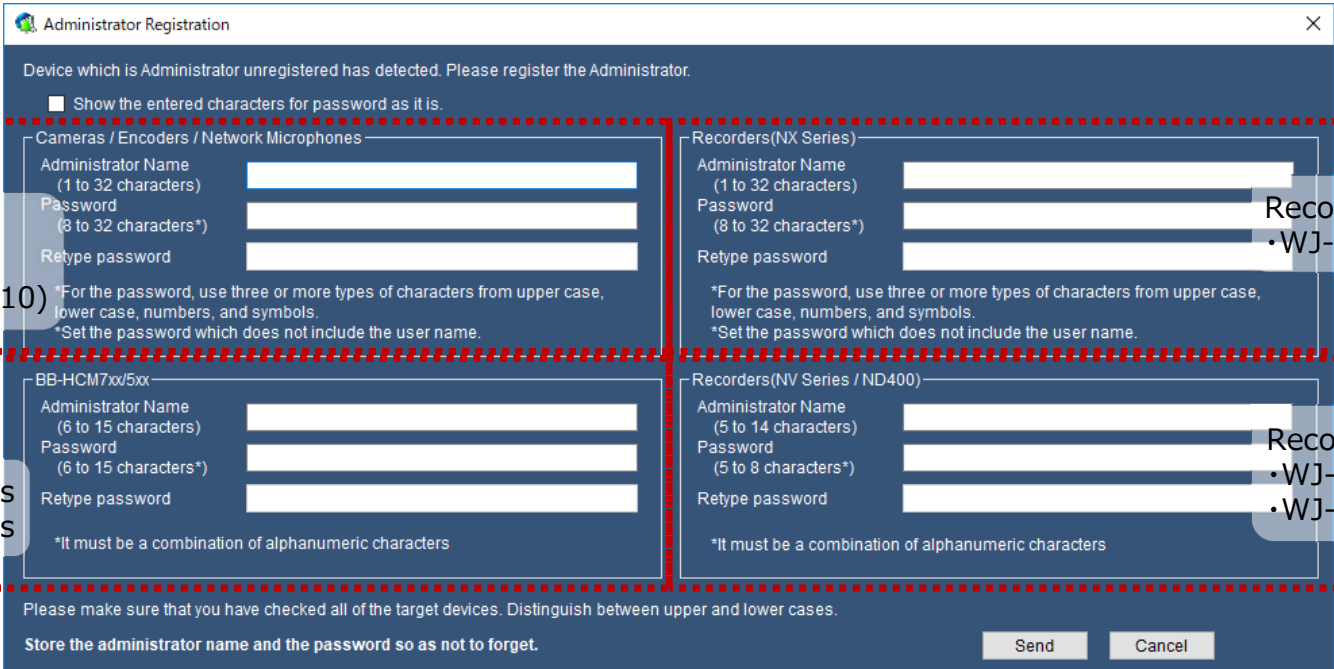
《Step 3》 Administrator Registration

- Procedure Registration to target devices -**

Step 3

Administrator Registration(1/2) -Input Screen-

After detection  or  devices, the “Registration” screen will appear automatically.



The screenshot shows the "Administrator Registration" window. It contains four groups of input fields, each with a red dashed border and a label:

- A** (Cameras / Encoders / Network Microphones):
 - Administrator Name (1 to 32 characters)
 - Password (8 to 32 characters*)
 - Retype password
- B** (BB-HCM7xx/5xx):
 - Administrator Name (6 to 15 characters)
 - Password (6 to 15 characters*)
 - Retype password
- C** (Recorders(NX Series)):
 - Administrator Name (1 to 32 characters)
 - Password (8 to 32 characters*)
 - Retype password
- D** (Recorders(NV Series / ND400)):
 - Administrator Name (5 to 14 characters)
 - Password (5 to 8 characters*)
 - Retype password

Each group has a note: "*For the password, use three or more types of characters from upper case, lower case, numbers, and symbols. *Set the password which does not include the user name." (or "It must be a combination of alphanumeric characters" for group B). At the bottom, there are "Send" and "Cancel" buttons.

Procedure 1:

Please input each item according to the rules described.

(While the rules satisfied you entered, the field shown as light green)

<Note>

Depending on the device presence of each A/B/C/D group, the fields of group shown as enabled and/or disabled automatically.

Step 3**Administrator Registration(2/2) –Send Settings–**

Procedure 2: After completion of input, press 'Send' to reflect settings to devices.



<Note>

To ensure the target device which is to be registered are shown as ☒ on device list.

Procedure 3: To confirm the result.

1	<input type="checkbox"/>	192.168.0.31	✓ SPN115A	WV
2	<input checked="" type="checkbox"/>	192.168.0.53	✓ SPN115A	WV
3	<input checked="" type="checkbox"/>	192.168.0.123	✓ WV-HCM531	Net
4	<input type="checkbox"/>	192.168.0.135	GXE115	
5	<input type="checkbox"/>	192.168.0.150	M8eCULP115	

All devices shown as ✓ and/or without icon, registration is complete.

Store the administrator name and password so as not to forget.



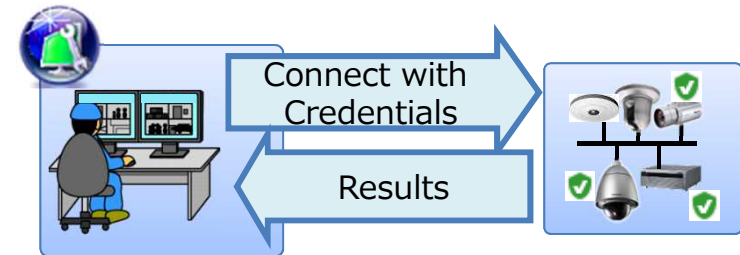
《Appendix》 PSSCT Operation

- For use after the administrator registration -

《Overview》 Credentials of Device Communication

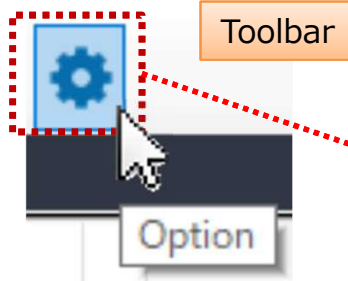
At First

For appropriate communication with the devices, credentials setting of this tool and administrator information of devices must be match.



<Note> If the credentials do not match, failed to communicate with the device and an error message appears.

Settings



**Set credentials using the
“Option” screen menu.**
(For details, See following pages.)

Option

Detection | **Credentials** | Communication | Save in | Display | Size | General

Set Credential of the login to each devices.

Cameras / Encoders / Network Microphones

User name: admin

Password:

Recorders(NX Series)

User name: admin

Password:

Recorders(NV/ND/HD Series)

User name: ADMIN

Password:

BB-HCM7xx/5xx

User name: adminadmin

Password:

Others

User name: manager

Password:

{Security Notice} Above settings will be applied continuously with the subsequent communication. If you connect with the other network system, please reconfigure these settings prior to the connection in order to avoid leakage of previous credentials.

OK Cancel

To Set “Default” Credentials (“Option” menu)

The setting fields are separated to device categories.

Toolbar

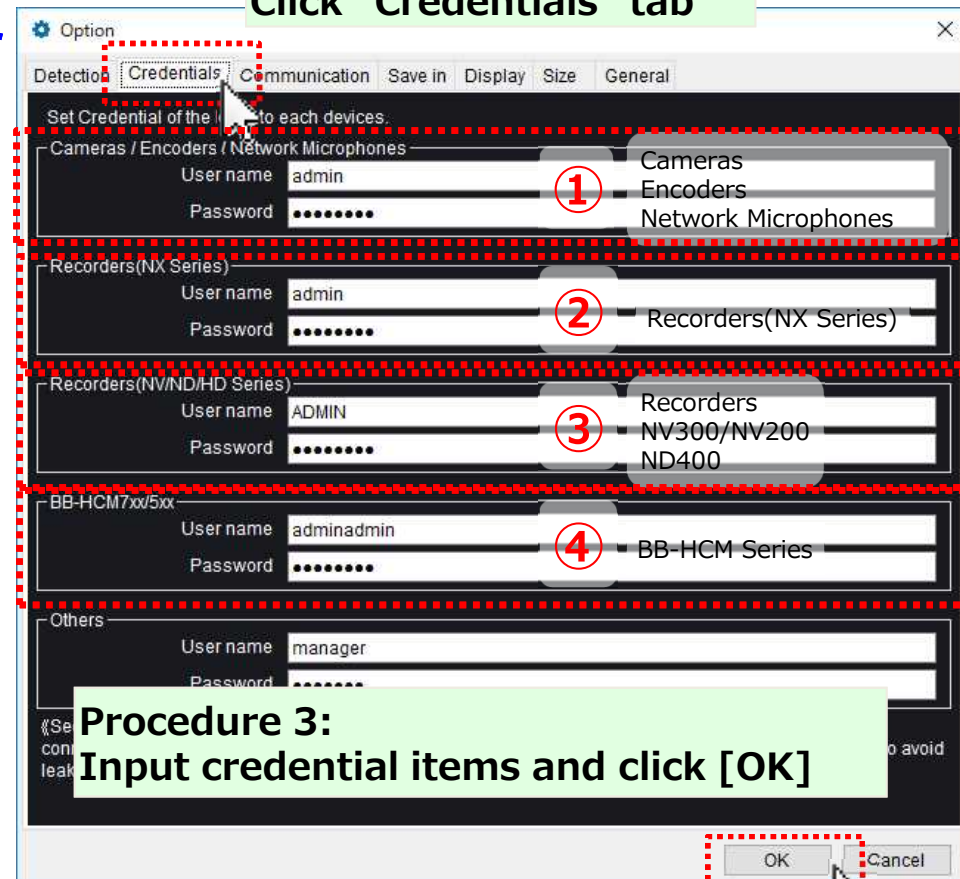
Procedure 1:
Click “Options” button

**Comparison with the
“Administrator Registration”**



The Administrator Registration dialog box is shown with four red circles highlighting the input fields: 1. Password field for Cameras / Encoders / Network Microphones. 2. Password field for Recorders(NX Series). 3. Password field for Recorders(NV/ND/HD Series). 4. Password field for BB-HCM7xx/5xx.

Procedure 2:
Click “Credentials” tab



The Option dialog box is shown with the Credentials tab selected. It displays credential settings for various device categories, each with a red circle highlighting the input fields: 1. Cameras / Encoders / Network Microphones (User name: admin, Password:). 2. Recorders(NX Series) (User name: admin, Password:). 3. Recorders(NV/ND/HD Series) (User name: ADMIN, Password:). 4. BB-HCM7xx/5xx (User name: adminadmin, Password:). The Others section shows User name: manager and Password:

Procedure 3:
Input credential items and click [OK]

- Credentials set through above procedures will be reflected in the actual communication **at the timing of pressing the “Detect” button again.**
- Above settings will be applied **continuously with the subsequent communication.** If you connect with the other network system, please **reconfigure** these settings **prior to the connection** in order **to avoid leakage of previous credentials.**

To override Credentials temporally (At "Configure Devices")

Procedure 1: "Device Configuration List" Creation using "Detect / Add / Delete Devices"

Procedure 2: Select the target device to setup credentials

Procedure 3: Input each item at "Change Credential" menu and press "Copy" button.



Procedure 4: To check these items are the same what you entered in Procedure 3.

Credentials of each device

		IP Address	Model	Camera Title	User	Password
1	<input checked="" type="checkbox"/>	192.168	✓ E-HOME31	Net	admin	*****
2	<input checked="" type="checkbox"/>	192.168	✓ S-HOME31A	WV	admin	*****
3	<input checked="" type="checkbox"/>	192.168	S-306	WV	admin	*****
4	<input checked="" type="checkbox"/>	192.168	✓ S-306	WV	admin	*****
5	<input checked="" type="checkbox"/>	192.168	M-306		manager	*****

☒ All select / All unselect

<Notes>

- If different credentials are mixed on devices, repeat the procedure 2 to 4 for each group of devices with the same credential.
- By clicking on the title part of the Device List, you can sort item of the list.
- Credentials set this procedure will be discarded at the end of this submenu.
If necessary, use the save () and load () maintenance function of device list.