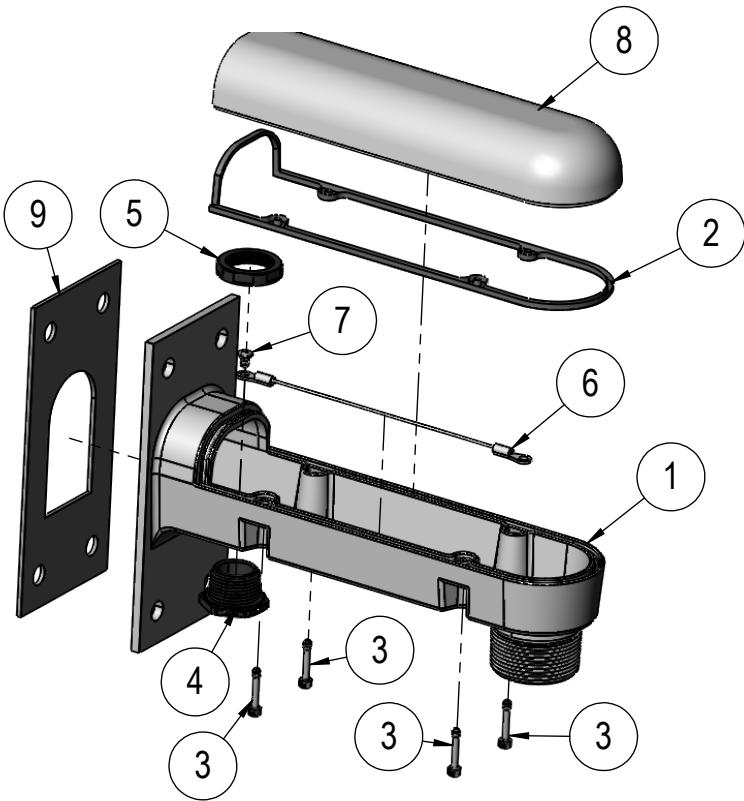
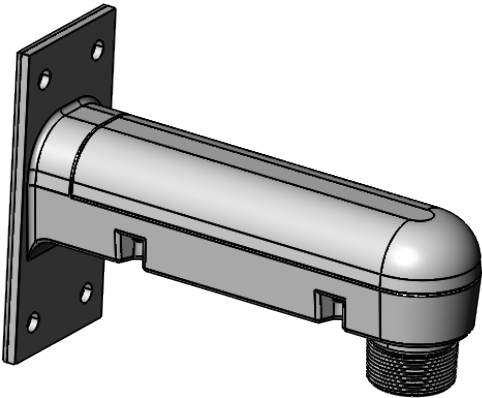


ITEM NO.	PART NUMBER	QTY.
1	320A211P01 or P02, Panasonic PWM40, Wall Mount Base	1
2	320A213P01 or P02, Panasonic PWM40, Wall Mount Gasket	1
3	400A210P02 Screw, SCH Captive, 8-32 x .875	4
4	320A053P01, Plug, .750 NPT, Liquid Tight, heyco-3547b	1
5	320A054P01, Nut, .750 NPT, Liquid Tight, heyco-8465-8466	1
6	202A168 P01 Dome Assy to housing 7 in x .046 dia. cable, 2 eyelets	1
7	400A201P95, Screw, Pan Hd. 8-32 x .25, Phillips, SS	2
8	320A212P01 or P02, Panasonic PWM40, Wall Mount Cover	1
9	320A032 Panasonic, Wall Mt. Gasket	1

- NOTES: UNLESS OTHERWISE SPECIFIED**
- 1. ASSEMBLE PARTS AS SHOWN.
 - 2. USE ALL **P01** PARTS TO ASSEMBLE MODEL **320A214P01**.
 - 3. USE ALL **P02** PARTS TO ASSEMBLE MODEL **320A214P02**.



A	FAS	12/12/2019	ENC# 19044 CREATED THIS ASSEMBLY DRAWING.
REV	BY	DATE	ECN# AND DESCRIPTION
REVISION HISTORY			

DOCUMENT UNCONTROLLED UNLESS STAMPED IN RED

ALL DIMENSIONS IN INCHES
UNLESS OTHERWISE SPECIFIED

TOLERANCES:

FRACTIONS = ± 1/32"

DECIMALS .X = ± .030

.XX = ± .015

.XXX = ± .005

ANGLES = ± 0.5°

TITLE:
WALL MOUNT, PENDANT MOUNT

SIZE: **A** DRAWN BY: **FAS** DATE: **12.12.19**

SHEET 1 of 1 DWG. NO. **320A214** REV: **A**

DEBURR HOLES AND BREAK SHARP EDGES .005-0.15. THIS DRAWING AND THE INFORMATION IT CONTAINS HAVE BEEN FURNISHED FOR USE BY YOUR ORGANIZATION ONLY AND FOR PURPOSES CONSISTENT WITH THE TRANSACTION BETWEEN YOUR ORGANIZATION AND WREN ASSOCIATES, LTD. NO COPIES OF OUR DATA FROM THIS DRAWING SHALL BE FURNISHED TO ANY THIRD PARTY WITHOUT THE WRITTEN AGREEMENT OF WREN ASSOCIATES, LTD.

DO NOT SCALE FROM DRAWING