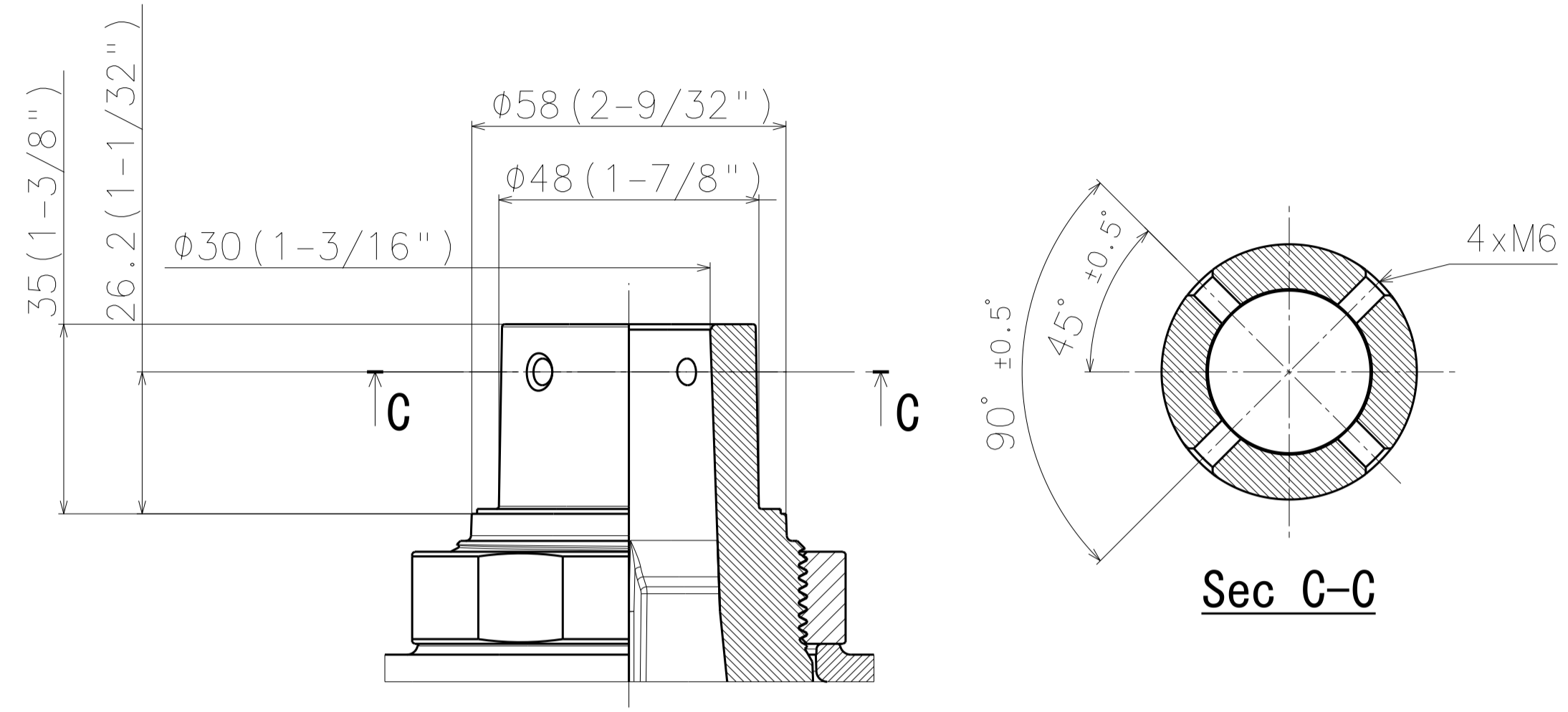
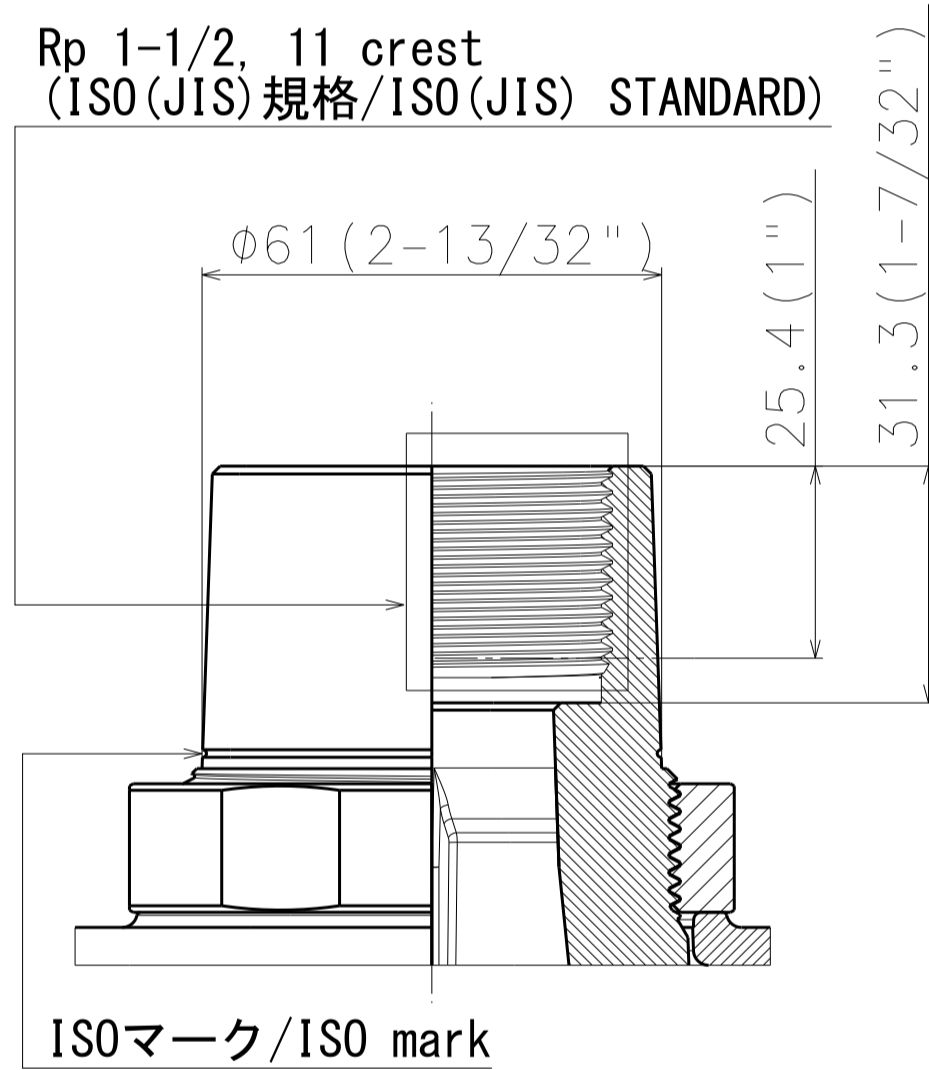


Detail B (S=1:1)
Bracket connector fixing screw type

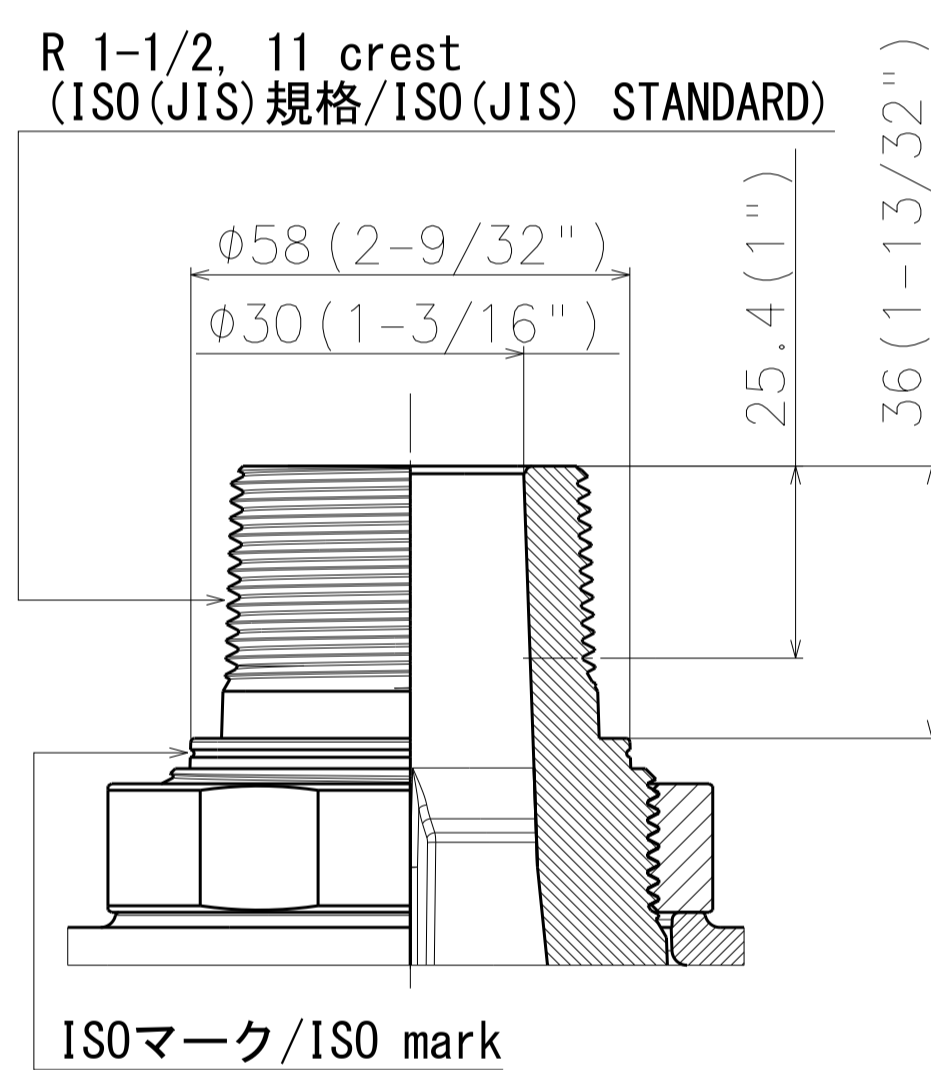
WV-QSR508-*



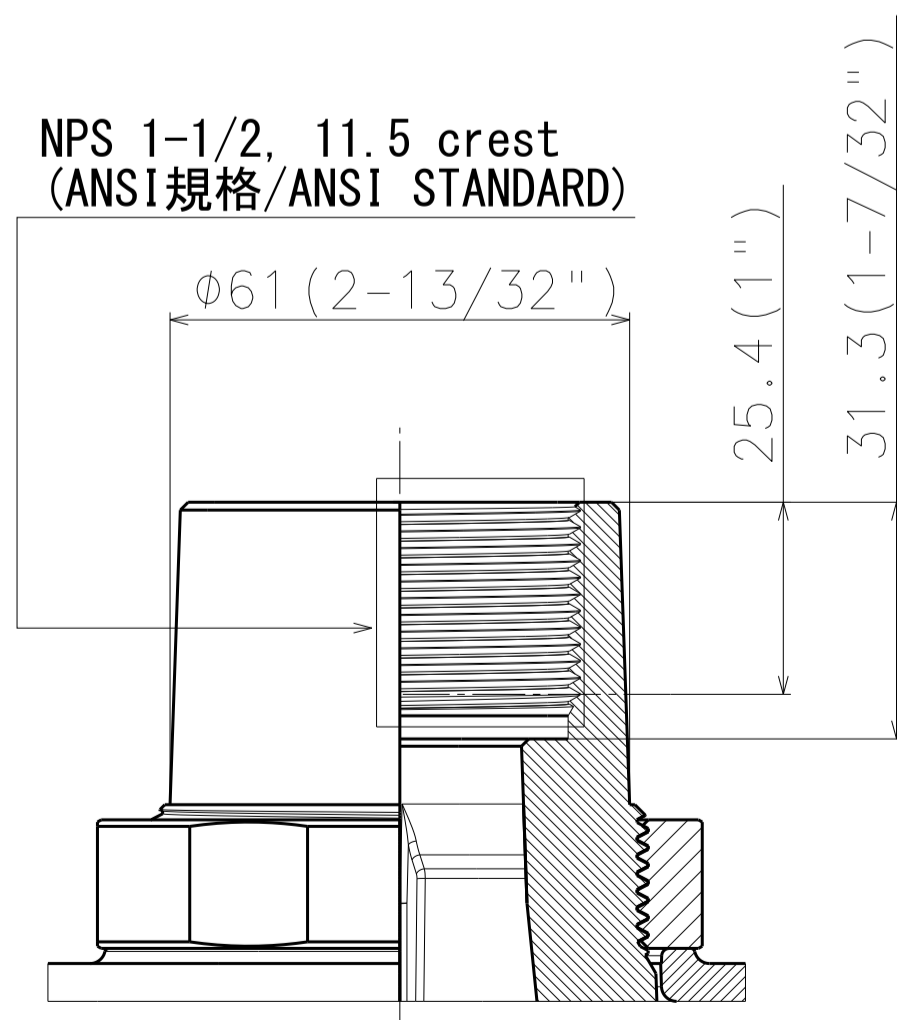
WV-QSR508F-*



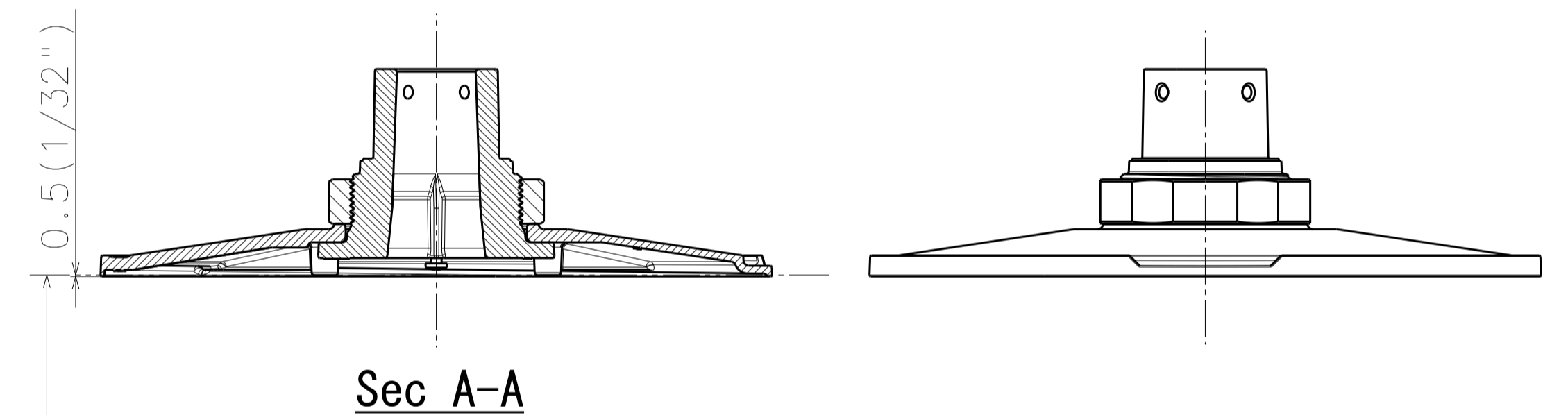
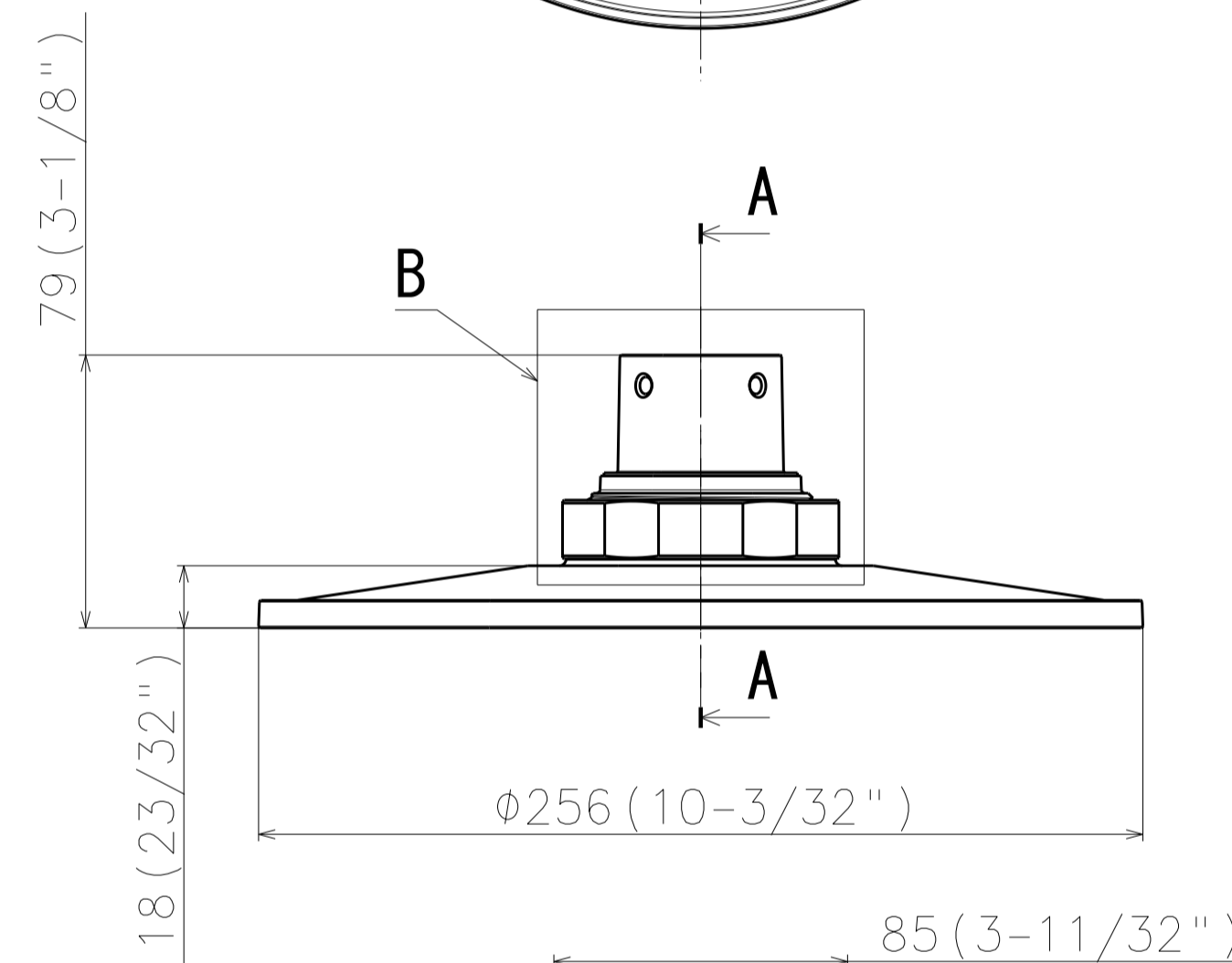
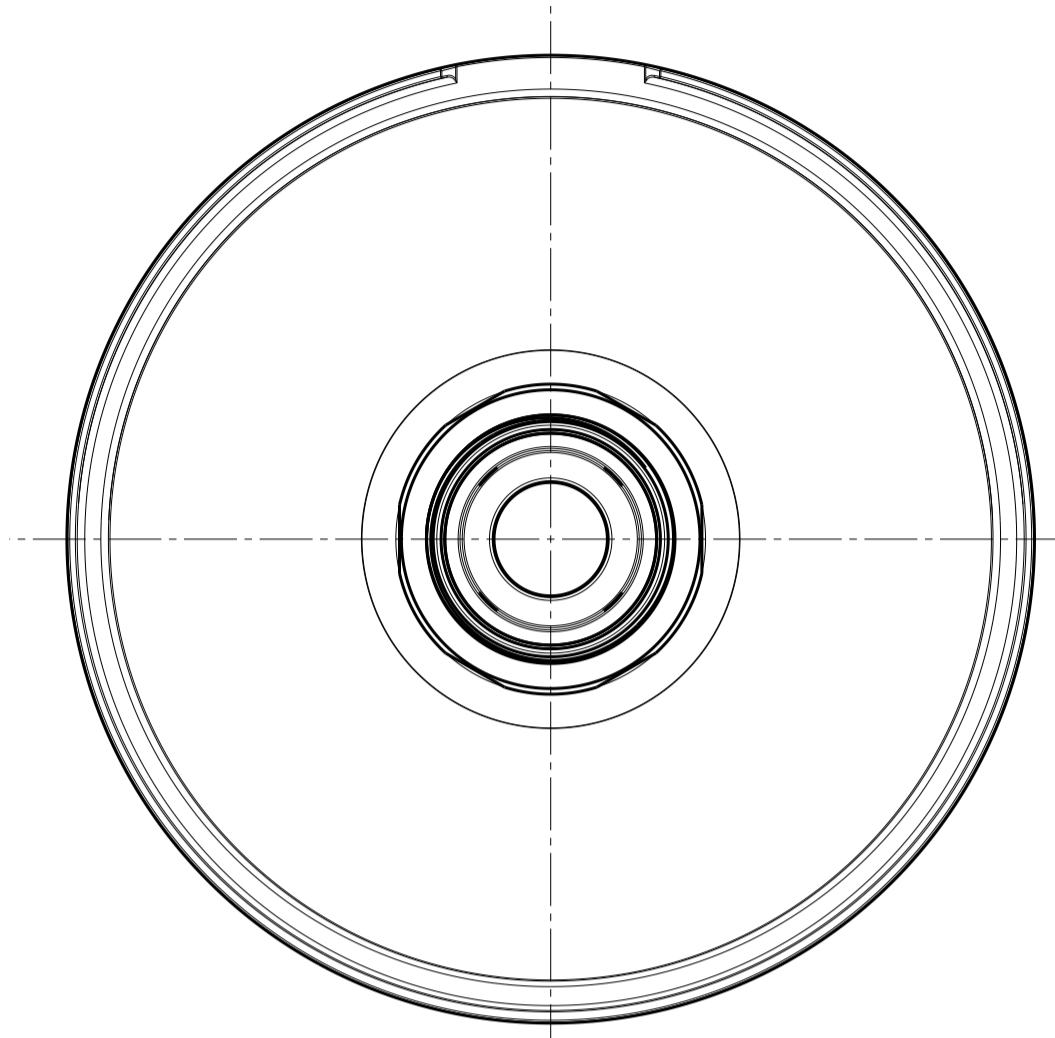
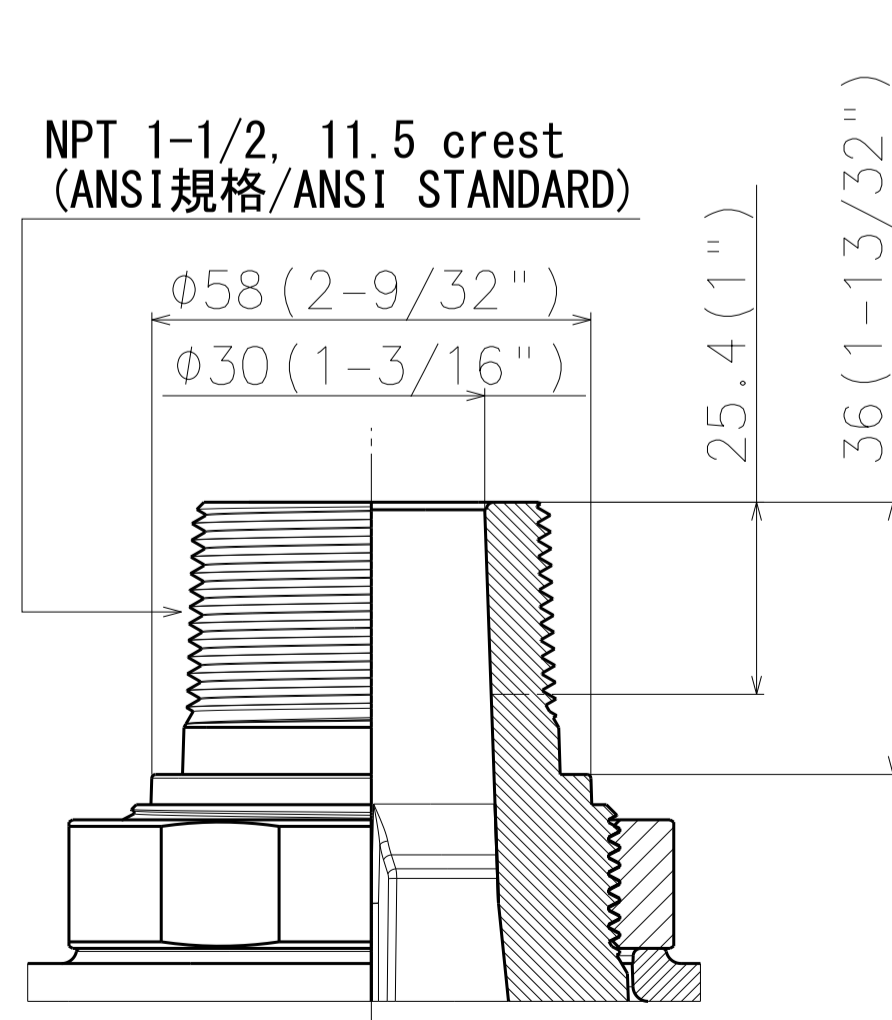
WV-QSR508M-*



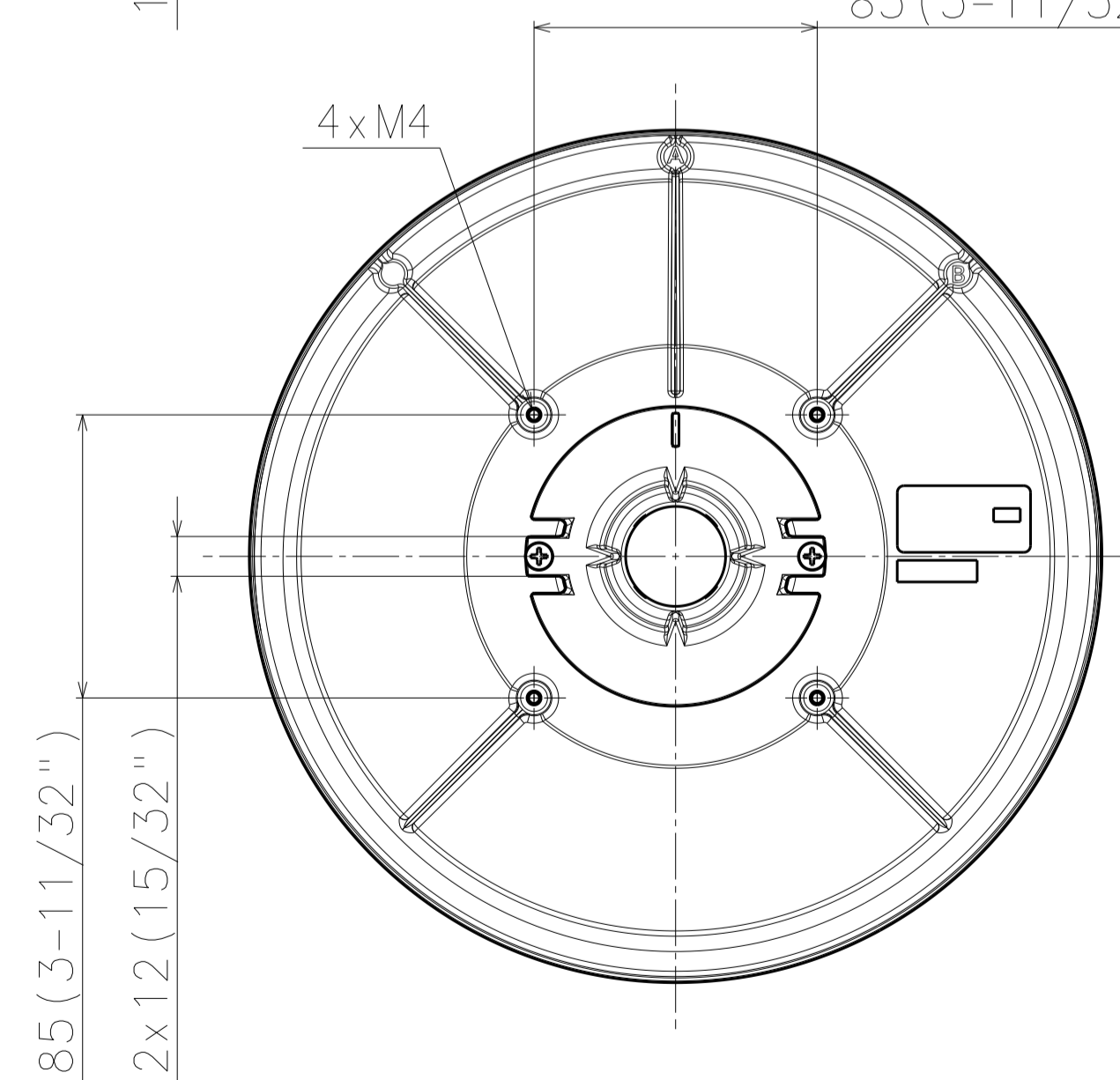
WV-QSR508F1-*



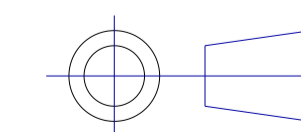
WV-QSR508M1-*



カメラ取付基準
Camera mounting standards



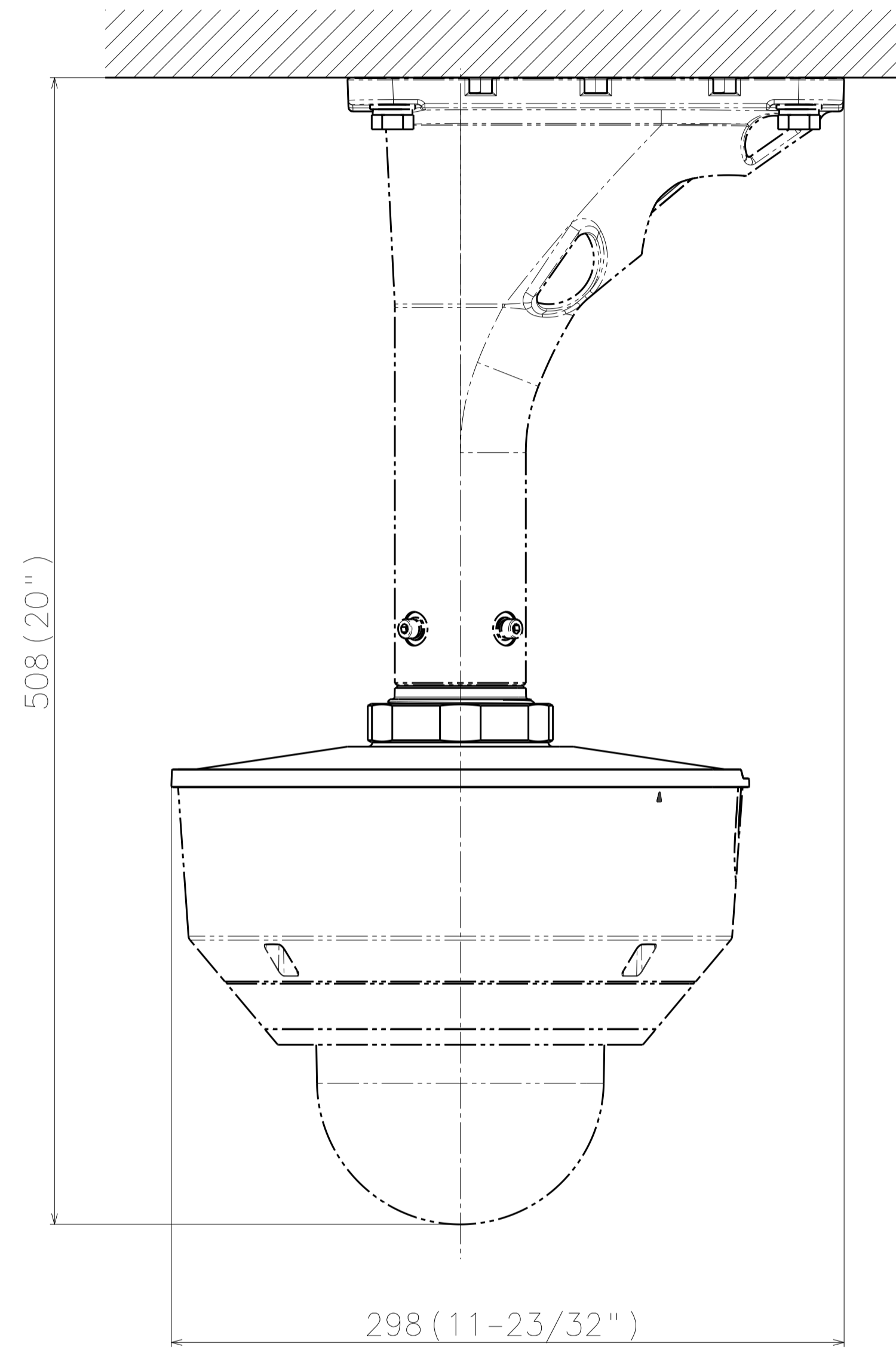
Unit:mm



		投影面積/Projected area
側面図/Side-view (嵌合部除く) (Excluding the mating part)	WV-QSR508-*	0.006 (m ²)
	WV-QSR508F-*	0.008 (m ²)
	WV-QSR508M-*	0.006 (m ²)
	WV-QSR508F1-*	0.008 (m ²)
	WV-QSR508M1-*	0.006 (m ²)

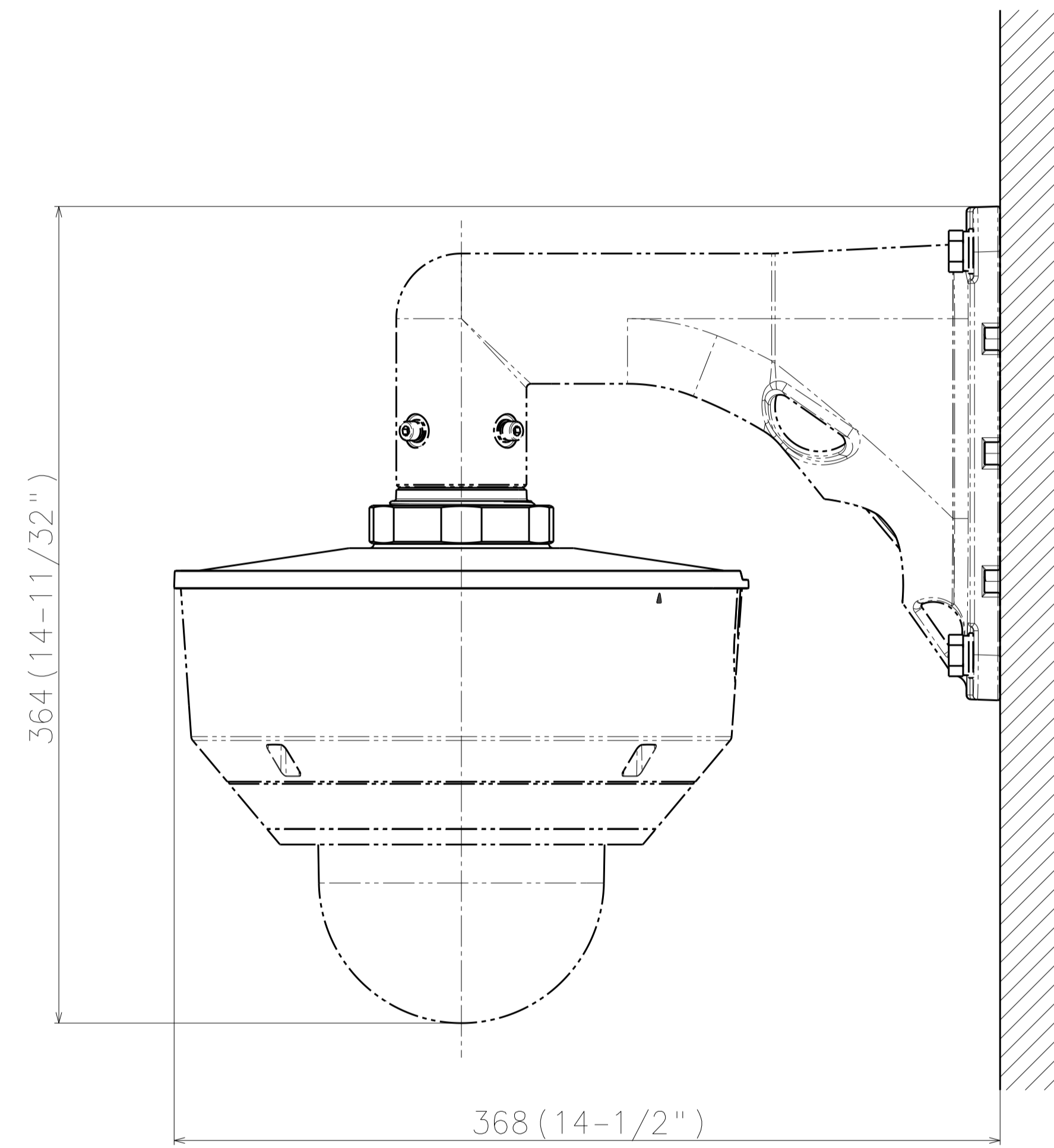
Mass : Approx. 980 g {2.16 lbs} (All screw type same mass)

カメラとの組み合わせ例
Example of combination with a camera



Attach to WV-X86531-Z2** & WV-QCL501**

	投影面積/Projected area
正面図/Front-view	0.057 (m ²)
側面図/Side-view	0.064 (m ²)



Attach to WV-X86531-Z2** & WV-QWL501**

	投影面積/Projected area
正面図/Front-view	0.056 (m ²)
側面図/Side-view	0.067 (m ²)

Unit:mm

