

How to upgrade WV-ASM200 to WV-ASM300

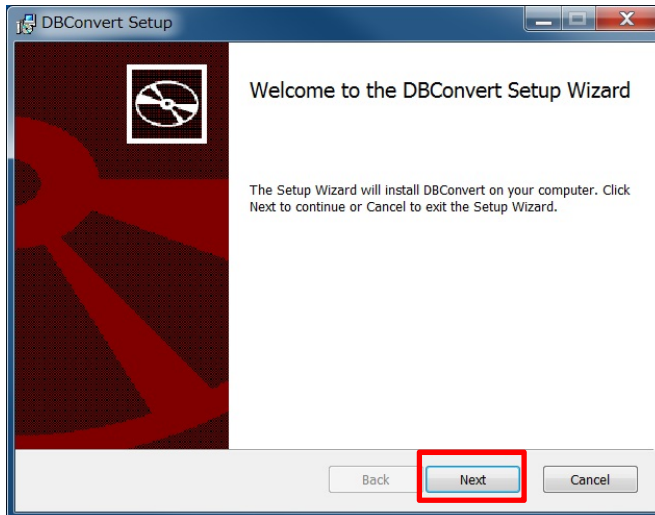
Upgrade procedures from WV-ASM200 to WV-ASM300 are as follows;

- 1 Convert setup file by DBConvert tool.
 - 1 - 1 Install "DBConvert" tool.
 - 1 - 2 Convert "ASM200 setup file" to "ASM300 setup file".
- 2 Uninstall WV-ASM200
 - 2 - 1 Uninstall "WV-ASM200".
 - 2 - 2 Uninstall "Microsoft SQL Server 2012".
- 3 Install WV-ASM300
- 4 Register "Registration Key".
- 5 Load "ASM300 setup file".

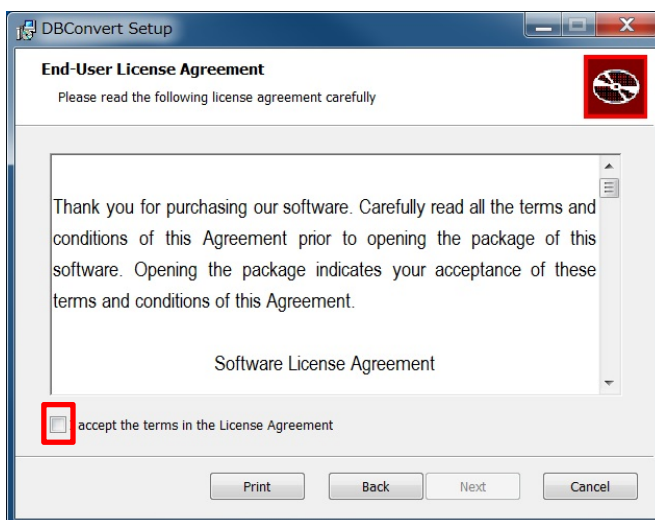
Procedures

Step 1-1. Convert setup file by DBConvert tool.

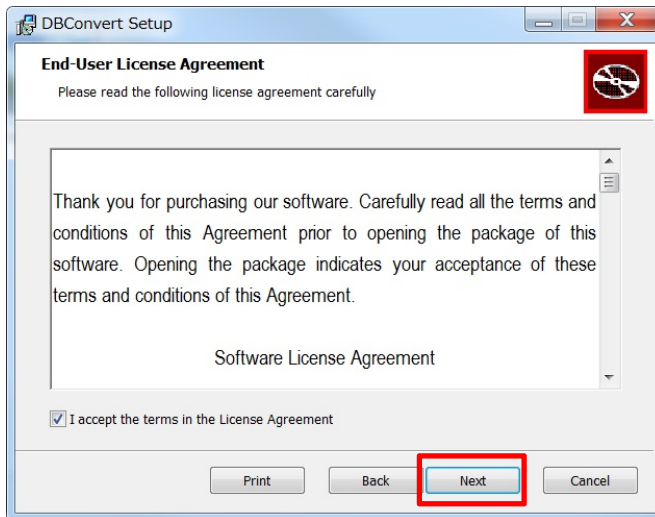
1. Run "DBCONVERT.msi".



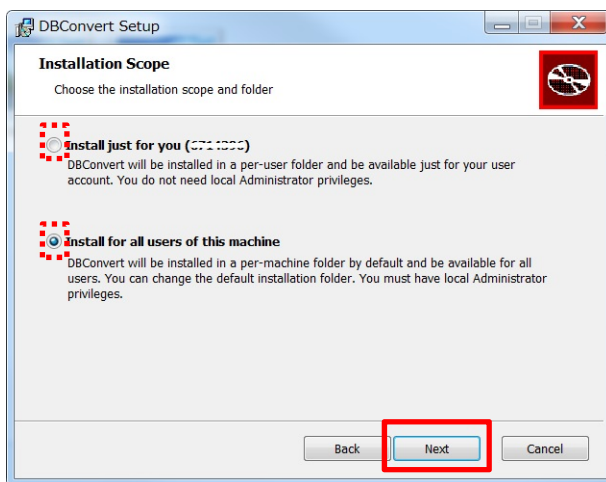
2. Click "Next" button.



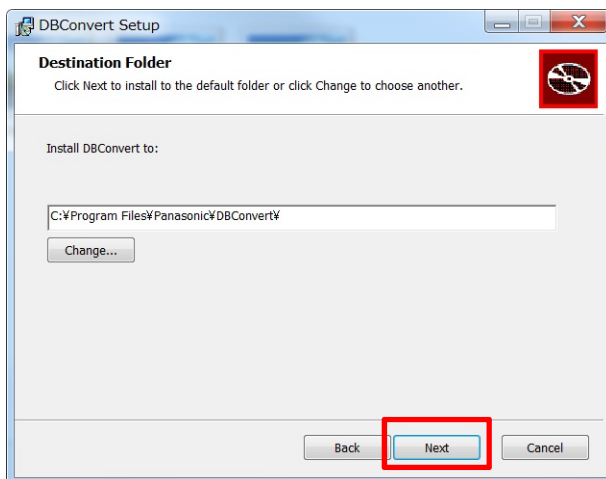
- Put check-mark at "I accept the terms...".



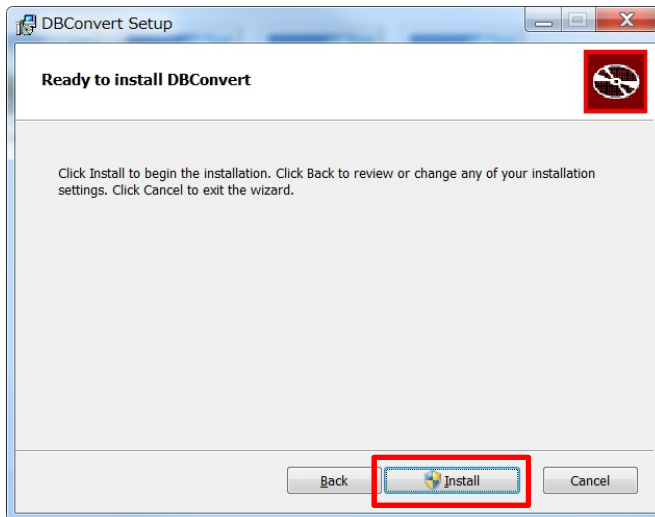
- Click "Next" button.



- Click a radio button to choose either "Install just for you (your account)" or "Install for all users of this machine", then click "Next" button.



6. Click "Next" button.



Step 1-2. Convert "ASM200 setup file" to "ASM300 setup file".

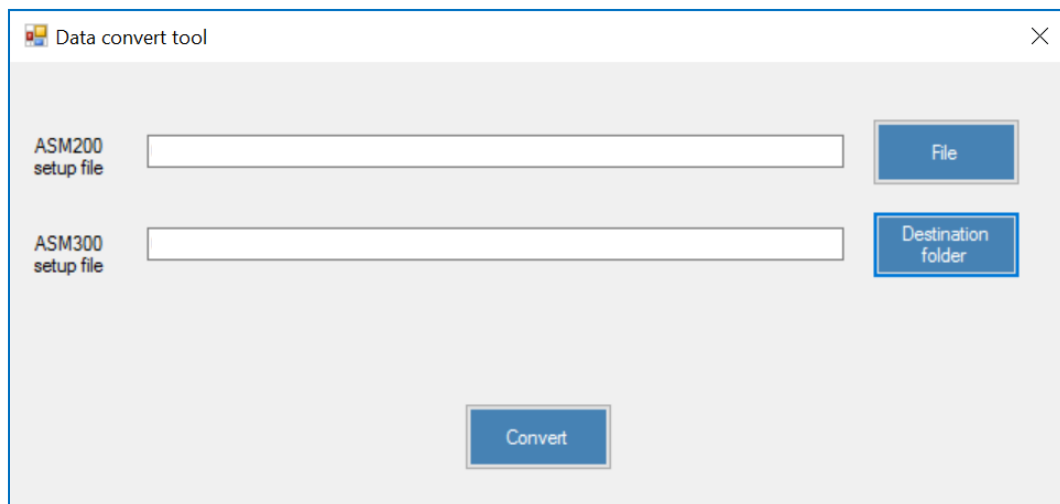
The tool is to convert the setting data of WV-ASM200 to WV-ASM300 , and this document describes how to use it.

NOTE: WV-ASM200 must be installed to run DBConvert.

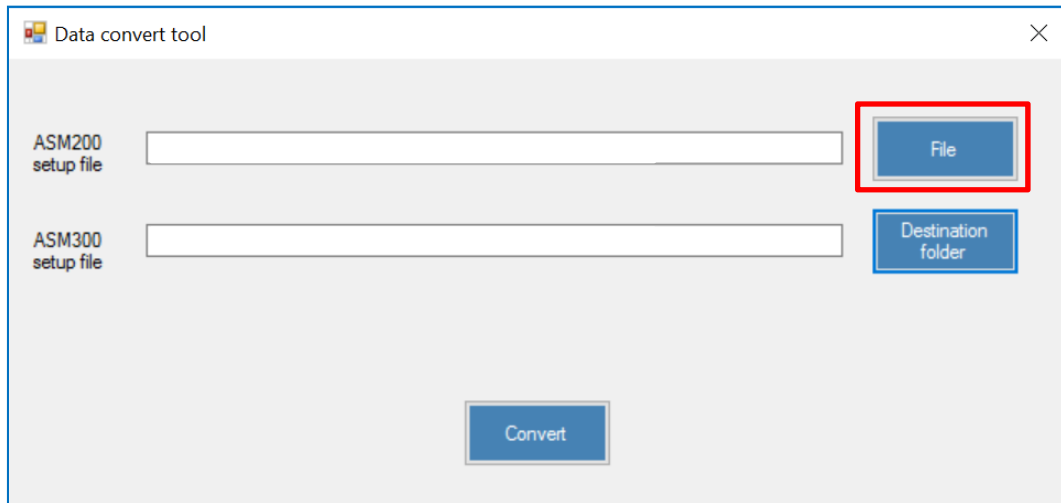
Convert "ASM200 setup file" to "ASM300 setup file" before uninstalling WV-ASM200.

Procedures:

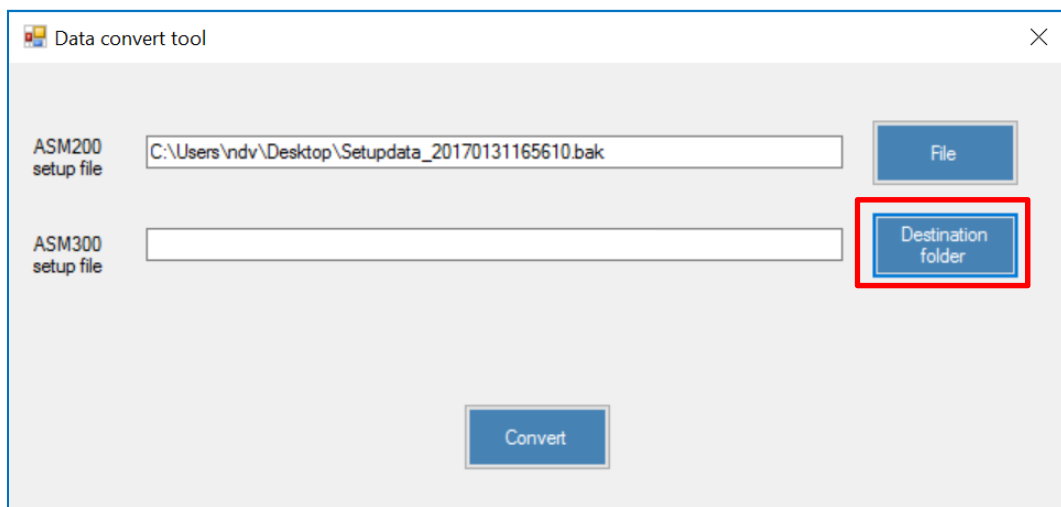
1. Run "DBCONVERT".



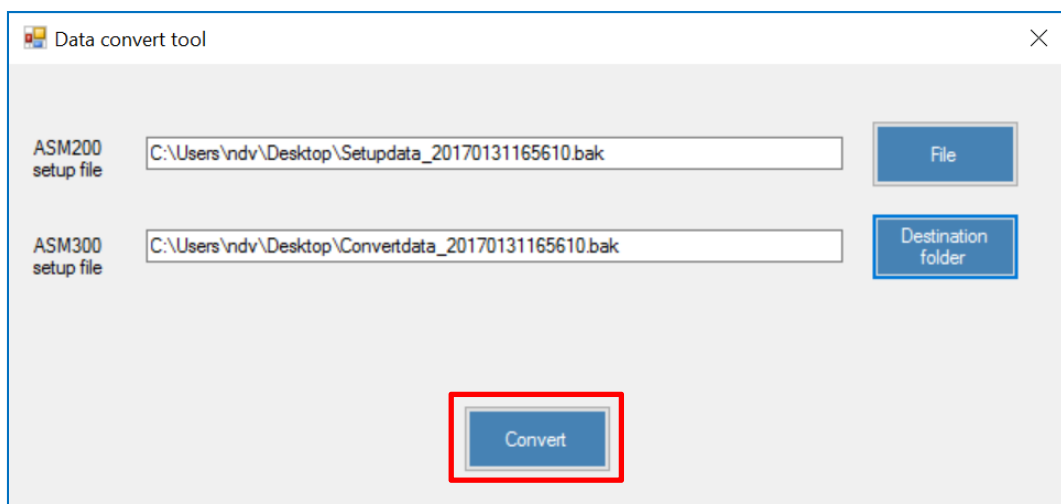
2. Click "File" button to select the file of WV-ASM200 setup file.



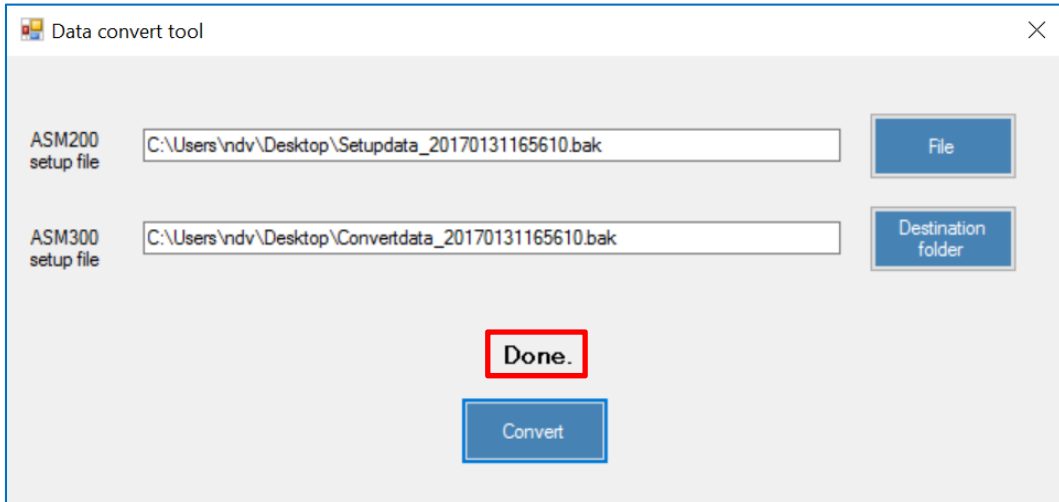
3. Click "Destination folder" to select target path for outputting the WV-ASM300 setup file.



4. Click "Convert" button to start converting.

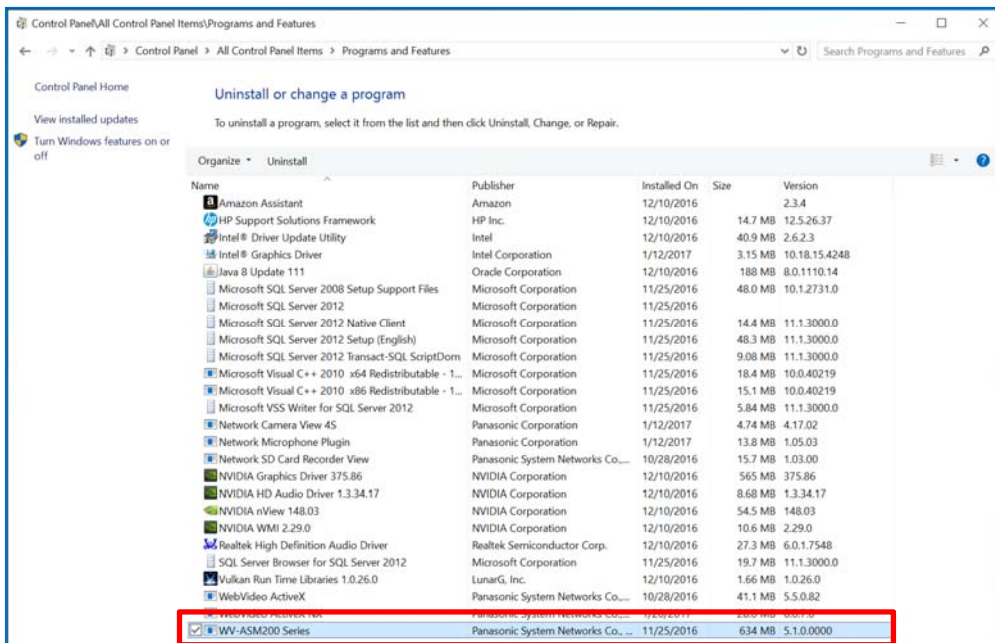


5. You will see “Done” when completed the conversion.

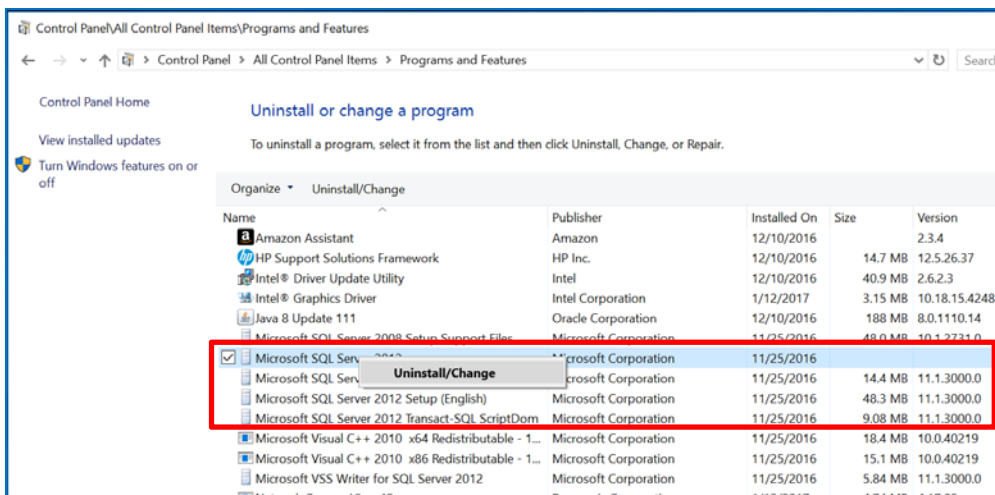


Step 2. Uninstall WV-ASM200

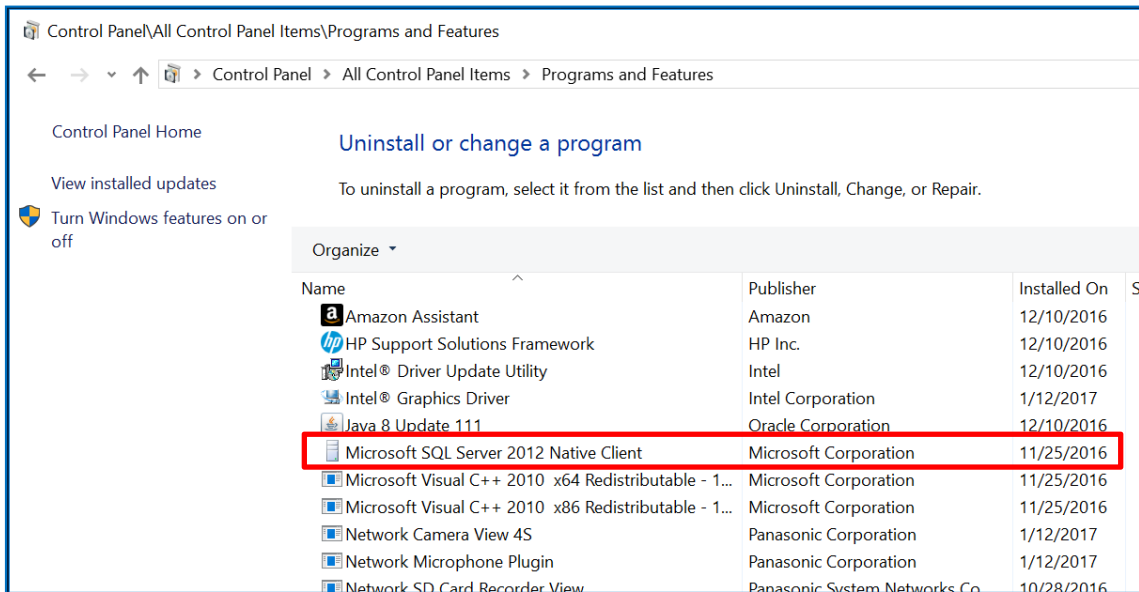
1. Open “Programs and Features” of “Control Panel”.
Uninstall “WV-ASM200 Series”.



2. Uninstall “Microsoft SQL Server 2012”.

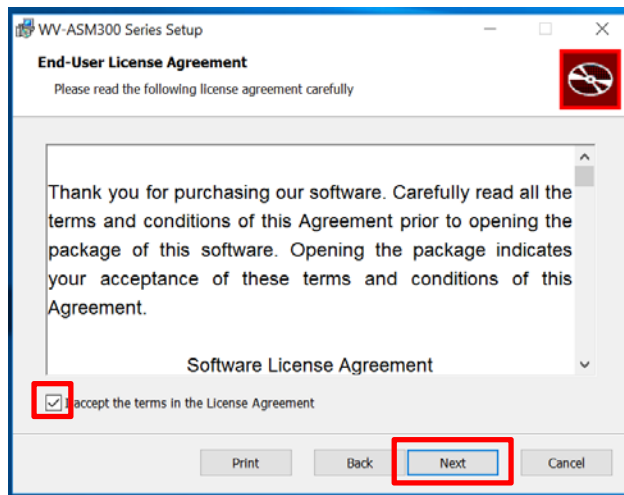


3. Also uninstall the remaining SQL file.



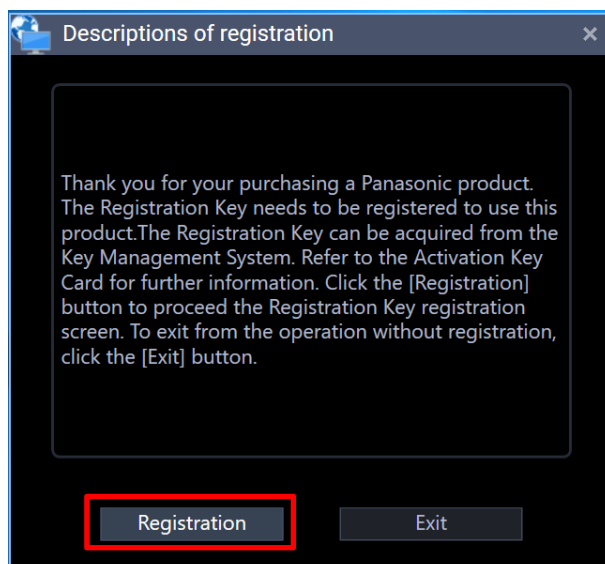
Step 3. Install WV-ASM300

1. Run “setup.exe” to install “WV-ASM300”.
2. Put check-mark to the check box, then click “Next” button.

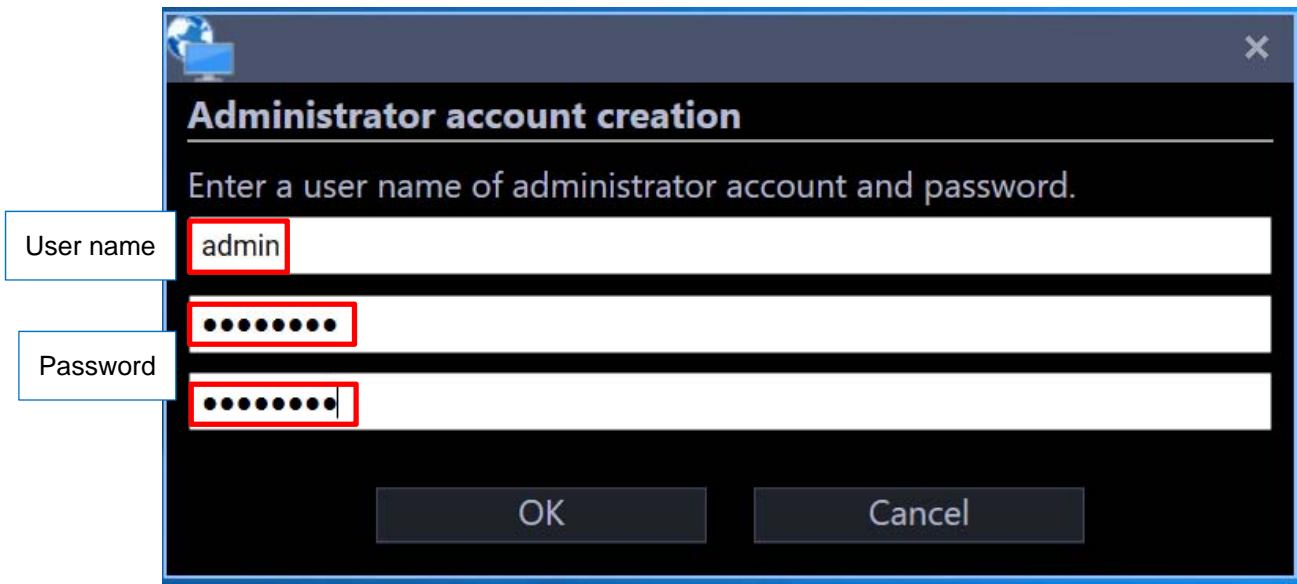


3. Registration.

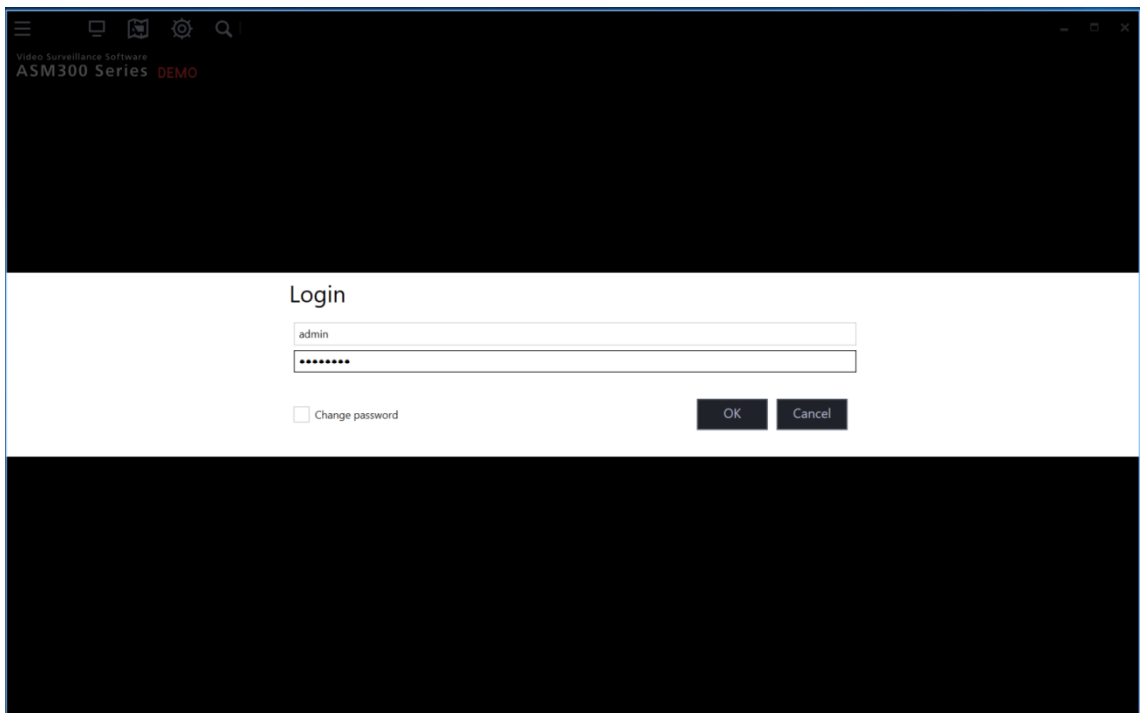
Click “registration” button.



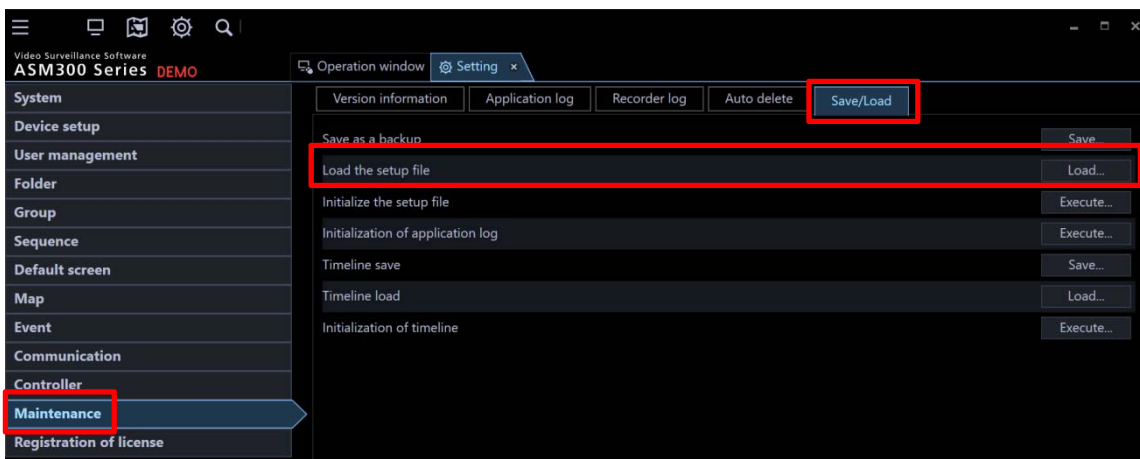
4. Input a user name and password.



5. Login WV-ASM300



6. Select "Maintenance". Then select "Save/Load" tab and click "Load..." button to load ASM300 setup file.



7. Select "Convertdata_xxx", then click "Open" button to start loading the file.

